



# **Kathwada**

## **Business Center**

---

# **INDUSTRIAL SHEDS AND SHOPS**



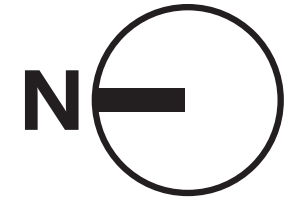








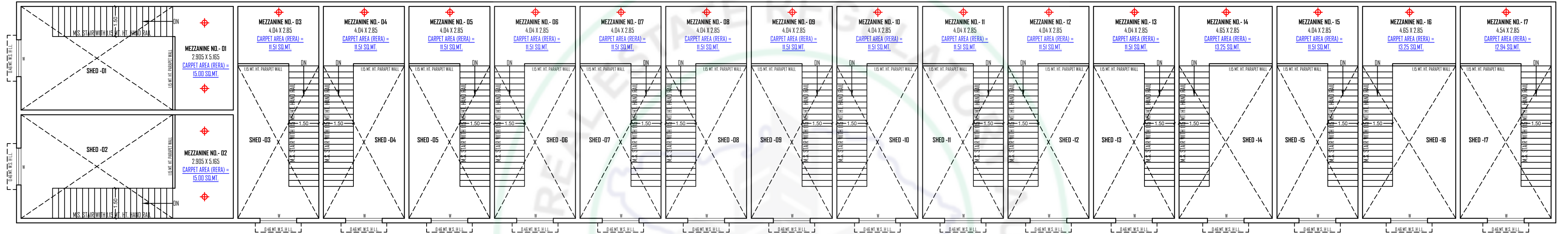
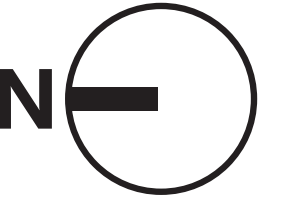
# Ground Floor & Parking Layout Plan



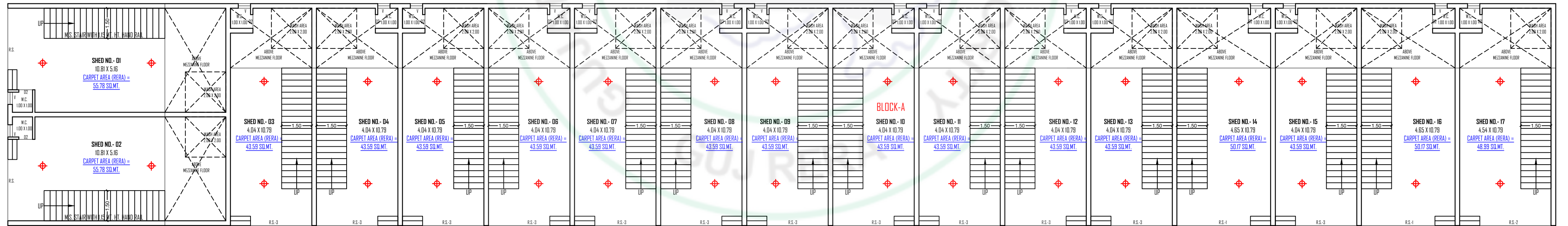
18.00 MT. WIDE T.P. ROAD



# Ground Floor Plan (Block - A)



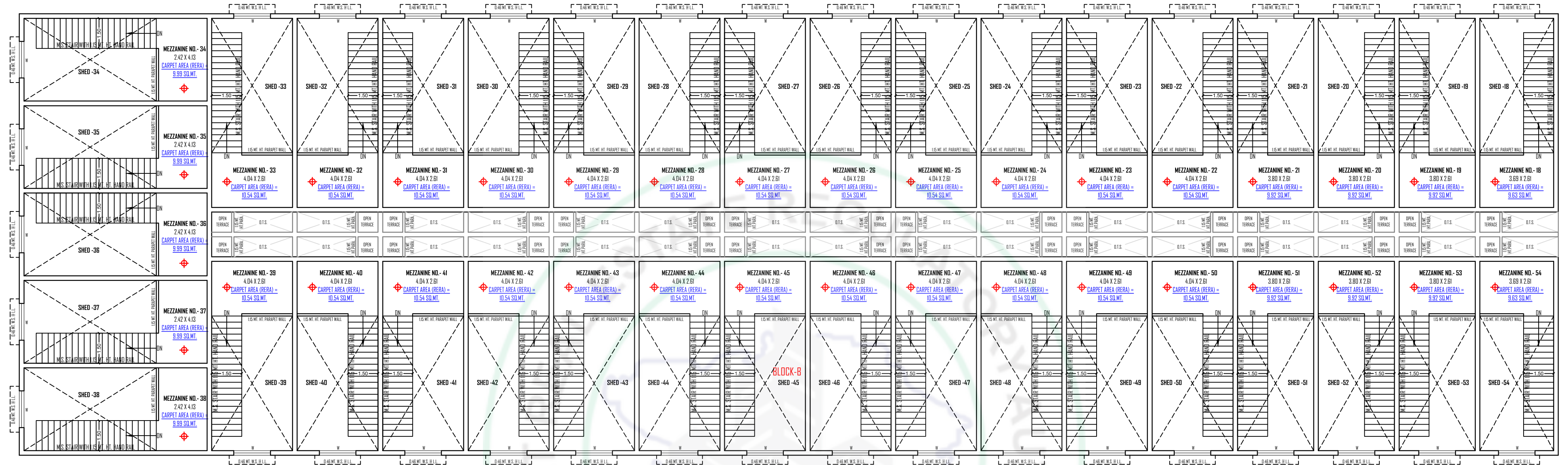
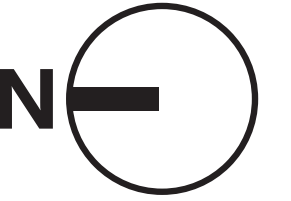
**MEZZANINE FLOOR PLAN (BLOCK:- A)**  
 NOTE :- ALL OUTER & INTERNAL WALL ARE OF 0.115 MT. & 0.23 MT. TH. B/K WALL



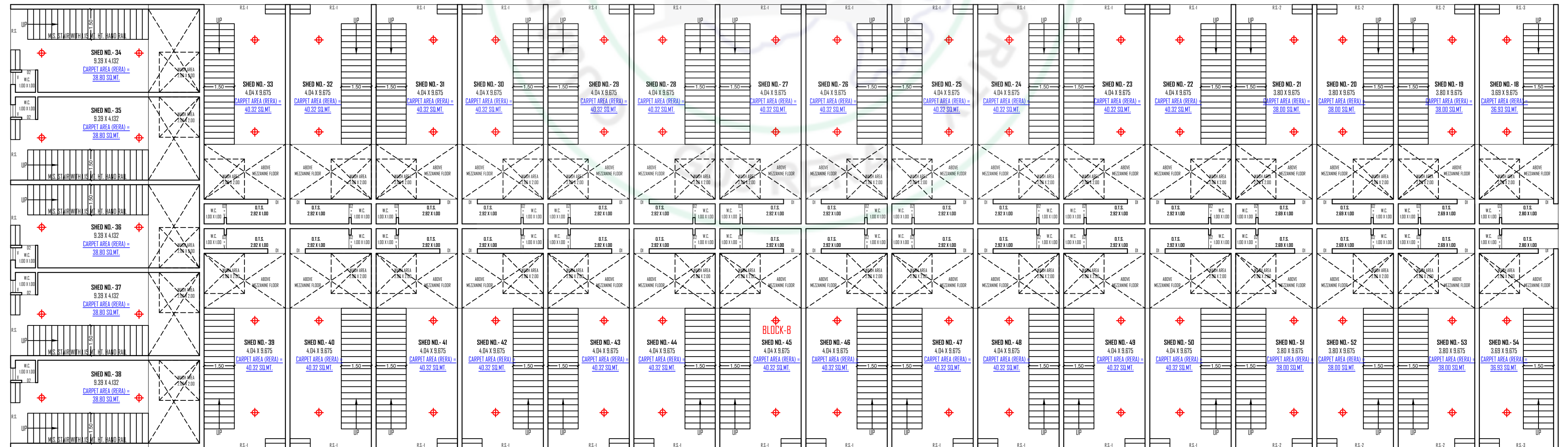
**GROUND FLOOR PLAN (BLOCK:- A)**  
 NOTE :- ALL OUTER & INTERNAL WALL ARE OF 0.115 MT. & 0.23 MT. TH. B/K WALL



# Ground Floor Plan (Block - B)

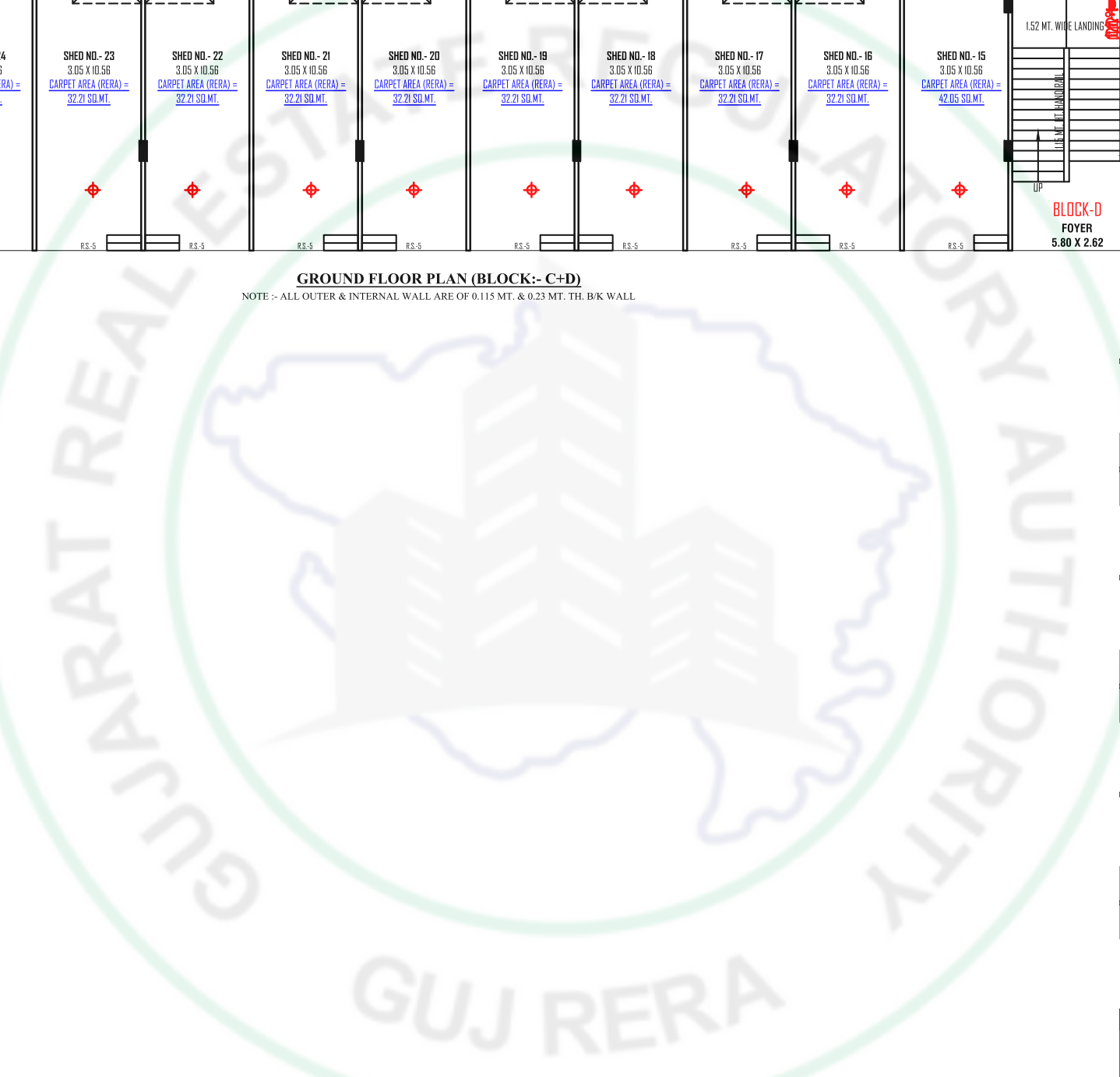
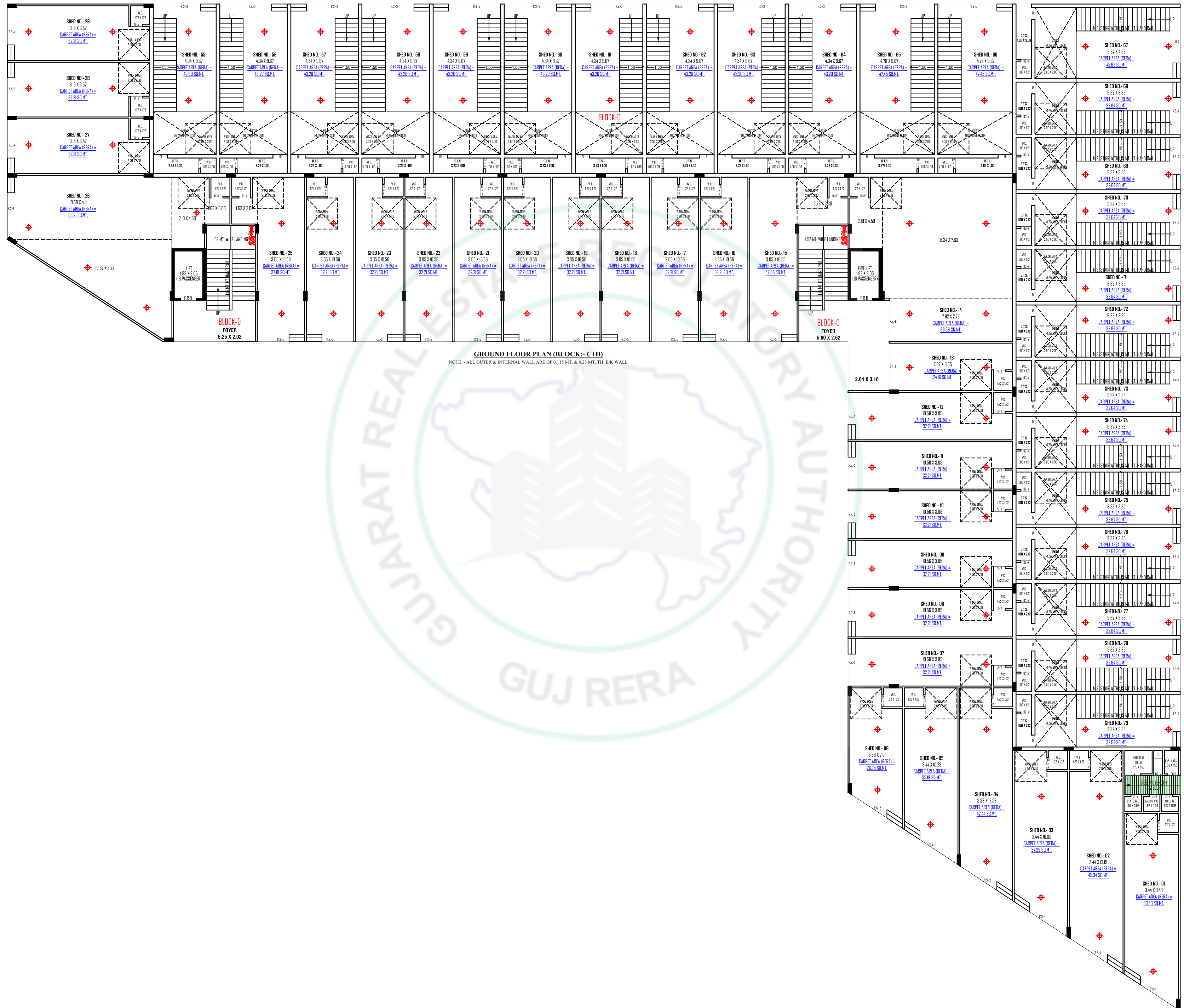
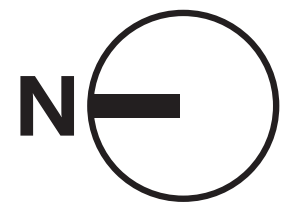


**MEZZANINE FLOOR PLAN (BLOCK-B)**  
NOTE :- ALL OUTER & INTERNAL WALL ARE OF 0.115 MT. & 0.23 MT. TH. B.K WALL.

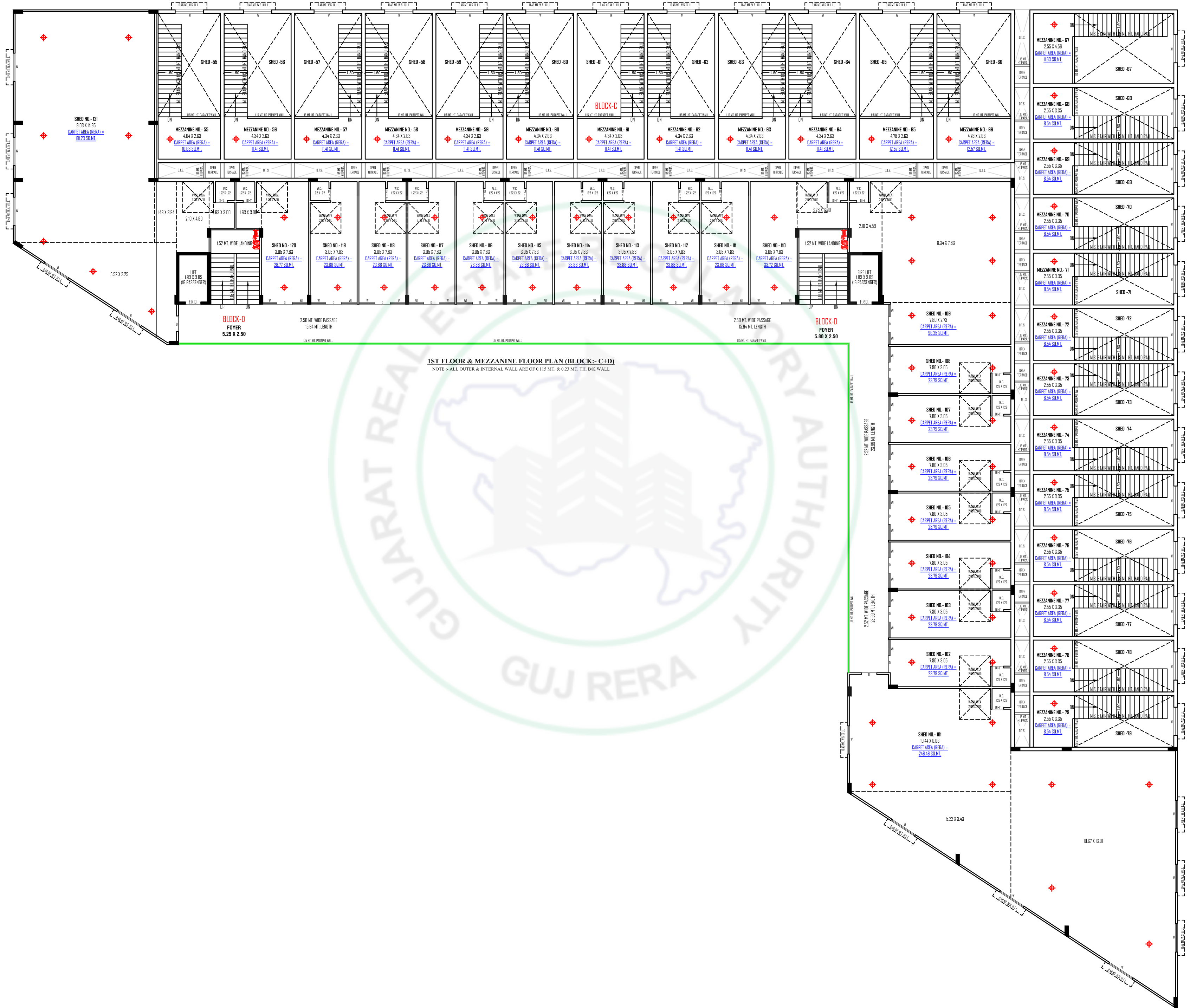
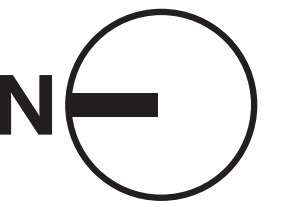


**GROUND FLOOR PLAN (BLOCK-B)**  
NOTE :- ALL OUTER & INTERNAL WALL ARE OF 0.115 MT. & 0.23 MT. TH. B.K WALL.

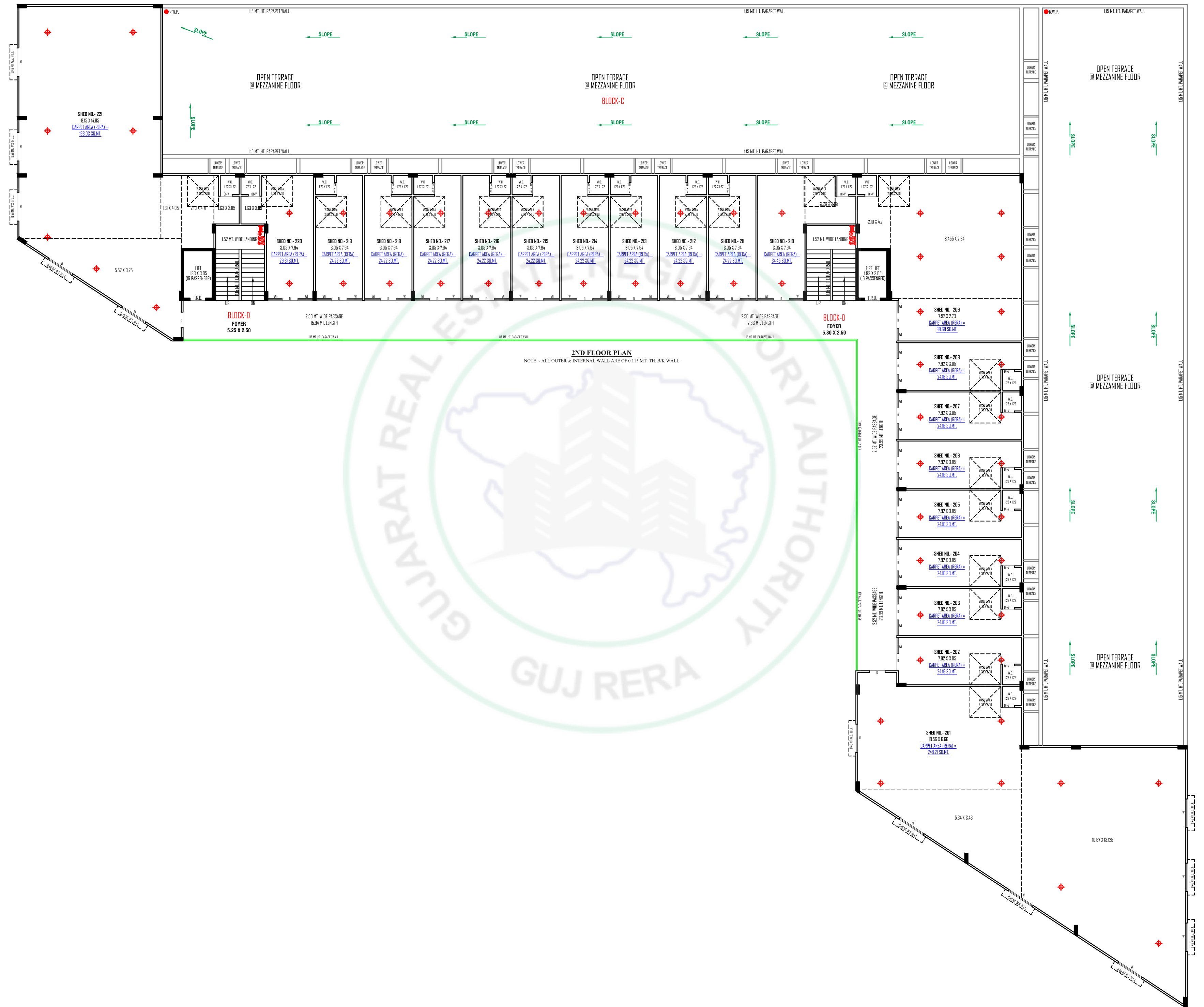
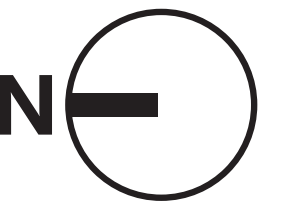
# Ground Floor Plan (BLOCK - C+D)



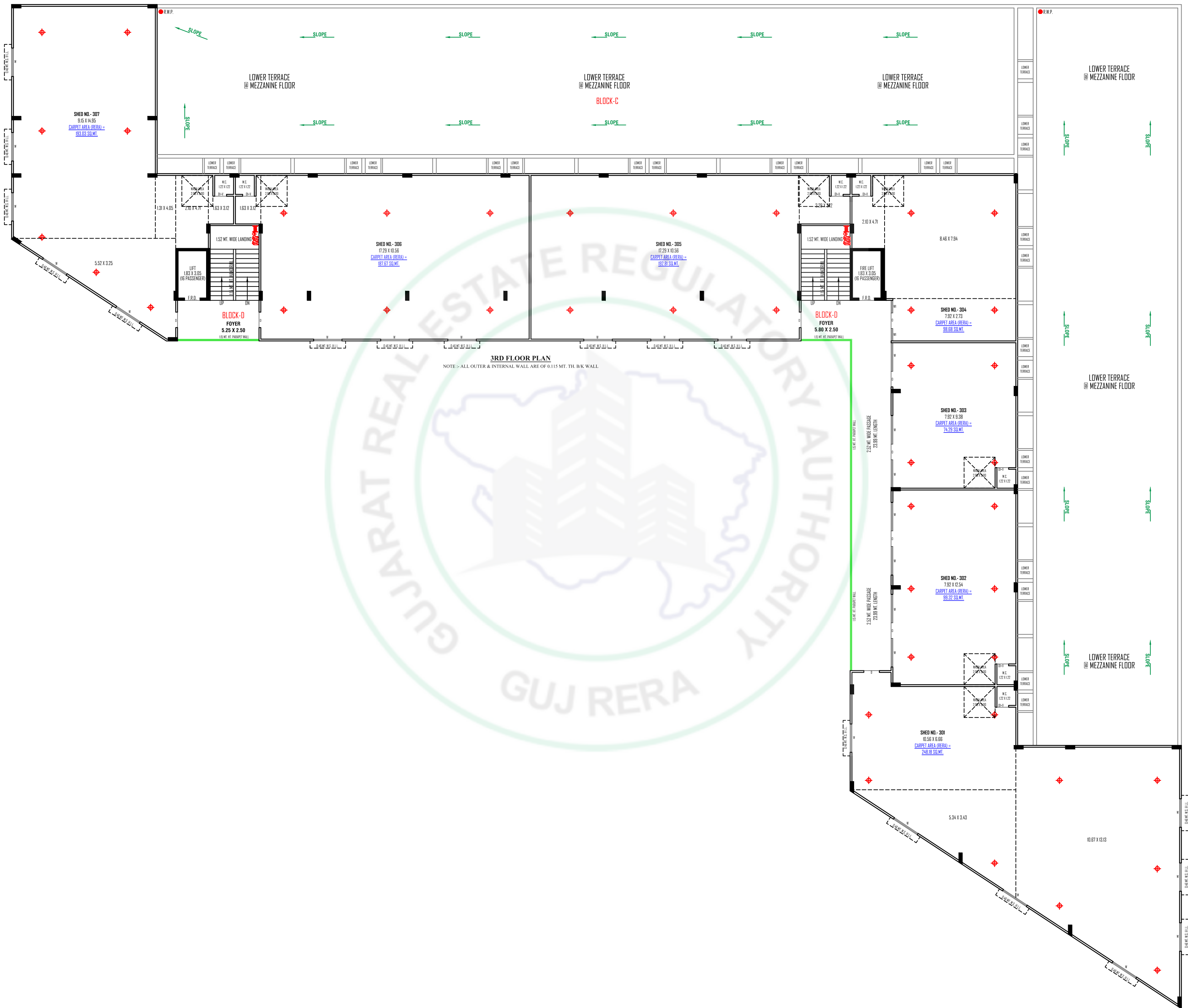
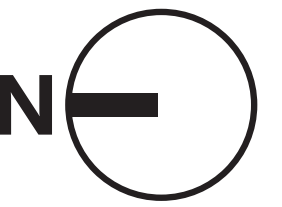
# 1st Floor & Mezzanine Floor Plan (BLOCK - C+D)



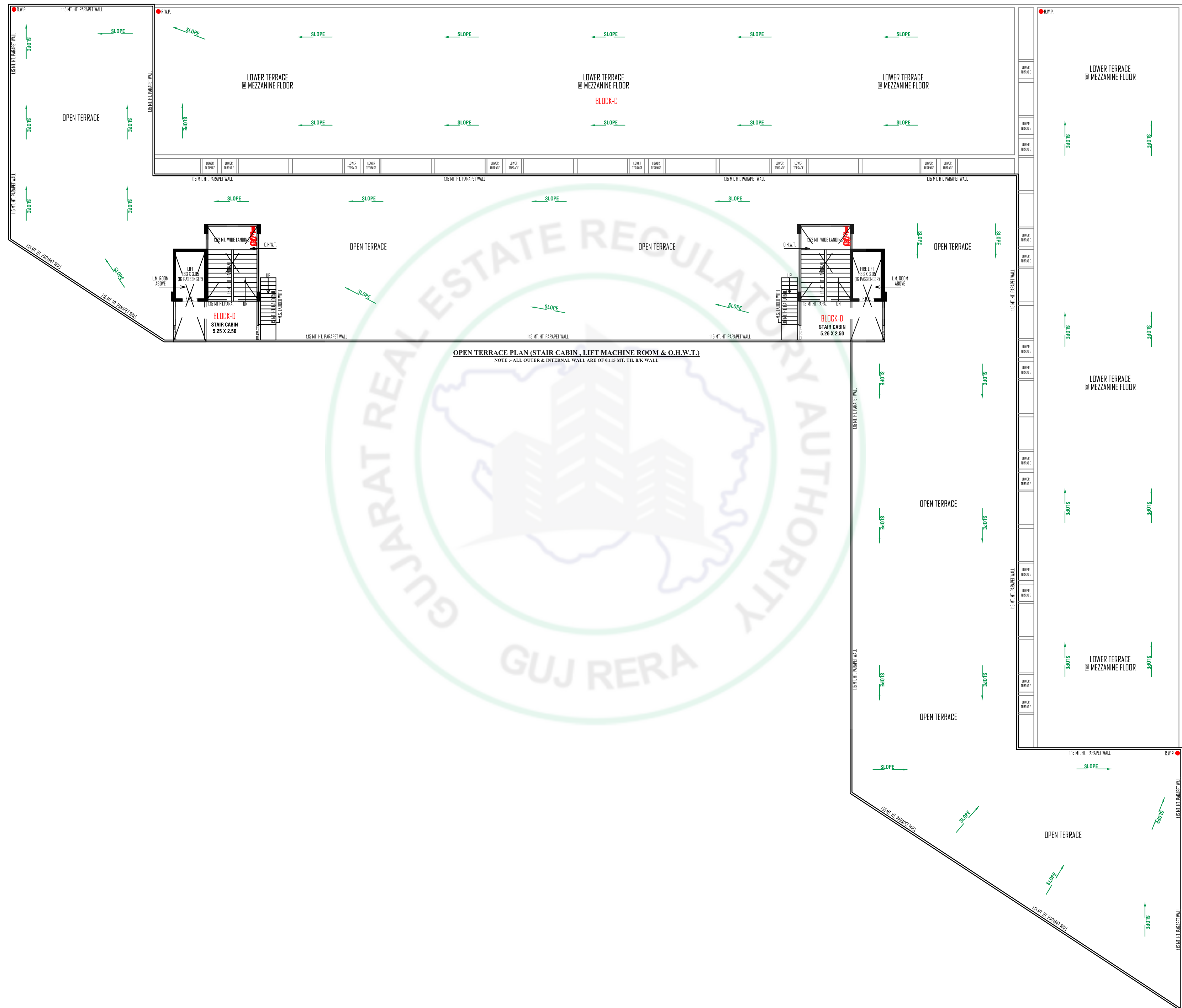
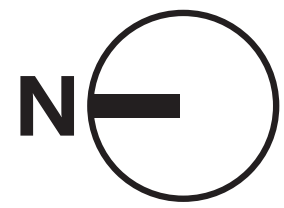
# 2nd Floor Floor Plan (BLOCK - C+D)



# 3RD Floor Floor Plan (BLOCK - C+D)



# Open Terrace Plan (Stair cabin, Lift Machine Room & O.H.W.T)



## **SPECIFICATION:**

21'.0" Heights For all Sheds.

15 Hp Power Supply For All Sheds.

24 Hour Water Supply.

Large Scale Parking Area.

Prime Location.

Ips Flooring For all sheds.

Individual Toilet Facility.

Concealed Plumbing Glazed Tiles up to Lintel Level Toilets.

Earthquake Resistance RCC Frame Structure with Brick Masonry Walls.

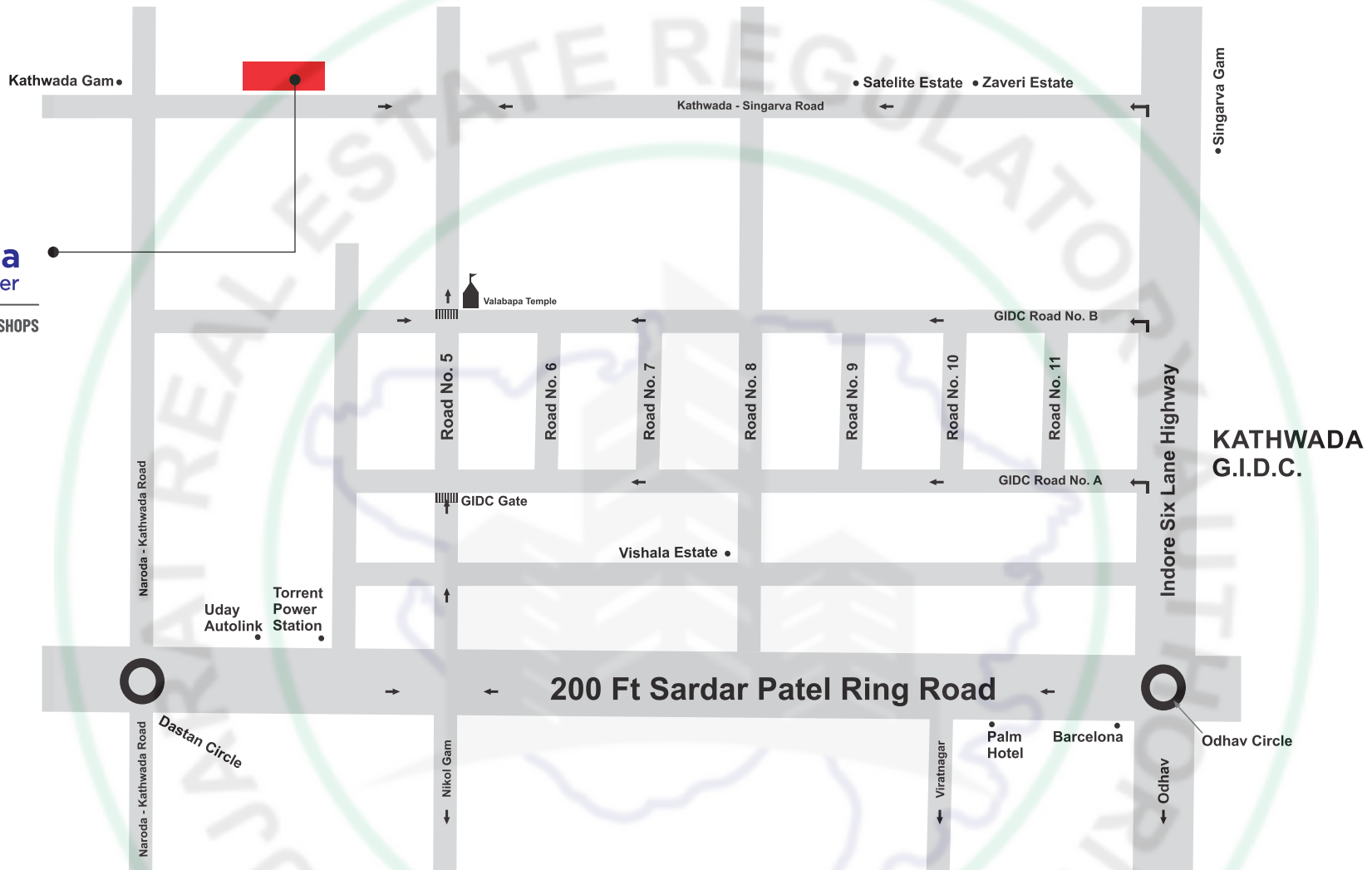
Sufficient in concealed wiring with standard Accessories.

Dust Free Business Park.

Beautiful Landscape.

Internal RCC Road with Street Light.

Rolling Shutter with gear box and Oil paint Color.



**Rules and Regulations :-**

- All rights are reserved by the developers to make any changes in the plan, elevation, specification and future additional development in surrounding area in the scheme and shall be binding to all the members.
- All government legal charges, stamp, registration charges, panchayat charges, common maintenance charges, service tax and vat shall be borne extra by the members.
- In case of irregular payments interest/new book value will be charged.
- Cancellation charge would be 15% of total unit value.
- No external changes shall be allowed.
- Dimensions and area mentioned in the brochure are approximate and indicative.
- This brochure is not a part of legal documents.
- If there is some change in the planning and design that should be accepted by members.



DEVELOPER BY:



**DIVYVEDA**  
DEVELOPERS LLP

INDUSTRIAL SHEDS AND SHOPS

ARCHITECT BY:



STRUCTURE ENGINEER BY:

Hardik P. Upadhyay

**Kathwada Business Center,**

Near Bauchar Party Plot, Ahmedabad, Gujarat, 382430

**Mo.:** +91 96870 80888, 79843 48426

**RERA No.:**

[www.gujrera.gujarat.gov.in](http://www.gujrera.gujarat.gov.in)

Drishtikon : +91 93284 41006