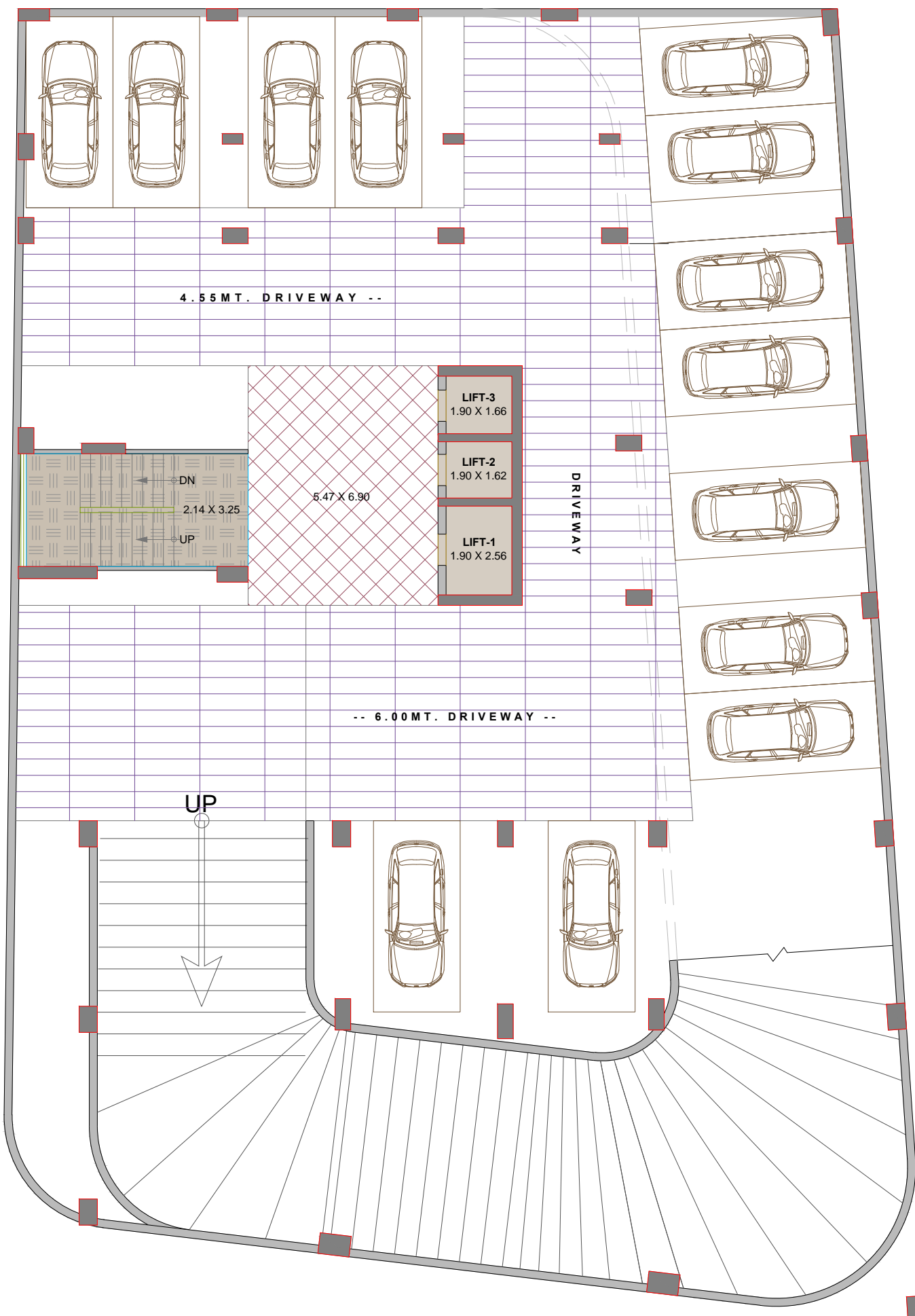


RUDRA SUVAS

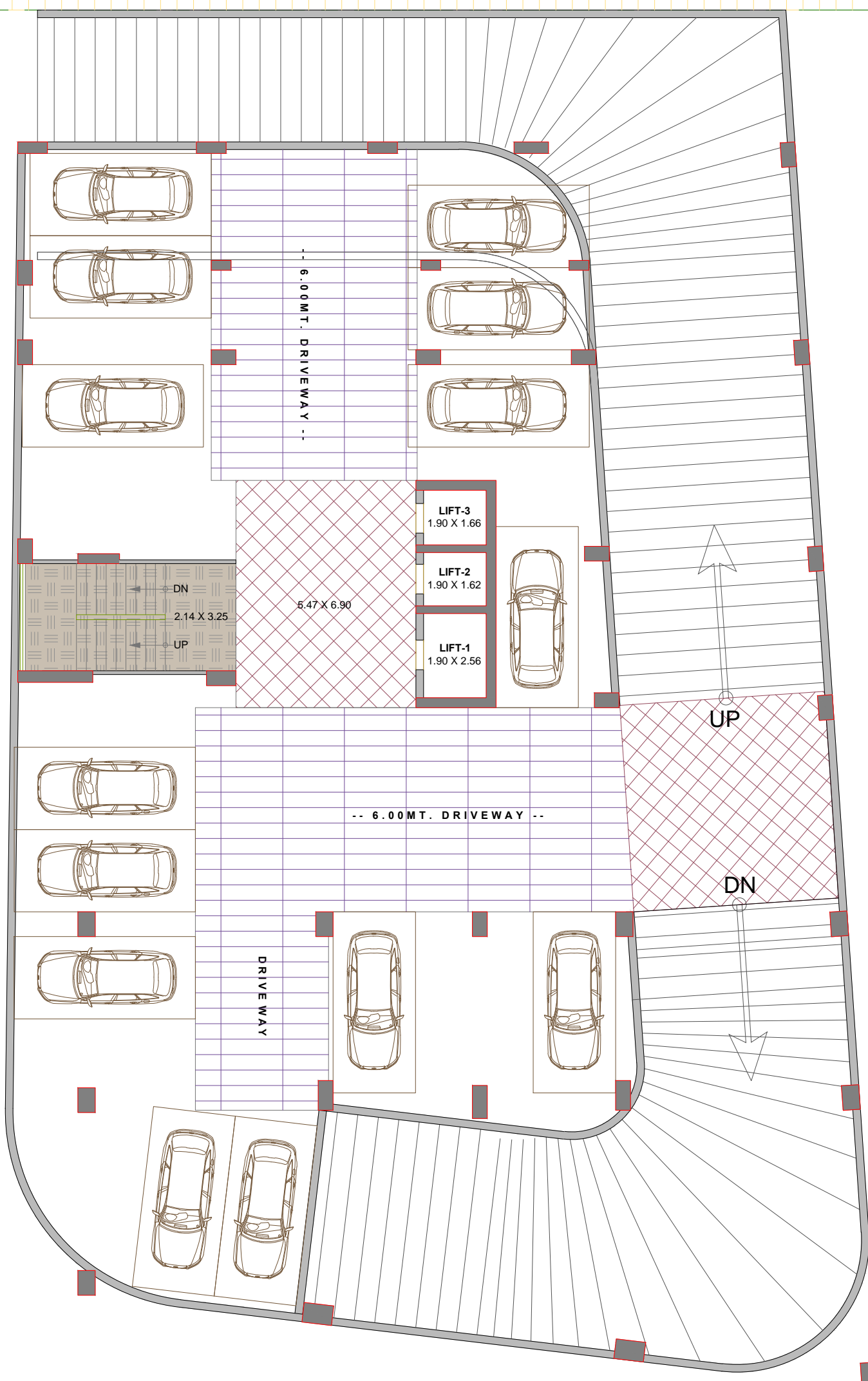
@ MANINAGAR





30.00 MT. WIDE ROAD

SECOND BASEMENT PLAN

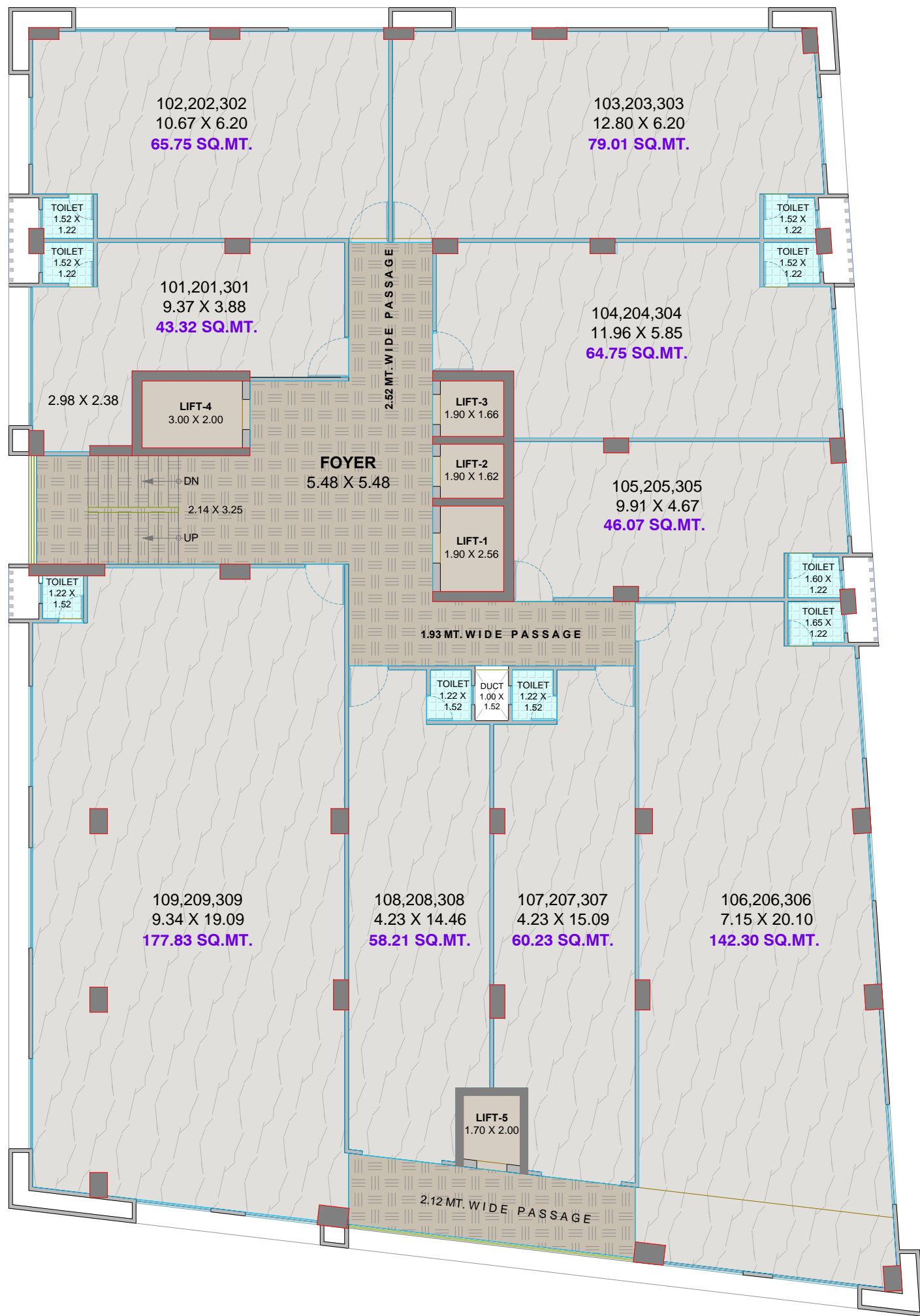


30.00 MT. WIDE ROAD

FIRST BASEMENT PLAN



GROUND FLOOR PLAN



30.00 MT. WIDE ROAD

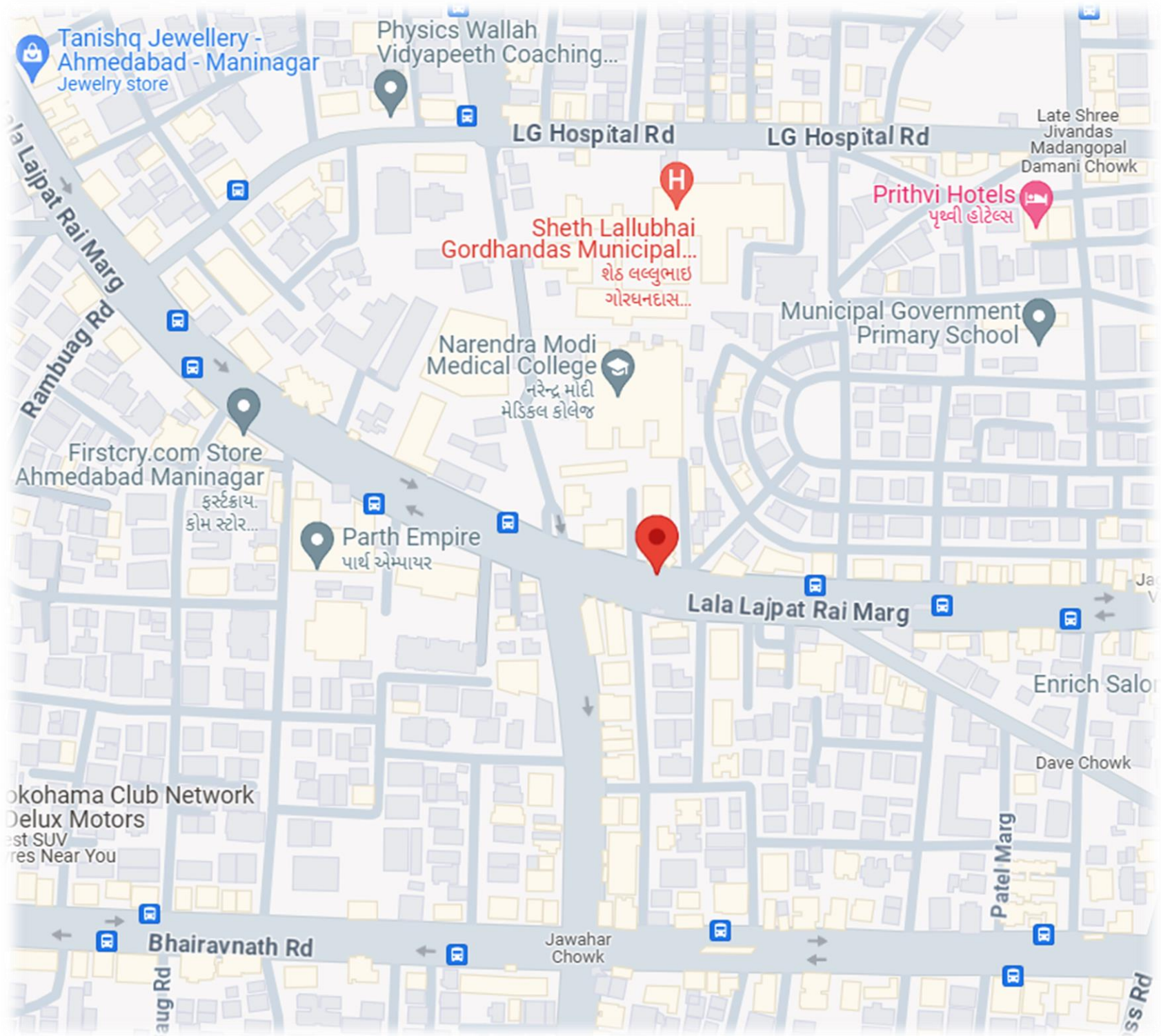
1ST, 2ND & 3RD FLOOR PLAN





RUDRA SUVAS





Specification

Structure:

Earthquake resistance structure design

Flooring:

All floor high quality double charge vitrified tiles.
rustic tiles in balcony & china mosaic on terrace

Door:

Decorative main door
Internal door - Flush door with wooden / granite frame.

Window:

Anodized aluminum section with
granite / wooden frame and reflective glass.

Toilet / Plumbing:

Elegantly designed toilets with designer tiles up to lintel level
and premium quality sanitary wares & cp fittings in all toilets.

Electrification:

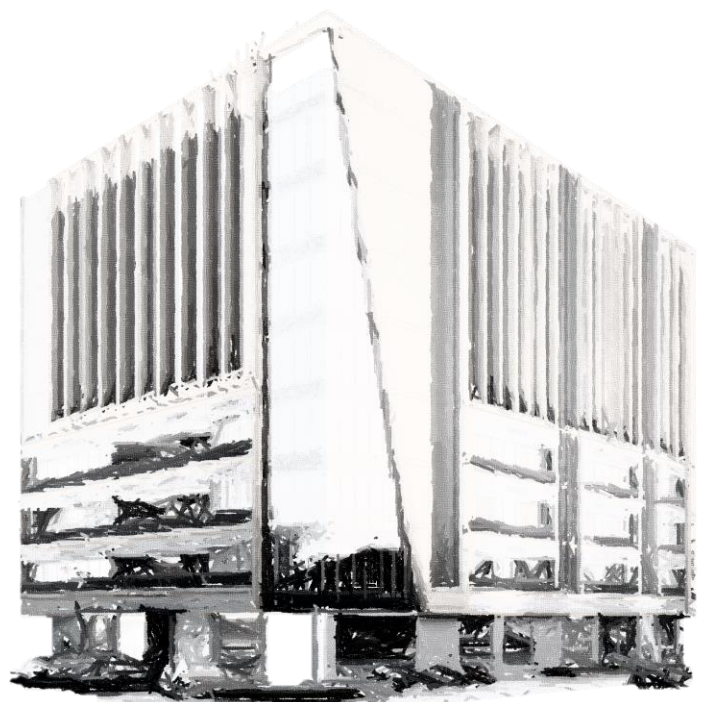
Single phase concealed isi copper wiring with standard accessories.

Walls:

Internal walls will be finished with putty over mala plaster.
all external wall will be finished with double coat sand
face plaster with premium quality paint.

Parking:

Flooring as per architect design in parking.



— RUDRA SUVAS —

Developer

RUDRA

— DEVELOPERS —

Krushnabaug char rasta B/H Vijaya sale,
Maninagar, Ahmedabad - 380008

Project by

Rudra Developers

Architect



DIVYESH DESAI & ASSOCIATES

Structure Consultancy

HNS Associates
Hardik Bhatt

RERA REGISTER NO :

RERA WEBSITE : WWW.GUJRERA.GUJARAT.GOV.IN