

Project By

KRISHNA

infra

21 ફુટ હાઈટેડ ઈન્ડસ્ટ્રીયલ શેડ



1



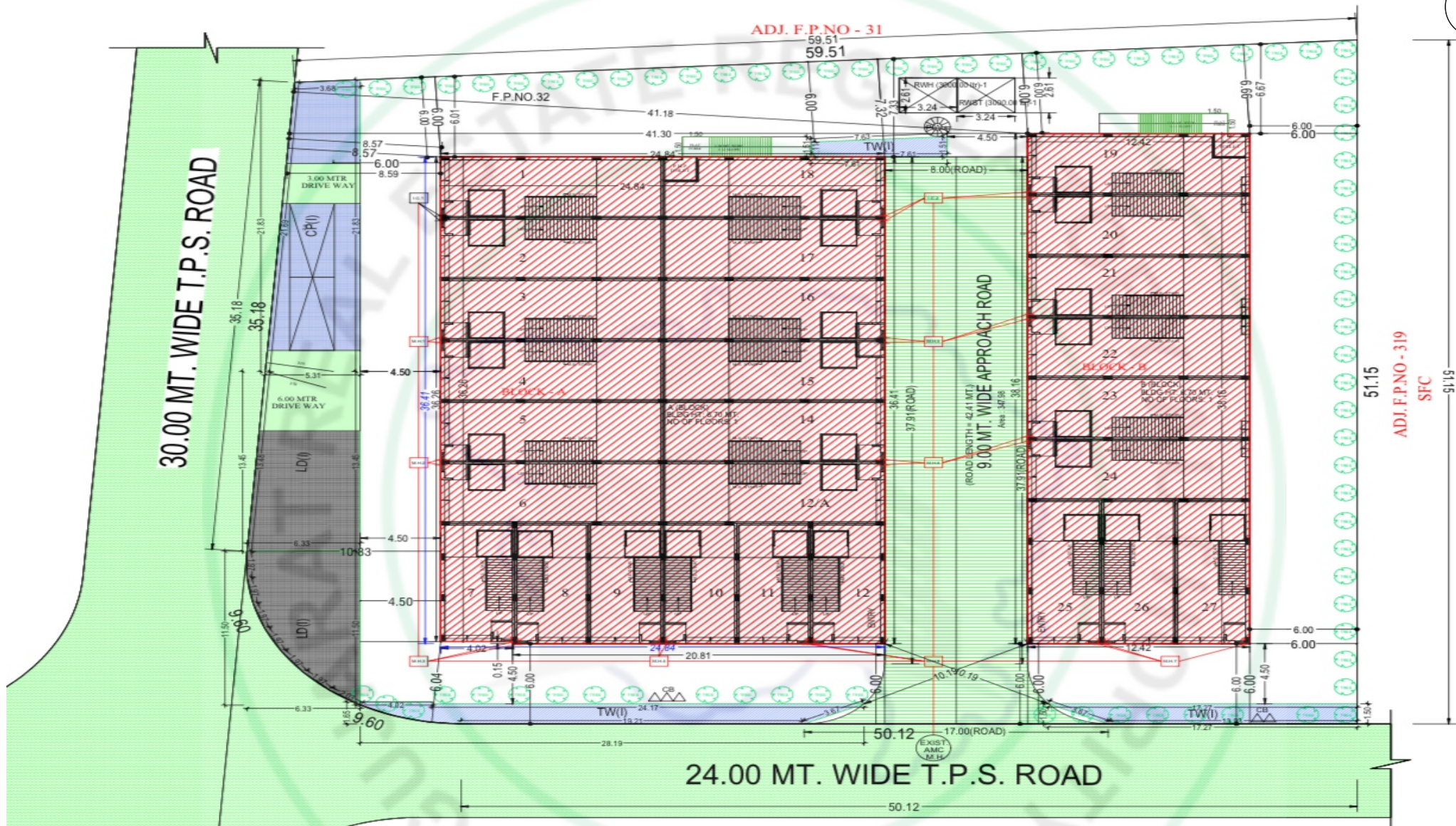
માત્ર

27

ઈન્ડસ્ટ્રીયલ
શેડ

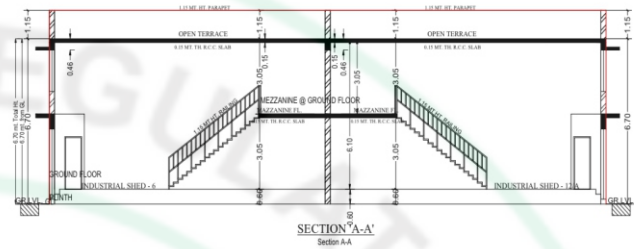
આપણા ક્લવાસમાં



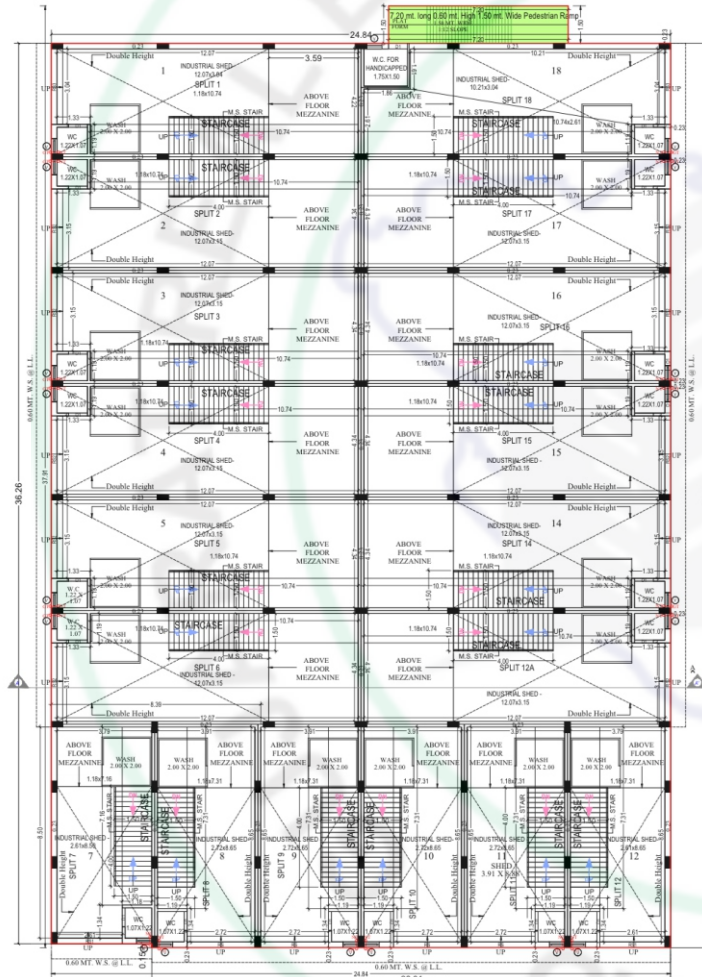


LAY - OUT PLAN
 SITE PLAN WITH PARKING LAY OUT
 (Scale - 1:200)

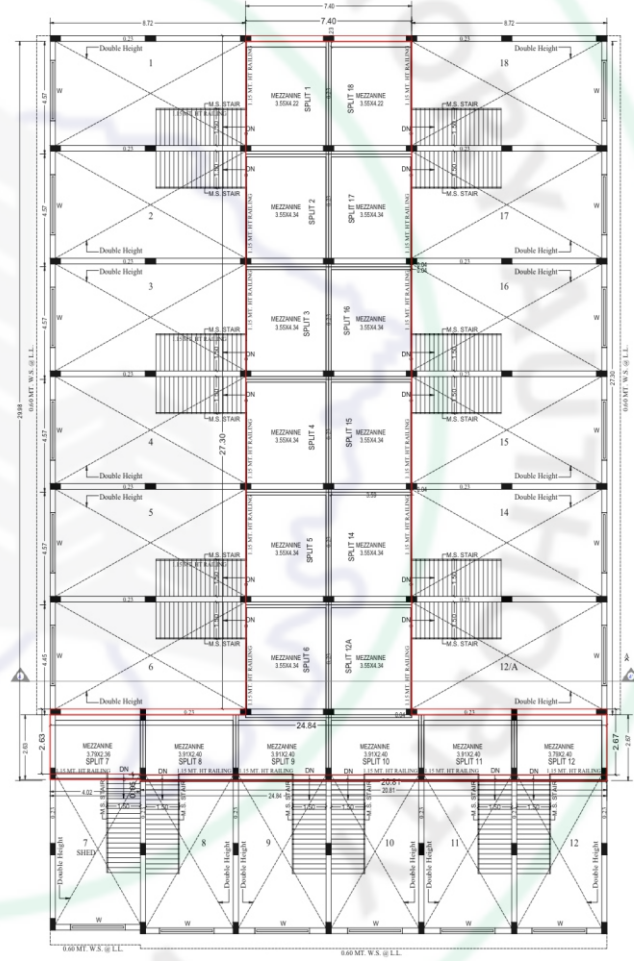




Floor Level +3.65 mt.
 Floor Level +0.80 mt.
 Floor Level +0.00 mt.



GROUND FLOOR PLAN
 GROUND FLOOR PLAN
 (Proposed)
 (SCALE 1:100)



MEZZANINE FLOOR PLAN
 MEZZANINE @ GROUND FLOOR PLAN
 (Proposed)
 (SCALE 1:100)

SPECIFICATIONS

- Each shed is 21 feet high
- Shutter
- Prime & prominent location
- N.A. N.O.C. Title clear with plan passed
- Elegant Main entrance gate with Security Cabin
- Underground R.C.C. 24-hour water facility with tank and pressure system.
- RCC road and street lights in the whole infrastructure.
- Independent water bore
- Very close to kathwada G.I.D.C.
- Independent toilet in every shed
- Attractive elevation of each shed
- External double-coat plaster with acrylic paint.
- Internal white washed with single coat mala plaster with putty finish.
- A complete dust-free industrial park
- 13 H.P. phase power connection



**VISHVA
BUSINESS
HUB**

Samruddhi Industrial estate

M81 Technologies Pvt

RB ENGINEERING
रब इंजिनियरिंग

Durga Motor Rewinding Work

saienterprise
सैअन्टेप्रिसे
Temporarily closed

Sanitary Napkin
सनिटरी नेपकिन
Temporarily closed

NB CRICKET CLUBS

Shyam Trade Center

vandematram 3 industrial park
Temporarily closed

Rudraksha Engineering

Vishva Business Hub

Anjani honey

Bhagwat Ambit Industrial sheds

RATNAMANI INDUSTRIAL ESTATE

Shree Hari Industries

EMPIRE COMPRESSOR PVT. LTD
साम्राज्य कम्प्रेसर...

umiya estate
उमिया एस्टेट

SMFG India Credit Co. Ltd

Innovative engg

PARAM ENTERPRISE

Swetayan Industrial Park
स्वेटायान इंडस्ट्रियल...

Bahuchar Green Party Plot
बाहुचर ग्रीन पार्टी प्लॉट

Shreenath Metals

Pelican Cashew Tech
पेलिकन काजू टेक

Okil Auto Garage

AMAR INSTRUMENTS UNIT-2

m Industrial Estate

Hindustan sales kathwada

INDO-WIND ENGINEERS

Aata Maker
आटा मेकर

Vivaan Industrial Park

DEVELOPED BY



ARCHITECTS & CONSULTANTS



- : સરનામું :-
 વિશ્વા બિઝનેસ હબ,
 ભાગવત સર્કલ ની પાસે,
 કહવાડા.

ઈન્કવાયરી નં :- ૯૭૨૪૨૩૪૯૩૮, ૭૨૨૬૮૮૪૮૭૩

RERA REGISTER NO.:-.....

RERA WEBSITE : WWW.GUJRERA.GUJARAT.GOV.IN