



MAHER  
HOMES

4



2 & 3 BHK  
PURE RESIDENTIAL  
COMMUNITY

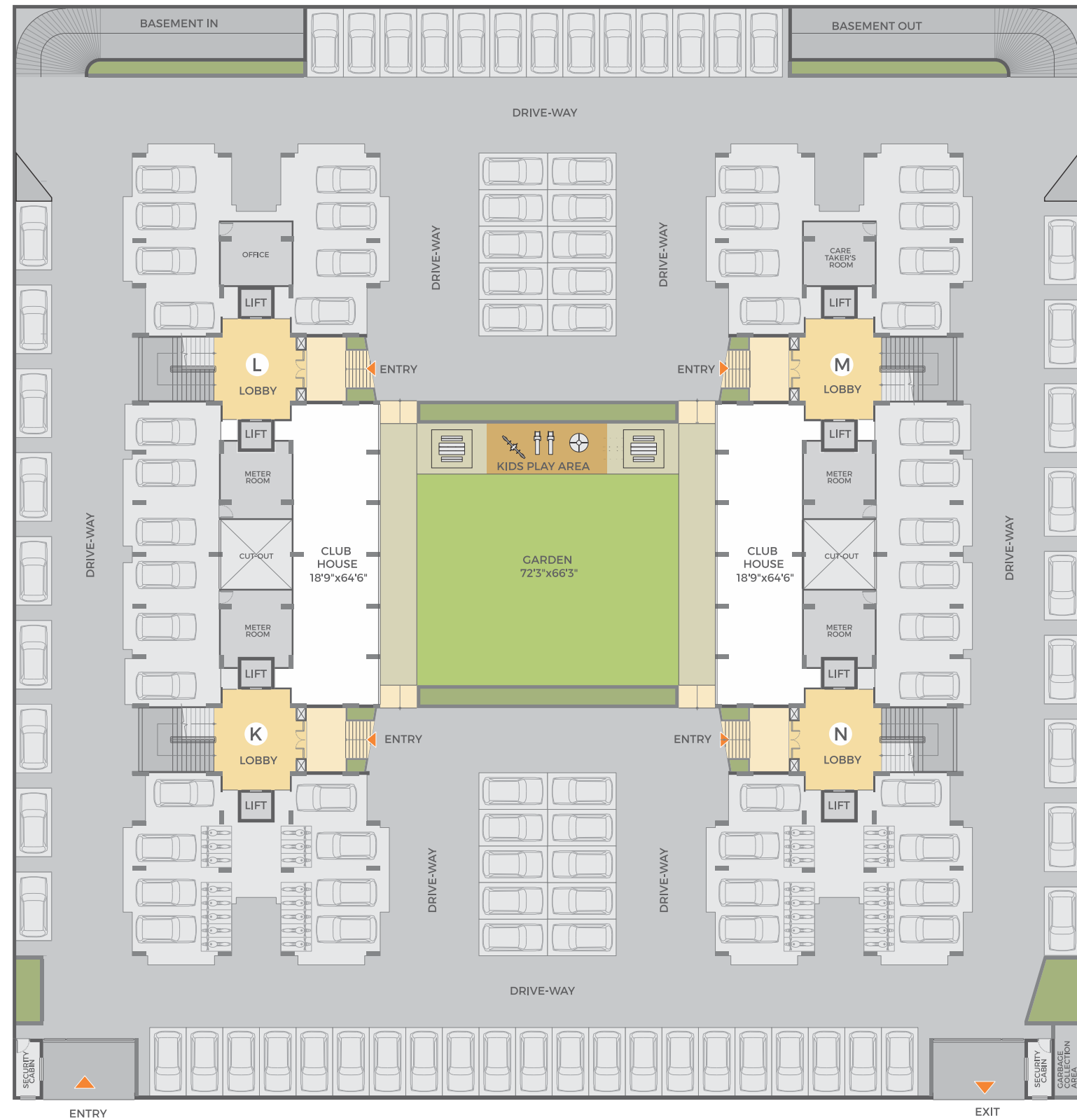
welcome to  
a community called  
**MAHER**  
HOMES





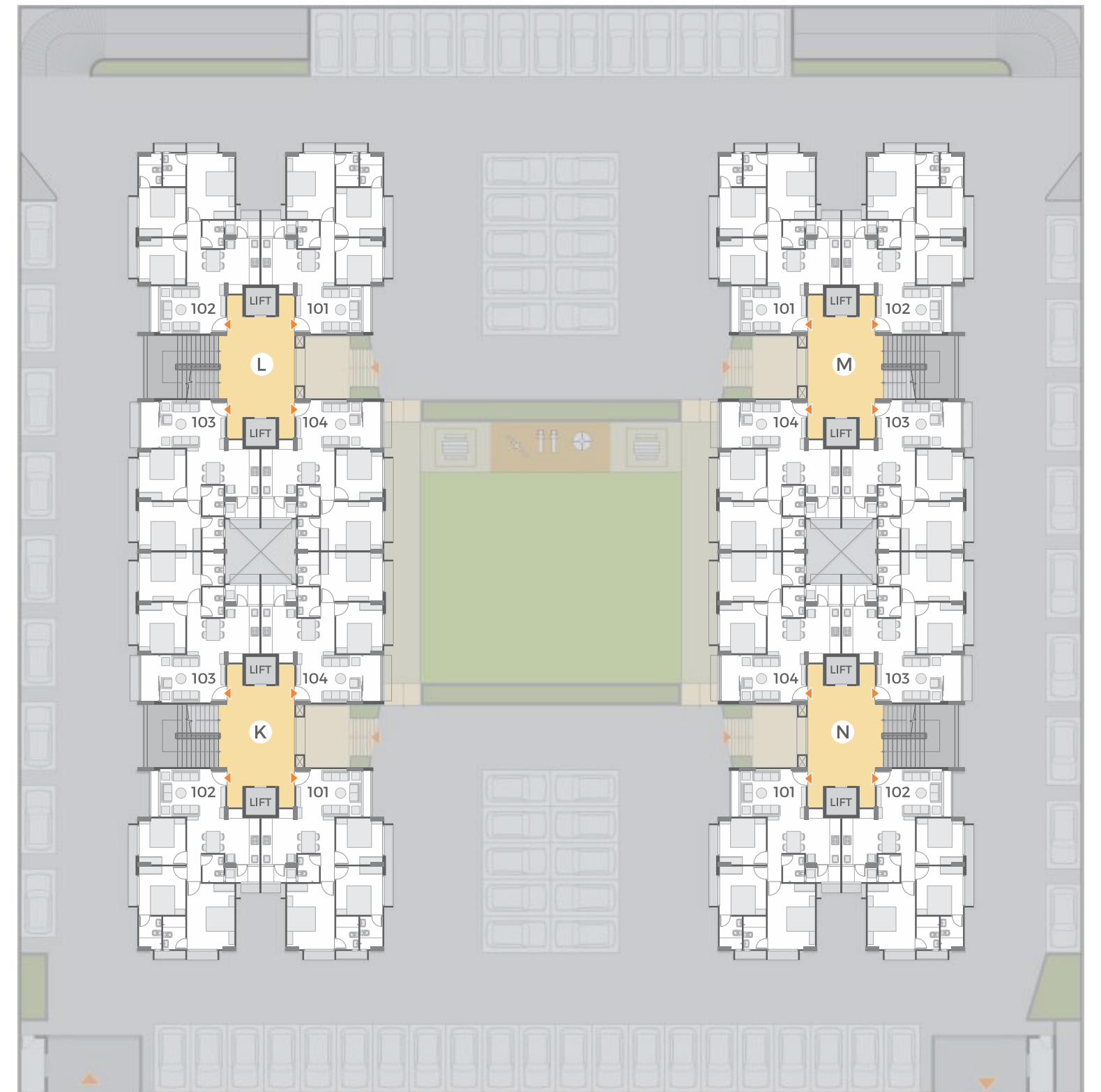
a purely residential community

# SITE PLAN



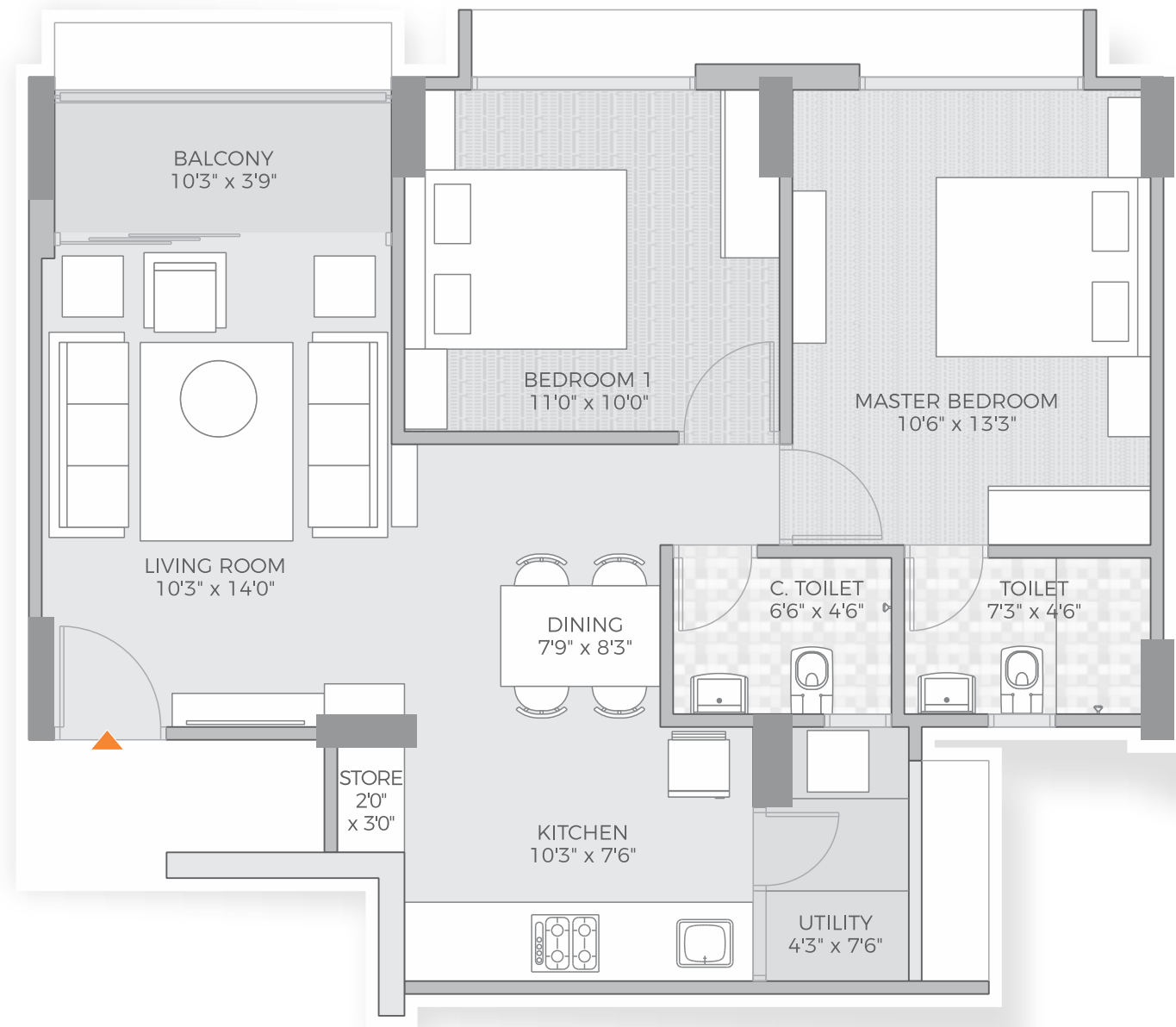
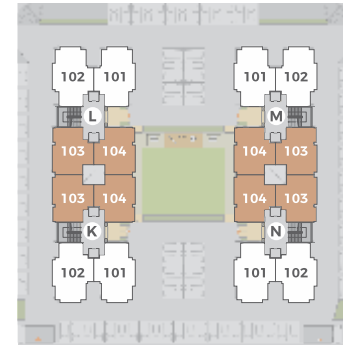
18M WIDE ROAD

# TYPICAL FLOOR PLAN

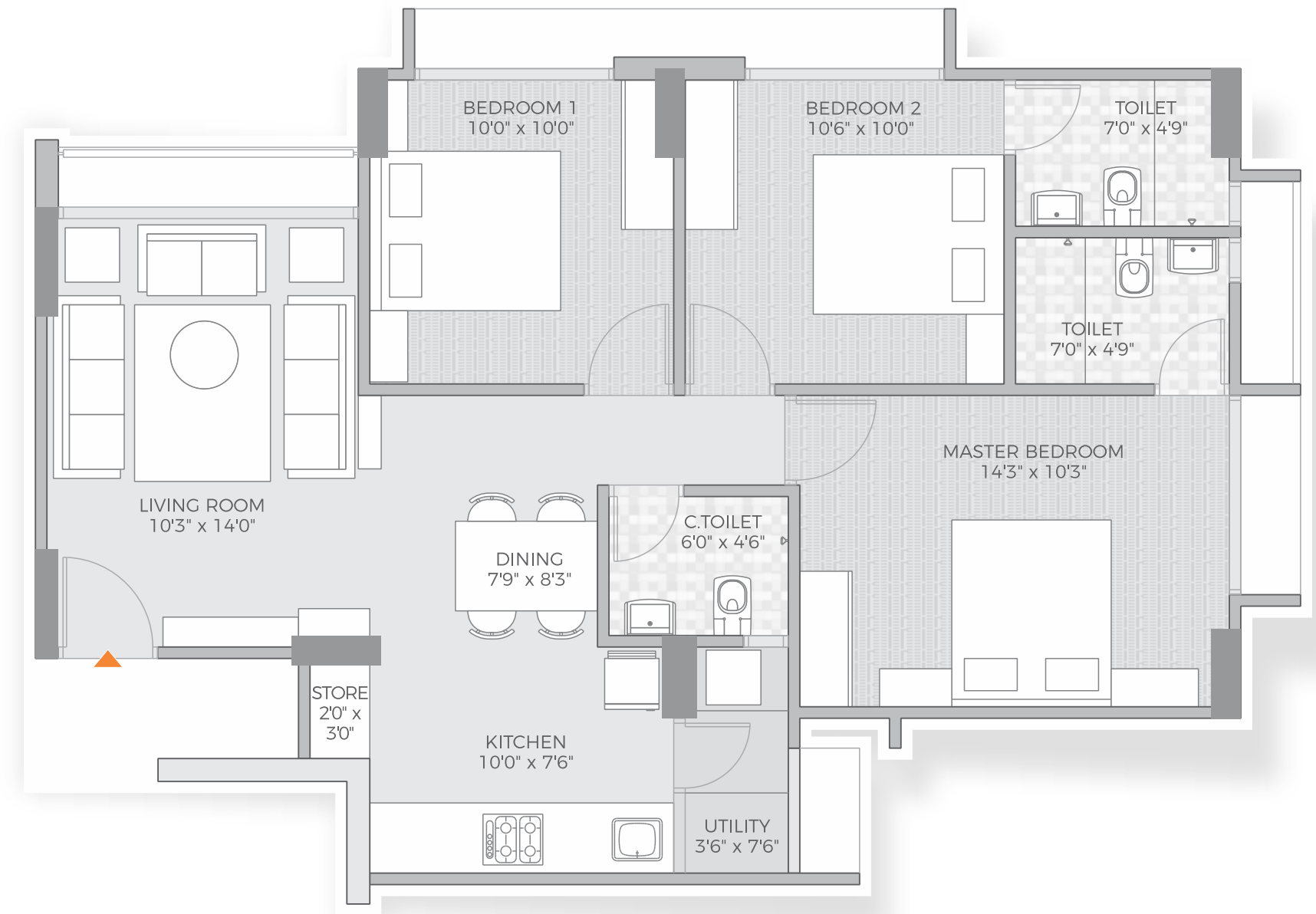
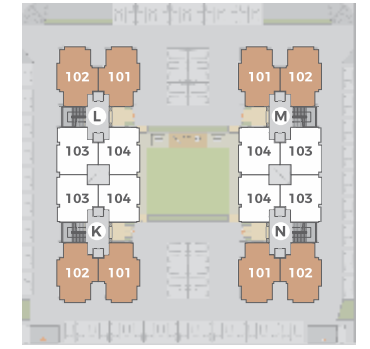




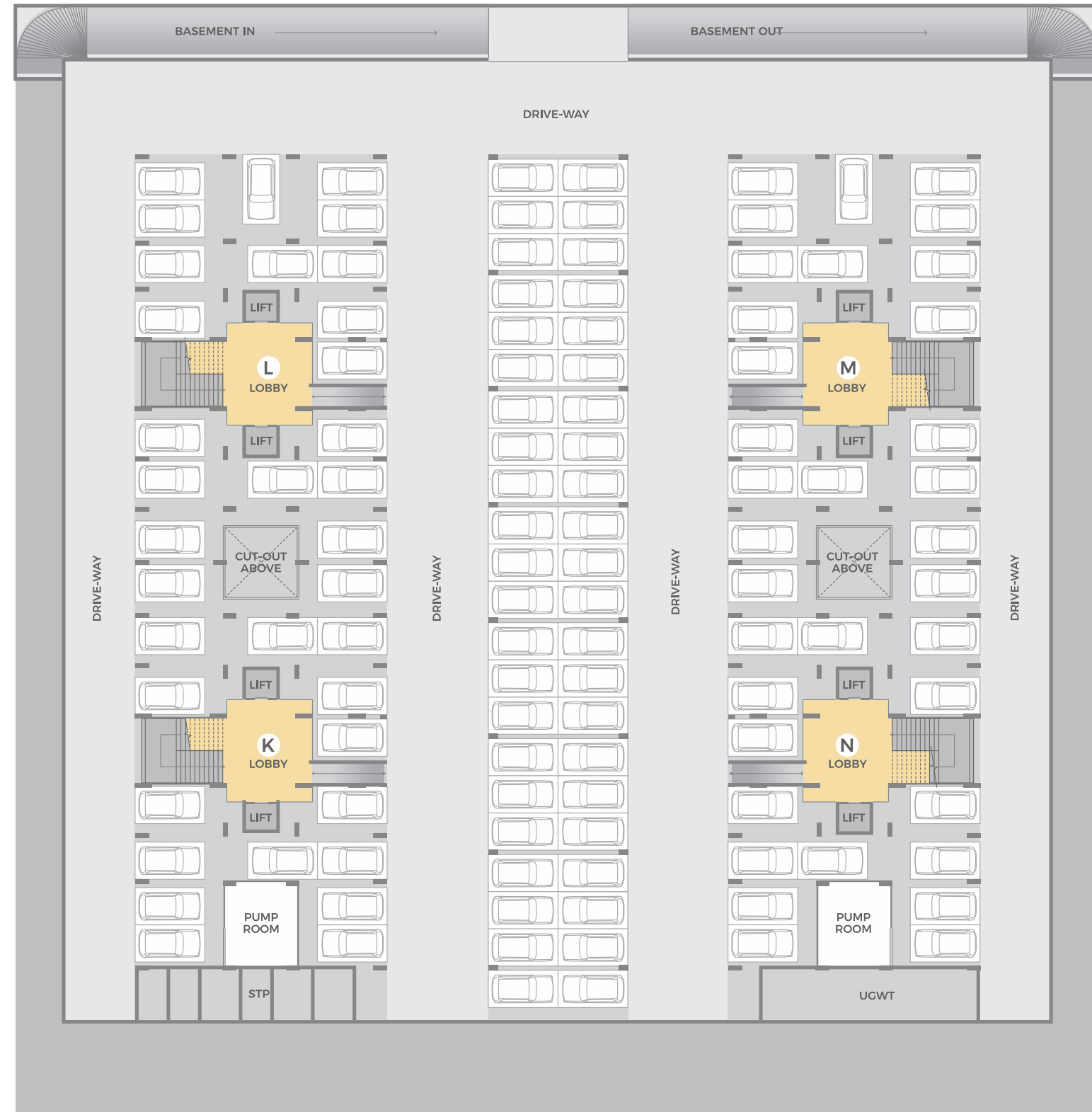
## 2 BHK UNIT PLAN



## 3 BHK UNIT PLAN



# BASEMENT PLAN



## SPECIFICATIONS

### WALL FINISH:

- Internal smooth finished plaster with 2 coat of birla putty
- Exterior double coated sand faced plaster with acrylic paint

### FLOORING:

- Double charge Vitrified or equivalent flooring in living and dining areas, kitchen and all bedrooms
- Kota stone or similar in wash area

### KITCHEN:

- Polished natural granite platform
- Stainless steel kitchen sink
- Vitrified tiles dado up to lintel level on wall above kitchen platform

### DOORS & WINDOWS:

- Decorative wooden main door with wooden frame & brass/s.s. fittings
- Flush doors with wooden frame in all bedrooms and bathrooms & brass/s.s. fittings
- Fully glazed powder coated aluminium sliding windows with stone revile

### BATHROOMS:

- Ceramic tile flooring in all bathrooms
- Coloured tiles dado up to lintel level

### ELECTRIFICATION:

- Concealed copper wiring with adequate A.C, Geyser and telephone points in each unit

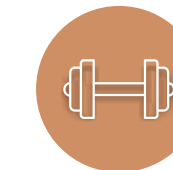
## AMENITIES



24 HOURS SECURITY



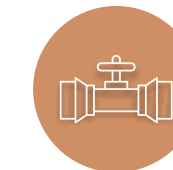
GARDEN AREA



CLUB HOUSE WITH GYM AND SPORTS ROOM



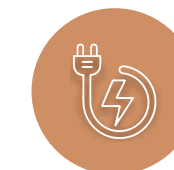
CHILDREN PLAY AREA



PRESSURE SYSTEM FOR WATER SUPPLY



RAIN WATER HARVESTING



GENERATOR BACKUP FOR COMMON UTILITIES



CCTV AT GROUND LEVEL



INTERCOM SYSTEM



# KEY PLAN



MAHER  
HOMES 4

DEVELOPER



---

**VISHWANATH**  
realtor

Sales Office: B/H Maher Homes 2, Nanaji Deshmukh Ave, Opp. Club O7,  
Sky City Rd, Off S.P. Ring Rd, Shela, Ahmedabad 380058

Timings: 10 am – 6pm all days | Tuesday Closed

Ph: +91 9879789681

Email: [info@vishwanathrealtor.com](mailto:info@vishwanathrealtor.com)

Web: [www.vishwanathrealtor.com](http://www.vishwanathrealtor.com)

FB: [www.facebook.com/vishwanathrealtor](https://www.facebook.com/vishwanathrealtor)

[www.gujrera.gujarat.gov.in](http://www.gujrera.gujarat.gov.in)

RERA Reg. No.:

Architect  
**Groundwork Architecture**  
Ph.: 079 26926004

Structural Consultant  
**PNL Engineering Consultants Pvt Ltd**  
Ph: 079 26446318

Plumbing Consultant  
**Vraj Sanitation**  
Ph.: 0265 2487479

Specific Notes

- This brochure is meant for private circulation only.
- The developer reserves the rights to change, revise or make any additions, omissions, alterations or modifications to the scheme as a whole, or part thereof at their sole discretion without any prior notice. Such changes will be binding on all members.
- All dimensions presented herein are approximate and measurements are made from unfinished surfaces.
- External changes of any sort will not be permitted. Internal changes may be permitted with prior written permission from the developer and will be charged separately.
- This brochure is meant for the purposes of presentation only, and should not be treated as any form of binding document, offer or legal contract.
- Site development is subject to clearances from AUDA and other government entities.

Disclaimer :

Whilst reasonable care has been taken in the preparation of the brochure, the developer and its agents shall not be held responsible for any inaccuracies in its contents.