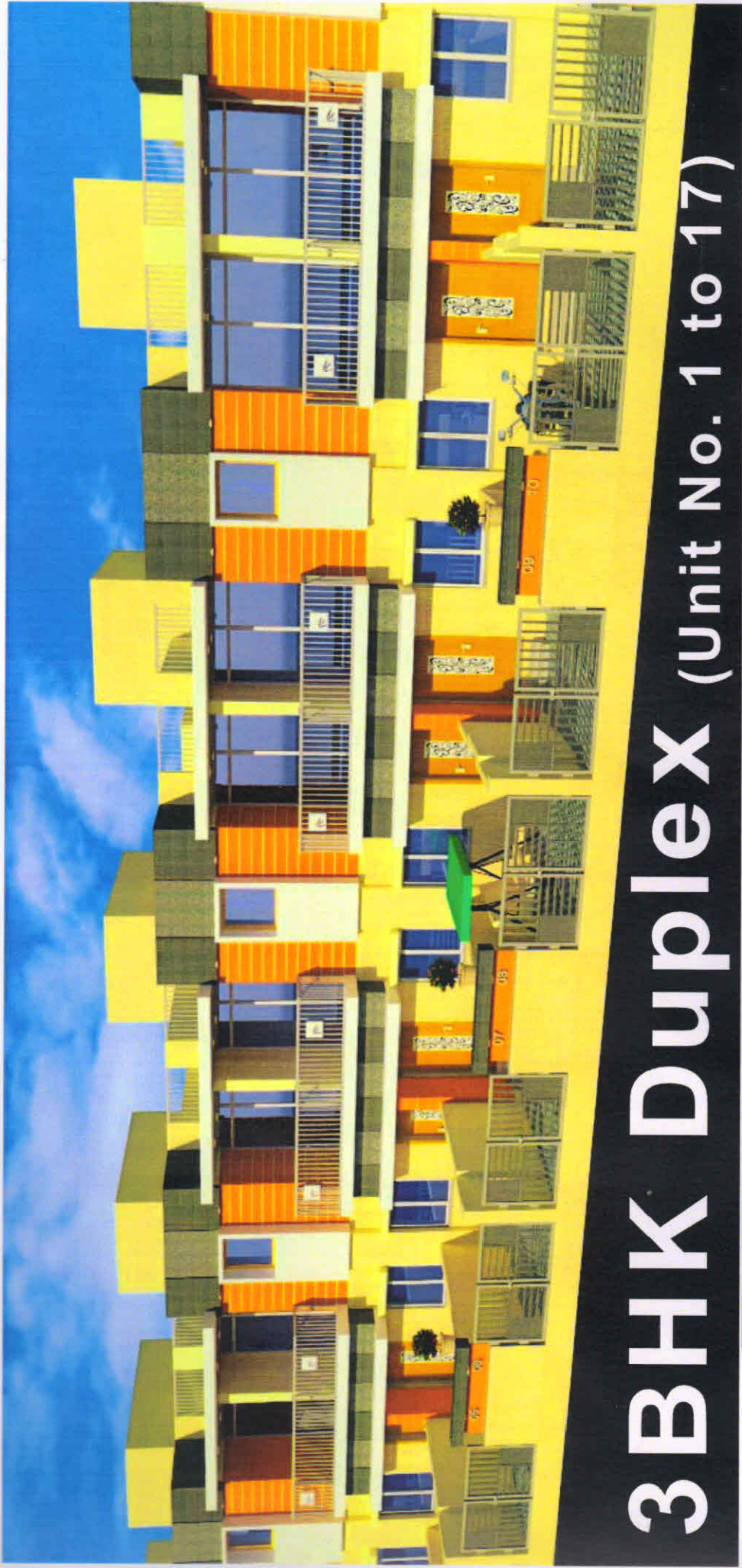


AL-AMAN RESIDENCY

A Living With Pride In Your Own Dream House " Al - Aman "



3BHK Duplex (unit No. 1 to 17)

Contact : S. S. Mansuri
M. 98980 28264
Email : mansurisugra1964@gmail.com

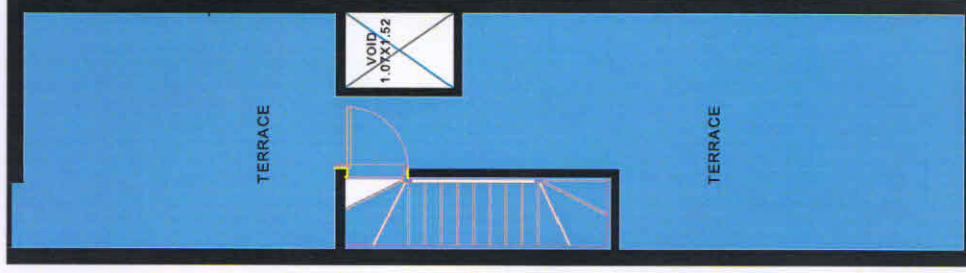
Project Add. : PANSAR ROAD,
Opp. Sakhi Water,
Kalol, Dist. Gandhinagar, 382721

Typical Plan

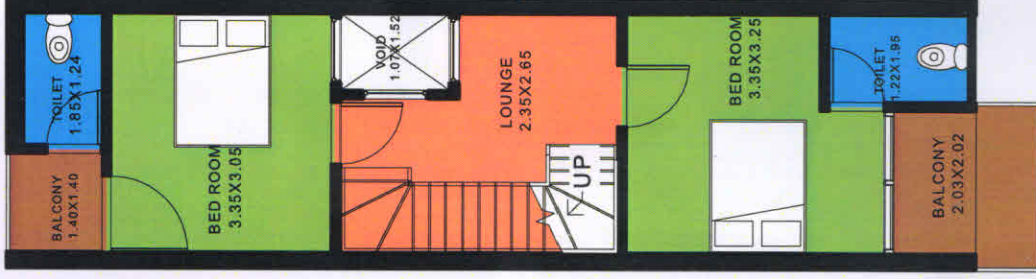


Arct. Engr. by : Jignesh H. Almoula
 Strct. Engr. by : Jigar D. Chokshi

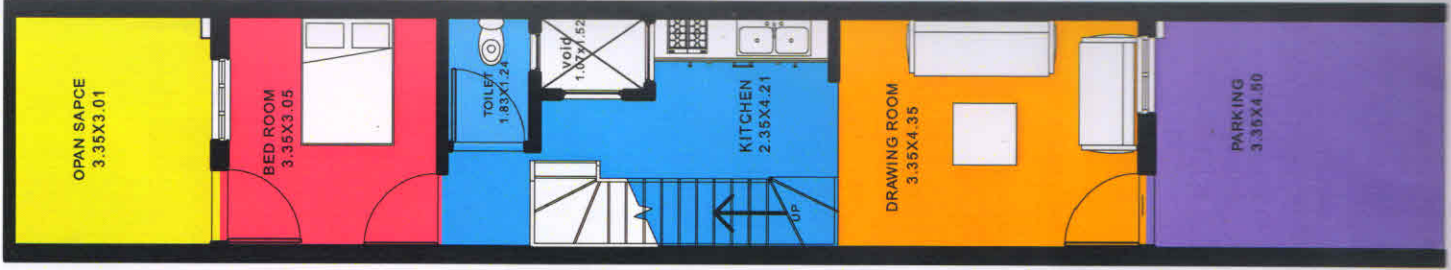
RERA Reg. No. :
 Guj. RERA Authority Website :



TERRACE FLOOR



FIRST FLOOR



GROUND FLOOR

AL-AMAN TENAMMENT

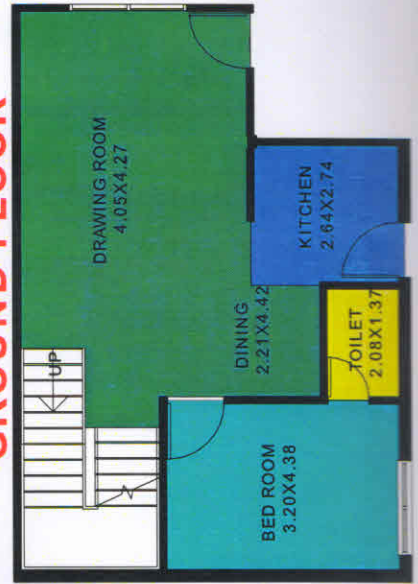


(Unit 18 & 19)

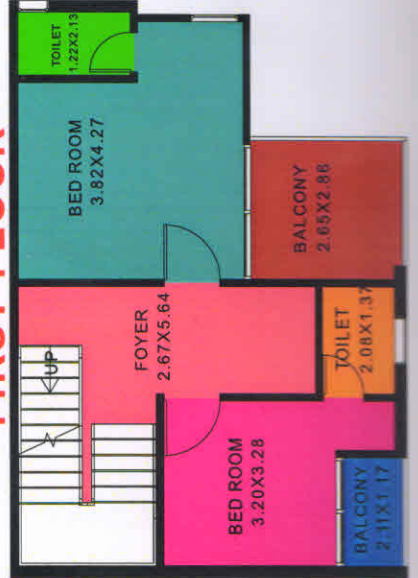
3 BHK

Typical Plan

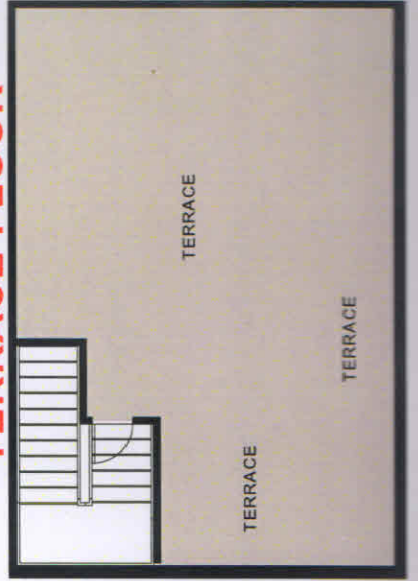
GROUND FLOOR



FIRST FLOOR



TERRACE FLOOR



SPECIFICATIONS

Flooring

Vetrified Tiles In All Rooms
Anti Skid Tiles In Parking
Balcony, Passage And Toilets

Toilets

Concealed Plumbing &
Sanatary Wares With
Branded C.P.fitting.
Bathroom Glazed Tiles
Dado Upto Lintel Level
Anti Skid Tiles In Flooring.

Doors

Decorative Main Door,
Other Flush Door
In Both Side Sunmica
With Granite Framing,
Toilets Door In Sintex,
Stair Cabin Door In M.S.

Electrification

Concealed Copper Wiring
With Number Of Points
In All Rooms
ISI Wires, MCB And ELCB.

Windows

Aluminum Anodise
Windows With Sliding Door
& M.S. Grill.
Granite On Windows Sills.

Colours

Internal Walls Finished
With Wall Putty,
Weather Shield Acrylic
Emulsion Paint,
Textures Stone Plaster
As Per Elevation.

Kitchen

Black Granite Platform,
Glazed Tiles Dedo Upto
Lintel Level &
Stainless Steel Sink.

