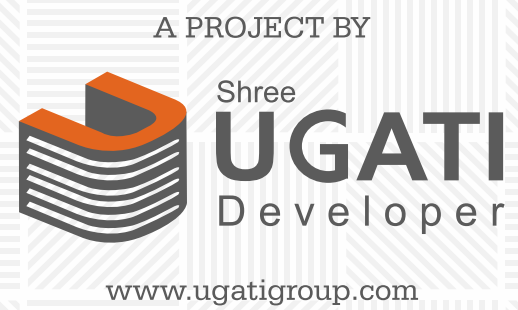


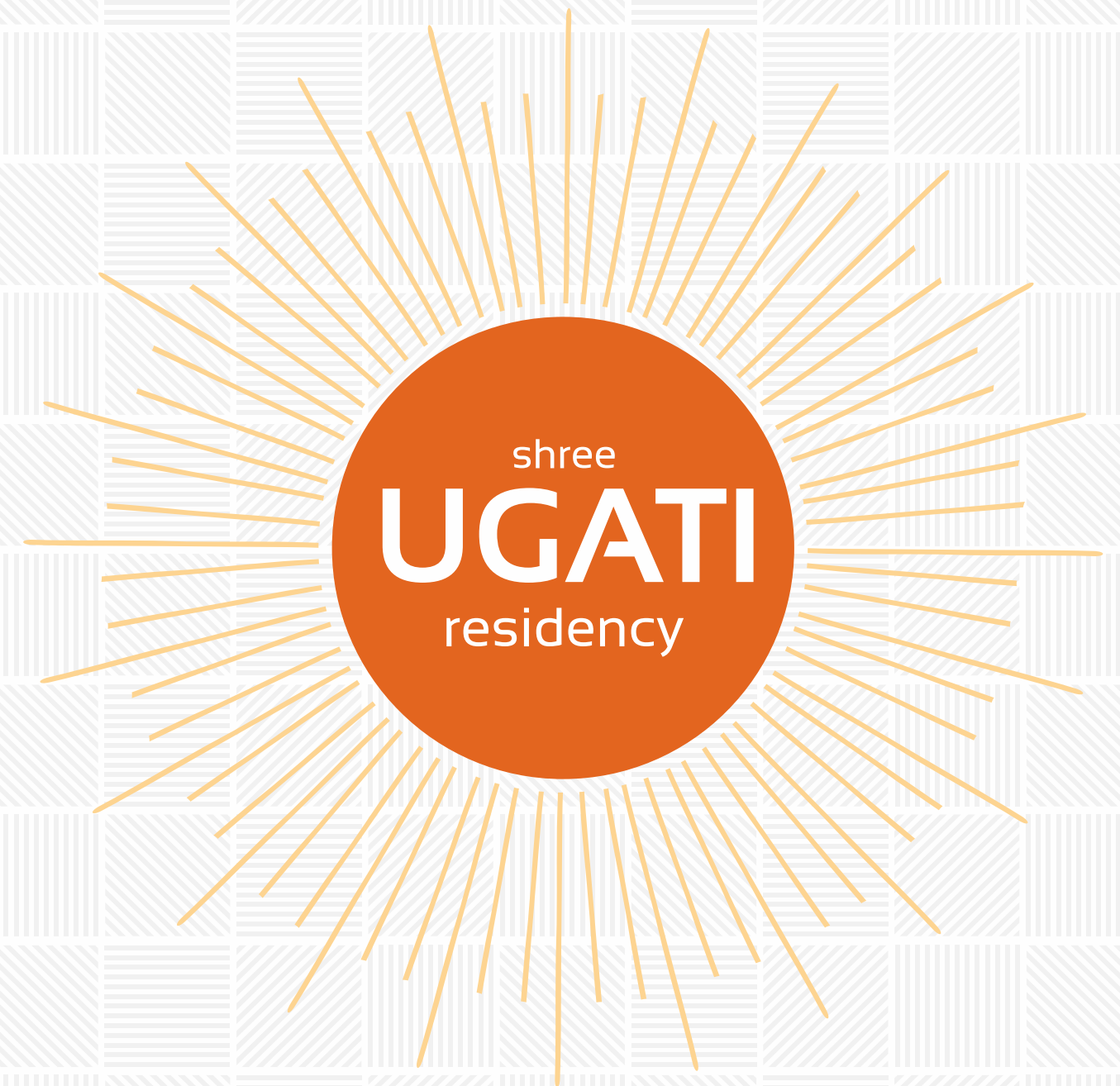
Enlarge your moments of happiness



CONTACT :
+91 98798 25169
+91 88666 31144

ARCHITECT :
KU-KE
ASSOCIATES

SITE :
SHREE UGATI RESIDENCY
B/h. Satkar Bungalows, Opp. HDFC Bank,
KK nagar Road, Ghatlodiya, Ahmedabad.



2 & 3 BHK spacious living lifestyle...

Come live and enjoy life with your loved ones

Welcome to "Shree Ugati Residency"
designed with towers offering
2 & 3 BHK spacious living lifestyle.

"Shree Ugati Residency" encourages
green living to protect the environment.





Home is not a place it's a feeling

The beautiful "Shree Ugati Residency" is known for its color and preciousness. We inspired by and our project resemble are unique facets.

Our project "Shree Ugati Residency" also has unmatched features like attractive elevation. Dashing design & equipped with limitless luxury, the perfect blend makes "Shree Ugati Residency" spectacular architectural wonder of Ahmedabad.





A necklace of graceful residential options

Apartments studded with the ornaments of contemporary living. Count everything that spells class, comfort, convenience and you will find it right here.



ENTRANCE GATE



SECURITY CABIN



24 HRS. CCTV

GROUND FLOOR PLAN



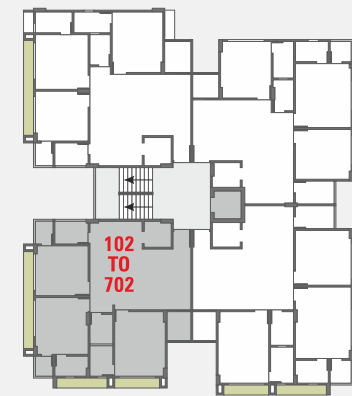
TYPICAL FLOOR PLAN





3 BHK A-BLOCK UNIT PLAN

01 - 101 TO 701



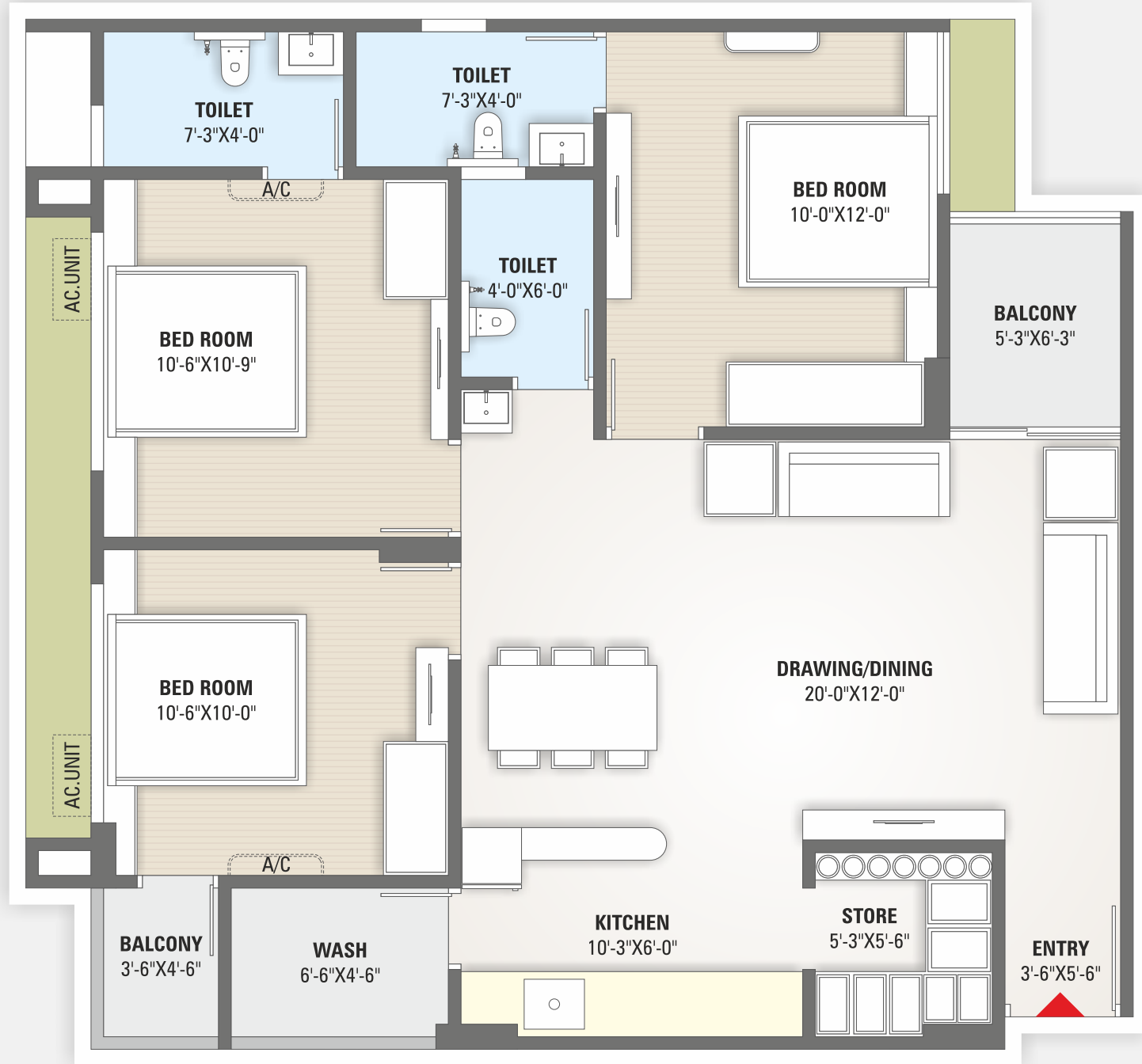
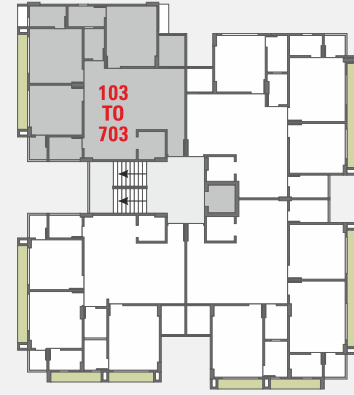
3 BHK A-BLOCK UNIT PLAN

02 - 102 TO 702



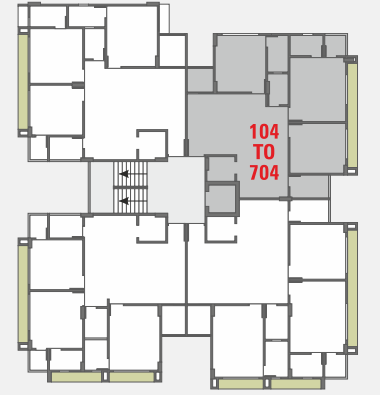
3 BHK A-BLOCK UNIT PLAN

103 TO 703

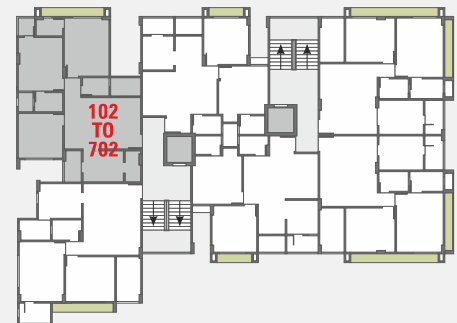


3 BHK A-BLOCK UNIT PLAN

104 TO 704

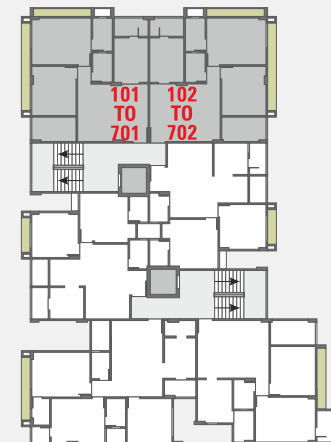
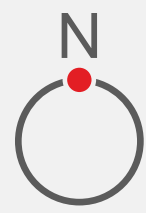






3 BHK B - BLOCK UNIT PLAN

102 TO 702



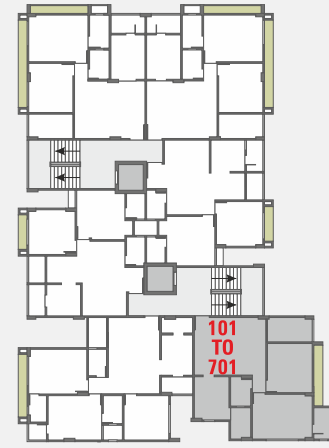
2 BHK C - BLOCK UNIT PLAN

101 TO 701
102 TO 702



2 BHK B - BLOCK UNIT PLAN

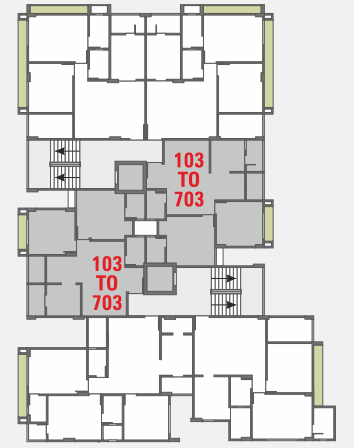
101 TO 701



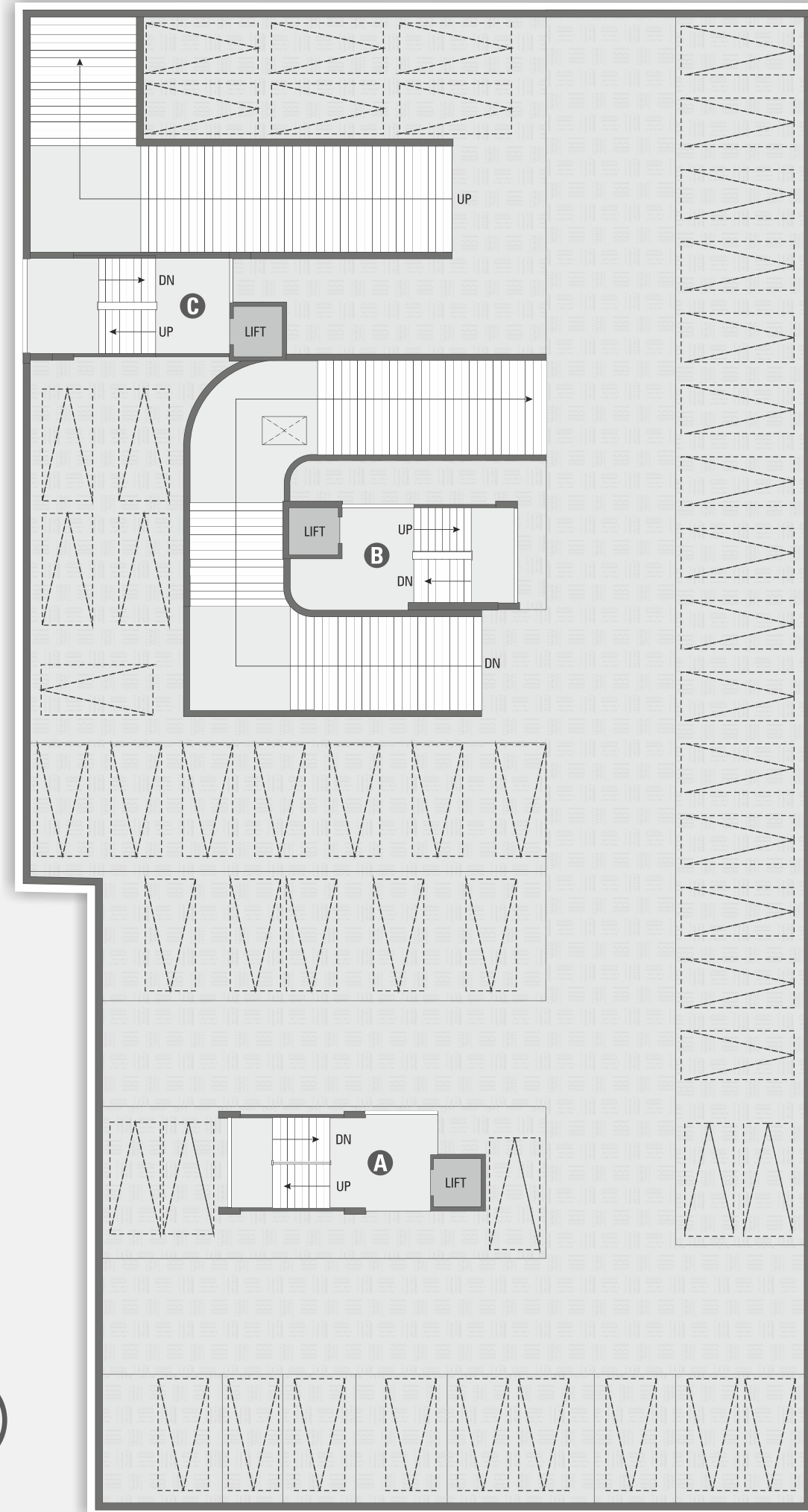
2 BHK B & C BLOCK UNIT PLAN

B - 103 TO 703

C - 103 TO 703



BASEMENT PLAN



Step into the space of luxury

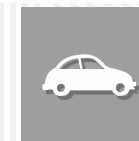
Shree Ugati Residency is perfectly located in a neighborhood that boasts the comfortable life demands, can easy access to every part of life here is truly well-balanced.



TERRACE JOGGING TRACK



24 HRS. WATER



CAR PARKING







Exceptionality the art of living...

Wake up to a life that's
less experienced.

Step - in your paradise of comfort.
Discover an exceptional world
designed for you.



LUSH GREEN GARDEN



SIT OUT ZONE



KIDS PLAY AREA



SPECIFICATIONS



STRUCTURE

Earthquake resistant R.C.C. frame structure as per new by laws.



FLOORING

Vitrified tiles for entire flooring in all apartments.



WALL FINISH / ELEVATION

Internal smooth mala finish plaster with putty and external architectural textured finish with acrylic paint.



DOORS & WINDOWS

Decorative laminated wooden main door with wooden frame, all other door will be flush door and anodized fully glazed window with stone gems.



TOILET

Tiles on floor and walls up to lintel level. Branded sanitary & bath fittings.



KITCHEN

Mirror polished granite platform with S.S. sink, glazed tiles up to lintel level.



ELECTRIFICATION

Branded ISI modular switches with concealed copper wiring and adequate number of points. MCB distribution panel.



PLUMBING

ISI CPVC and UPVC pipes for water supply, PVC & SWR pipes for solid waste and drainage systems. Percolation recharge wells as per the norms. Branded CP fittings.

• Good environment is the main Feature of the Society. • This Brochure is just for an easy presentation of the project and should not be treated as a legal document. • The entire dimensions given are approximate & unfinished. • Irregular payment cause for cancellation of the booking, refund would be given only after the said apartment has been resold (payment received form new purchaser & that to after deducting the cancellation charge.) • The details, facts specification & figures mentioned are compliance for information purpose only and are subject to modification / compliance require as Rera act. • Applicable stamp duty, registration charges, legal expenses, GST at applicable rate or any taxes levied by the government authority are to be borne by members. • Subject to Ahmedabad Jurisdiction. • Total payment by Cheque / DD of NEFT or RTGS in favour of "SHREE UGATI DEVELOPER"

