

LOCATION MAP



RADHIKA HOMES

3 BHK BUNGALOWS

Project by
SHUBHAM DEVELOPERS

Architect
prakalpanarchitects

Site : **RADHIKA HOMES**
Behind Tulsi Residency, Opp. Chitrakoot Farm,
Vastral-Singarva Road, Singarva, Ahmedabad.

Contact : **70697 41838**
Email : shubhamdevelopers@gmail.com



SCAN FOR LOCATION

LUXURY | LIFESTYLE | LIVING

A GRAND WELCOME

3 BHK LUXURIOUS BUNGALOWS



Presenting RADHIKA HOMES 3 BHK Luxurious bungalows,
a symbol of a luxury, lifestyle, living

There comes a time in your life, when you feel your
success, status and lifestyle deserves a better address...





A JOYFUL AMENITIES



ENTRANCE
GATE



C.C.T.V
CAMERA



LANDSCAPE
GARDEN



SENIOR CITIZEN
SITTING



CHILDREN
PLAY AREA

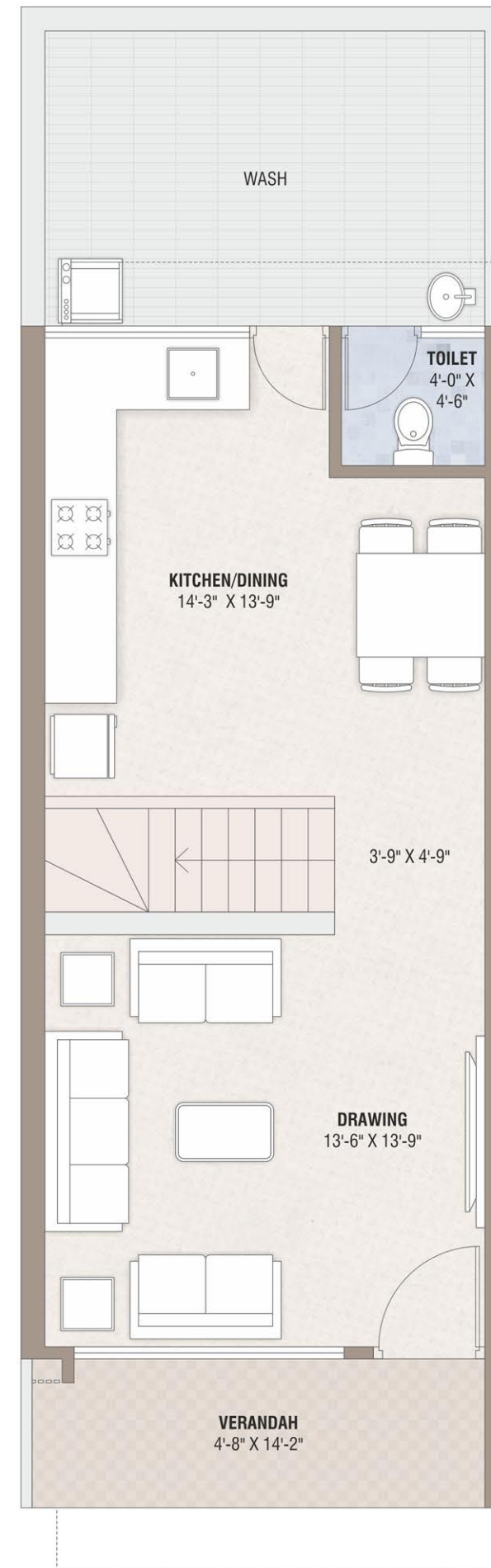


24 x 7
WATER SUPPLY

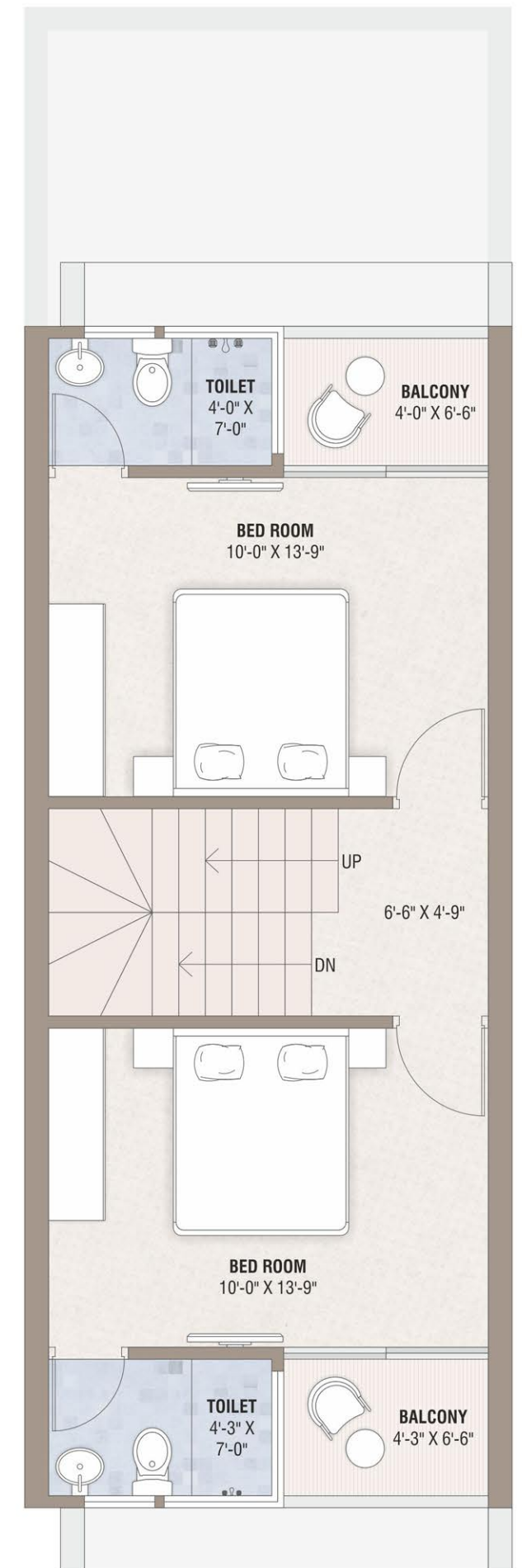
TYPE-1 | BUNGALOWS 1 to 9



LAYOUT PLAN



GROUND FLOOR

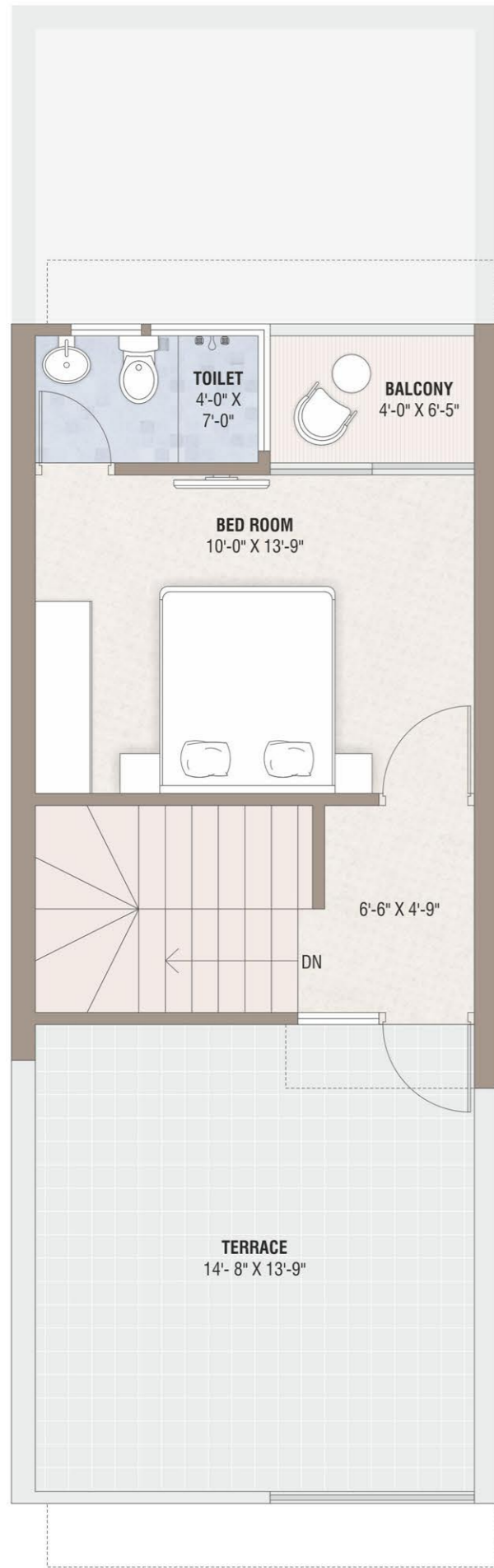


FIRST FLOOR

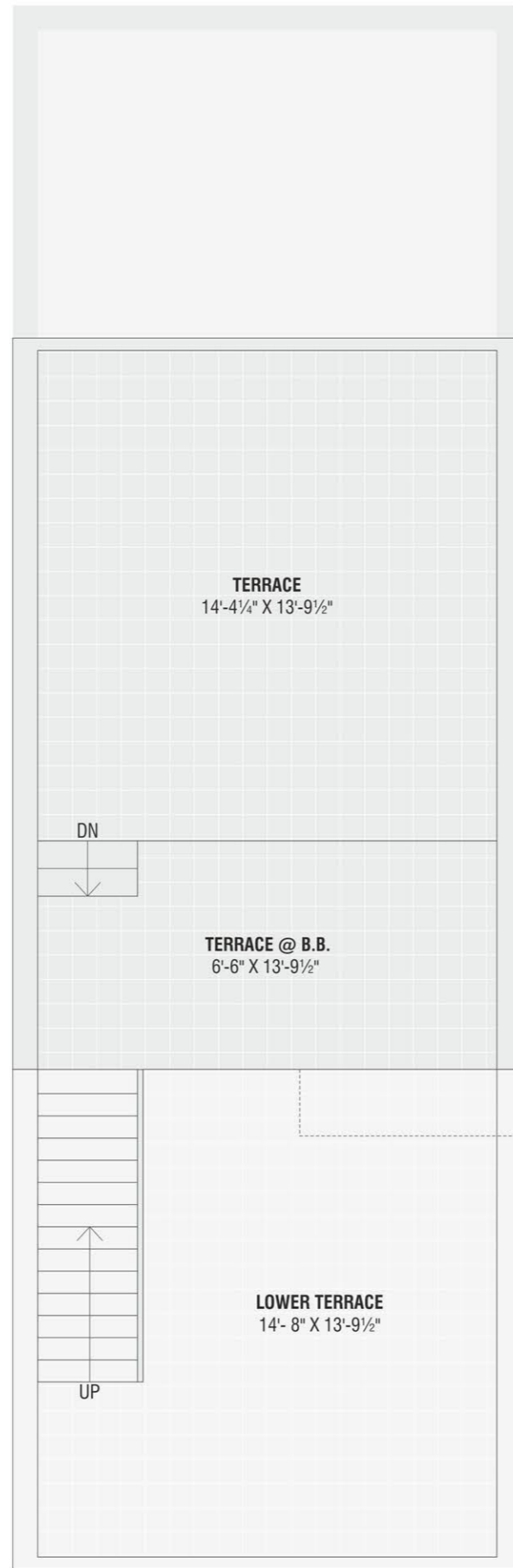
TYPE-1

BUNGALOWS
1 to 9

**RADHIKA
HOMES**
3 BHK BUNGALOWS



SECOND FLOOR

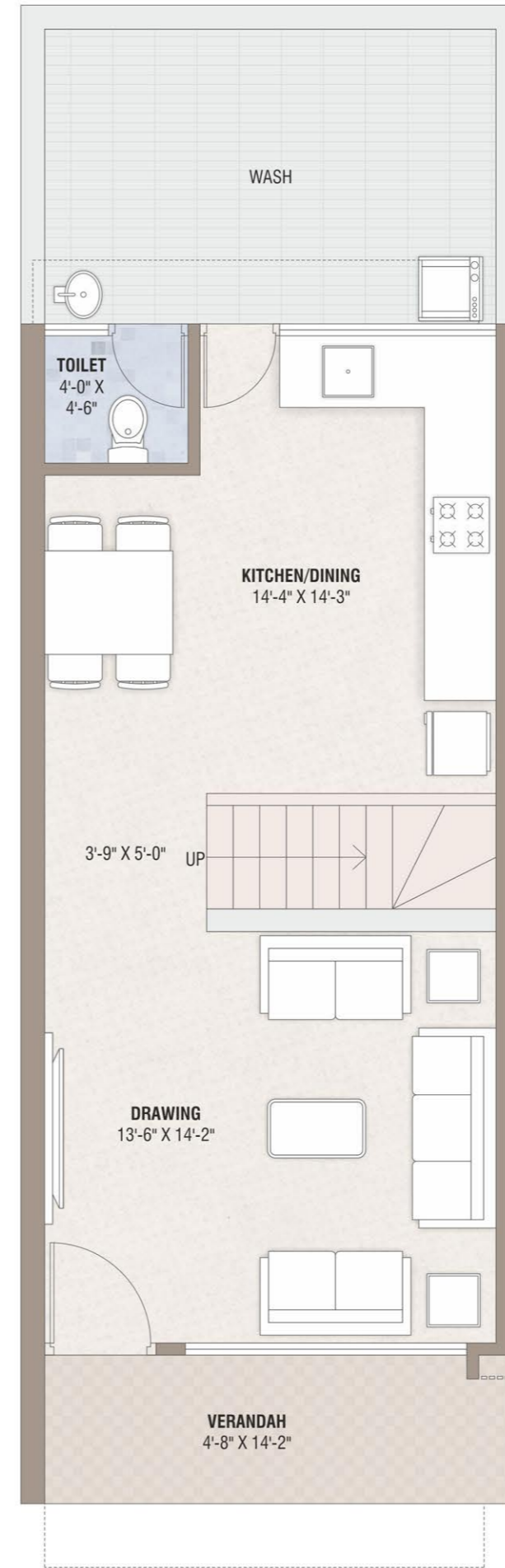


TERRACE FLOOR

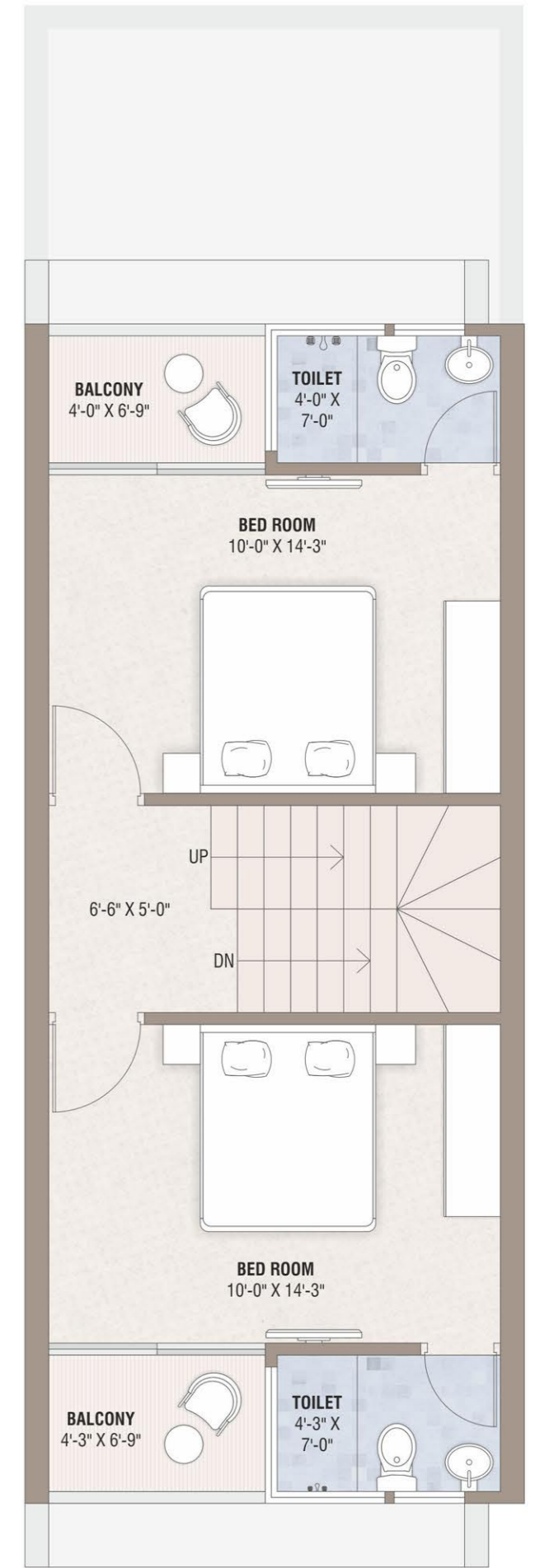
TYPE-2

BUNGALOWS
10 to 21

**RADHIKA
HOMES**
3 BHK BUNGALOWS



GROUND FLOOR



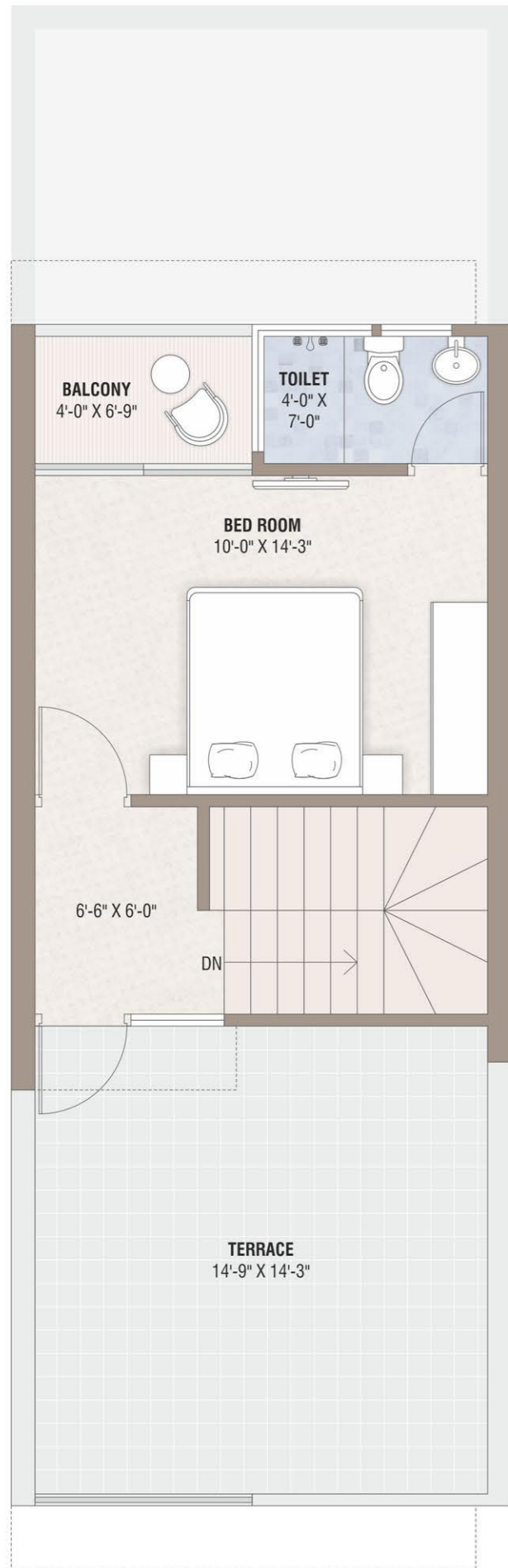
FIRST FLOOR

TYPE-2

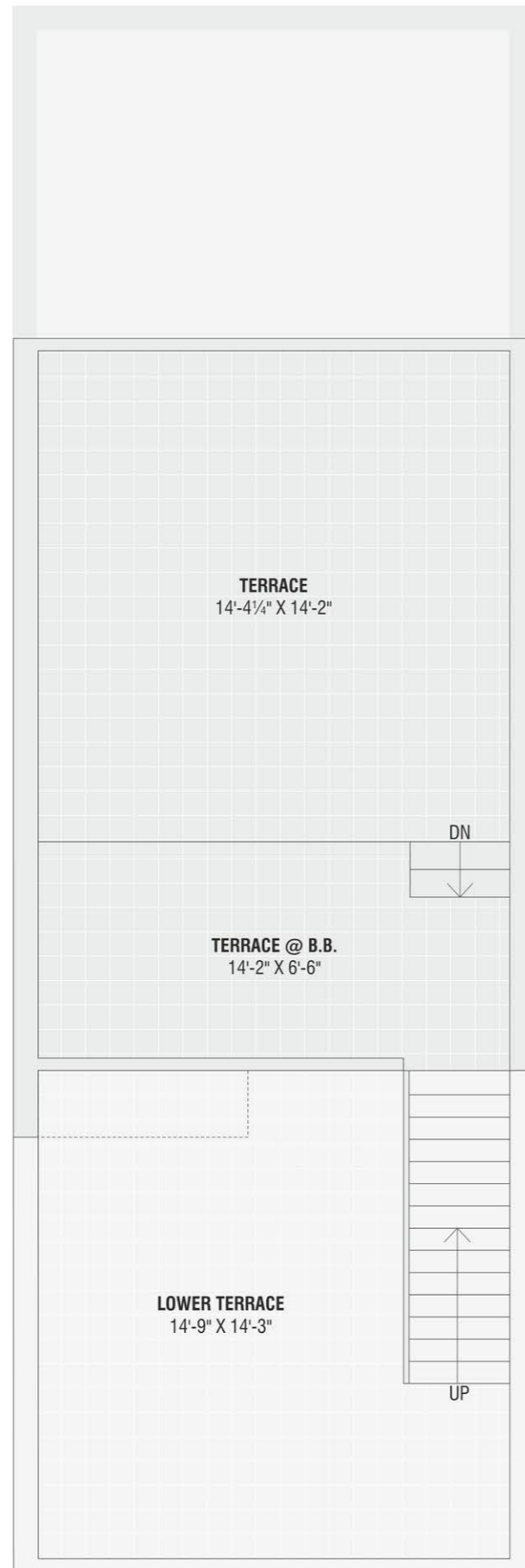
BUNGALOWS
10 to 21

RADHIKA HOMES

3 BHK BUNGALOWS



SECOND FLOOR



TERRACE FLOOR



SPECIFICATION



STRUCTURE

- Quality Controlled earth quake resistant, Load Bering R.C.C. Structure



WALL FINISH

- Internal plaster single coat mala plaster with two coat putty finish.
- Double coat plaster with external acrylic paint.



DOOR & WINDOWS

- Main Door Designer flush door. Branded lock and wooden frame.
- Other Doors Flush Door with S.S. brass fittings.
- Superior Quality Powder coated aluminum sliding window with granite revile.



FLOORING

- Vitrified flooring in living, dining, kitchen and all bedrooms.
- Mate finish tiles in parking.



KITCHEN

- Mirror polished granite platform with SS sink.
- Decorative tile dado upto lintel level.



TERRACE

- China mosaic in terrace area.



BATHROOMS & PLUMBING

- Digital ceramic tiles till lintel level.
- CPVC-UPVC pipe and branded plumbing accessories with company warranty.
- Branded ceramic fittings.
- Over head PVC water tank
- Electric geyser point in all bathrooms.



ELECTRIFICATION

- Single phase copper wiring with ISI pipes, wires & branded modular switches.
- ELCB/MCB with internal distribution board.
- AC point in all Bed rooms.
- Provision for TV Cable.

NOTES :

- Developers reserve all the rights for any changes in plan, elevation, specification, amenities and other details were in to comply with statutory regulations and shall be binding to all the members.
- This brochure is only for advertisement and it shall not be treated as part of legal document.
- Changes / Alteration of any nature by member in external elevation and which are affecting the design of the structure shall not be permitted during and after completion of the scheme.
- in case of any dispute Ahmedabad court shall prevail.