

# HARSH PRIME

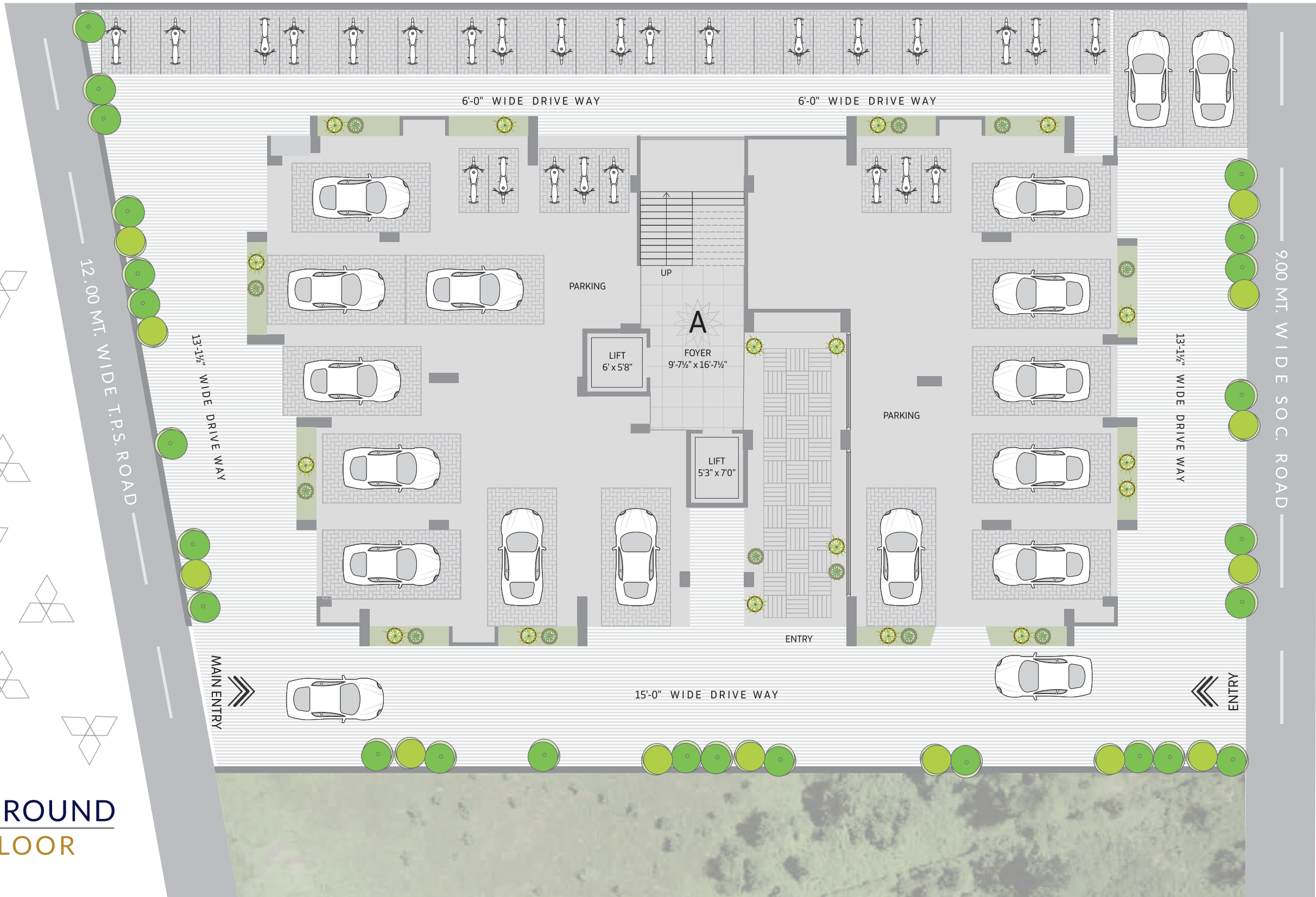
3 BHK SMART HOMES



# HARSH PRIME



# GROUND FLOOR



9.00 MT. WIDE T.P. ROAD





HRSH  
CENTRE

# TYPICAL

1<sup>ST</sup> TO 6<sup>TH</sup> FLOOR



# TYPICAL

## 7<sup>TH</sup> FLOOR



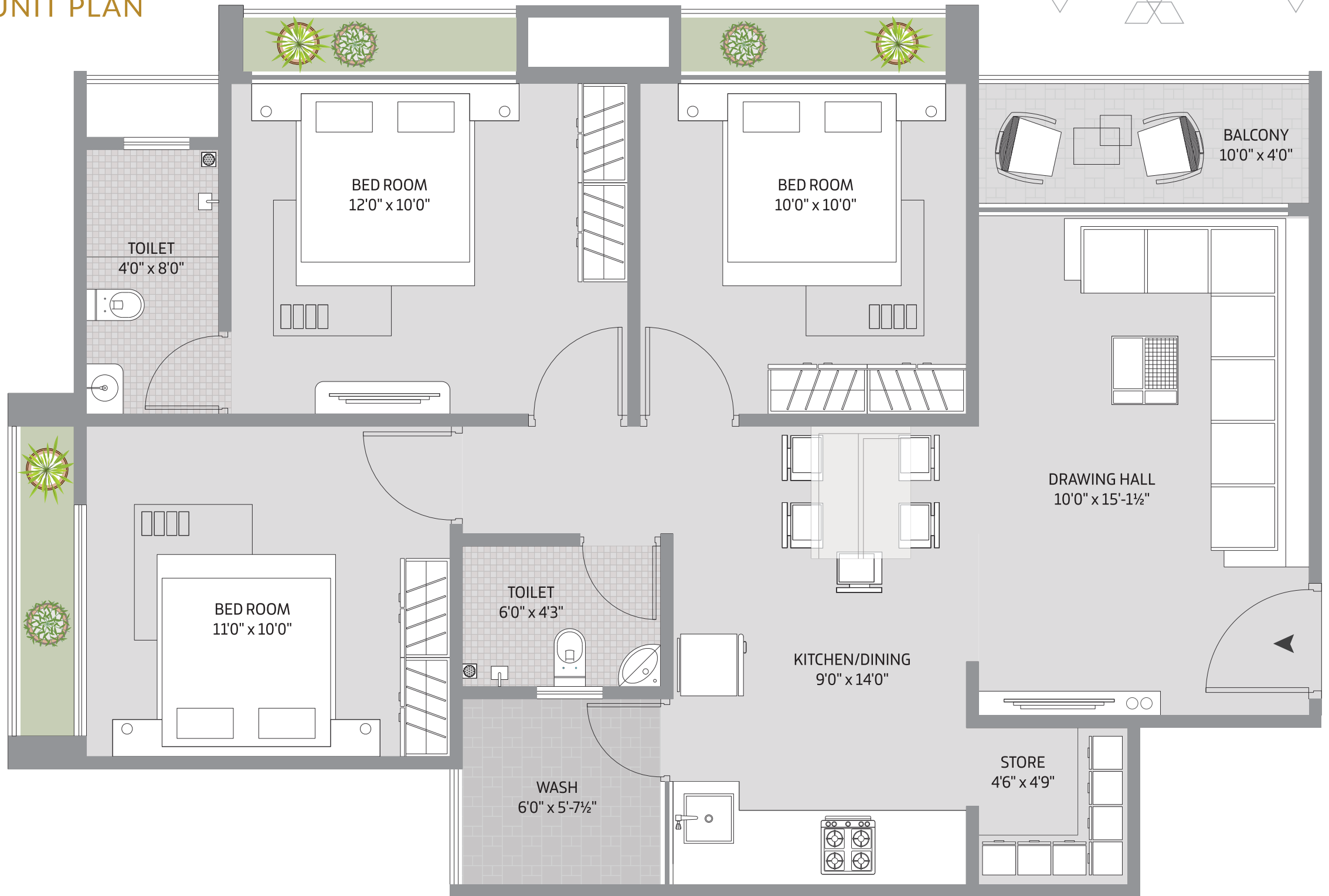






# 3BHK

## UNIT PLAN



# AMENITIES



VISITOR  
PARKING



EACH BLOCK  
2 LIFTS



CCTV  
CAMERA



BEAUTIFUL  
FOYER



24 HOUR  
WATER SUPPLY



SENIOR CITIZEN  
SITTING



SECURITY



# SPECIFICATION

## **WALL FINISH**

*Internal : Smooth finish Mala Plaster with white putty of Birla or Similar*

*External : Double coat sand faced plaster.*

## **FLOORING**

*600 X 600 mm Double Charged Vitrified tiles flooring in Drawing, Kitchen & Dining Room.*

*600X600 mm Double Charged in all Bedrooms.*

## **KITCHEN**

*Standing polished natural granite kitchen platform with Stainless Steel Sink & Glazed Tiles dado above the platform up to Lintel Level.*

## **DOORS**

*Decorative main door with Wooden frame having Lock of reputed company internal doors flush Doors with Colours.*

## **WINDOWS**

*Aluminum anodized Section Sliding windows with glass&stone Jambs, Outside M.S. Grill with Colour.*

## **TOILET**

*Ceramic tiles flooring in all toilets, Glazed tiles dado up to Lintel level.*

## **PLUMBING**

*Concealed plumbing of good quality UPVC&CPVC pipes like "Astral" or Equivalent C.P.Fittings of reputed brand like "Jaquar" or Equivalent. Sanitary ware of reputed brands.*

## **ELECTRIFICATION**

*Single phase Meter+MCB&ELCB Tripper with concealed wiring with a dequate points with quality fittings.T.V.&Telephone points in all Bedrooms.*

## **PAINT**

*Exterior Painting of texture/acrylic paint. Internal walls*

*Double Coat Putty Finish.*

## **LIFTS**

*Fine quality fully automatic lifts like Omega, Trio or similar.*



# HARSH PRIME

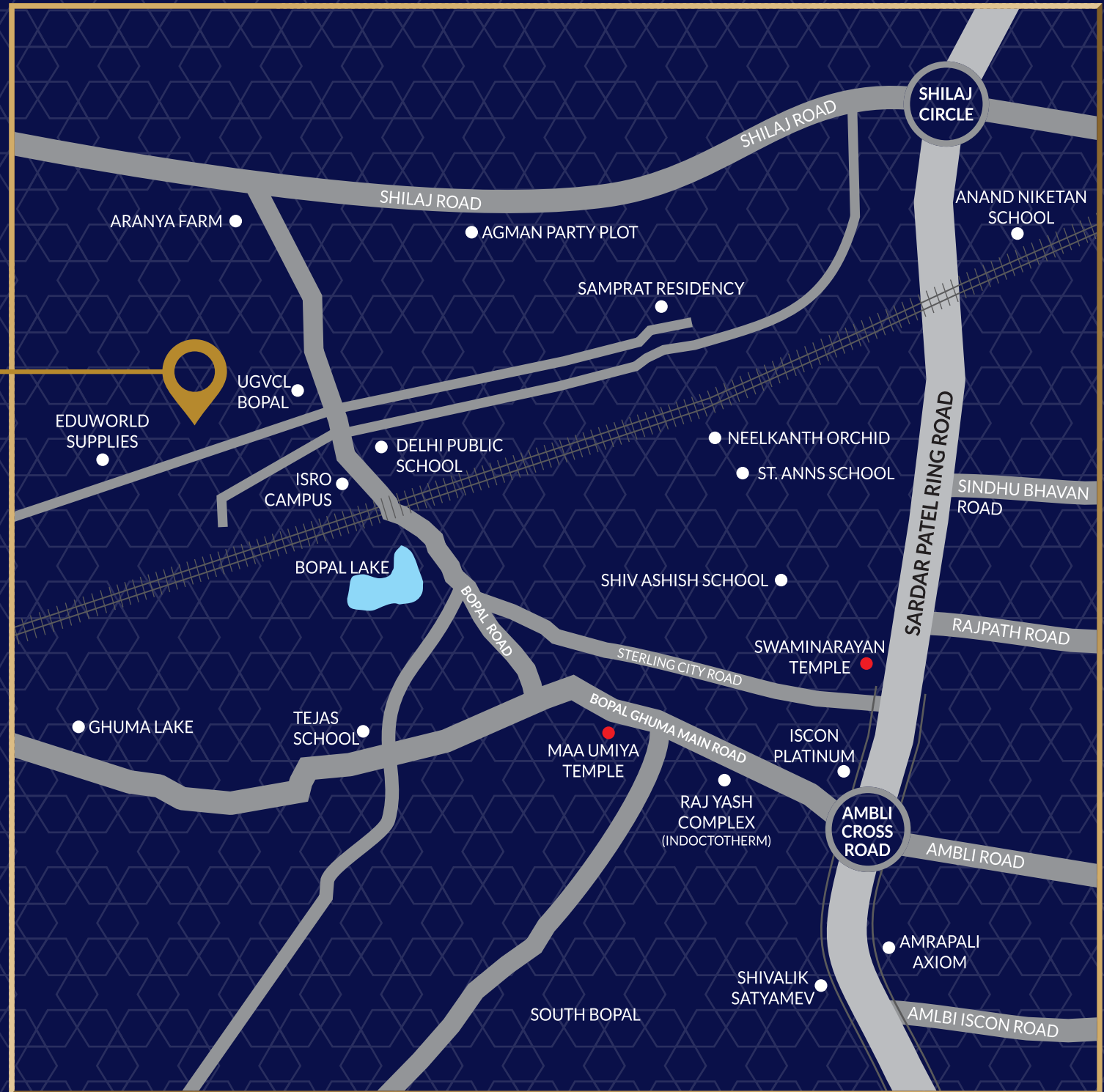
Project by:

**NILKANTH  
DEVELOPERS**

Nr. DPS School, opp. GEB,  
Bopal, Ahmedabad-380058

M: +91 8511885323

E : nilkanthdevelopers9@gmail.com



RERA NO.: