



a canvas of

spaces

a home is not just a place to live but a home is your reflection. we know that each home needs space for your stories, your image and your character.

we have designed spaces just for that. each home has large spaces that is like a blank canvas for you to come in and paint your world into it.





an approachable

solitude

the current lifestyle is full of distractions and noise. distractions of people, work and many others. in this chaos the home should not be just a place to go but a space that can let you and your family escape into a time that you can call only yours.

experience unprecedented

LUXURY

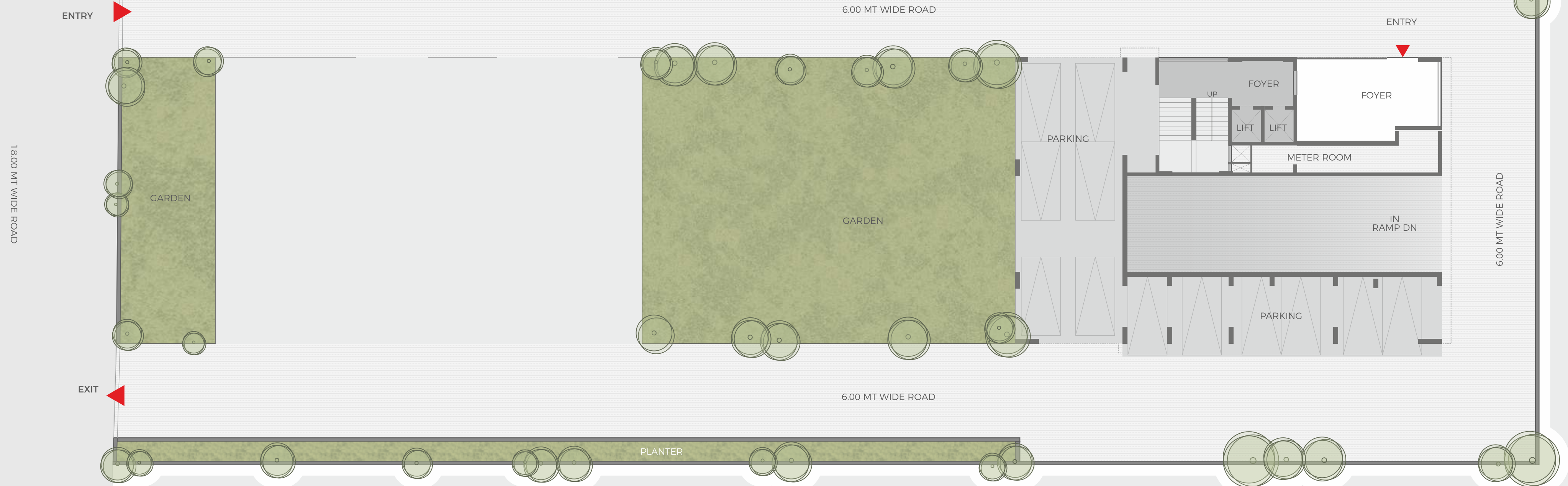
we believe luxury should not just become a thing to be consumed but should become a way of life. our spaces are designed in such a manner that luxury is interwoven into your life and lifestyle.



nothing
compares

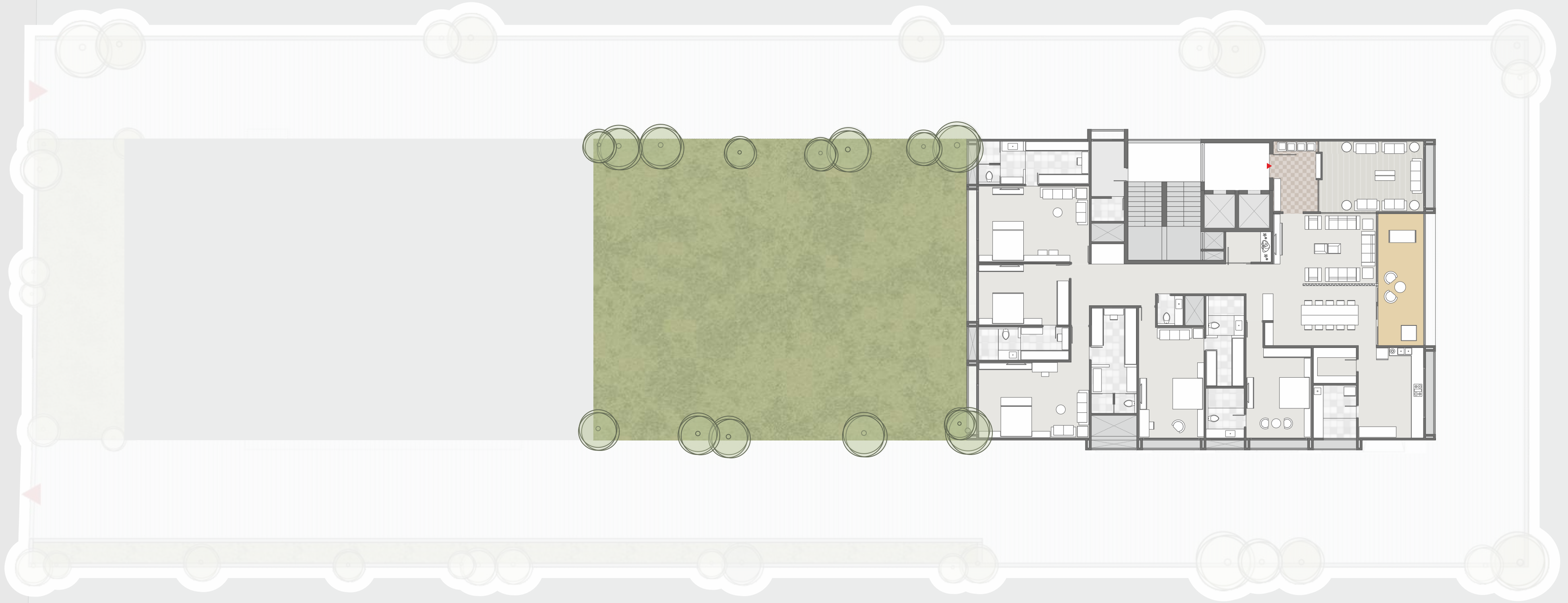
āntares

SITE PLAN

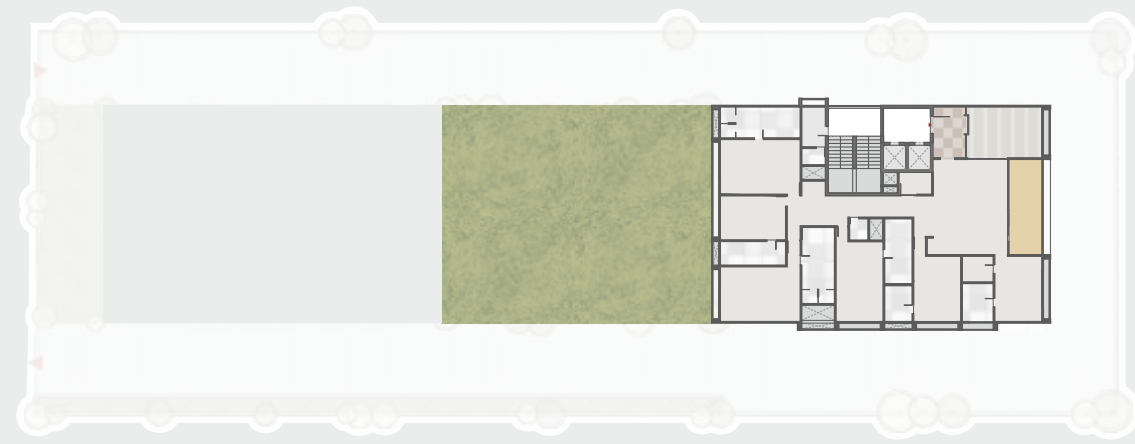


TYPICAL FLOOR PLAN

1800 MT WIDE ROAD



TYPICAL UNIT PLAN





āntares



āntares



āntares



āntares



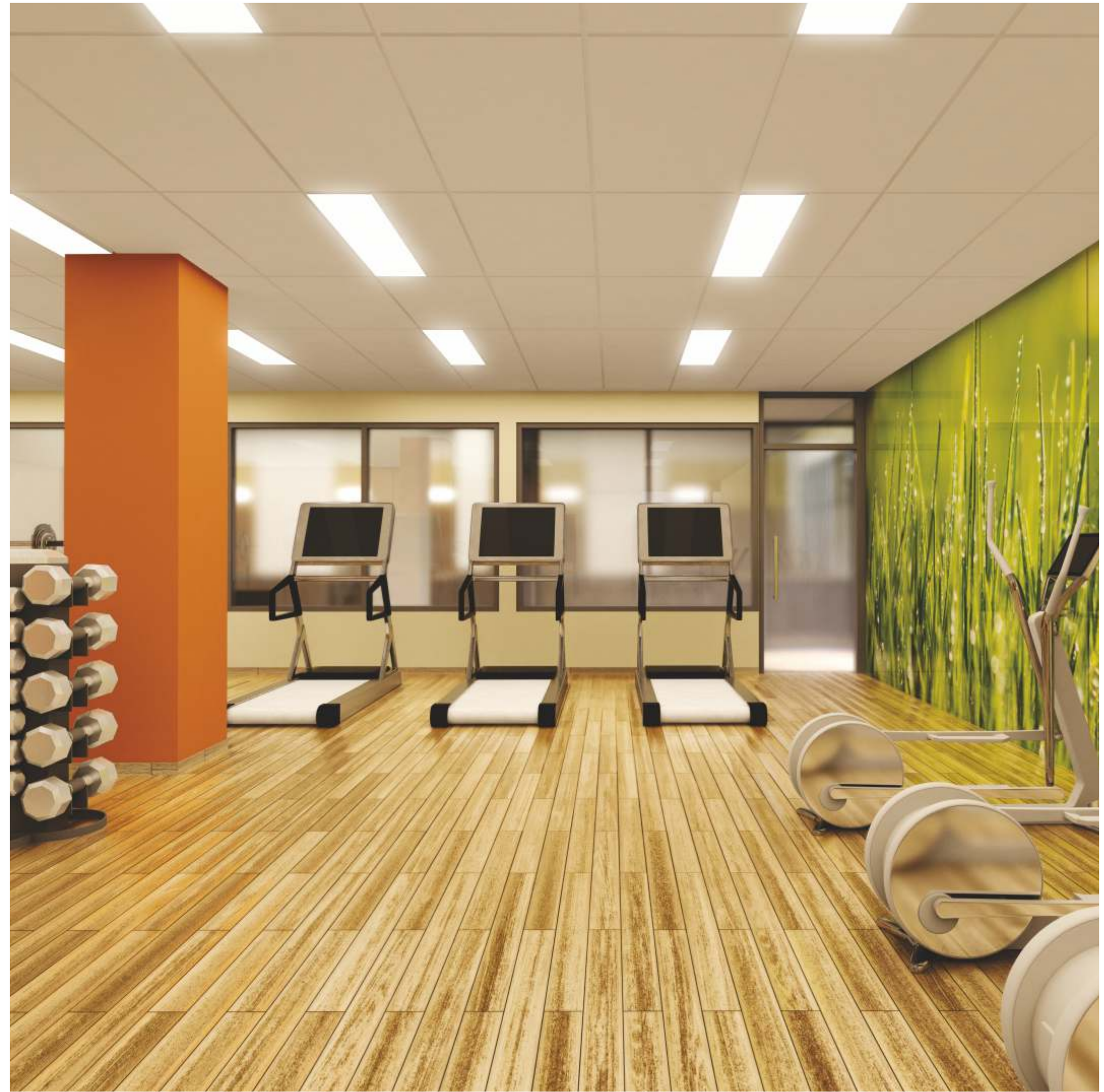
āntares



āntares



āntares



SPECIFICATIONS

DRAWING ROOM / LIVING / DINING ROOM

- Italian Marble Flooring

MASTER BEDROOM 1 & 2

- Hard Wood flooring: European, 12mm thick

ALL OTHER BEDROOMS

- Italian Marble Flooring

KITCHEN

- Branded Modular kitchen with Hob, Chimney, Microwave and Oven

STORE AND WASH AREA

- Kota stone shelves in the store room with a dado of white ceramic / glazed tiles.
- Granite stone flooring with dado of Vitrified Tiles.
- R.O. plant system, Central Gas geyser System .
- Washing Machine Provision with dry kitchen platform in wash area

VERANDA

- Deck wood or Natural granite stone flooring with soft landscape.

BATHROOMS

- Combination Of Designer Vitrified tile and Italian marble as a Floor & Dado.
- Rain shower with glass cubicle and W.C. cubicle in master bedroom.
- Hansgrohe / VNB or equivalent quality bathroom fittings.
- Duravit / TOTO or equivalent quality sanitary fittings.

WINDOWS

- Domal/Technal or equivalent quality aluminum sliding windows with DGU glass.

DOORS

- Main entrance door - 32mm thick flush door with veneer / molded skin on both sides.
- 32mm thick flush doors with matt stainless-steel handles and locks

PLUMBING WORK

- Central water softening plant.
- Central Pressure System

ELECTRICAL WORK

- Branded modular switches.
- 3-phase concealed copper wiring with adequate number of points in all rooms.
- Provisions for TV / cable / telephone points in each room.

INTERNAL AND EXTERNAL FINISHES

- All internal walls - mala plastered with putty finished.
- Double coat textured plaster
- All exterior walls will be painted with 100 % Acrylic based apex paint.

AIR CONDITIONING

- VRV/ Airconditioner concealed Units in all rooms.

AMENITIES

- Automatic elevators of Mitsubishi.
- Three layer security system with intercom facility and video door phone.
- Generator for power back-up for common services / basic light & fan for each flat.
- Provision of hassle free house-keeping through professional agency.
- Landscaped common plot and children play area.
- Broadband connection.
- DTH Connection.
- 5 Car parking space per apartment in basement
- Gymnasium and health club with every modern facility for fitness.
- Indoor recreation like T.T., card room, caroms.

THE ADVANTAGE OF BEING CLOSE

- HOSPITALS
- SCHOOLS & COLLEGES
- TO STAY
- ENTERTAINMENT
- CLUBS

