

# HASNAIN

RESIDENCY  
2 BHK APARTMENTS





AL HASAN INTERIORS P

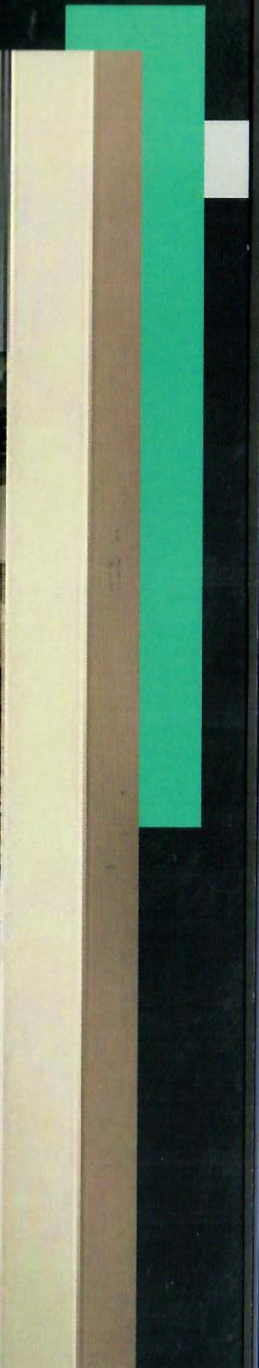
PARTNER

*Ultra - Modern living Spaces - Surround yourself with elegance*



*Signature Bedrooms - For those wonderful and restful moments*

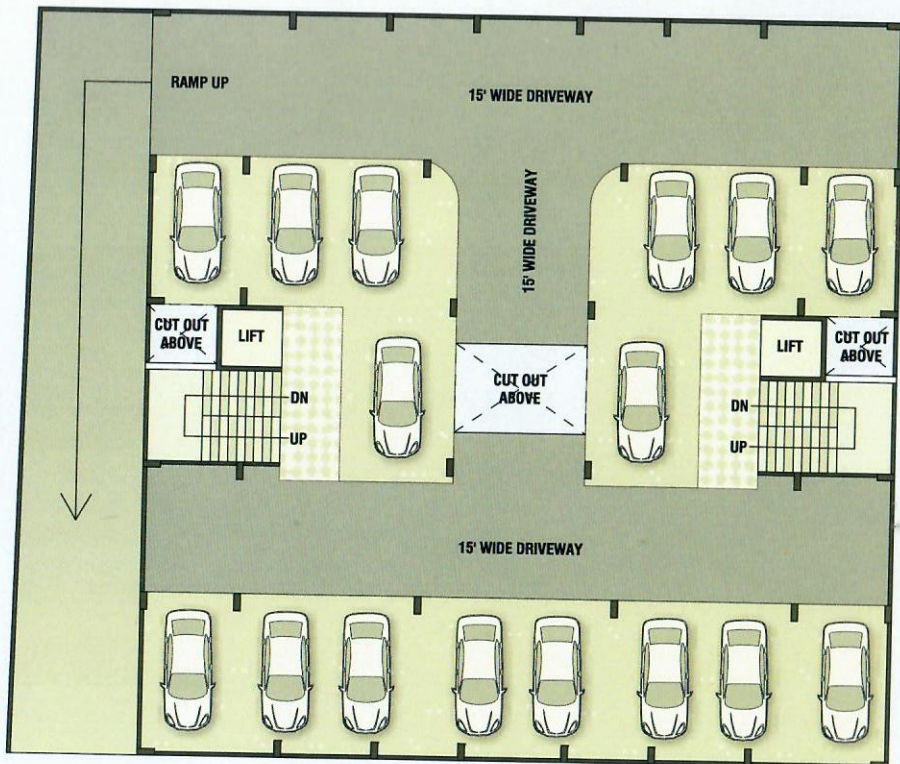
*Spacious - Modular Kitchen*

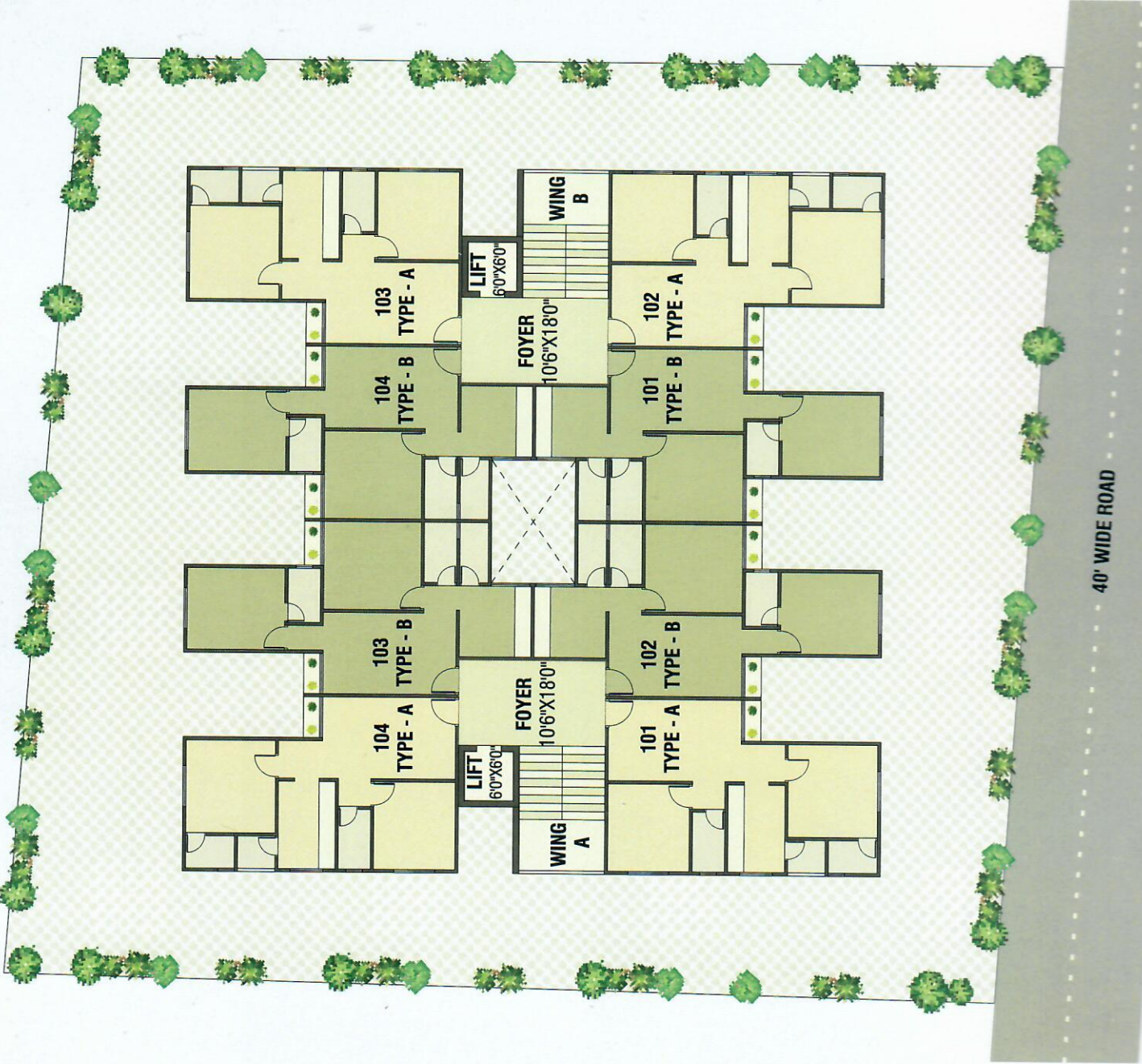


# GROUND PLAN



# BASEMENT PLAN





# HASNAIN RESIDENCY

2 BHK APARTMENTS

UNIT PLAN  
Type B



(Type B)







AL HASAN INFRASTRUKTUR

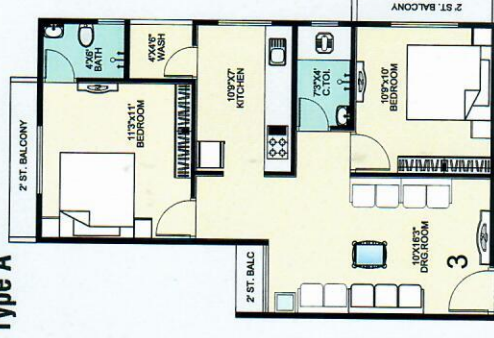
UNIT PLAN

UNIT PLAN

AL HASAN APARTMENTS SIDENY

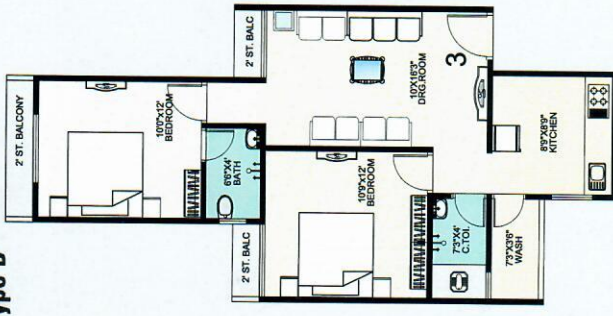
**WING B**

**Type A**



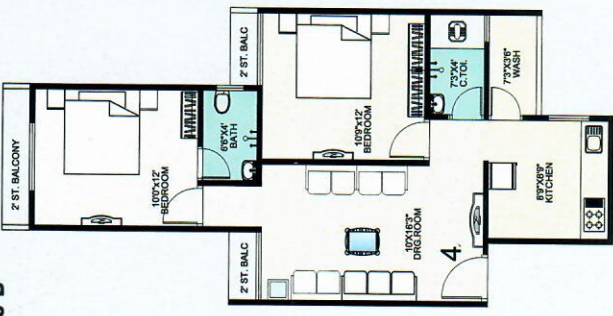
**WING B**

**Type B**



**WING A**

**Type B**



**WING A**

**Type A**



**WING B**

**WING B**

**WING A**

**WING A**





*Upgrade to better life - Indulge your love for Beauty*

## CLIENT FEATURES

**EXCLUSIVE  
GATED COMMUNITY**



**WELL PLANNED  
SITE LAYOUT**



**ELEVATORS WITH  
STAINLESS STEEL CABIN**



**HI-TECH  
SECURITY SYSTEMS**



**GRAND WELCOMING  
ENTRANCE FOYERS**



**RECHARGE BORE FOR  
WATER HARVESTING**



## SPECIFICATIONS

**FLOORING** Vitrified flooring in entire apartment.

**KITCHEN** Granite platform with S.S sink, with tiles dadoup to lintel level.

**TOILET** Full height designer bathroom tiles in toilet. Fitting - I.S.I.C fitting. Sanitary ware - Good quality.

**DOORS &  
WINDOWS** Wooden flush door with wooden frame and aluminum sliding window with stone jams.

**UTILITIES** Single Phase concealed copper wiring with modular switchgear & M.C.B and E.L.C.B. in flats.

**FINISHES**  
Internal : Mala plaster with white cement based putty finish  
External : double coat sand face plaster with acrylic paint

**WATER  
SUPPLY** Common tube well with underground water tank and overhead water tank for 24 hours water supply.

## KEY PLAN



## NA NOC Plan Pass Titil Clear Loan Paper available

### Site Address

Hasnain Residency, F.P No. 15/2,  
Beside Ambar Residency - 2,  
Sarkhej, Ahmedabad.

### Contact

+91 7069697951  
+91 7069697952  
+91 7069697953

### Developers

Al-Hasan Infra Space LLP

### Architects



**S.M.ARCHITECTS**

Ar.samir multani

+91-9825268635

[www.smaarchitects.in](http://www.smaarchitects.in)

### Structure

Vaidya Associates  
Ahmedabad

### Design by

Conceptual Design

### Legal Notes

- Stamp duty, registration charges, legal documentation, to maintenance charges & deposit, A NI C charges, torrent electrical charges including cable and sub-station cost and any other charges shall be borne by the purchaser

- G S T , any additional charges taxes, cess or duties etc levied by the government/local authorities prior, during or after the completion of the scheme will be borne by the purchaser.

- In the interest of the continual developments in design and quality of construction, the developer reserves all rights to make any changes in the scheme, including technical specifications, designs, planning and layout in any stage and all the purchasers shall abide by such changes

- Changes/alteration of any nature, including the elevations, exterior colour scheme of the apartments or any other changes affecting the overall design concept & outlook of the scheme are strictly not permitted during or after the completion of the scheme.

- If booking is cancelled, Refund will be given after booking of the same unit.

- The brochure is intended only to convey the essential design and technical features of the scheme and shall not be construed to form part of the legal document.