

# AARYAN | HEIGHTS

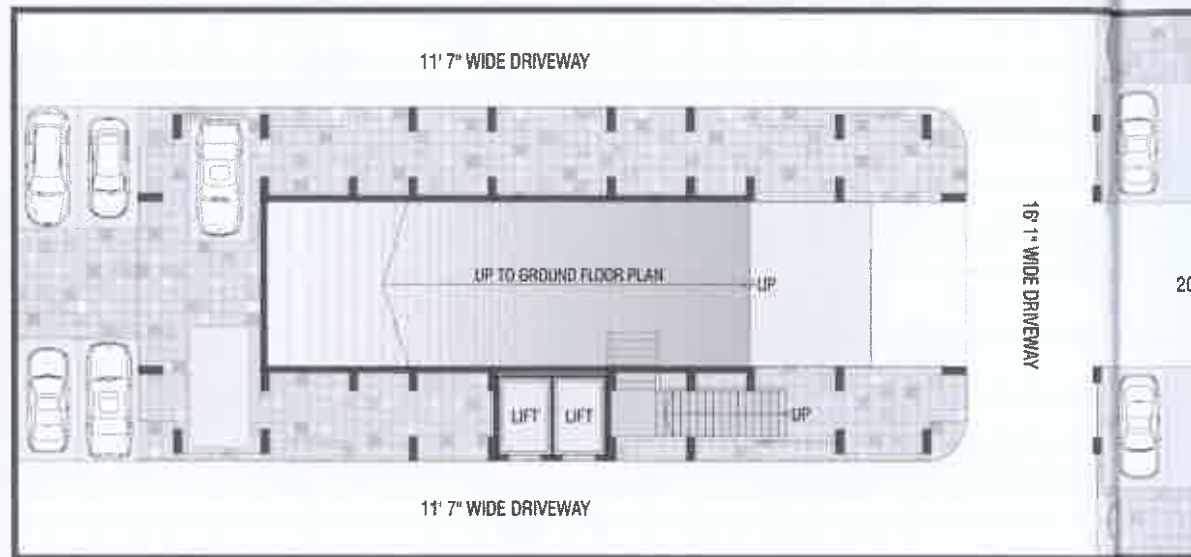
3 BHK DREAM HOMES

# AARYAN | HEIGHTS

3 BHK DREAM HOMES

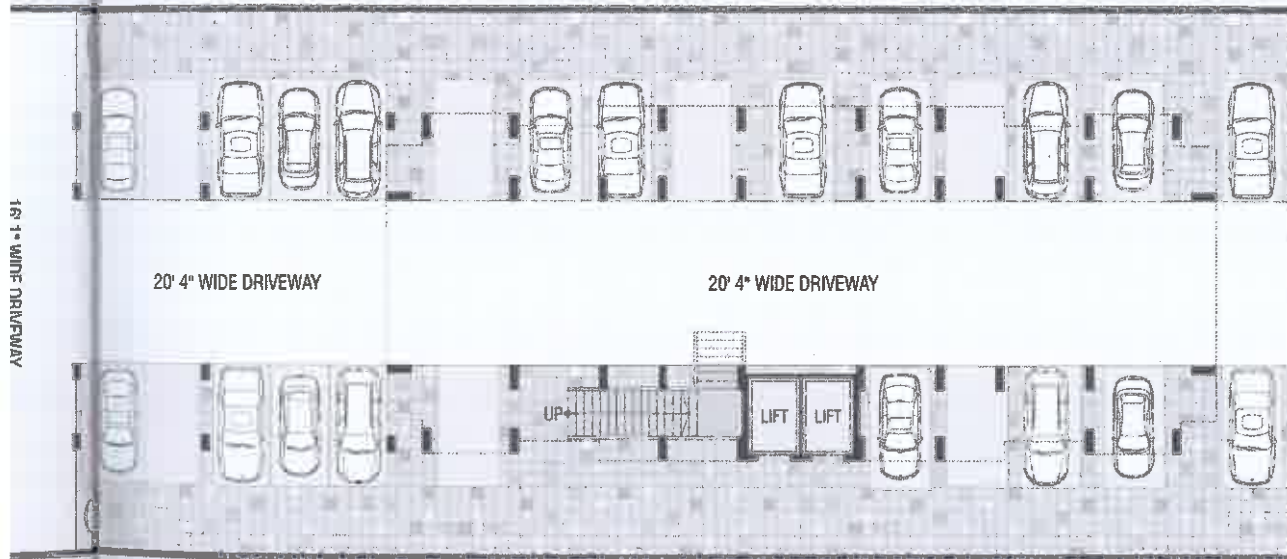


# BASEMENT PLAN



# AARYAN HEIGHTS

3 BHK DREAM HOMES

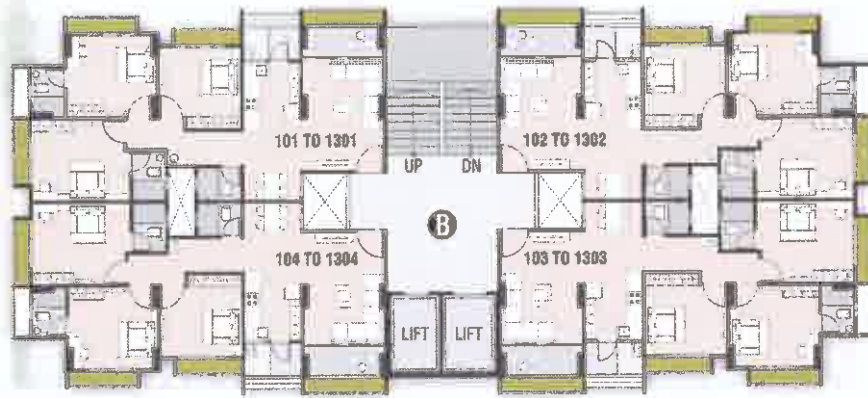


TYPICAL PLAN



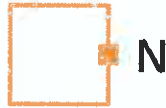
# AARYAN HEIGHTS

3 BHK DREAM HOMES



# 3 BHK UNIT PLAN

1ST TO 13TH FLOOR



BLOCK - A & B



# 3 BHK UNIT PLAN



14TH FLOOR

BLOCK - A & B





## SPECIFICATIONS



### STRUCTURE

*Sand Blasted*

- RCC frame structure with ~~brick~~ walls.



### FLOORING

- Vitrified tiles in living, dining and all other area.



### PLASTER/FINISHED

- Internal Wall: Single mala plaster with putty (Ready to paint).
- External Wall: Double coat sand face plaster with 100% acrylic water proof paint finished.



### DOOR / WINDOWS

- Both side laminated flush door with wooden frame.
- Aluminum sliding windows with natural stone windows trims.



### KITCHEN

- Mirror polished granite platform with S.S. Sink Tiles dado up to lintel level.
- Provision for exhaust fan.



### TOILETS & FITTINGS

- European type W/C pan in each toilet. Jaquar / Lauret / American standard or equivalent UPVC plumbing.
- Rigid PVC pipes for drainage & plumbing.



### ELECTRIFICATION

- 3 Phase power supply.
- Modular switches, copper wiring and safety switch gear.

**Disclaimer** • The developers reserve the rights to change or revise the scheme or any details there of Government levies like stamp duty, registration charges & other legal expenses like AUDA, GEB Charges, GST etc. are to be borne by the members. • This brochure is not to be treated as part of the legal document. It is only for easy display and understanding of the project. • Only internal changes shall be allowed with prior permission & shall be charged extra in advance. • The sizes mentioned in the unit plan may vary slightly in actual.

# LOCATION MAP



## AARYAN HEIGHTS

3 BHK DREAM HOMES

Site : Sindhu Bhavan Road Ext. Nr. Shilaj Flyover,  
S. P. Ring Road, Shilaj, Ahmedabad - 380058



Reg. Office: B/103, Titanium Square  
Thaltej Cross Road, S.G. Highway, Ahmedabad  
Tel: **079 -2970 2629**

Contact: **99250 16810, 98251 49089**  
Web.: [www.aaryanprojects.in](http://www.aaryanprojects.in)

Designed by:  
Neha Consultant

Structure:  
Setu Infrastructure

RERA Reg. No.: