



UPSCALE YOUR BUSINESS

Developer

**DEVAL SADHNA**  
BUILDCON



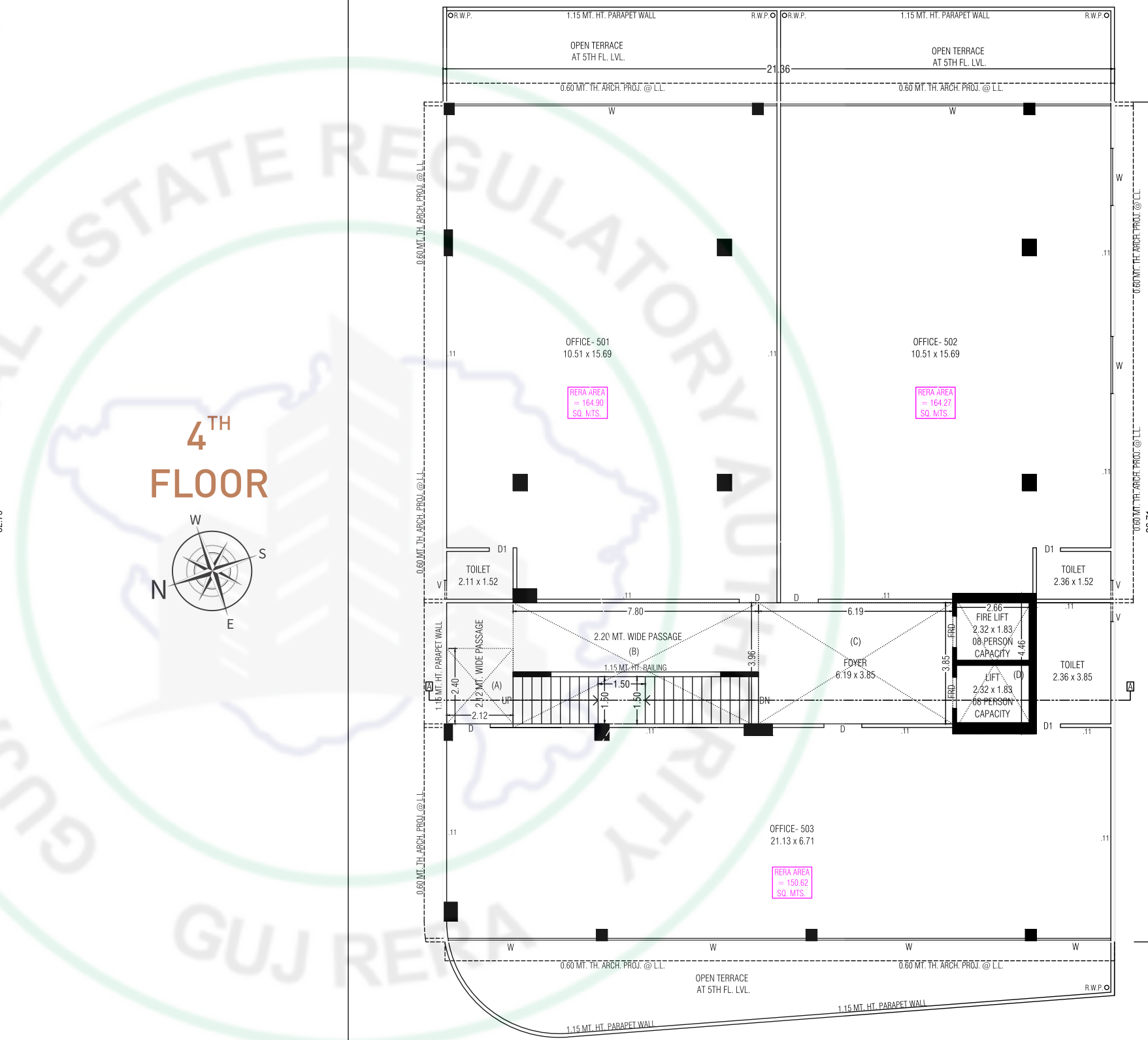
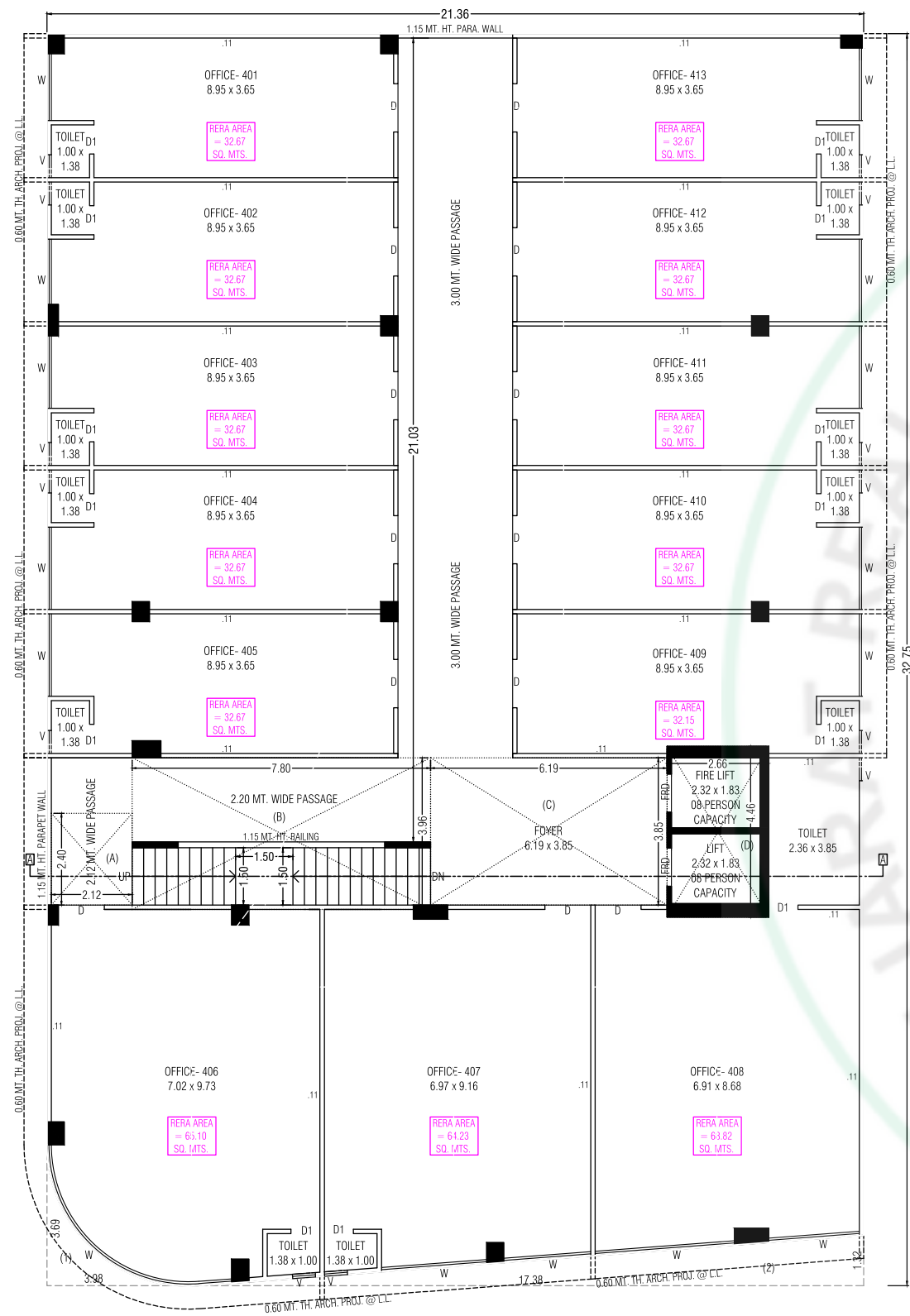


# LOCATION THAT PRESENTS ADVANTAGE TO YOUR BUSINESS

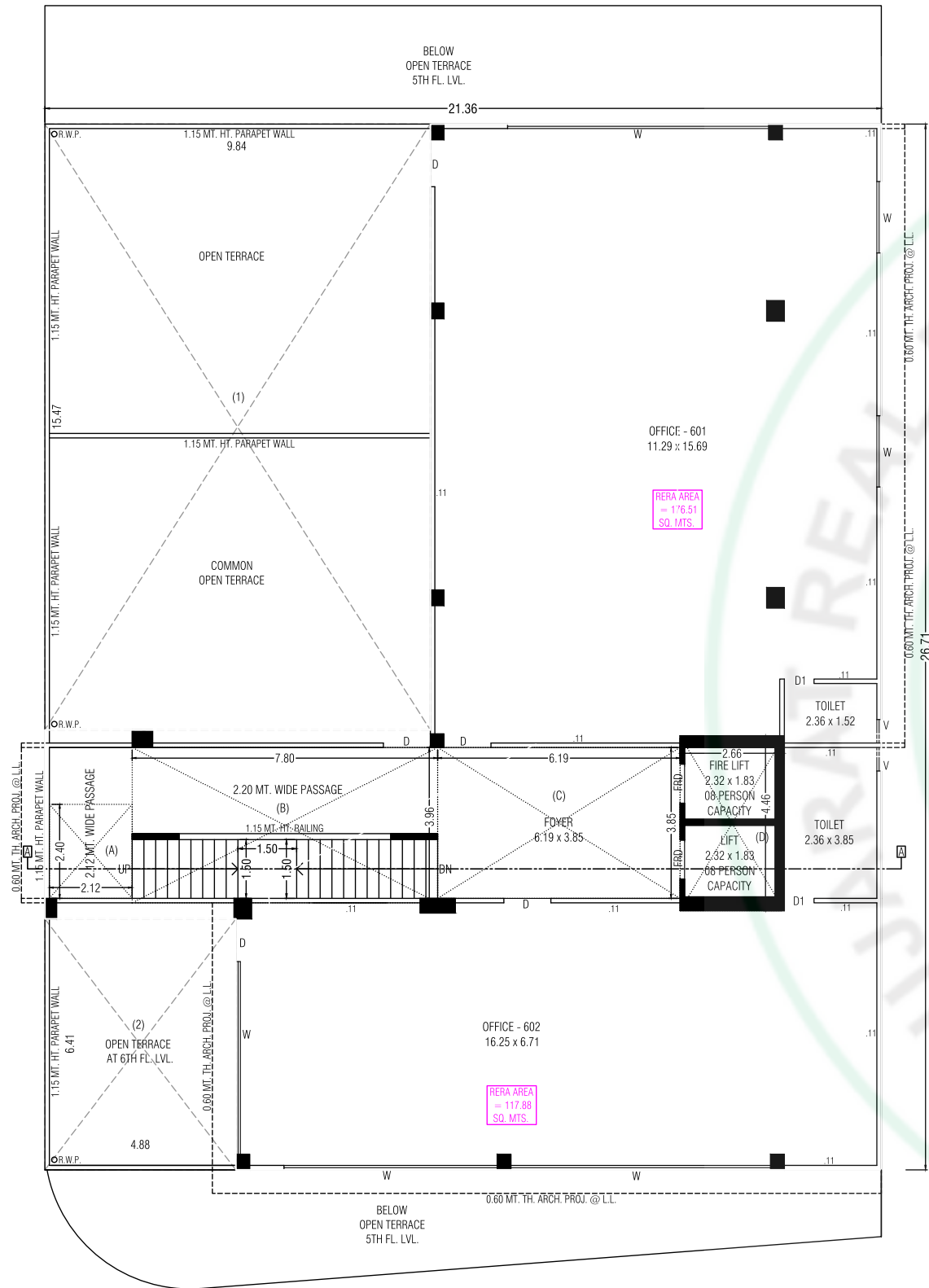
In the world of business location is the key factor for success. That's why Vedant Sky walk is strategically located at the most prime and prestigious area of Ahmedabad.











# 6<sup>TH</sup> FLOOR





# SPECIFICATION



## FLOORING

Vitrified tiles in offices and mat finish vitrified tiles flooring in shops.



## WALLS

All internal walls will be finished with putty over mala plaster. All external walls will be finished with double coat sand-face plaster/texture with acrylic paints. Earthquake resistant RCC frame structure with light weight block masonry wall.



## WINDOWS

All windows will be fully glazed aluminum sliding with stone revile.



## ELECTRIFICATION

Concealed copper flexible wiring with adequate number of electric points & decorative modern modular switches, Centralized distribution board with MCBS for safety & protection.



## PLUMBING

Concealed plumbing with standard pipe fitting and premium CP fitting. Common underground water tank and overhead water tank for continuous water supply.



## TOILET

Elegantly designed toilets with tiles up to lintel level, with sanitary wares.

### NOTES :

• This brochure is not as legal part of document but only for easy understanding to customer • Irregular payment cause for cancellation of the booking • All rights are reserved by developers to make any changes in plan, scheme elevation, dimension and other details there in to comply with statutory regulation shall be binding to all the members • Subject to Ahmedabad Jurisdiction



Site Address  
Nr. Vishwas City 6, Opp. Anutham,  
Gota Jagatpur Road, Gota, Ahmedabad.

Contact  
**+91 900 900 54 56**

SCAN FOR LOCATION



Rera No. ....

Website : .....

Project by  
**VEDANT**  
GROUPS OF COMPANY  
<http://www.vedantgroups.com>



Developer  
**DEVAL SADHNA**  
BUILDCON

Architect  
**CREATIVE ASSOCIATES**  
AR. RAKESH PRAJAPATI  
M.: +91 9275 056078

Structurer  
**MARUTI**  
CONSULTANTS



Contact  
**+91 900 900 54 56**