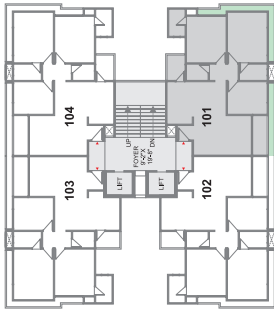


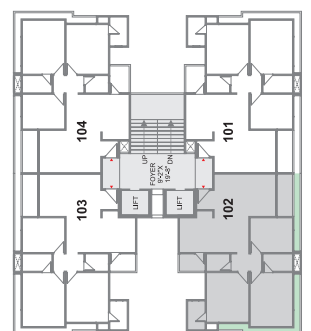


MERRIMENT
PARMESHWAR

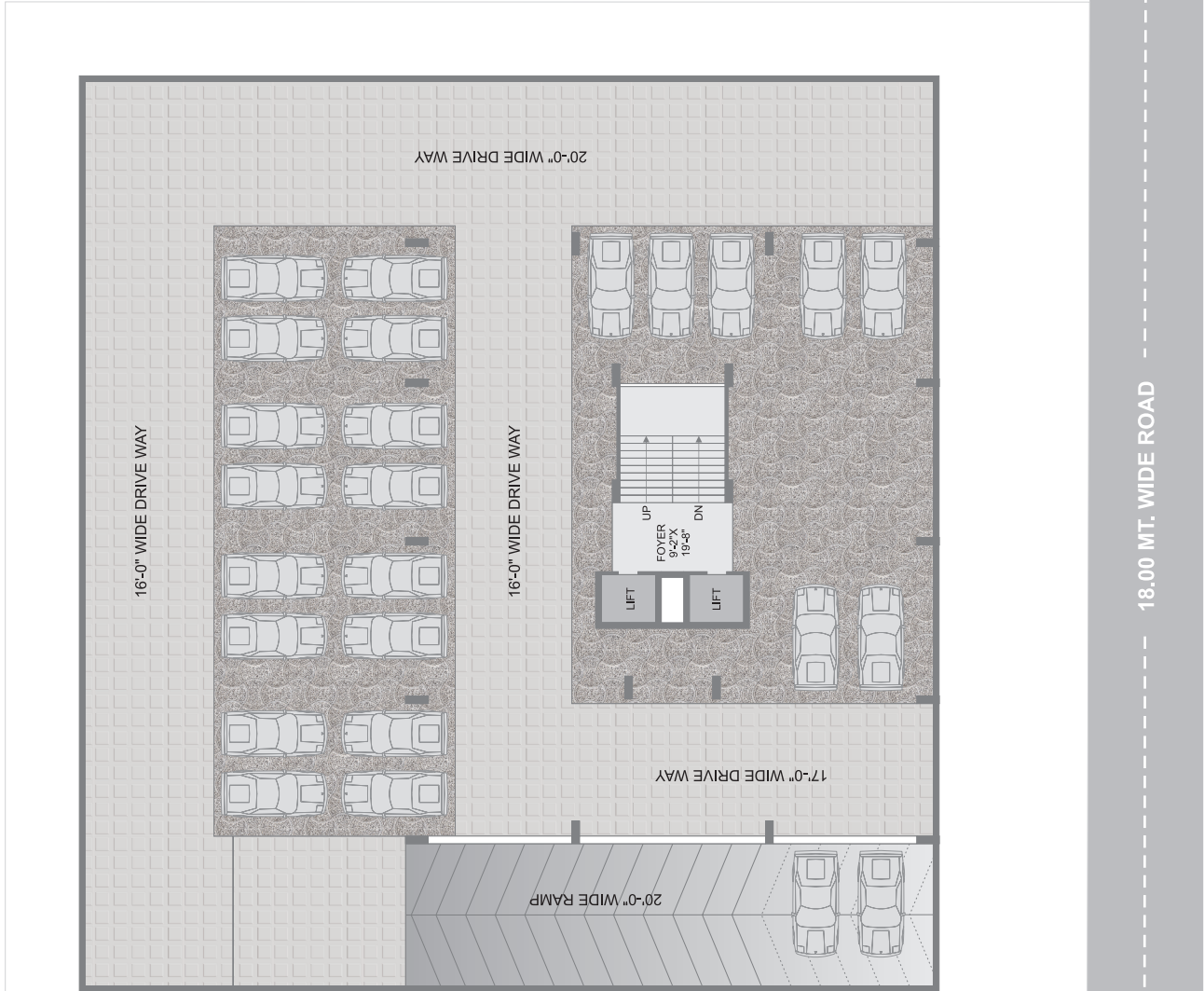
UNIT - 1 (101, 104)



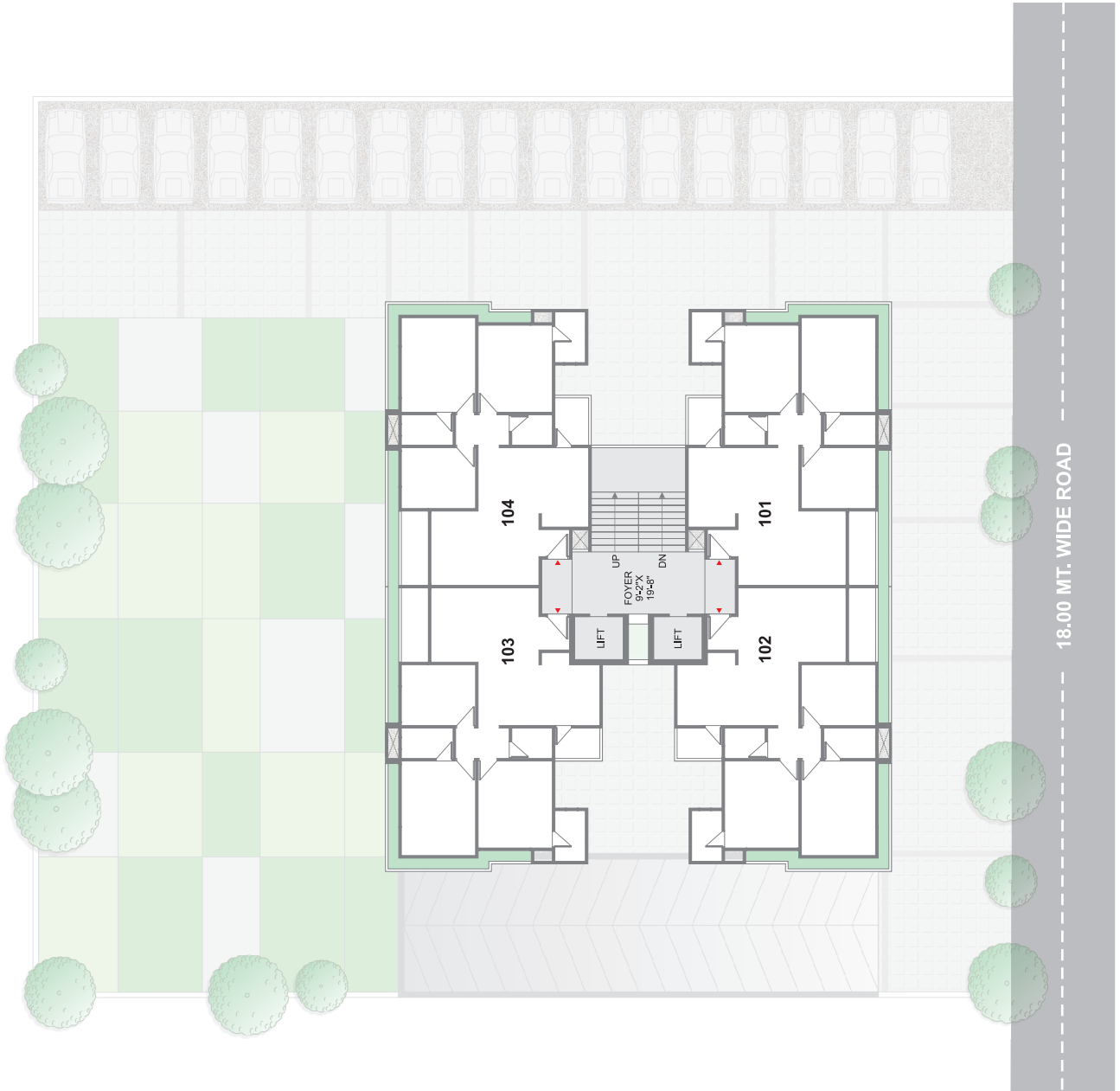
UNIT - 2 (102, 103)



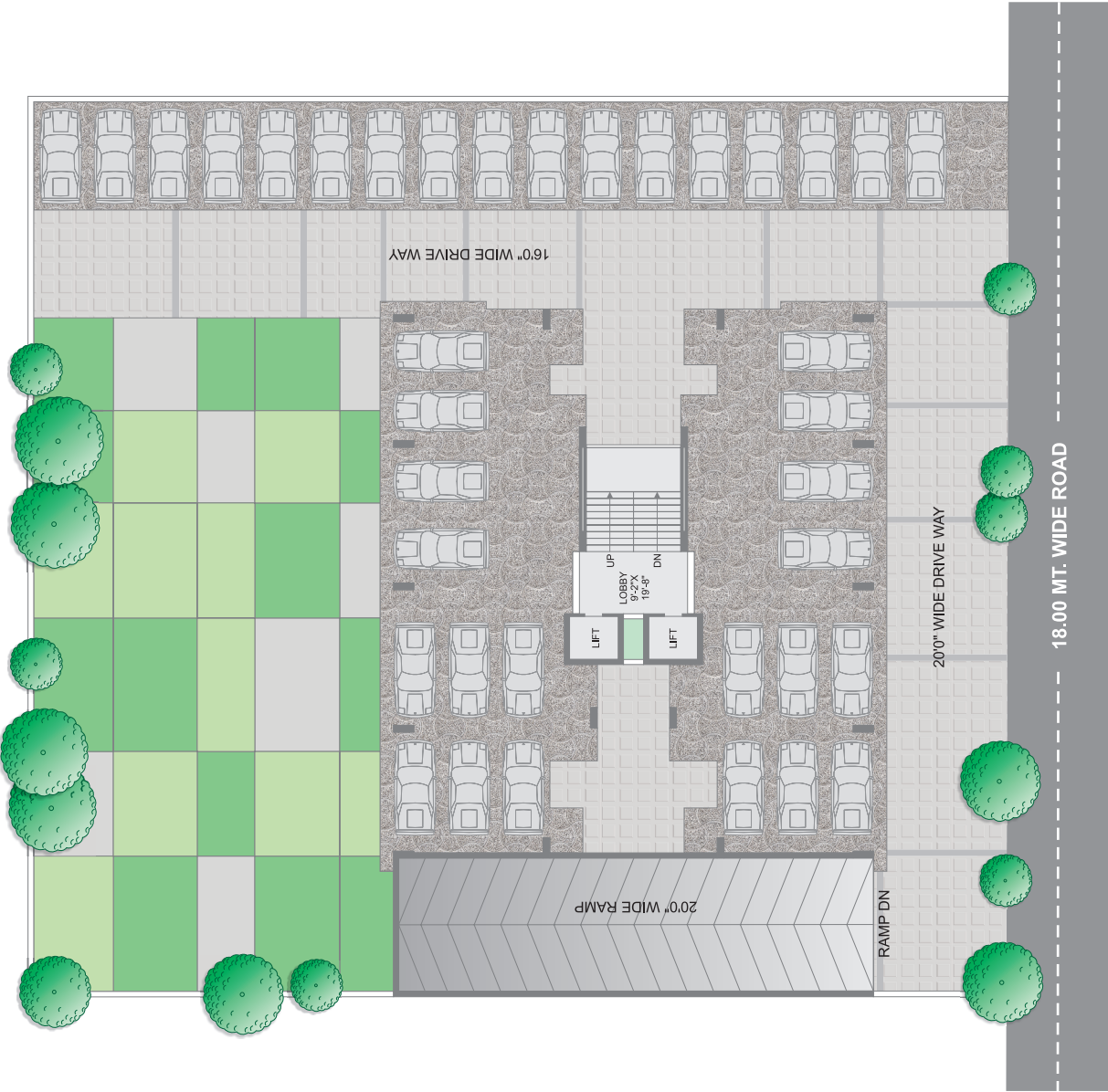
BASEMENT



TYPICAL FLOOR



GROUND FLOOR



SPECIFICATIONS

Foyer	Ultra modern entrance foyer Best quality flooring Vitrified flooring
Kitchen	Granite platform with ss sink having drain board designer digital tiles up to lintel level designer wash basin in common area
Doors	Decorative main door designer laminate along with handle and safety lock wooden door
Windows	Anodized aluminum section Full size windows in living room and three bedroom for air ventilation
Road	RCC road for internal campus
Terrace	Double coat fully water proofing with china mosaic
Enamel	Acrylic water proof point on external wall Acrylic color in common areas Well refined putty on internal walls
Electrification	Modular switches & concealed circuit wiring Sufficient electric points in all rooms MCB in individual flit for safety High ampere special electric point for freeze, oven, mixer, RO plant, floor mill, washing machine, TV & telephone
Plumbing	Concealed modern plumbing system ISI brand CPVC & UPVC plumbing & dainage piping jaguar fitting by excellent series

LIFESTYLE AMENITIES

- Indoor Games
- Children Play Area
- Gymnasium
- Grand Foyer
- Yoga Space
- One Allotted Car Parking
- Elegant Entrance Gate
- CCTV Camera
- 24 x 7 Security
- Landscape Garden
- 24 x 7 Water Supply

CENTER OF EVERYTHING

	BRTS Bus Stop.....	300 Mtr.
	S.P. Ring Road.....	500 Mtr.
	Divine Child Int. School	1.5 Km
	Metro Station.....	2 Km
	Mall & Multiplex	2 Km
	Nirma University	500 Mtr.
	Sabarmati River Front.....	4 Km
	Sabarmati Railway Station.....	4 Km
	Adalaj Tri Mandir.....	7.0 Km
	Gift City, Gandhinagar.....	8.0 Km



MERRIMENT PARMESHWAR

Site: Merriment Parmeshwar 9/1, Jay Visat Road,
B/h Nar Narayan Society, Opp. Swad Gathiya Rath,
Chandkheda, AhmedabadBad-382424

+91 9925393417 | parthinfra3325@gmail.com



Developers : **PARTH INFRA**