

Arishtanemi



FOR EVERY **DREAM**. FOR EVERY **IDEA**. FOR EVERY **PERSON**.

Arishtanemi Nexus



COMMERCIAL & RETAIL
COMMERCE. CULTURE. CONNECTION

About us



Architecting dynamic business ecosystems where ingenuity flourishes, synergistic partnerships ignite, and thriving communities take root. Our sustainable, collaborative spaces transcend mere architecture, becoming catalysts for innovation and empowering businesses to reach unprecedented heights.

The '**BUILD**' Ideology

- B**oldness - Welcoming challenges with courage
- U**nity - Enabling teamwork towards shared goals
- I**ntegrity - Upholding the highest ethical standards
- L**eadership - Inspiring others through vision & action
- D**rive - Relentlessly pursuing excellence



Combining

CONVENIENCE & COMMUNITY

Smart-Sized **RETAIL SPACES** to stay in the **SPOTLIGHT**

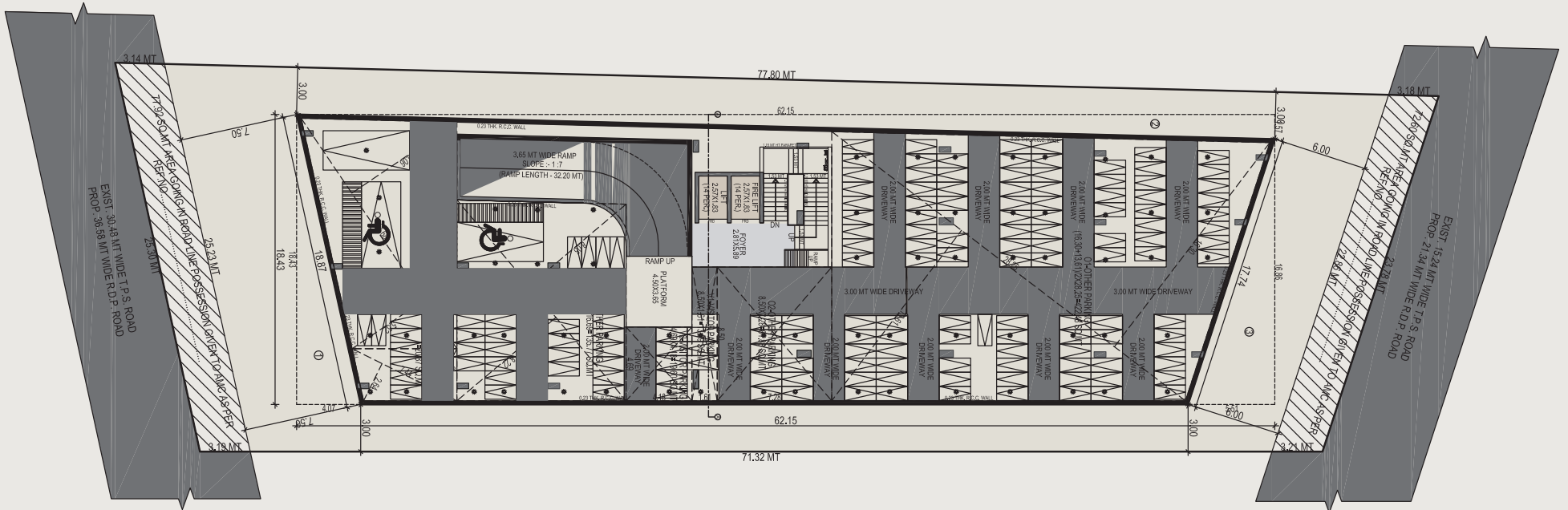
Growing retail fronts require more than just space they need the ideal environment to elevate both their brand image and scalability. Arishtanemi Nexus's smartly designed retail spaces not only boost your visibility among consumers but also enhance your retail value proposition.



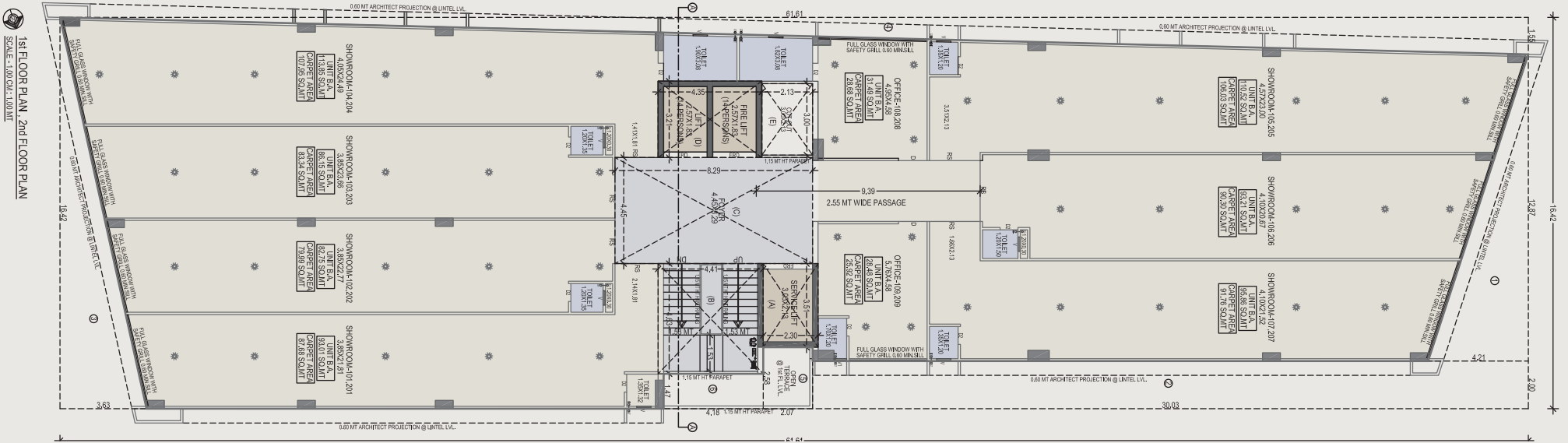
BASEMENT 2 PLAN



BASEMENT 2
SCALE: 1:100 CM: 2:00 MT



1ST AND 2ND FLOOR PLAN



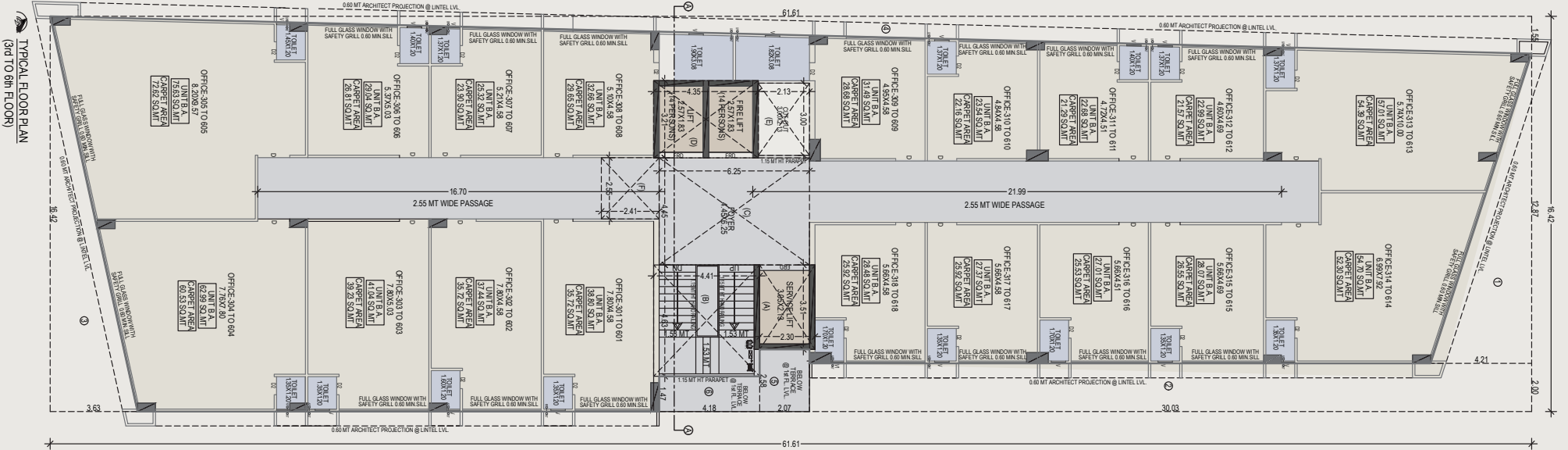
1STFLOOR PLAN, 2NDFLOOR PLAN
SCALE: 1:100 (D.I.) = 1:100 (M.T.)

For **COMMERCIALS** that think big' **HERE'S SPACE** **TO MATCH.**

Arishtanemi Nexus embodies 21st-century workspace flexibility with its multi-level, expansive floor plates, ideal for collaborative and adaptable corporate layouts. These customizable spaces create a strong sense of community, encouraging the exchange of ideas and fresh concepts. By eliminating physical barriers, businesses enjoy greater agility and can easily adapt their spaces to reflect evolving needs and brand ethos through innovative interior design and unique floor treatments.

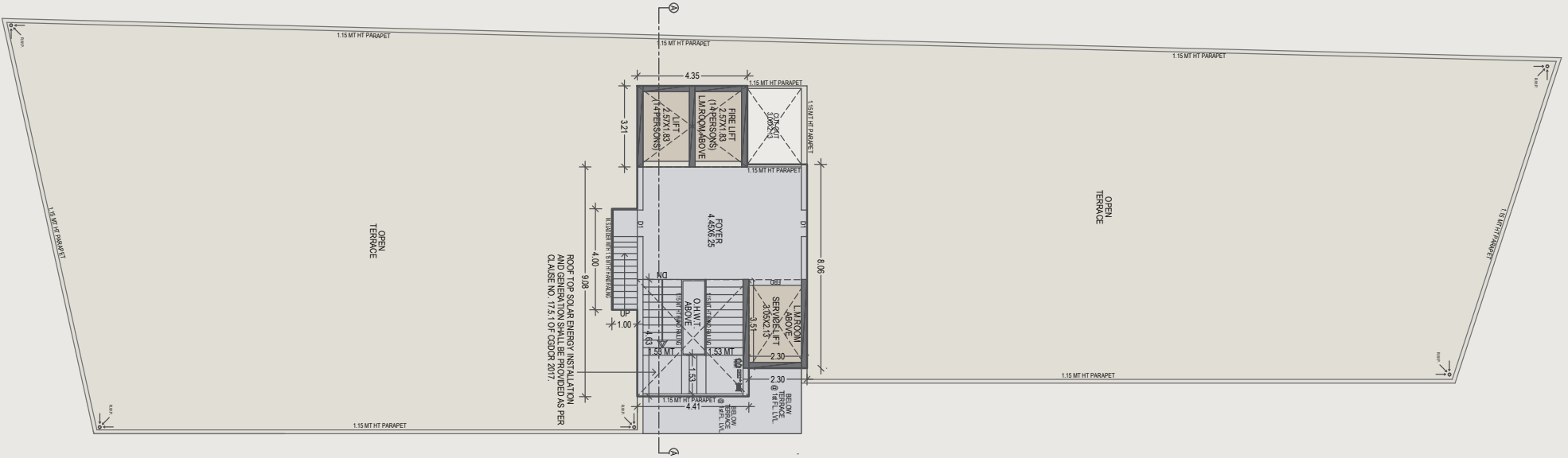


TYPICAL 3RD TO 6TH FLOOR PLAN



TYPICAL FLOOR PLAN
(3RD TO 6TH FLOOR)

TERRACE FLOOR PLAN



OPEN TERRACE PLAN WITH STAIR CABIN, L.M.R. & O.H.W.T.

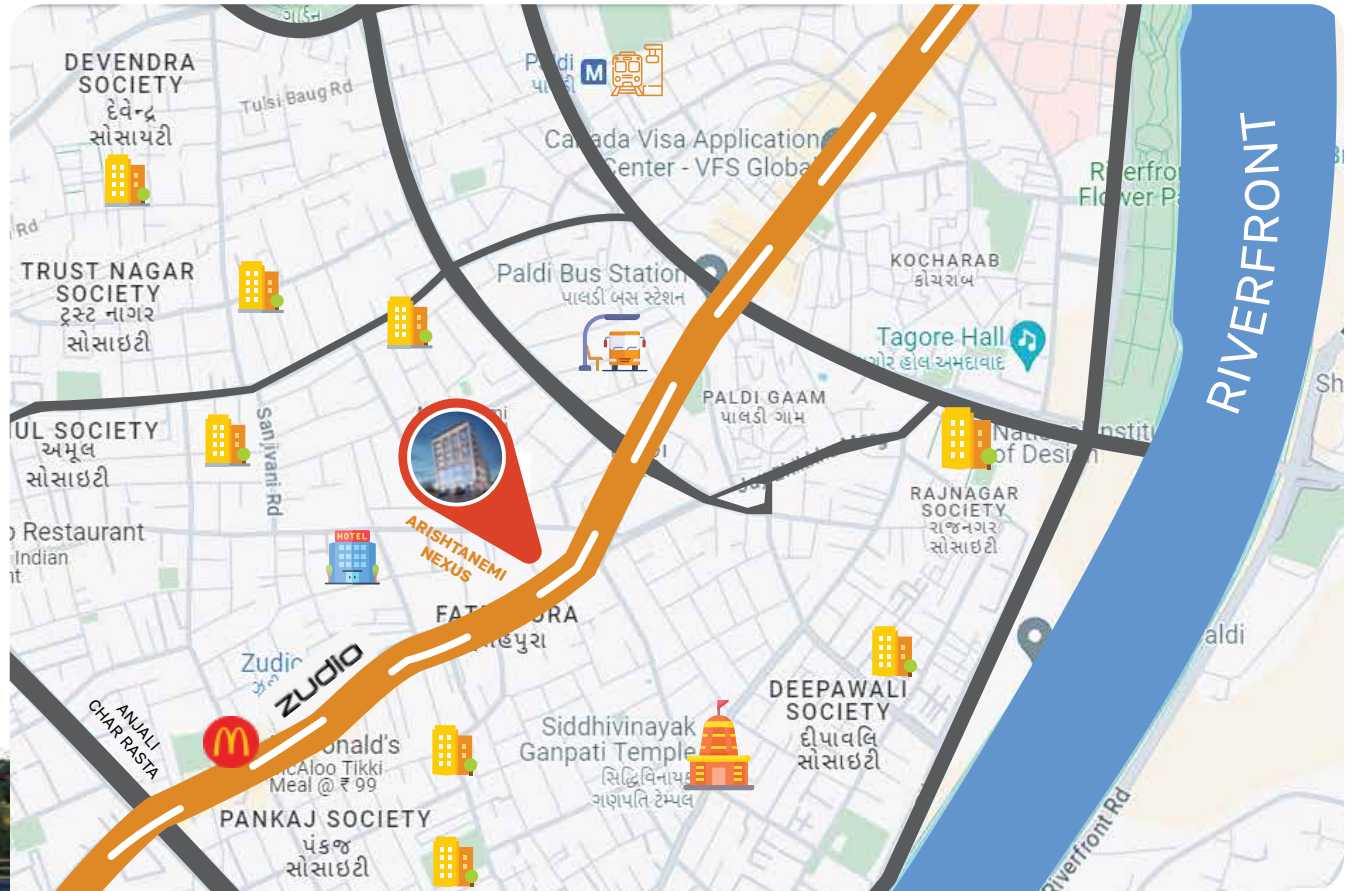
Location



Residential

Hotel

Temple



Nestled in the heart of Ahmedabad's commercial hub on Mahalaxmi Five Road, near Seva Kunj junction, Arishtanemi Nexus boasts unparalleled connectivity. Step out your door and find yourself moments from bus stops, metro stations, and vibrant businesses. This prime location ensures effortless commutes for both you and your clients, while placing you at the center of the city's dynamic pulse. Here, seamless connections extend beyond the building, it lets your business thrive in a truly interconnected environment.

Features



Prime location



Enormous 15 feet ceiling height



Vicinity to bus station



Rooftop cafeteria



Attractive entrance foyer



Entrance / Exit ramp



2 high-speed automatic lifts



2 level basement car parking



CCTV secured



Spacious offices

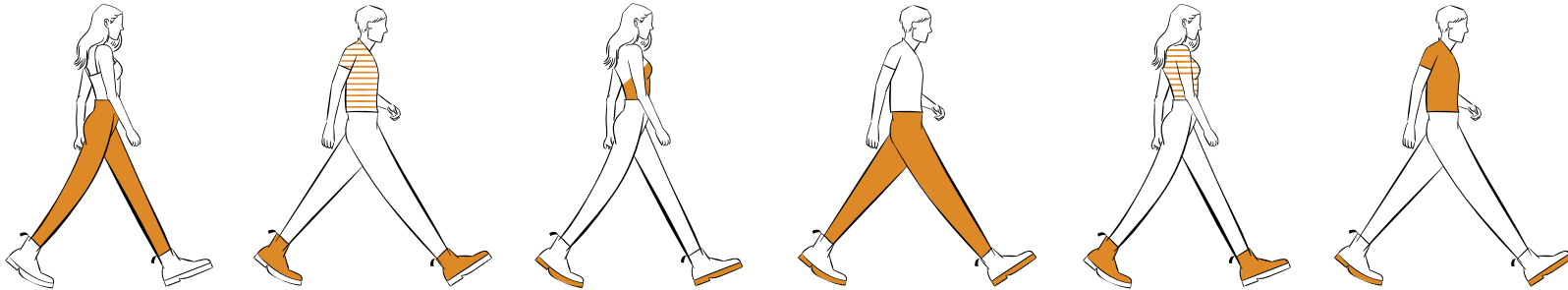


Stretcher lift



HI-END fire safety system

Arishtanemi Nexus



+91 9879 729 888 arishtanemiinfra@gmail.com




www.arishtanemiinfra.com

Regi. Office: 405-406 Santorini Square, B/h Abhishree Complex, Jodhpur Cross Road, Satellite, Ahmedabad, Gujarat - 380015

Site Address: Arishtanemi Nexus, Opp. Badshah Dairy, Mahalaxmi 5 Road, Paldi, Ahmedabad, Gujarat - 380007

Scan for Location



<p>Developer</p>  <p>+91 9879 729 888</p>	<p>Architect</p>  <p>+91 9925 326 816</p>	<p>Structural consultant</p>  <p>+91 9909 288 947</p>	<p>Mep consultant</p>  <p>02717 472 021</p>
--	--	--	--

Disclaimer

Specifications and amenities mentioned in this brochure and promotional documents are only representational and informative and are subject to modification/compliance required as per the RERA Act. Plans, Specifications and Features are subject to change without prior notice. This brochure is just for an easy presentation of the project and should not be treated as a legal document. The entire dimensions given are approximate and unfinished. Subject to Ahmedabad jurisdiction. Payments are to be made in favour of "Arishtanemi Infra LLP"