

**AAKAR LOTUS**  
**A T SANAND**

Developed By

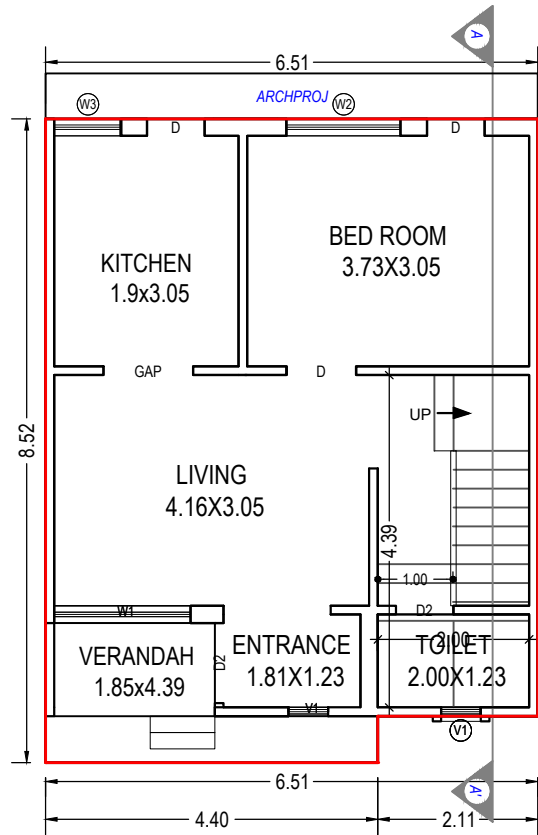
**Aakar Infra**

Contact Us

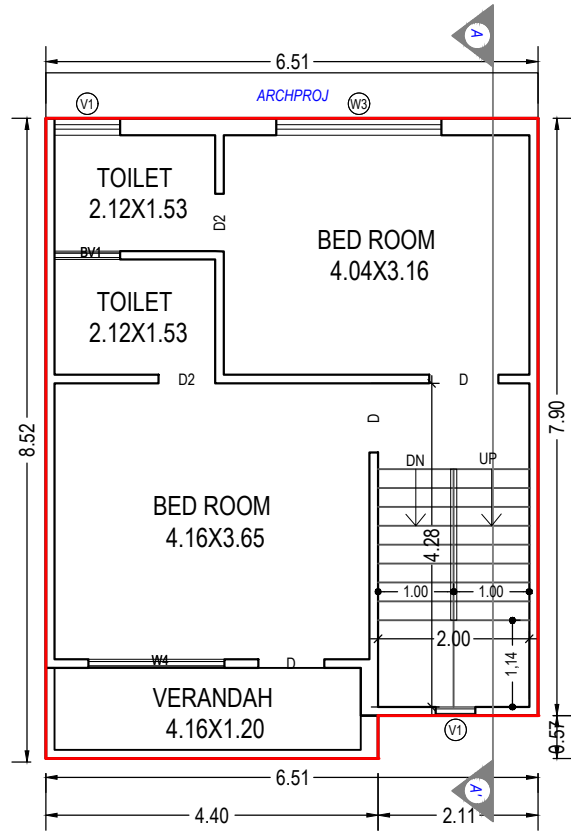
**Mo No. 9909941303**

**Email. [aakarhomes18@gmail.com](mailto:aakarhomes18@gmail.com)**

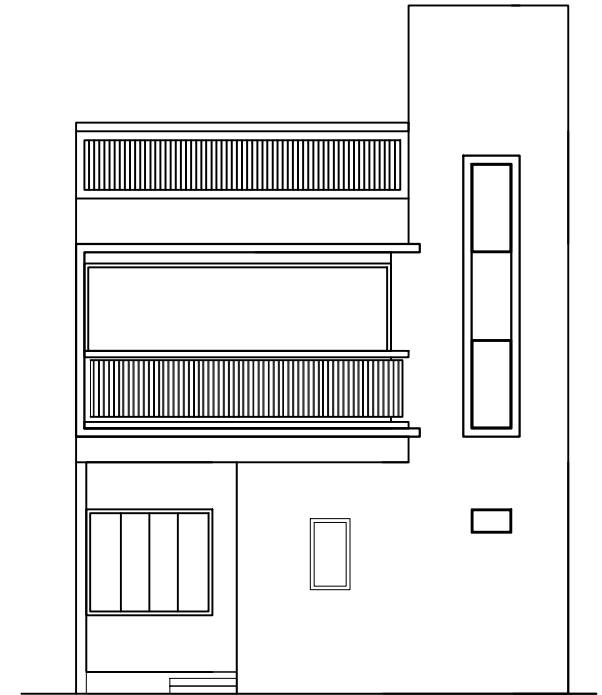




GROUND FLOOR PLAN

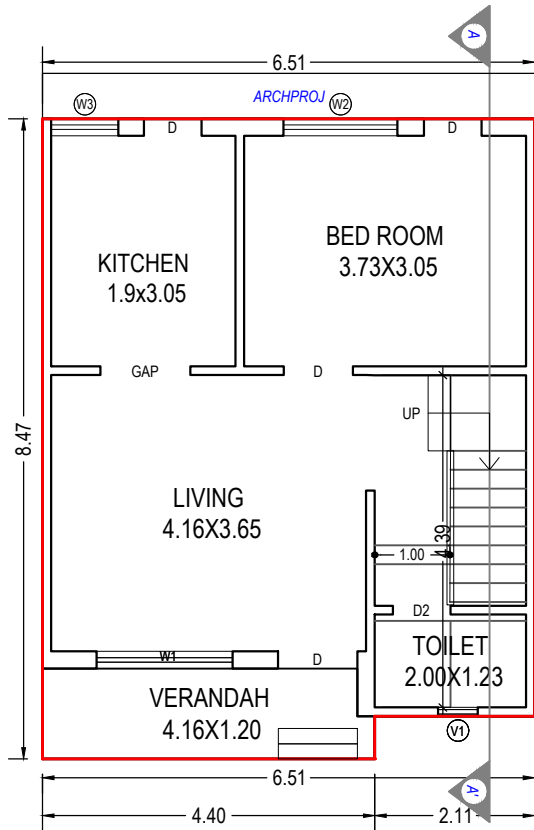


FIRST FLOOR PLAN

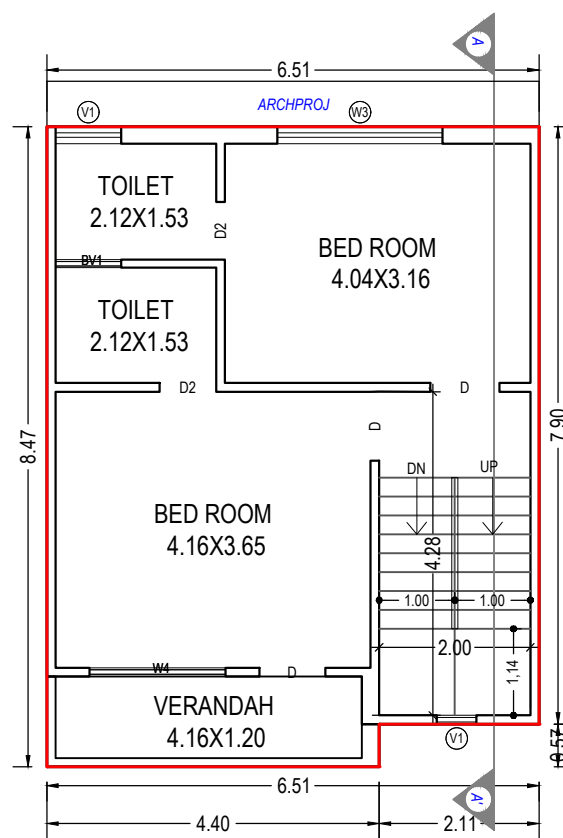


ELEVATION

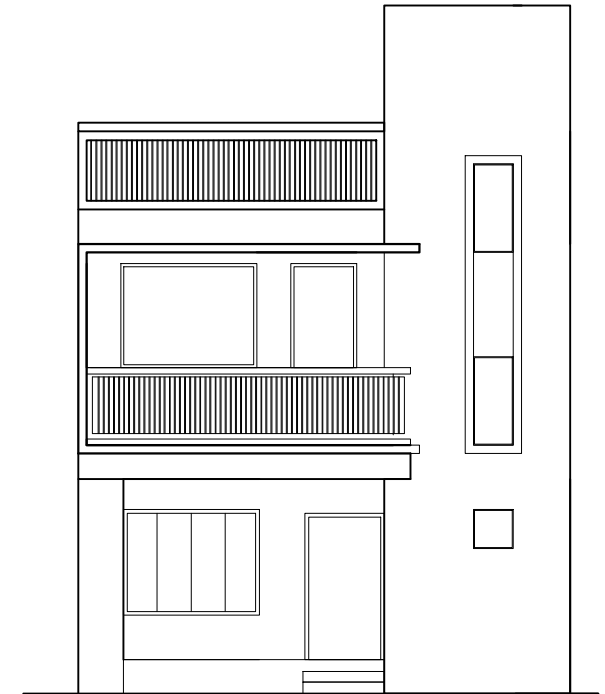
Block A (Unit No. 1 to 7)



GROUND FLOOR PLAN



FIRST FLOOR PLAN



ELEVATION

Block B (Unit No. 8 to 14)

## Specification

### Structure

Earthquake resistant load bearing structure.

### Flooring

Good quality double charged vitrified tiles in entire Unit.

### Kitchen

Granite top platform with S.S.Sink Glazed tiles dado up to lintel level.

### Wall Finish

Internal single coat mala plaster with putty finish.

External double coat mala plaster with texture.

### Doors & Windows

Main door with wooden frame.

All other doors are flush door with wooden frame with good quality fittings.

Anodized aluminum sliding Glass window with granite seal.

### Electrification

Concealed copper wiring with modular switches & sufficient number of points with MCB distribution panel.

### Toilet & Plumbing

Glazed tiles up to lintel level.

Good quality bath fitting & sanitary wares.

## Location



### Project Address

Aakar Lotus, S.No. 654/1, Near Radhe Shyam Society,  
Opp Aangan Bunglows, Sanand, Ahmedabad – 382110

Developed By

Aakar Infra

Structure Design By

Dimpi Mistri

Architect

Rushi Ashvinbhai Gajjar