



BLU ALTEZZA  
THE PINNACLE OF LUXURY

**2** TOWERS  
WITH LUXURY  
LIFESTYLE

**14** SKY  
TOUCH  
STOREY

**3** BHK  
SPACIOUS  
APARTMENT

**3** FLATS  
ON EACH  
FLOOR



The background of the entire image is a light-colored, marbled pattern with veins of grey and brown. A white rectangular box with a thin brown border is positioned on the right side of the image, containing text.

**INTRODUCING**  
SURAT'S FIRST  
*BESPOKE LIFESTYLE*

Dlu Group a synonym of Luxury, coming up with new project relishing comfort and brilliant life style. Dlu Altezza is bringing you closer to luxuries and convenience making your life better. A castle on land with spacious inside out.





## A WELCOMING ARRIVAL

Arrival at Blu Altezza ushers a sense of entering to a whole new set of emotions. A reception that is well-polished, beautifully maintained and with delicately designed interiors. The arrival embarks with your entry to the foyer area enwrapped with a warm embrace of tranquility. A spacious sitting area where you can sit in silence or make small talk with visitors and guests.



## AN OVERWHELMING EXTRAVEGANCE

Blu Group is a synonym of Luxury, coming up with new projects relishing comfort and brilliant life style. Blu Altezza, a project speaks brand new language of luxuries with the most affordable price to make your dream of the house come true.







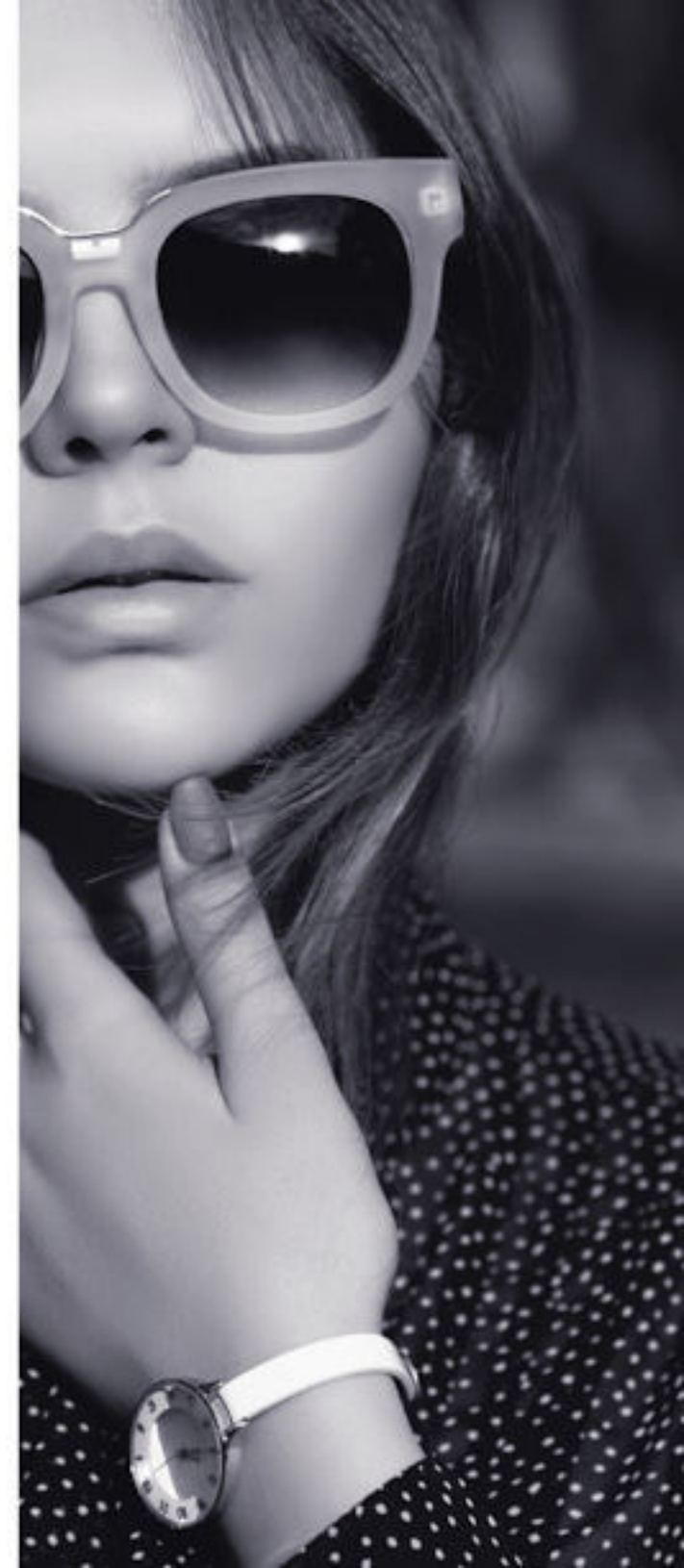
**A CITY YOU THOUGHT YOU KNEW,  
IS NOW LAVI SHLY NEW.**





## A PLAYFUL MEADOW

A court to re-live the childhood with your kids. Going all nostalgic while taking a break from the hectic life. Children's play area and senior citizen sitting area is carefully bifurcated with requirements.











## A LUSH BACKYARD

Enjoy unwinding in the lap of nature, in the lush and lavish garden while still well within the confines of Blu Altezza. Being close to home, yet still frolic within such a calming place is an unfathomably joyous experience.





**J**OGGING  
TRACK WITH  
WOODEN FLOORING



**2** CAR  
PARKING FOR  
EACH FLAT









**CONNECTING THE LIFE AND MADE IT  
EASY WITH ALL THE COMFORT.**





## AN INVIGOURATING ARENA

Turn heads and win hearts when you get in that perfect physique with the spacious gym. with the latest equipment and an enlivening ambience, it is all you need to get inspired to break some sweat and feel awesome for the rest of your day.





## A BUSTLING INSIDE

Keep yourself, friends and kids busy and active with access to a One-of-a-Kind Indoor Games Arena. Stay young at heart by impinge your skills in multifarious indoor games.







A group of six people are gathered around a birthday cake with lit candles. They are in a room with warm, golden lighting and a large, ornate chandelier hanging from the ceiling. The scene is festive and celebratory.

**A GLEE PARTY** WHERE YOUR 12 A.M. PARTY MATTERS.

"SLEEP SOUND OR PARTY HARD,  
YOUR NEIGHBORS WON'T BE  
BUGGED BY THAT."

**6** FEET  
DISTANCE  
BETWEEN  
TWO HOUSE  
WALL.

A couple is shown sleeping peacefully in a bed. The room is dimly lit with a blue hue, suggesting a quiet, restful environment. The couple is lying on their sides, facing each other.

**A SOUND SLEEP** WHERE YOUR 12 A.M. SLEEP MATTERS.





## A LIVELY LIVING

After a hustling day spend some quality time with your family. A Spacious space for a get together with family and friends. An outstanding quality of flooring with granamite tile to make the ambience sooth your lifestyle.



## A PLEASANT DINE

Devour the classics with pleasing ambience at your most comfortable zone. Plan dines with your troop, and serve a flavor your mother loves to cook. Classy and highly attractive black granite platform and decorative tiles dedo up to lintel level, with a connection of gujarat gas line & Pre-installed water purifier.







## A CROWNING COMFORT

Well designed and spacious bedrooms with scenic views, make sure that you get a well sought after sleep at the end of a hectic day.













TYPICAL FLOOR PLAN  
(G+14 FL.)

18mt. WIDE ROAD



GROUND FLOOR PLAN  
(G+14 FL.)

18mt. WIDE ROAD







# TYPICAL FLOOR PLAN





# AMENITIES

## FLOORING

- 32"X32" GRANAMITE TILE FLOORING IN LIVING & DINING ROOM. 2'X2' GRANITE TILES IN ALL BEDROOMS AND WOODEN FLOORING IN MASTER BED ROOM.

## KITCHEN

- BLACK GRANITE PLATFORM WITH 0.0 SINK.
- DECORATIVE TILES DEDO UP TO LINTEL LEVEL.

## STORE

- KOTAH STONE RACKS AND DEDO WITH STANDARD QUALITY TILES.

## PLUMBING

- LSI BRAND CPVC & UPVC PLUMBING & DRAINAGE PIPING.
- FLAT-WISE CENTRAL PLUMBING SYSTEM FOR HOT WATER.

## ELECTRIFICATION

- MODULAR SWITCHES.
- CABLE AND OTHER FITTING WITH ISI STANDARD OF GOOD QUALITY.

## WALL FINISH

- LAPI FINISH ON ALL INTERNAL WALLS.

## BATHROOM

- 12"X24" MATT FINISH DESIGNER TILES.
- STANDARD SANATERY FITTINGS.

## DOOR

- DECORATIVE MAIN DOOR.
- FLUSH DOOR SHUTTER.
- WOODEN GRANITE FRAME FOR ALL DOORS.

## WINDOW

- POWDER COATING ALUMINIUM SECTION WITH REFLECTIVE GLASS OF STANDARD QUALITY.
- GRANITE ON ALL WINDOW SILLS.

# SALIENT FEATURES

- Generator facility for common lighting plus 6 points in flats.
- Water proofing in terrace along with china mosaic tiles flooring.
- Building with two coat outer plaster.
- 2 elevators / lift of standard company.
- SMC water supply & Water purifier.
- Paver blocks in parking area and vds tri mix in road.
- 2 cars parking for each unit.
- Health club, Walking track, Skating ring.
- Outdoors children play area & Senior citizen sitting area.
- Checkered flooring inside building plinth.
- Granamite tiles flooring and wall cladding in foyer.
- Under ground and overhead water tank.
- Sufficient street light in campus.
- Intercom facilities & C.C.T.V. configuration in all common areas and entrance foyer.
- Gujarat Gas line.



# AMENITIES



## Accorded with INTERCOM

For the quick and easy communication.



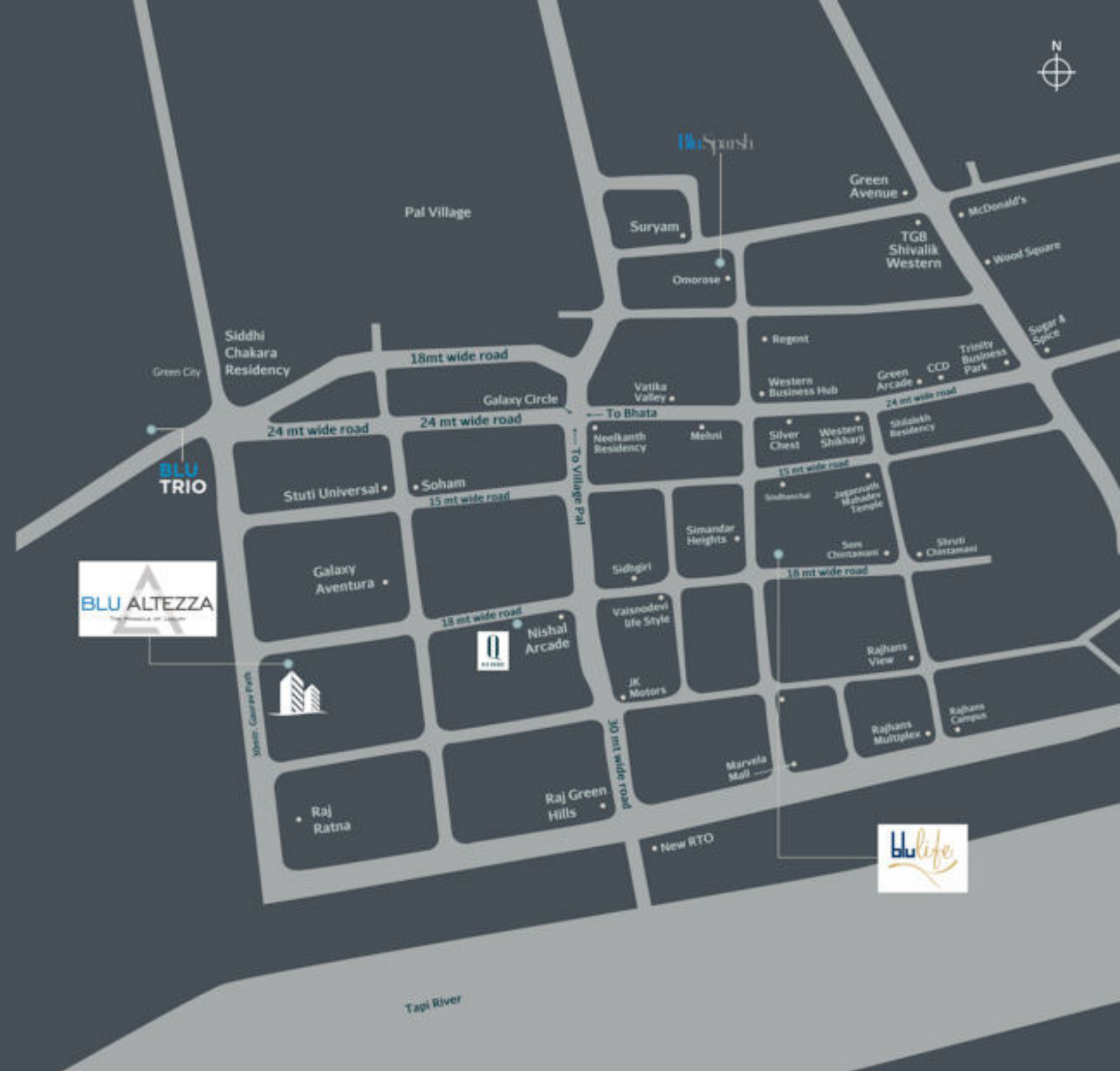
## CCTV surveillance

Quince takes the business of security seriously. The apartment is comprised of CCTV cameras all over the building, keeping the track of all the happenings in the premises.



## WATER PURIFIER

Pondering over one of the essential features, a water purifier is fixed in each homes



## CONNECTIVITY:

Surat Diamond Bourse	9.00 KM	Proposed Umra - Pal Bridge	2.00 KM
Domestic Airport	14.00 KM	Sanjivkumar Auditorium (SMC)	1.05 KM
Railway Station	10.00 KM	New R.T.O. Office	2.00 KM
Cable Bridge	3.00 KM		



## DEVELOPERS



## ARCHITECT



## STRUCTURAL



## Member



## DISCLAIMER

- The furniture and fixtures are merely for presentation and interpretation purpose only. In no case, they will be the same as final deliverables.
- The elements, color combinations, materials, look and feel are artist's way of representation and merely for presentation purpose. In no case, it will resemble the amenities or facilities of the final deliverables.

### Note

- The rights to make any modification or changes in the way of designing and presentation by the architect or developer shall bound to the members only.
- BUC (Building Use Certificate) as per SMC rules, clear titles for loan purpose.
- This is not a legal contract but a brochure for private circulation only.

### Requirements

- The purchaser bares the charges such as stamp duty, registration charges, legal charges, GEB/SMC charges, society maintenance charges (from the date of BUC), etc.
- The other taxes, VAT, Service Tax, TDS, GST levied in future will be bared by the purchaser only.
- Any additional charges or duties levied by the government or local authorities during or after completion of the scheme like SMC tax, society maintenance charges, etc. shall be bared by the purchaser.
- In the interest of continual developments in design and quality of construction, the developer reserves all rights to make any changes in the scheme including technical specifications, designs, planning, layout and all purchasers shall abide by such changes.
- Changes/Alterations of any nature including elevation, exterior color scheme, balcony grill or any other changes affecting the overall design concept and outlook of the scheme are strictly NOT PERMITTED during or after the completion of the scheme.
- Any RCC member (Beam, column and slab) must not be damaged during the interior work of the purchaser.
- Low voltage cables such as telephone, TV and internet cables shall be strictly laid as per consultant's advice drawings with prior consent of developer's/builder's office. No wire/cables/conduits shall be laid or installed such that they form hanging formation on the exterior faces.
- The brochure is intended only for easy display and information of the scheme and does not form parts of the legal documents.
- Common passages/landscaped areas are not allowed to be used for personal purpose.
- Internal changes will be done only with prior approval and it will be charged extra with total responsibility of purchaser.
- Subject to Surat jurisdiction.







## A CONVENIENT NEARNESS

Located bang near Surat Airport and the Metro station and most arterial roads you are sure to find yourself well connected so travel for you would be a breeze.

