

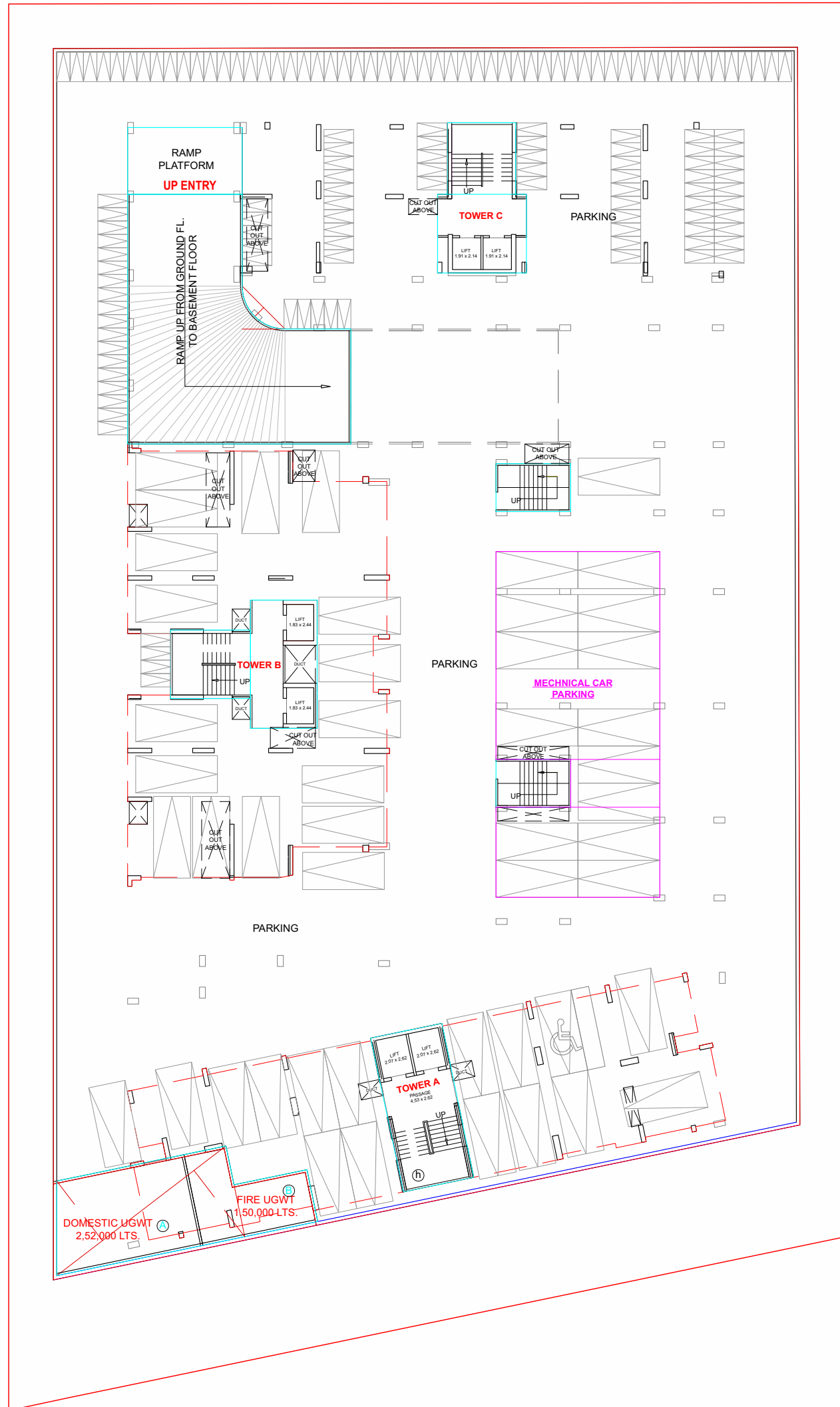


CASA CIELO

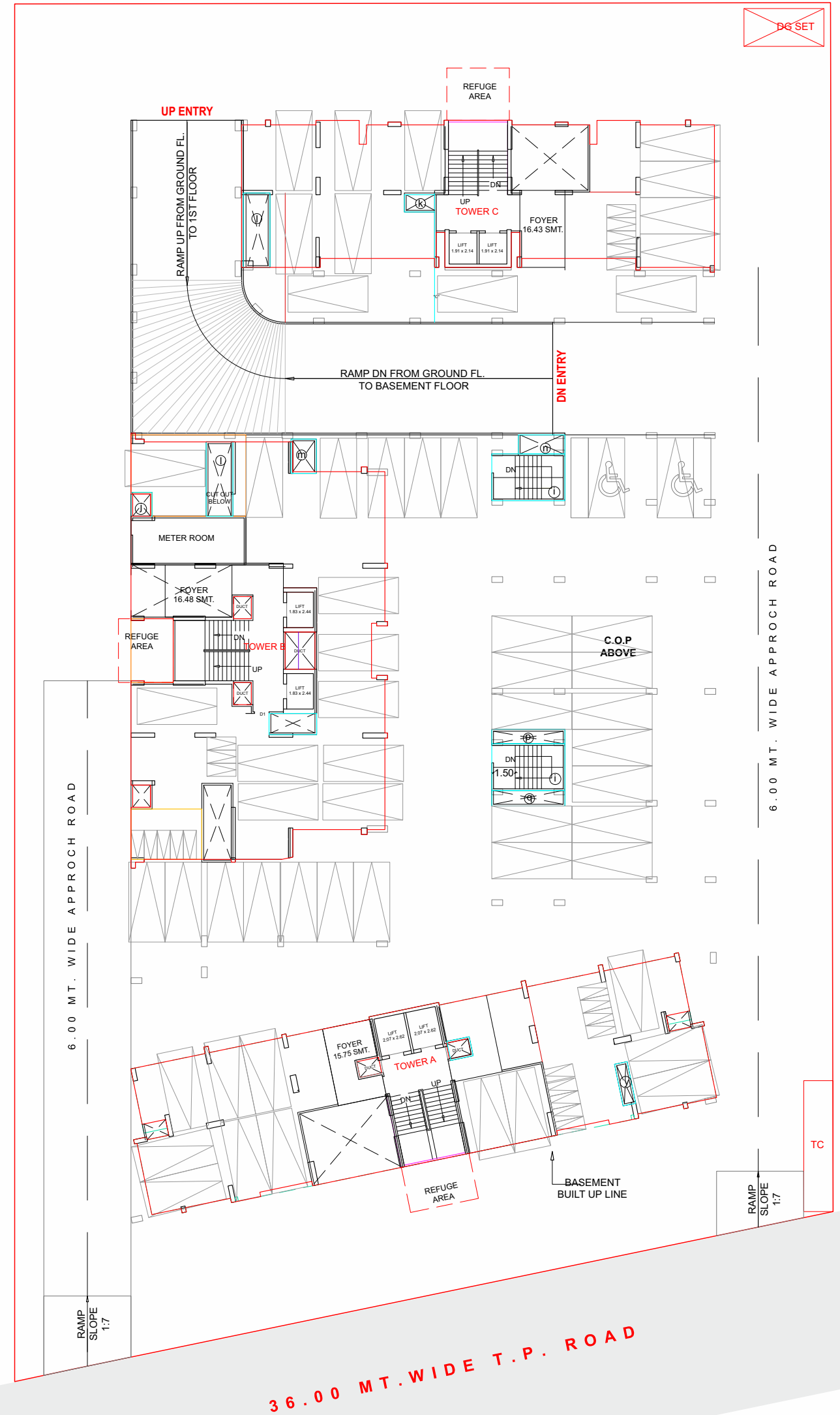
your sky, beyond luxury living

3 & 4 BHK SKY LIVING **4 & 5 BHK** PENTHOUSE SKYVILLA

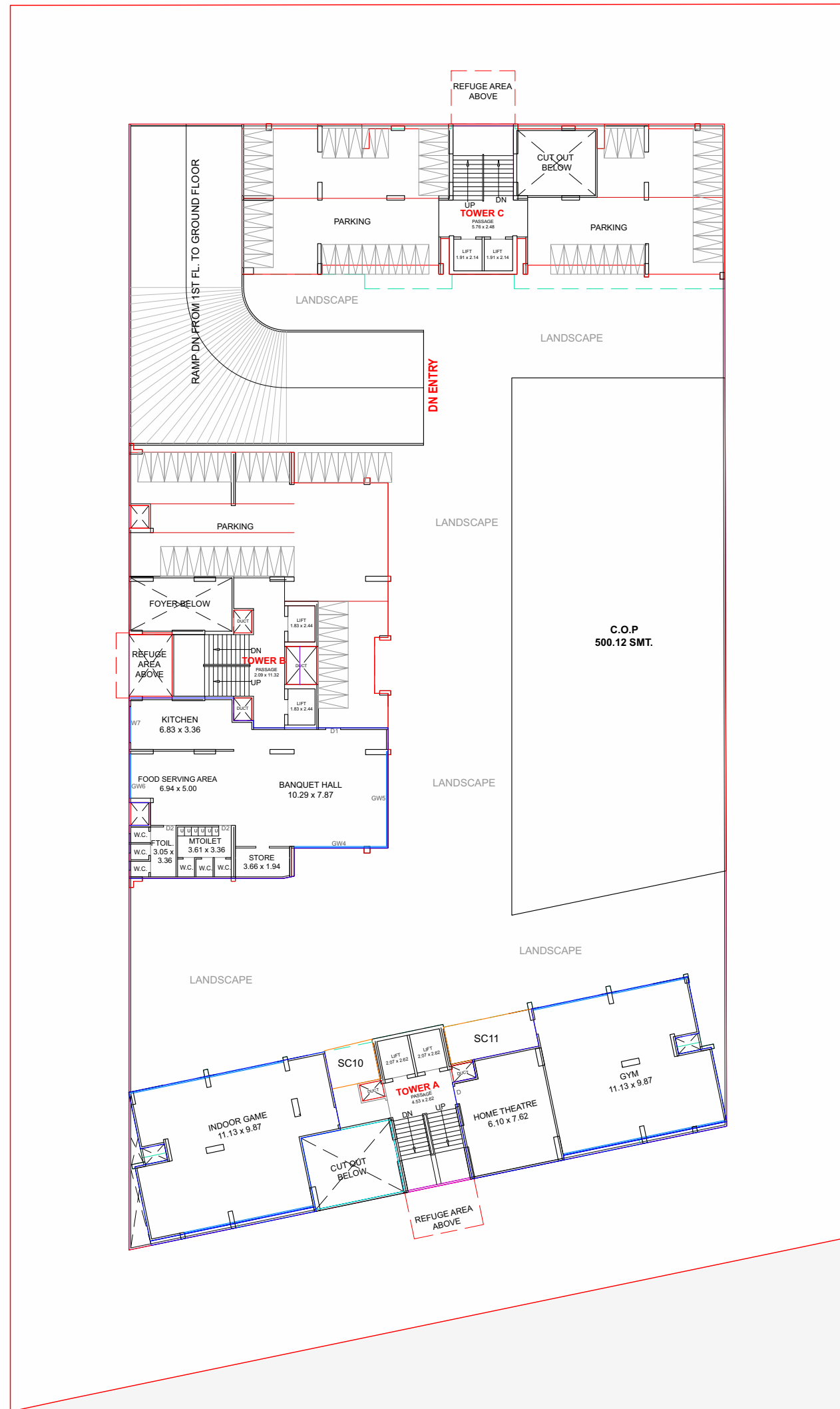
**BASEMENT
PLAN**

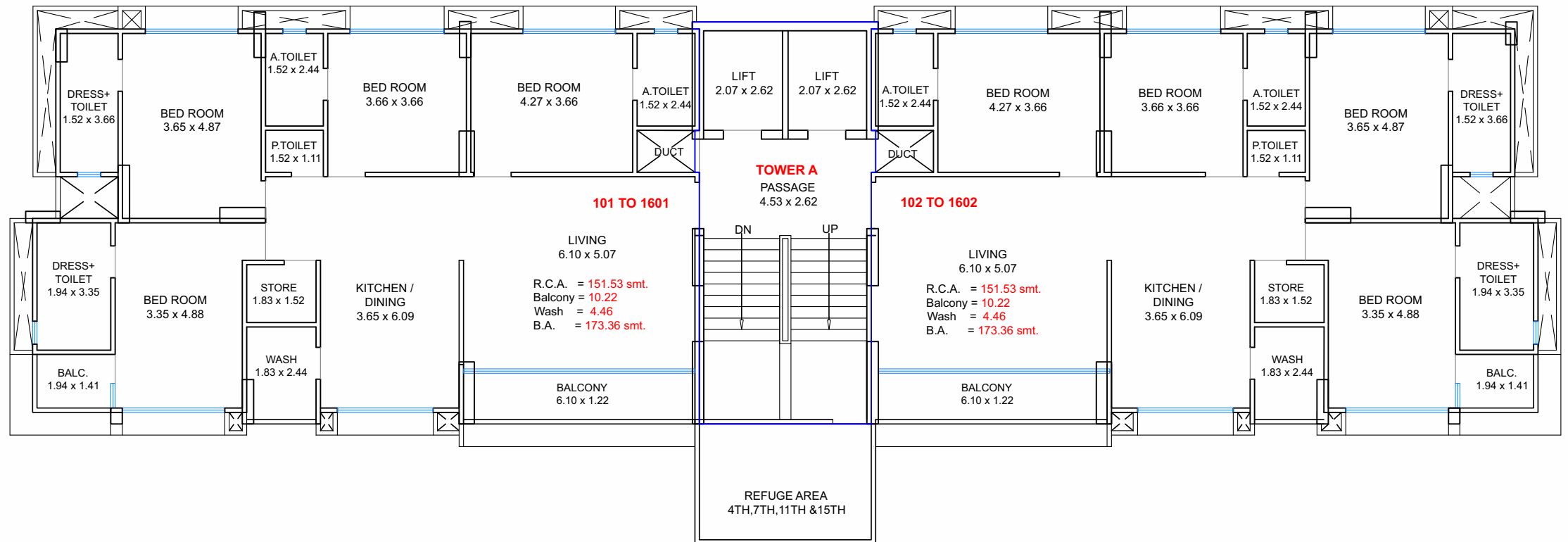


**GROUND
FLOOR PLAN**



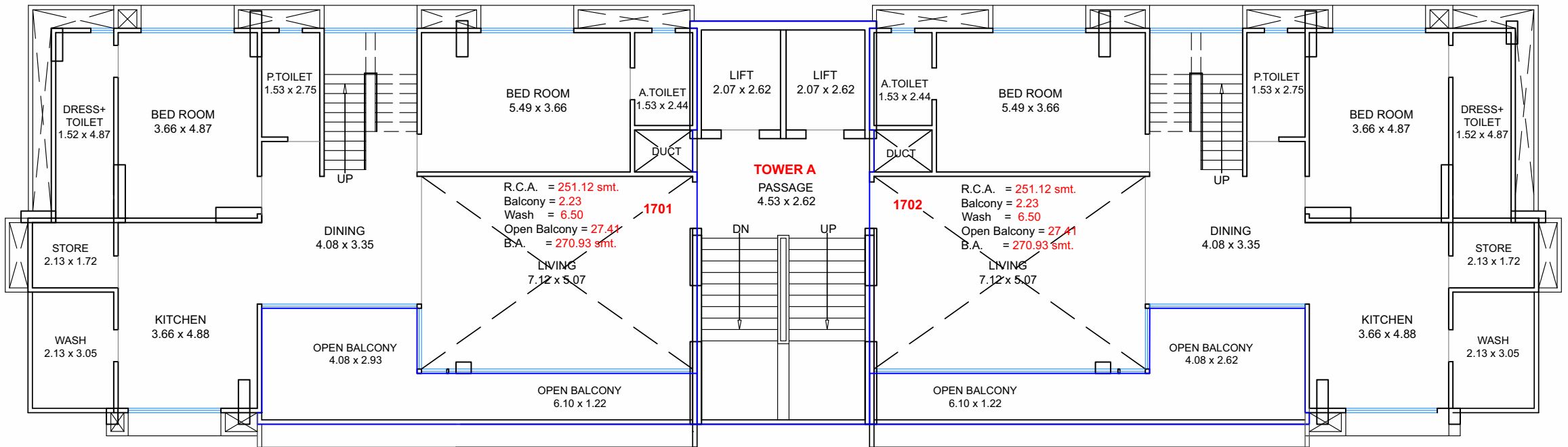
1ST FLOOR
PODIUM LEVEL

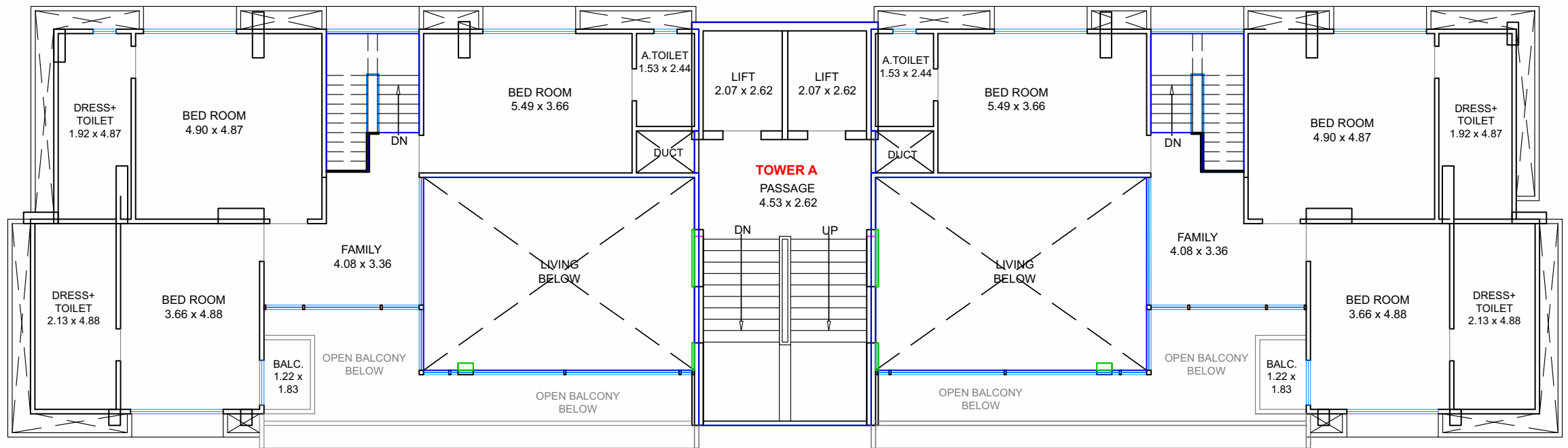


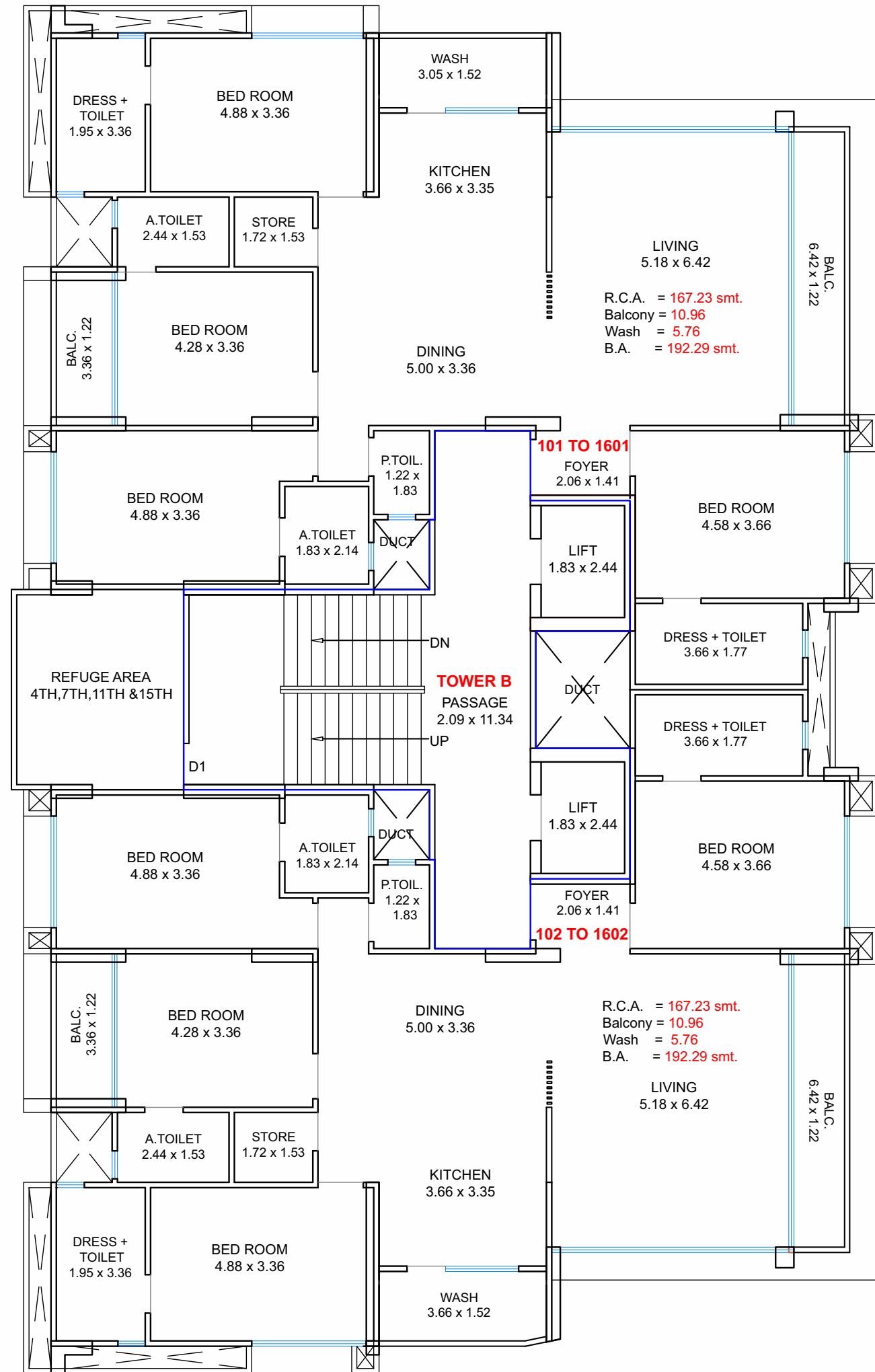


TOWER - A

PENTHOUSE 18TH FLOOR PLAN



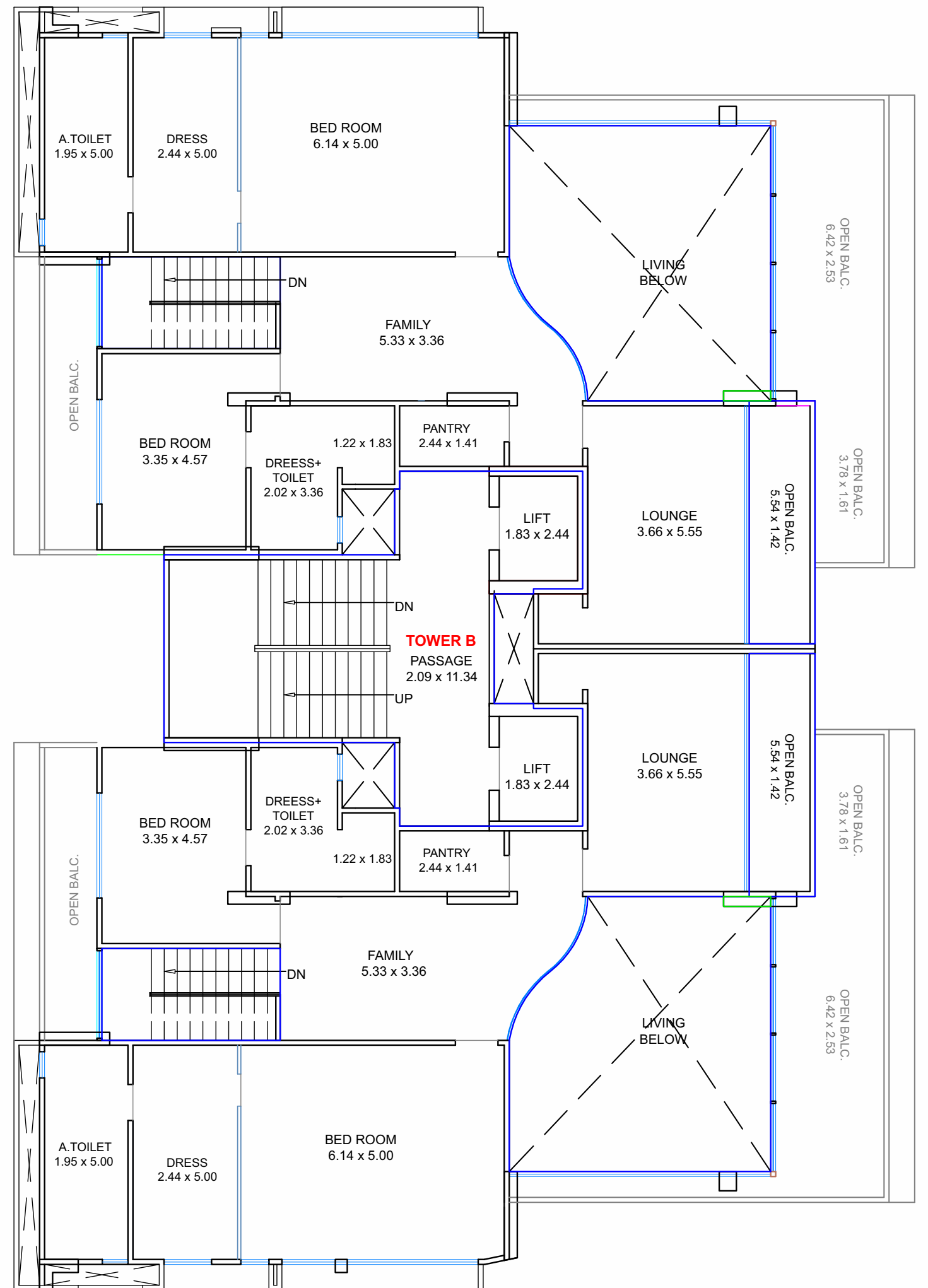
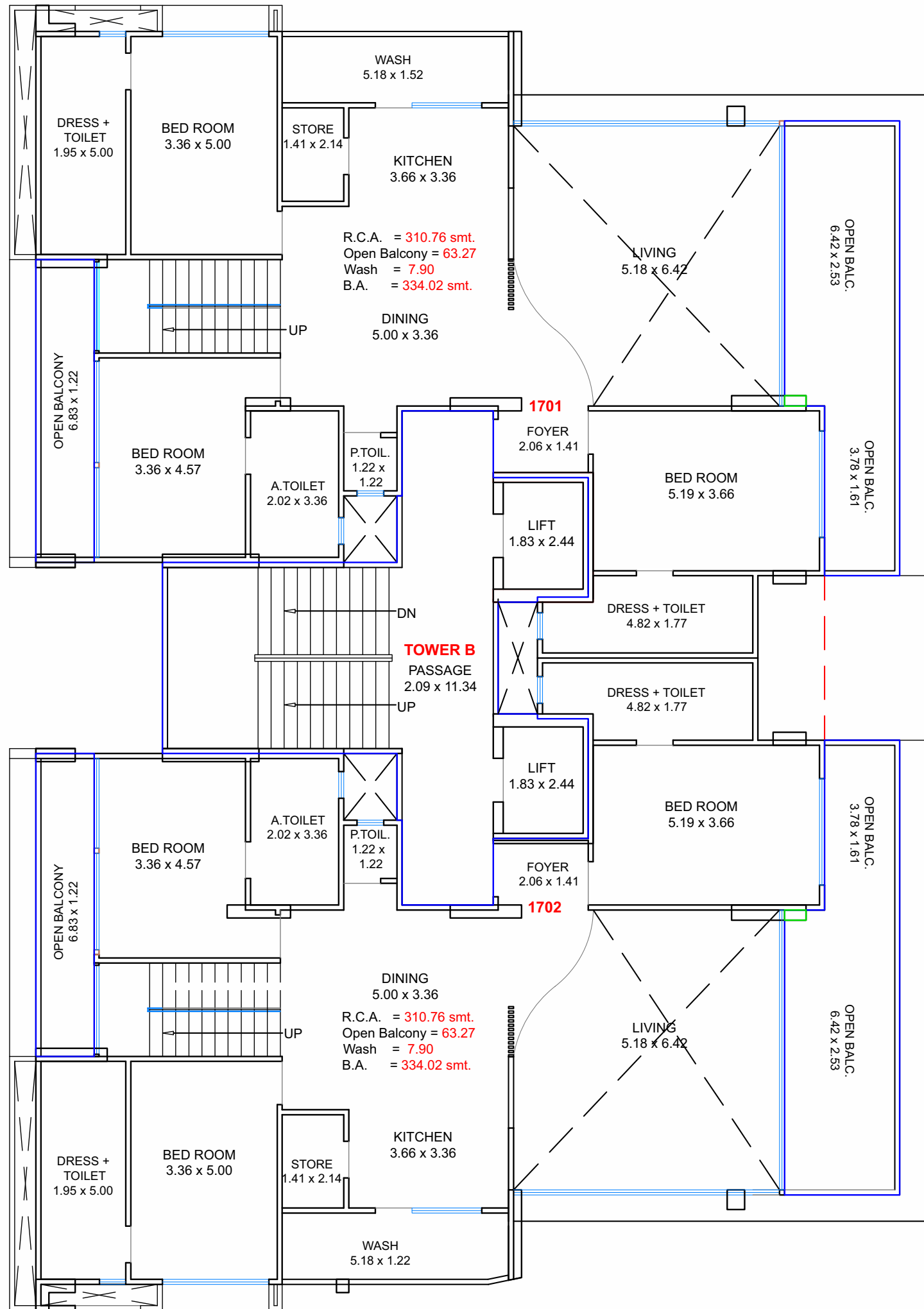


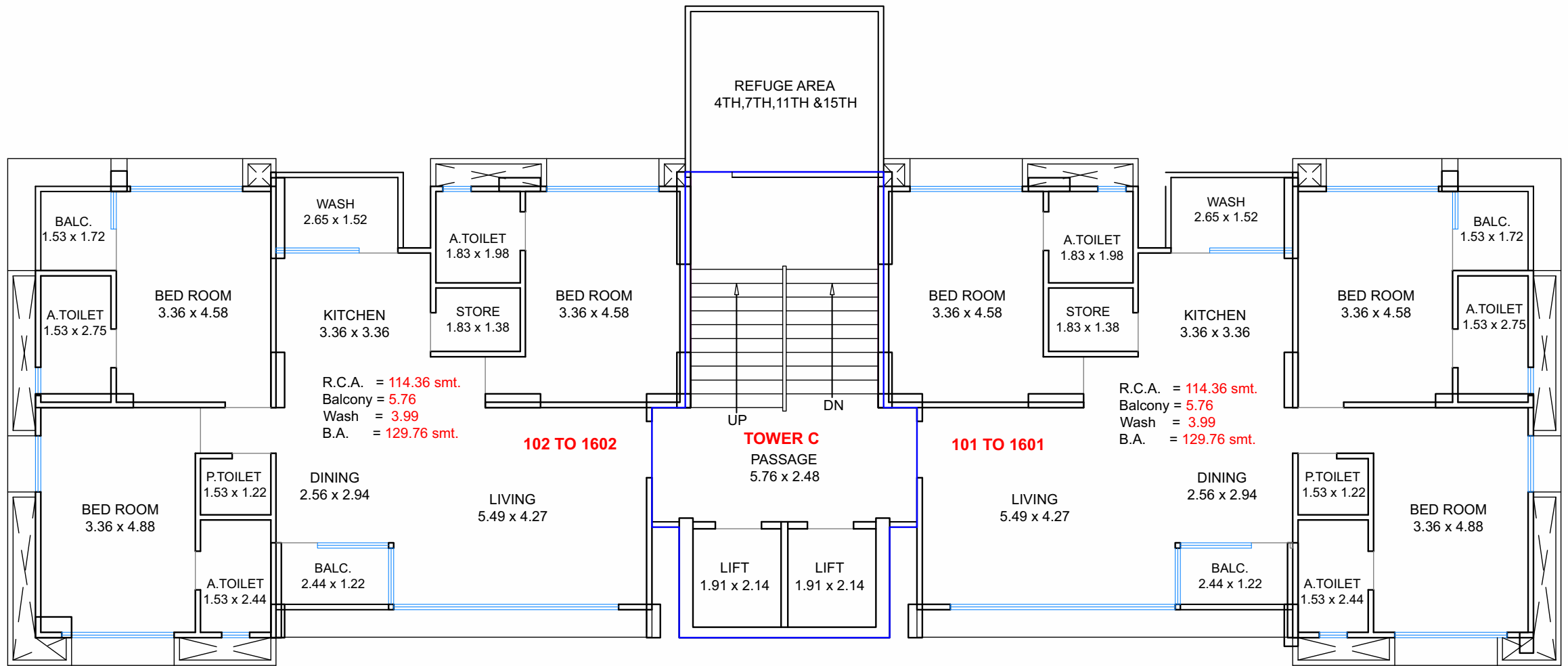


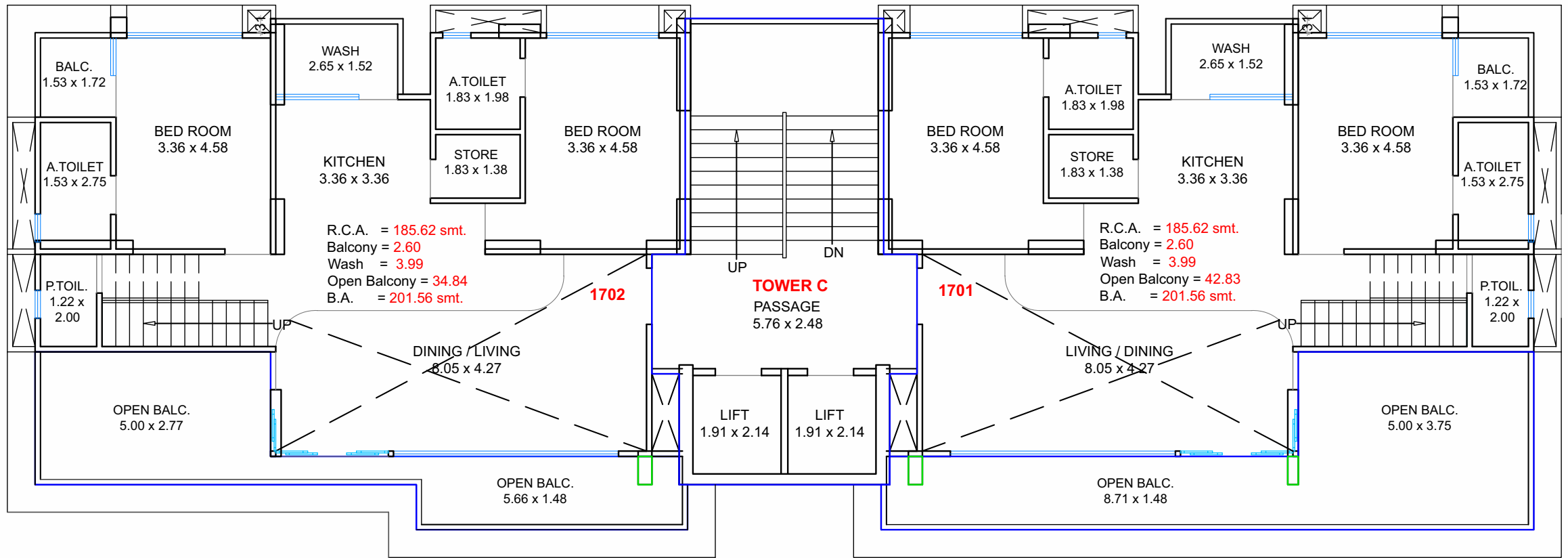
CASA CIELO

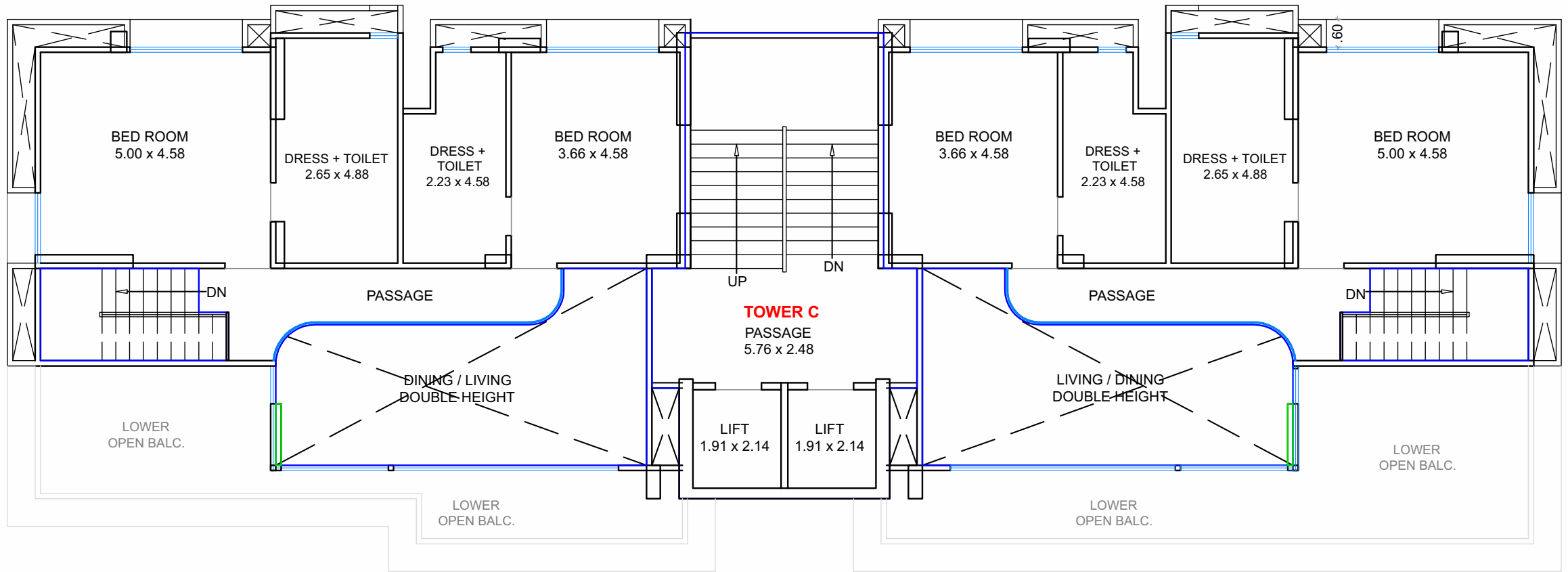
your sky, beyond luxury living













SPECIFICATION

STRUCTURE

- Earthquake resistance R.C.C. framed structure as per IS code

EXTERNAL WALL FINISH

- Double coat plaster with exterior weather shield paint
- External finishing with texture

ELEVATORS

- Good quality auto door elevator of Omega

STAIRCASE & PASSAGE

- Granite / Vitrified tiles Finish with railing

WATER SUPPLY

- U.G. & overhead water tank for SMC water of sufficient storage capacity

RECEPTION FOYER

- 25 feet height entrance foyer at ground floor

SAFETY & SECURITY

- Gated campus with security cabin
- Fully equipped fire fighting system
- 24 X 7 CCTV surveillance
- Intercom facility in each flat

PARKING

- Ground floor with single Basement parking.

ELECTRICAL & POWER BACKUP

- Adequate generator for common facility
- Light fitting of standard make in common passage & campus.

NO. OF FLOORS

- one basement parking + Ground level + 19 floors

Site Address :

Casa Cielo, Next To Awadh Palasburry Bungalows,
Abrama Main Road, Mota Varachha, Surat - 394105

CASA CIELO

your sky, beyond luxury living



Developers
Bhadra Enterprise

Contact:
7016894862

Architect:



Landscape Architect:

MPLA
pvt ltd

Structure:



RERA REG. NO.:

www.gujrera.gujarat.gov.in