

sampad[®]
— simply better value —

sampad.co.in



CENTRUM

— by sampad —

3 BHK SPLENDID APARTMENTS



sampad[®]
— simply better value —

Where comfort and lavish living is central! Welcome to Sampad Centrum!

Providing people with a rich yet affordable lifestyle, Sampad aims to create thriving communities across the city. The all-new 3BHK apartments project, Centrum, is situated in the most happening area of the town, Motera. With Riverfront being extended up to Motera, and the presence of the Sports complex, Sampad is seen to be the fastest developing company in Motera. The government and the corporation have also shown keen interest in the development of this zone. Sampad too, wanting to be at the centre of development, has come up with Centrum to provide a reasonably lavish lifestyle to the people of Motera!

UPCOMING PROJECTS

ETERNIA

— by sampad —

3 BHK APARTMENTS

@ Chandkheda

PRIMERO

— by sampad —

3 BHK APARTMENTS

@ Motera

UNICO

— by sampad —

Retail & Hotel

@ Motera

ANANTA

— by navpad —

3 BHK APARTMENTS

@ Kalol



Experience a lifestyle of *Ultra-Comfort* at Centrum

When convenience is combined with and higher living... you get ultra-comfort. At centrum, we have lined up an array of amazing amenities, that don't just serve one, but all! From spacious play areas to gazebos and gyms to community gathering space, we have it all so that everyone feels welcome and comfortable.

Experience a
Nurturing Community at Centrum

It is important for your family to be surrounded in by environment that is safe, nurturing and also adds value to their lives. Gift your kids, spouses and parents, the lifestyle that is envied by many and enjoyed by few. Generating a peaceful environment, Sampad Centrum is built to help you grow and prosper in life!





Experience *New Worlds* at Centrum

In order to endorse a richer lifestyle, Centrum provides you with a Reading Lounge where you can sit back and explore new worlds as new unfurl pages of your books and novels. With "working from home" being the new normal, you can also bring your laptop and files, to get some privacy during your work hours.

Experience a *Sporty Culture* at Centrum

Abuzz with activities, Centrum brings forth exciting amenities that ensure you are always on your toes. Centrum provides gyms, multi-functional court, yoga pavilion, etc. in order to promote a healthy lifestyle. Don't just live when you can thrive and enjoy a wholesome life at Centrum.



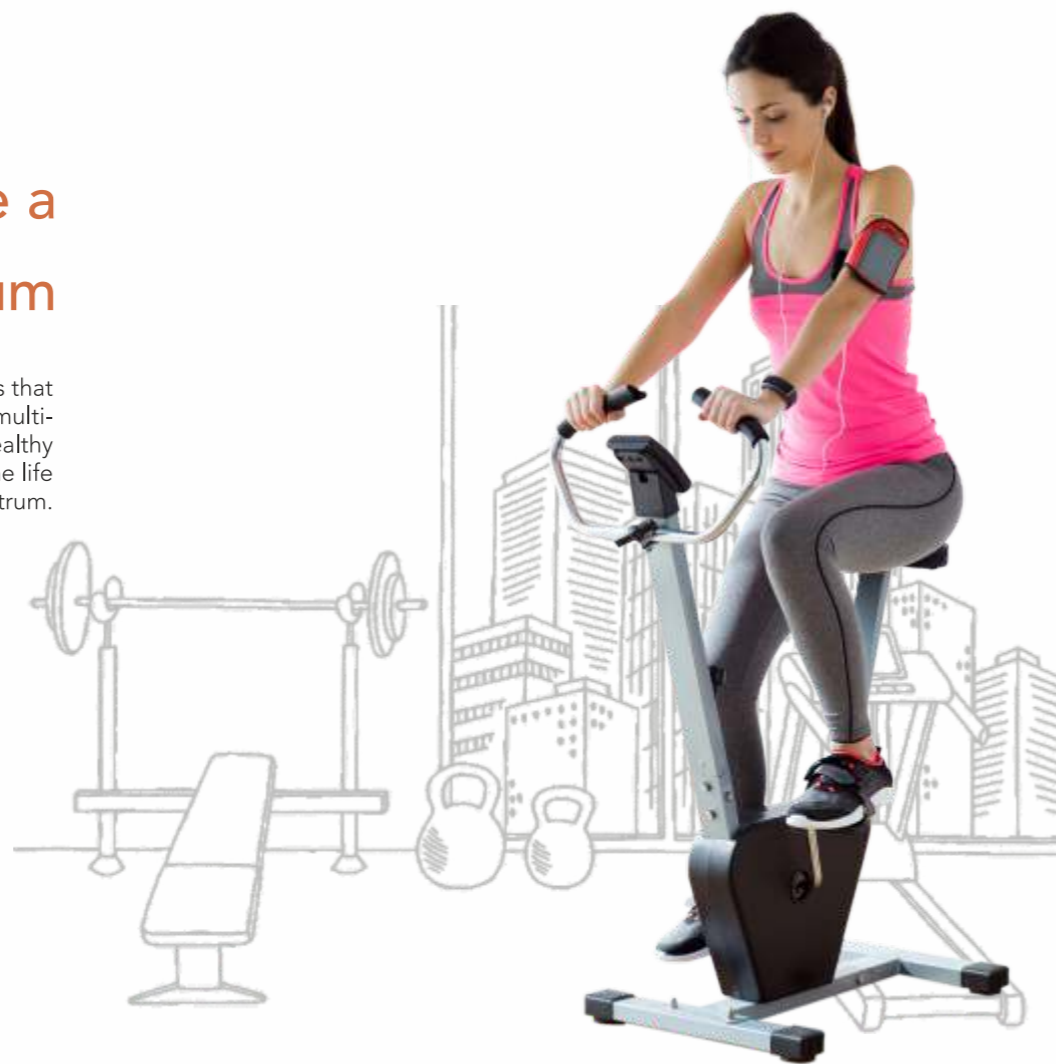


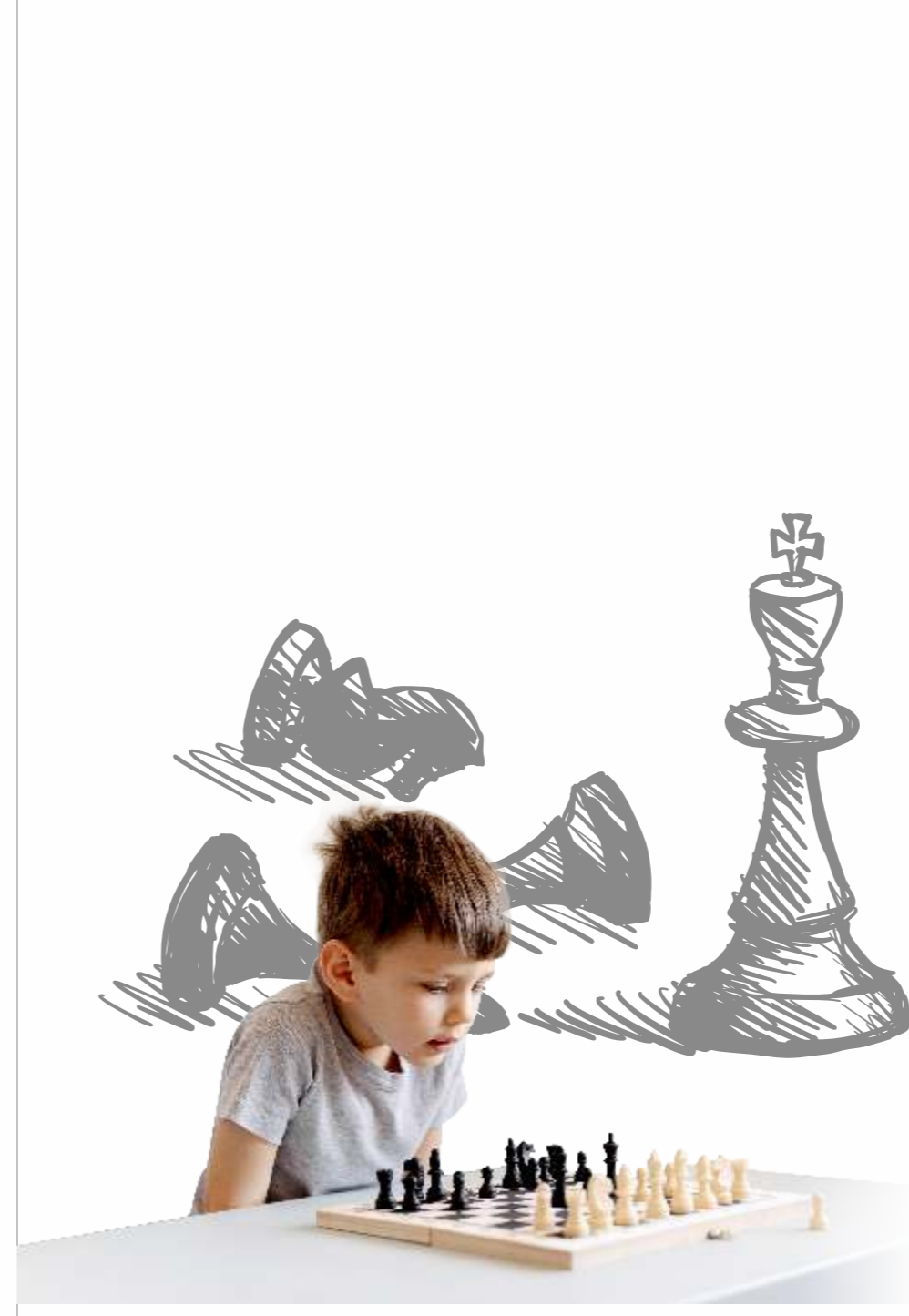
Experience *Best Childhood* at Centrum

When you choose Centrum, you are gifting the best childhood to your little angels! Let them open up and experience the joys of exploring new sports on the play lawn and make new friends in the Children's Play Area. Specifically catering to their likes and needs, we provide them with their own space where they are free to spend their precious playtime.

Experience a *Sporty Culture* at Centrum

Abuzz with activities, Centrum brings forth exciting amenities that ensure you are always on your toes. Centrum provides gyms, multi-functional court, yoga pavilion, etc. in order to promote a healthy lifestyle. Don't just live when you can thrive and enjoy a wholesome life at Centrum.





Experience *Best Childhood* at Centrum

When you choose Centrum, you are gifting the best childhood to your little angels! Let them open up and experience the joys of exploring new sports on the play lawn and make new friends in the Children's Play Area. Specifically catering to their likes and needs, we provide them with their own space where they are free to spend their precious playtime.

Experience a *Sporty Culture* at Centrum

Abuzz with activities, Centrum brings forth exciting amenities that ensure you are always on your toes. Centrum provides gyms, multi-functional court, yoga pavilion, etc. in order to promote a healthy lifestyle. Don't just live when you can thrive and enjoy a wholesome life at Centrum.





BASEMENT

Plan



LAYOUT

Plan



LEGEND

- 01 Entrance Gate
- 02 Security Cabin
- 03 Drop Off Zone
- 04 Welcome Sculpture Court
- 05 Water Feature
- 06 Reading Lounge / Community Gathering Space
- 07 Lawn
- 08 Gazebo Sit Out
- 09 Pathway
- 10 Banquet Hall
- 11 Children's Play Area
- 12 Meter Room
- 13 Indoor Game
- 14 Play Lawn
- 15 Multi Functional Court
- 16 Gym
- 17 Outdoor Sit Out
- 18 Yoga Pavilion
- 19 Ramp To Basement Parking
- 20 Parking

TYPICAL

Floor Plan

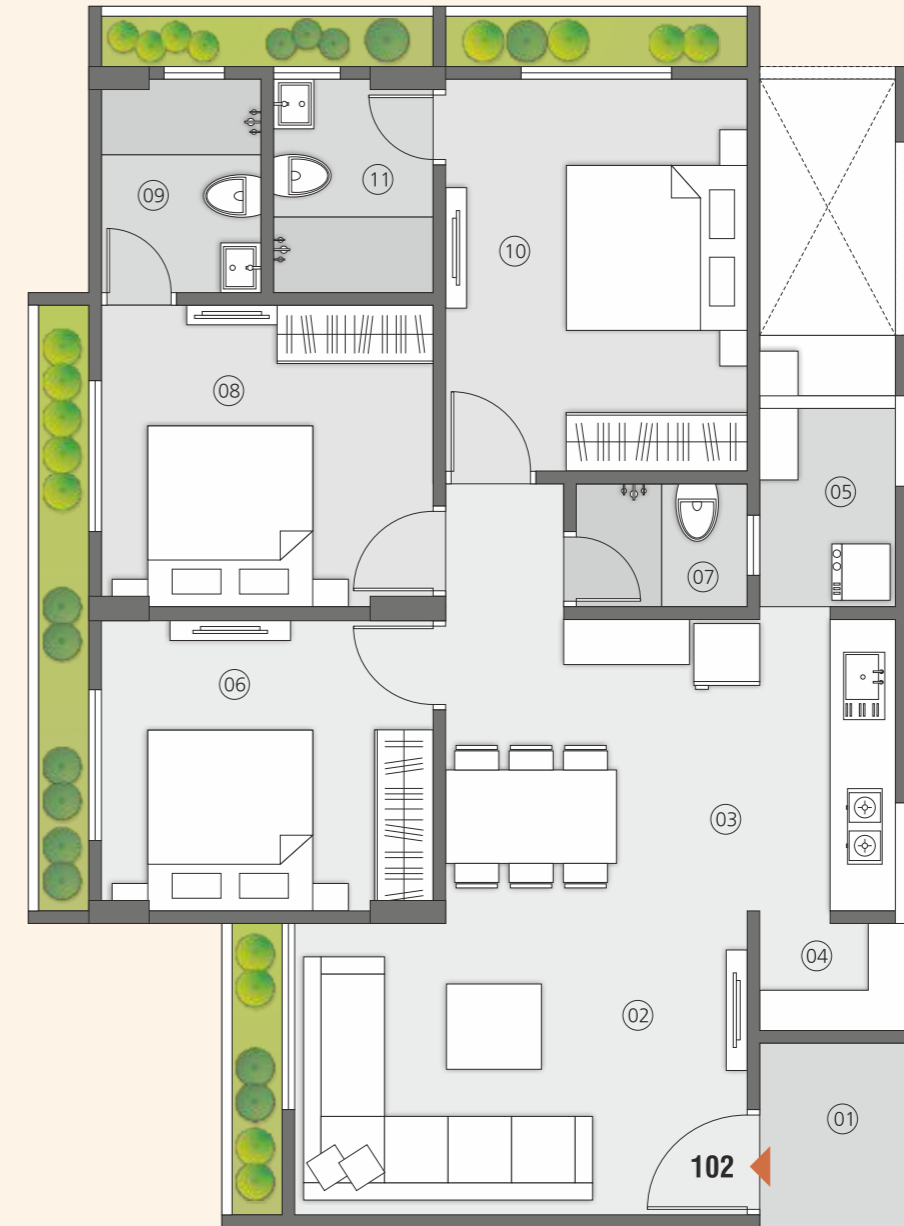
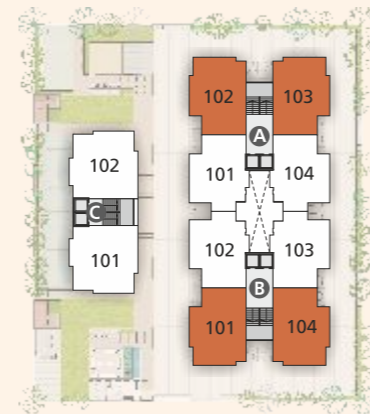




3 BHK

Type 01 - A (102 & 103)

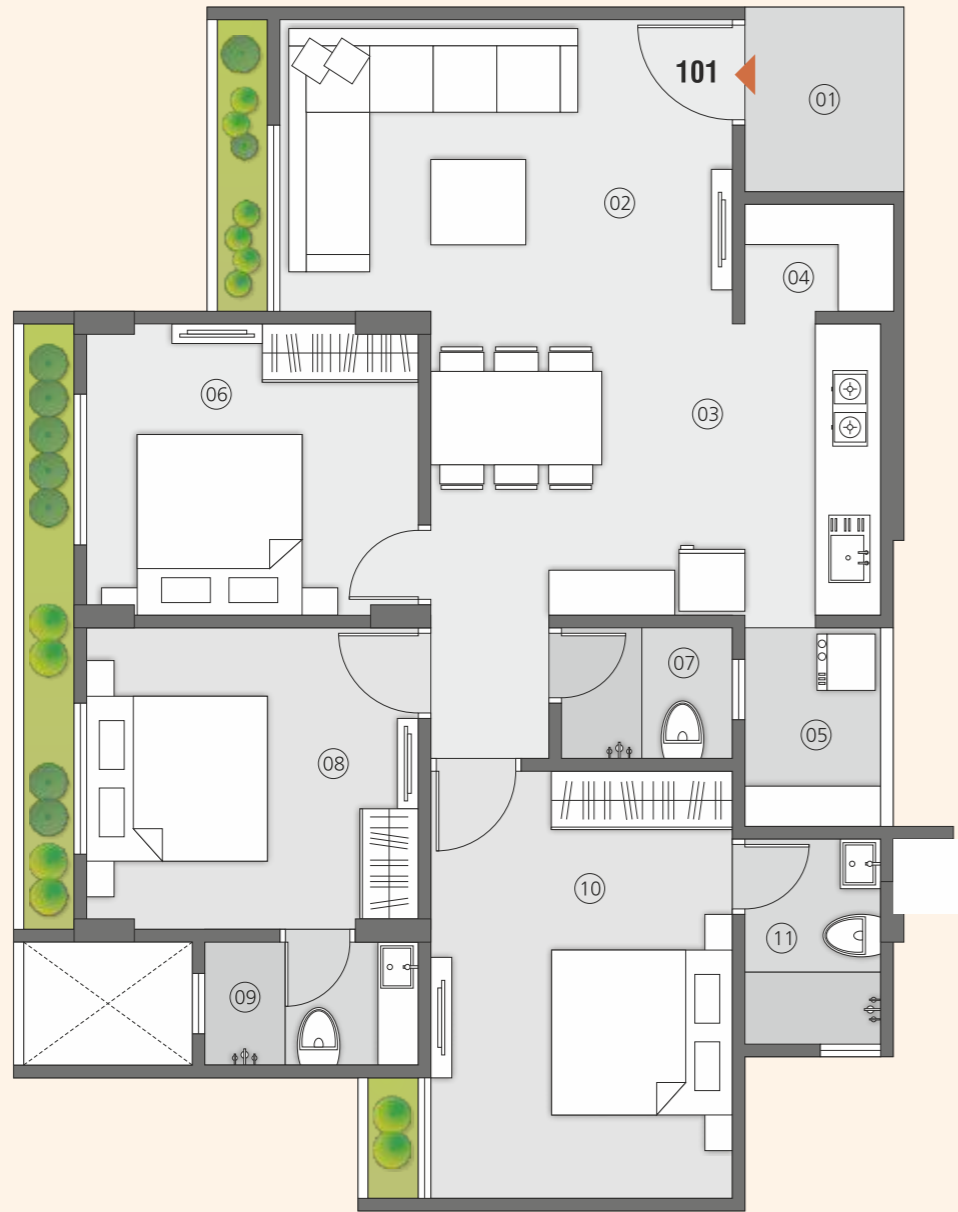
B (101 & 104)



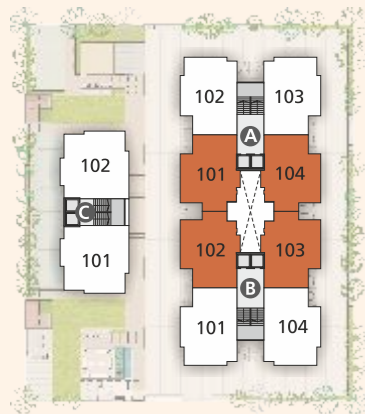
01 VESTIBULE	5' 2" X 5' 10"
02 LIVING ROOM	15' 0" X 10' 0"
03 KITCHEN/DINING	14' 9" X 9' 6"
04 STORE	4' 10" X 3' 6"
05 WASH	4' 6" X 6' 6"
06 BEDROOM 01	11' 0" X 9' 6"
07 C.TOILET	5' 6" X 4' 0"
08 BEDROOM 02	11' 0" X 10' 0"
09 A.TOILET	5' 3" X 7' 0"
10 BEDROOM 03	10' 0" X 13' 0"
11 A.TOILET	5' 3" X 7' 0"

3 BHK

Type 02 - A (101 & 104)
B (102 & 103)

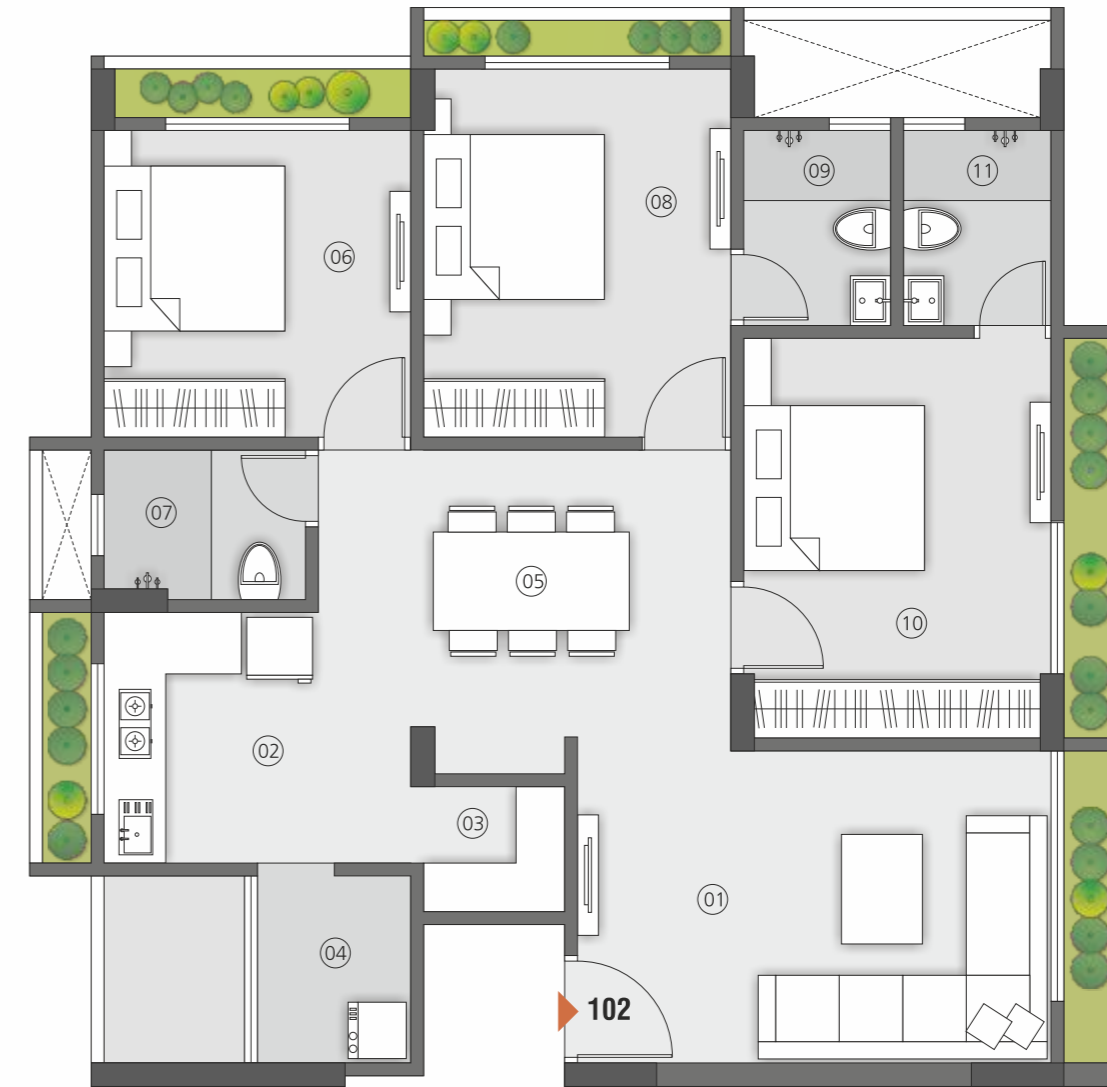


01 VESTIBULE	5' 2" X 5' 10"
02 LIVING ROOM	15' 0" X 10' 0"
03 KITCHEN/DINING	14' 9" X 9' 6"
04 STORE	4' 10" X 3' 6"
05 WASH	4' 6" X 6' 6"
06 BEDROOM 01	11' 0" X 9' 6"
07 C.TOILET	5' 6" X 4' 3"
08 BEDROOM 02	11' 0" X 10' 0"
09 A.TOILET	7' 0" X 4' 0"
10 BEDROOM 03	10' 0" X 14' 0"
11 A.TOILET	4' 6" X 6' 9"

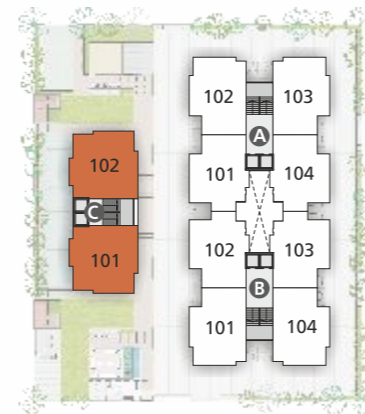


3 BHK

Type 03 - C (101 & 102)



01 LIVING ROOM	16' 0" X 10' 0"
02 KITCHEN	10' 3" X 8' 0"
03 STORE	4' 0" X 6' 0"
04 WASH	5' 6" X 6' 0"
05 DINING	10' 0" X 9' 9"
06 BEDROOM 01	10' 0" X 10' 0"
07 C.TOILET	6' 6" X 4' 9"
08 BEDROOM 02	10' 0" X 12' 0"
09 A.TOILET	4' 9" X 6' 3"
10 BEDROOM 03	10' 0" X 13' 0"
11 A.TOILET	6' 9" X 4' 6"



SPECIFICATIONS



Structure

- RCC frame wall structure designed for seismic conditions as per regulations & codes.



Door

- Heighten decorative veneer finished main door with wooden framing
- Flush doors with double side oil paint colour in internal area with wooden framing
- Doors with high quality locking arrangements.



Apartment Flooring

- Hi-premium 800x800mm vitrified flooring Rustic tiles in balcony. | Anti-skid vitrified & kota stone mix flooring in wash area.
- Anti-skid vitrified tiles in bathrooms.



Kitchen

- Exclusive Kitchen platform with granite stone with ceramic/SS sink
- Granite shelves in store room
- Glazed tiles above platform up to lintel level.



Electrical

- 3 phase concealed ISI copper wiring with modular switches, ELCB panelling for maximum safety
- Adequate numbers of charging points AC points in 3 rooms
- TV points in drawing room with DTH/GTPL wiring



Wall Finish

- Internal wall mala plaster with putty finish
- External wall texture with acrylic paint.



Toilet

- CP brass fittings - (Jaguar/equivalent make)
- Wall mounted closet (Cera/Simpolo equivalent make)
- Concealed plumbing for hot & cold mixture for shower
- Astral brand/equivalent UPVC pipes for water/waste supply
- Counter basins in bathrooms.



Windows

- Powder coated/anodized heavy aluminium windows of section with granite jamb
- Heat reflective & noise reduction window glasses.

AMENITIES & FEATURES



Indoor Game



Multipurpose Hall



Yoga Pavilion



Gathering Space



Gym



Library



Basement Parking



Gazebo



Cool Kids Corner



Security Cabin



Nr. Sampad Albero, B/H Mac Donald, Motera, Ahmedabad - 380005

NEARBY COMMUNE

Gift City	10 Min	International Airport	5 Min	H. B. Kapadia School	10 Min
Apollo Hospital	2 Min	Sabarmati Railway Station	10 Min	Anand Niketan School	10 Min
GCA, Narayani Resort	5 Min	City Pulse, City Gold Multiplex	7 Min	Podar International School	10 Min
PVR, Ring Road & BRTS	5 Min	Motera Stadium, Dmart, 4D Mall	5 Min	River Side School	12 Min
Sabarmati Riverfront	1 Min	H. B. Kapadia School	10 Min	Stadium Metro Station	3 Min



Contact :

+91 70690 48899 | +91 79001 50783

Architect & Landscape :

PDC

Structure Eng. :

Parvati Techno Consultants

Developer :

Sampad Infrastructure

COMPLETED PROJECTS :

sampad
WOODS
3 & 4 BHK PREMIUM LIVING
@ Koteswar Hill

sampad
Foresta
4BHK LUXURIOUS BUNGALOWS
@ MOTERA


संपद
RESIDENCY
2 & 3 BHK Serene Apartment
@ MOTERA

SAMPAD
foliage
4BHK LUXURIOUS BUNGALOWS
@ KOTESHWAR

SAMPAD
HELIOS
4BHK LUXURIOUS BUNGALOWS
@ GANDHINAGAR

Helios NAVPAD
3BHK XXL APARTMENT
@ ZUNDAL