

EARTH ELEANOR

4 BHK MAJESTIC LIVING

Developers
7TH HEAVEN DEVELOPERS

Site: EARTH ELEANOR
Opp. Bopal Police Station
Nr. Aaryan Gloria , Gala Gymkhana Road
Bopal, Ahmedabad - 380058

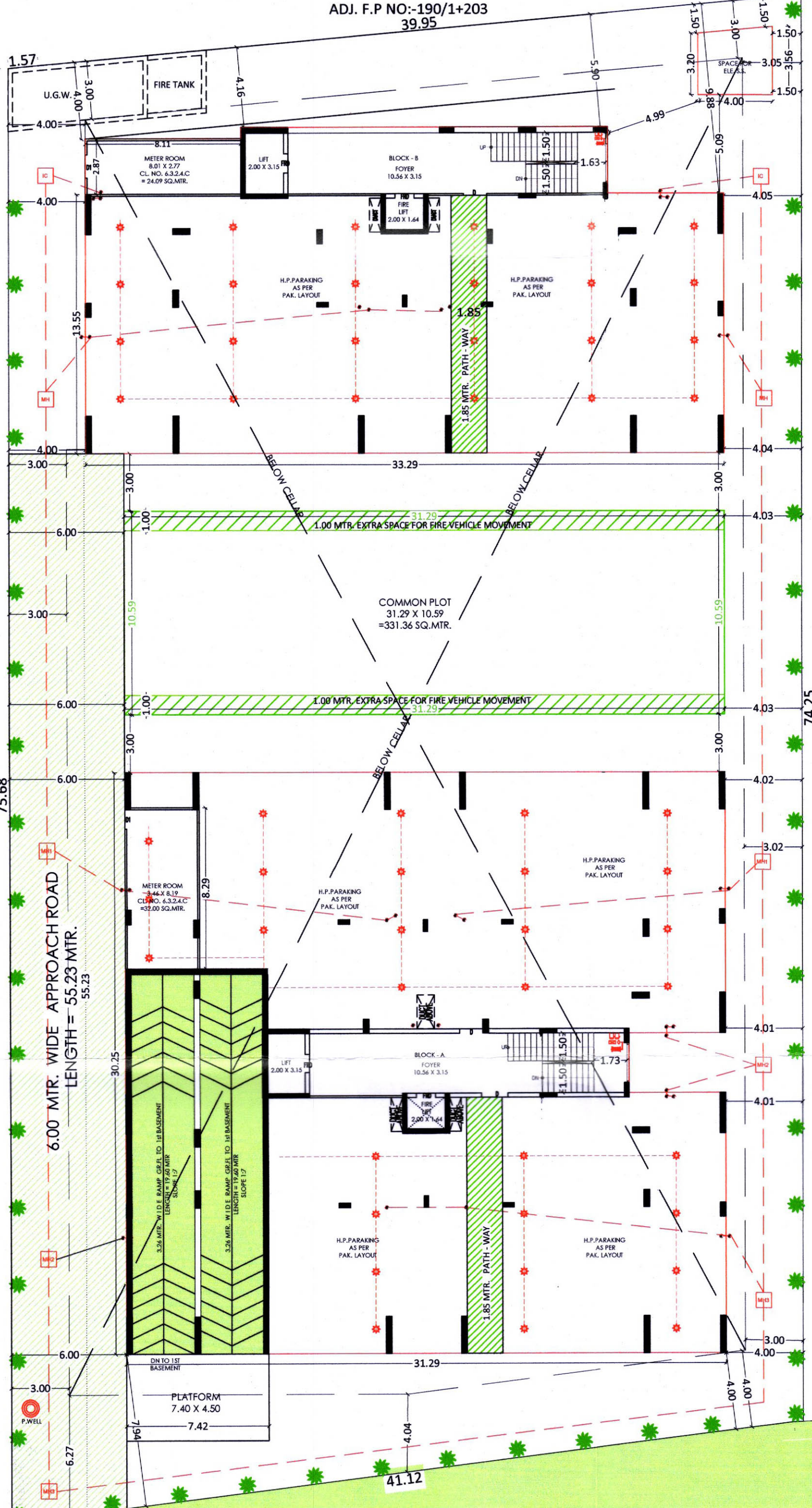
Contact No : 9925022339





ADJ. F.P NO:-259 (N.C)

ADJ. F.P NO:-188+189



6.00 MTR. WIDE APPROACH ROAD
LENGTH = 55.23 MTR.

9.00 MT. WIDE T.P.S ROAD

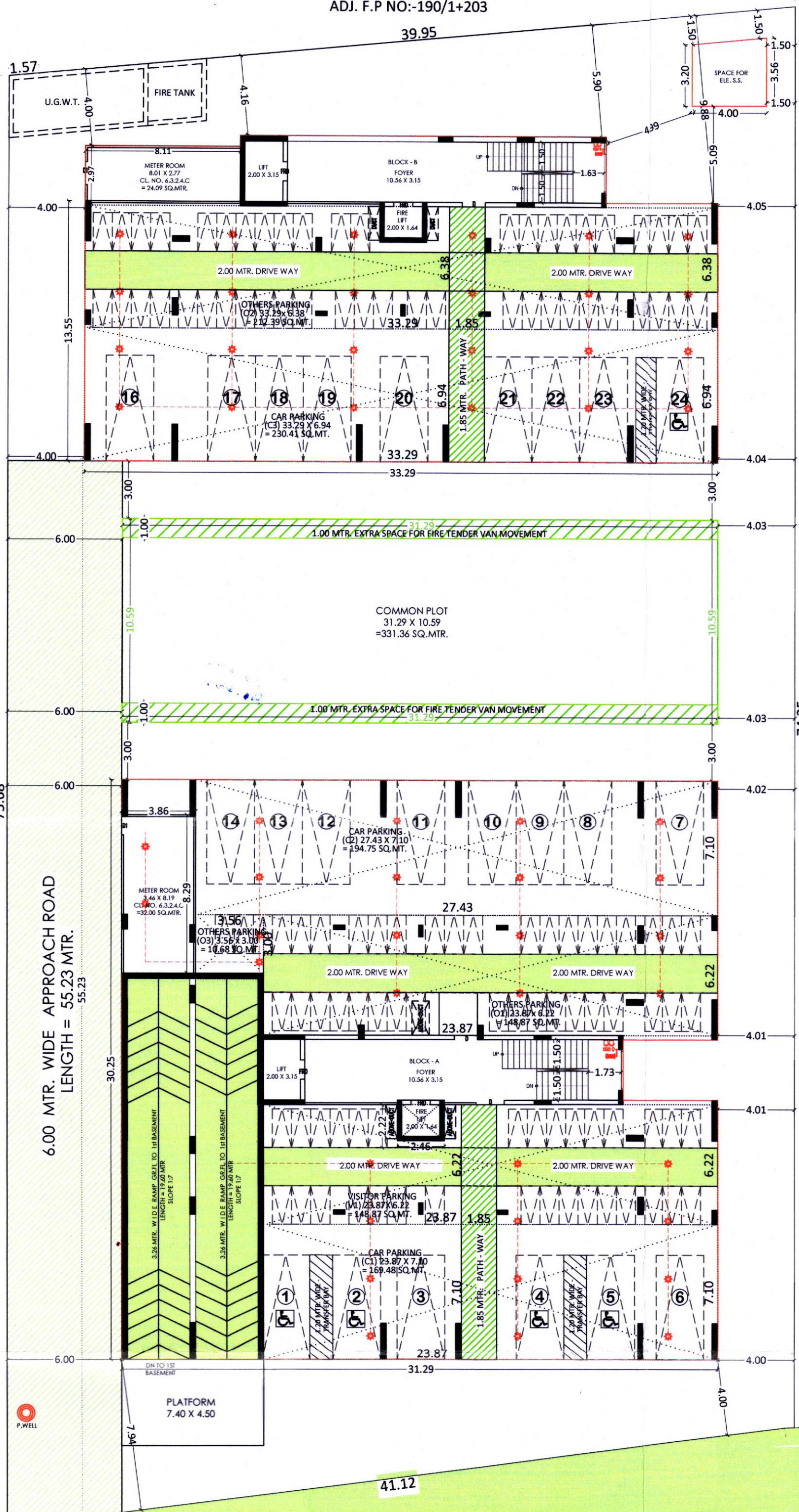
LAYOUT PLAN

SCALE : 1:2



ADJ. F.P NO:-259+263(N.C)

ADJ. F.P NO:-188+189



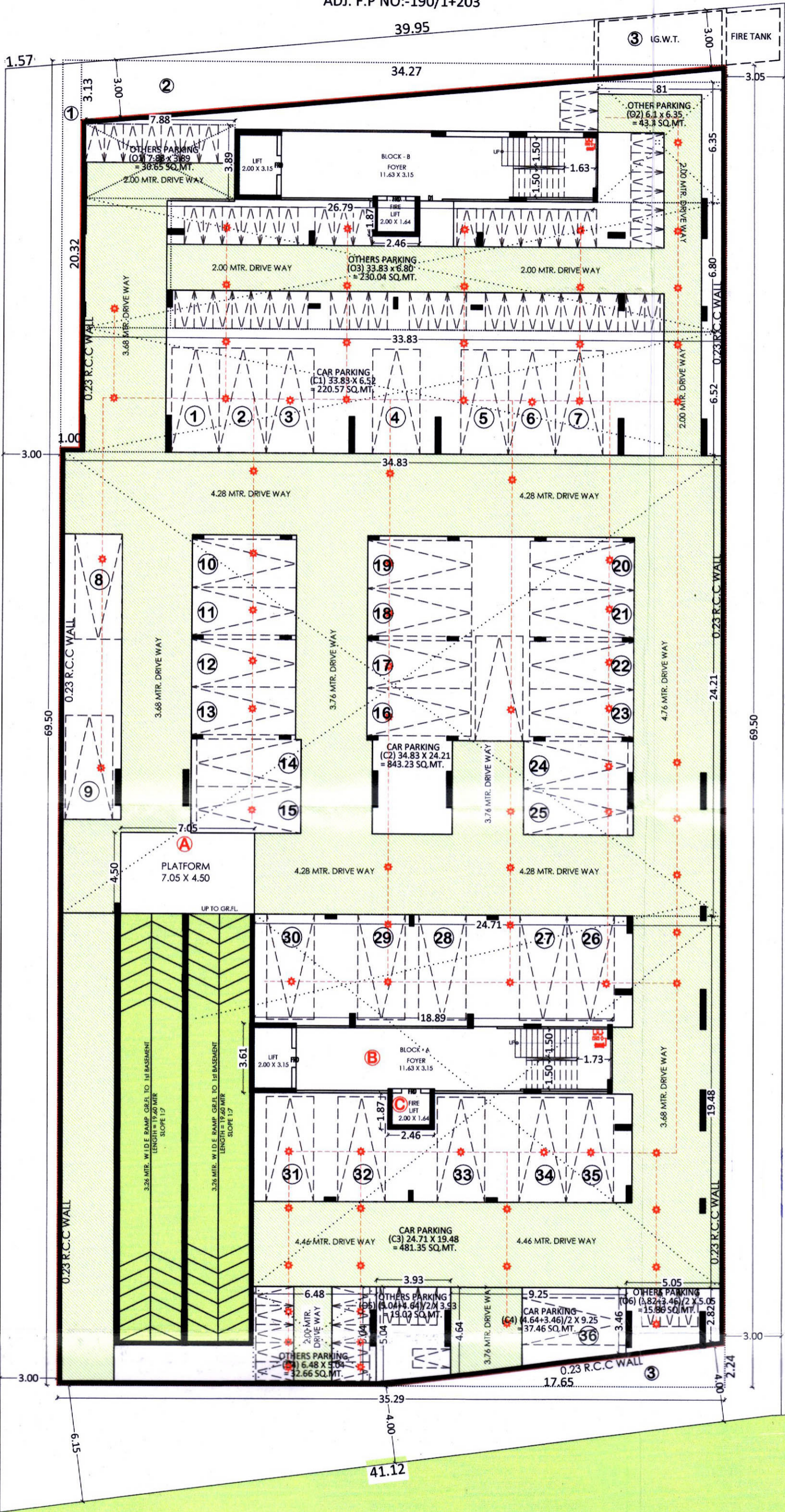
6.00 MTR. WIDE APPROACH ROAD
LENGTH = 55.23 MTR.

9.00 MT. WIDE T.P.S ROAD

PARKING LAYOUT PLAN

SCALE : 1:2

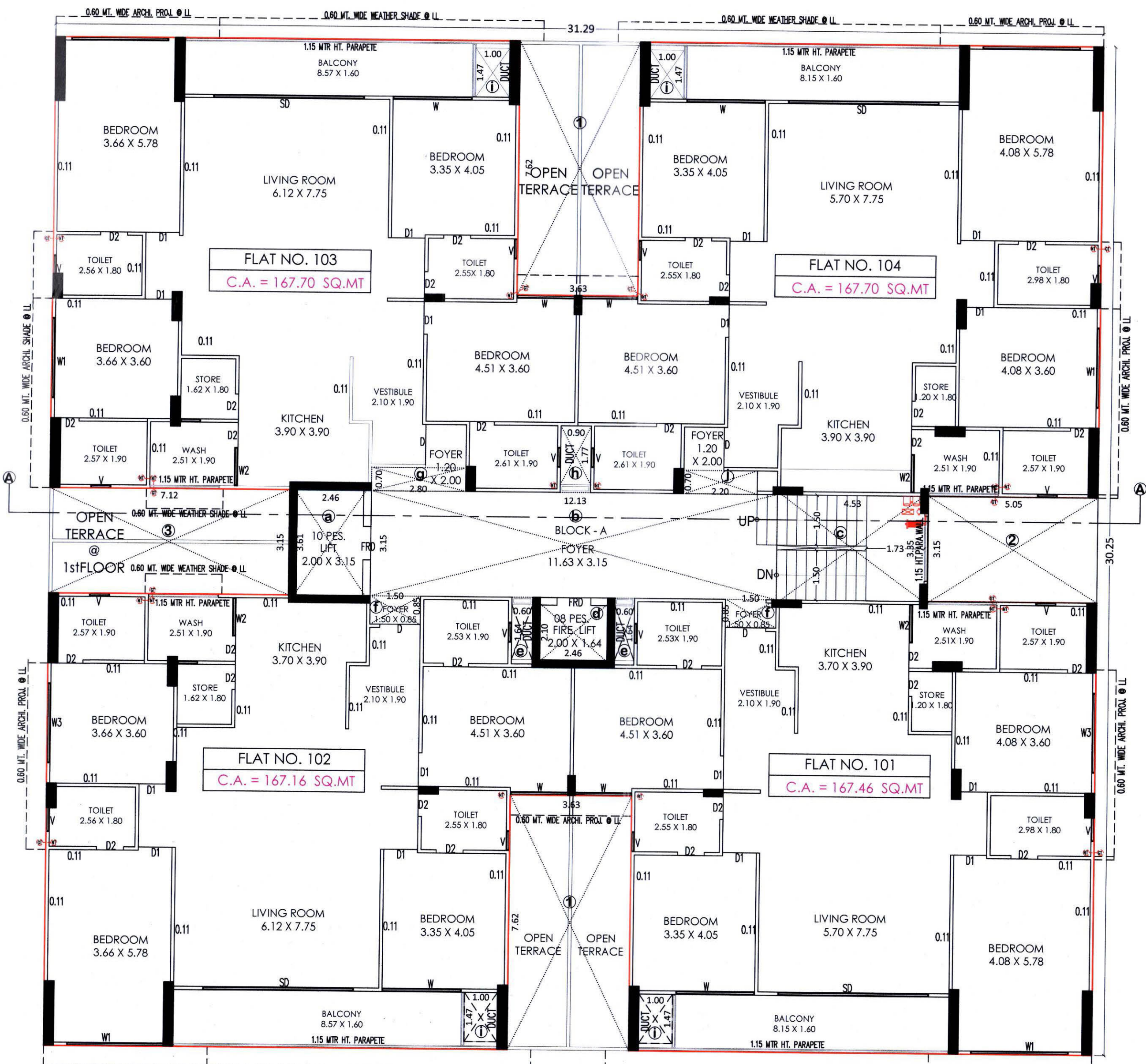
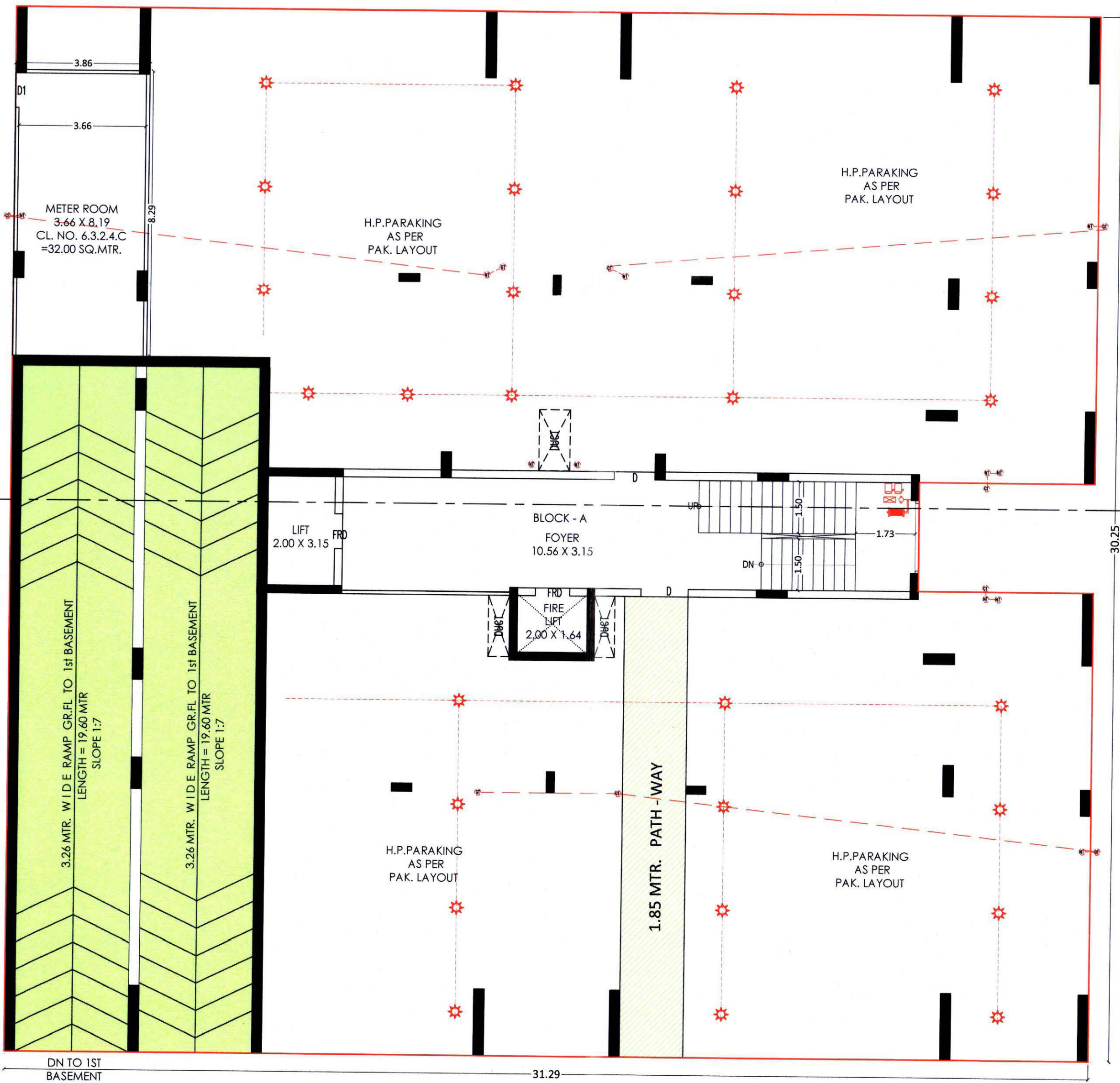
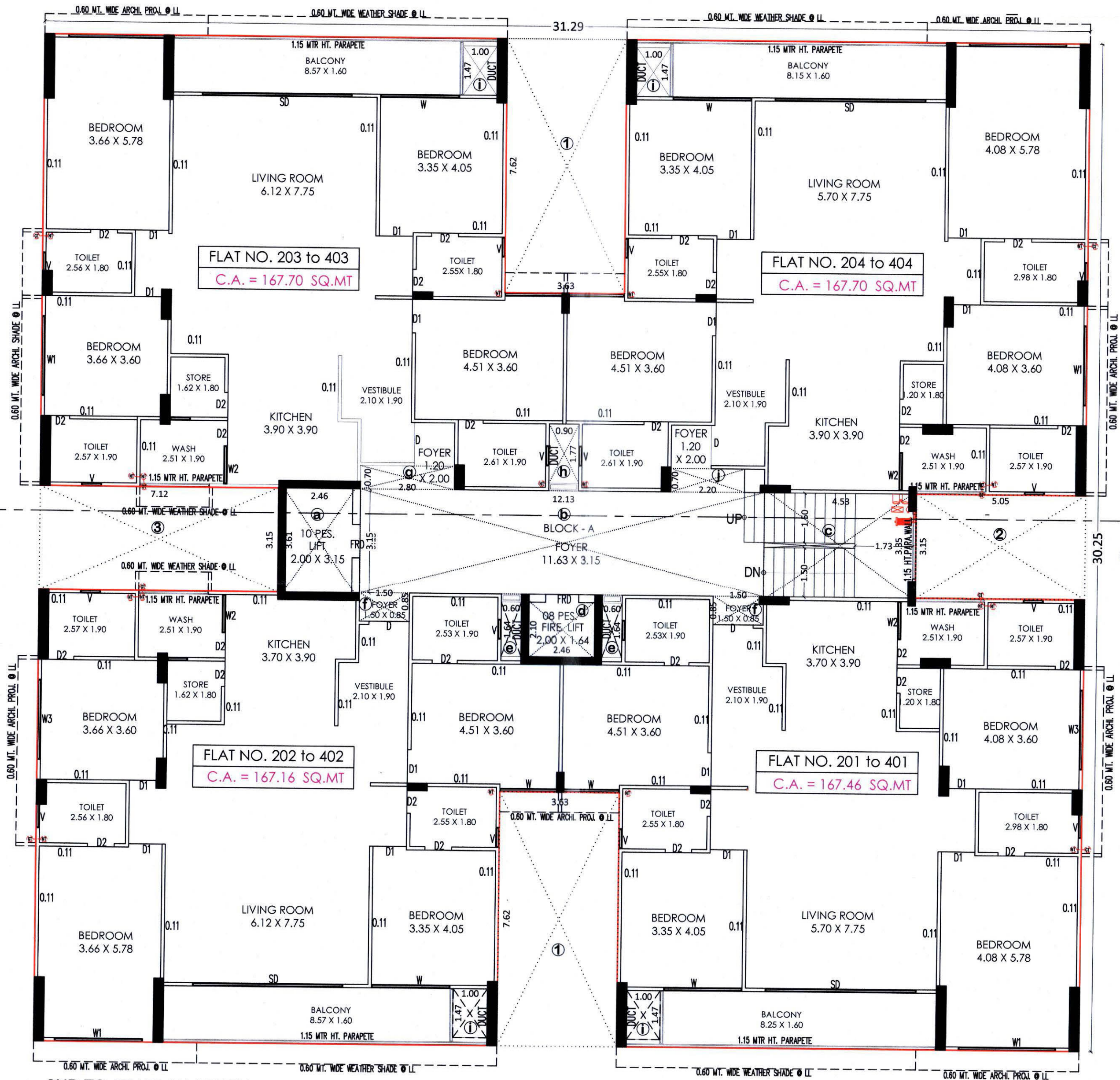


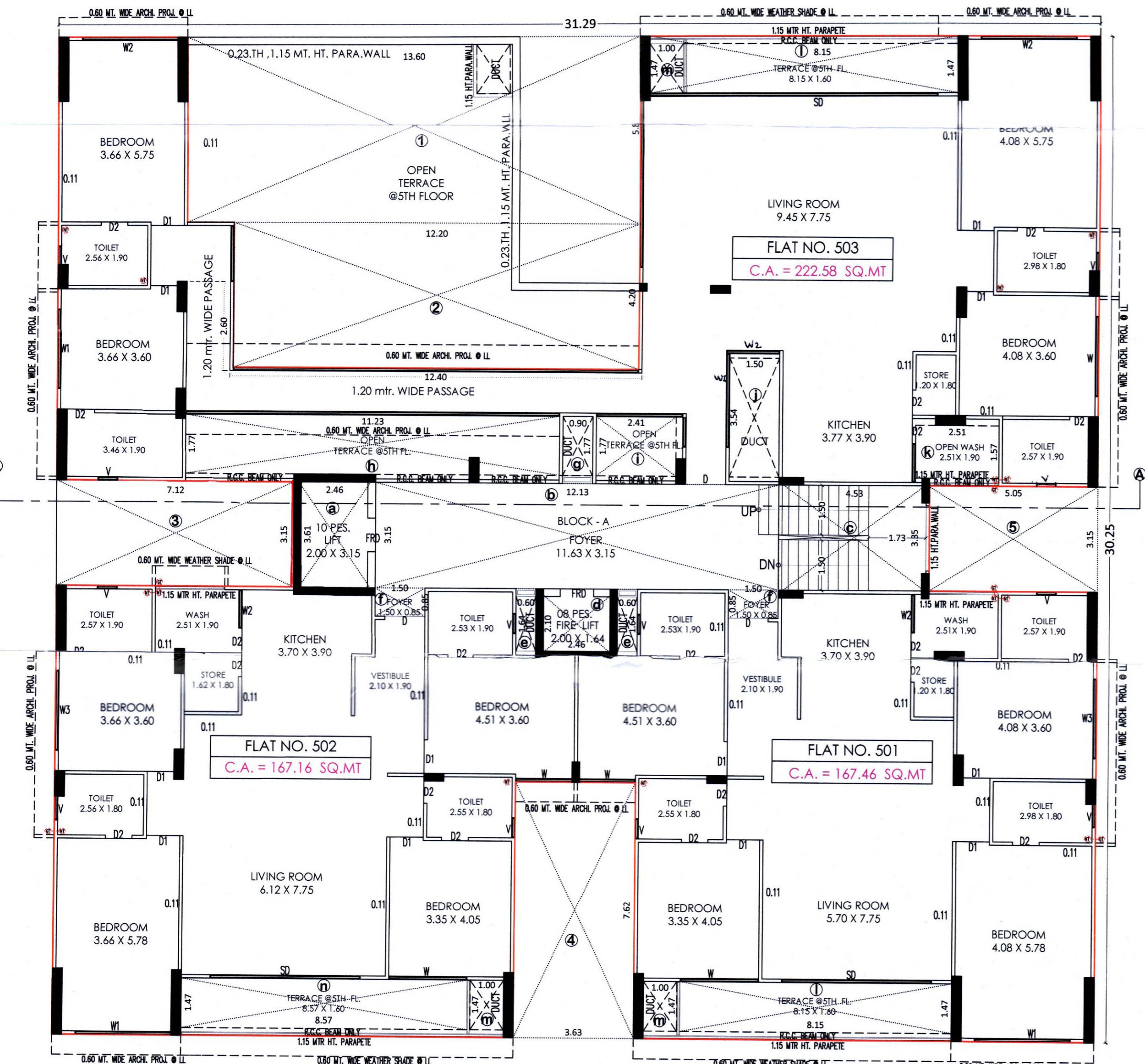


9.00 MT. WIDE RING ROAD

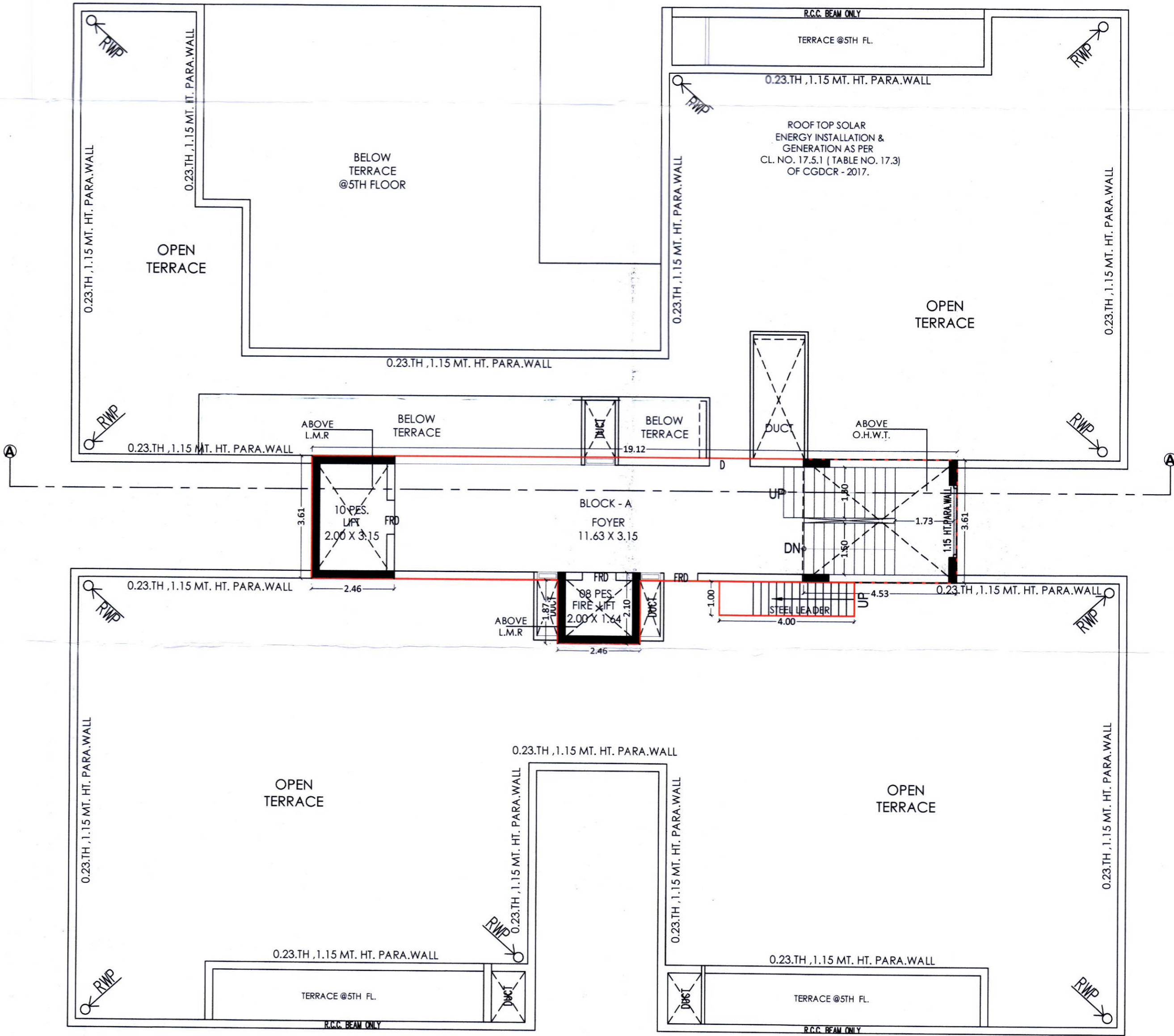
1st CELLAR PLAN
SCALE : 1:2



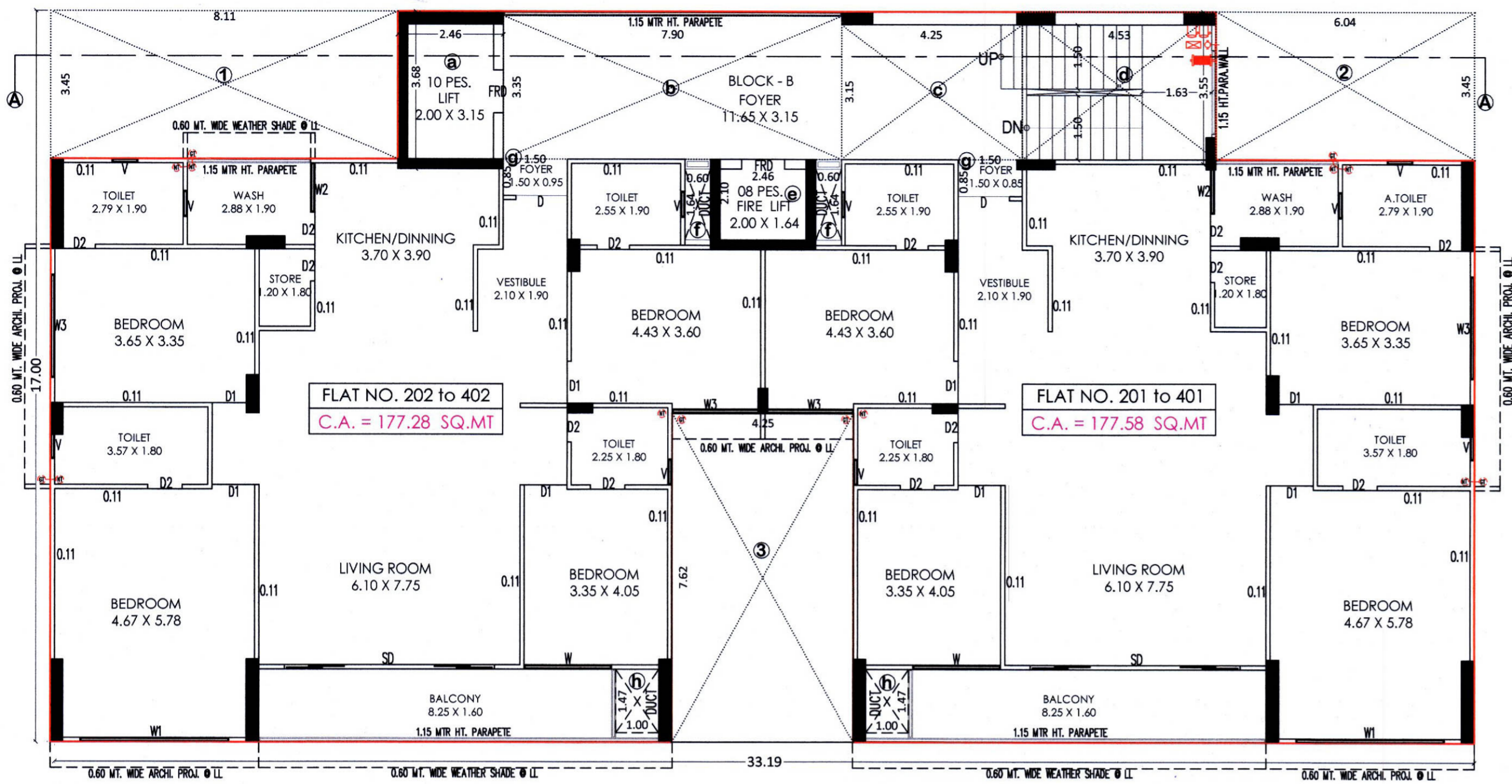




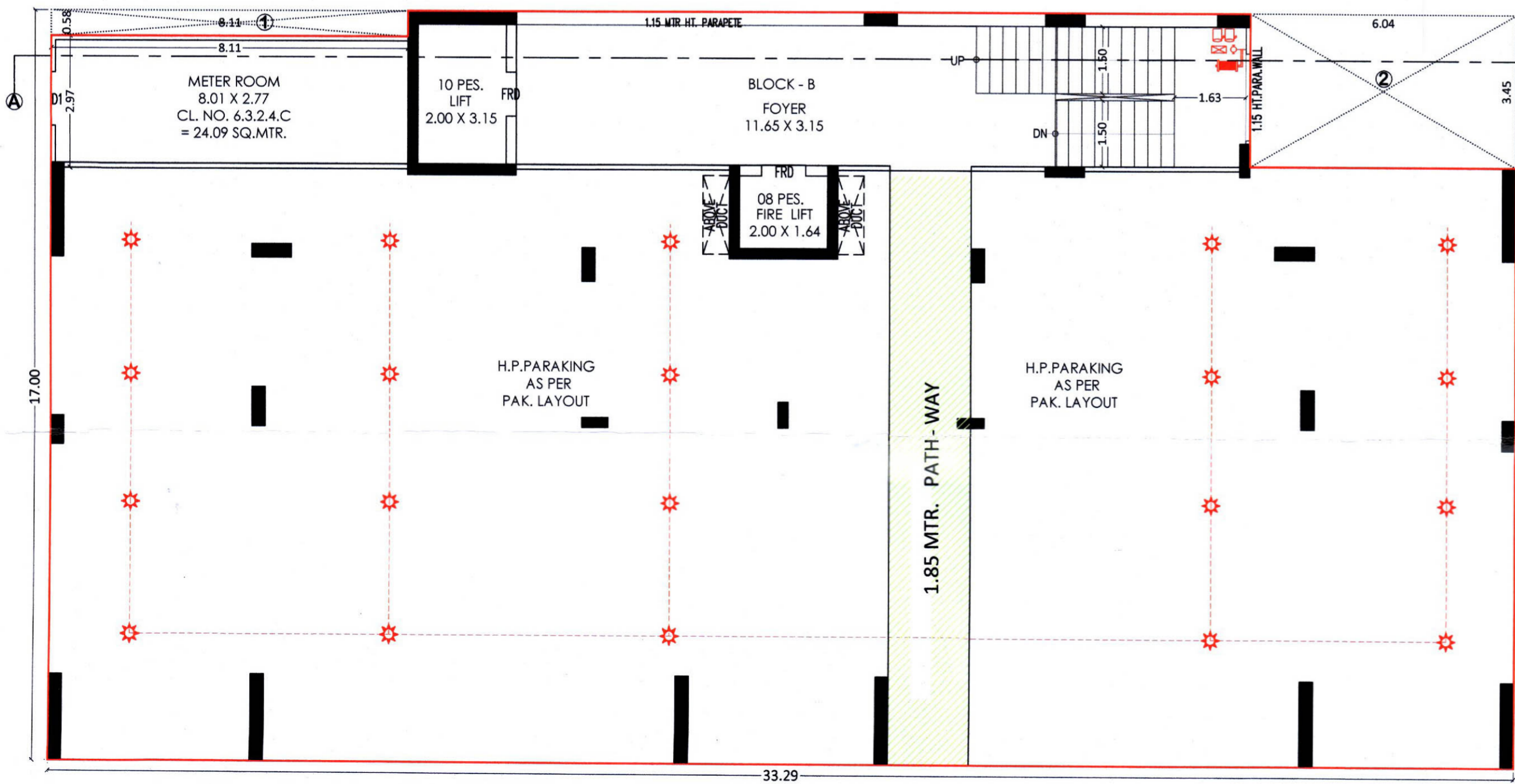
5TH FLOOR PLAN (RESI.)
BLOCK-A



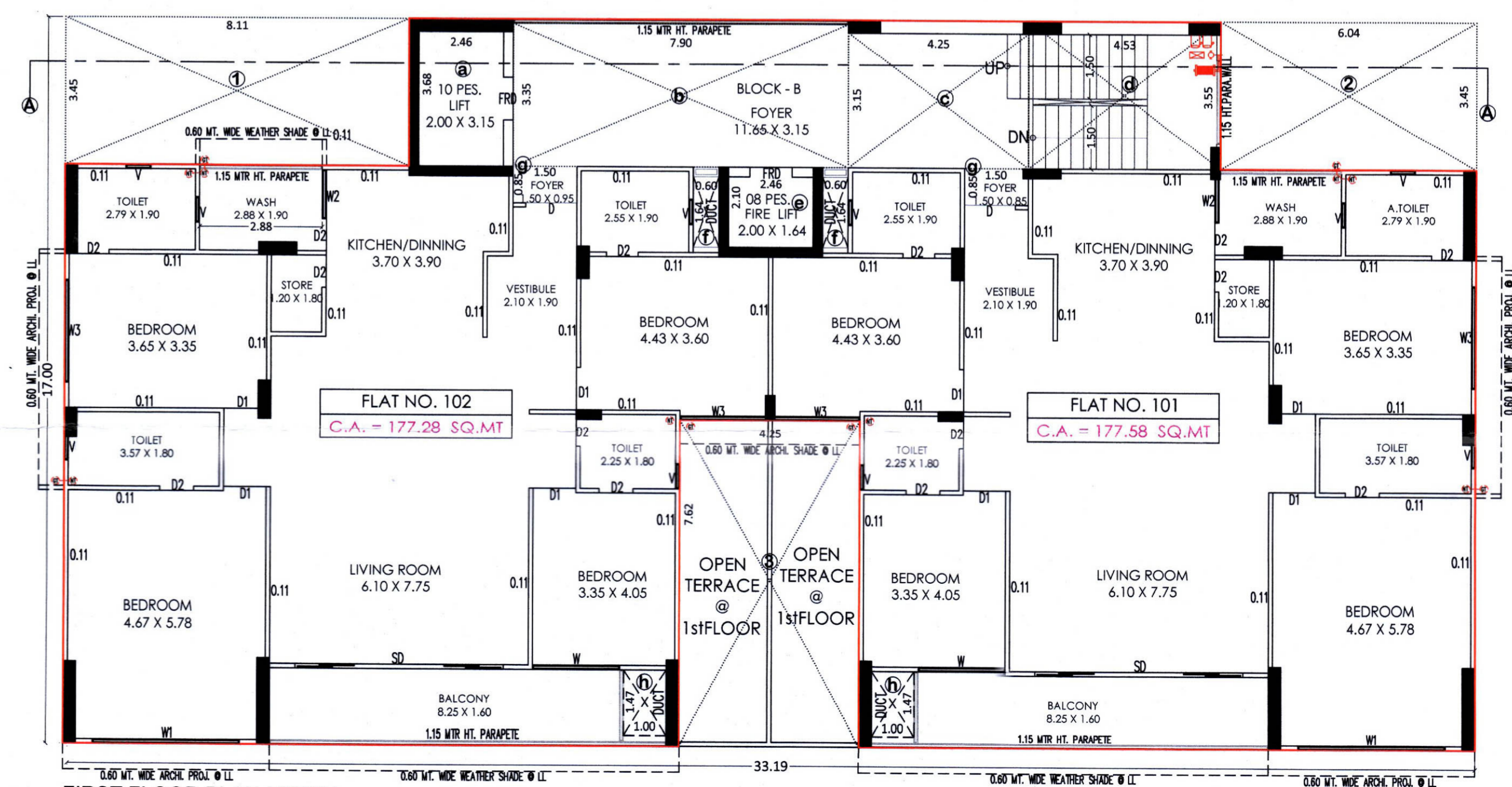
TERRACE PLAN (RESI.)
BLOCK-A



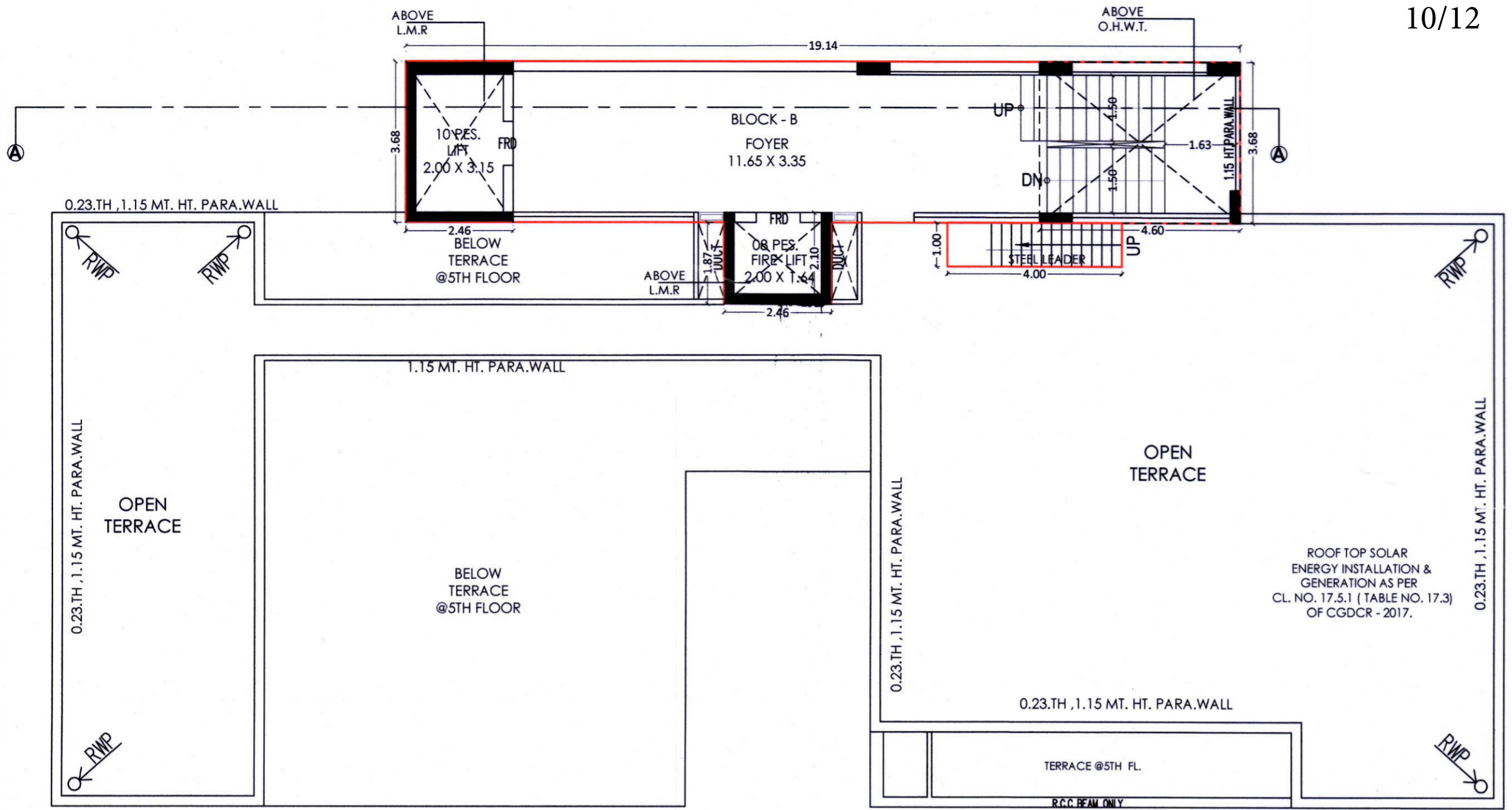
2ND TO 4TH PLAN (RESI.)
BLOCK-B



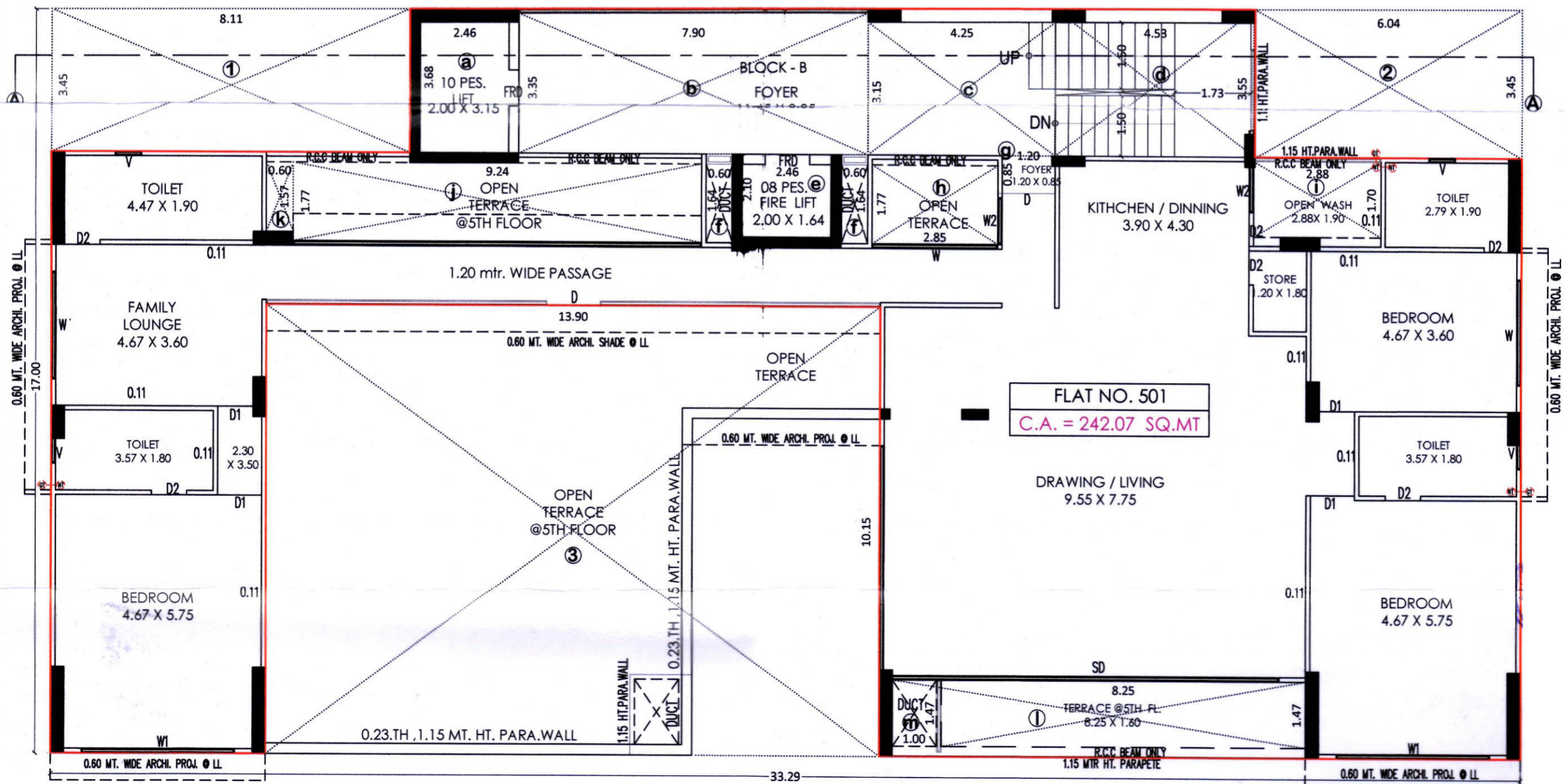
GROUND FLOOR PLAN (RESI.)
BLOCK-B



FIRST FLOOR PLAN (RESI.)
BLOCK-B



TERRACE PLAN (RESI.)
BLOCK-B



5TH FLOOR PLAN (RESI.)
BLOCK-B

SPECIFICATION

Flooring



- Italian Marble in Vestibule, Living , Dining , & Kitchen Area
- Best Quality Vitrified and / or Wooden Flooring in Bedrooms
- Attractive Floor Options in Balcony

Kitchen & Wash Area



- Polished Granite Platform With Stainless Steel Sink
- Vitrified / Glazed Tile Dedo up to Lintel Level on Kitchen Platform
- Kota /Anti skid Vitrified tiles in Wash Area With Vitrified tiles Dado
- Plumbing Provision For R O Plant & Washing Machine

Store Room



- Kota Stone Shelves in Store Room

Bathrooms



- Vitrified / Glazed / Ceramic Tiles up to Lintel Level
- Counter Basin / Wall hung Basin
- Supreme Quality CP Fittings
- Branded WC

Doors



- Main Door : Attractive Door With Polished Natural Veneer
- Designer Door With Wooden Frames & Night Latch
- Bedroom / Toilet Doors WPC / Flush Doors With Lamination & Good Quality Hardware

Windows



- Anodized High Quality Aluminium Sliding Windows
- Window Sils & Jams in Polished Stone or Granite

Electrification



- Three – Phase Concealed ISI Copper Wiring With Adequate Numbers of Points in Each Room
- Modular Switches
- MCB Distribution Panel
- Provision For TV / Cable / Telephone Point

Internal & External Wall Finish

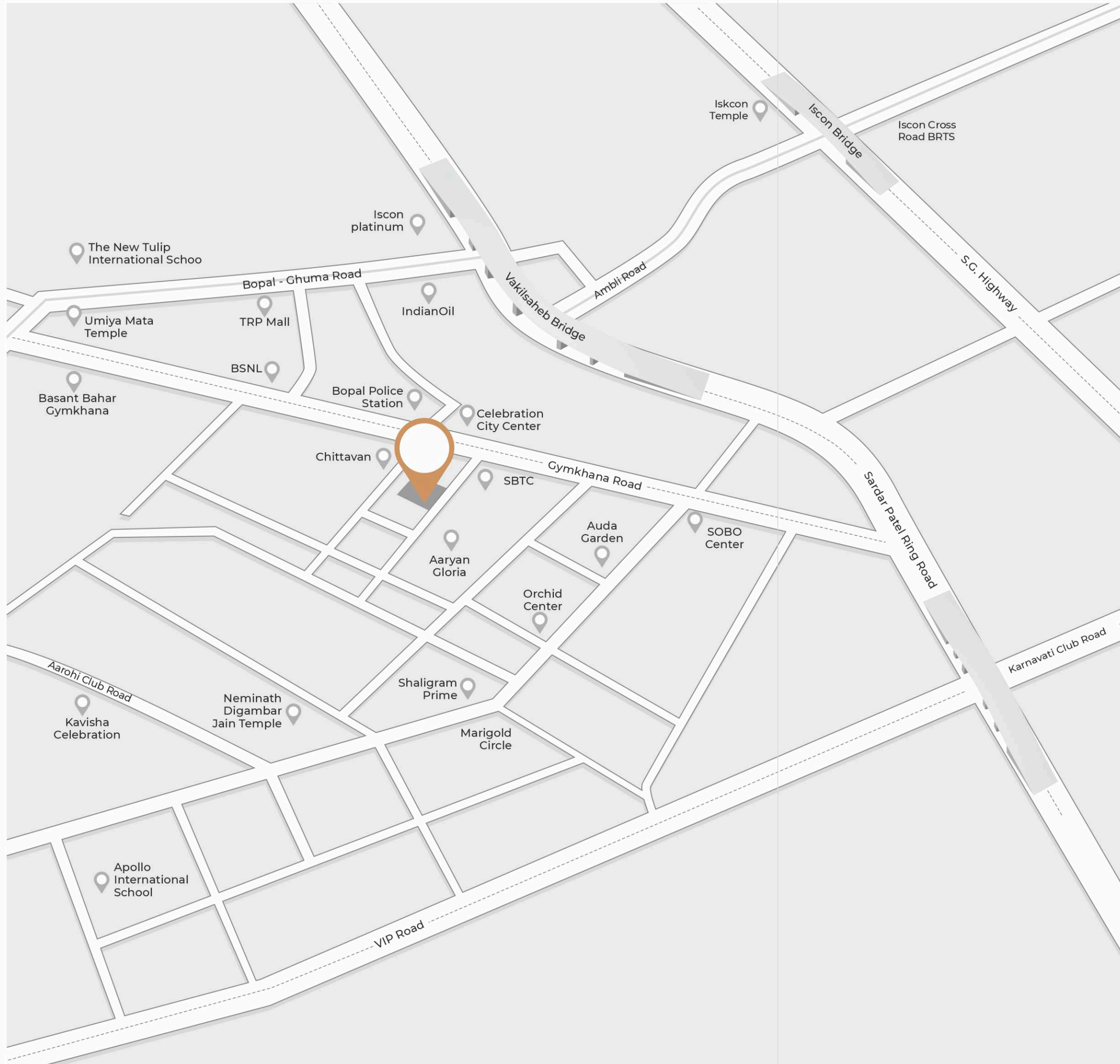


- All Internal Wall With Plaster & Puty Finish
- External Wall With Texture and acrylic Paint Finish

Plumbing



- Branded Corrosion Free & Leak Proof CPVC / UPVC Fitting



EARTH ELEANOR

Site: EARTH ELEANOR
Opp. Bopal Police Station
Nr. Aaryan Gloria , Gala Gymkhana Road
Bopal, Ahmedabad - 380058

Booking Contact:

Architect / Master Planning



Structural Engineer:



Electrical Consultant:



Plumbing Consultant

