

RERA NO. : \_\_\_\_\_  
WEBSITE : [www.gujrera.gujarat.gov.in](http://www.gujrera.gujarat.gov.in)

**KESAR HERITAGE,**  
Opp. 108 GVK Emergency Center,  
Nr. Shalby Hospital, Naroda, Ahmedabad.

DEVELOPERS  
**SHREENATH**  
DEVELOPERS

ARCHITECT  




**3 BHK Ultra Luxurious Living**

**KESAR HERITAGE,**  
Opp. 108 GVK Emergency Center,  
Nr. Shalby Hospital, Naroda, Ahmedabad.

DEVELOPERS  
**SHREENATH**  
DEVELOPERS

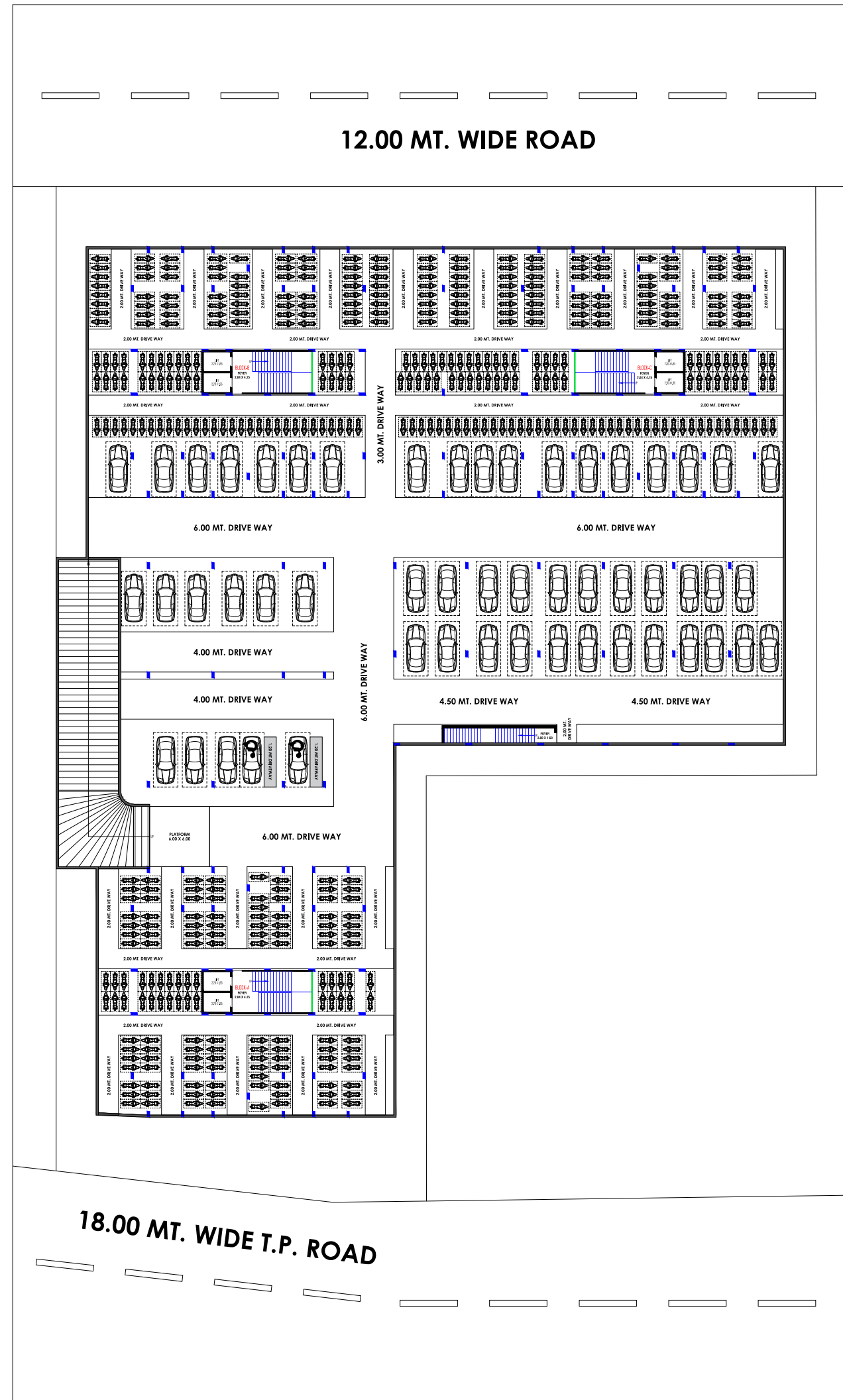
ARCHITECT  



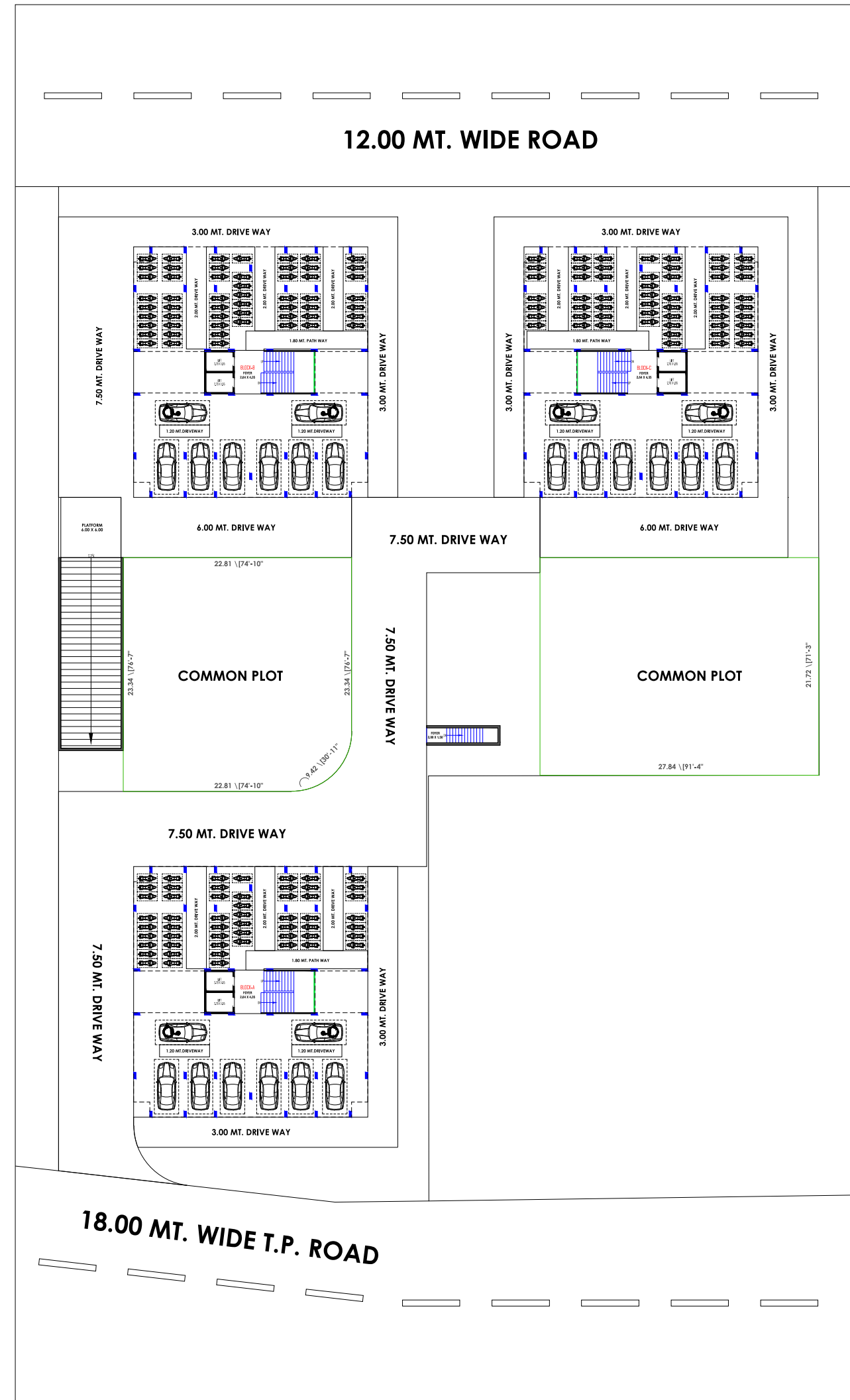




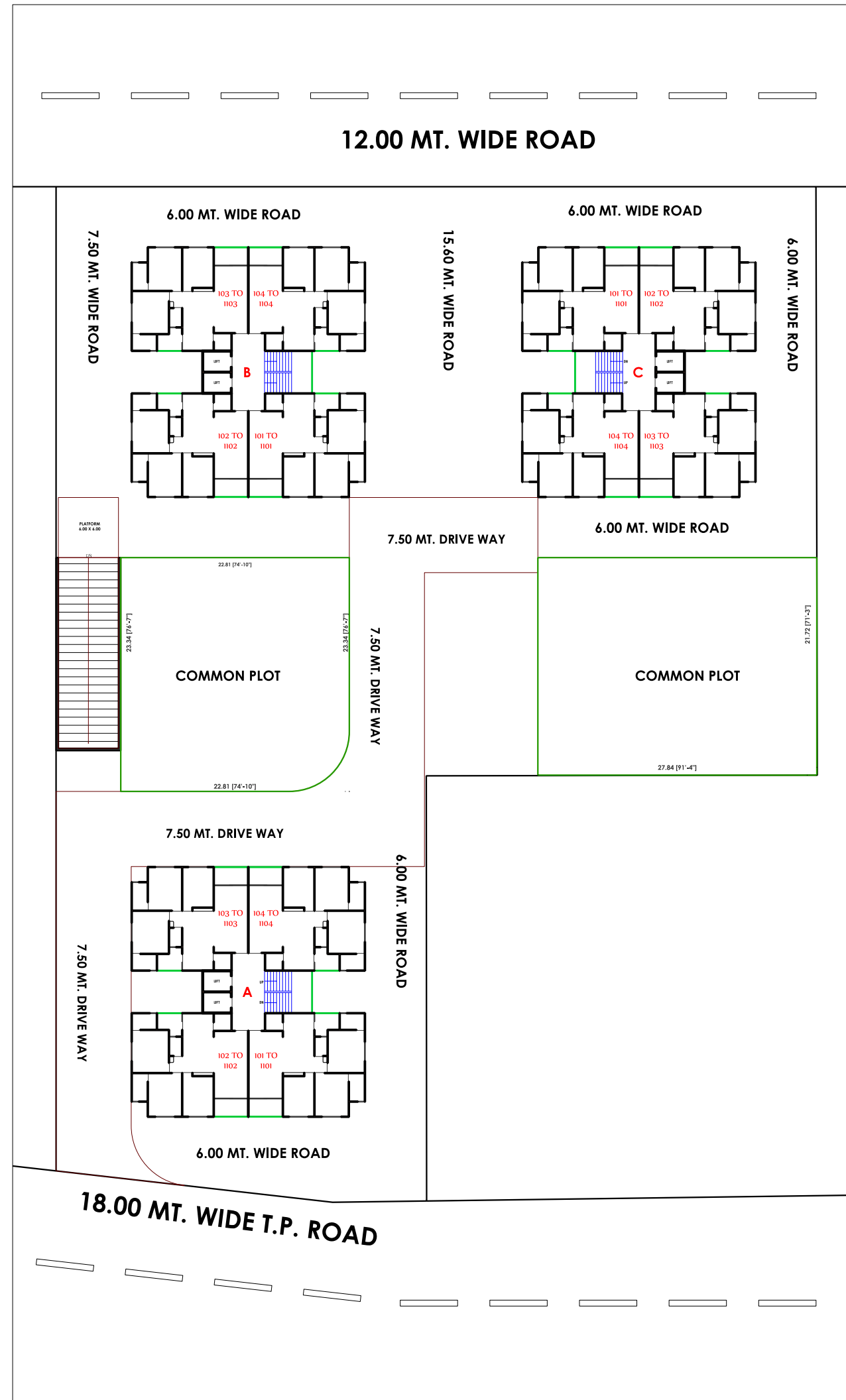

**BASEMENT PLAN**



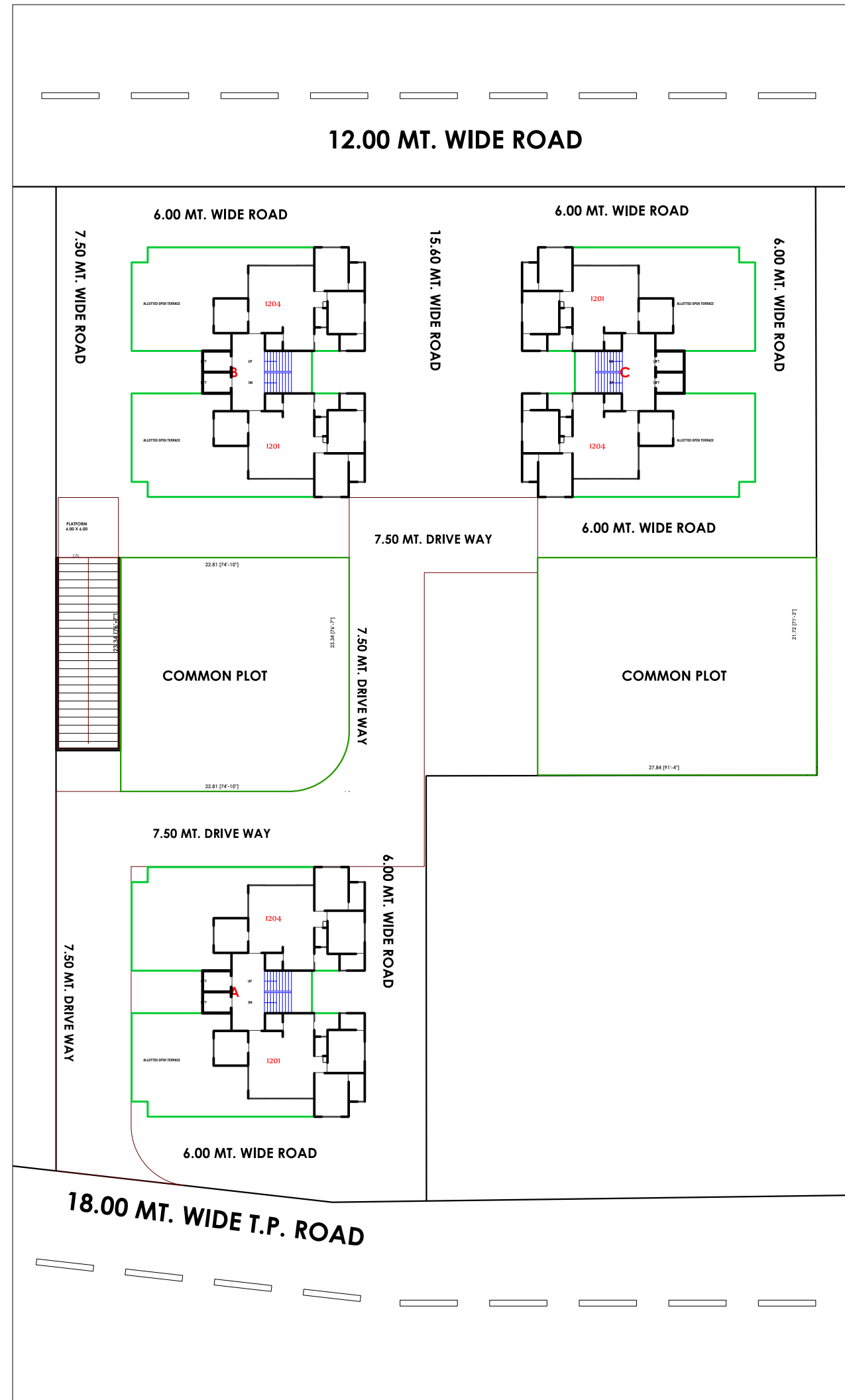
**GROUND FLOOR PLAN**



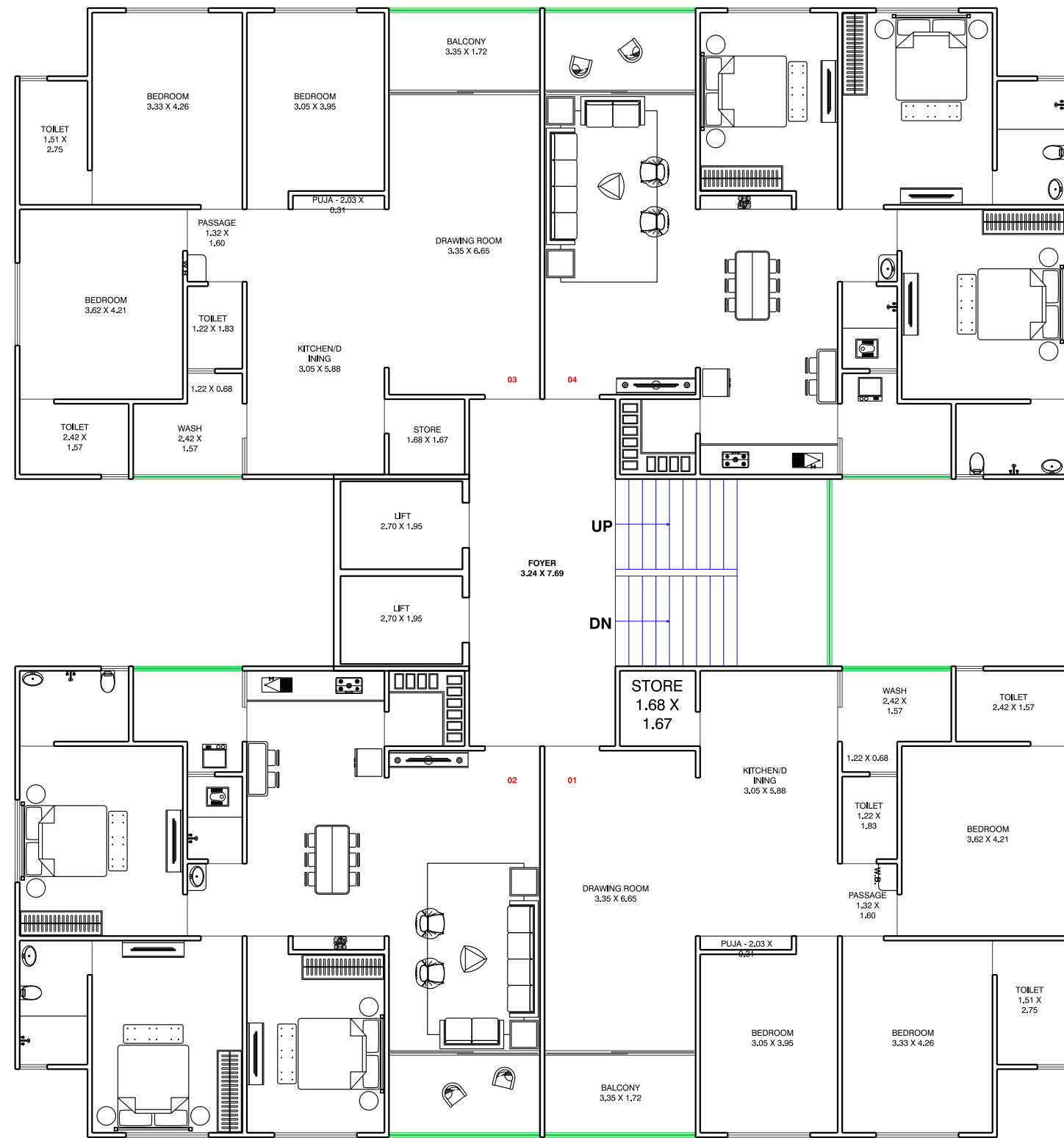
TYPICAL LAYOUT PLAN ( 1ST TO 11TH FL.)



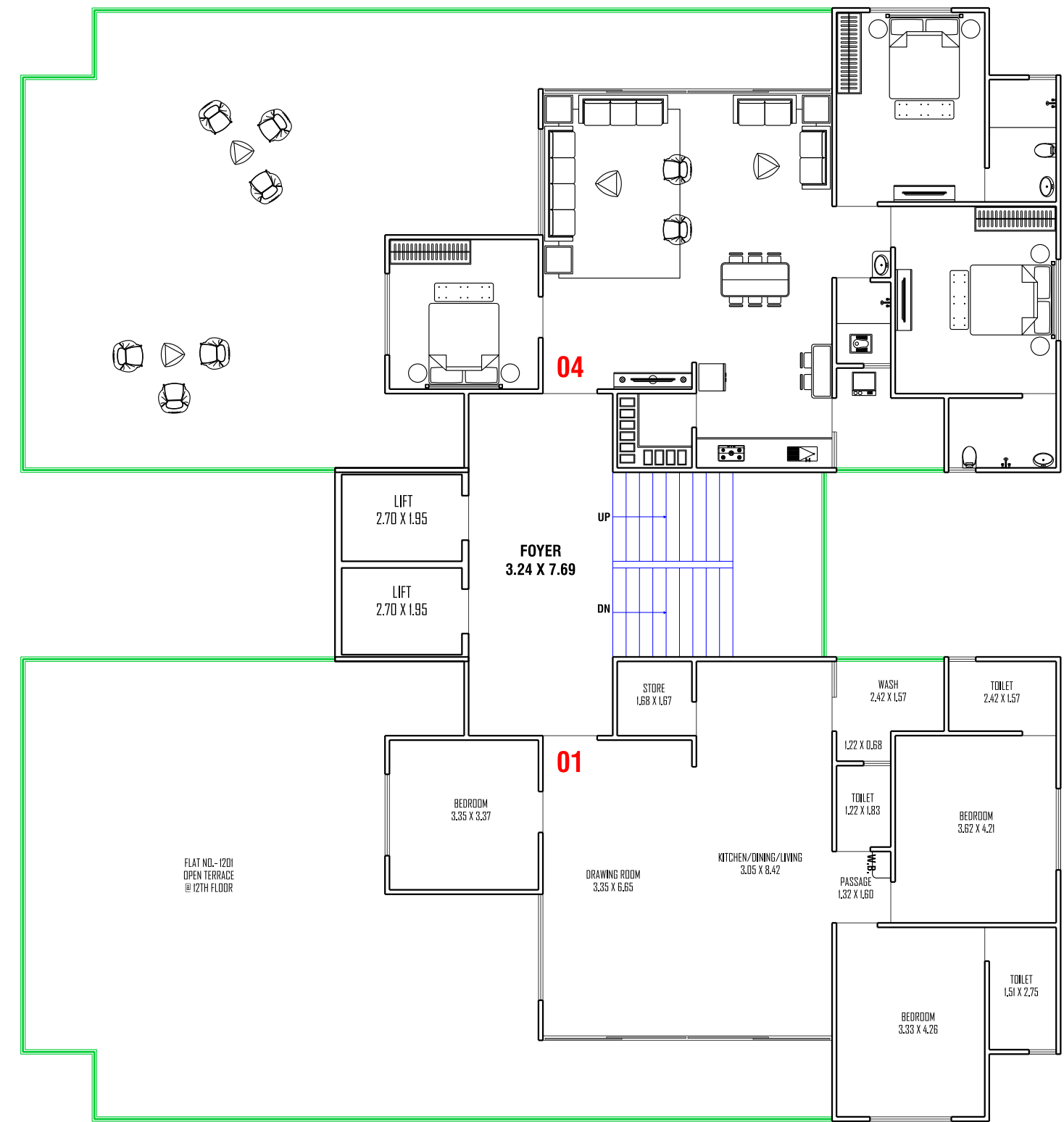
12TH FLOOR PLAN



TYPICAL FLOOR PLAN ( 1ST TO 11TH )



12TH FLOOR PLAN





## SPECIFICATION

### ELEVATION :

- As per Architect's design with a Superior finish

### STRUCTURE :

- Earthquake resistant load bearing structure

### WALL FINISH :

- Internal : Mala plaster with putty finish
- External : Double coat sand face plaster with weather resistant acrylic paint

### FLOORING :

- Vitrified flooring in drawing room, dining & kitchen
- Vitrified flooring double charged in all bedroom
- Lintel level glazed tiles in Bathrooms

### PLUMBING :

- PVC, UPVC pipe and plumbing accessories with company warranty over head PVC tank, electric, gezeer point all bathroom.

### KITCHEN :

- Premium quality granite platform
- Branded S.S. Sink
- Glazed tiles upto lintel level

### STAIRS :

- Good quality granite stair-steps with decorative railing

### DOORS :

- Decorative main door
- Internal flush door

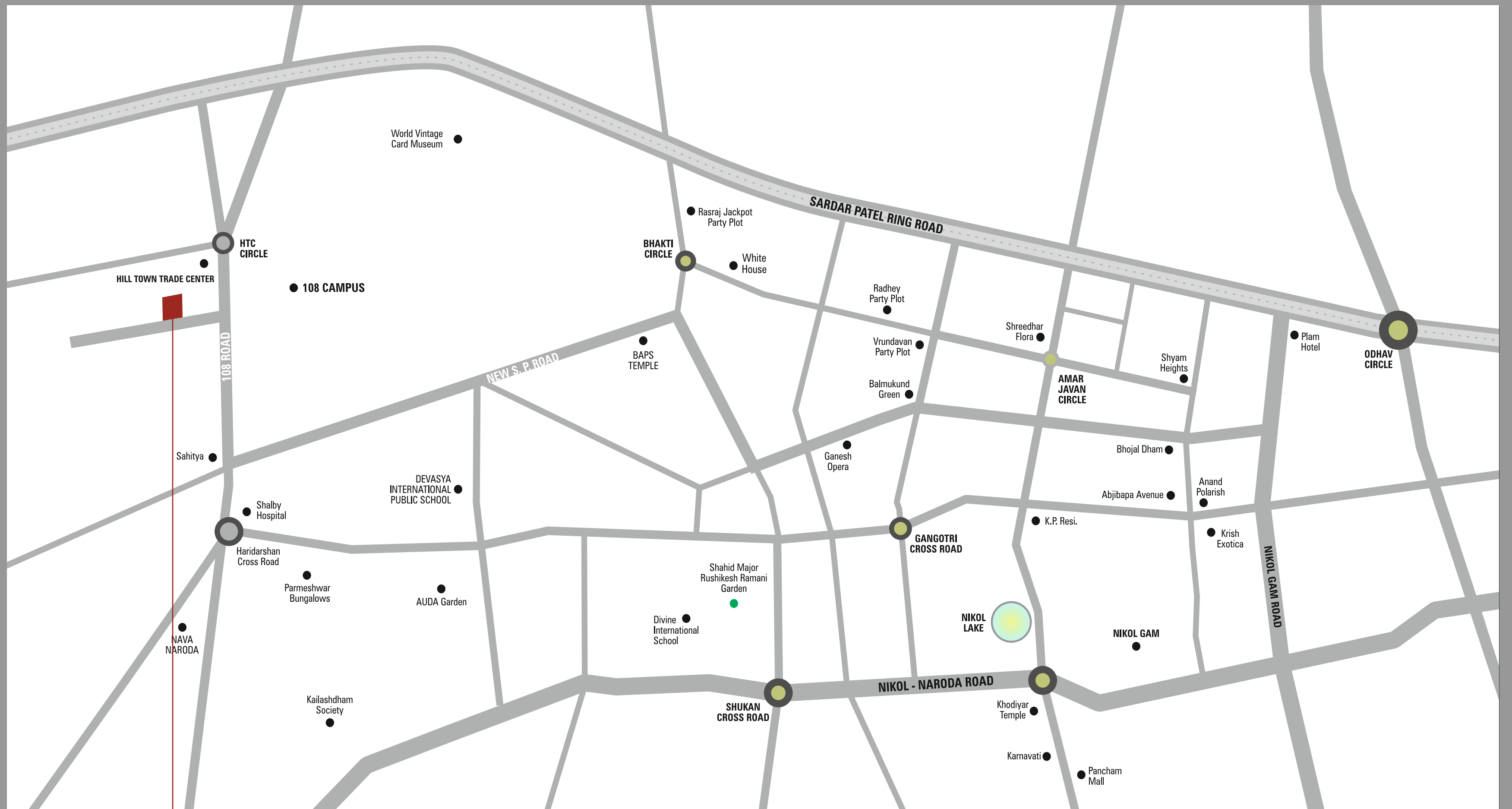
### ELECTRIFICATION :

- Concealed ISI copper wiring with modular switches
- Adequate number of points as per architect's design

### WATER PROOFING :

- Water proofing of standard materials in all bathrooms and terrace.





**3 BHK Ultra Luxurious Living**

SCAN FOR LOCATION



**KESAR HERITAGE,**  
Opp. 108 GVK Emergency Center,  
Nr. Shalby Hospital, Naroda, Ahmedabad.

**SHREENATH  
DEVELOPERS**

