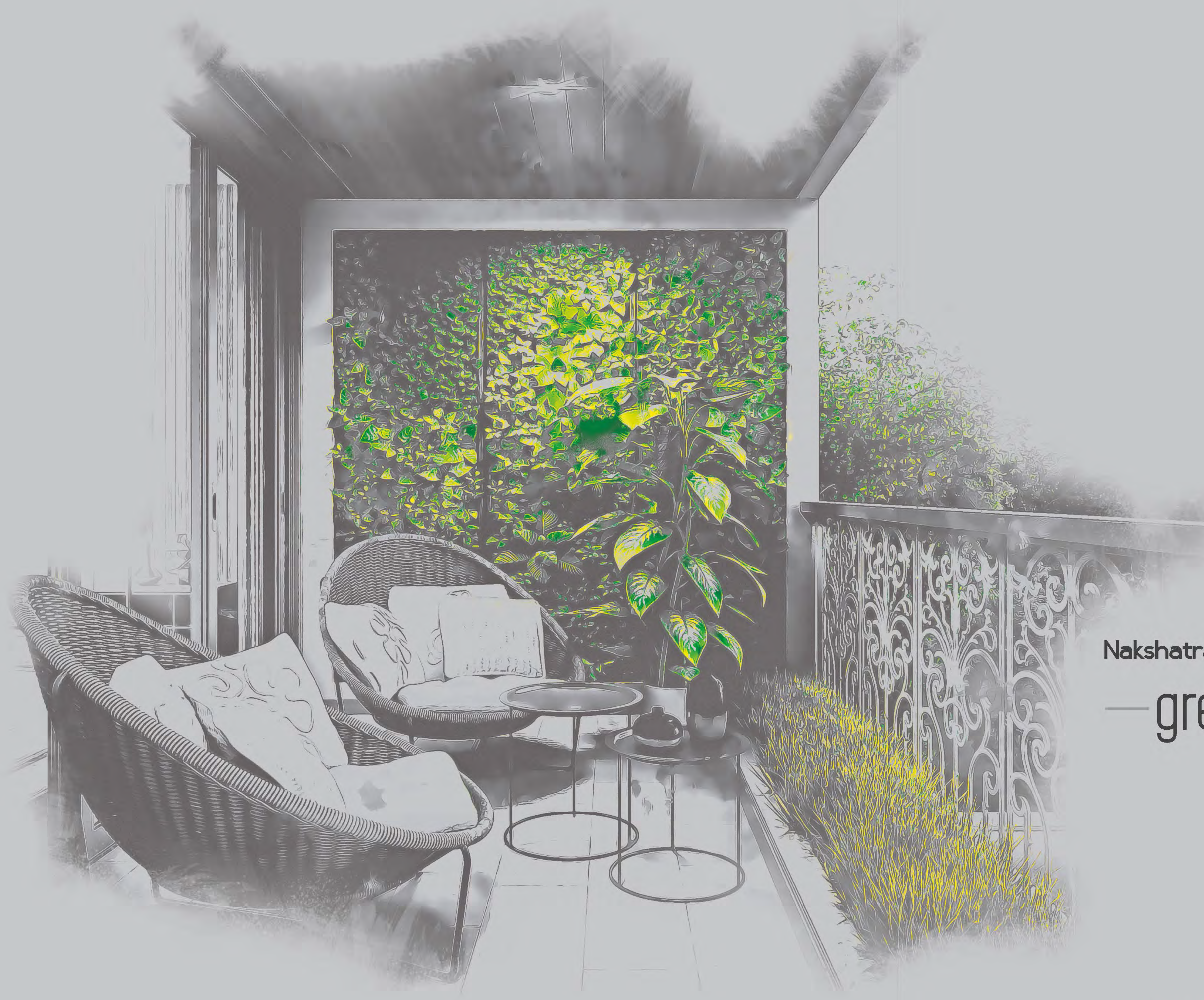




Nakshatra
— Greens —



4 BHK
— ULTRA MODERN LIVING —

Nakshatra Greens Endow your homes with grandeur and
— greens in equal measure —

Developers :



INFRACON

Nakshatra Greens is a residential project located at Jain society,
Paldi. The project presents a host of brilliant 4BHK apartments
that define class and leisure.



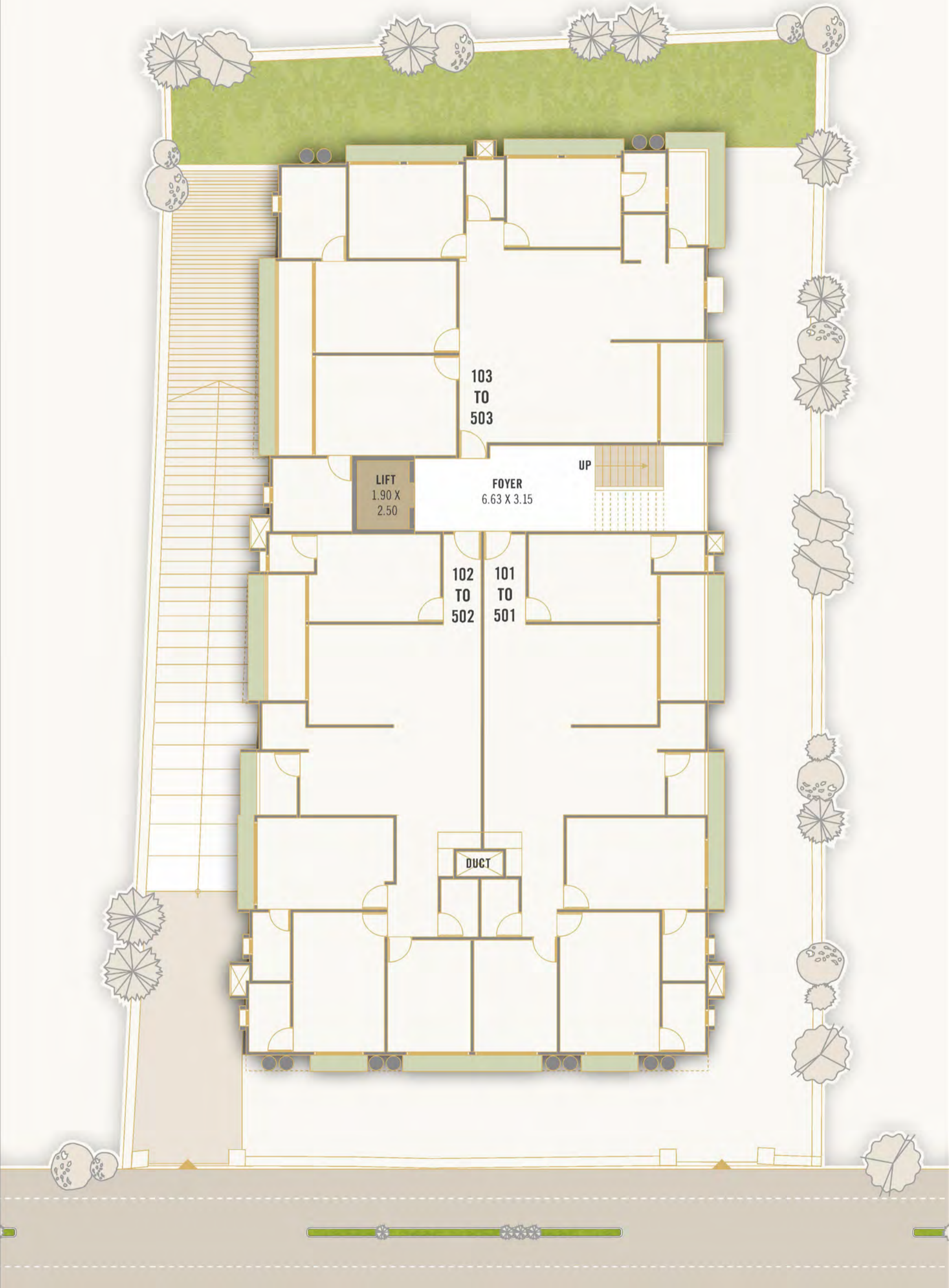


RV

NAKSHATRA
GREENS



TYPICAL — FLOOR PLAN —



4 BHK

—UNIT PLAN—



TYPE - 1



TYPE - 2

4 BHK

—UNIT PLAN—





4 BHK
— UNIT PLAN —



TYPE - 3



Incorporating amenities that actually care for you



Entrance Gate



CCTV Camera



24 X 7 Security



Sitting Area



A/C Gymnasium



Street Light



Pick Up Zone



Fire Safety



Open Air Theatre



Indoor & Outdoor
Kids Play Area



Lush Green
Landscape



Ground Floor
& Basement With Multi
Level Car Parking Provision

We do not dress up the abodes with empty aesthetics but with function and utility too. Let this home be the perfect space for you to flaunt, unwind, rest, rejuvenate, and shine, always!

Nakshatra
Greens

Specification

STRUCTURE		Earthquake resistant RCC frame structure.
FLOORING		Drawing/dining/kitchen : Italian marble flooring. Bedroom : 600 x 1200 - Vitrified tiles. Platform : Quartz platform with Stainless steel sink, tile dado up to lintel level.
DOOR & WINDOWS		DOOR : Main Door : Decorative main door with polished natural veneer and branded digital lock All other doors are flush doors with S.S fitting. WINDOWS : Anodized Aluminum Domal section.
PAINT		Internal : Putty finish with primer. External : Heritage or texture and GRC cladding as per elevation with 100% Acrylic paint.
BATHROOMS & PLUMBING		BATHROOMS : Vitrified tiles cladding till top. Western concept designed toilets : kohler or equivalent plumbing with sanitary fittings. Provision of water geyser in all toilets. PLUMBING : Plumbing CPVC/UPVC pipe with Astral or equivalent. Master cock in each toilet. Tile insert N.T - for better aesthetic. Borewell for sufficient water supply along with municipal water supply.
ELECTRIFICATION		3 - phase line-concealed electrification with ISI marked cable/copper wire. T.V/Telephone point in each room. Schinder or equivalent switches in all room. MCB/ELCB and D.B of schinder or equivalent.
ELEVATOR		OTIS or equivalent elevator

Salient Features :

- Electric car charging point
- Adani gas connection
- Three tire VDP system - security gate/foyer/home
- CCTV surveillance in common area
- Fire safety system

TERMS AND CONDITIONS :

All right are reserved by the developers to make any changes in plan, elevations and other details which will be binding to all the members. I In order to maintain the aesthetics of the apartments at a very high level, installation of AC units will be permitted at the designated spots only. I Encroachment in any form outside the defined units shall not be allowed. I All dimensions shown in the plans are approximat, average unfinished and subject to variations. I All the payments shall be in favour of R V INFRACON. I This brochure is not a legal document and just for presentation purpose only. I Changes/Alteration of any nature including the elevation, exteriors scheme of the apartment or any other changes affecting the overall design concept and outlook of the scheme are strictly not permitted during or after the completion of the project.

Location map



Near Location By

Metro Stations	150 Mt	Chintamani Derasar	120 Mt
Jalaram Mandir	150 Mt	Devarchan Guru Mandir	100 Mt
Kutchi Bhavan	100 Mt	Derasar	80 Mt



NAKSHATRA GREENS,
43, Jain Society, Behind Kutchi Bhavan
Paldi, Ahmedabad - 380006.

BOOKING CONTACT :
+91 93750 34206 | +91 84690 77022

DEVELOPERS :

INFRACON

**ARCHITECT STR ENG &
PROJECT MANAGEMENT CONSULTANTS :**

SHILP SHREE