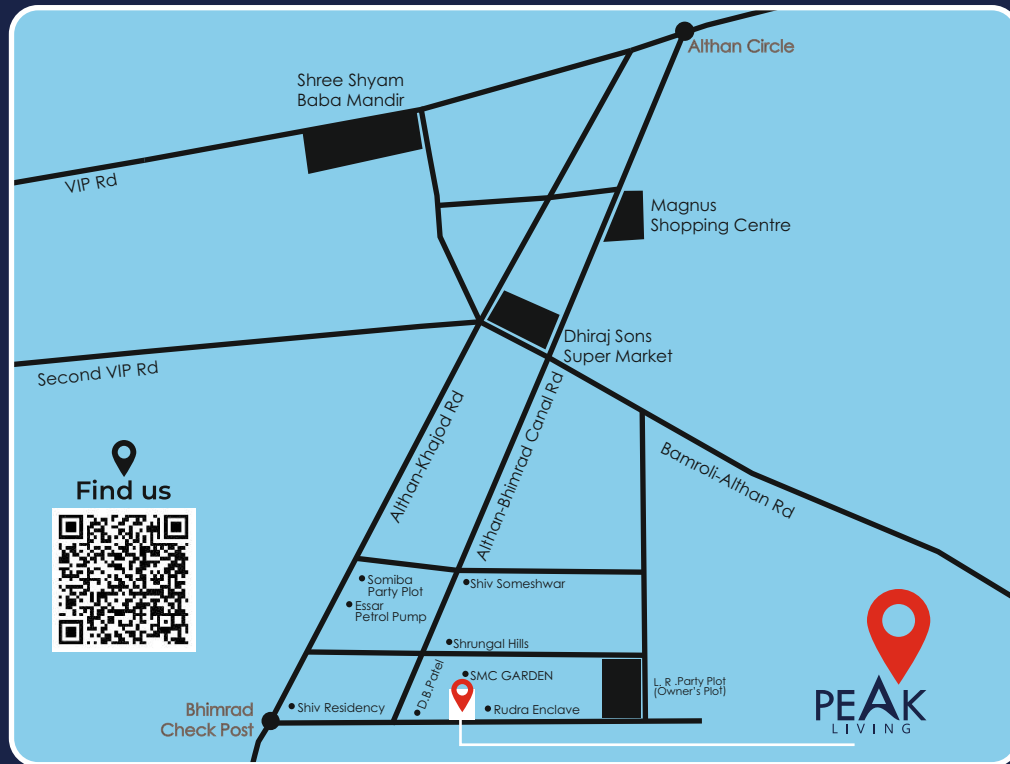


## LOCATION



**STRUCTURE BY**  
Jalil A. Shaikh



**ARCHITECTURE**  
Shikha Patel



**VASTU CONSULTANT**  
Umesh Gheewala

## NOTES :

- Legal/Documents/Stamp Duty charges extra as applicable to be borne by members.
- Applicable government taxes including GST to be borne by members.
- Deposits for all services to be borne by members.
- Society maintenance charges to be borne by members.
- External and internal changes strictly not allowed.
- The brochure does not form part of an offer contract or agreement.
- All plans/drawings/features/specifications are subject to approval of respective authorities.
- All rendering /floor plans/pictures depiction of building and maps are artists conception and not actual depiction of building.

## CONTACT US

+91 98251 05254 | +91 99786 05289 | +91 99137 51900  
Althan Bhimrad Canal Road, Bhimrad, Surat. 395007

# PEAK LIVING

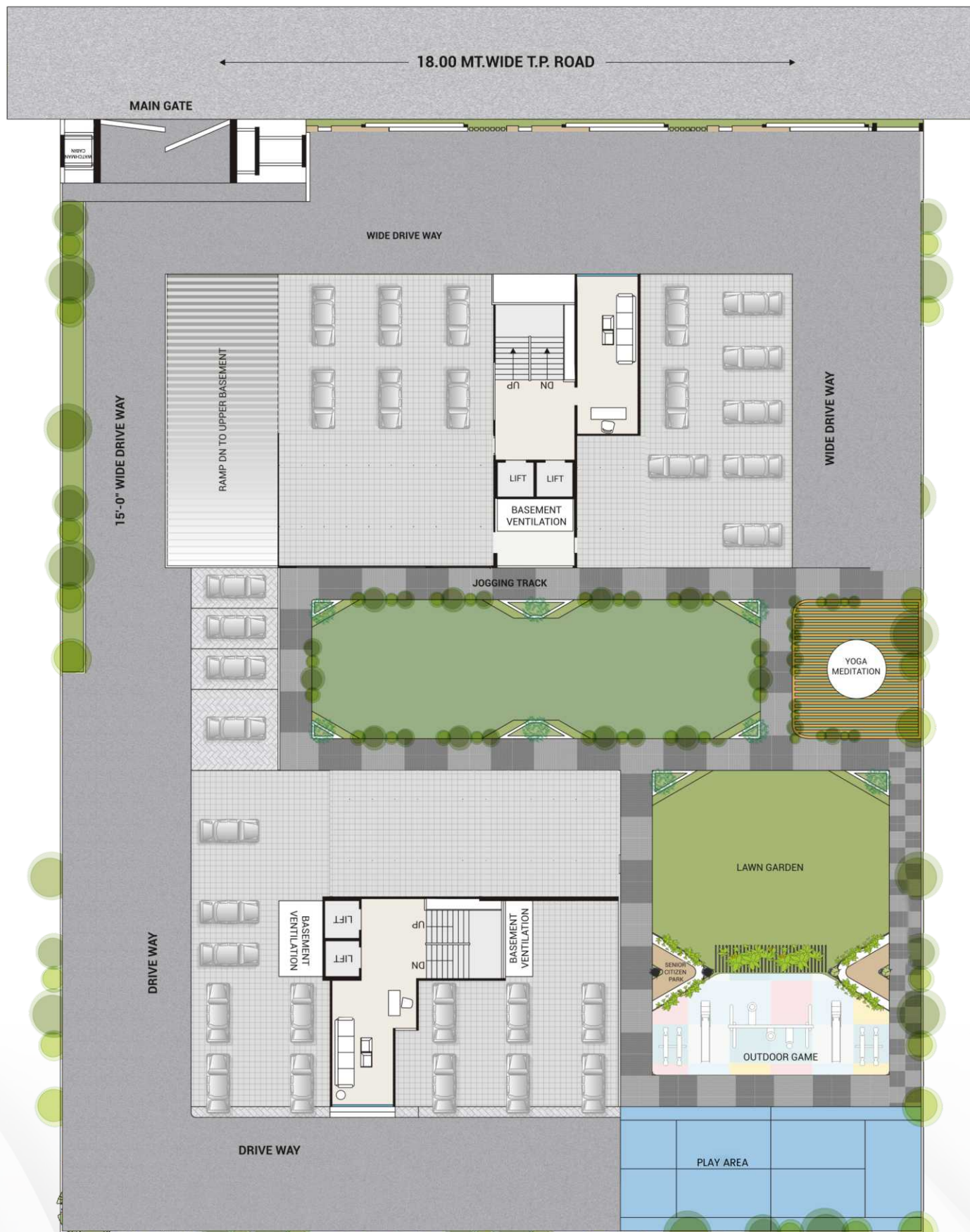
3BHK LUXURIOUS  
APARTMENTS



PROJECT BY  
**DRBs LR DEVELOPER**



# GROUND FLOOR PLAN



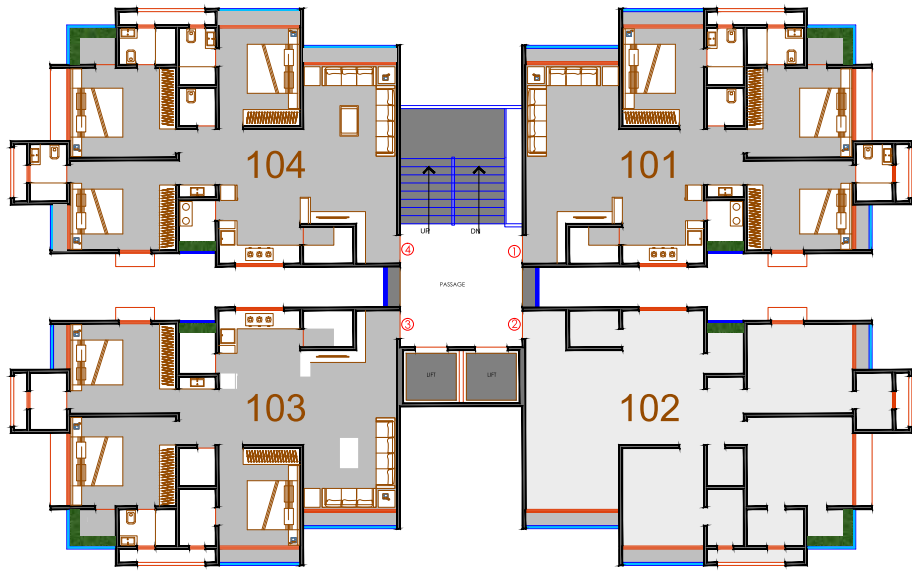
# CAMPUS AMENITIES

 Landscape Garden with Large Open Area	 Bus Pick up & Drop	 Yoga - Meditation Garden Space	 Skating, Jogging & Walking Track	 Double Basement Parking
 Senior Citizen Sitting Area	 CCTV Coverage of Common Area	 Gym Room	 Indoor Game Zone	 Toddler Outdoor Play Zone
 Entrance Foyer	 Fire Safety Provisions	 14-Storey Apartments	 play area	 Entrance Gate with Security Cabin
	 No Commercial, Purely Residential	 Structure Design Considering Last Earth-Quake		

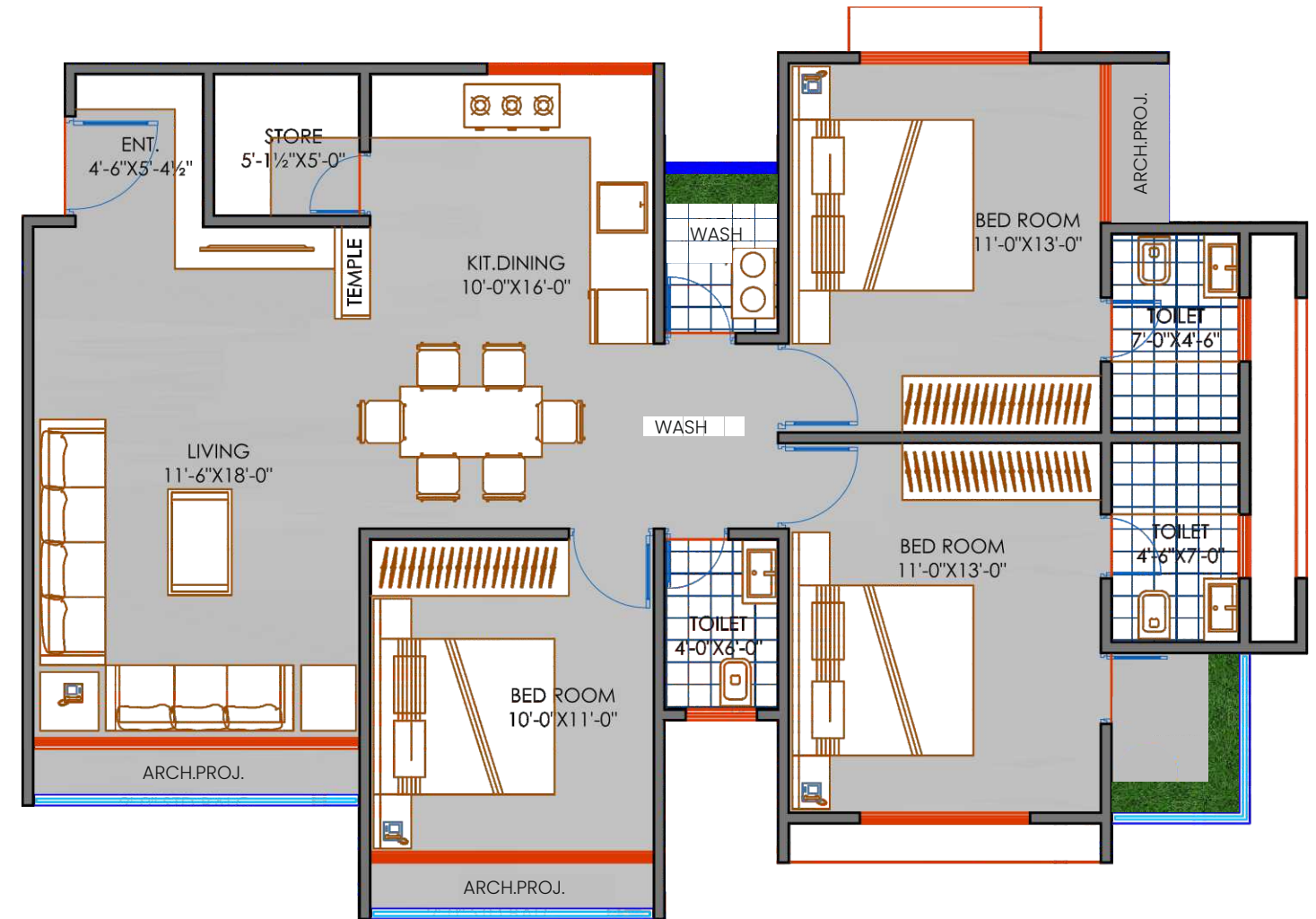
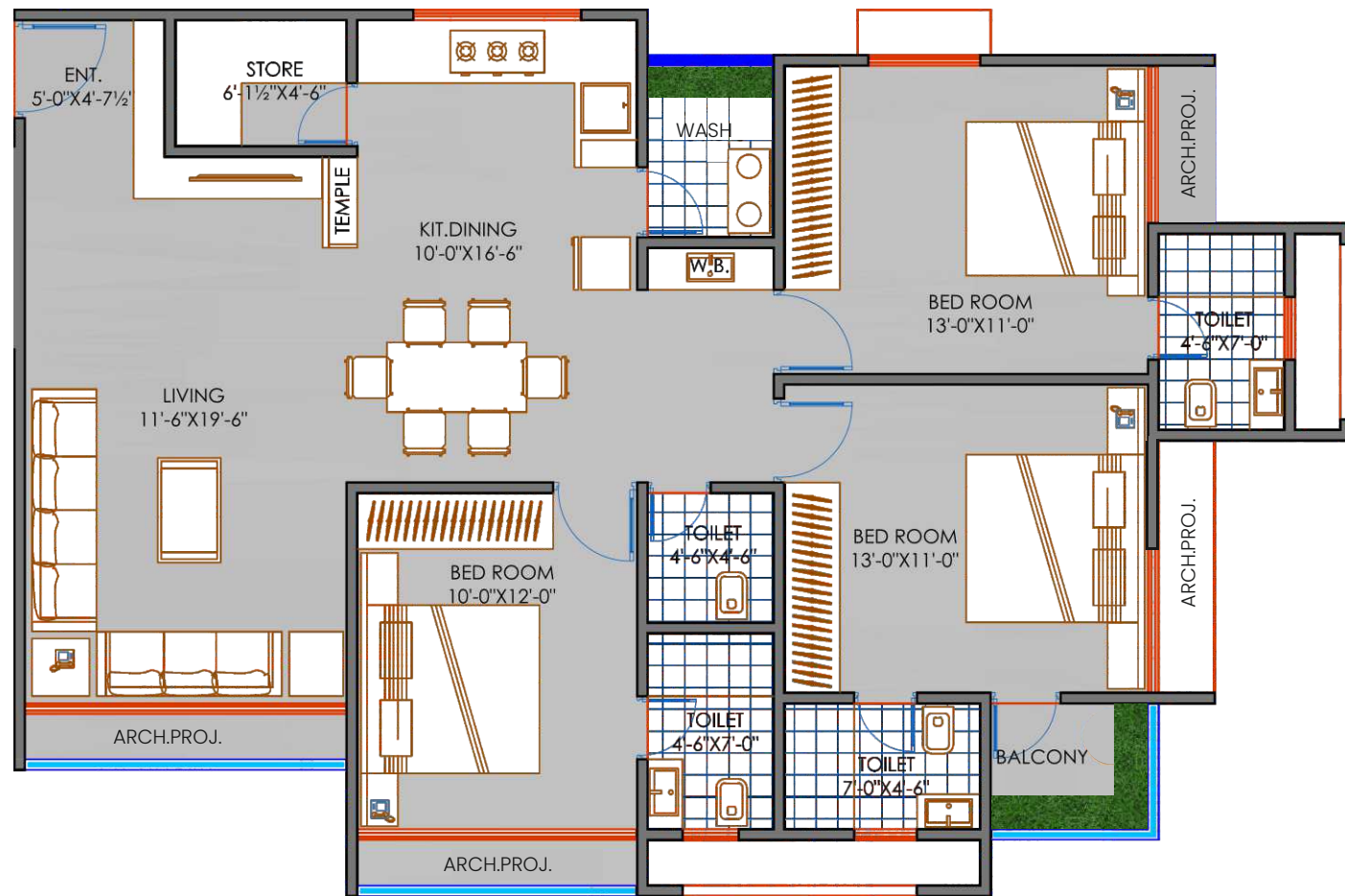
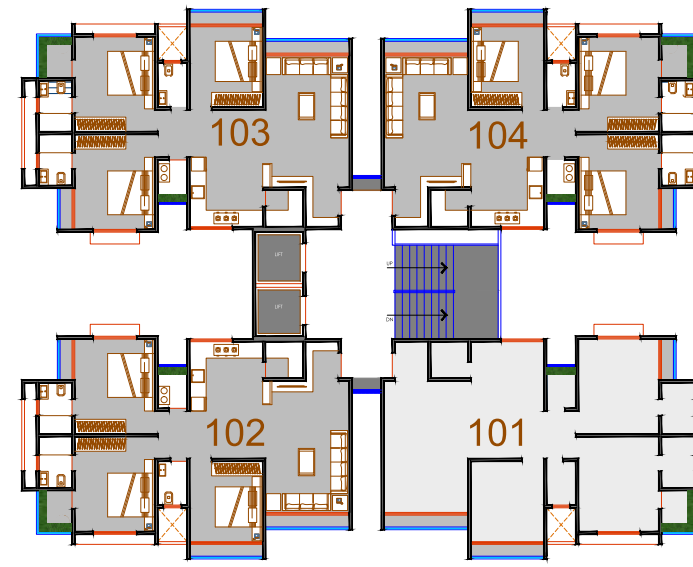
# FLAT AMENITIES

- Designer Railing in Balcony
- Section Window
- Designer Grill in Windows For Safety
- Standard Tiles in Living Room, Kitchen & Dining Area
- Standard Tiles in all Bedrooms
- Standard Make CP & Sanitary Fittings in all Bathrooms
- Standard Switches & Wiring
- Door Frame with Flush Doors
- Kitchen Platform

# A-BUILDING (1-14) Floor plan

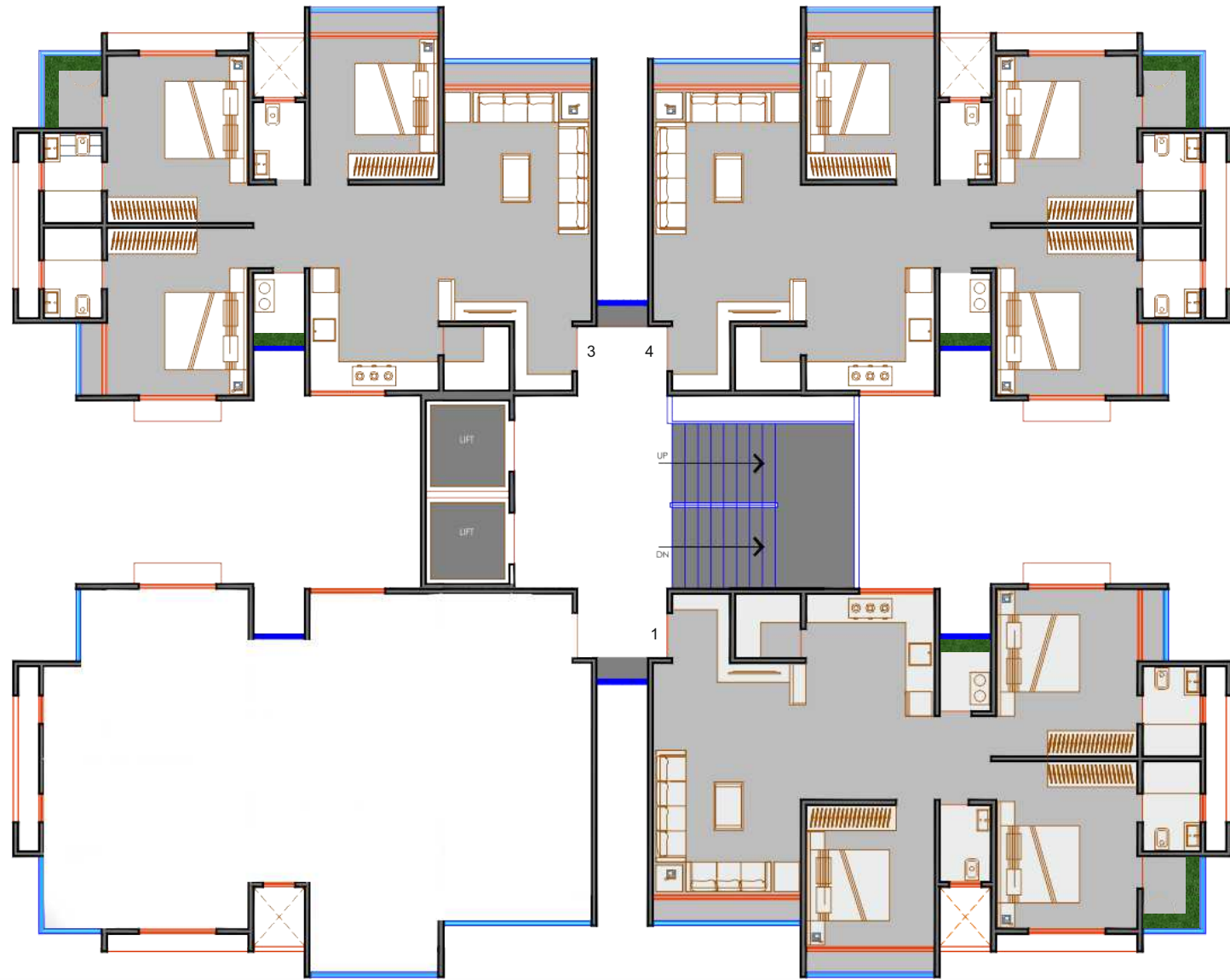


# B-BUILDING (1-13) Floor plan

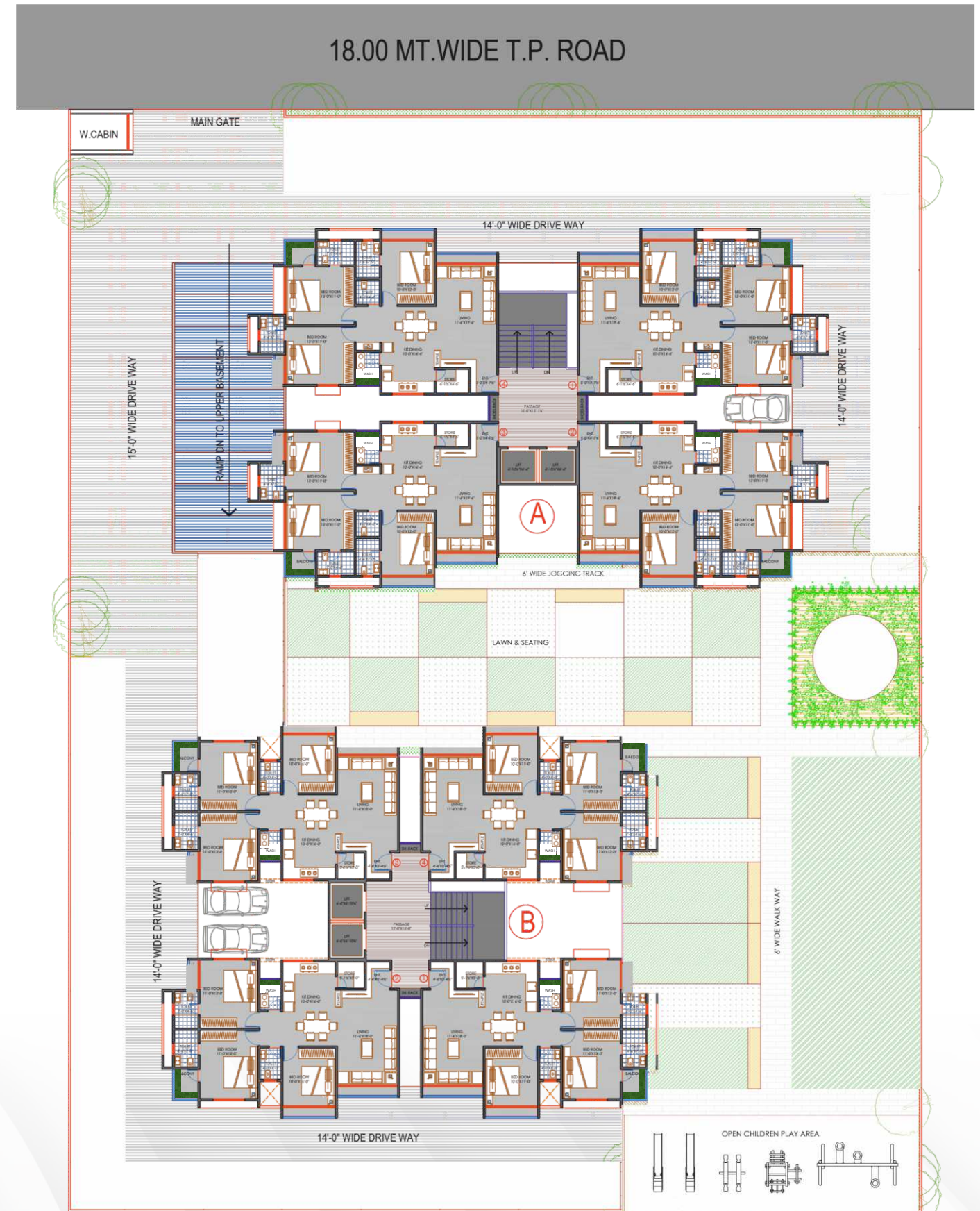




# B-BUILDING (14) Floor plan

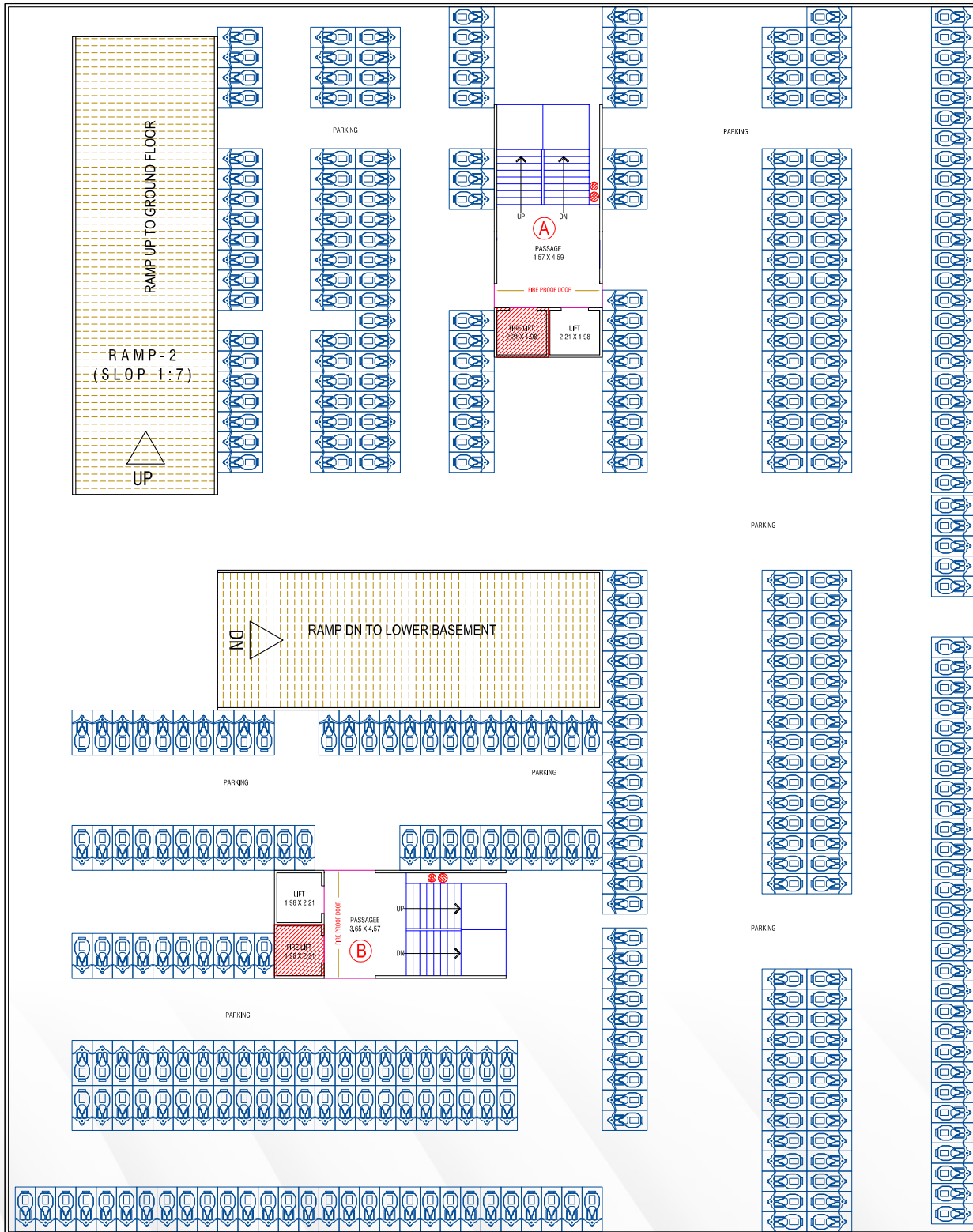


# TYPICAL Floor plan





# UPPER BASEMENT



# LOWER BASEMENT

