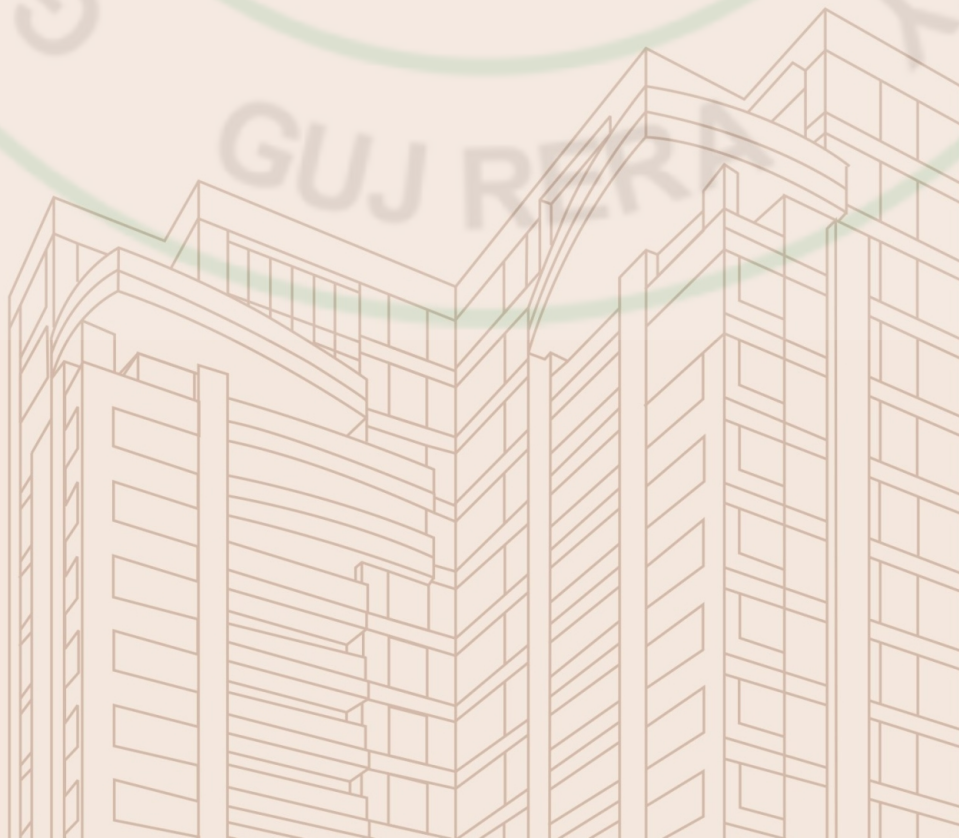


A project by

SADA Realty



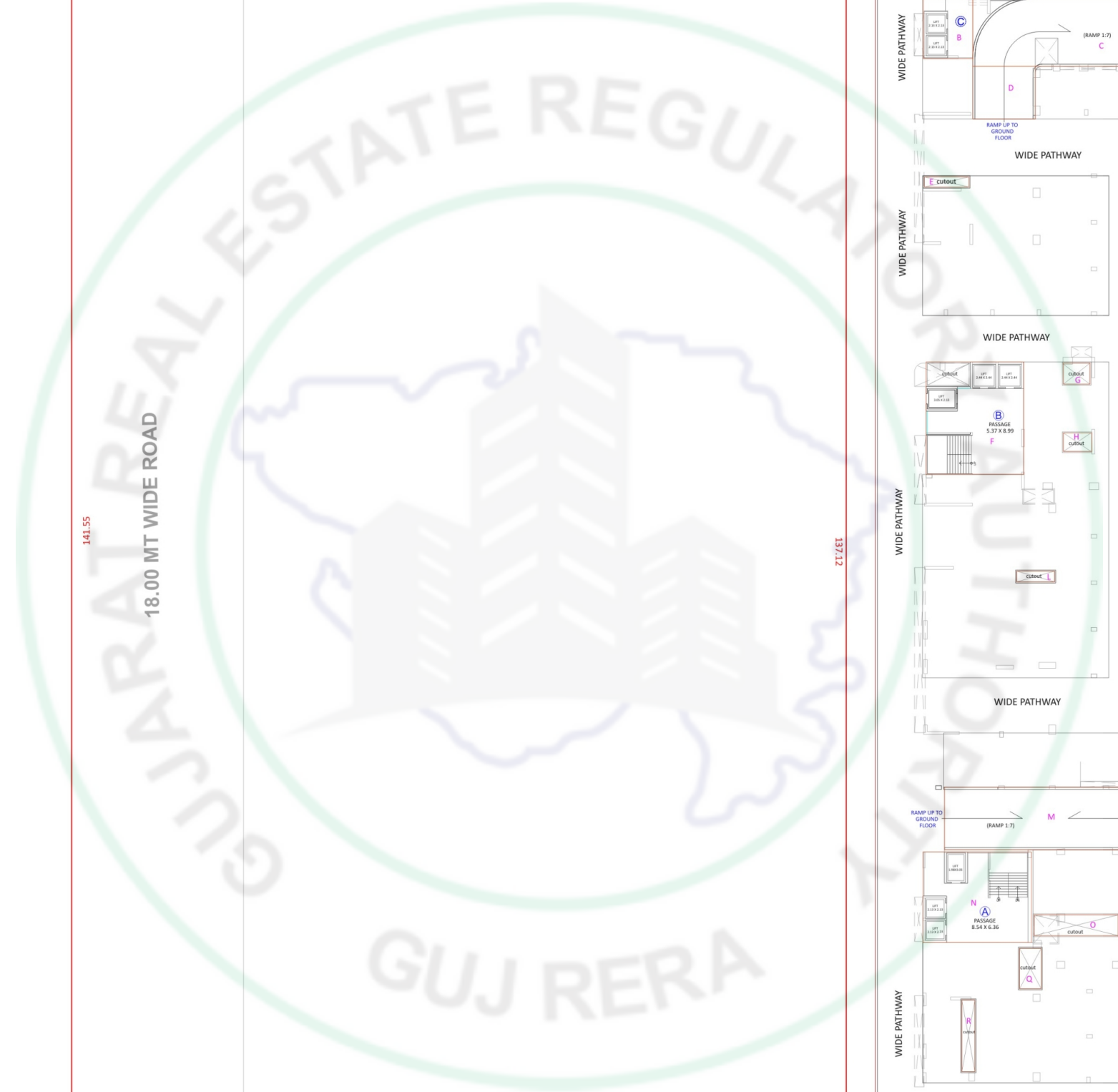
PIRAMYD
PALACIA
IMPERIAL LIVING



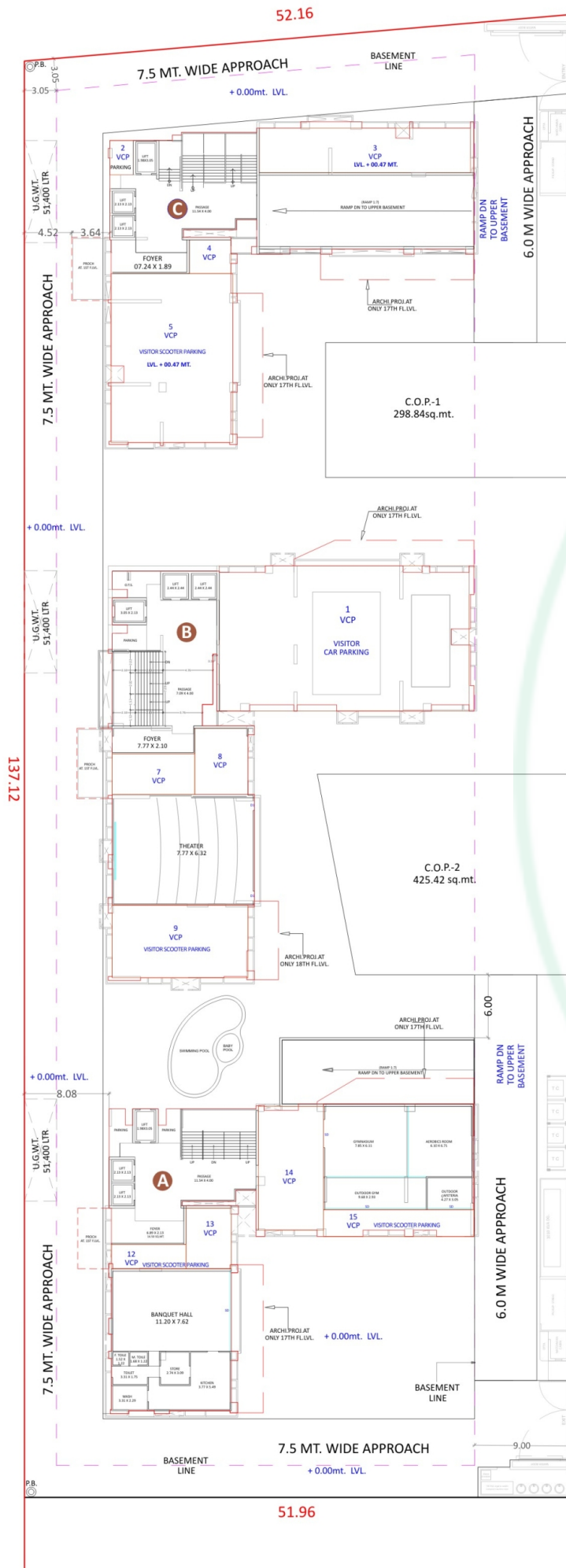
**Lower Basement
Parking Plan**



**Upper Basement
Parking Plan**



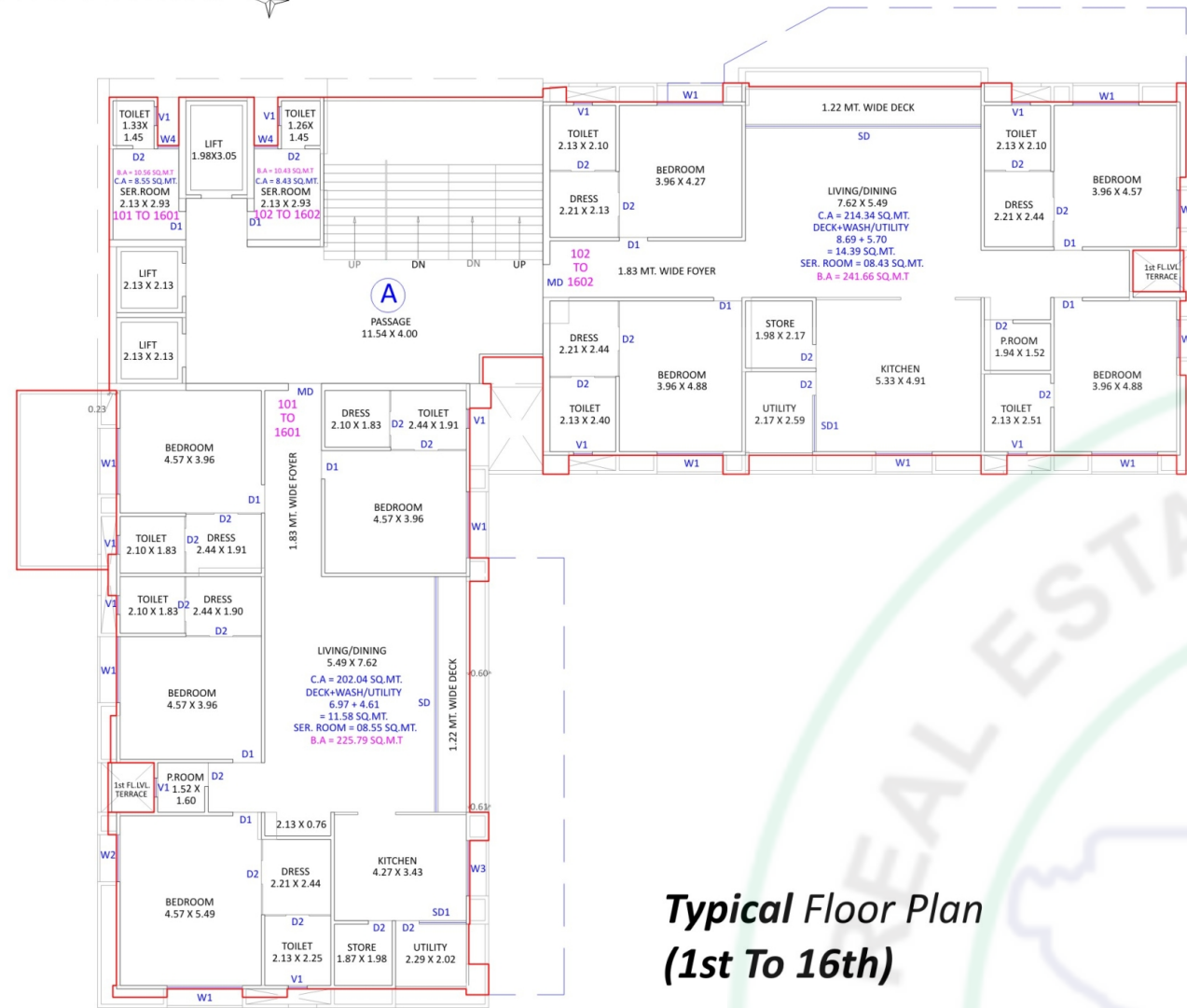
Ground Floor Plan



18.00 MT WIDE ROAD

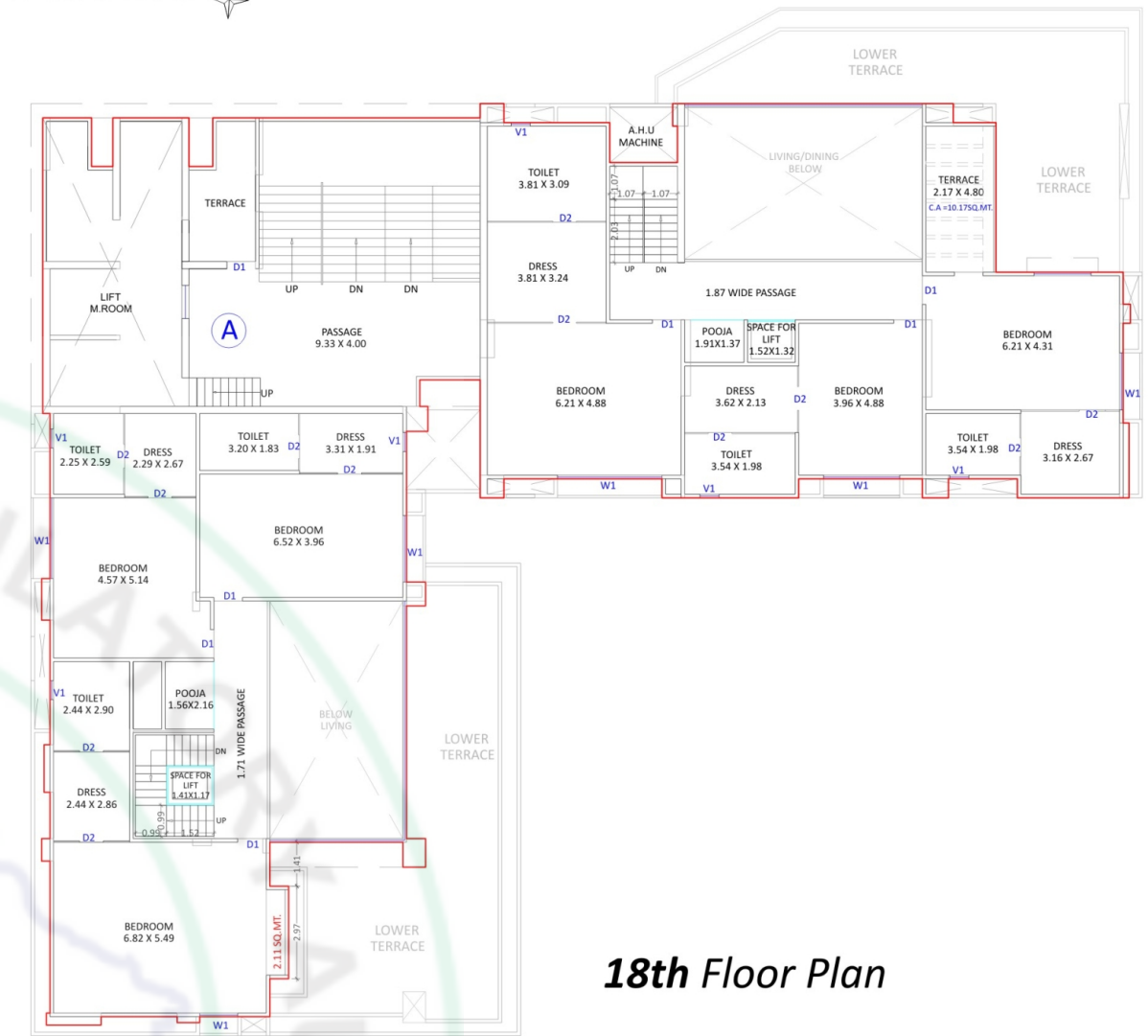


A - TYPE BUILDING

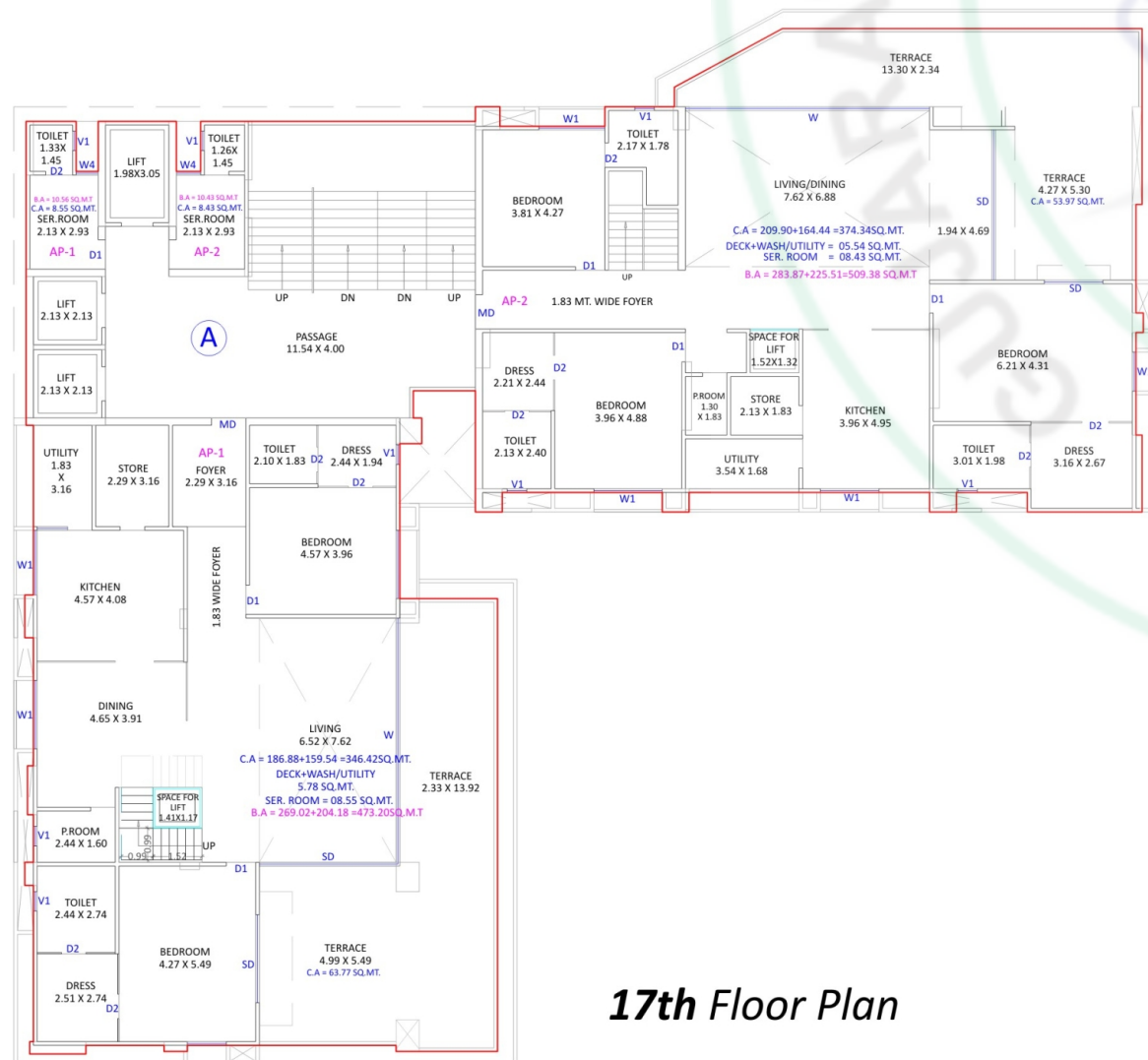


**Typical Floor Plan
(1st To 16th)**

A - TYPE BUILDING

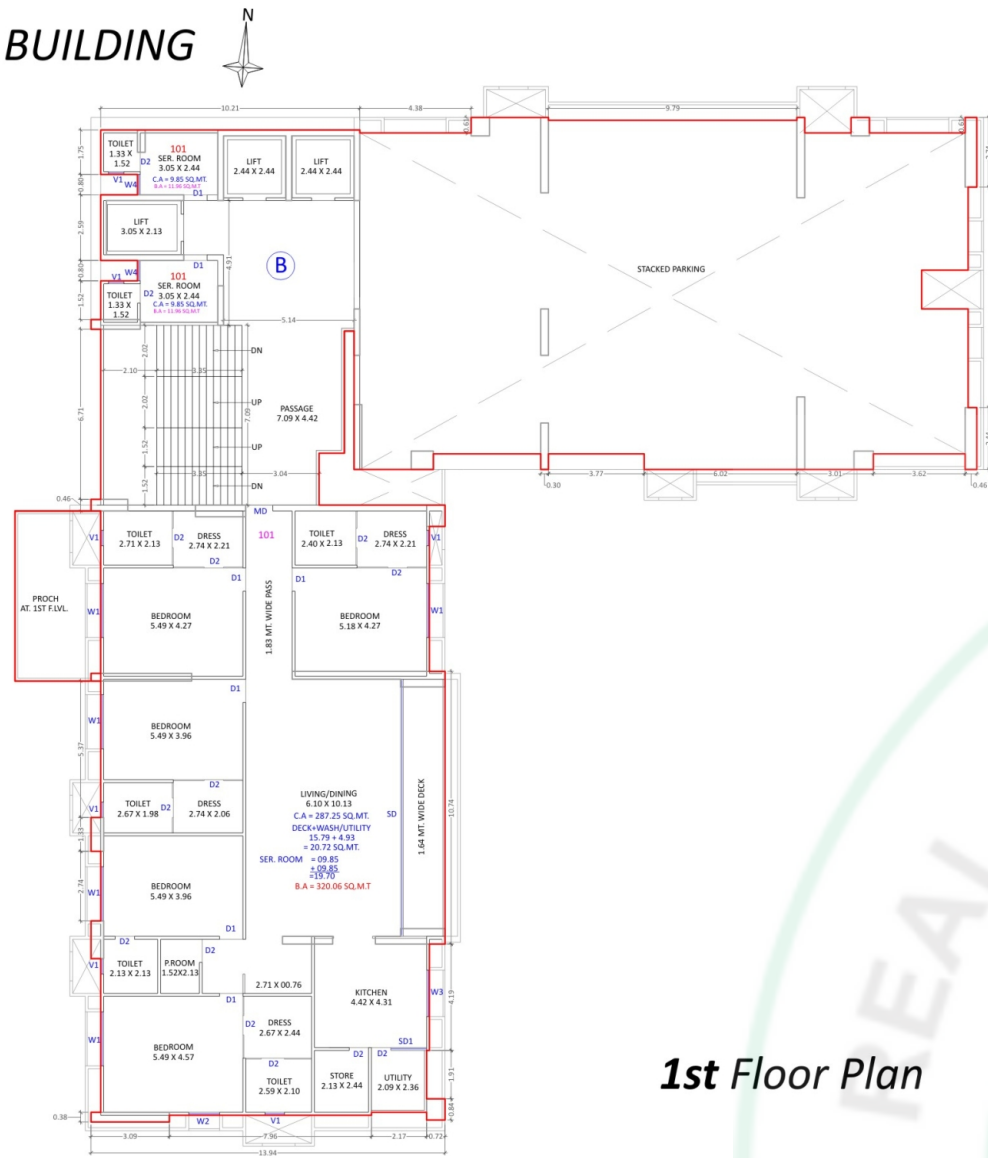


18th Floor Plan

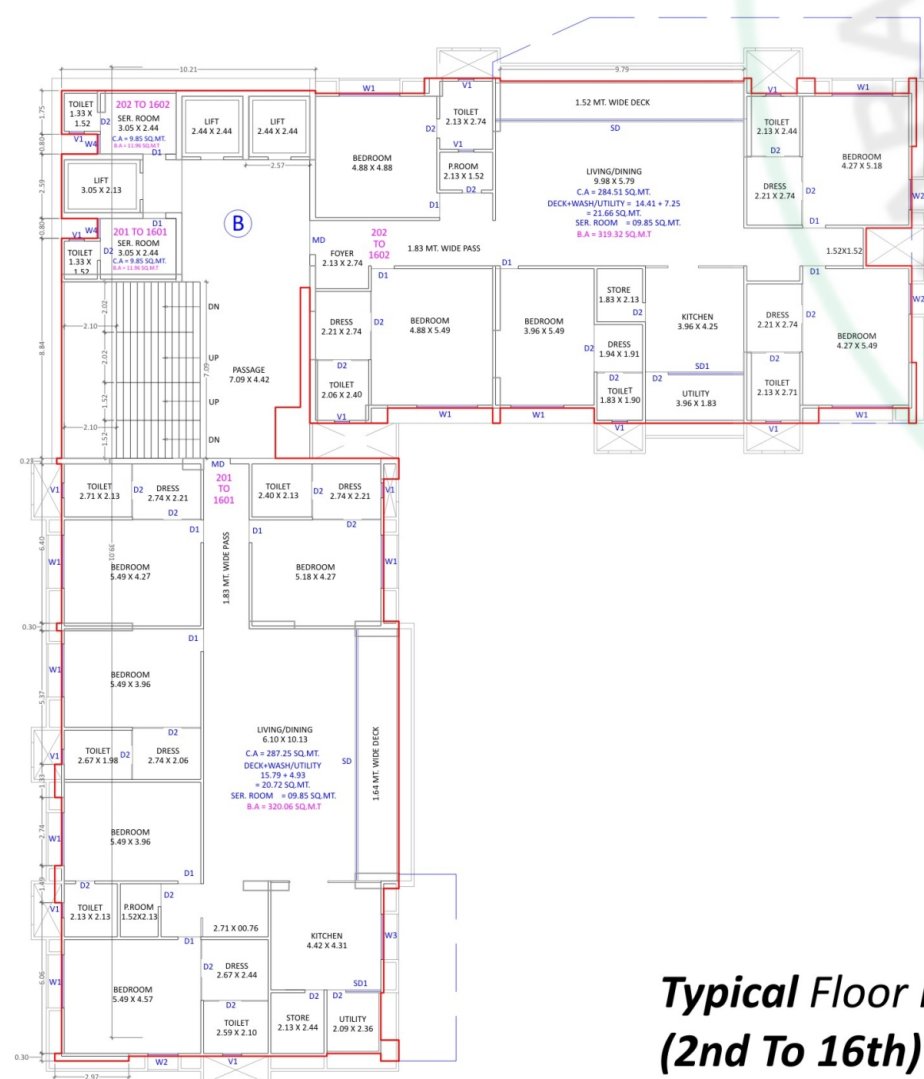


17th Floor Plan

B - TYPE BUILDING

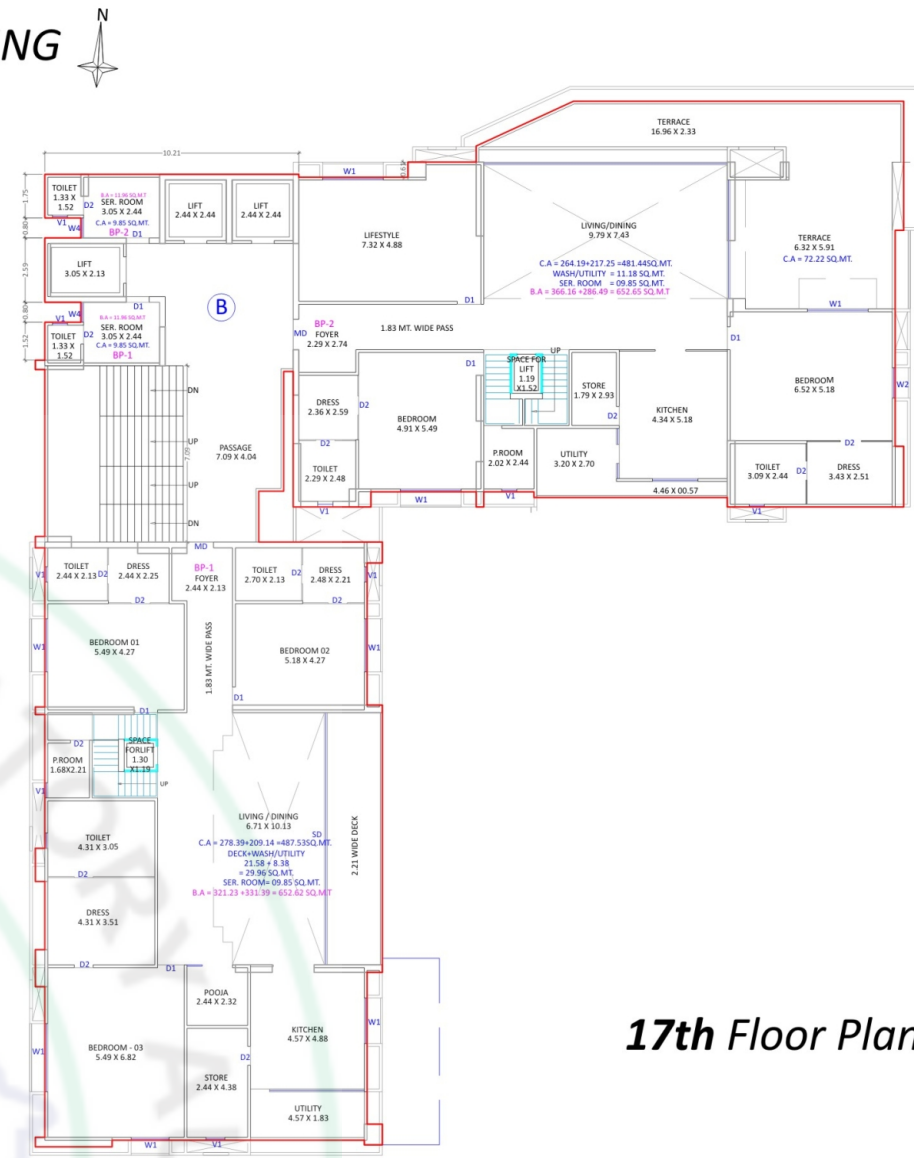


1st Floor Plan

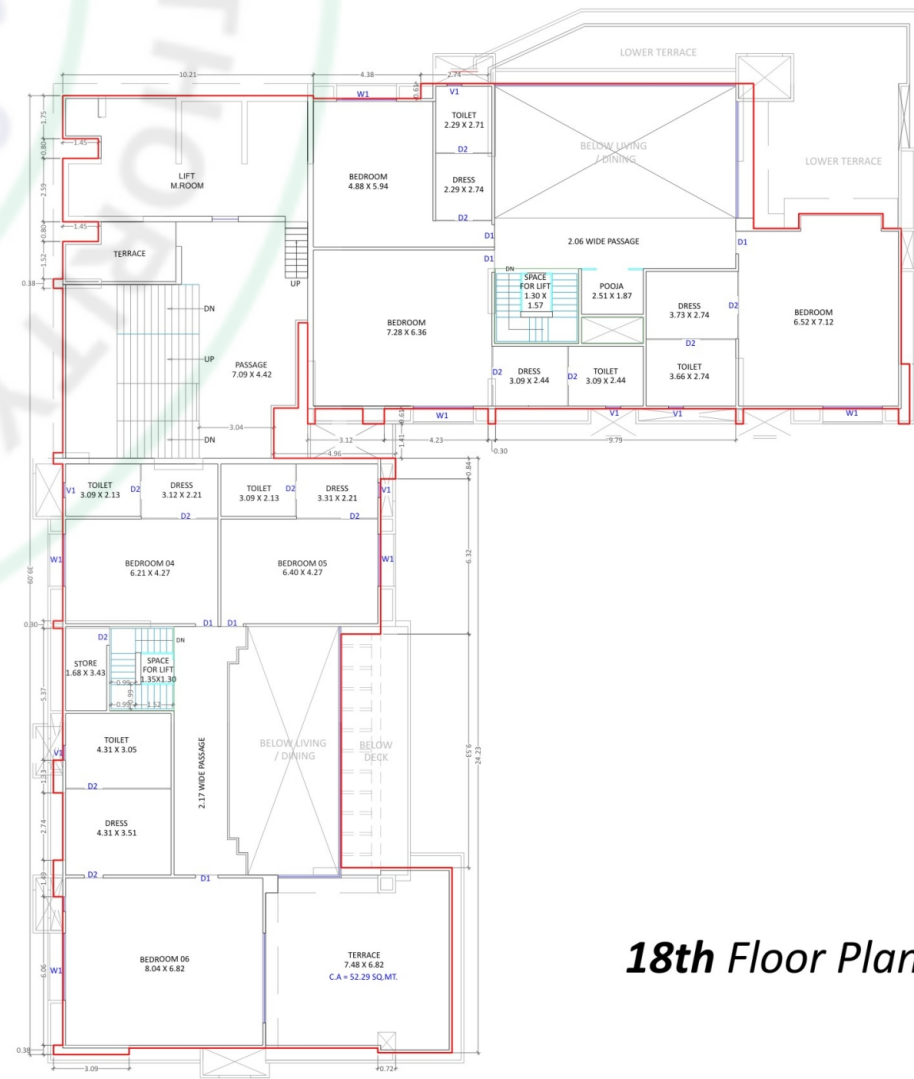


**Typical Floor Plan
(2nd To 16th)**

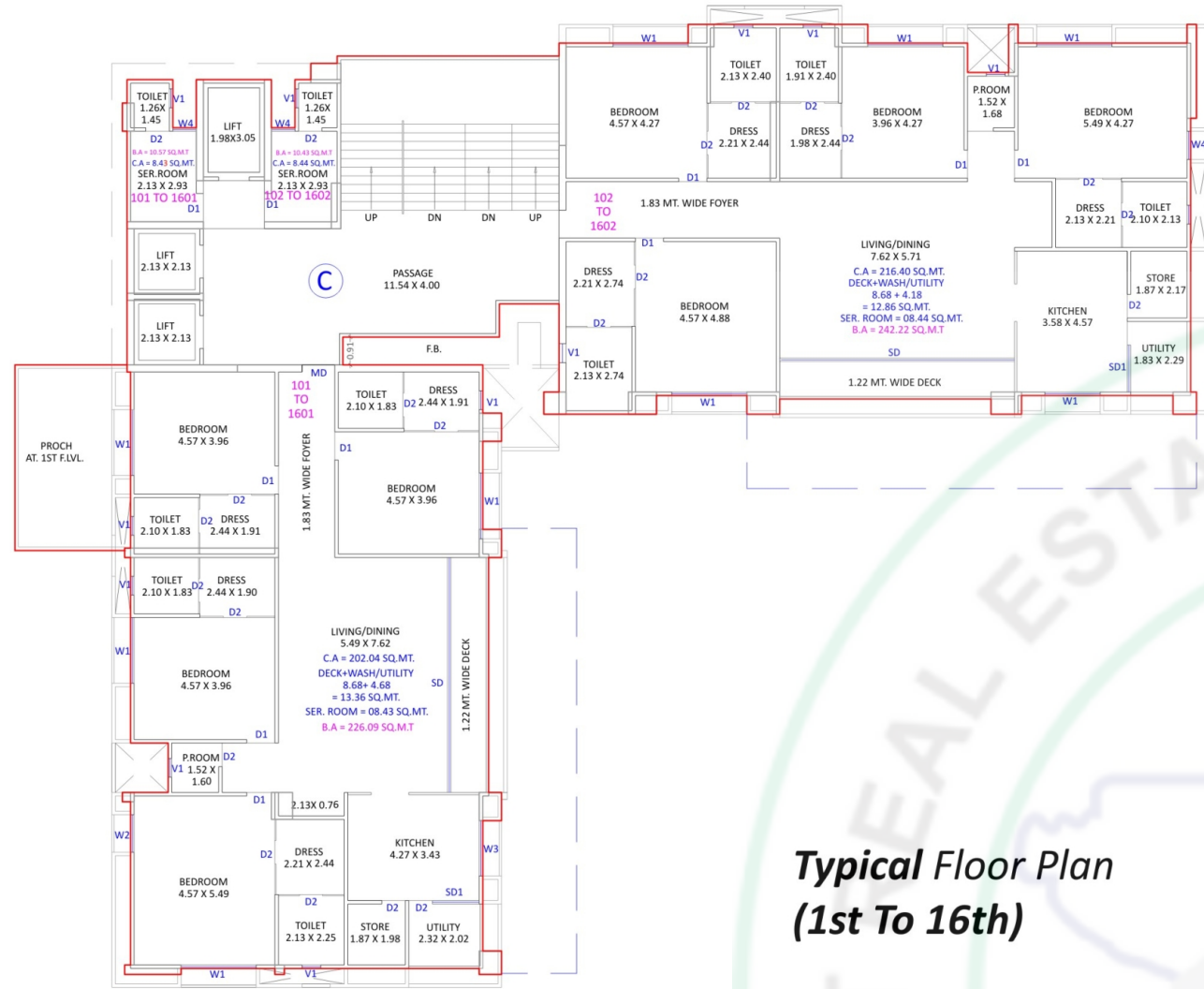
B - TYPE BUILDING



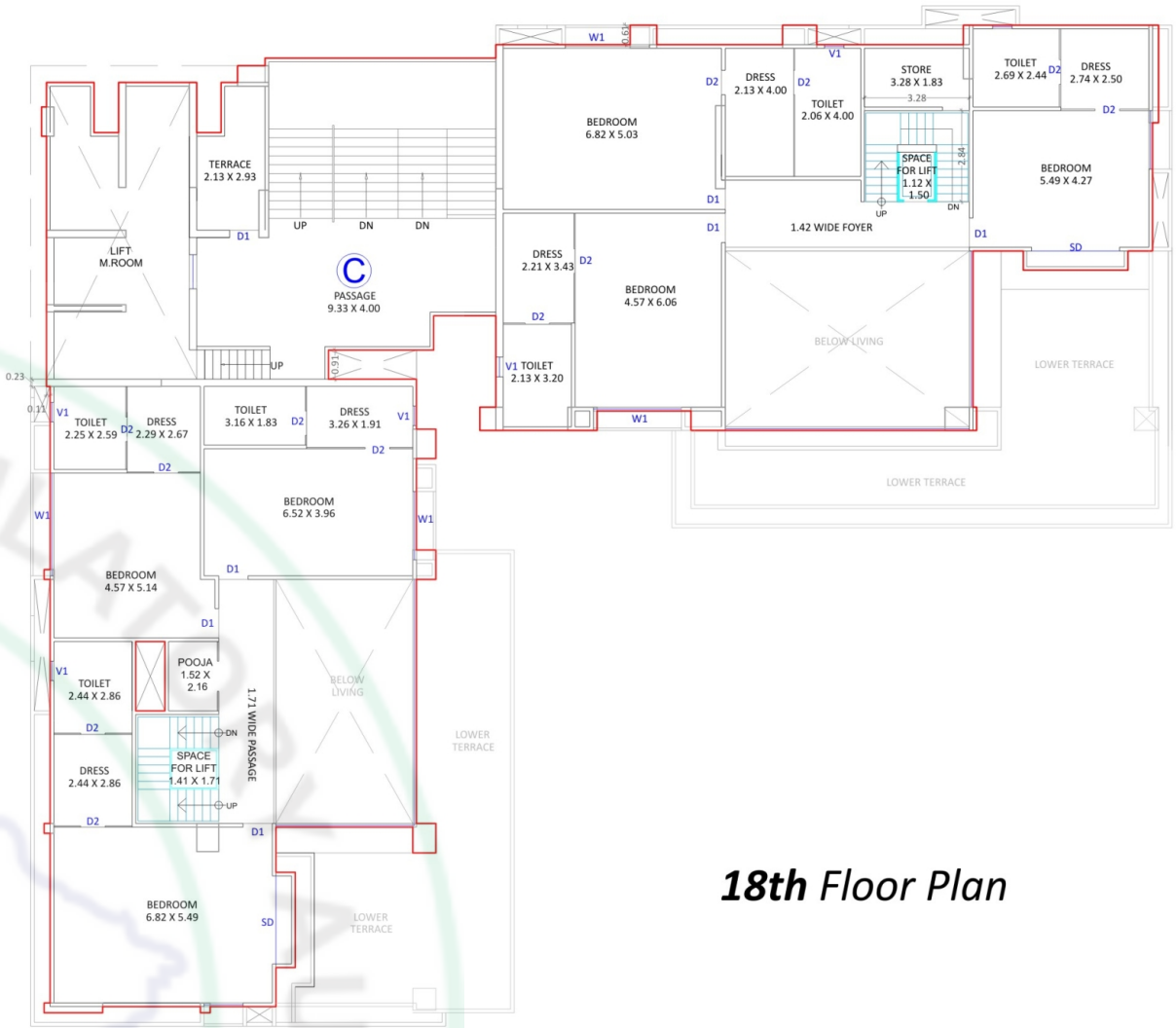
17th Floor Plan



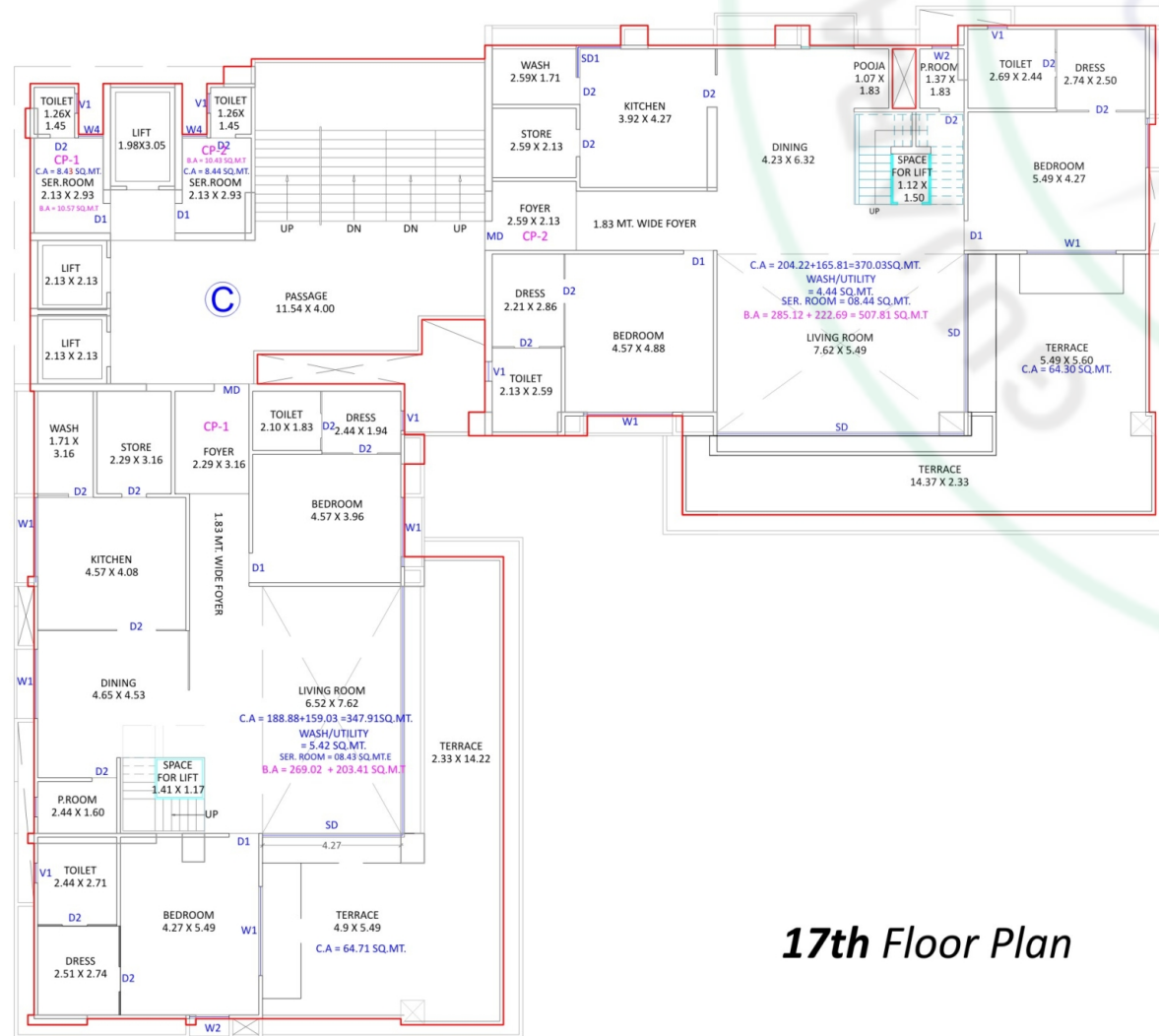
18th Floor Plan



Typical Floor Plan (1st To 16th)



18th Floor Plan



17th Floor Plan



scan for location



PIRAMYD PALACIA

IMPERIAL LIVING

Site Address: Piramyd Palacia,
Near G.D. Goenka Canal Junction,
University Road, Surat

GREENOPOLIS

BUILDING SPECIFICATION

STRUCTURE

- Earthquake resistance R.C.C. framed structure as per IS code

EXTERNAL WALL FINISH

- Double coat plaster with exterior weather shield paint

ELEVATORS

- 3 Nos. of good quality auto door elevator of Kone / Schindler / Omega or equivalent (2 normal & 1 goods lift)

WATER SUPPLY

- U.G. & Overhead water tank for SMC water of sufficient storage capacity

SAFETY & SECURITY

- Gated campus with security cabin
- Fully equipped fire fighting system
- 24x7 CCTV surveillance

PARKING

- Double basement parking
- Allotted car parking

ELECTRICAL & POWER BACKUP

- Adequate generator for common facility
- Light fitting of standard make in common passage & campus

NO. OF FLOORS

- Two basement parking + ground level + 18 floors

Note • All rights for alteration / modification and development in design or specifications by architects and / or developer shall be binding to all the members. • B.U.C. (Building Use Certificate) As Per S.M.C. Rules. • Clear Titles for Loan purpose. • This brochure is for private circulation only, by no means it shall form part of any legal contract documents. • All apartments will be handed over without any interior finishes like flooring, plumbing and electric. Will be done by customer after the flat is handed over.

A project by
SADA Realty

Architect



MEPF Consultant



Contact Details : **+91 89800 96000**

info@piramydgroup.in | www.piramydgroup.in

WE REQUEST • Stamp duty, Registration charges, Legal charges, GEB/TORRENT/SMC charges, Society maintenance charges expense etc. shall be borne by the purchaser. • GST, as & if applicable, will be borne by the purchaser. • Any additional charges or duties levied by the Government/Local authorities during or after the completion of the scheme like SMC tax, betterment/ IC charge (deposit) will be borne by the purchaser. • In the interest of continual developments in design & quality of construction, the developer reserves all rights to make any changes in the scheme including technical specifications, designs, planning, layout & all purchasers shall abide by such changes. • Changes/ alteration of any nature including elevation, exterior color scheme, balcony grill or any other changes affecting the overall design concept & outlook of the scheme are strictly NOT PERMITTED during or after the completion of the scheme. • All external laying and drawing of low-voltage cables such as mentioned or other shall be strictly laid as per consultants service drawings with prior consent of Developer / Builder's office. No wires/ cables / conduits shall be laid or installed such that they form hanging formation on the exterior faces. • This brochure is intended only for easy display & information of the scheme & does not form part of legal documents.



A project by
SADA Realty

RERA REG.:
www.gujrera.gujarat.gov.in