

A Project By :



LIVE IN SYNC WITH NATURE



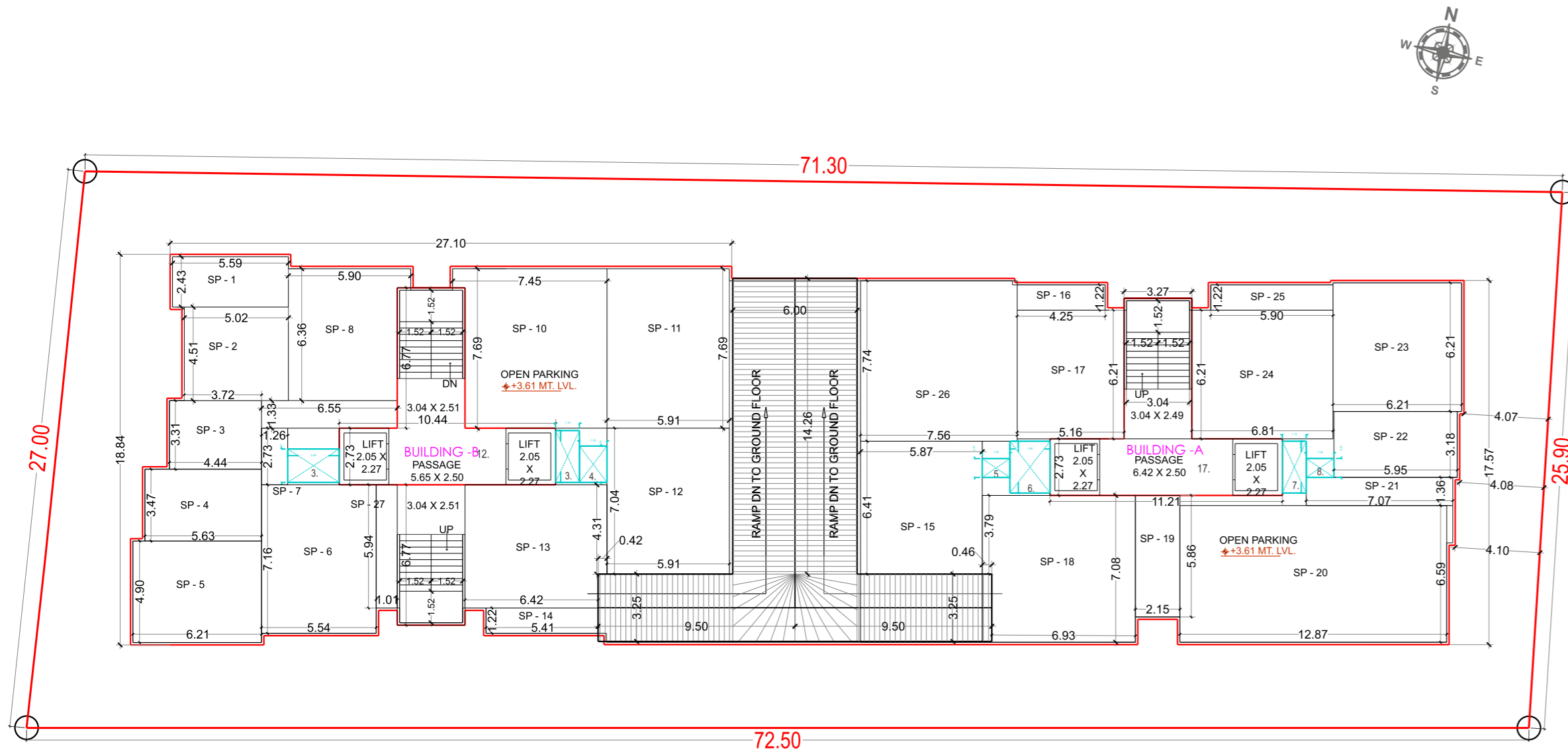
PRITHVI  
HOMES

**2 & 3 BHK ULTRA MODERN HOMES**

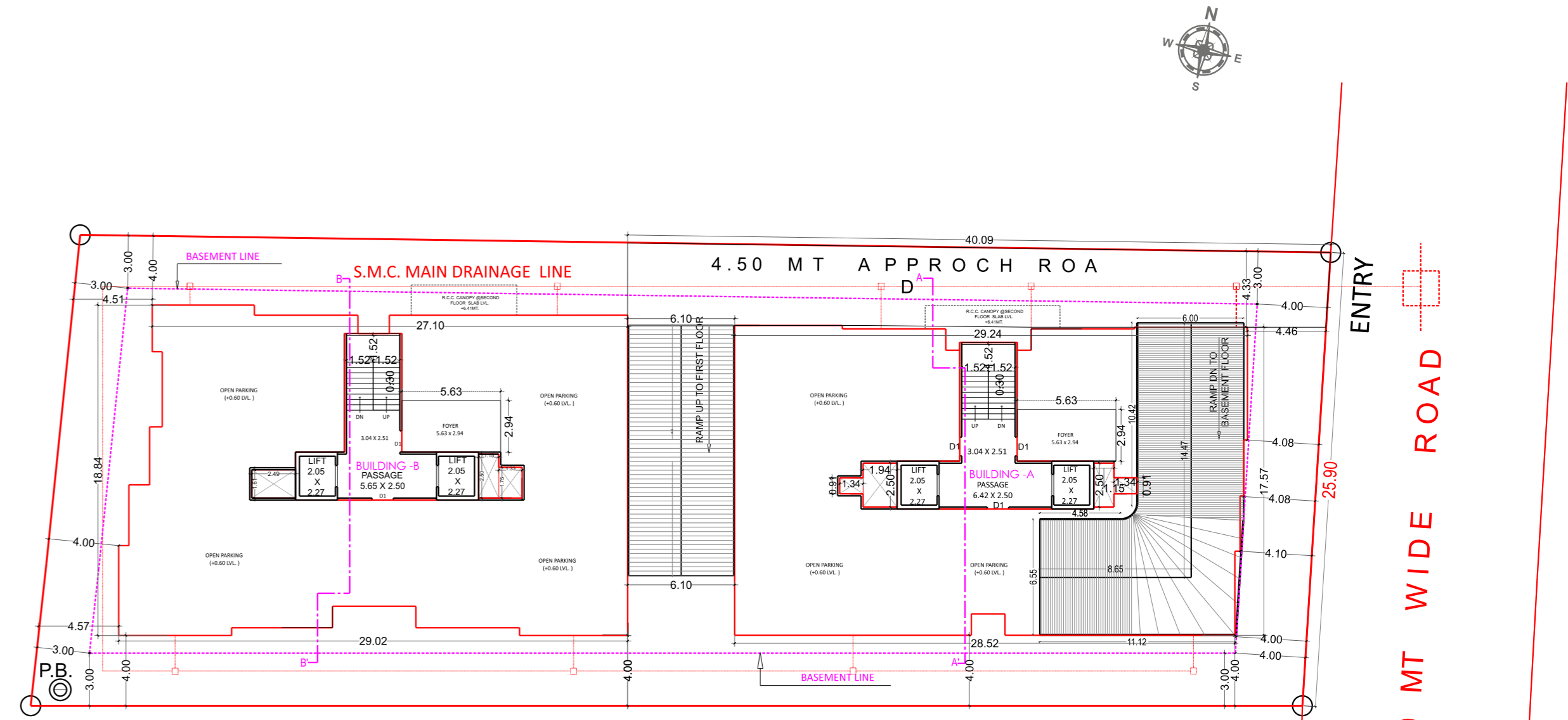


02

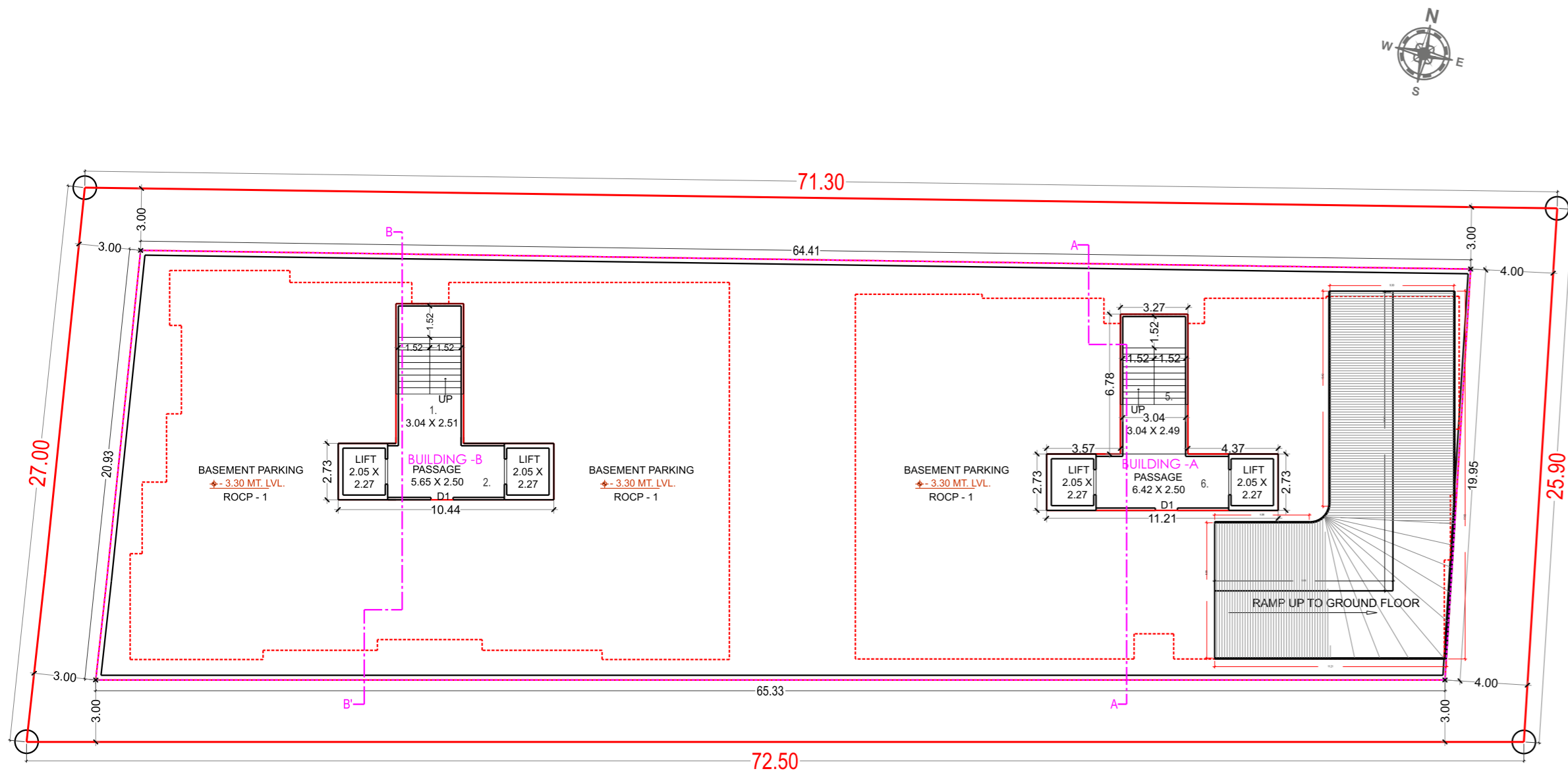
03



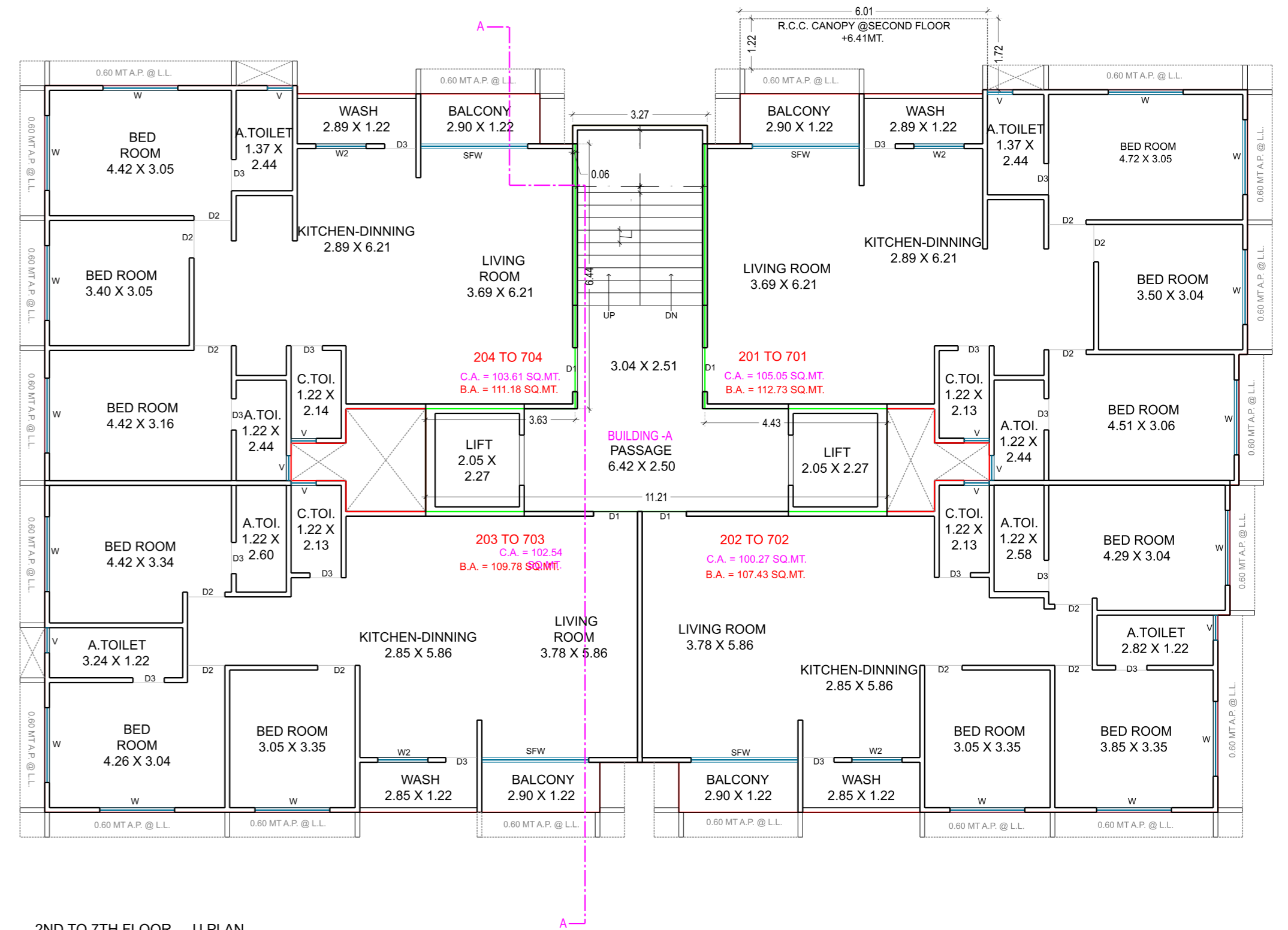
**FIRST FLOOR PARKING PLAN**  
 LVL:- +3.61 MT  
 SCALE:- 1CM = 2MT



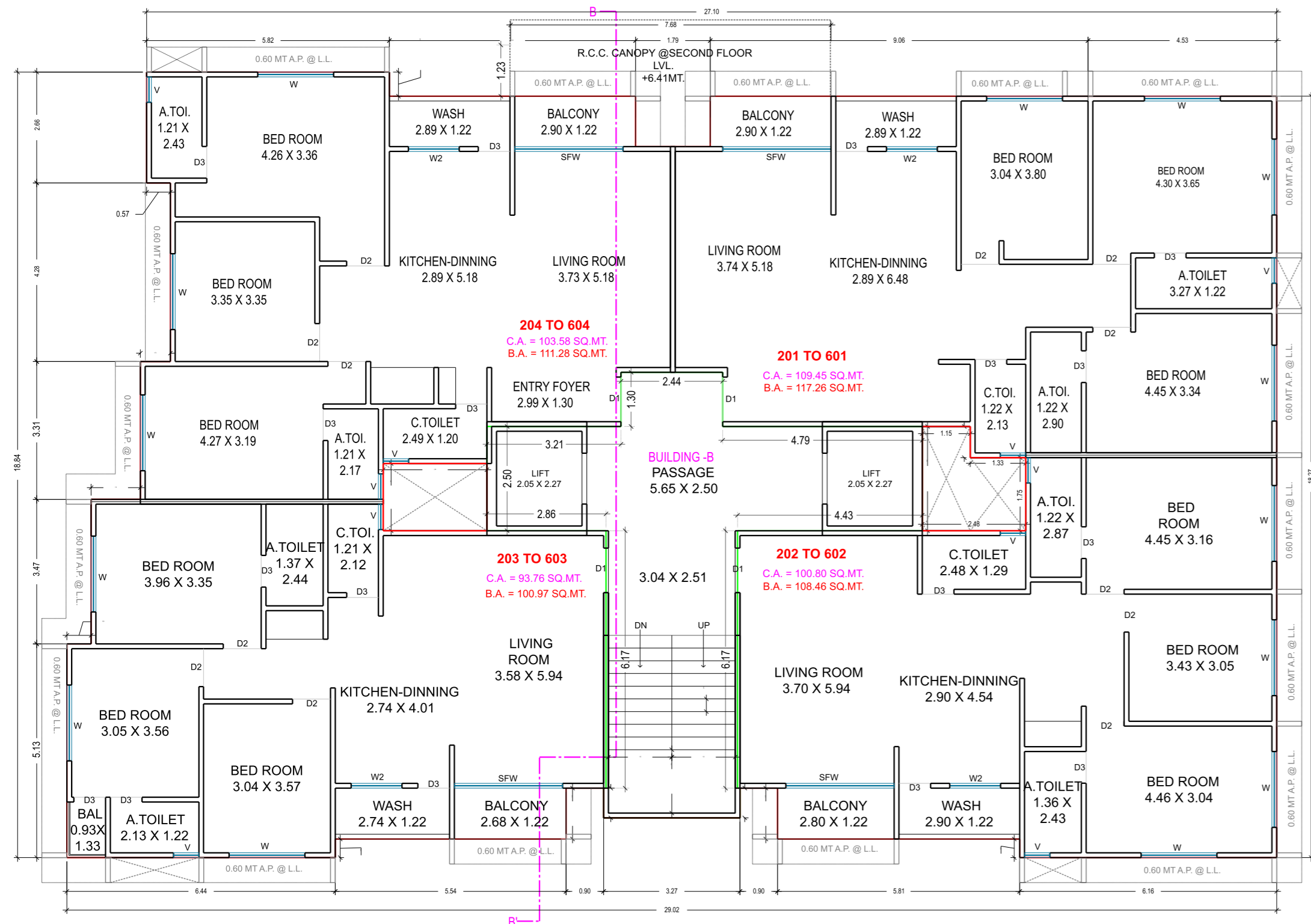
**GROUND FLOOR PARKING PLAN**  
 LVL:- + 0.60 MT  
 SCALE:- 1CM = 2MT



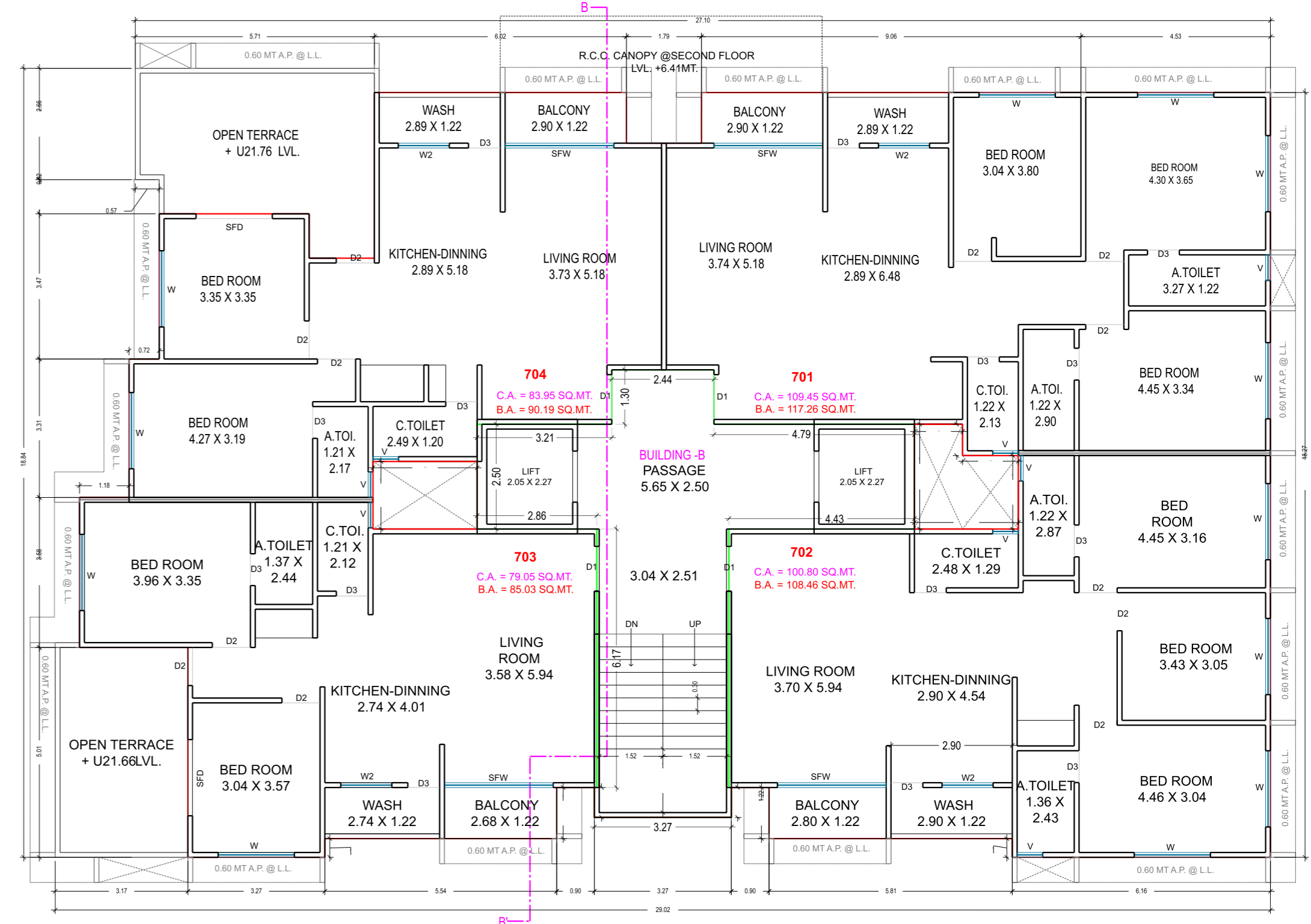
**BASEMENT FLOOR PARKING PLAN**  
 LVL:- -3.30 MT  
 SCALE:- 1CM = 2MT



**2ND TO 7TH FLOOR U PLAN**  
 ULVL:- +6.41 MT TO +21.66 MT  
 USCALE:- 1CM = 1MT



2ND TO 6TH FLOOR U PLAN  
 ULVL:- +6.41 MT TO + 18.61 MT  
 USCALE:- 1CM = 1MT



7TH FLOOR U PLAN  
 ULVL:- +6.41 MT TO + 18.61 MT  
 USCALE:- 1CM = 1MT

# SPECIFICATION



## CONSTRUCTION

Enhanced structured safety against earthquake for relevant zone



## COLOUR

All building finished with internal white putty outside standard weathershield max quality paint.



## SECURITY SYSTEM

Campus will be protected by compound wall secured campus with security cabin at entry-exit & CCTV at main gate.



## ENTRANCE FOYER

Furnished foyer with reception table & waiting lounge



## FLOORING :

Living room/dinning, kitchen and all bedrooms vitrified grenamite tiles.



## KITCHEN :

Kitchen platform will be made of granite stone with SS sink



## DOORS :

• Main door will be decorative and other doors are flush door with granite frame



## WINDOWS :

• All windows of anodized/Coating aluminium sections and window framing in granite



## TERRACE

Water proofing in terrace with China moisec flooring.



## ELEVATORS CONFIGURATION

Premium quality lift with safety devise in case of emergency



## WATER SUPPLY

Sufficient water tank will be provided with adequate water supply



## PLASTER

Good quality plaster finishing as per design



## PARKING

Basement, Ground and 1st level car parking



## GENERATOR

Generator for sufficient power backup for common area of building.



## ELECTRIFICATION :

• Concealed circuit wiring of standard (ISI MARK) company with modular switches and MCB · AC & TV point .



## PLUMBING :

Concealed plumbing with standard sanitary ware & C.P. fitting UPVC pipes for water supply, PVC pipes for drainage



## STAIRCASE :

Staircase finished with granite / vitrified tile

10



LOCATION MAP



11

DEVELOPERS BY



ARCHITECT

MAHESH SAVALIYA | KALPESH DEVANI  
M.Tech (SMFE), B.E. (Civil) | B.E. (Civil)  
Consulting Engineers, Structure Designer & Reg. Valuer

STRUCTURE



TOUCH FOR LOCATION



PRITHVI HOMES  
Beside Sai Nagar, Nr. BSNL Office,  
Adajan, Surat - 395009

CONTACT

+91 90331 33999

A Project By :

---



**SANKALP**  
DEVELOPERS