

## SPECIFICATIONS

### STRUCTURE :

- R.C.C. Famed Structure.

### WALL/PAINT :

- External wall with textured/All railings in enamel paint.
- Smooth finish plaster with putty on Internal walls.

### LOBBY :

- Luxurious ground lobby. Upper lobby in vitrified tiles & lift cladding in granite/designer tiles All lobby walls in plastic emulsion paint.

### LIFT :

- Lift of reputed makes having 6 person capacity.

### FLOORING :

All Apartment having vitrified tiles. With 3" skirting in all room.

### KITCHEN :

- Granite platform with steel sink.
- Vitrified tiles in Flooring and dado up to lintel level.

### ELECTRICAL :

- All electrical wiring is concealed with P.V.C. insulation wire and semi-modular type switches. Adequate power outlets and light points provided. 3 Phase power supply will be provided with ELCB Individual meter will be provided for each apartment.

### DOORS :

- Main Door With Decorative Laminate Finish with both side Wooden frame and exclusive lock. Other internal doors laminated finish with granite frames with good quality night latch.

### WINDOWS :

- Anodized Aluminum windows with Heavy sections.

### TOILETS :

- Anti skid ceramic tiles for flooring all vessels are CERA make and plumbing fixtures are JAQUAR make. Designer superior quality tiles on walls up to lintel level.

### SECURITY SYSTEM

- C.C.T.V. Camera will be provided on ground floor, Parking &
- main gate as per requirement.

### PARKING

- One allotted car parking will provided for each flat.

### WATER

- Uninterrupted 24 hour water supply through own bore well.

RE DEVELOPED BY  
**Sapphire Buildcon**

DESIGN ARCHITECT  
**Divyash Desai & Associates**

STRUCTURAL ENGINEER  
**Dev Consultant**

**Site :** Pushkar Apartment, Nr. Vijay Park Society, St. Xavier's College Corner, Navrangpura, Ahmedabad-380009.

**Office :** Sapphire Buildcon, 134 Sardar Patel Colony, Behind United Bank of India, Near Sardar Patel Statue Cross Road Naranpura, Ahmedabad-380009.

**Please Note :** ● Legal Charge/AMC/TORRNT/ADANI/STAMP DUTY/CAR PARKING and Rag. charges will be extra TDS, GST or any such additional taxes by government, semi government or any Authorities would b charged extra. ● Maintenance deposit would be charge extra. ● Internal changes would be permitted at extra cost and with prior permission and No External changed would be permitted. ● If any member canceled them booking charges 25% amount would be debited. **Disclaimer :** ● This brochure is only for information and display purpose only. It does not form of the agreement or any legal document. ● Developer reserve the rights to make any changes in or revised the scheme or part of any detail in the same shall be binding to all purchaser.

# Pushkar

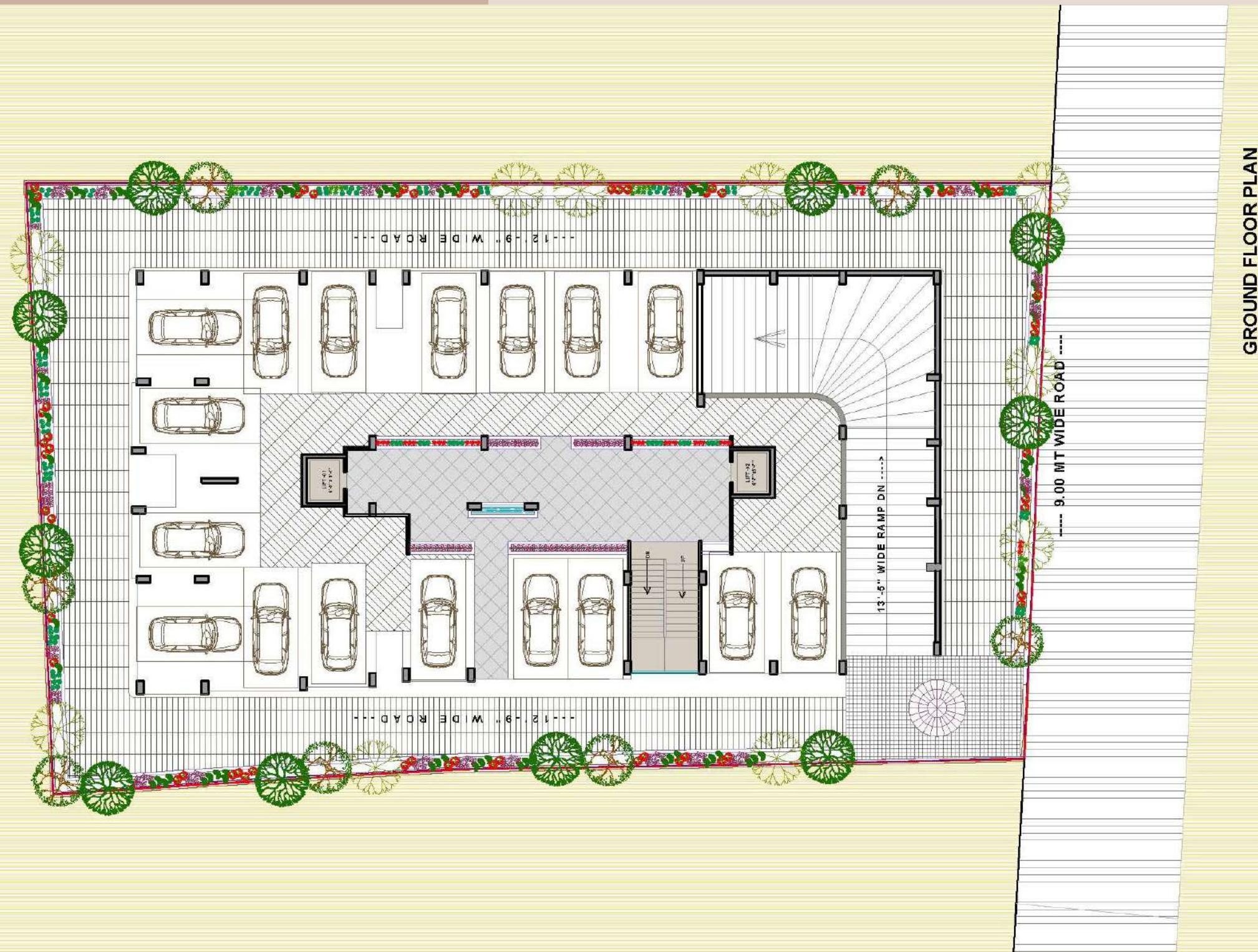
## Apartment

# 3 BHK

## Luxurious Flats



GROUND FLOOR PLAN



GROUND FLOOR PLAN

FRONT VIEW



SIDE VIEW (NIGHT)



# FLAT-06



# BASEMENT FLOOR PLAN



BASEMENT FLOOR PLAN

# TYPICAL FLOOR PLAN



TYPICAL FLOOR PLAN

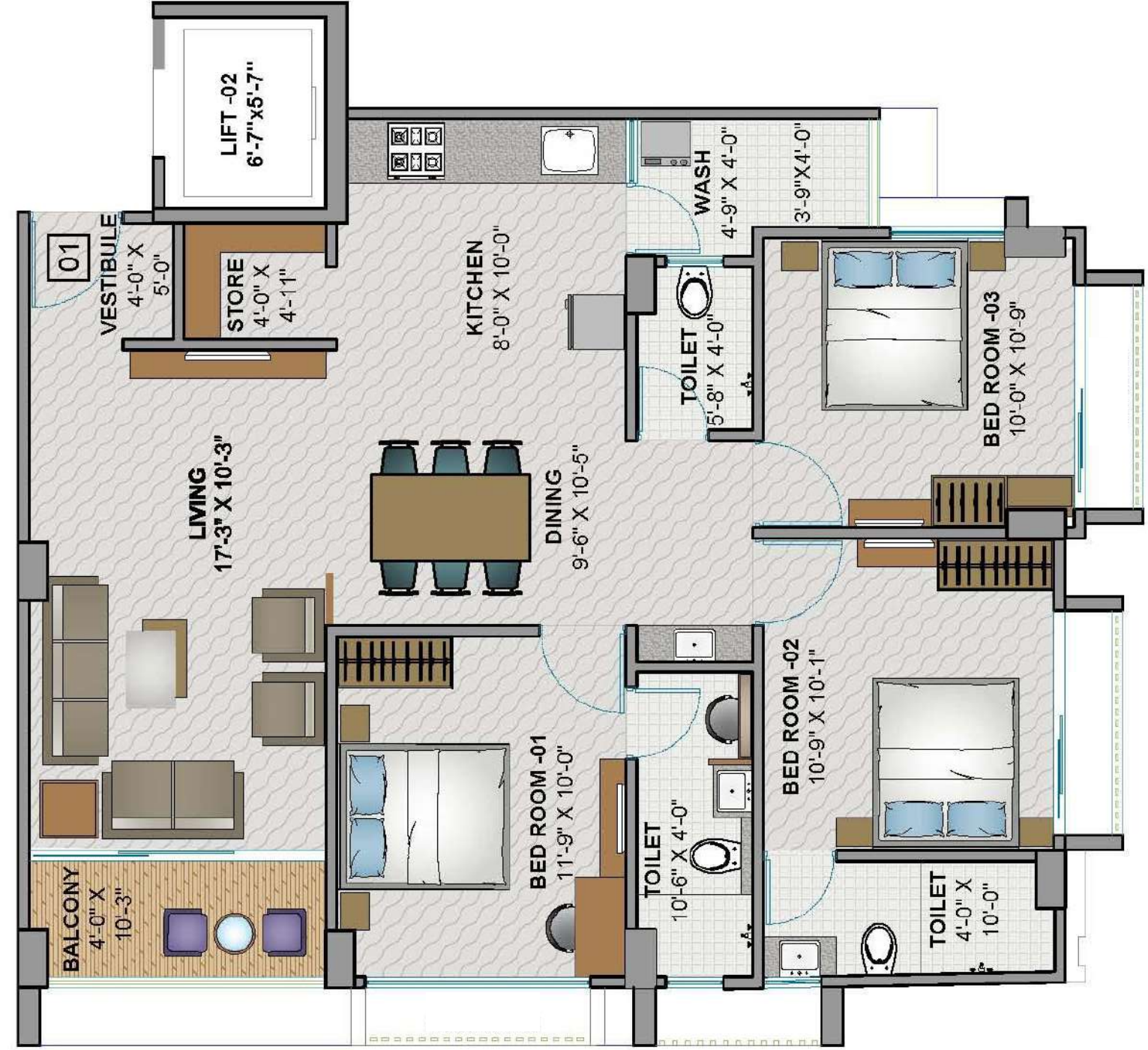
# FLAT-05



# FLAT-04



# FLAT-01



# FLAT-02



# FLAT-03

