



PROJECT BY :

IPIUISIhIPI
GROUP OF COMPANIES
ISO 9001 : 2008



Pushkar Gold

Site Address :
Pushkar Gold, Nr. Akash Metro City,
Opp. Pushkar Elegance,
Besides Pushpkunj-2, Vatva - Ghodasar Canal Road,
Isanpur, Ahmedabad 382443

Contact : 63547 27400 | E-mail : shlokinfra101@gmail.com

3D & Design By:  088843 71717

2 & 3 BHK LIFESTYLE APARTMENTS

LET YOUR DREAMS MEET PUSHKAR GOLD

Welcome to Pushkar Gold - Luxury floor living thoughtfully designed to attain the perfect balance between modernity and natural living.

Each floor offers an intimate outdoor space and magnificent view that makes living at Pushkar Gold even more enriching. Pushkar Gold offers expansive floor living wrapped up impeccably with the elements of nature. Celebrate the joy of copious views of the greens; celebrate the joy of elegant life.



LUXURY
FLOORLIVING




Pushkar Gold


Pushkar Gold

ARTISTIC IMPRESSION

INDULGE IN
THE GOLD
LIFESTYLE



ARTISTIC IMPRESSION





WHERE LIFE MEETS
THE GOLD STANDARD

Indulgence Make A Comeback In Pushkar Gold Lifestyle,
Amenities Will Give You Every Reason To Believe That.
Find Luxury In Every Space, Comfort In Every Corner,each And
Every Amenities In And Around Your Home Has Been Crafted
To Meet Your Heart's Desires.



AMENITIES



Basement parking



Two elevators per block



School bus drop-off-zone



Party lawn



Street light



Security cabin



RCC road



Yoga zone



Gazebo sitting



Fire safety system



Indoor games



Kids play area



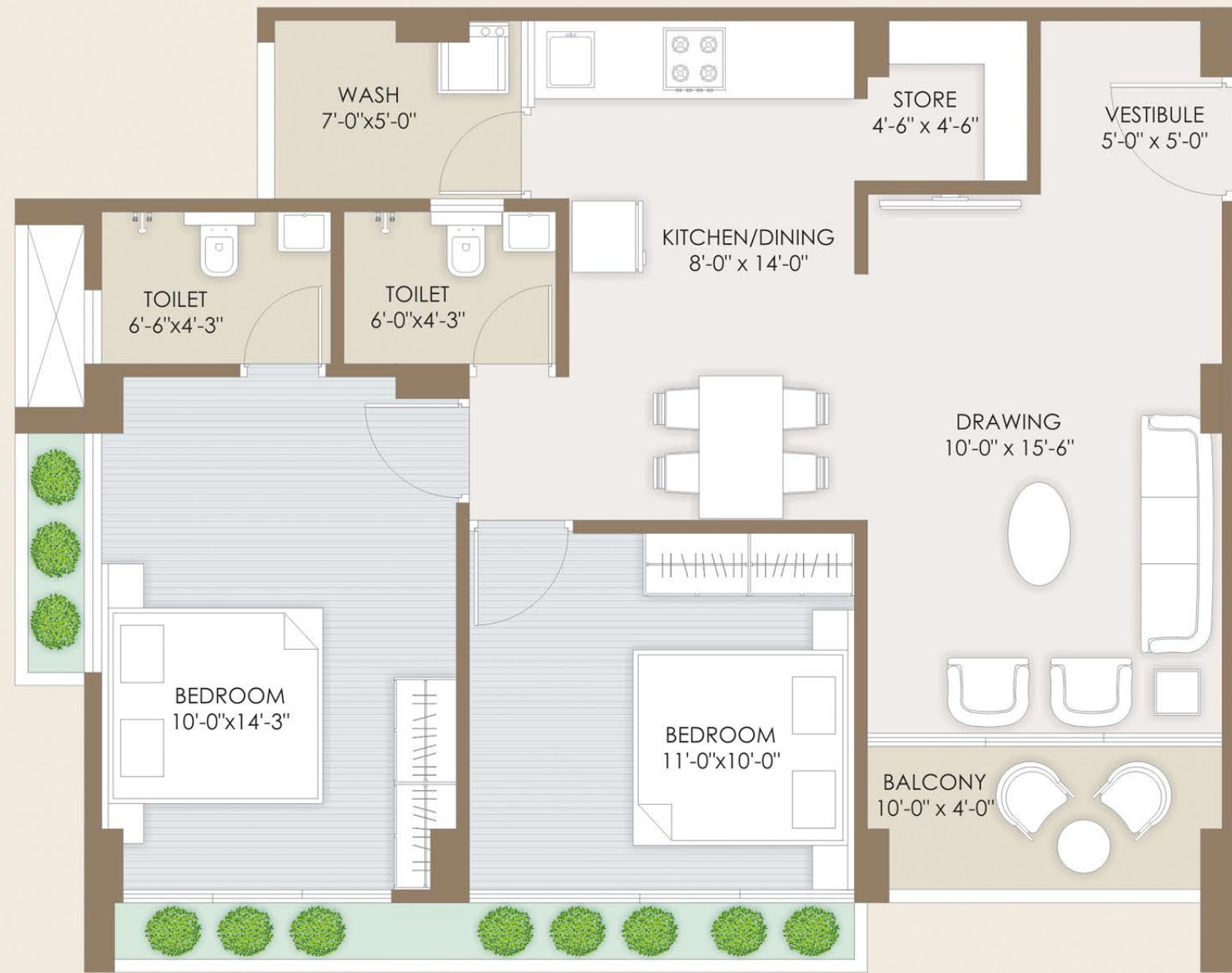
GROUND FLOOR PLAN



1st to 7th FLOOR PLAN



UNIT PLAN - 01
BLOCK - A,B,C,D
2 BHK



SECTION PLAN - 01
BLOCK - A,B,C,D
2 BHK



UNIT PLAN - 02
BLOCK - A,B,C,D
2 BHK



SECTION PLAN - 02
BLOCK - A,B,C,D
2 BHK



UNIT PLAN - 03
BLOCK - E
2 BHK



SECTION PLAN - 03
BLOCK - E
2 BHK



UNIT PLAN - 04
BLOCK - F
2 BHK



SECTION PLAN - 04
BLOCK - F
2 BHK



UNIT PLAN - 05
BLOCK - F
3 BHK



SECTION PLAN - 05
BLOCK - F
3 BHK



UNIT PLAN - 06
BLOCK - G
3 BHK



SECTION PLAN - 06
BLOCK - G
3 BHK





SPECIFICATIONS

STRUCTURE

- Earthquake resistant structure design

FLOORING

- Fully vitrified tiles flooring
- Kota stone flooring in wash yard
- Open terrace with waterproof treatment and tiles/China Mosaic

DOORS AND WINDOWS

- Decorative wooden entrance door
- Other doors are flush doors
- High quality aluminum sliding windows with granite sill

WALL FINISH

- Inside wall : Single coat mala plaster with putty finish
- Outside : Texture finish with water repellent colour

KITCHEN

- Polished granite platform with S.S.Sink
- Glazed tiles dado up to lintel level

BATHROOM AND TOILET

- Anti skid flooring
- Branded plumbing fittings
- Standard quality sanitary ware
- Glazed tiles up to slab level

ELECTRIFICATION

- Concealed ISI copper wiring with M.C.B/E.L.C.B
- Branded modular switches with sufficient electrical points in all rooms
- Provision for A.C., T.V. and geyser electrical point

ELEVATOR

- Two elevators for each block

WATER

- Common underground water tank with pressure pump
- Personal overhead tank per block

SALIENT FEATURES



Basement parking to fulfill parking needs



Two gates for entry/exit



High end elevation with treated architectural features



Decorative common lightings



Attractive elevation lights



Exclusive grand entry

LOCATION MAP



LOCATION

Pushkar Gold

DEVELOPER



ARCHITECT

PRAKALPAN ARCHITECTS

STRUCTURE DESIGN

SHREEJI STRUCTURE

3D AND DESIGN



Disclaimer

• All rights are reserved to Developer for any changes in plan & specification. • GEB, AMC, Stamp duty, Legal charges, VAT, GST Labourcess, Water connection & Initial maintenance contribution will be levied extra. • Change in external elevation shall not be permitted. Internal changes shall be done only with prior permission and shall be charged extra in advance. • Details & dimensions in brochure are indicative & for the tentative representation only which should not be treated as legal documents. • Possession of the Apartment shall be given only after full payment. • Any additional charges or duties levied by the Govt/ local authorities during or after the completion of the scheme will be borne by the purchaser.