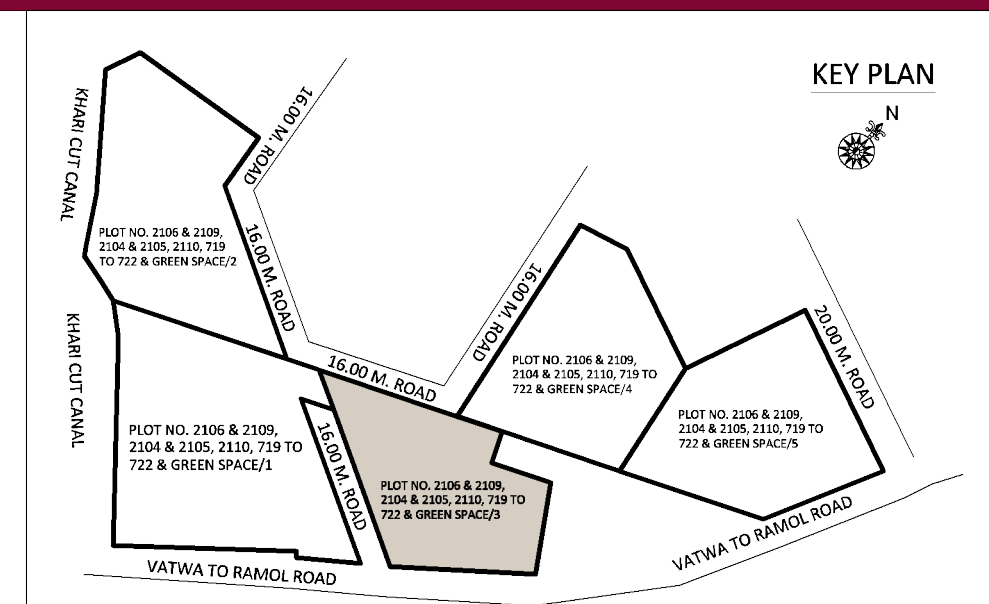


PUSHKAR

INDUSTRIAL HUB

PHASE 4

RERA REG. NO. _____



SPECIFIC NOTES

- Developers reserve the rights for alterations of specifications and design.
- All dimensions and area are approximate, average and subject to variations.
- Irregular payments shall incur interest or cancellation of booking.
- A.M.C., Torrent power, maintenance, all Government taxes, Stamp & Registration, Legal Expenses & society membership fees shall be borne by the members.
- This brochure is not to be treated as a part of the legal documents, It is for the easy display of the project.

SPECIFICATIONS:

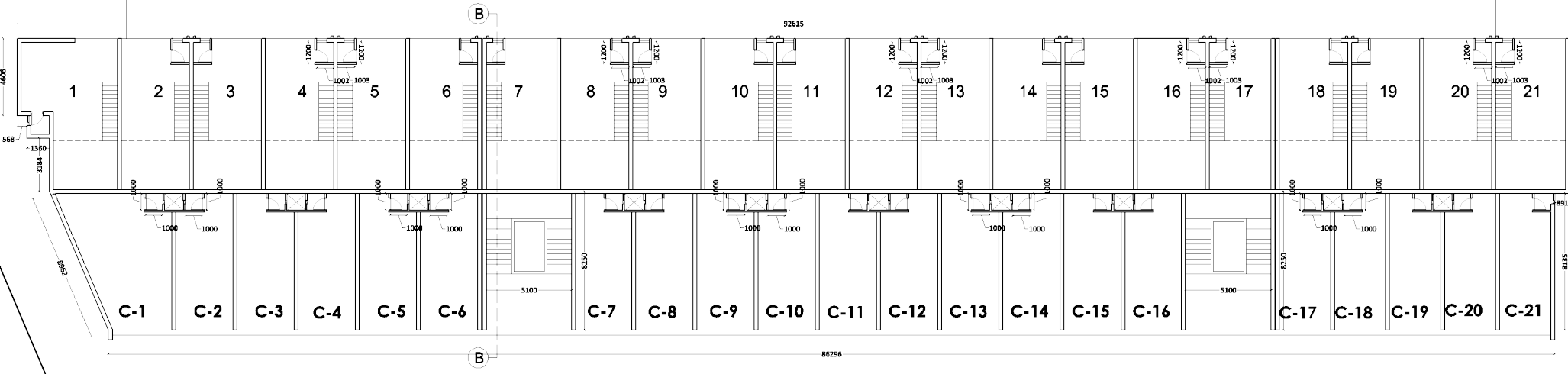
1. MODERN INFRASTRUCTURE
2. BORE FOR WATER SUPPLY
3. LANDSCAPPED COMMON PLOT
4. RCC ROAD
5. CCTV SURVEILLANCE

PROMOTERS:
SOPAN INFRA

CONTACT:
9426554547

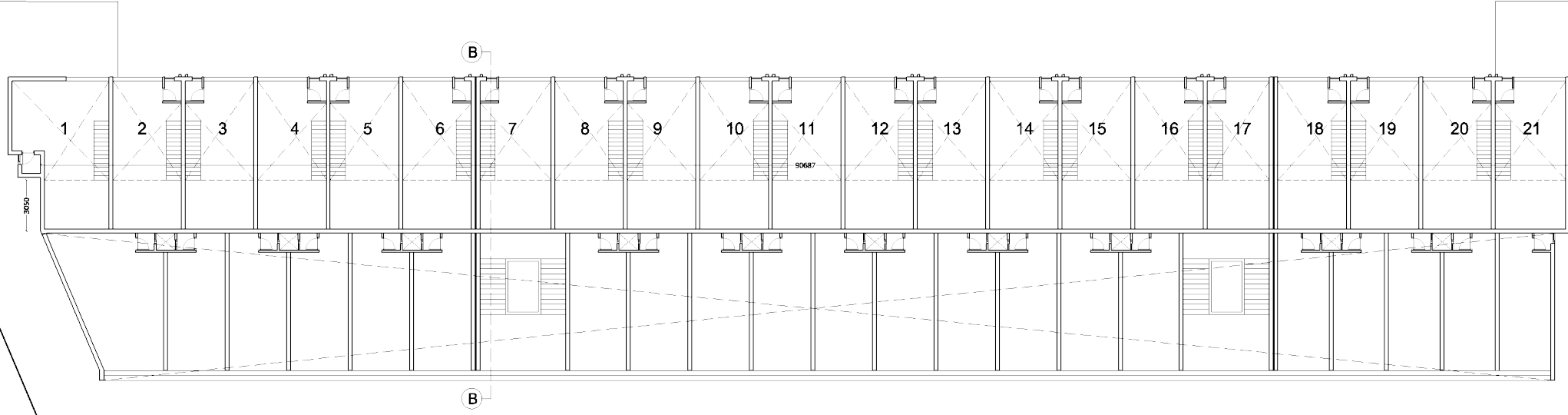
SITE ADDRESS:
PUSHKAR INDUSTRIAL HUB
PHASE-4, TORRENT POWER COMPOUND,
VATVA GIDC, AHMEDABAD

BLOCK A



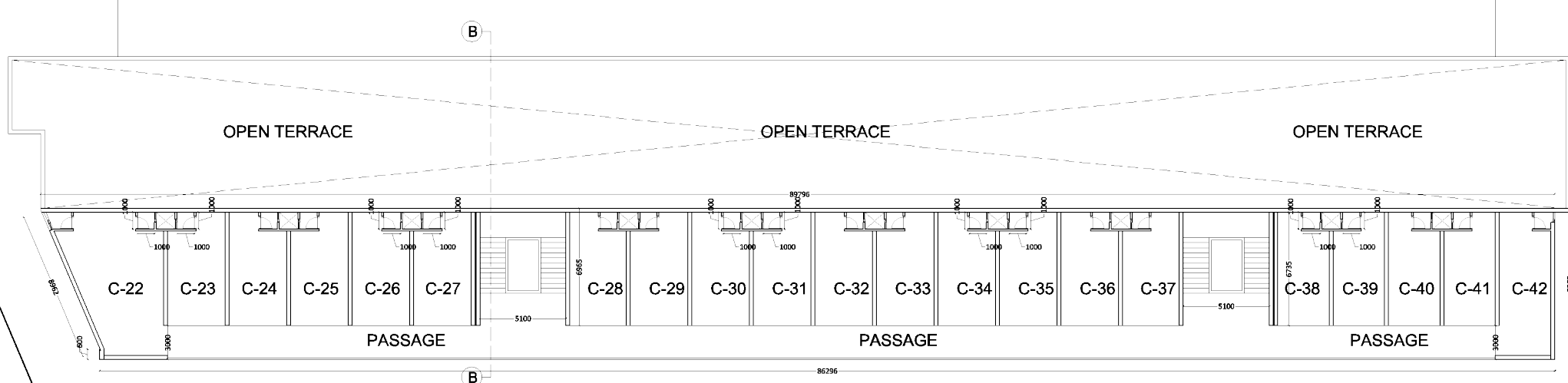
C.P.

BLOCK : A - GROUND FLOOR



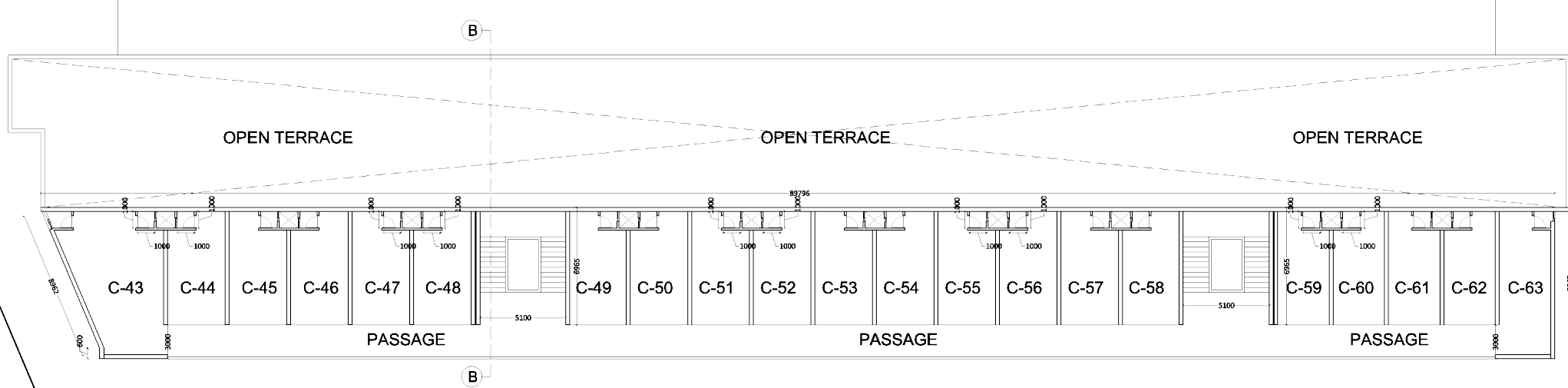
C.P.

BLOCK : A - MEZZANINE FLOOR



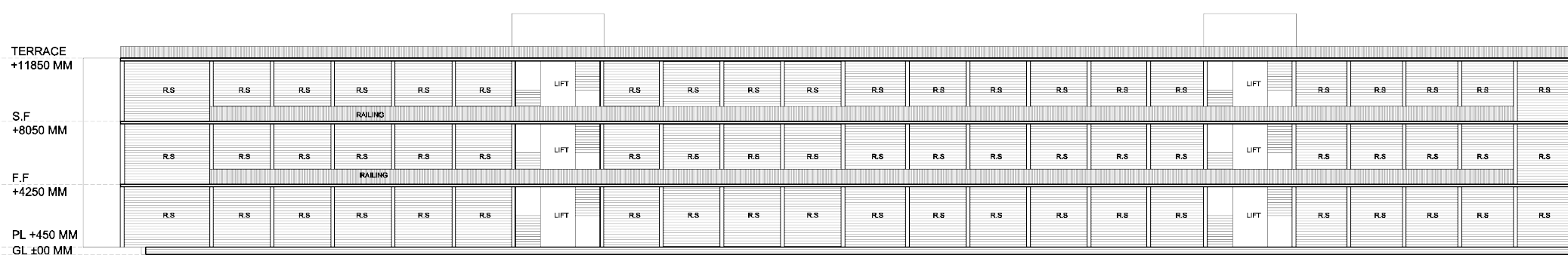
C.P.

BLOCK : A - FIRST FLOOR

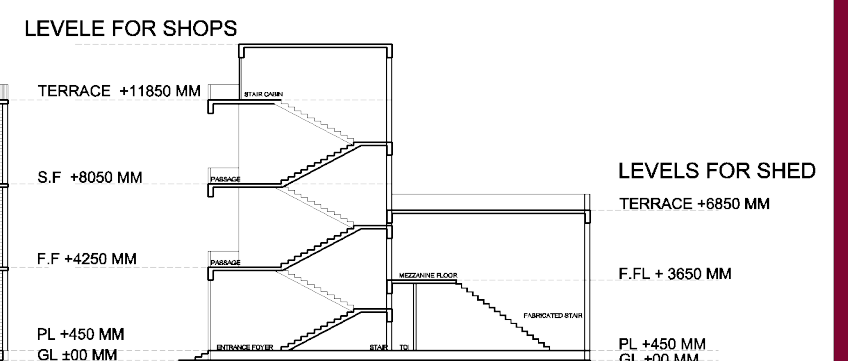


C.P.

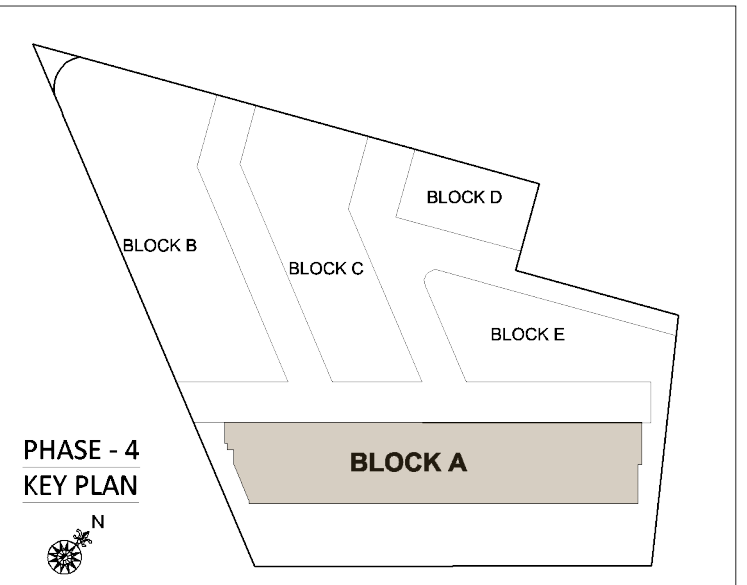
BLOCK : A - SECOND FLOOR



ELEVATION



SECTION BB'



PHASE - 4
KEY PLAN

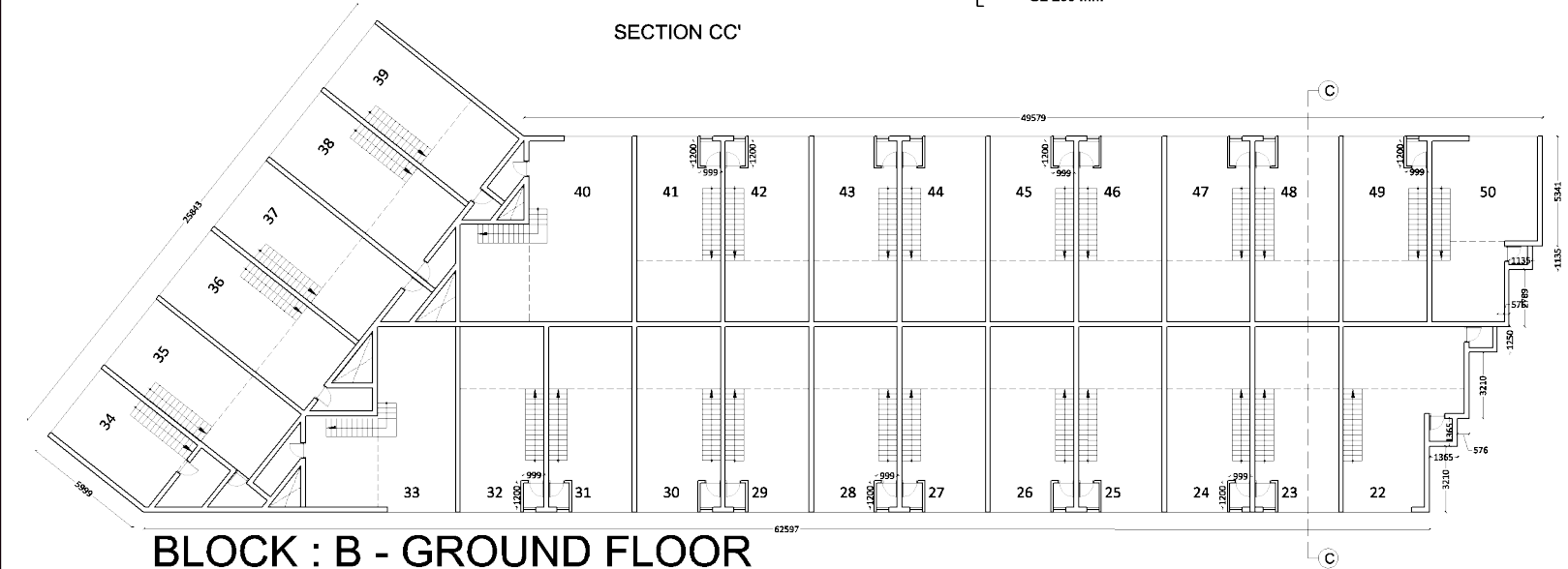
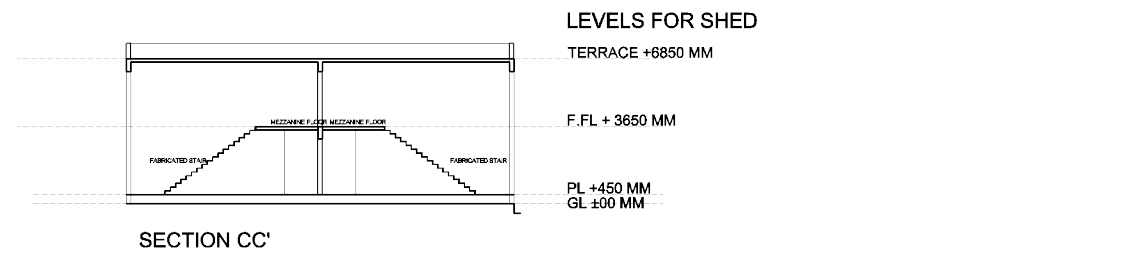
PROMOTERS:
SOPAN INFRA

CONTACT:
9426554547

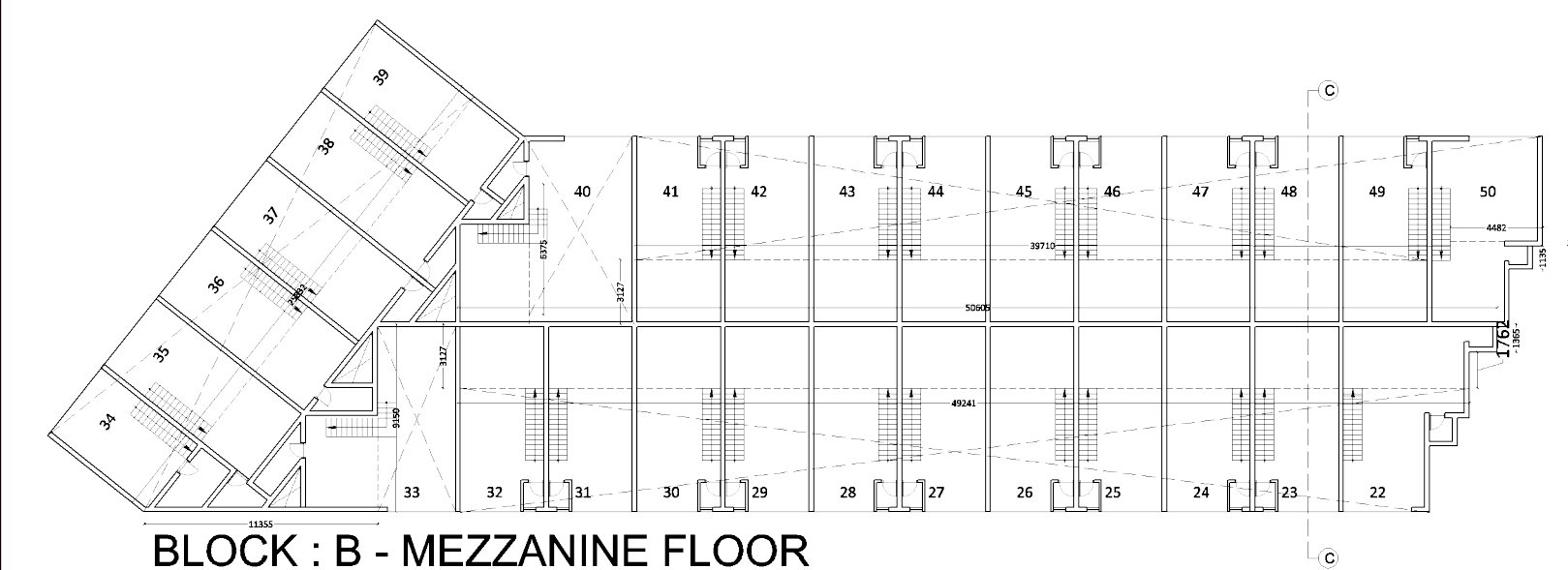
SITE ADDRESS:
PUSHKAR INDUSTRIAL HUB
PHASE-4, TORRENT POWER COMPOUND,
VATWA GIDC, AHMEDABAD

AREA CALCULATION (BLOCK - A)					
SR.	SHED NO.	TOTAL BUILT UP	TOTAL CARPET	MEZZ. BUILT UP	MEZZ. CARPET
1	C-1	46.66	44.75	0.00	0.00
2	C-2	30.11	27.16	0.00	0.00
3	C-3	30.11	27.16	0.00	0.00
4	C-4	30.11	27.16	0.00	0.00
5	C-5	30.11	27.16	0.00	0.00
6	C-6	31.06	26.72	0.00	0.00
7	C-7	30.61	26.72	0.00	0.00
8	C-8	30.11	27.16	0.00	0.00
9	C-9	30.11	27.16	0.00	0.00
10	C-10	30.11	27.16	0.00	0.00
11	C-11	30.11	27.16	0.00	0.00
12	C-12	30.11	27.16	0.00	0.00
13	C-13	30.11	27.16	0.00	0.00
14	C-14	30.11	27.16	0.00	0.00
15	C-15	30.11	27.16	0.00	0.00
16	C-16	30.61	26.72	0.00	0.00
17	C-17	28.03	24.28	0.00	0.00
18	C-18	27.08	24.72	0.00	0.00
19	C-19	27.08	24.72	0.00	0.00
20	C-20	27.08	24.72	0.00	0.00
21	C-21	28.03	25.22	0.00	0.00
22	C-22	49.24	46.59	0.00	0.00
23	C-23	25.00	22.37	0.00	0.00
24	C-24	25.00	22.37	0.00	0.00
25	C-25	25.00	22.37	0.00	0.00
26	C-26	25.00	22.37	0.00	0.00
27	C-27	25.79	22.00	0.00	0.00
28	C-28	25.41	22.00	0.00	0.00
29	C-29	25.00	22.37	0.00	0.00
30	C-30	25.00	22.37	0.00	0.00
31	C-31	25.00	22.37	0.00	0.00
32	C-32	25.00	22.37	0.00	0.00
33	C-33	25.00	22.37	0.00	0.00
34	C-34	25.00	22.37	0.00	0.00
35	C-35	25.00	22.37	0.00	0.00
36	C-36	25.00	22.37	0.00	0.00
37	C-37	25.41	22.00	0.00	0.00
38	C-38	23.28	19.98	0.00	0.00
39	C-39	22.49	20.35	0.00	0.00
40	C-40	22.49	20.35	0.00	0.00
41	C-41	22.49	20.35	0.00	0.00
42	C-42	30.30	26.79	0.00	0.00
43	C-43	49.24	46.59	0.00	0.00
44	C-44	25.00	22.37	0.00	0.00
45	C-45	25.00	22.37	0.00	0.00
46	C-46	25.00	22.37	0.00	0.00
47	C-47	25.00	22.37	0.00	0.00
48	C-48	25.79	22.00	0.00	0.00
49	C-49	25.41	22.00	0.00	0.00
50	C-50	25.00	22.37	0.00	0.00
51	C-51	25.00	22.37	0.00	0.00
52	C-52	25.00	22.37	0.00	0.00
53	C-53	25.00	22.37	0.00	0.00
54	C-54	25.00	22.37	0.00	0.00
55	C-55	25.00	22.37	0.00	0.00
56	C-56	25.00	22.37	0.00	0.00
57	C-57	25.00	22.37	0.00	0.00
58	C-58	25.41	22.00	0.00	0.00
59	C-59	23.28	19.98	0.00	0.00
60	C-60	22.49	20.35	0.00	0.00
61	C-61	22.49	20.35	0.00	0.00
62	C-62	22.49	20.35	0.00	0.00
63	C-63	30.3	26.79	0.00	0.00
64	1	52.56	47.34	14.47	12.41
65	2	39.35	35.94	13.61	11.44
66	3	39.35	35.94	13.61	11.44
67	4	39.35	35.94	13.61	11.44
68	5	39.35	35.94	13.61	11.44
69	6	39.35	35.94	13.61	11.44
70	7	39.35	35.94	13.61	11.44
71	8	39.35	35.94	13.61	11.44
72	9	39.35	35.94	13.61	11.44
73	10	39.35	35.94	13.61	11.44
74	11	39.35	35.94	13.61	11.44
75	12	39.35	35.94	13.61	11.44
76	13	39.35	35.94	13.61	11.44
77	14	39.35	35.94	13.61	11.44
78	15	39.35	35.94	13.61	11.44
79	16	39.35	35.94	13.61	11.44
80	17	39.35	35.94	13.61	11.44
81	18	39.35	35.94	13.61	11.44
82	19	39.35	35.94	13.61	11.44
83	20	39.35	35.94	13.61	11.44
84	21	40.50	35.94	13.96	11.44
85	TOTAL STAIR	226.23	0.00	0.00	0.00
86	TOTAL PASSAGE	345.66	0.00	0.00	0.00
	TOTAL	3143.96	2318.33	287.02	241.21

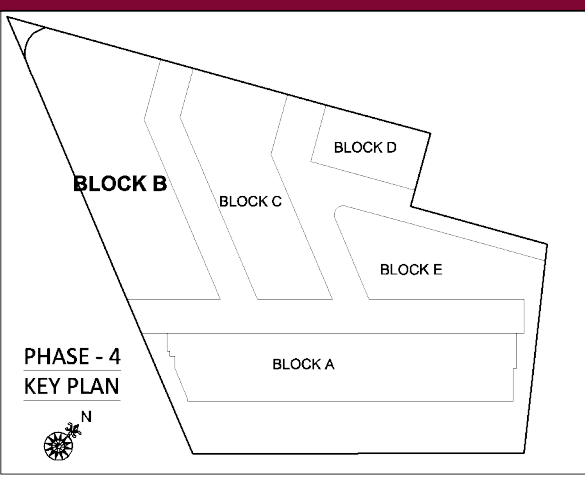
BLOCK B



BLOCK : B - GROUND FLOOR

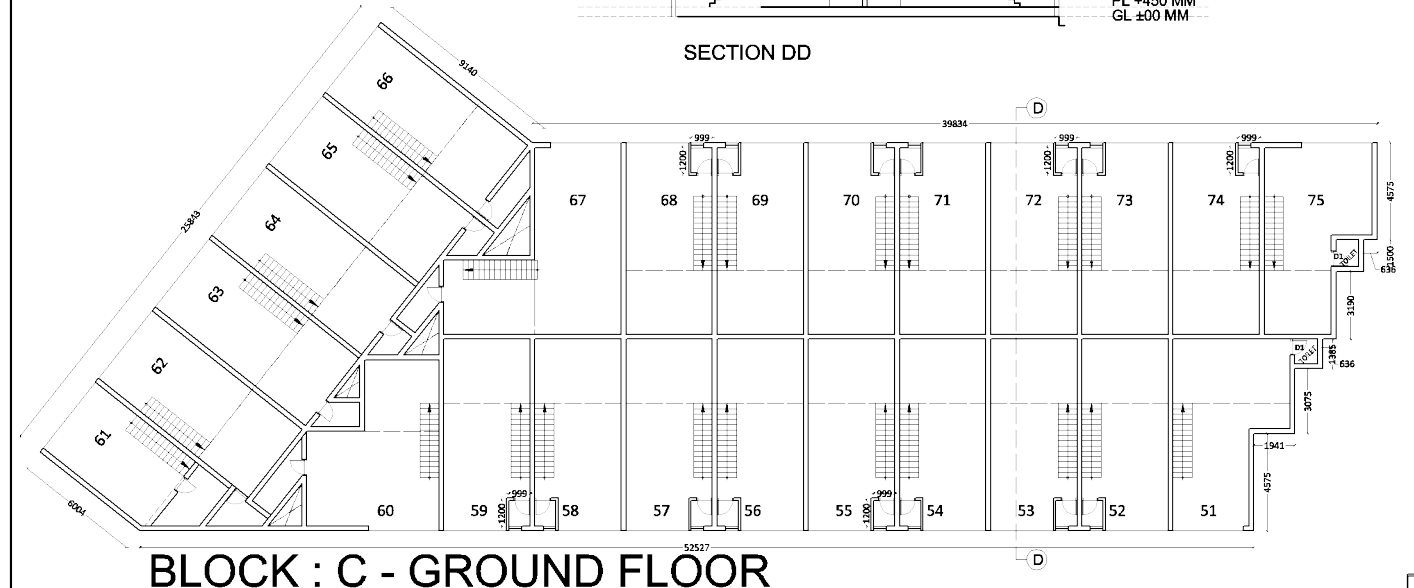
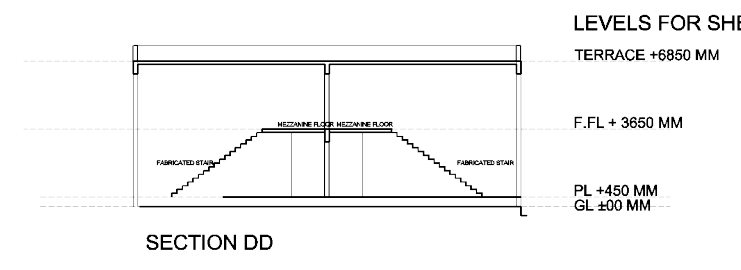


BLOCK : B - MEZZANINE FLOOR

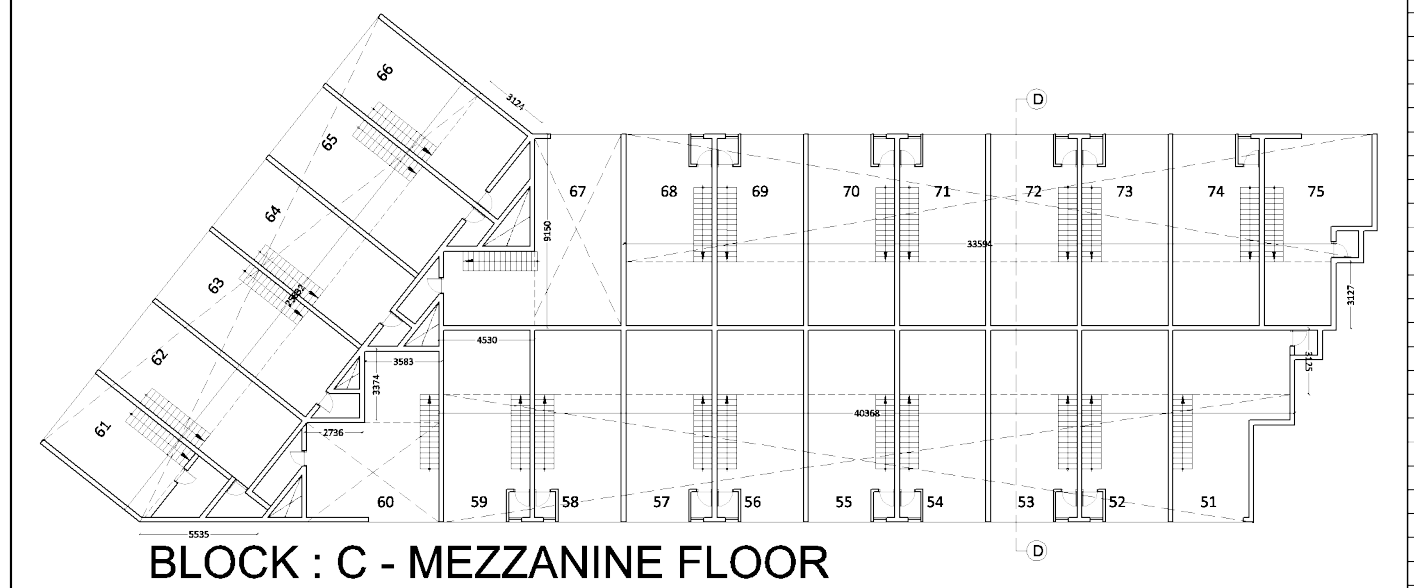


AREA CALCULATION (BLOCK - B)					
SR.	SHED NO.	TOTAL BUILT UP	TOTAL CARPET	MEZZ. BUILT UP	MEZZ. CARPET
1	22	51.95	46.03	21.37	19.09
2	23	39.35	36.00	13.45	12.26
3	24	39.33	36.00	13.45	12.27
4	25	39.33	36.00	13.45	12.27
5	26	39.33	36.00	13.45	12.26
6	27	39.33	36.00	13.45	12.26
7	28	39.33	36.00	13.45	12.27
8	29	39.33	36.00	13.45	12.26
9	30	39.32	36.00	13.45	12.26
10	31	39.32	36.00	13.45	12.26
11	32	39.32	36.00	13.45	12.26
12	33	65.61	53.48	24.45	19.19
13	34	33.28	29.37	7.38	5.38
14	35	43.31	39.59	17.4	15.08
15	36	43.84	39.94	20.81	15.42
16	37	43.09	39.45	20.4	14.93
17	38	42.99	39.47	16.89	14.96
18	39	46.34	37.40	17.61	13.58
19	40	66.35	62.54	17.00	15.7
20	41	39.37	36.00	13.45	12.26
21	42	39.36	36.00	13.45	12.25
22	43	39.36	36.00	13.45	12.25
23	44	39.36	36.00	13.45	12.25
24	45	39.36	36.00	13.45	12.25
25	46	39.35	36.00	13.45	12.24
26	47	39.35	36.00	13.45	12.24
27	48	39.35	36.00	13.45	12.24
28	49	39.34	36.00	13.45	12.23
29	50	45.50	40.78	16.41	14.05
TOTAL		1229.75	1112.05	435.27	380.22

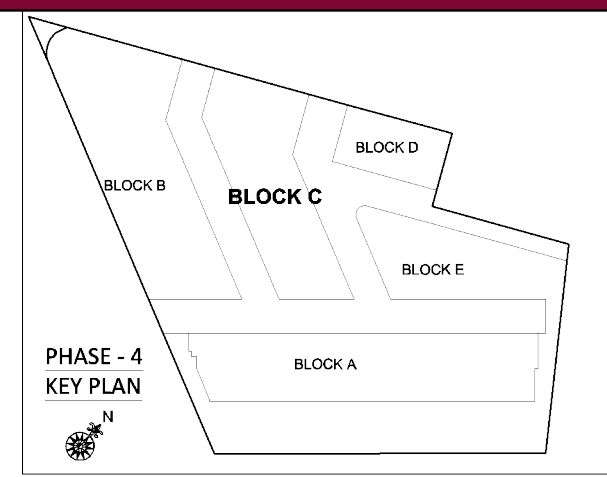
BLOCK C



BLOCK : C - GROUND FLOOR

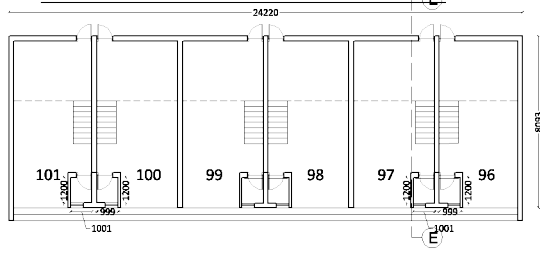


BLOCK : C - MEZZANINE FLOOR

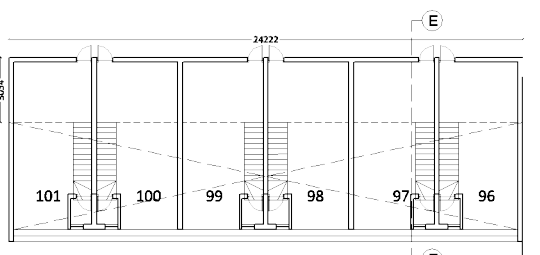


AREA CALCULATION (BLOCK - C)					
SR.	SHED NO.	TOTAL BUILT UP	TOTAL CARPET	MEZZ. BUILT UP	MEZZ. CARPET
1	51	46.70	41.24	18.3	18.09
2	52	39.35	36.00	13.44	12.27
3	53	39.35	36.00	13.44	12.27
4	54	39.35	36.00	13.44	12.27
5	55	39.35	36.00	13.44	12.27
6	56	39.35	36.00	13.44	12.26
7	57	39.35	36.00	13.44	12.26
8	58	39.35	36.00	13.44	12.26
9	59	39.44	36.00	13.44	12.26
10	60	50.85	43.91	14.93	11.81
11	61	33.30	29.60	7.38	5.55
12	62	43.33	39.62	17.25	15.08
13	63	43.88	39.09	18	14.56
14	64	43.69	38.67	16.00	14.14
15	65	42.31	38.97	16.40	14.44
16	66	44.27	39.42	22.5	15.58
17	67	63.31	53.58	20.90	17.99
18	68	39.35	36.00	13.44	12.26
19	69	39.35	36.00	13.44	12.26
20	70	39.35	36.00	13.44	12.27
21	71	39.35	36.00	13.44	12.27
22	72	39.35	36.00	13.44	12.27
23	73	39.35	36.00	13.44	12.27
24	74	39.35	36.00	13.44	12.25
25	75	42.80	38.01	10.92	9.48
TOTAL		1044.78	942.11	364.18	320.69

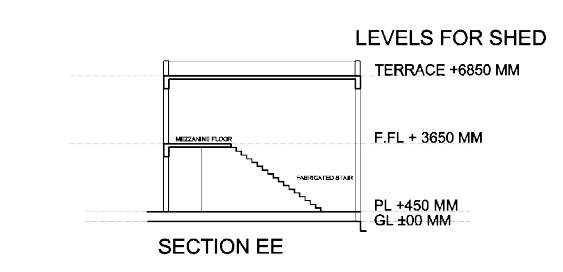
BLOCK D



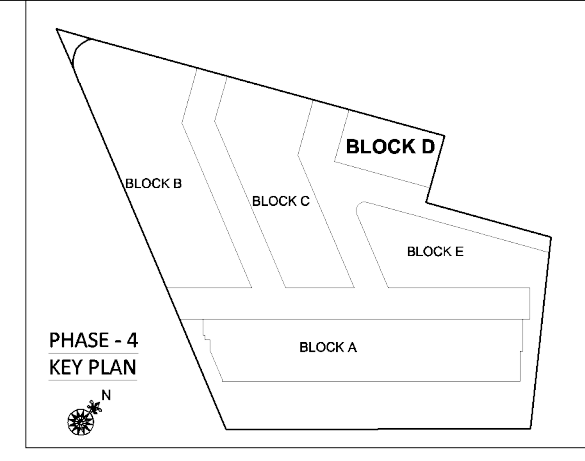
BLOCK : D - GROUND FLOOR



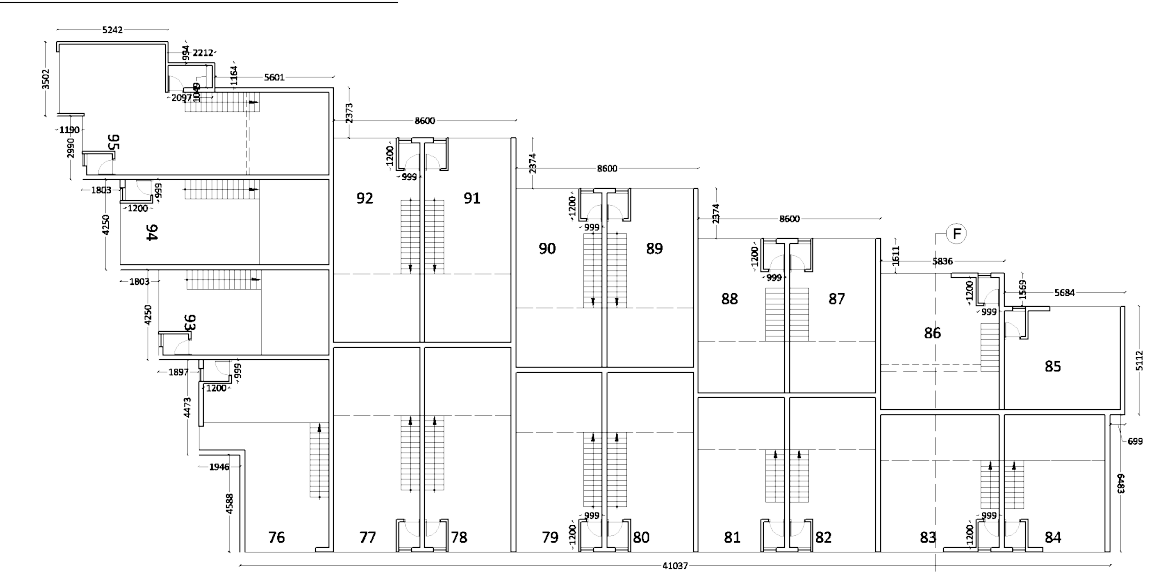
BLOCK : D - MEZZANINE FLOOR



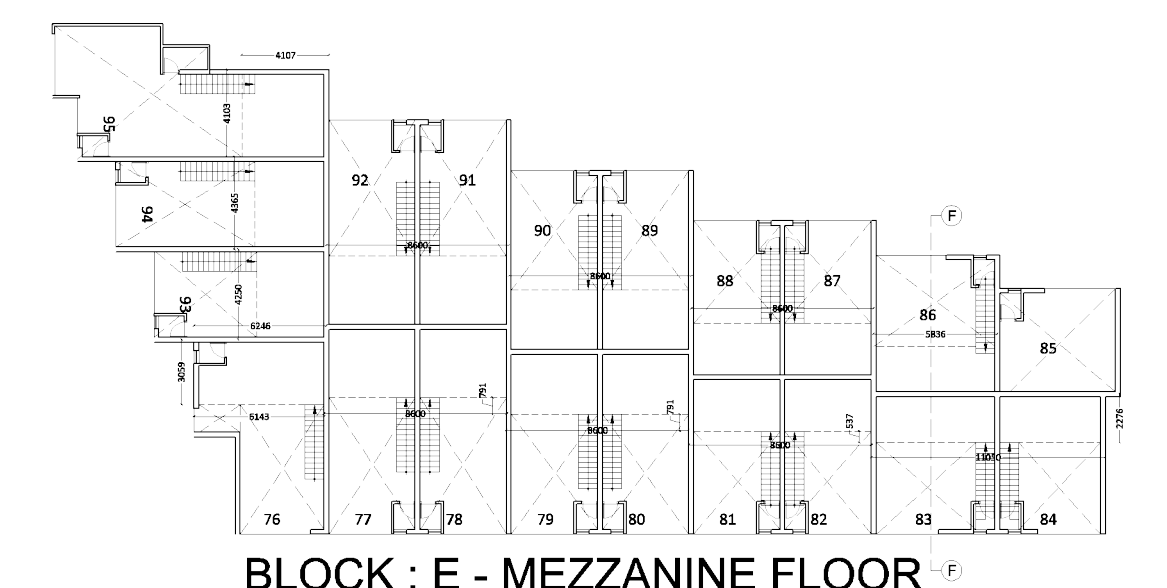
AREA CALCULATION (BLOCK - D)					
SR.	SHED NO.	TOTAL BUILT UP	TOTAL CARPET	MEZZ. BUILT UP	MEZZ. CARPET
1	96	32.67	28.89	12.33	10.42
2	97	32.67	29.77	12.33	10.74
3	98	32.67	29.77	12.33	10.74
4	99	32.67	29.77	12.33	10.75
5	100	32.67	29.77	12.33	10.75
6	101	32.67	28.89	12.33	10.41
TOTAL		196.02	176.86	73.98	63.81



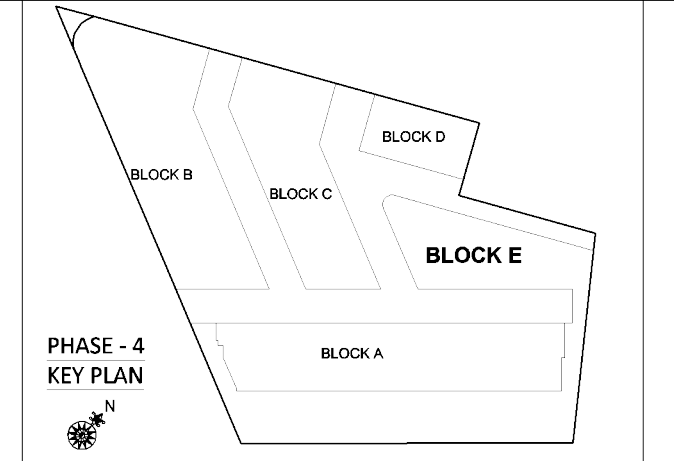
BLOCK E



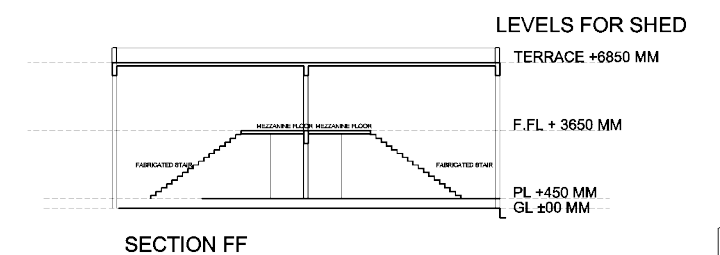
BLOCK : E - GROUND FLOOR



BLOCK : E - MEZZANINE FLOOR



AREA CALCULATION (BLOCK - E)					
SR.	SHED NO.	TOTAL BUILT UP	TOTAL CARPET	MEZZ. BUILT UP	MEZZ. CARPET
1	76	48.38	43.54	19.07	17.37
2	77	42.04	38.49	14.35	13.11
3	78	42.04	38.49	14.43	13.11
4	79	36.94	33.66	12.64	11.5
5	80	36.94	33.66	12.73	11.5
6	81	31.83	28.83	10.94	9.89
7	82	31.83	28.83	11	9.89
8	83	38.50	35.16	13.28	12.11
9	84	33.73	29.83	11.6	10.27
10	85	29.16	25.48	0.00	0.00
11	86	38.50	34.98	13.2	12.05
12	87	31.7	28.7	11	9.93
13	88	31.7	28.7	11	9.93
14	89	37.07	33.53	12.64	11.5
15	90	36.8	33.53	12.64	11.5
16	91	42.18	39.71	14.35	13.11
17	92	41.9	39.75	14.35	13.11
18	93	34.83	31.49	14.05	12.84
19	94	42.49	38.74	14.42	13.17
20	95	65.54	59.23	17.05	15.02
TOTAL		774.1	704.33	254.74	230.91



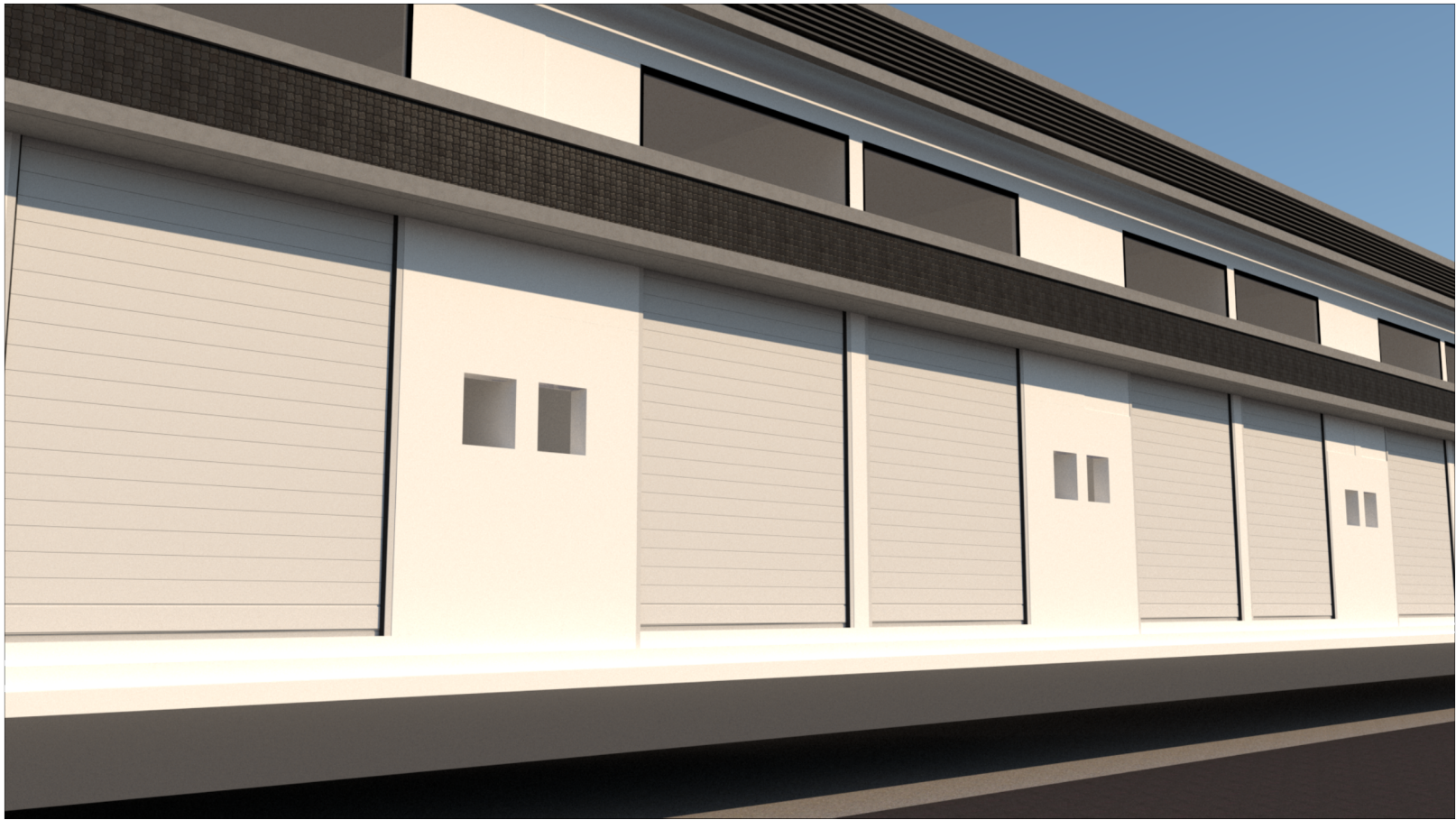
PROMOTERS:
SOPAN INFRA

CONTACT:
9426554547

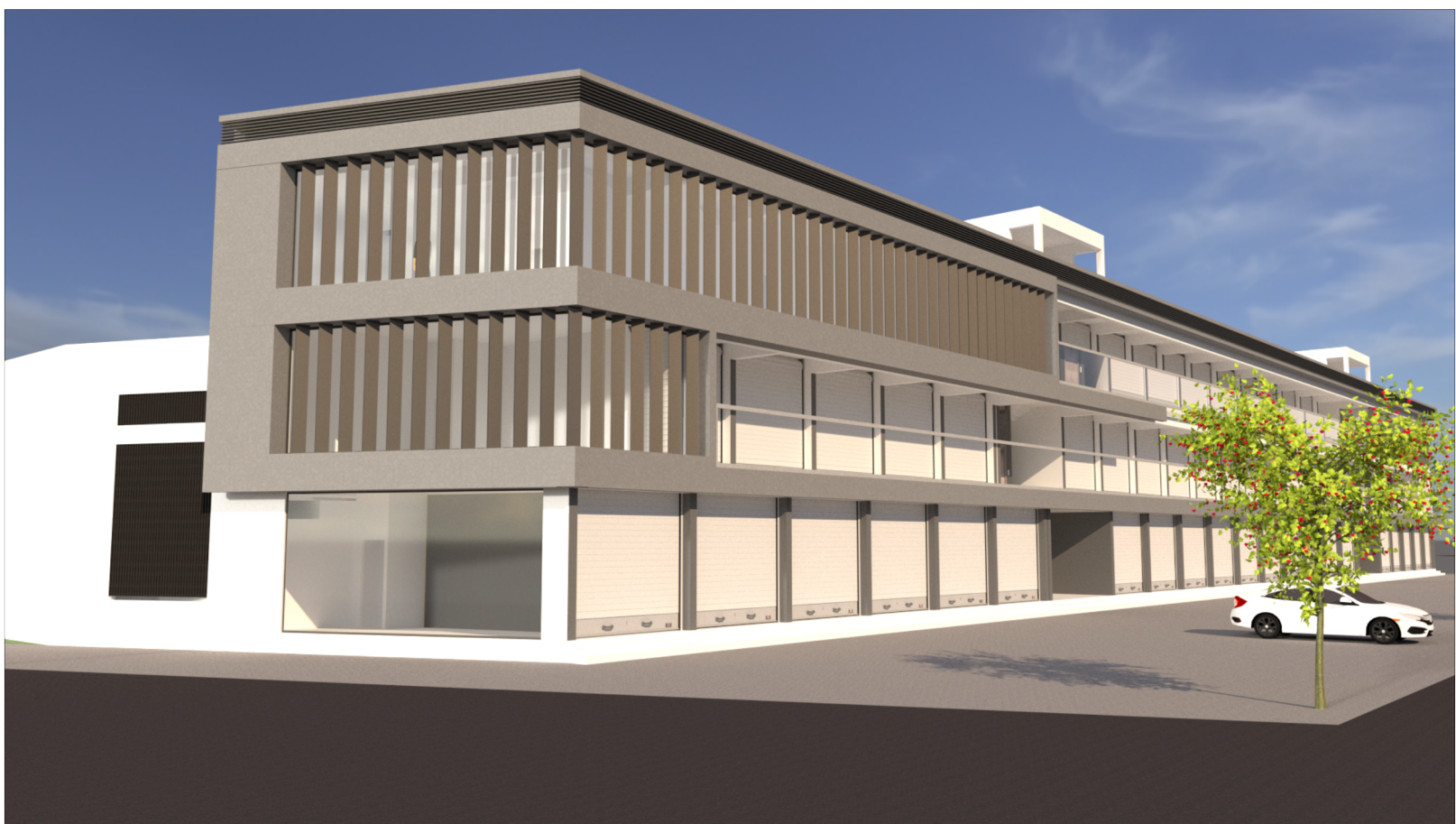
SITE ADDRESS:
PUSHKAR INDUSTRIAL HUB
PHASE-4, TORRENT POWER COMPOUND,
VATWA GIDC, AHMEDABAD



VIEW 1



VIEW 2



VIEW 3

NOTE : ACTUAL ELEVATION MAY DIFFER FROM THE SHOWN GRAPHICS. DEVELOPERS RESERVE RIGHTS TO CHANGE THE ELEVATION.

**PROMOTERS:
SOPAN INFRA**

**CONTACT:
9426554547**

**SITE ADDRESS:
PUSHKAR INDUSTRIAL HUB
PHASE-4, TORRENT POWER COMPOUND,
VATWA GIDC, AHMEDABAD**