

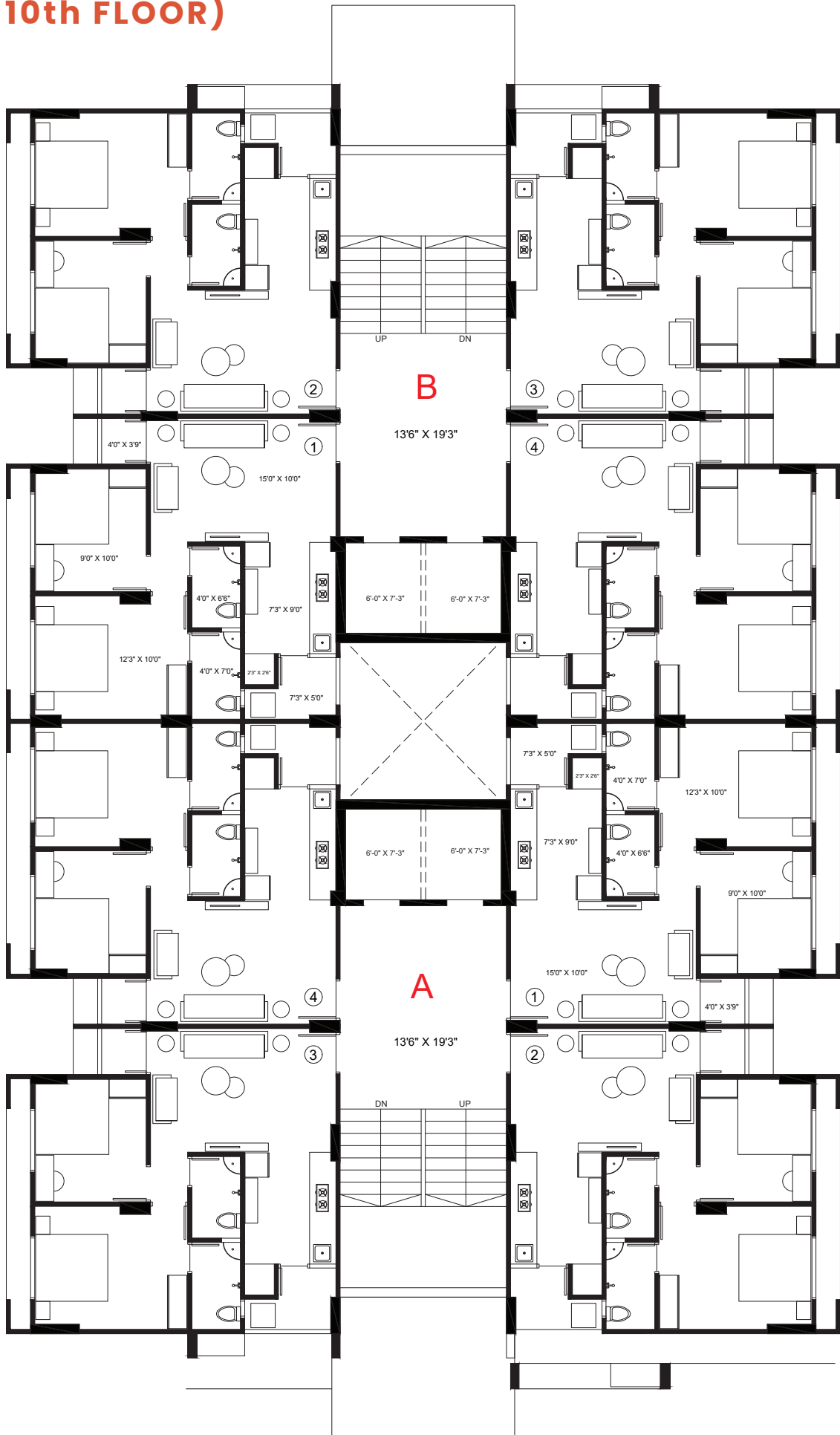
# PEARL HEIGHTS

# LAYOUT PLAN

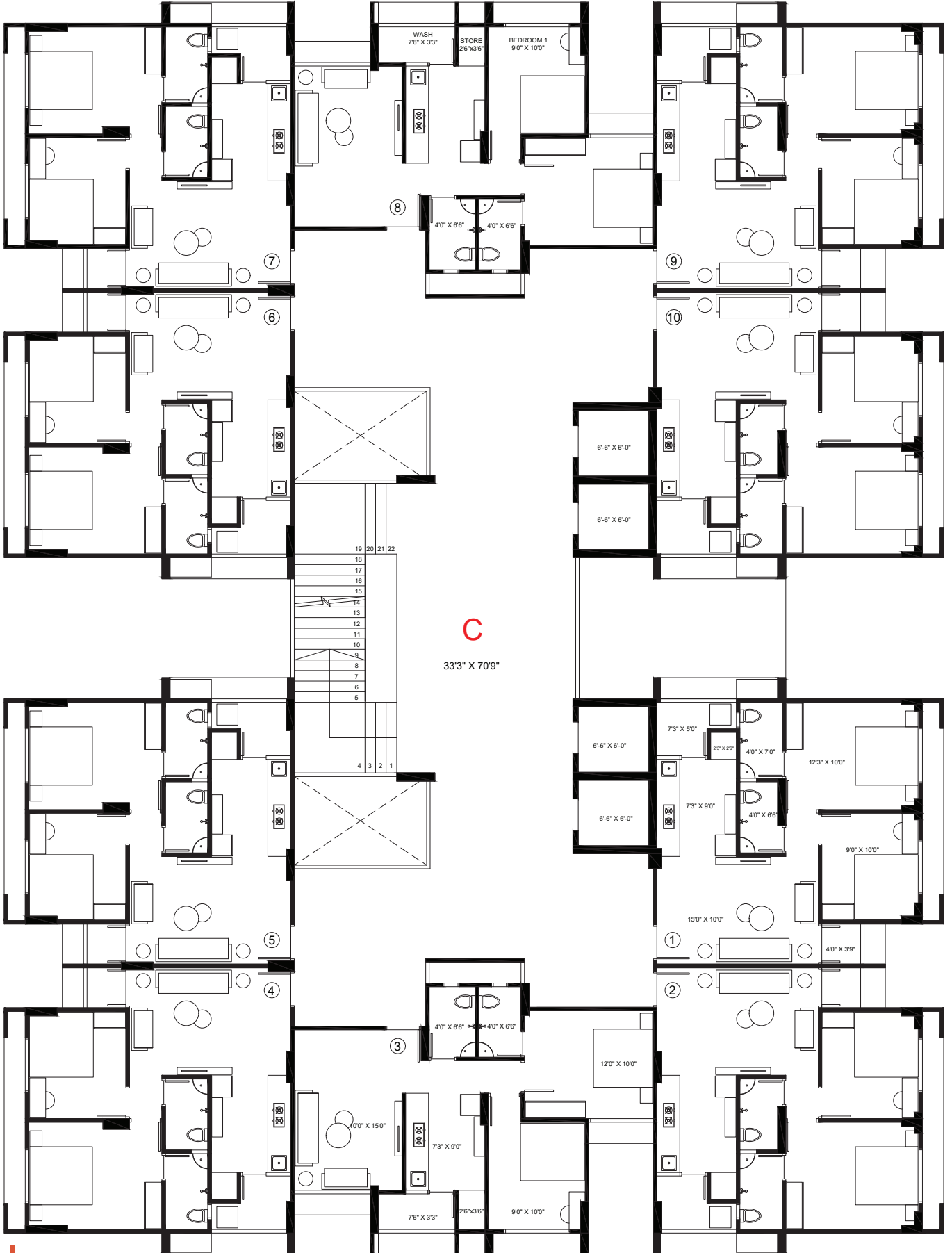


ENTRY

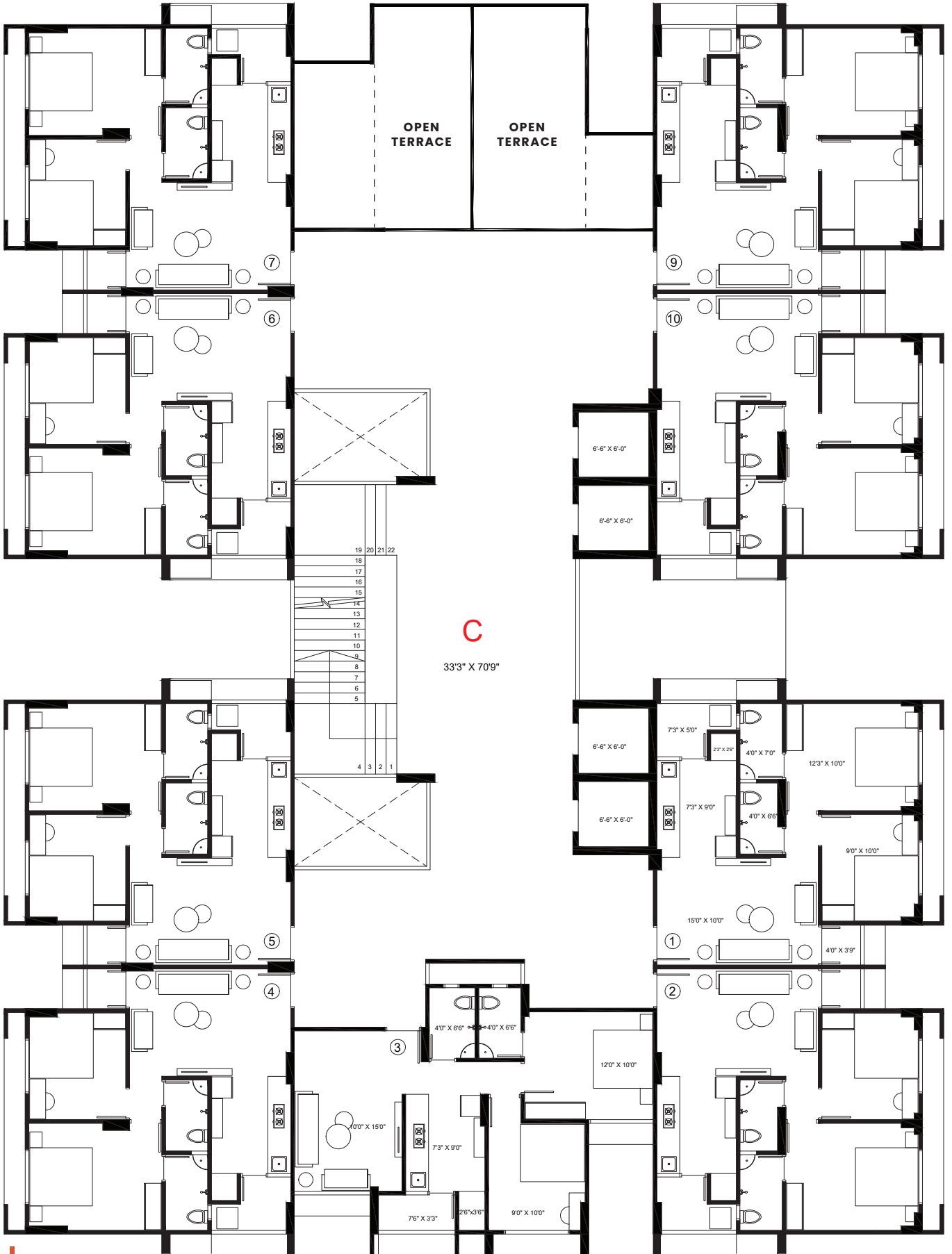
# TYPICAL FLOOR PLAN BLOCK A & B (1st TO 10th FLOOR)



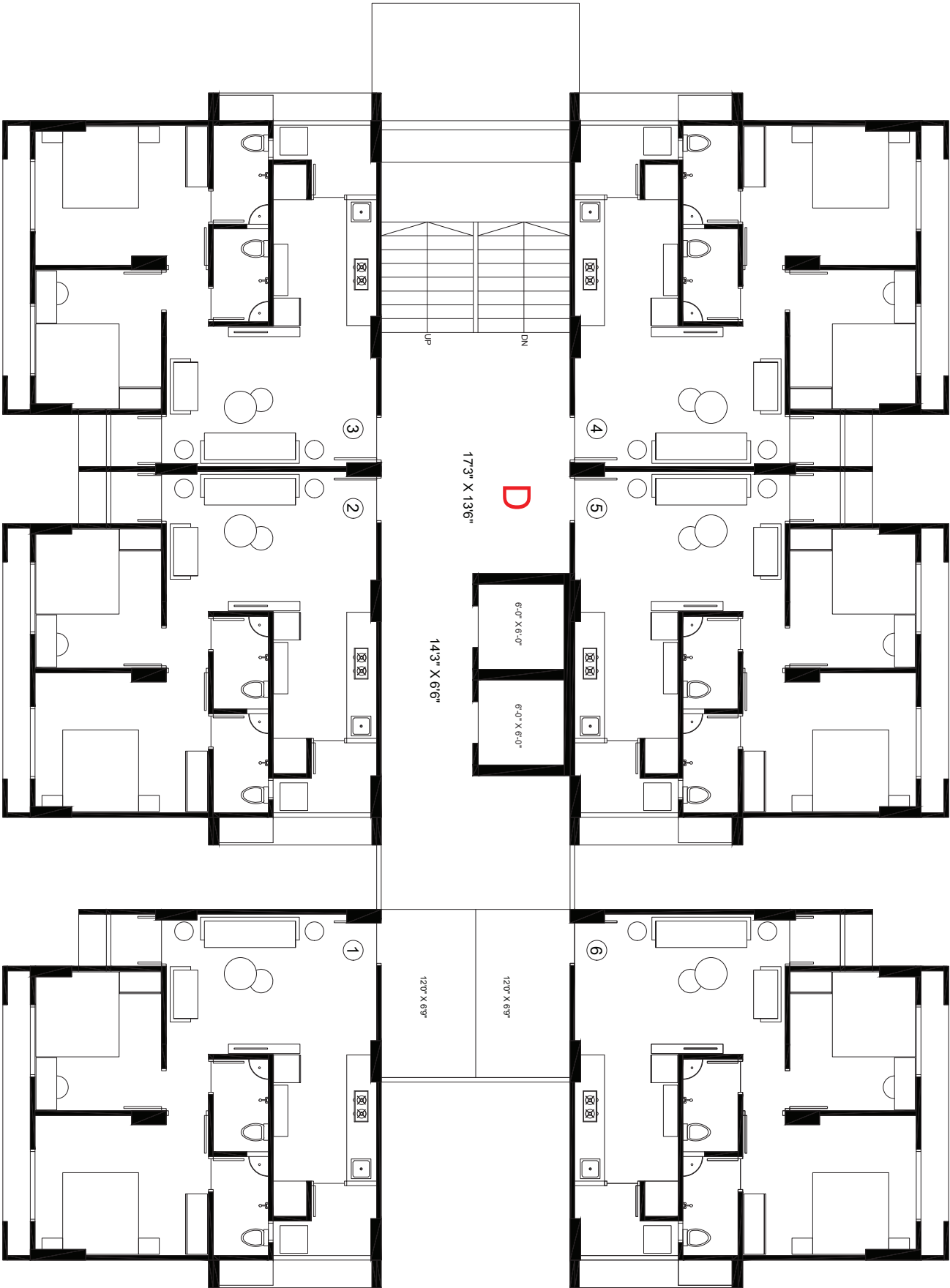
# TYPICAL FLOOR PLAN BLOCK C (1st TO 9th FLOOR)



# TYPICAL FLOOR PLAN BLOCK C (10th FLOOR)



# TYPICAL FLOOR PLAN BLOCK D (1st TO 10th FLOOR)



# PEARL HEIGHTS

## SPECIFICATIONS

### STRUCTURE

- RCC Framed Structure.

### PLASTER

- External double coat sandface plaster.
- Internal plaster.

### FLOORING

- Vitrified tiles in living, dining and all other bed rooms.

### KITCHEN

- Granite counter
- Tiles in flooring and dado upto 7' heights.
- Kota flooring and ceramic dado in utility.

### PAINTING

- External walls with acrylic water proofing paint.
- Putty on all internal wall
- All railings in enamel paint.

### DOORS / WINDOWS

- Decorative main entrance door with wooden frame and all other doors with wooden flush door shutters.
- Powder coated aluminum windows.

### TOILETS

- Anti-skid ceramic tiles for flooring.
- Designer superior quality tiles on walls up to lintel level.
- All bathrooms with standard quality CP fittings.
- Water proofing treatment in all this area.

### TERRACE

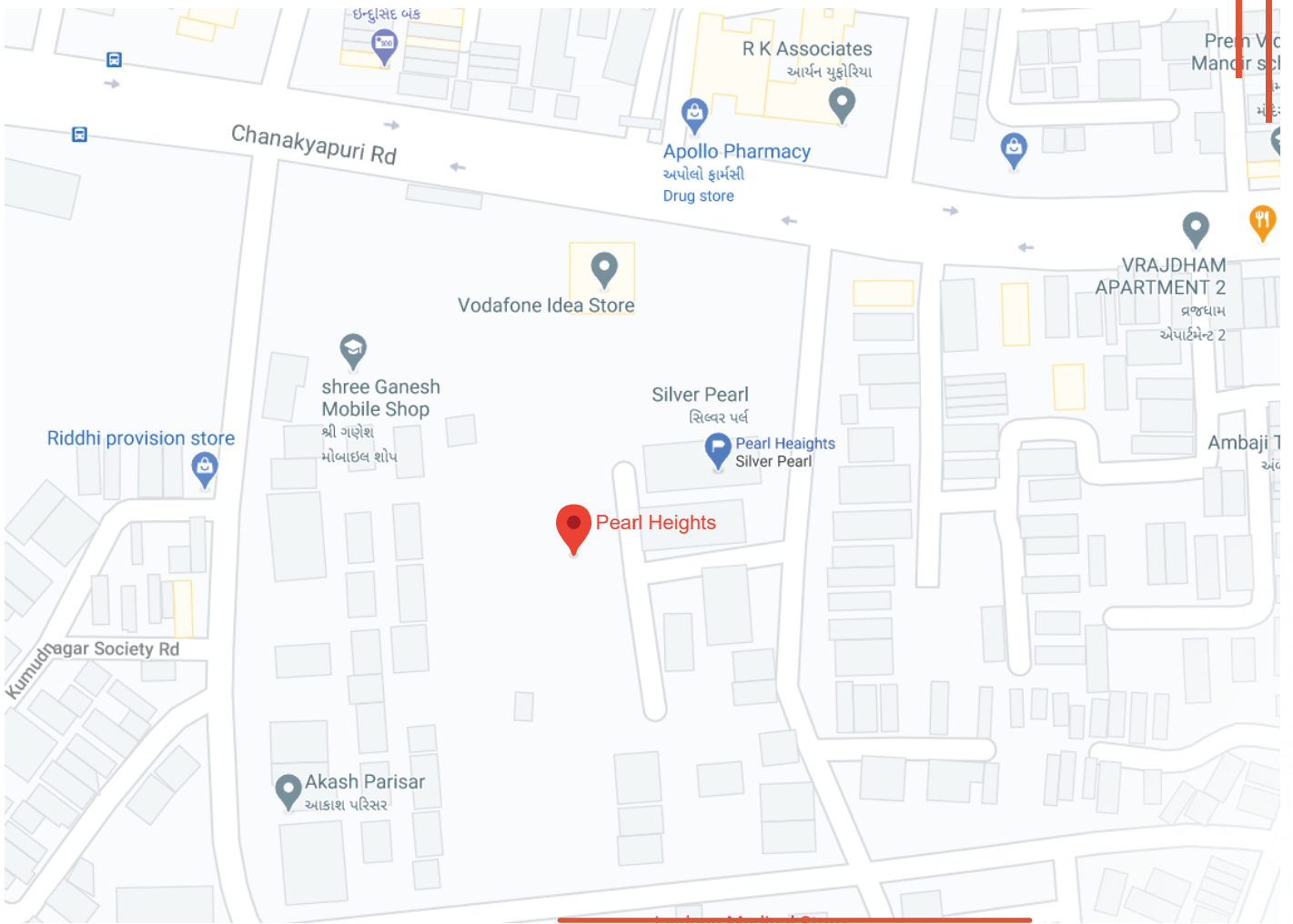
- Water proofing treatment & china mosaic for heat reflection on common terrace.

### ELECTRIFICATION

- All electrical wiring is concealed with PVC pipes, modular switches and centralized distribution board with MCB's for total safety and protection.
- Sufficient power outlet and light points provided.

### WATER & DRAINAGE

- Rigid PVC pipes for drainage & water supply.
- Uninterrupted 24 hours water supply through own borewell.



# PEARL HEIGHTS

A project by:



Architect



**NB DEVELOPER LLP**

Pearl Heights, B/h Silver Pearl,

Nr, S.G.Highway, Ghatlodiya, Ahmedabad-380061