



RAMESHWARAM
KESHAV HEIGHTS

2 BHK LUXURIOUS APARTMENTS

THE EPITOME OF FINE LIVING...



RAMESHWARAM
KESHAV HEIGHTS

2 BHK LUXURIOUS APARTMENTS

Rameshwaram Keshav Heights is a magnificent 2 BHK apartment initiative featuring 208 apartments in the project that includes every comfort, convenience, and creativity right where you live. The idyllic serene surroundings amidst a 6250 sq. yard plot area, renders consistent peace and tranquillity coupled with a sense of well-being within and in its environs. These homes are stipulated to be stylish, royal, and exemplary abodes that feature elegant designing, spatial brilliance, and impeccable quality of construction too!



The rare Arch of Opulence...

Keshav Heights touches the pinnacle of elegance right from its brilliant gateway...



Exquisite
Entrance



Royal
Elevation



Attractive
Foyer



Majestic Towers of immaculate Beauty...

Unravel the majestic nature of the structures,
as glowing towers ensure holistic benefits for its residents.



Environment



Ambience



Connectivity

The Enthralling view of Magnificence

A terrific elevation beckons achievement, as the towers touch the sky to host a definitive lifestyle like no other.





The Strategic Location of Grandeur

Enjoy connectivity to all important places that add to your lifestyle and sustenance in more ways than one!



Schools
Walking distance



Brts Stand
0.50 km.



Restaurants
0.50 km.



Temple
0.50 km.



Colleges
1.00 km.



Garden
1.00 km.



Hospitals
1.00 km.



Malls
1.00 km.



Diamond Bourse
4.00 km.



Multiplexes
4.50 km.



Airport
7.00 km.



Textile Market
7.00 km.



4 Towers
 13 Floors
 4 Apartments on Each Floor
 9250 Sq. ft. Lush Green Garden

LEGEND

- 01 Entry/ Exit
- 02 Guard Room
- 03 Bus Pick-up Zone
- 04 Party Lawn
- 05 Garden with Sitting
- 06 Club House
- 07 Gazebo with Sitting
- 08 Senior Citizen Sitting
- 09 Kids' Play Zone
- 10 Multipurpose Court
- 11 Parking
- 12 Water Body



*The Sylvan
Nature at its core...*

Surrounded by breath-taking structures, nature explores its heart
and spreads its bounty through the mesmerizing central garden...



*Fascinating abodes,
extraordinaire...*

By embracing its compact setting, Keshav Heights elevates its structural design amidst a garden view, a rousing clubhouse and its remarkable facilities too.



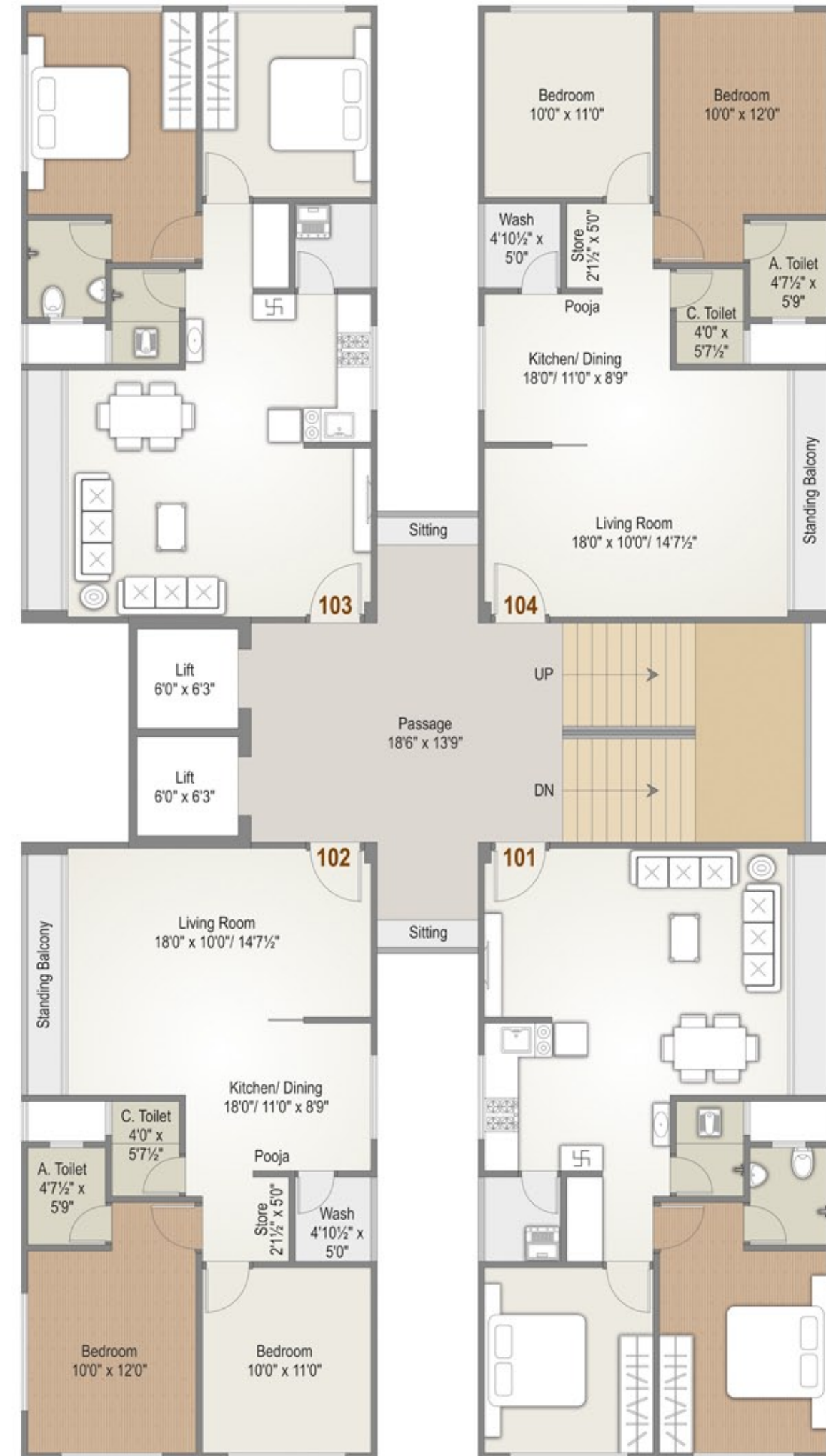
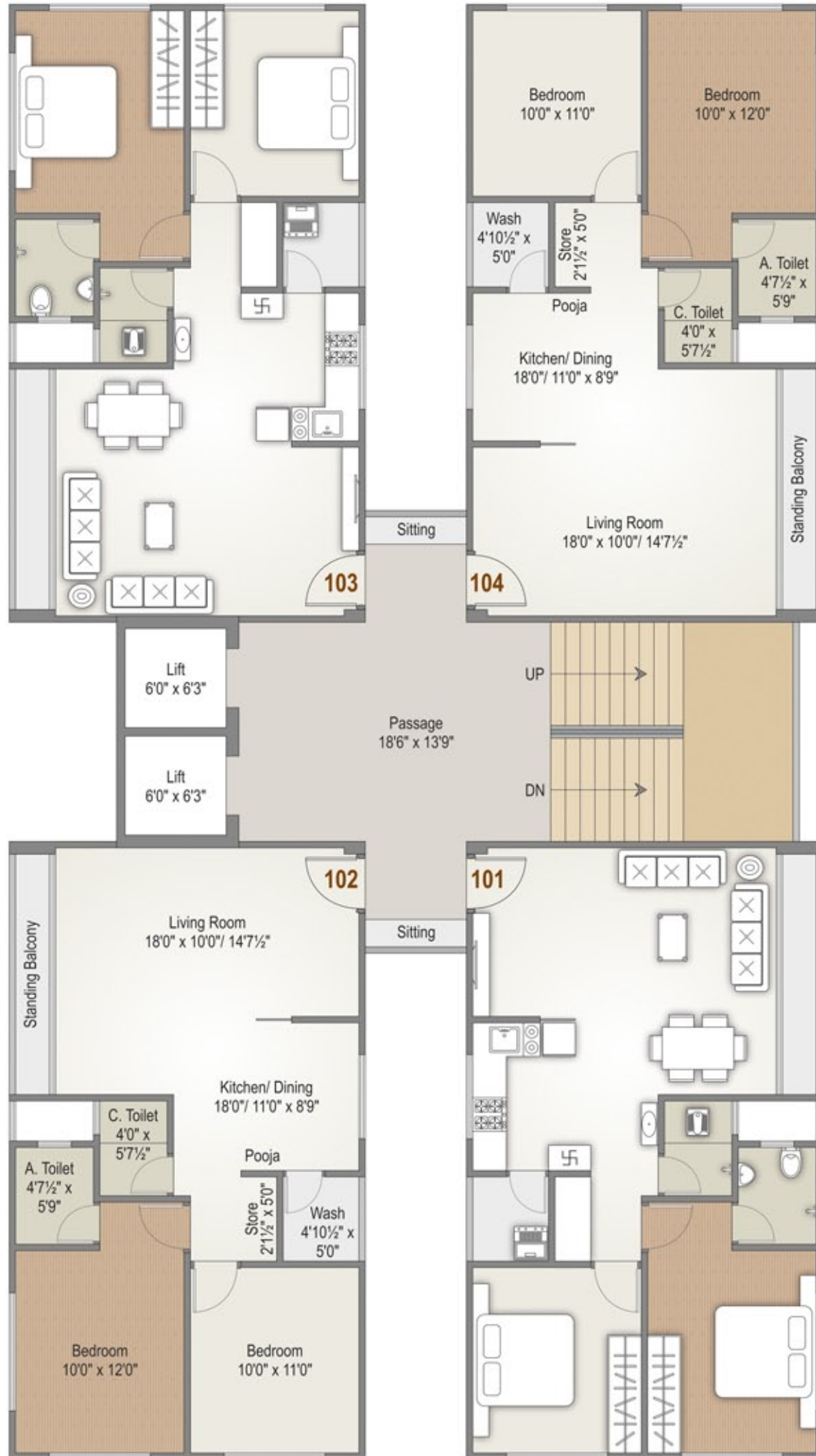
Long
Balcony



French
Windows



1 Allotted
Car Parking





Memorable moments, Cherished here!

With a plethora of amenities within the clubhouse and amidst the environs, Keshav Heights aims to house satisfied residents who cherish every moment spent here with loved ones.



Club House



Party Lawn



Indoor Games



Kids' Play Area



Multipurpose Court



Garden with Cozy Sit-outs



Senior Citizen Sitting



Gazebo



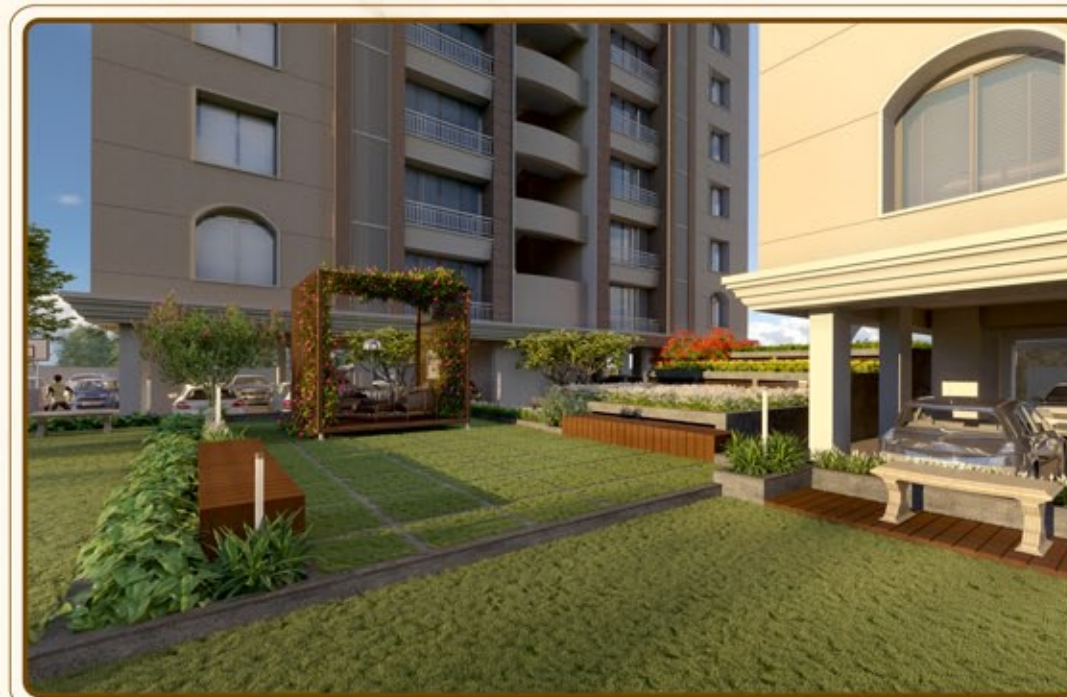
CCTV Monitoring



Pick-up & Drop-off Zone



Guard Room





RCC STRUCTURE

- Structure designed with Earthquake resistant frame



FLOORING

- Vitrified flooring in complete apartment
- Designer tiles in Bathrooms, Balcony and Utility area
- Lobby with Vitrified tiles and Granite
- Lift Wall cladding in Granite/ Texture



ELECTRIFICATION

- Concealed three phase electrical copper wiring
- Modular Switches
- ISI Wires, MCB and ELCB



KITCHEN

- Stainless Steel Sink
- Dado Tiles
- Granite Platform



DOORS

- Main Door - Modular/ Flush Door with both side laminate and Wooden frame
- Other Doors - Modular/ Flush Doors with Wooden frame



WINDOWS

- Aluminum anodized French Windows
- Natural Stone frames on Window sills



TOILET/ BATHROOM

- Concealed Plumbing
- Bathroom Wall cladding with designer series Tiles
- Wooden/ Granite frames for Bathrooms
- Branded Sanitary wares and CP fittings



FIRE PREVENTIVE MEASURES

- Entire design comprises of the Internal Building Code (IBC)
- Manual Panic Alarm provided on each floor for Fire safety



SPECIAL FEATURES

- Provision of drain pipes for split A/C
- Concrete / paver road with Tremix finish
- Ample quantity of water storage
- Underground and Overhead Water Tanks
- Internal Walls finished with Wall Putty
- Weather shield acrylic emulsion Paint for exteriors
- Fully Automatic high speed Lifts
- Security Cabin
- CCTV monitoring of Common areas
- Telephone, DTH, TV points and AC points available in all the rooms
- Power back-up with D.G Sets for Common areas
- 24 hours Water Supply
- Seismic Structural design
- Basement Parking facility
- Vastu compliant design



Joint Venture by:



We at Rameshwaram Group, are one of the leading real estate developers in Surat who are known for quality construction, loyalty and commitment. We attach specific importance to style and design. Our group's projects adorn strategic places in Surat and are replete with strength and splendor. With uncompromising dedication, impeccable construction standard and matchless aesthetic beauty, Rameshwaram Group has provided numerous residential projects to the city and is soon venturing into commercial project space, along with farm houses and hospitality projects. Right from its advent in 2001, Rameshwaram Group has grown drastically over the last 17 years with major projects completed in Adajan, Vesu, Citylight and Amroli.



Somiba Group is a dynamic real estate company managed by young and enterprising professionals. The group, already in the business of Textiles and Power Looms since decades, leverages its knowledge and insight to develop prominent landmarks of the city.

Terms & Conditions:

- All the architectural and interior images in the brochure, are merely simulated interpretations using computer graphics to enhance the customer understanding and are not factual images.
- The colour and general appearance of the flooring and wall tiles, sanitary ware & fittings, walls, ceilings, windows, doors, internal roads, trees, shrubbery etc. shown in the simulated computer graphics images are taken from the object libraries for the purpose of presentation and the prospective buyers of the concerned property are advised to refer to the construction specifications mentioned in the brochure. Additional amenities and/ or utilities not mentioned or shown in the brochure but may be required as per the law, should be deemed to be forming part of the project by the purchaser.
- All Furniture including wardrobes, other sofa furnishings inter-alia curtains, mattresses, bed linen, upholstery etc., lights and other electrical fixtures and appliances like air conditioners, refrigerators, TV's, telephones, laptops etc., any of the equipment, household accessories inter-alia crockery and cutlery, rugs, carpets, decorative pieces and wall hangings, wall papers, utensils etc., apparels and all other consumable and movable items shown in the simulated images do not form part of the sale of any property by the developer.
- All rights reserved with the developers to make any changes in the project and all the members shall abide by such changes.
- GST, SMC/ SUDA charges along-with Torrent electrical charges including cable and Sub-station cost shall be borne by purchaser. Stamp duty, registration charges, or any other charges and taxes as & when levied by government or any of its body shall be borne by purchaser/buyer/legal possession holder.
- This brochure is not to be treated as part of the legal document and is for an easy display of the project.
- This Brochure is for restricted private circulation only and is not to be considered as a legal document with obligations for specific performance. It is meant for the purpose of conceptual presentation only.
- Subject to Surat Jurisdiction.

Site Address

RAMESHWARAM KESHAV HEIGHTS
Bhimrad-Althan Road, Surat - 395 007.

Contact

+91 98254 76666
www.rameshwaramgroup.com

Follow Us On

[f /rameshwaramgroup](#)
[t /rameshwaram2001](#)

Member of



Architect



Structural Designer



RERA Registration No.:

Joint Venture by:

