

RIVER VISTA

A NEW WAVE OF LIVING

4 & 5 BHK LUXURY LIVING

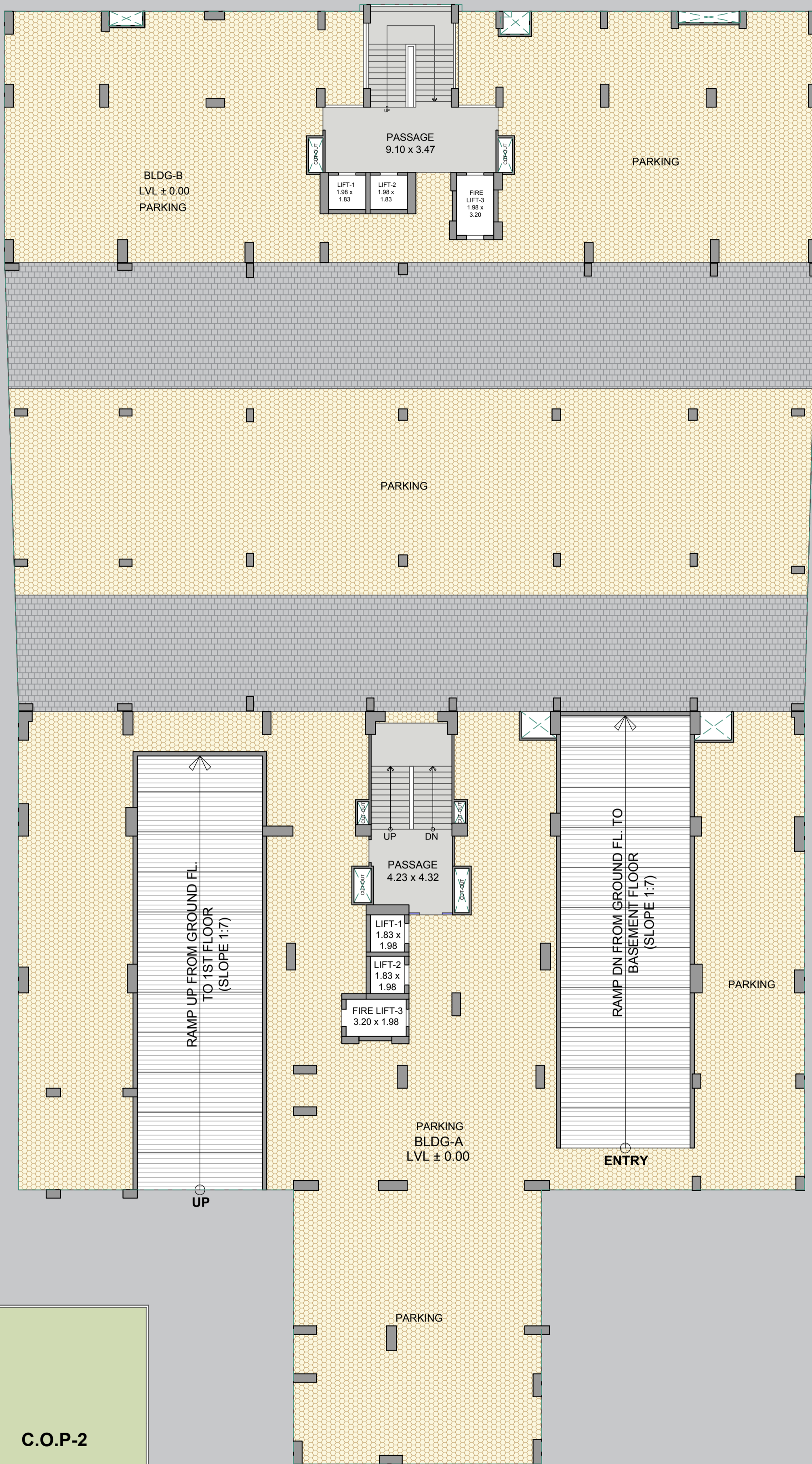
COMING SOON



RIVER VISTA

G + 2
B
UNGALLOWS

GREEN
HILLS



6.00 MT WIDE INTERNAL APPROACH

6.00 MT WIDE INTERNAL APPROACH

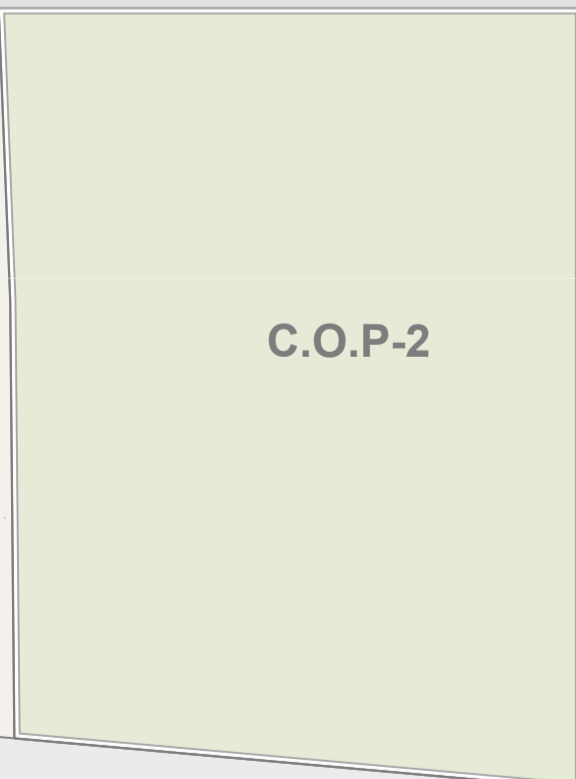
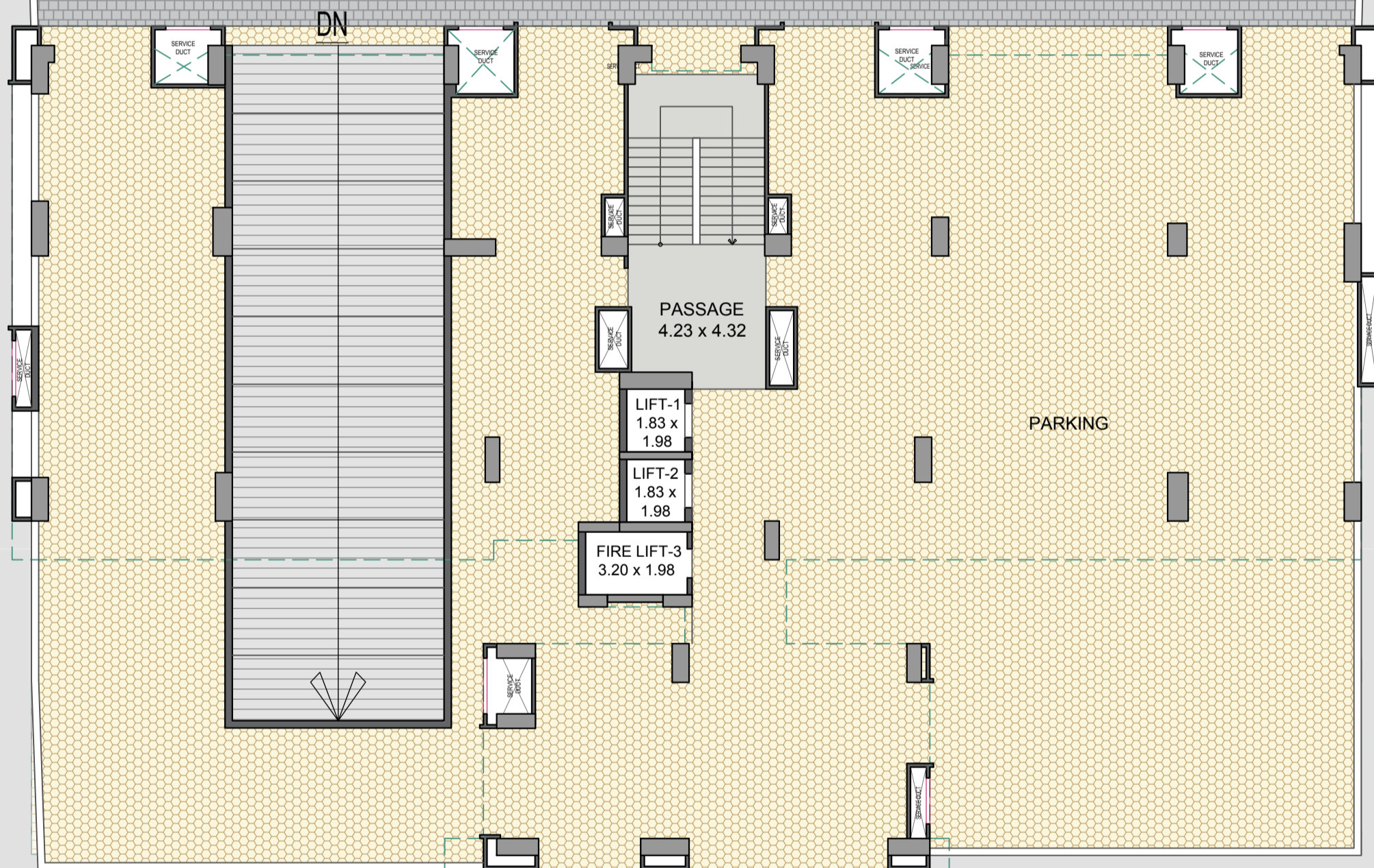
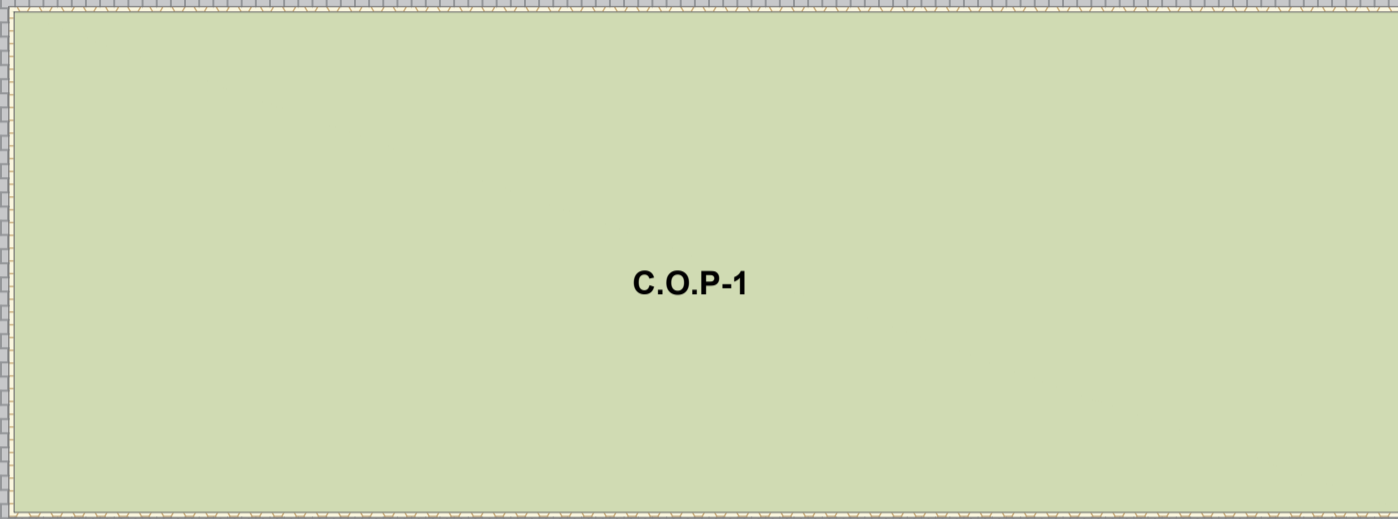
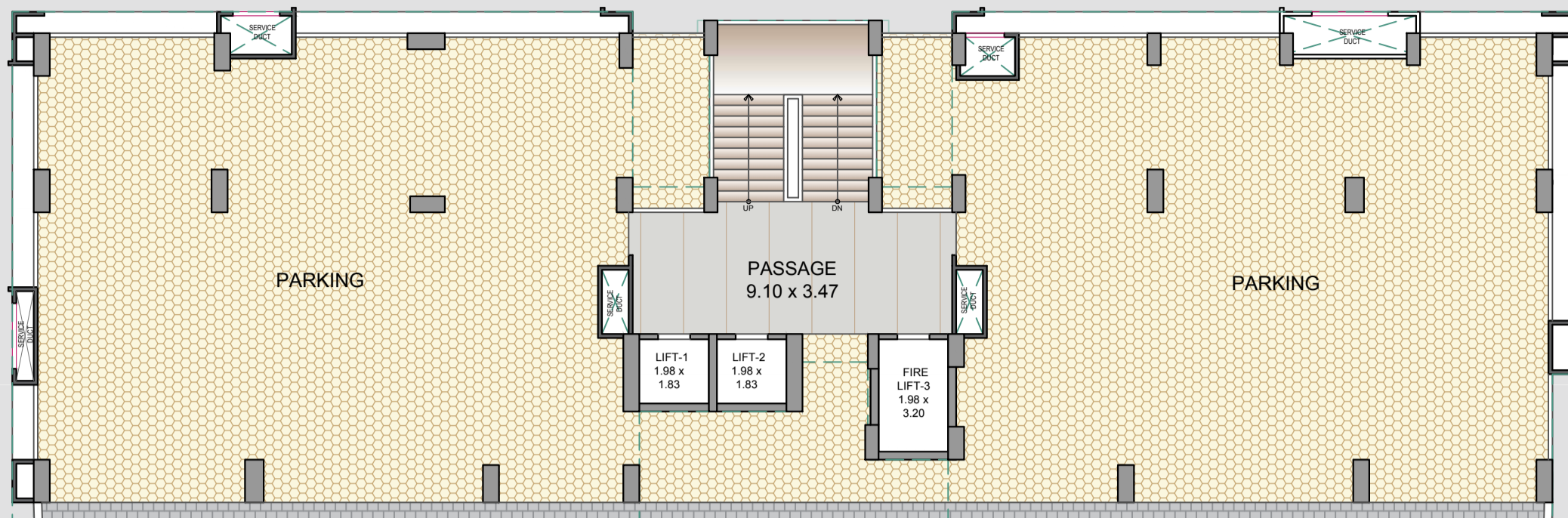
24 M WIDE ROAD

ENTRY/EXIT



G + 2 B
UNGALLOWS

GREEN HILLS



6.00 MT WIDE INTERNAL APPROACH

6.00 MT WIDE INTERNAL APPROACH

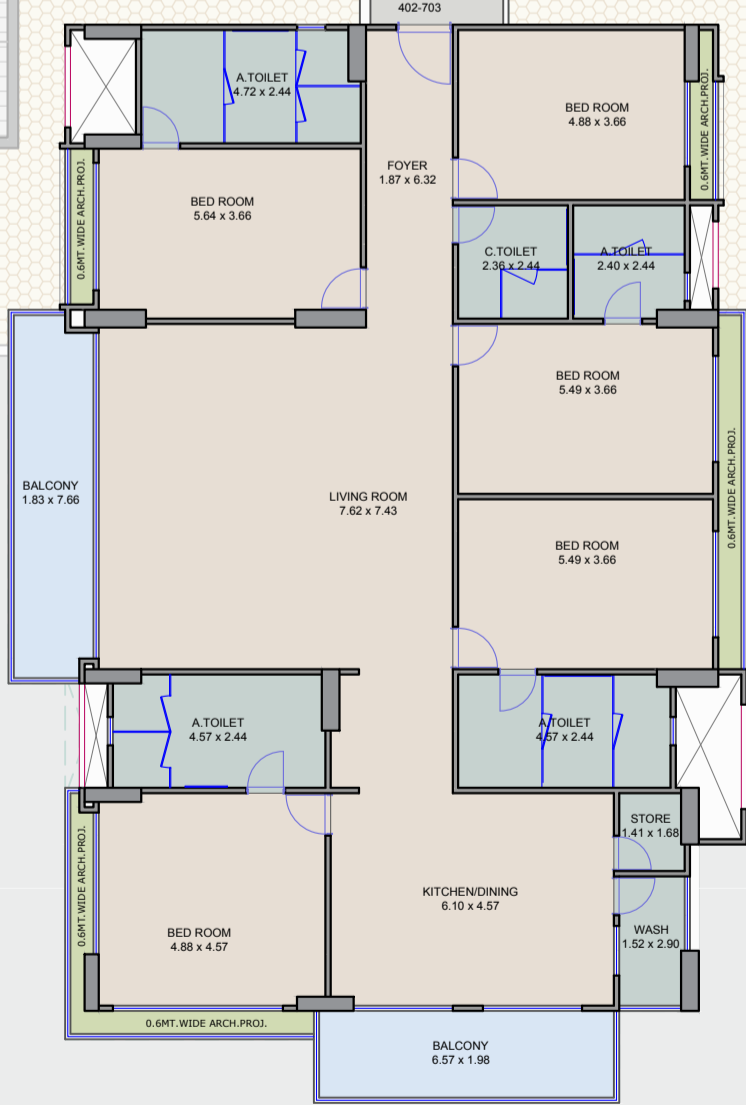
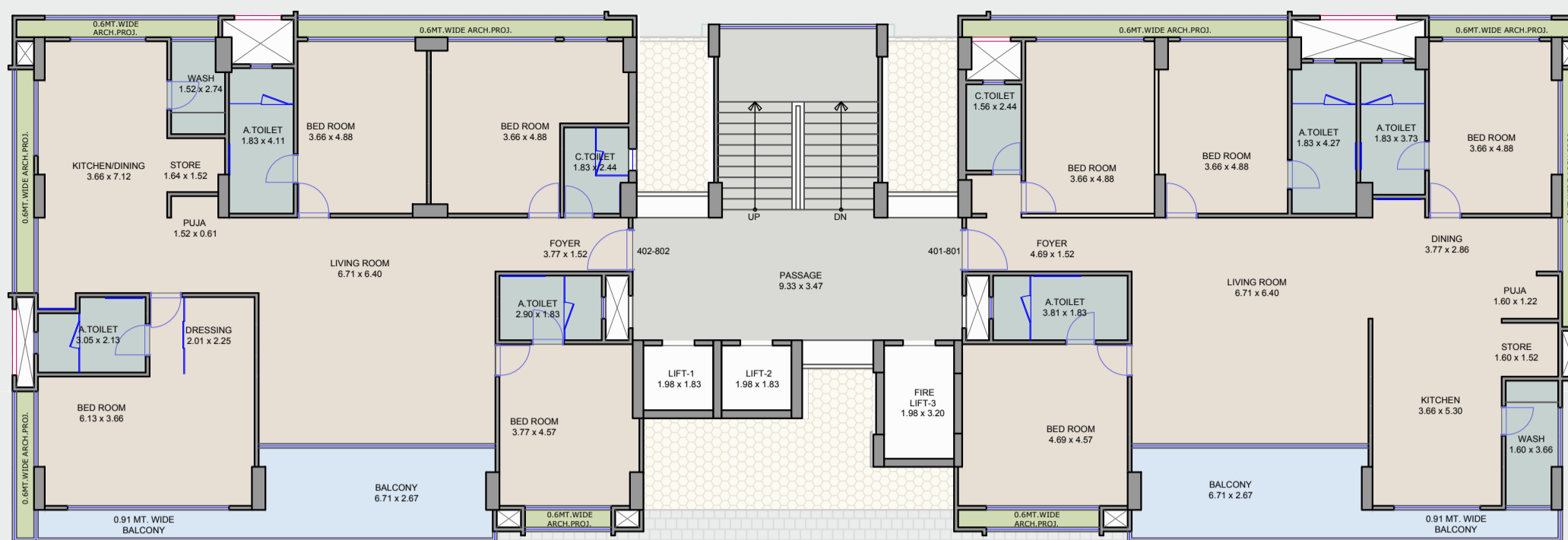
24 M WIDE ROAD

ENTRY/EXIT



G + 2 BUNGALOWS

GREEN HILLS



6.00 MT WIDE INTERNAL APPROACH

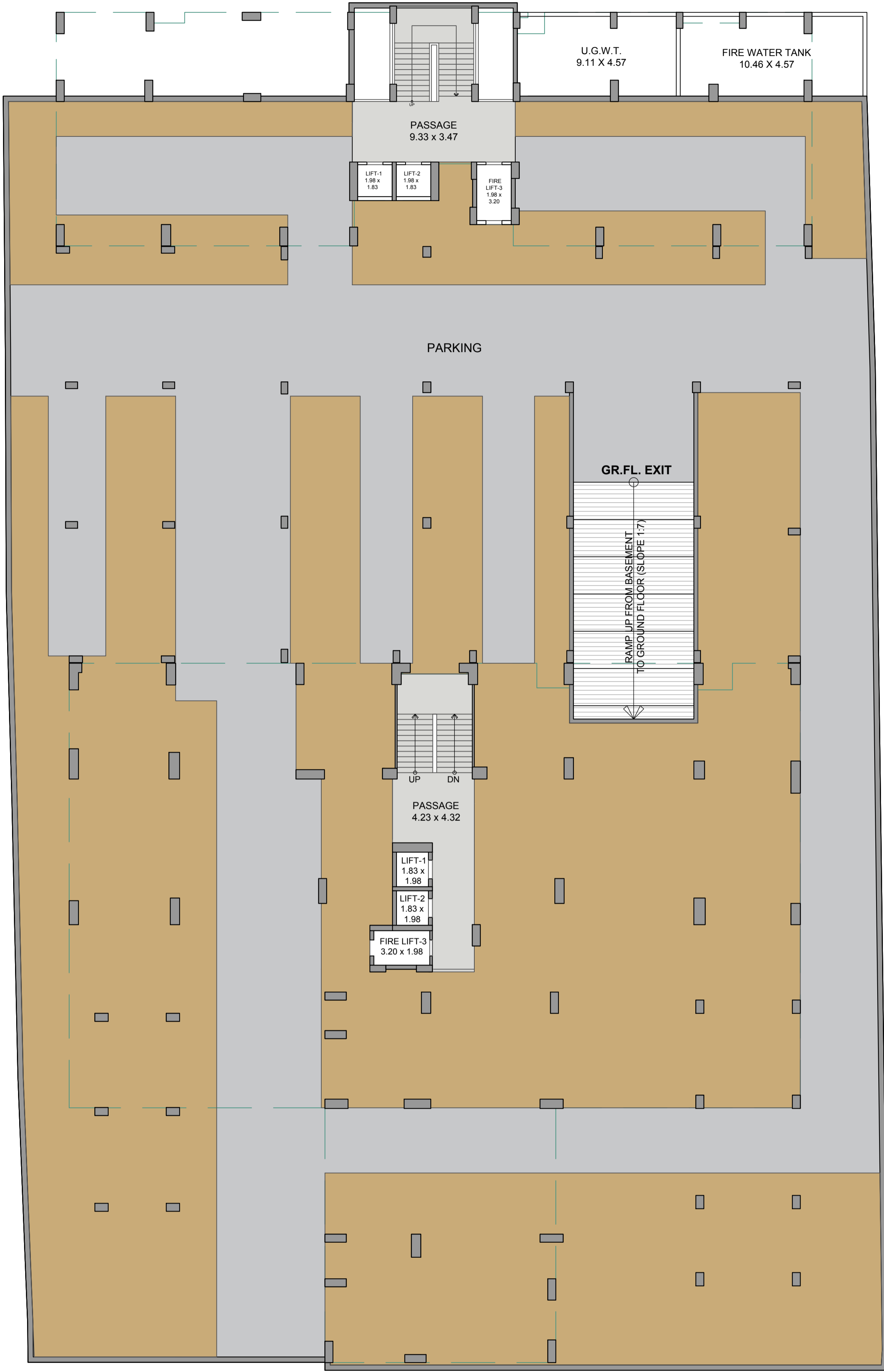
6.00 MT WIDE INTERNAL APPROACH

24 M WIDE ROAD

ENTRY/EXIT



EARTH FILLING



EARTH FILLING



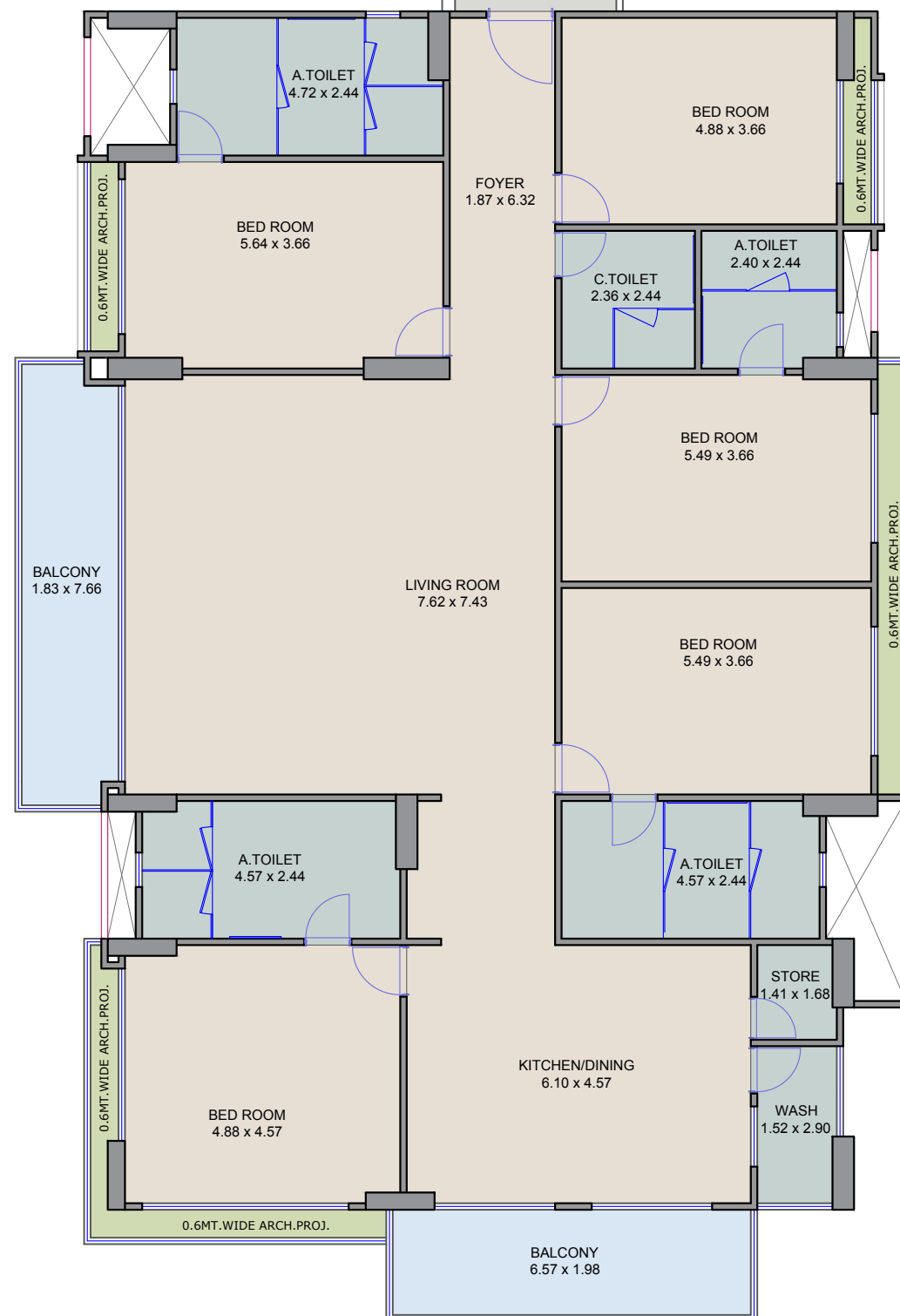
RIVER VISTA
A NEW WAVE OF LIVING

BUILDING A



RCA - 261.93 SQ MT

RCA - 265.01 SQ MT



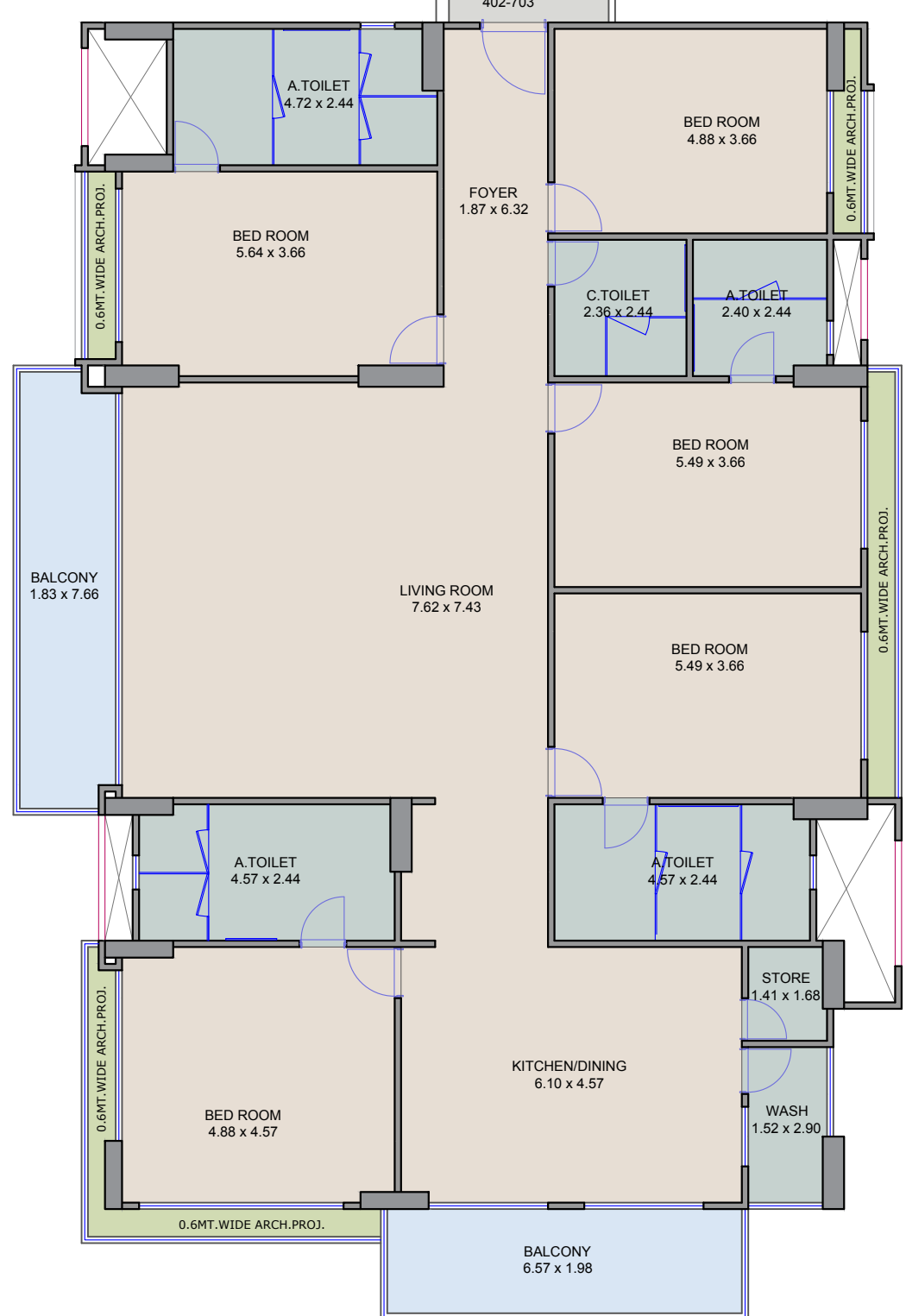
RCA - 291.43 SQ MT





RCA - 274.45 SQ MT

RCA - 276.40 SQ MT



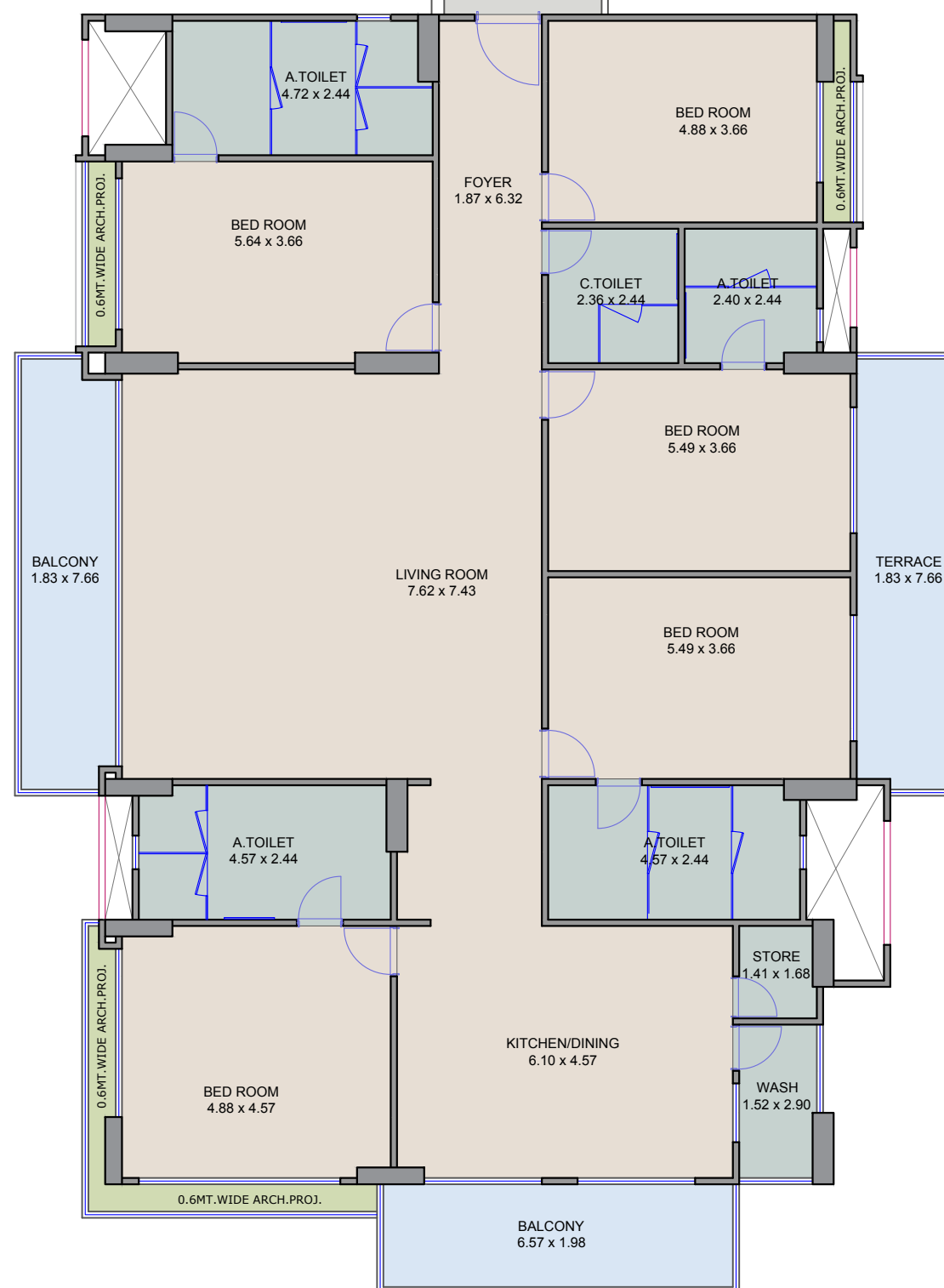
RCA - 291.43 SQ MT





RCA - 274.45 SQ MT

RCA - 276.40 SQ MT



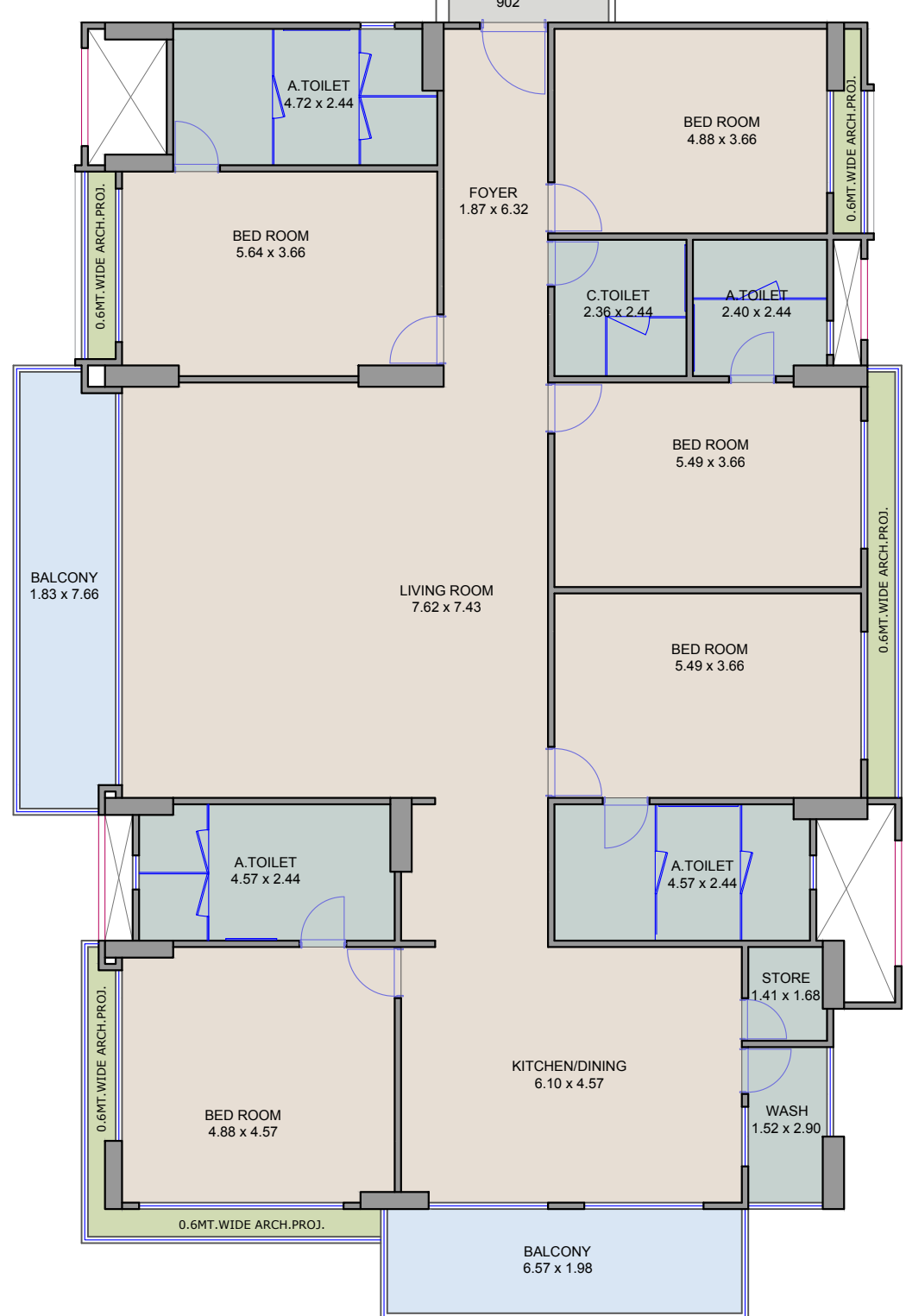
RCA - 305.02 SQ MT





RCA - 281.25 SQ MT

RCA - 283.20 SQ MT



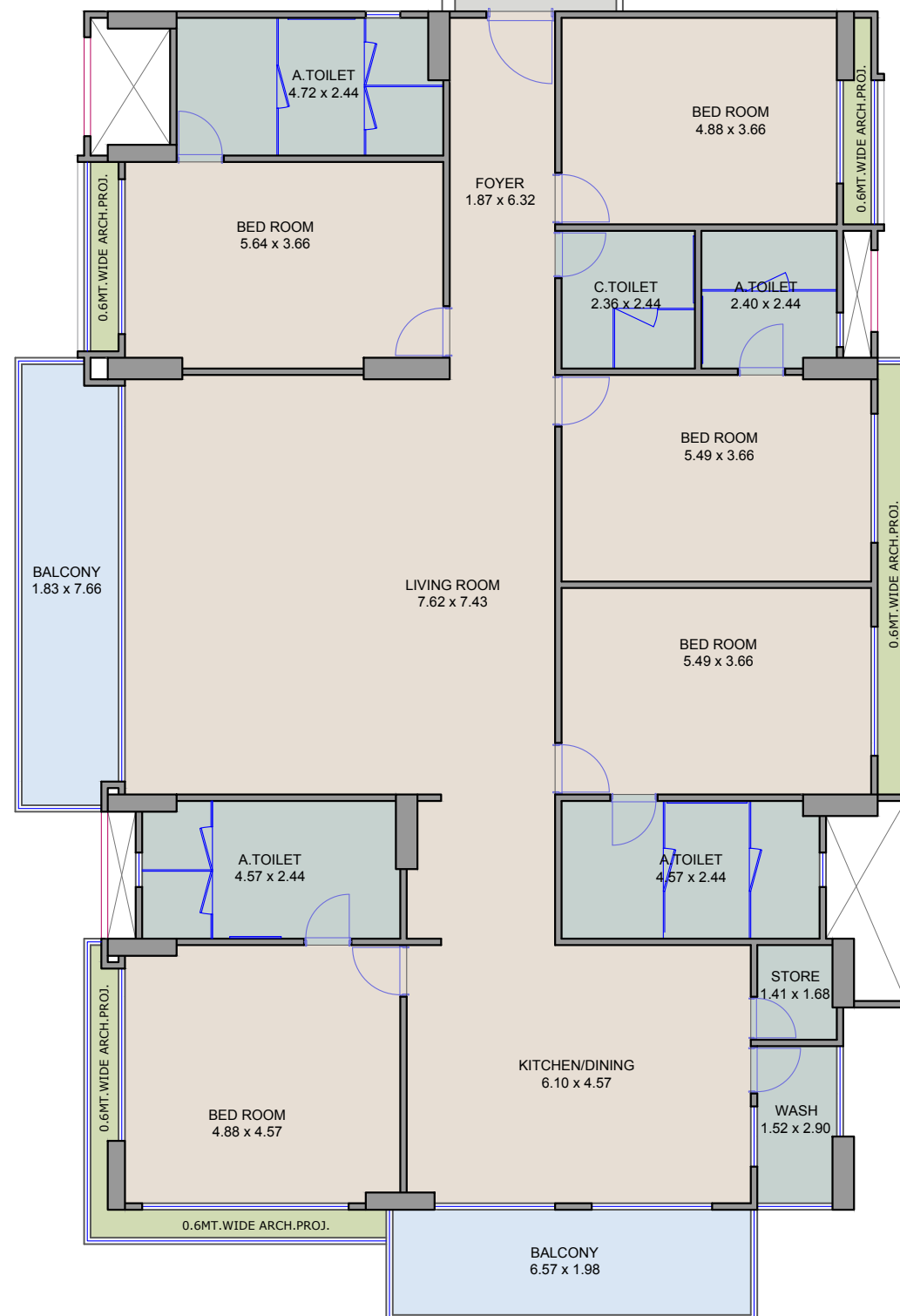
RCA - 291.43 SQ MT





RCA - 287.55 SQ MT

RCA - 296.51 SQ MT



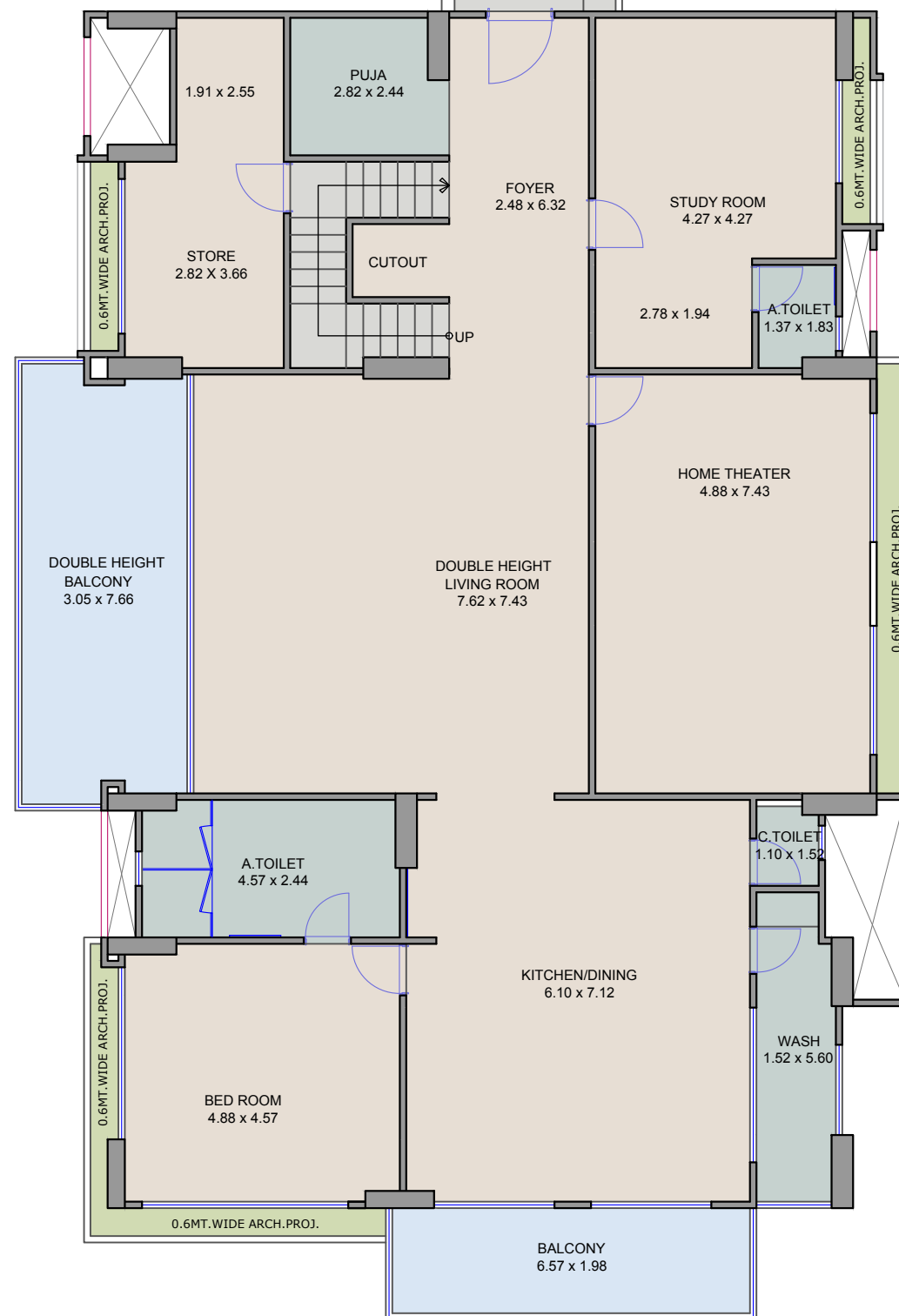
RCA - 291.43 SQ MT





RCA - 287.55 SQ MT

RCA - 296.51 SQ MT



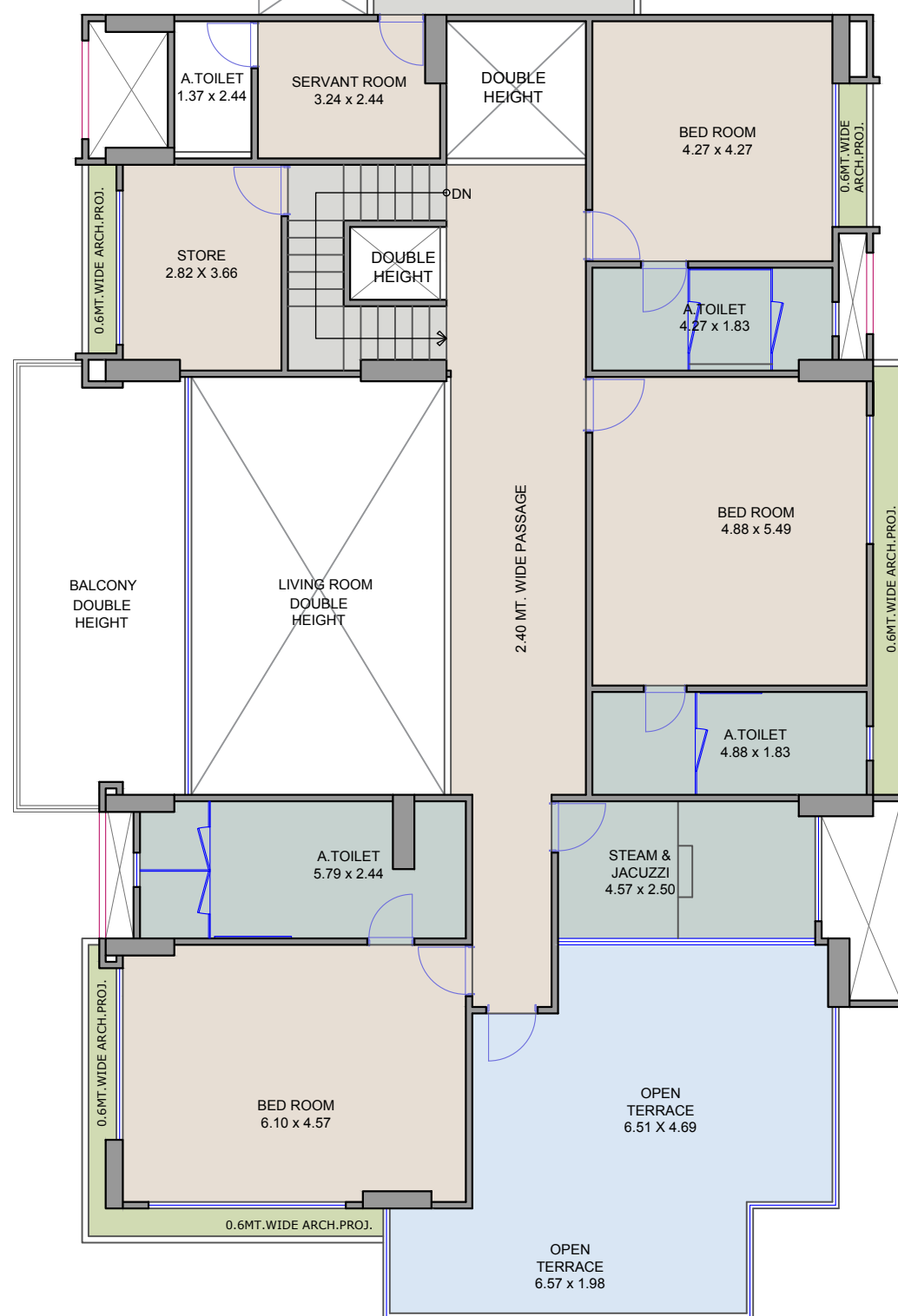
RCA - 291.43 SQ MT





RCA - 152.45 SQ MT
TERRACE CA - 33.45 SQ MT

RCA - 141.41 SQ MT
TERRACE CA - 62.75 SQ MT



RCA - 175.29 SQ MT
TERRACE CA - 41.67 SQ MT



RIVER VISTA

A NEW WAVE OF LIVING

BUILDING B



RCA - 218.77 SQ MT

RCA - 216.36 SQ MT

2ND - 3RD FLOOR PLAN



RCA - 229.09 SQ MT

RCA - 225.87 SQ MT

4TH - 8TH FLOOR PLAN





RCA - 236.98 SQ MT

9TH FLOOR PLAN

RCA - 233.23 SQ MT



RCA - 240.78 SQ MT

10TH FLOOR PLAN

RCA - 235.73 SQ MT





RCA - 232.84 SQ MT

RCA - 228.05 SQ MT

11TH FLOOR PLAN



RCA - 122.87 SQ MT
TERRACE CA - 36.93 SQ MT

RCA - 129.75 SQ MT
TERRACE CA - 23.64 SQ MT

12TH FLOOR PLAN



INTERNAL SPECIFICATIONS

FLOOR FINISH

- 8'X4' TILES IN LIVING, DINING AND KITCHEN AREA
- 32" x64" TILES IN ALL OTHER BED ROOMS

DECK & FLOWER BED

- DECK WITH TILE FLOORING
- FLOWER BED WITH WATER PROOFING AND TILES
- ALUMINIUM/SS GLASS RAILING

KITCHEN

- GRANITE KITCHEN PLATFORM WITH SINK OF FRANK OR EQUIVALENT
- HIGH QUALITY VITRIFIED TILES UP TO LINTEL LEVEL

WASH & UTILITY

- KOTA IN FLOORING AND VITRIFIED TILES ON DADO WITH ADEQUATE ELECTRICAL AND PLUMBING POINTS

STORE

- ADEQUATE KOTA STONE/MARBLE SHELVES WITH GLAZED TILES DADO

WALL SURFACE

- ALL INTERNAL PLASTERED WALLS

BATHROOMS

- DECORATIVE HIGH QUALITY VITRIFIED TILES UP TO LINTEL LEVEL
- JAGUAR / KOHLER OR EQUIVALENT SANITARY WARES
- JAGUAR / KOHLER / GROHE OR EQUIVALENT BATHROOM FITTINGS

DOORS & WINDOWS

- MAIN DOOR WITH TEAK WOOD FRAME PROVIDED WITH LOCK & FITTINGS
- ALL WINDOW OPENINGS PROVIDED WITH GRANITE FRAME AND GOOD QUALITY ALUMINIUM ANODIZED SLIDING WINDOW

ELECTRICAL

- SUFFICIENT POINTS IN CONCEALED COPPER WIRING OF FINOLEX /POLYCAB /ANCHOR OR EQUIVALENT
- MODULAR SWITCHES OF ANCHOR/LEGRAND/EQUIVALENT 3 PHASE METER IN EACH FLAT 2 AMP POWER BACKUP IN EACH FLAT

EXTERNAL SPECIFICATIONS

FACADE TREATMENT

- DOUBLE COAT SAND FACED PLASTER ON EXTERNAL WALL
- EXTERIOR QUALITY PAINT ON WALL

ENTRANCE FOYER

- WELL-DESIGNED ENTRANCE FOYER

PARKING

- ALLOTTED CAR PARKING

TERRACE

- WATERPROOFING ON TERRACE

FIRE FIGHTING

- FIRE FIGHTING SYSTEM PROVIDED AS PER THE FIRE NORMS

WATER SUPPLY

- ADEQUATE CAPACITY OF UNDERGROUND AND OVERHEAD WATER TANKS FOR SMC & BORE WATER AND SEPARATE TANKS FOR FIRE SAFETY.

ELEVATORS

- TWO FULLY AUTOMATIC PASSENGER ELEVATORS OF KONE /EQUIVALENT MAKE PROVIDED TO EACH BUILDING
- ONE SERVICE ELEVATOR OF NEW AGE/EQUIVALENT MAKE PROVIDED TO EACH BUILDING.

ELECTRIC POWER BACKUP

- SILENT GENERATOR OF ADEQUATE CAPACITY FOR ELEVATORS WATER PUMPS AND COMMON FACILITIES
- DESIGNER LIGHT FITTING FOR COMMON PASSAGE AND CAMPUS

SECURITY

- CCTV CAMERA COVERAGE IN RECEPTION, CAMPUS, ELEVATORS AND BASEMENT AREA

TECHNICAL SPECIFICATIONS

- EARTHQUAKE RESISTANCE STRUCTURE DESIGN AS PER IS CODE



Project Name
RIVER VISTA

RIVER VISTA,
 TP. 10 (ADAJAN), F.P 84,
 NR. BAPS SWAMINARAYAN TEMPLE,
 ADAJAN, SURAT - 395009 GUJARAT

E: RIVERVISTA47@GMAIL.COM
 P: +91 81401 10022

A Project by

**GREEN
 REALTY**