

Royal   
**REVANTA**  
**5 BHK** ULTRA LUXURIOUS LIVINGS

Developer

**THE ROYAL  
BUILDERS**

Design By :



Site Address :  
ROYAL REVANTA,  
Nr. Syam Kutir 2, Landmark : 108 GVK Emergency,  
Hansupra, Ahmedaba  
Contact : 99094 85858

Site Address :  
ROYAL REVANTA,  
Nr. Syam Kutir 2, Landmark : 108 GVK Emergency,  
Hansupra, Ahmedaba

Contact : 99094 85858

Developer

**THE ROYAL  
BUILDERS**

Design By :

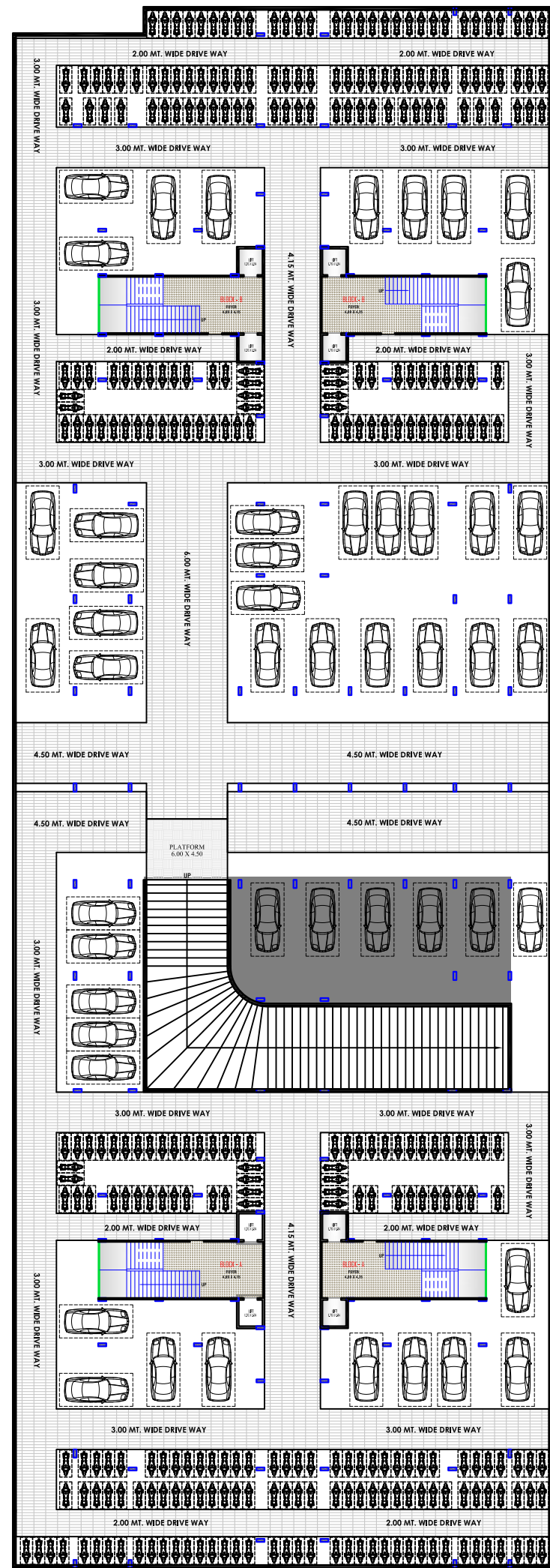






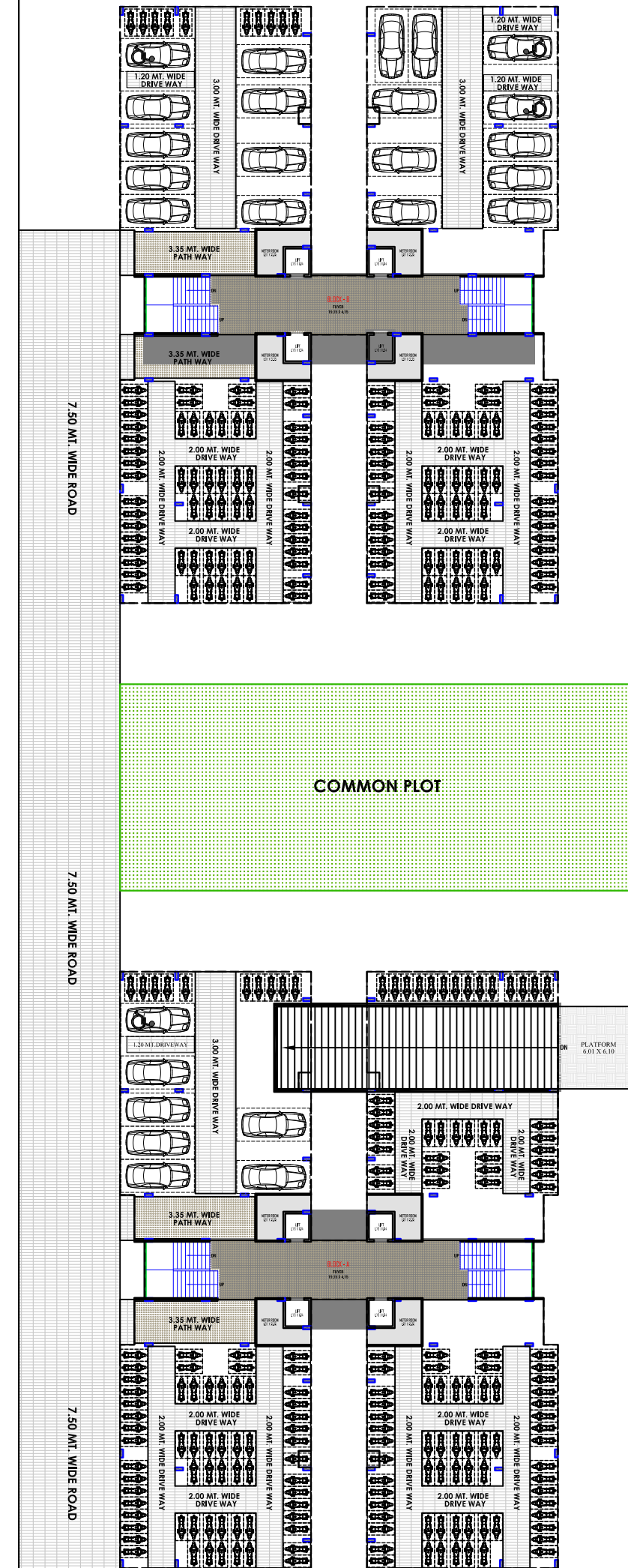


# BASEMENT Floor Plan



18.00 MT. WIDE T.P. ROAD

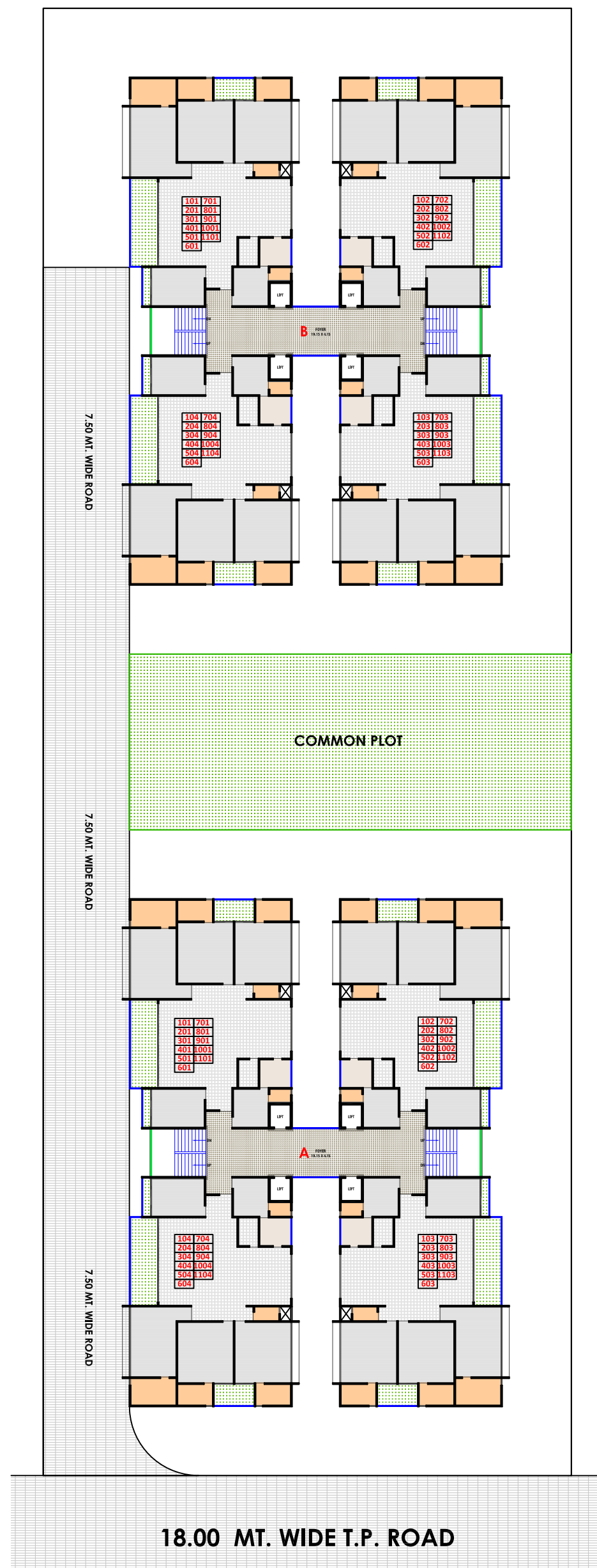
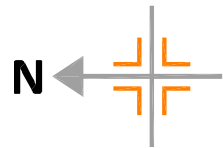
# GROUND Floor Plan



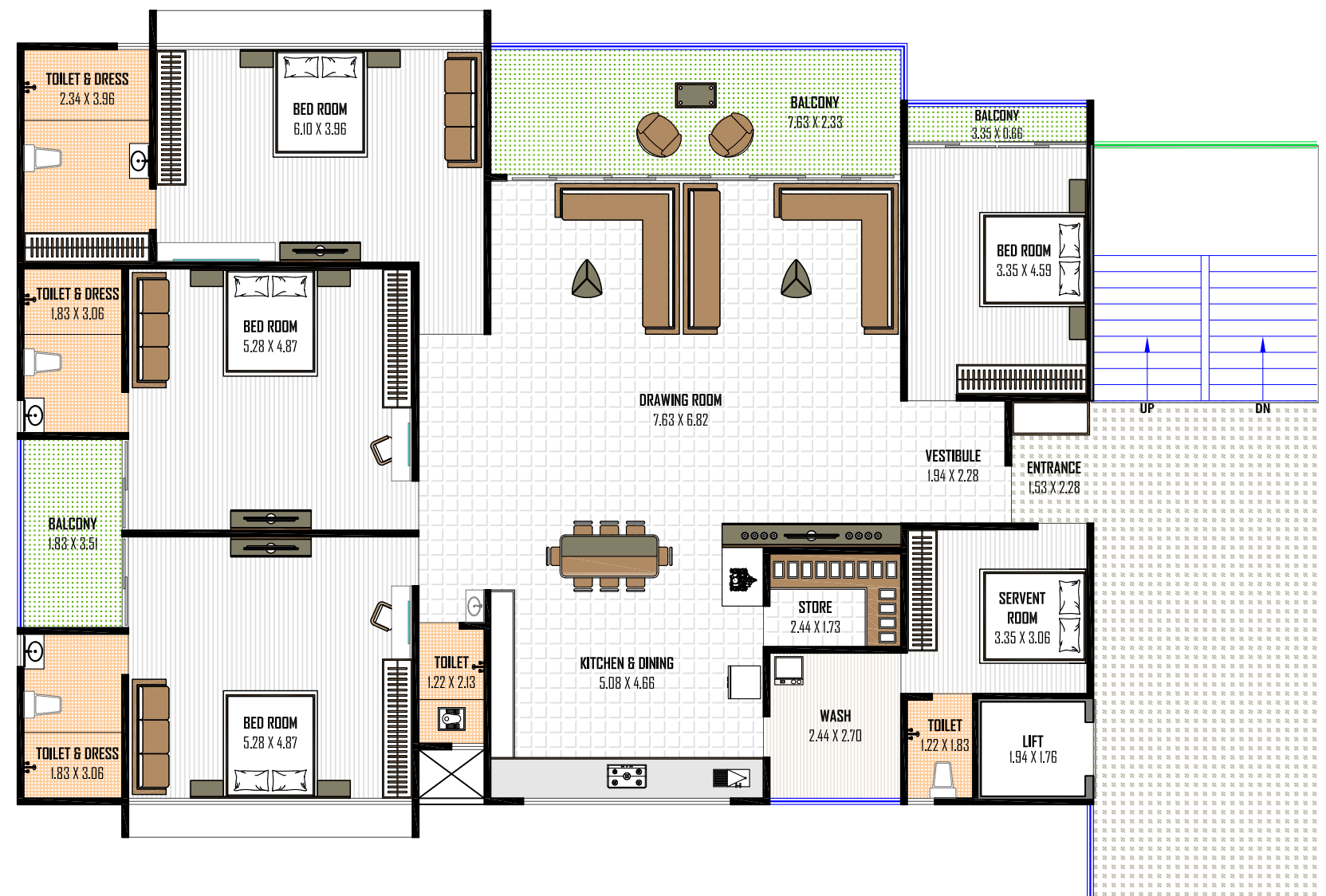
18.00 MT. WIDE T.P. ROAD



# TYPICAL Floor Plan



# UNIT PLAN (BLOCK :- A,B)







## SPECIFICATION

### **Structure**

Structure designed with earthquake resistant frame.

### **Flooring**

Vitrified tiles in entire flat.

### **Finishes**

Internal cement finish plaster including putty finish on walls, external double coat sand face plaster with cement based water repellent paint.

### **Kitchen**

Kitchen platform granite top with mirror polish.  
Ceramic tiles dado on kitchen counter up to lintel bottom with stainless steel sink.

### **Toilet**

Designer tiles, dado up to lintel level with standard fittings.

### **Doors**

Decorative laminated main door, All internal doors are flush door.

### **Windows**

Anodized coated Aluminum sliding windows with glass finishing.

### **Electrification**

Branded ISI modular switches concealed copper ISI ELCB wiring with adequate number of points.

### **Plumbing**

ISI CPVC and UPVC for water supply, PVC & SWR pipes for solid waste and drainage systems. Branded CP Fittings.

### **Terrace**

Brick-bat concrete with china mosaic for heat reflection and thermal insulation.





# Royal REVANTA

**5 BHK** ULTRA LUXURIOUS LIVINGS

Site Address :  
 ROYAL REVANTA,  
 Nr. Syam Kutir 2, Landmark : 108 GVK Emergency,  
 Hansupra, Ahmedaba

Contact : 99094 85858

Scan For Location

