



**ROYAL SKY**

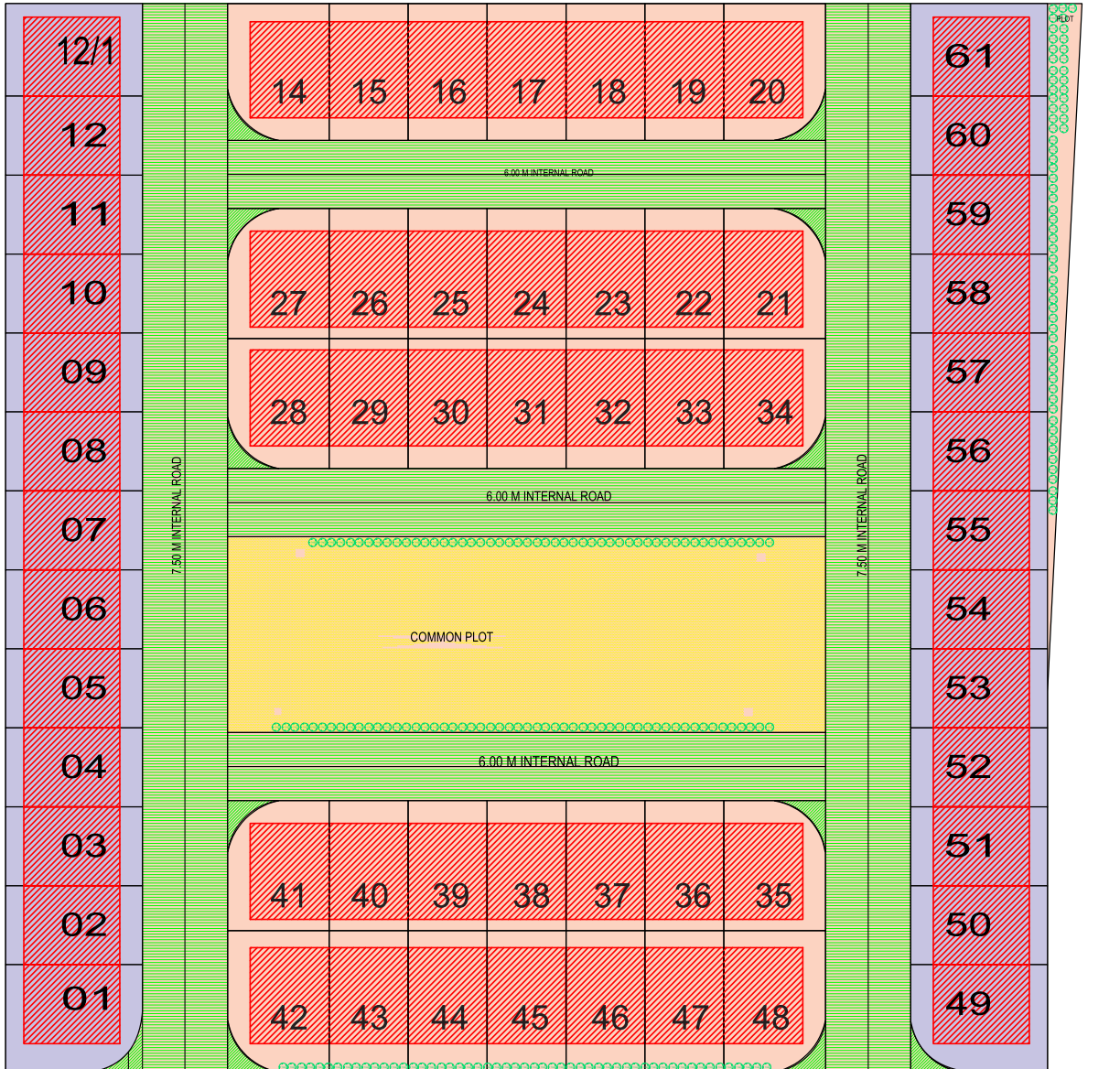
---

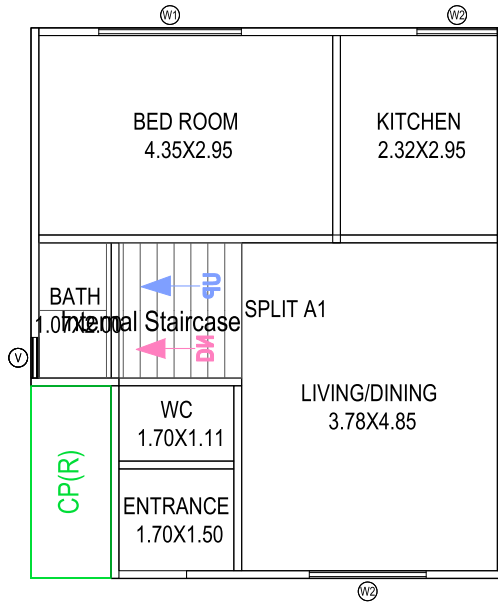
Royalty Re-defined

---

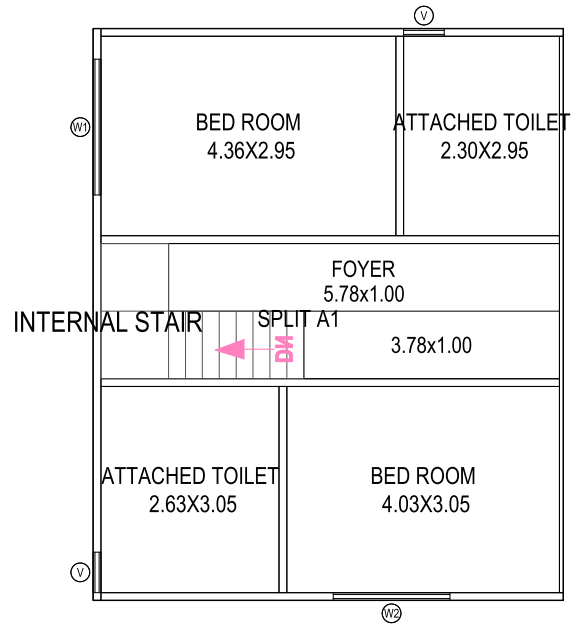








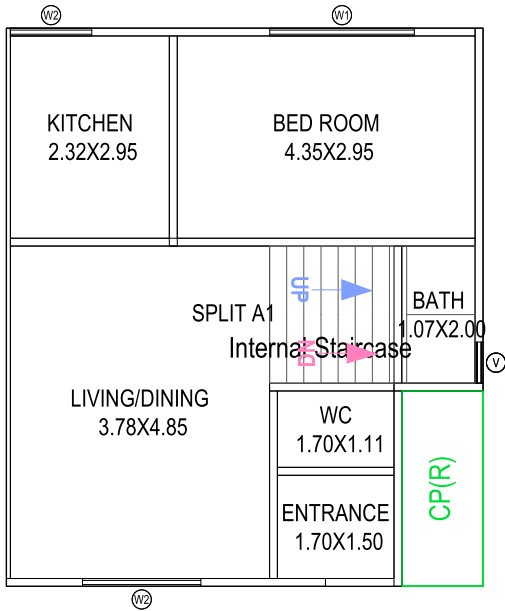
GROUND FLOOR PLAN



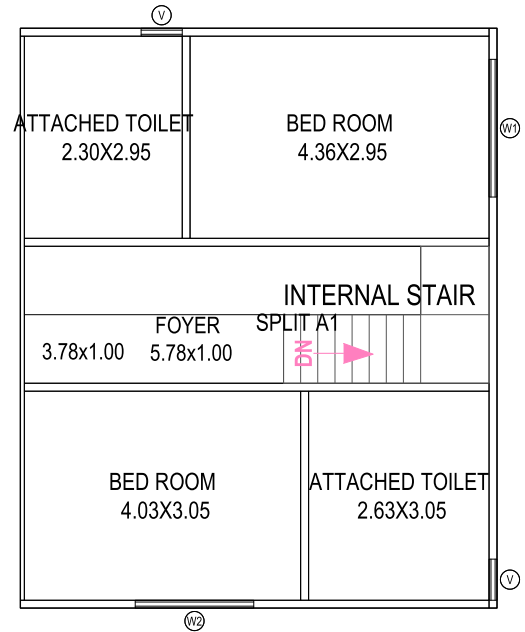
FIRST FLOOR PLAN

## A - TYPE

(01,03,05,07,09,11,14,16,18,21,22,24,26,28,30,  
32,35,36,38,40,42,44,46,50,52,54,56,58,60,61)



GROUND FLOOR PLAN



FIRST FLOOR PLAN

## B - TYPE

**(02,04,06,08,10,12,12/A,15,17,19,20,23,25,27,29,  
31,33,34,37,39,41,43,45,47,48,49,51,53,55,57,59)**

---

# SPECIFICATIONS

---



## FLOORING

- Entrance foyer - Natural stone
  - Vestibule - Vitrified tiles
  - Living / Dining / Bedrooms - Vitrified tiles
  - Verandah / Balcony - Natural stone
  - Staircase - Natural stone
  - Terrace - China mosaic
- 



## KITCHEN

- Designer tiles dado up to 7 feet height
  - Polished granite kitchen platform
  - S.S. sink
  - Kota stone shelves in store room
  - Provision for LPG gas point
- 



## TOILETS

- Designer tiles dado up to 7 feet height
  - Counter top basin / wall hung basin
  - Branded plumbing fixtures
  - Branded sanitary wear fittings
  - Provision for hot water supply
- 



## WINDOWS

- Powder coated aluminium sliding windows
- 



## DOORS

- Entrance door - Wooden frame with veneer finish
  - Internal doors - Wooden frame with flush door shutter
- 



## WALL FINISHES

- Internal - Putty finish
  - External - Acrylic paint
- 



## ELECTRIFICATION

- 3-phase concealed wiring
  - Modular switches of branded quality
  - ISI approved concealed copper wiring
  - MCB distribution panel
  - Provision for inverter
  - AC points in master bedroom and living / dining room
- 



## FACILITIES

- 24 hrs water supply
  - Paved driveway
  - Individual boundary wall for each unit without entrance gate
-

**royal**

INFRASTRUCTURE

LIVE AS THE ROYALS

**ROYAL INFRASTRUCTURE**

**Site Office:** Royal sky, Royal City,  
Kalikund, Dholka.

**Head Office:** 606, Pinnacle Business Park,  
Pralhad Nagar, Ahmedabad

Scan QR Code  
to Get Site Location



**AR. BHAUMIK DONGA**  
ARCHITECT

**MAGANBHAI M. RATHOD**  
ENGINEER

Call : +91-90991 01234 | +91-90992 01234

e-mail : [info@royalinfrasturcture.in](mailto:info@royalinfrasturcture.in)

[www.royalinfrasturcture.co.in](http://www.royalinfrasturcture.co.in)