

A Project Re-Developed by



HIRADHAN

RANGBINDU FLATS

B/h. Bombay Garrage, Nr. Dolphin Club,
B/h. Akshardham Tower, Shahibaug, Ahmedabad.

E-mail : hiradhandevelopers@gmail.com

Contact : 90990 75122 • 98254 60612

Architect
SR Design & Construction
Ronak Patel

Structural Engg.
Shreeji Structurals
Ketav Joshi

Legal Adviser
Advocate
Dipak Dalwadi

RERA REG. NO. : PR/GJ/AHMEDABAD/AHMEDABAD CITY/AUDA/RAA00000/000000
www.gujrera.gujarat.gov.in

Where feelings are Life...

RANGBINDU

● ● ● FLATS ● ● ●

**3 & 4 BHK
LUXURIOUS APARTMENTS**



A Project Re-Developed by



HIRADHAN

RANGBINDU

●●● FLATS ●●●

A Project Re-Developed by



HIRADHAN

THE JOY OF TRUST

- 100 % Transparency in dealing
- Branded Installation
- In-Time project delivery
- Quality construction
- Best carpet efficiency



Each Floor only 2 Flats



Allotted car Parking



Each Block Two Automatic Lift



CCTV Camera



Common Bore-well



Three Phase Wiring



Fully Ventilated Flat



Six Storey Building

A Project Re-Developed by



HIRADHAN

24
MEMBERS
ONLY



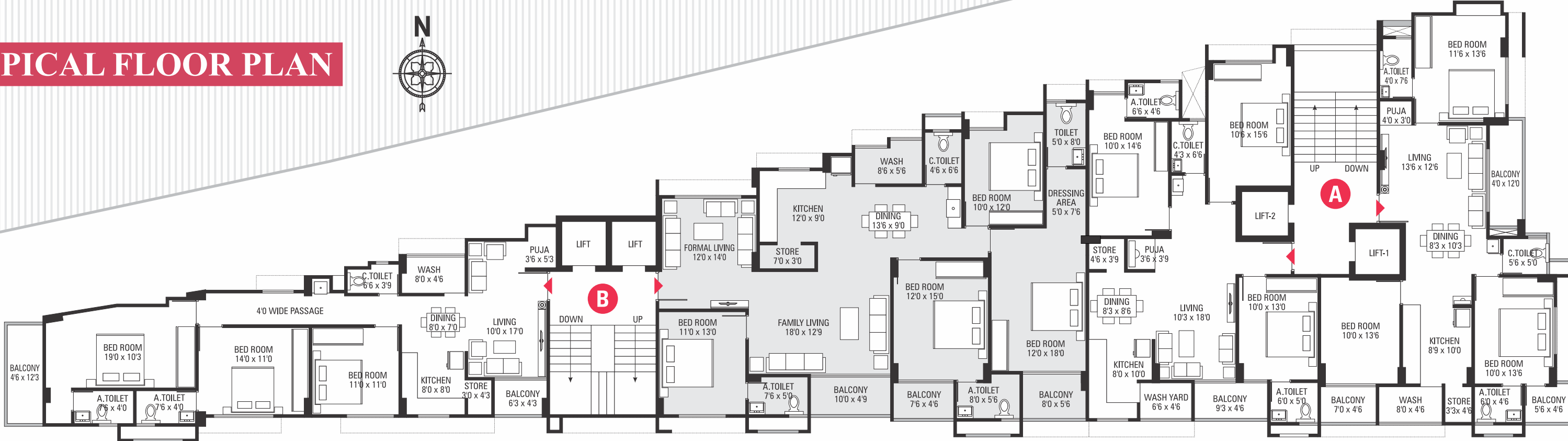
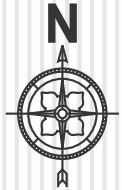


**24
MEMBERS
ONLY**

RANGBINDU

●●● FLATS ●●●

TYPICAL FLOOR PLAN



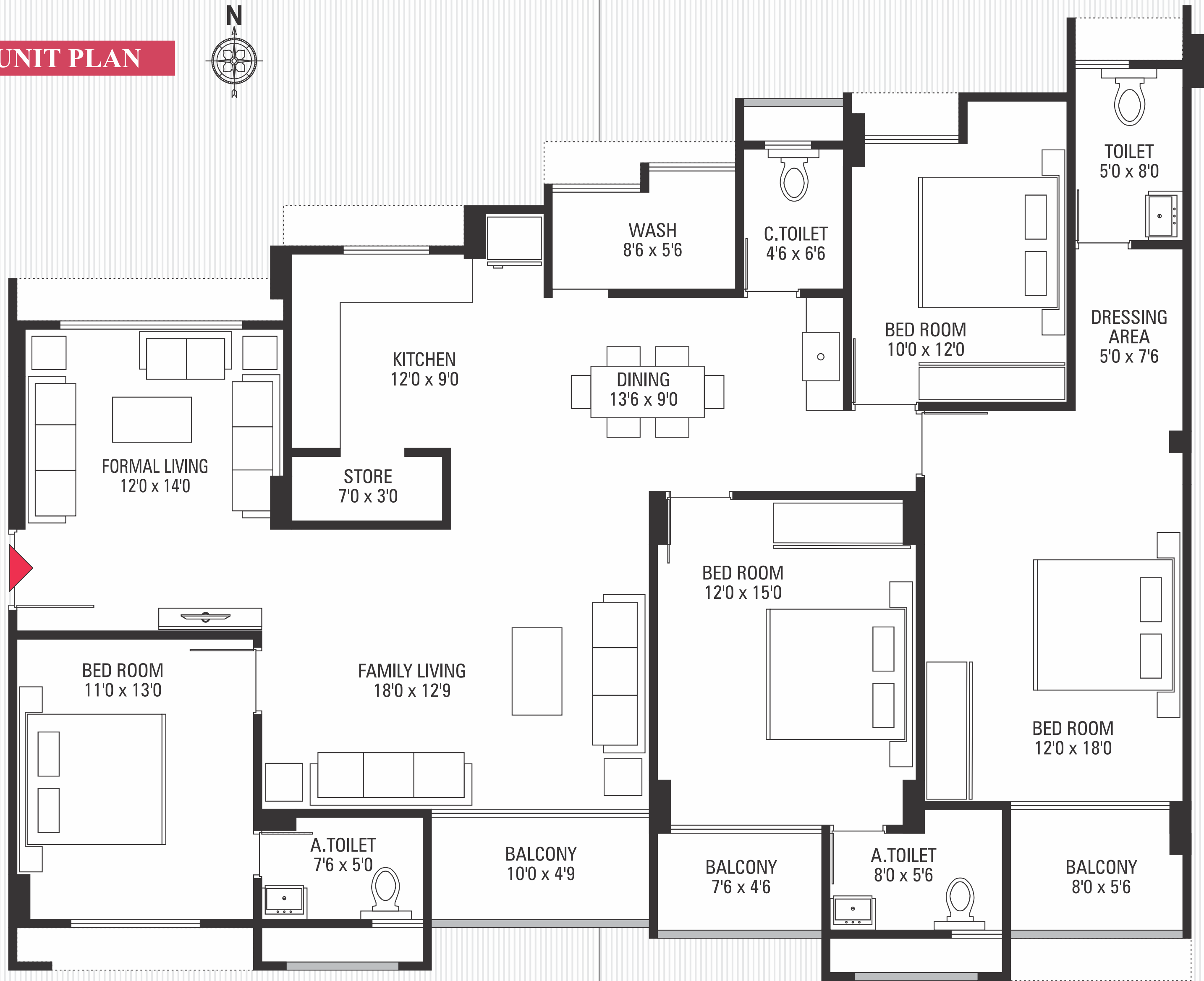
9.00 MT ROAD

12.00 MT ROAD










UNIT PLAN



101
201
301
401
501
601



SPECIFICATIONS :

RCC		R.C.C. frame structure with ISI steel bars.
FLOORING		Designers Series Tiles.
KITCHEN		Mirror polished granite platform with SS sink Decorative tile up to lintel level.
BATHROOMS		Branded sanitary wares & CP fittings.
DOORS		All Door : Modular or flush doors with door screen
WINDOWS		Fully glazed anodized aluminum windows with Granite sills.
ELECTRIFICATION		ISI 3 Phase concealed copper wiring with modular switches.
PAINT		Internal walls finished with wall putty. Weather shield acrylic emulsion exteriors paint.
TERRACE		China mosaic with required water proofing on terrace for cool temperature.

BRAND WE USE :

STEEL		   (or equivalent)
CEMENT		  (or equivalent)
BATHROOM FIXTURES		   (or equivalent)
ELECTRIC WIRE		    (or equivalent)
MODULAR SWITCHES		   (or equivalent)
SANITARY WARE		   (or equivalent)
ELEVATOR		  (or equivalent)
PLUMBING		   (or equivalent)
PAINT		  (or equivalent)
LOCKS		    (or equivalent)



- Airport5 km
- Kalupur Railway Station.....4 km
- Sabarmati Railway Station3 km
- Ranip ST Bus Stand3 km
- BAPS Temple1 km
- Rajasthan Hospital2 km
- Rani Sati Temple1 km
- Maheshwari Seva Samiti1 km
- River Front1 km

NOTE :

- Torrent, AMC, Maintenance Charges & all other Govt. taxes to be borne by the members.
- This Brochure is just a representation of the project.
- Irregular Payment will automatically ensure cancellation of the booking.
- The developer reserves all rights to change or to make any modifications.
- Subject to Ahmedabad Jurisdiction
- Payments in favour of "HIRADHAN DEVELOPERS"