



Saffron
binori
RESIDENCY

2 BHK DELUXE APARTMENT





Saffron
binori
RESIDENCY

FUSION FOR A HAPPY LIFE...

SAFFRON BINORI is taking a right towards your dreams and desires, towa





SPECIFICATION

STRUCTURE :
Earthquake resistant R.C.C. frame structure as per new AMC laws.

FLOORING :
Mirror polished vitrified flooring in 600 x 600 all rooms.

KITCHEN :
Granite platform with S.S. sink, Glazed tiles dado up to lintel level, Arrangement of water supply and Ele. Point for water purifier.

DOORS & WINDOWS :
Decorative laminated main door & all other doors are flush doors with enamel paint, fully glazed aluminum window with granite frame.

WALL FINISH :
Internal smooth plaster with putty finish and External double coat plaster with premium quality paint.

ELECTRIFICATION :
Concealed ISI copper wiring and modular switches of Anchor Roma or equivalent as per adequate requirements.

TOILET :
Designer tiles dado up to lintel level, with standard CP fittings and sanitary ware. (Jaquar, Hindware)

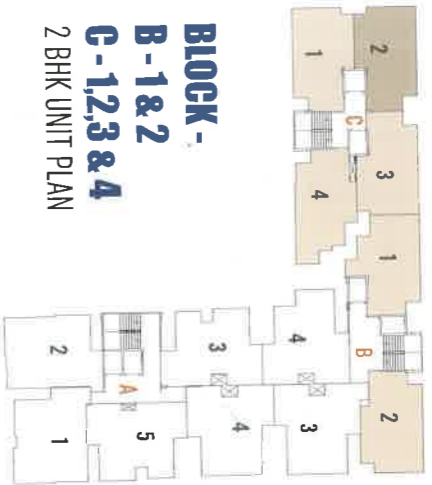
PLUMBING :
Concealed plumbing CPVC / UPVC hot and cold water supply pipes with suspended plumbing drainage lines

TERRACE :
Terrace to be finished with suitable water proofing and china mosaic flooring for heat reflection.

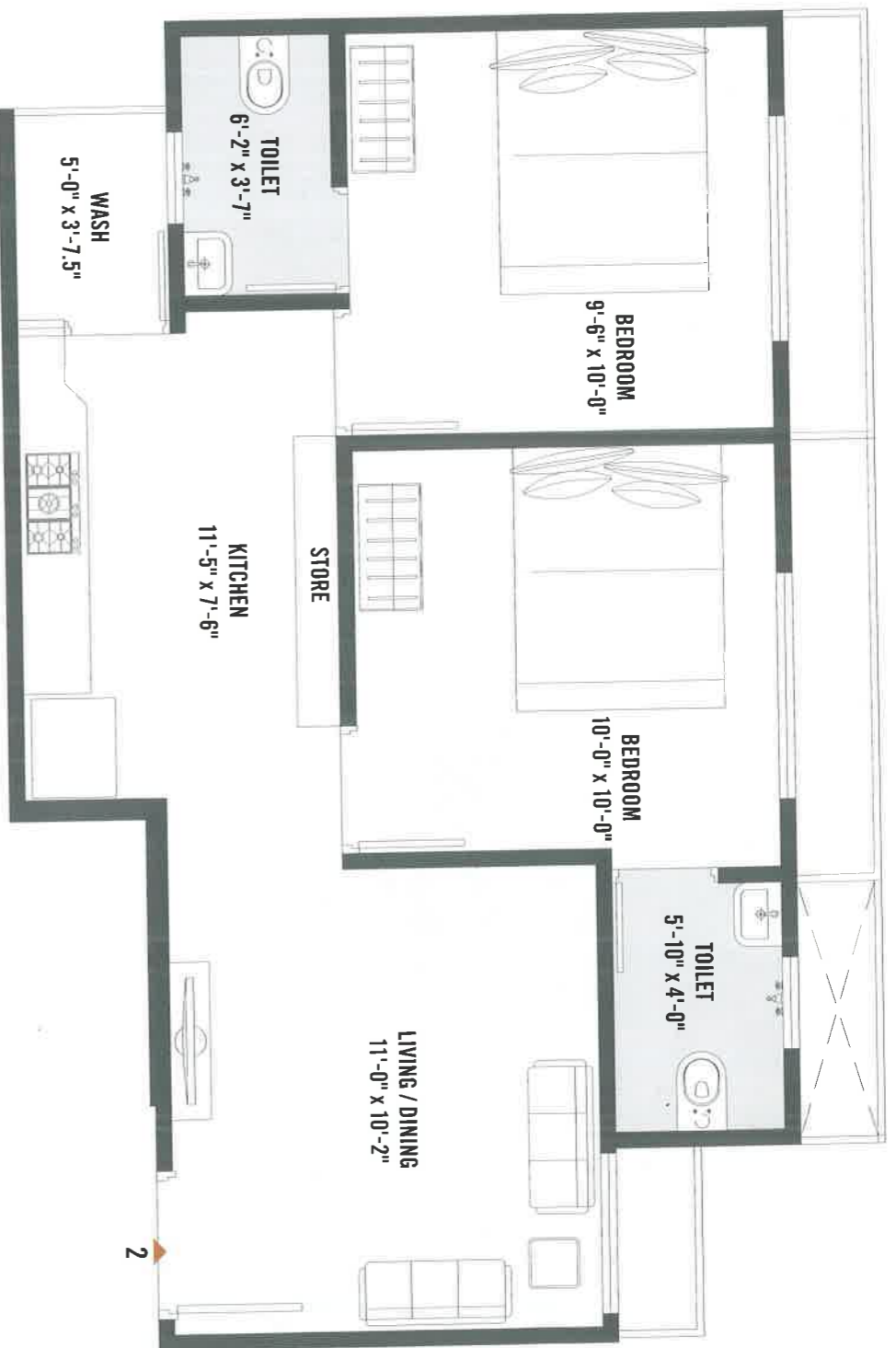
LIFT :
Two high speed elevator (omega / xpress) in each block.

1ST TO 7TH
TYPICAL FLOOR PLAN





**BLOCK -
B-1&2
C-1,2,3&4**
2 BHK UNIT PLAN



**BLOCK -
A-4 & B-3 & 4**
2 BHK UNIT PLAN

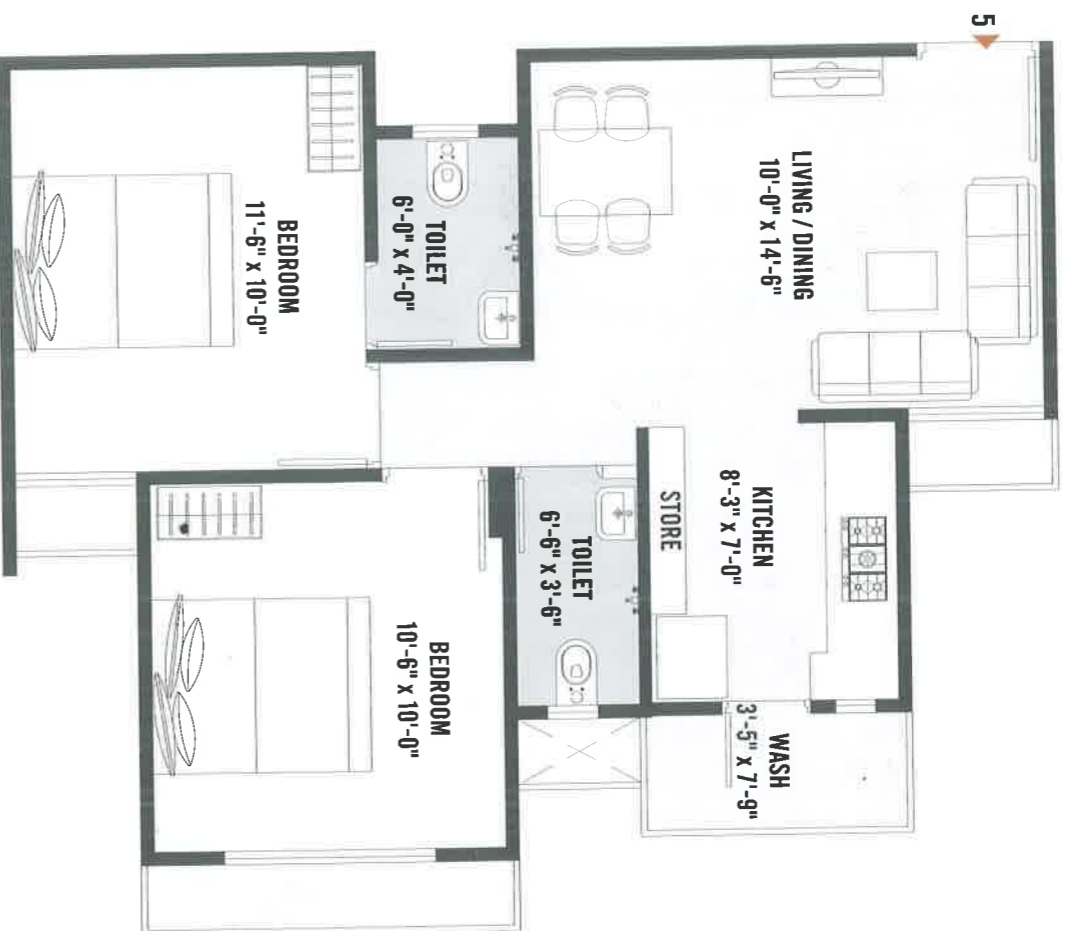


AMENITIES

- 
 Entrance Gate With Adequate Security
- 
 Childrens' Play Area
- 
 24X7 Water Supply
- 
 Street Lights
- 
 Senior Citizen Area
- 
 24X7 CCTV Surveillance



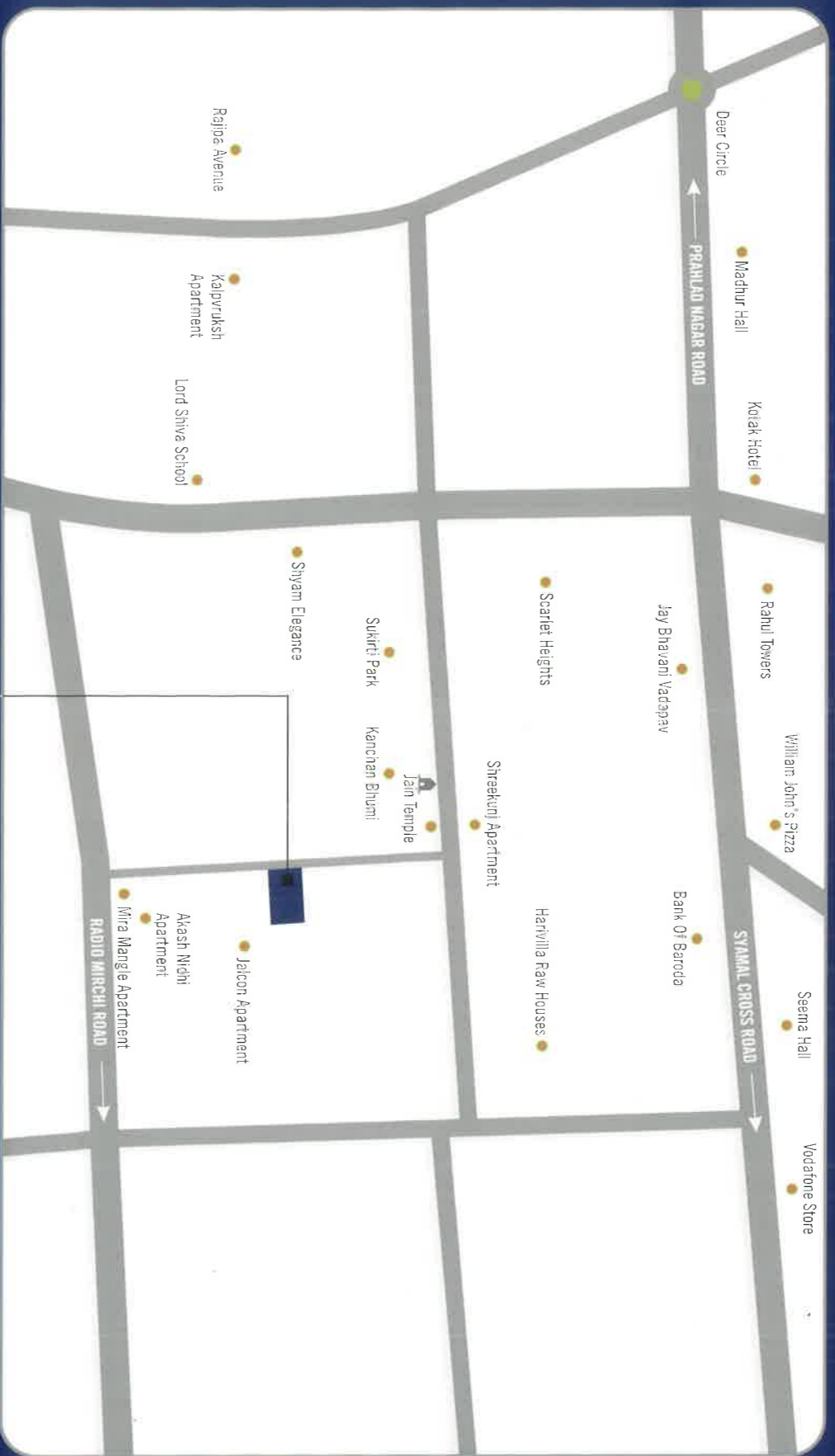
BLOCK - A - 3 & 5
2 BHK UNIT PLAN



BLOCK - A - 1 & 2
2 BHK UNIT PLAN

-  Landscape Garden
-  Branded Elevators
-  Ample Parking
-  Fire Safety Systems

LOCATION MAP



Saffron
binori
RESIDENCY

RERA REG. NO. -

www.gujrera.gujarat.gov.in

DEVELOPERS



ARCHITECT



STRUCTURE



ADDRESS : SAFFRON BINORI,
NR. RAHUL TOWER CROSS ROAD,
OPP. KANCHAN BHUMI APARTMENT,
AHMEDABAD - 380051.

CONTACT NO. :
+91 97121 10450 | +91 81603 97253

NOTE :

• A.M.C. - A.E.C. GST Electric Connection Charges & Maintenance Charges shall be borne by the members. • Legal & Stamp Duty Charges shall be borne by the members. • Any additional liabilities due to change in the A.M.C. bylaws, Stamp Duty, Govt. Laws shall be borne by the members. • All right reserve by developers for any change in project which shall be binding to all members. • Any internal changes shall be done only with prior permission & shall be charged extra. • This brochure shall not be considered as a part of legal document, it a only for easy display of project.