



## PROJECT BY **SAI CORPORATION**

Developer Office Address :

R.S. NO. 140, Revenue Block No. 83/B, T.P. Scheme No. 43 (Jahangirabad),  
F.P. No. 20/B, Jahangirabad, Surat 395009, Gujarat

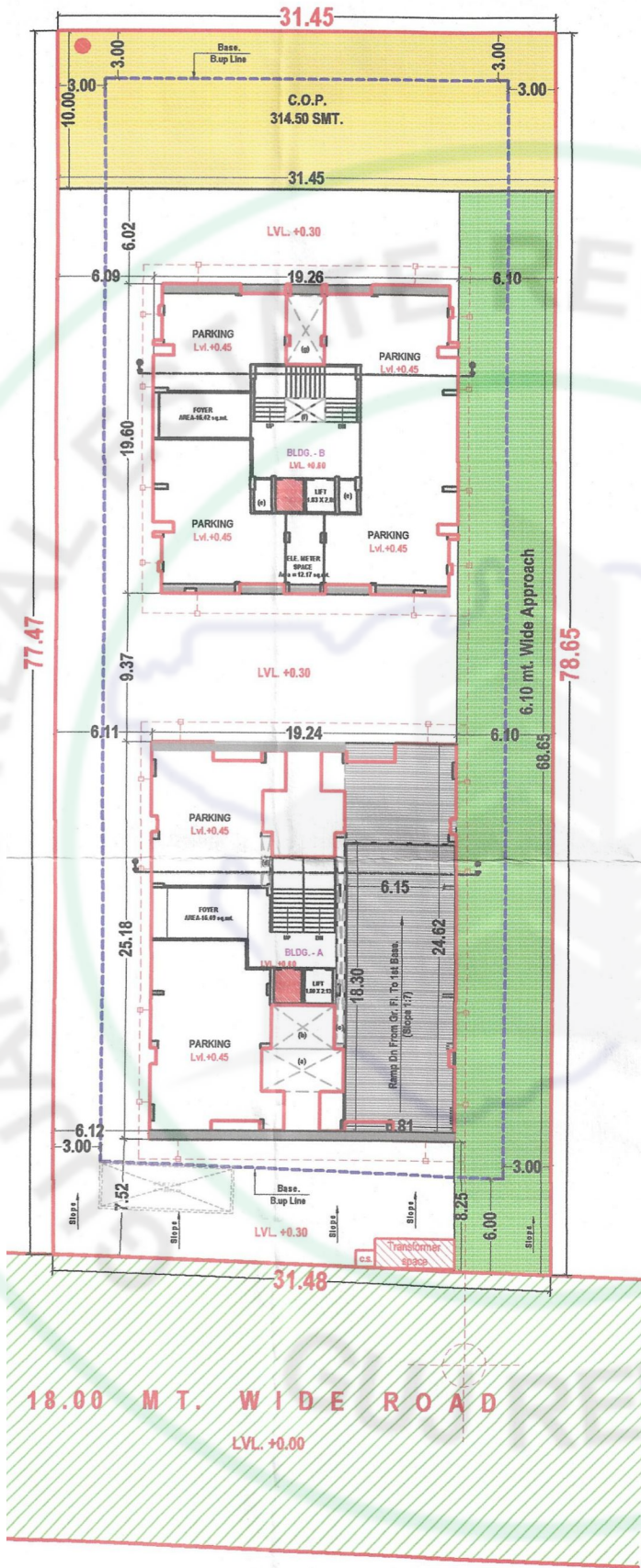
Contact No : +91 72020 79000

Email Id : saicorporation349@gmail.com

RERA NO : APPLIED

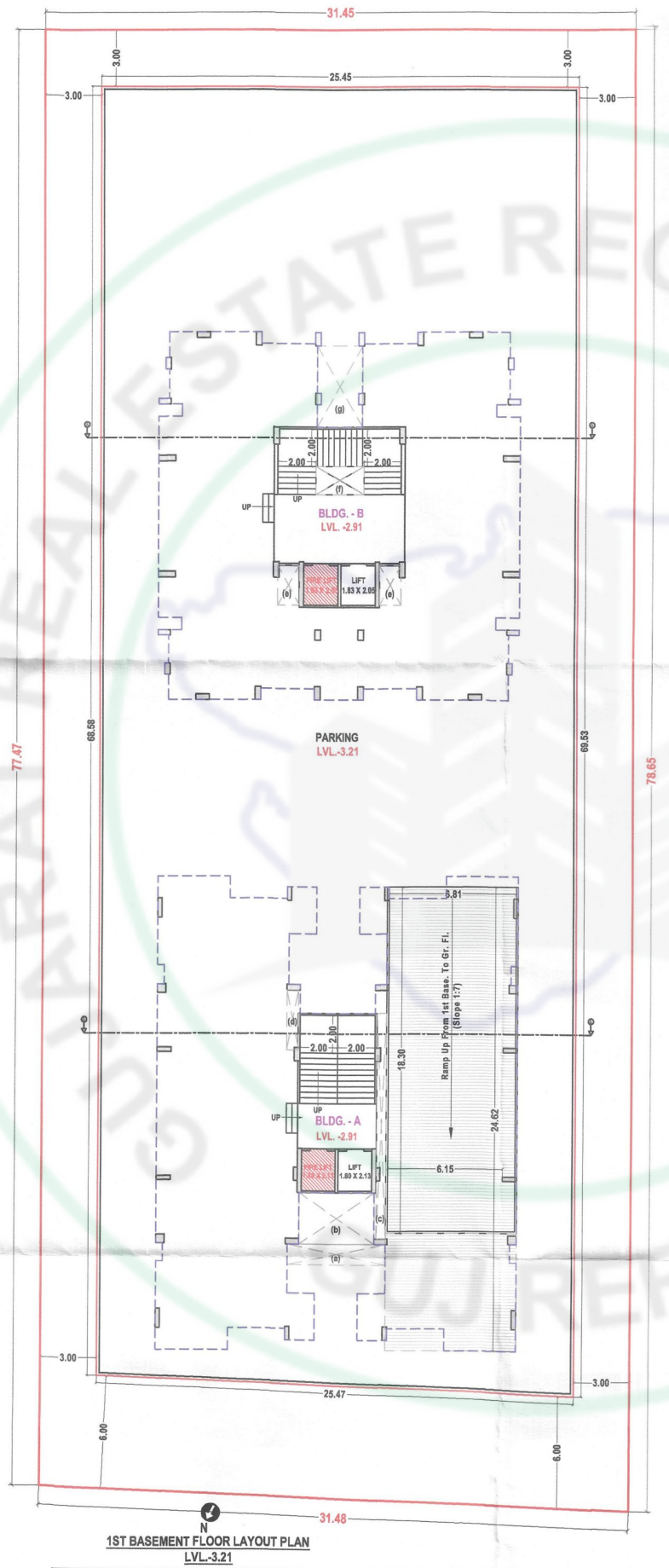
GUJRERA WEBSITE ADD : [www.gujrera.gujarat.gov.in](http://www.gujrera.gujarat.gov.in)





LAYOUT PLAN

  
 N  
 SITE PLAN  
 SCALE :- 1.00 CM.= 4.00 MT.

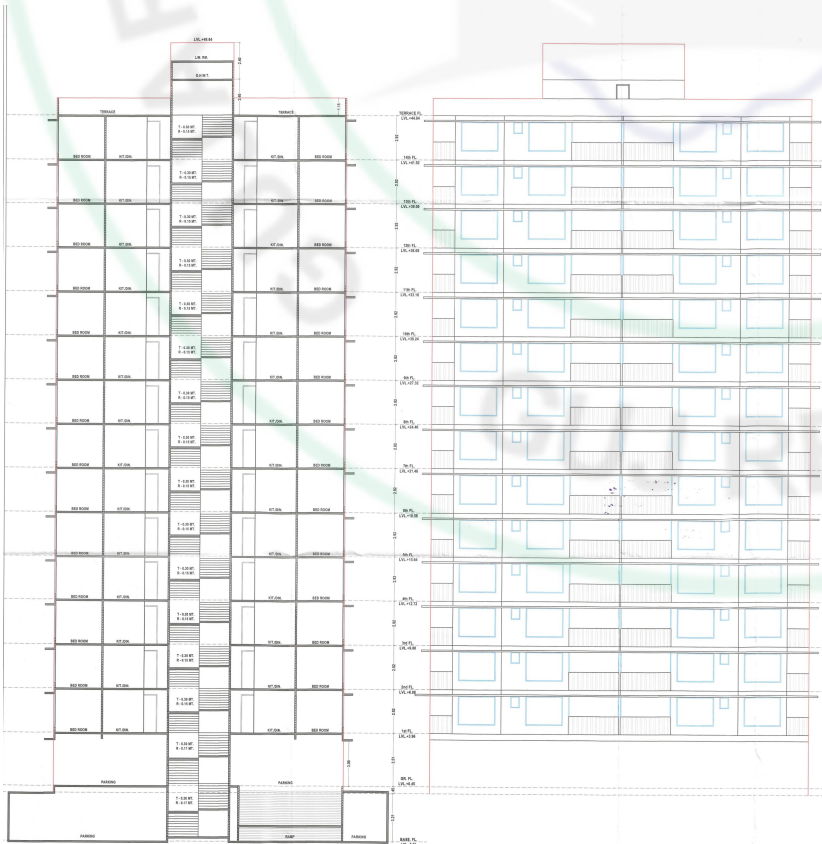
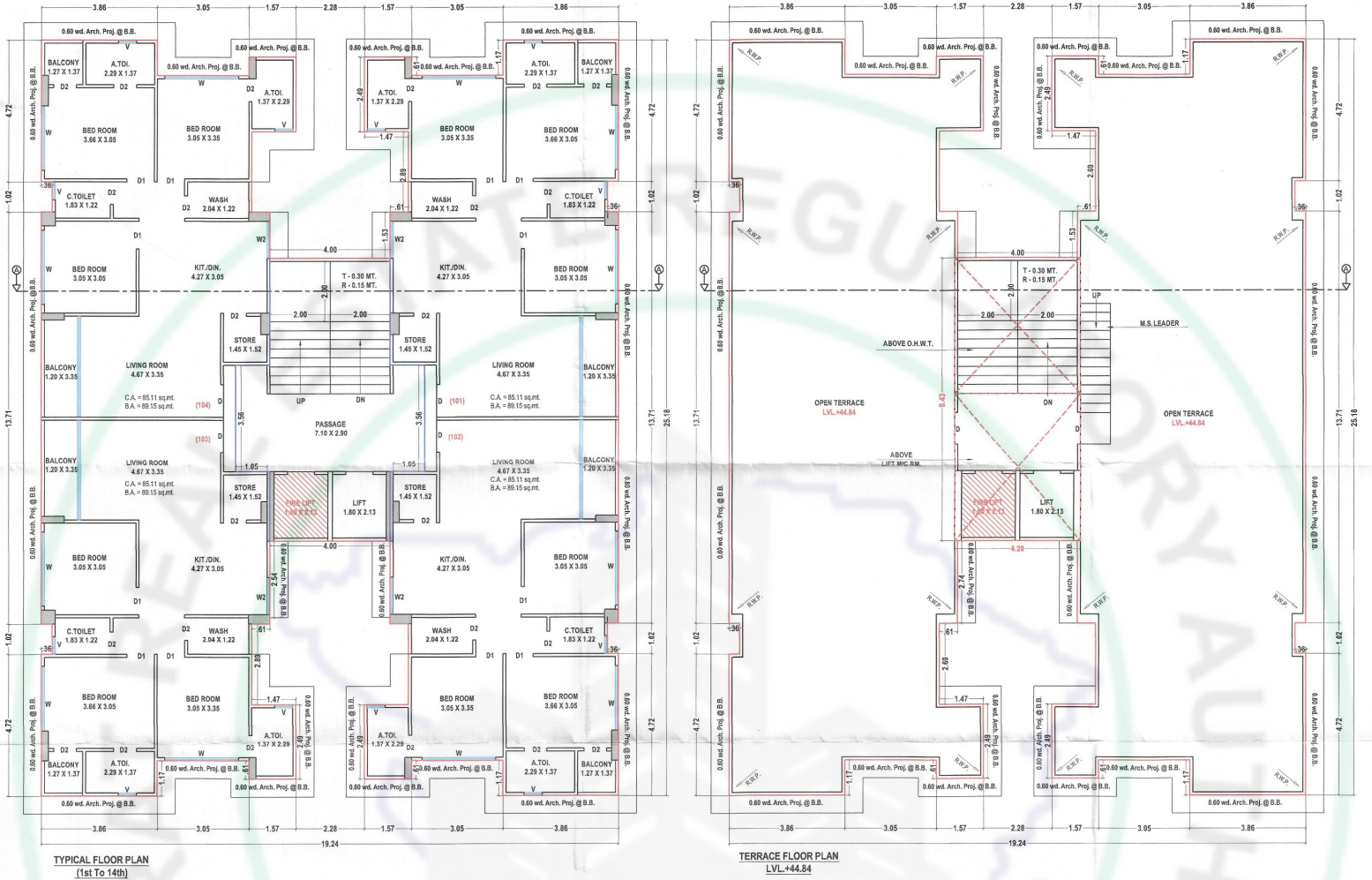


1ST BASEMENT FLOOR LAYOUT PLAN  
LVL.-3.21

## BASEMENT PLAN

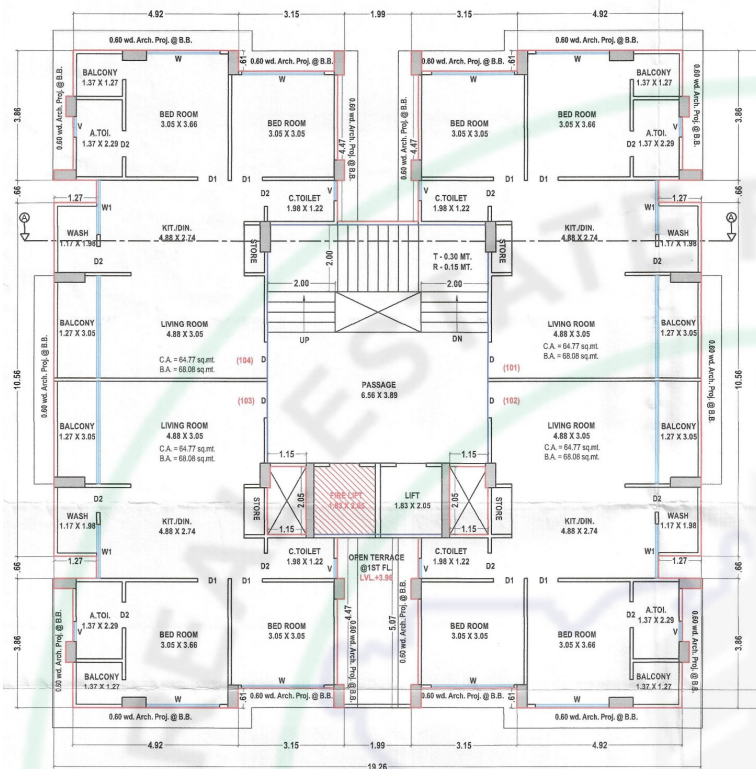


# A TOWER (3 BHK PLAN)

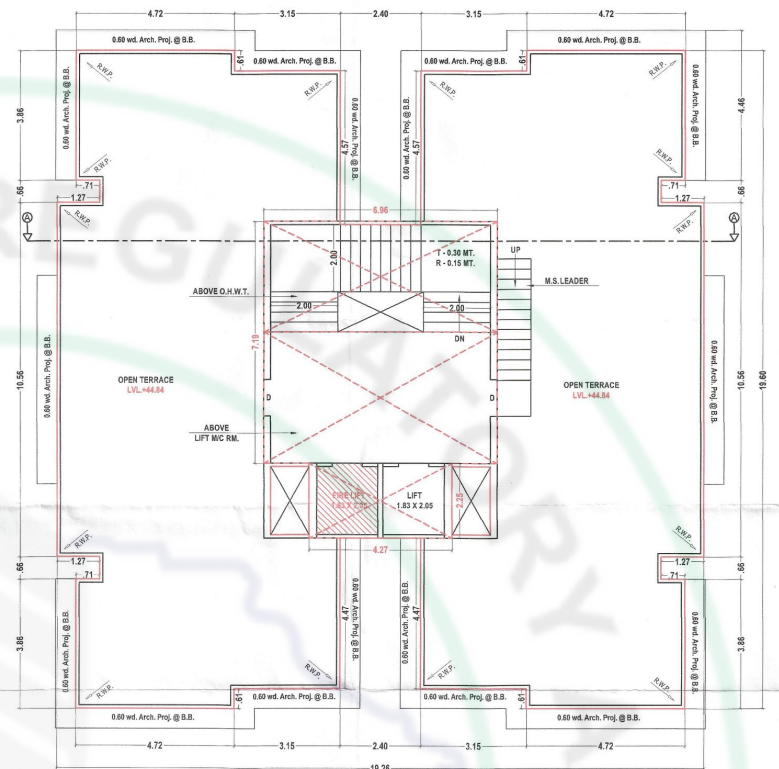


## A TOWER ELEVATION & SECTION PLAN

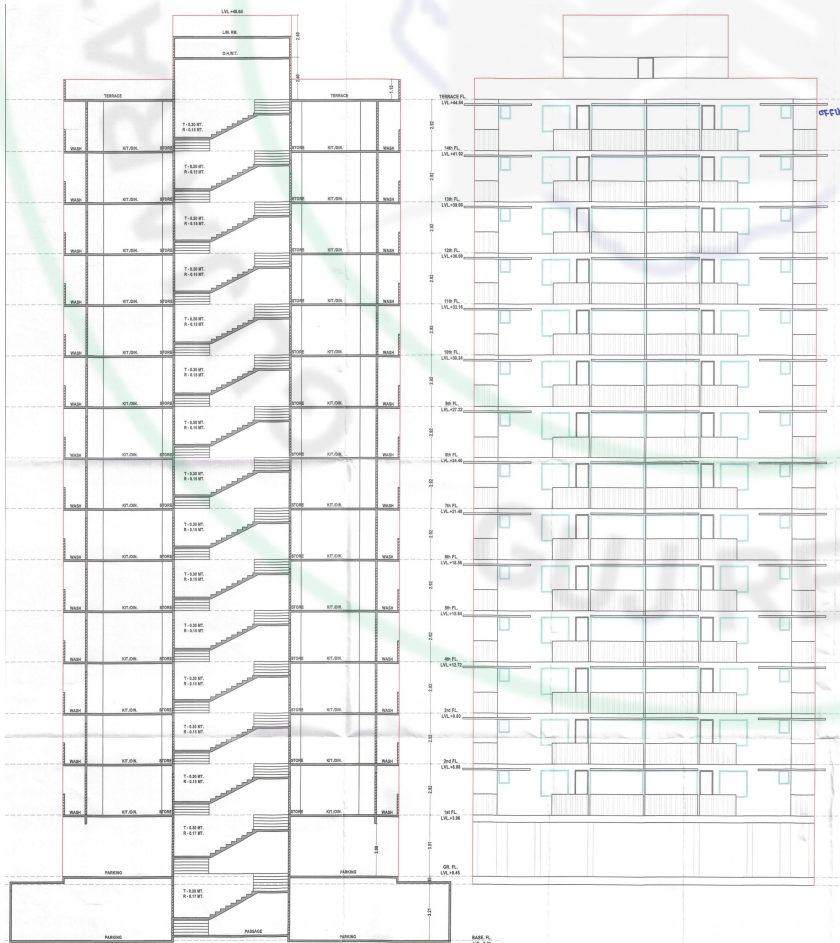
# B TOWER (2 BHK PLAN)



TYPICAL FLOOR PLAN  
(1st To 14th)



TERRACE FLOOR PLAN  
LVL +44.84



# B TOWER ELEVATION & SECTION PLAN





## PROJECT SPECIFICATION

### •QUALITY STANDARDS

- Structure Design as per latest IS codes.
- Bricks wall masonry.

### •FLOORING

- Standard quality 24" X 24" STD tiles.

### •FLOOR HEIGHT

- 2.92 Meter floor height slab to slab.

### •KITCHEN

- Granite platform with standard make.
- Best quality dado tiles above platform.
- STD kitchen sink.

### •WINDOWS

- Standard sliding aluminium section with glass Frames and Window sill in Marble .

### •ELECTRIFICATION

- Concealed IS copper wiring in each flat.
- Modular switches of standard make.
- A.C. points in hall and room.
- T.V. point in living

### •2 elevators in each building of STD

### •SECURITY

- CCTV surveillance

### •WASH

- STD flooring in wash area.
- Tiles dado.

### •TOILET

- Flooring and Dado tiles of standard make.
- Single lever concealed diverter with shower of standard make.
- Standard CP fittings and sanitary fittings.
- W.C. of standard make in all toilets.

### •PLUMBING

- CVPC / UPVC Piping for Water Supply System.
- Centrally Hot Water Supply in Bathroom.

### •DOOR & FRAMES

- Attractive main door with wooden frame.
- Other flush doors in granite frame.



## PROJECT SPECIFICATION

### •INTERIOR FINISH

- Single coat plaster with putty finish.

### •EXTERIOR FINISH

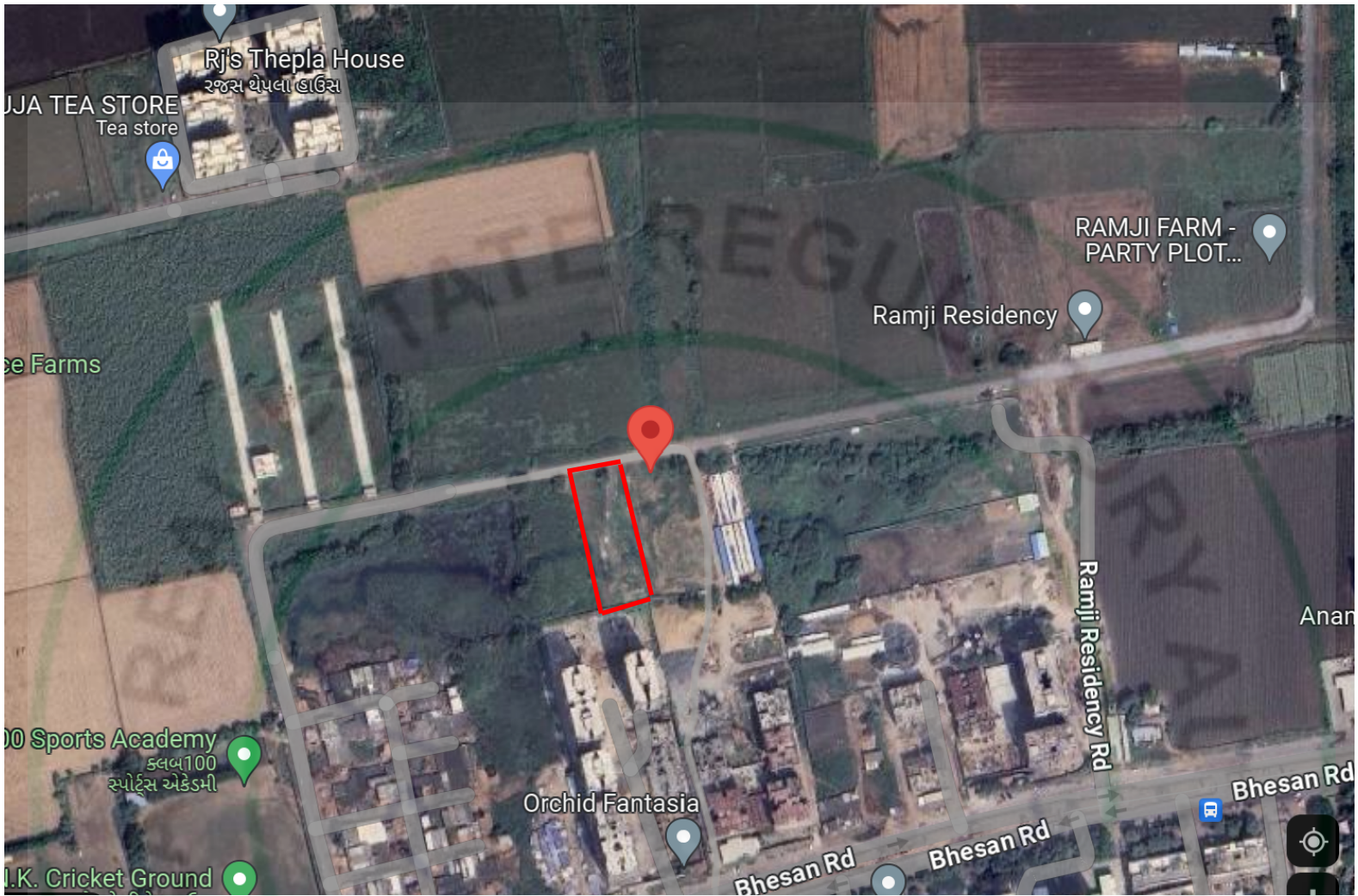
- Double coat plaster.
- Acrylic texture finish.
- Standard exterior colour.

### •TERRACE

- Double Coat Water Proofing with China-Mosaic Flooring



## LOCATION MAP



## OUR PROJECT PROFESSIONALS



**ARCHITECT**



**STRUCTURAL ENGINEER**

**SITE ADDRESS : R.S. NO. 140, Revenue Block No. 83/B, T.P. Scheme No. 43 (Jahangirabad),  
F.P. No. 20/B, Jahangirabad, Surat 395009**

**Email Id : saicorporation349@gmail.com**

**Contact No : +91 72020 79000**

**RERA NO. : APPLIED**

**GUJRERA WEBSITE ADD : [www.gujrera.gujarat.gov.in](http://www.gujrera.gujarat.gov.in)**