

# **SAIBABA HEIGHTS**

**2BHK LUXURIOUS APARTMENTS**

————— AT SUBHASH BRIDGE —————



# SAIBABA HEIGHTS

2BHK LUXURIOUS APARTMENTS

————— SUBHASH BRIDGE —————

Exotic living can mean different things to different people, but in the context of this piece, it means to live life in a true and authentic way. Humans, by nature, are exotic beings. We were meant to be. Could you imagine a world where everyone was the same? We are all shaped by our different perspectives, views and lifexperiences.



# **SAIBABA HEIGHTS**

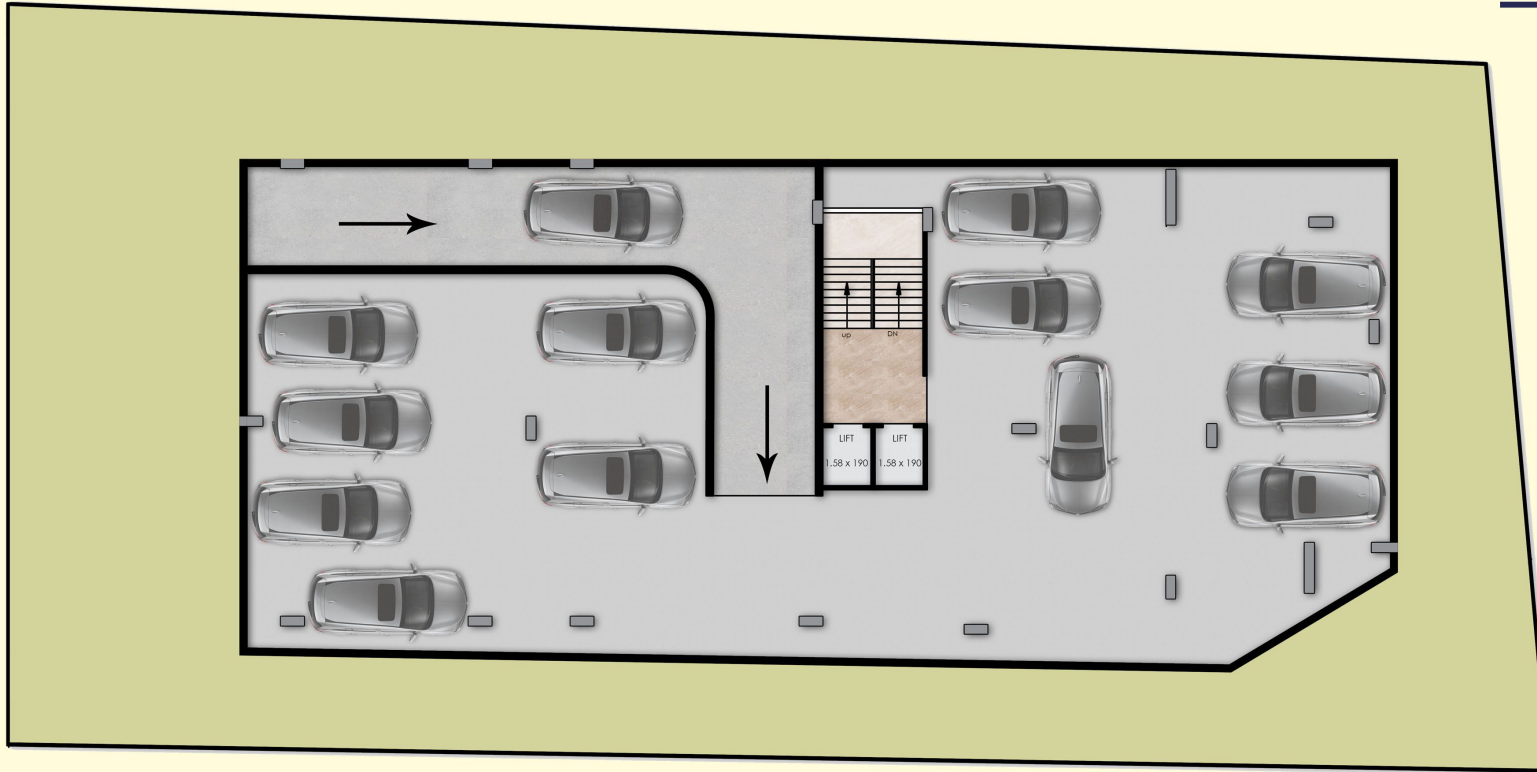
**2BHK LUXURIOUS APARTMENTS**

**SUBASH BRIDGE**

You are known by the lifestyle you adopt. Lives encircle around the delights of a home. Those little pebbles of glee that always stay protected in the cocoon of luxury, wrapped in charm and covered with memories are the perfect interpretation of a lifestyle filled with luxury.



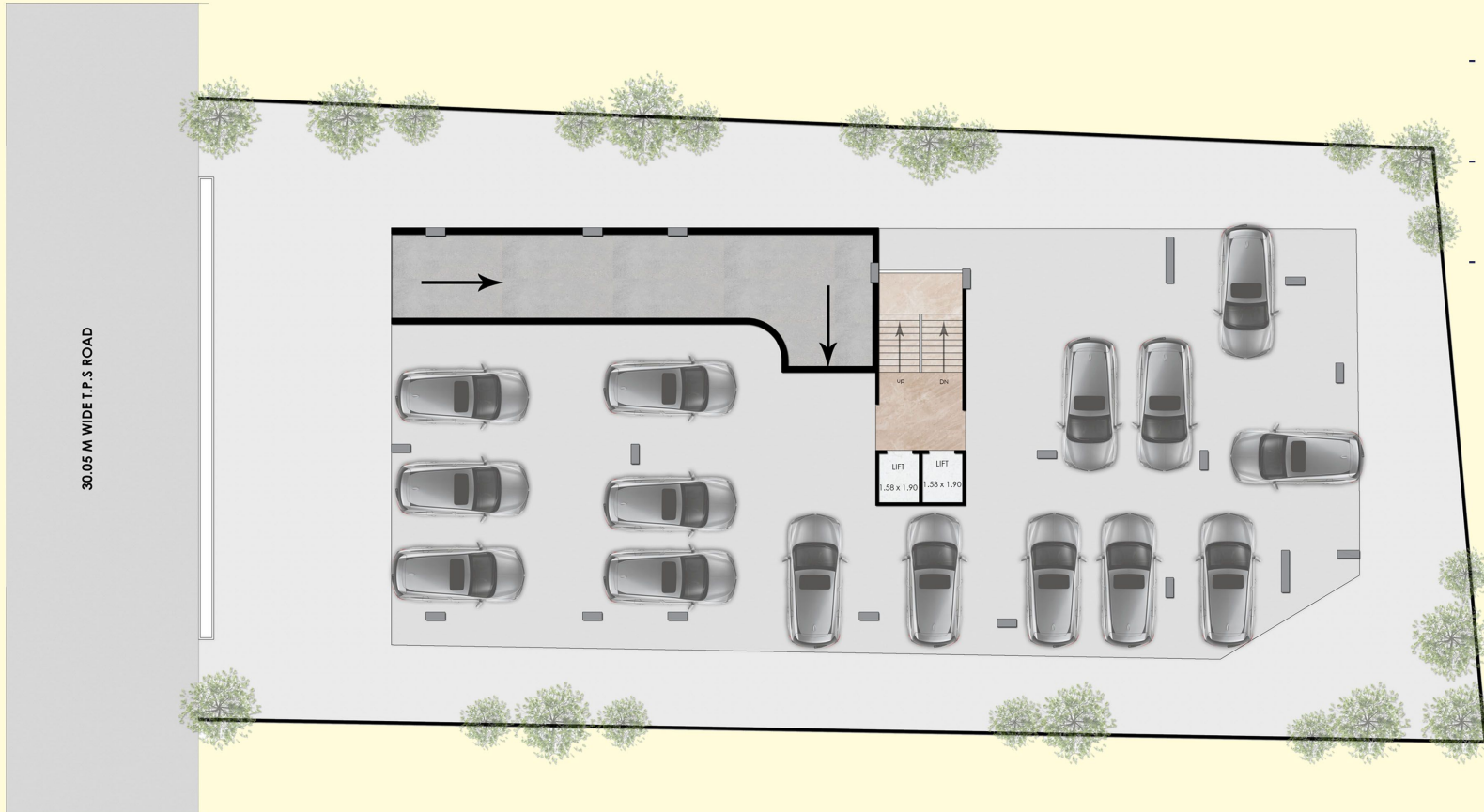
## **BASEMENT PLAN**



- More available land with parking under building.
- Enhance access.
- Minimize maintenance
- Maintain traffic security



## GROUND FLOOR PLAN



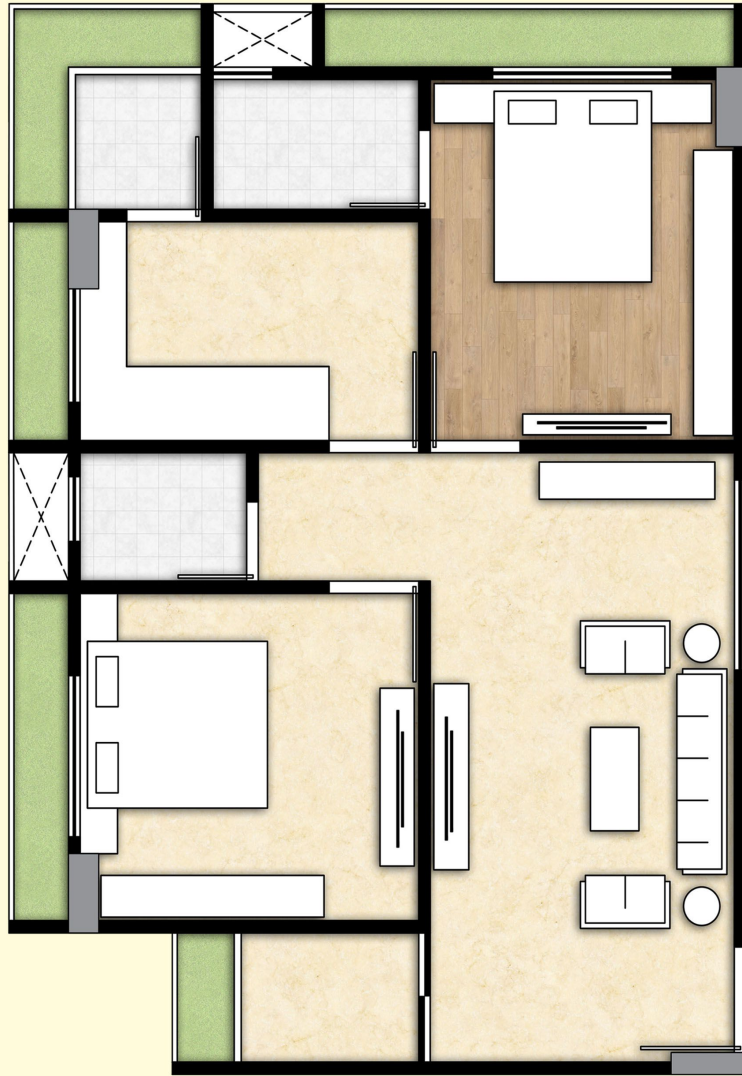
- CONVENIENT GROUND FLOOR PARKING.
- RESIDENTS HAVE MORE SPACE TO ENJOY
- GREEN SPACE WITH OPEN AREA AND SITTING ARRANGEMENTS.



# TYPICAL FLOOR PLAN

FIRST TO SEVENTH FLOOR





## TYPE A

LIVING ROOM	- 5.76 X 3.05
BALCONY	- 1.21 X 1.85
KITCHEN	- 2.07 X 3.39
WASH AREA	- 1.35 X 1.36
BEDROOM	- 3.10 X 3.39
C. TOILET	- 1.22 X 1.67
M.BEDROOM	- 3.42 X 3.05
ATT. TOILET	- 1.23 X 2.07



## TYPE B

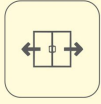
LIVING ROOM	- 5.15 X 4.79
KITCHEN	- 2.61 X 2.40
WASH AREA	- 2.26 X 1.32
BEDROOM	- 3.65 X 3.25
BALCONY	- 1.40 X 1.48
C. TOILET	- 1.39 X 1.73
M.BEDROOM	- 3.05 X 3.37
BALCONY	- 1.33 X 1.25
ATT. TOILET	- 1.80 X 1.22



## Amenities



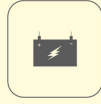
Entrance Gate With Adequate Security



Stretcher Friendly Automatic Elevators



Basement Parking



Power Back For Common Amenities



24 x 7 Water Supply



DTH & TV Connections



Fire Safety Systems



24 x 7 CCTV Surveillance

## Specifications

### Flooring

- 24'x24' vitrified tiles in all area

### Walls

Internal walls and ceiling - mala plaster with wall putty.

External walls - double coat sand-face plaster with apex paint.

### Kitchen

\*Kitchen platform with granite top and stainless steel sink.

Designer ceramic tiles dado on kitchen counter up to 7ft ht

### Doors and Windows

- Main entrance doorsolid core Fush door with both side moulded designer door skin.
- Other Fush doors with both side laminate.
- Anodized aluminum sliding windows with quality bearings and fittings and stone sills and jambs.

### Water Supply

- Centralize water supply system

### Toilet

- Designer tiles on Door and walls up to lintel level.
- Branded C.P fossets.
- Branded range of ceramic sanitary ware

### Plumbing

- C.P.V.C. Water supply pipes durable PVC drainage pipes for solid waste and drainage systems.

### Electrical Work

- Branded modular switches
- Concealed copper wiring with adequate number of points in all rooms
- Each room will have tv, AC & cable points
- MCB distribution panel for extra safety.

### Roof

- Brick-bat concrete for heat reflection and thermal insulation





KEY PLAN



CONSULTANT



DEVELOPER



STRUCTURAL DESIGNERS



Reg. RERA NO. : \_\_\_\_\_

Website : <http://gujrera.gujarat.gov.in>

Note : All data and information provided herein(including but not limited to the layout ,design etc.) is provided on indicative basis and the same may be subjected to change or withdrawal without notice .All data and information provided herein are solely intended to provide general information and any information of special interest should be obtained through independent verification.