

# SAKINA *Orchid*

THE FOUNDATION OF YOUR  
FUTURE STARTS HERE.

2023

STRUCTURES THAT  
STAND THE TEST  
OF TIME.

# SAKINA *Orchid*



CRAFTSMANSHIP YOU  
CAN COUNT ON.

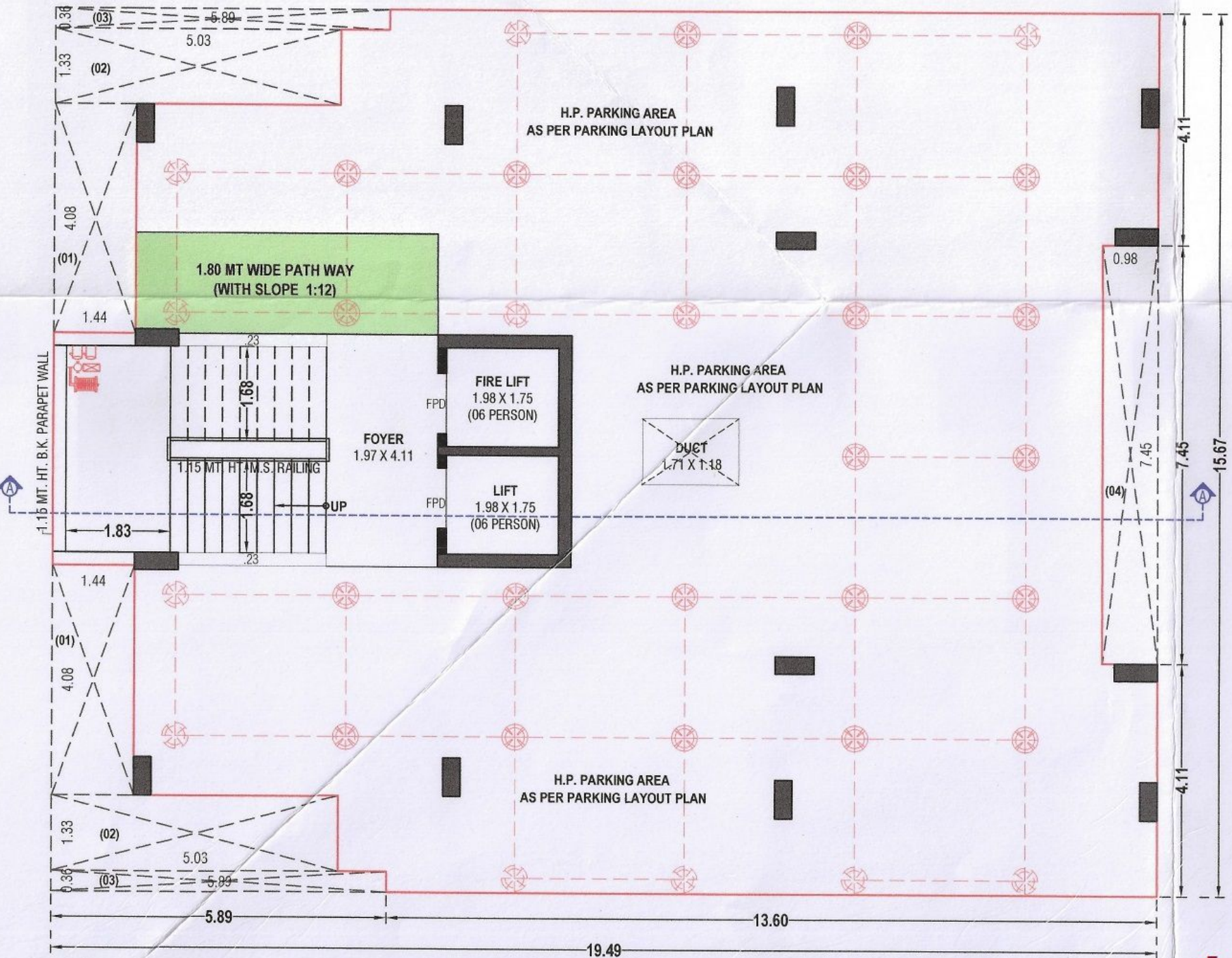


SAKINA *Orchid*

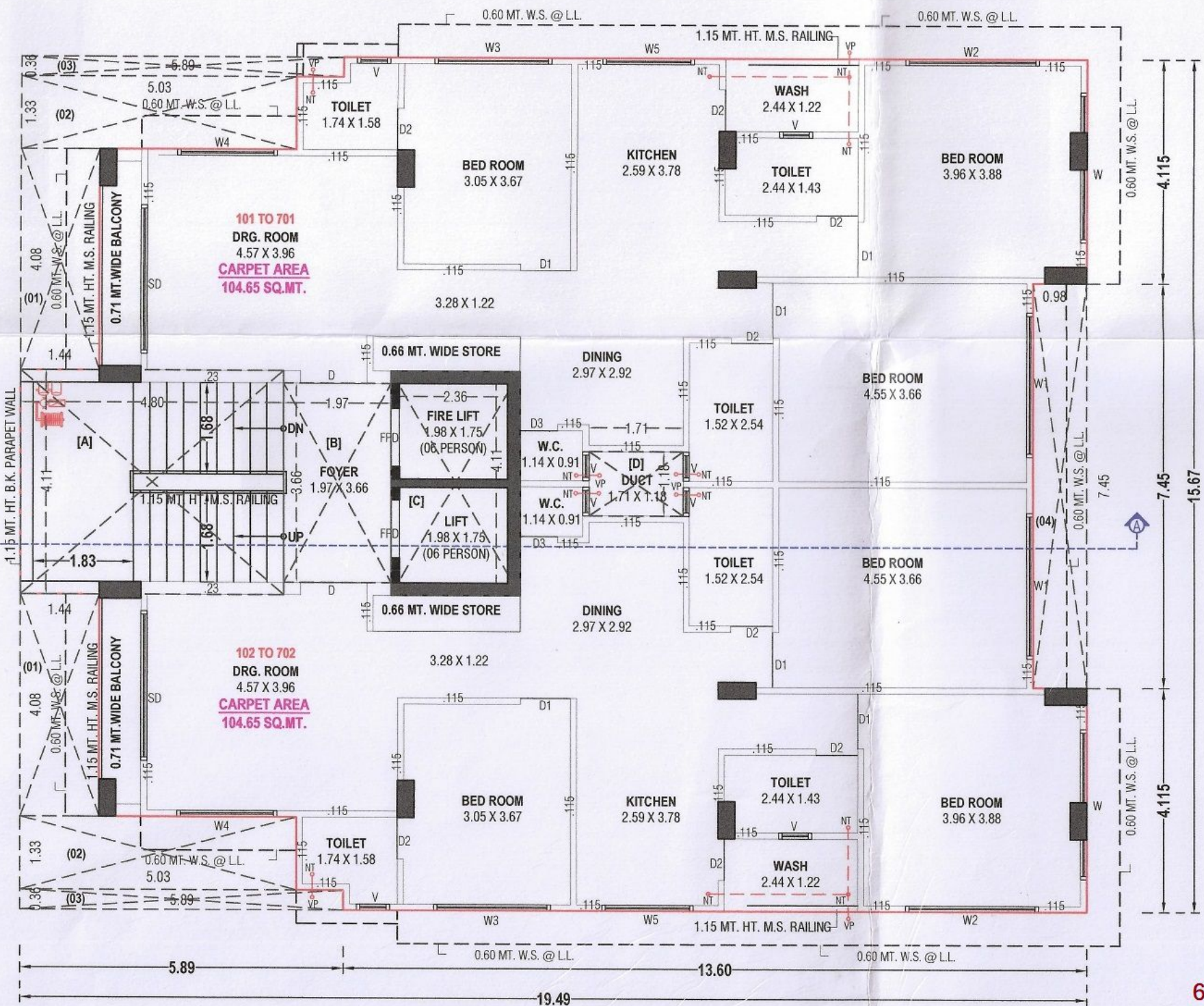
CRAFTSMANSHIP YOU  
CAN COUNT ON.



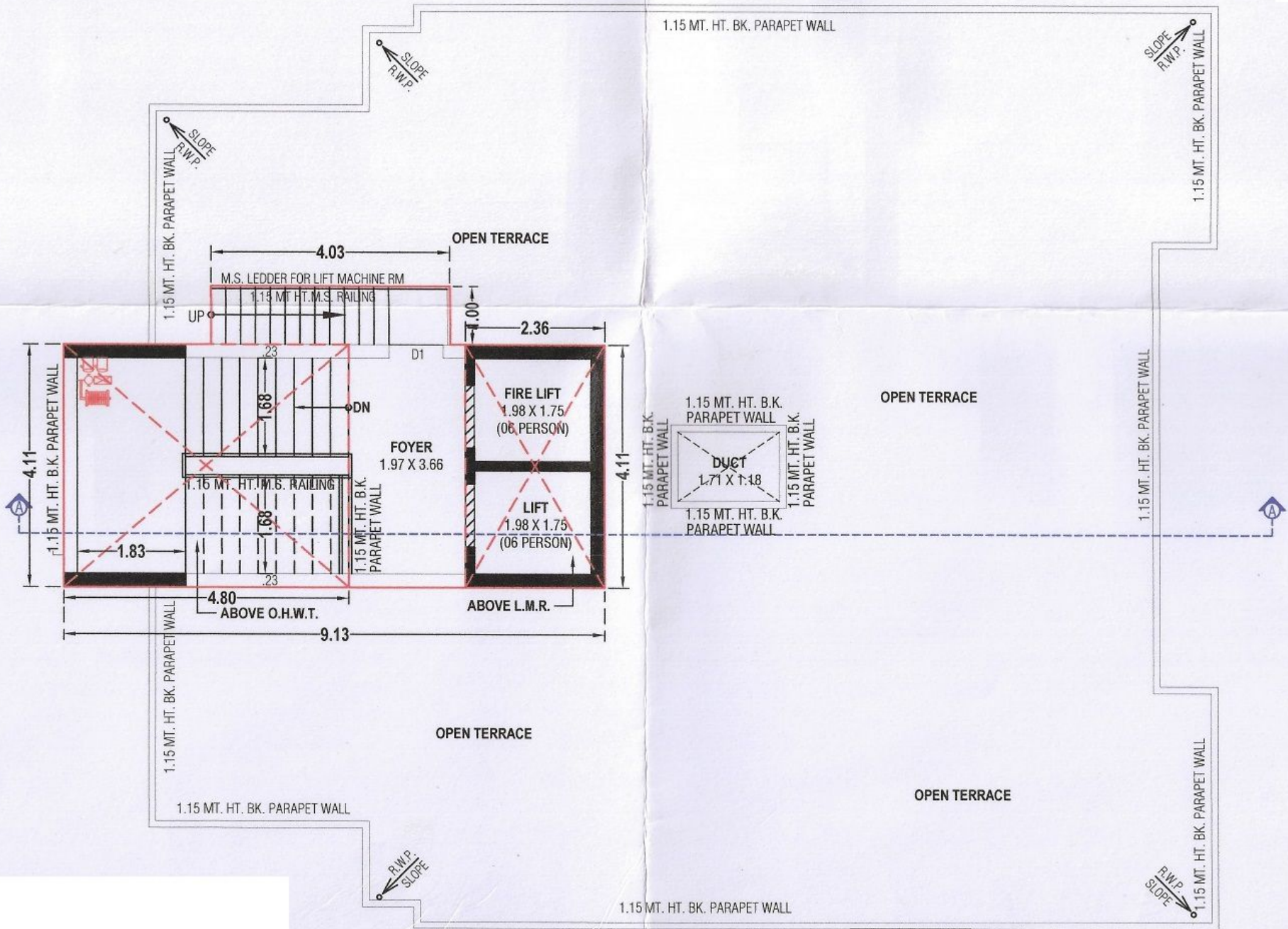
SAKINA *Orchid*



**GROUND FLOOR (HOLLOW PLINTH) PLAN**

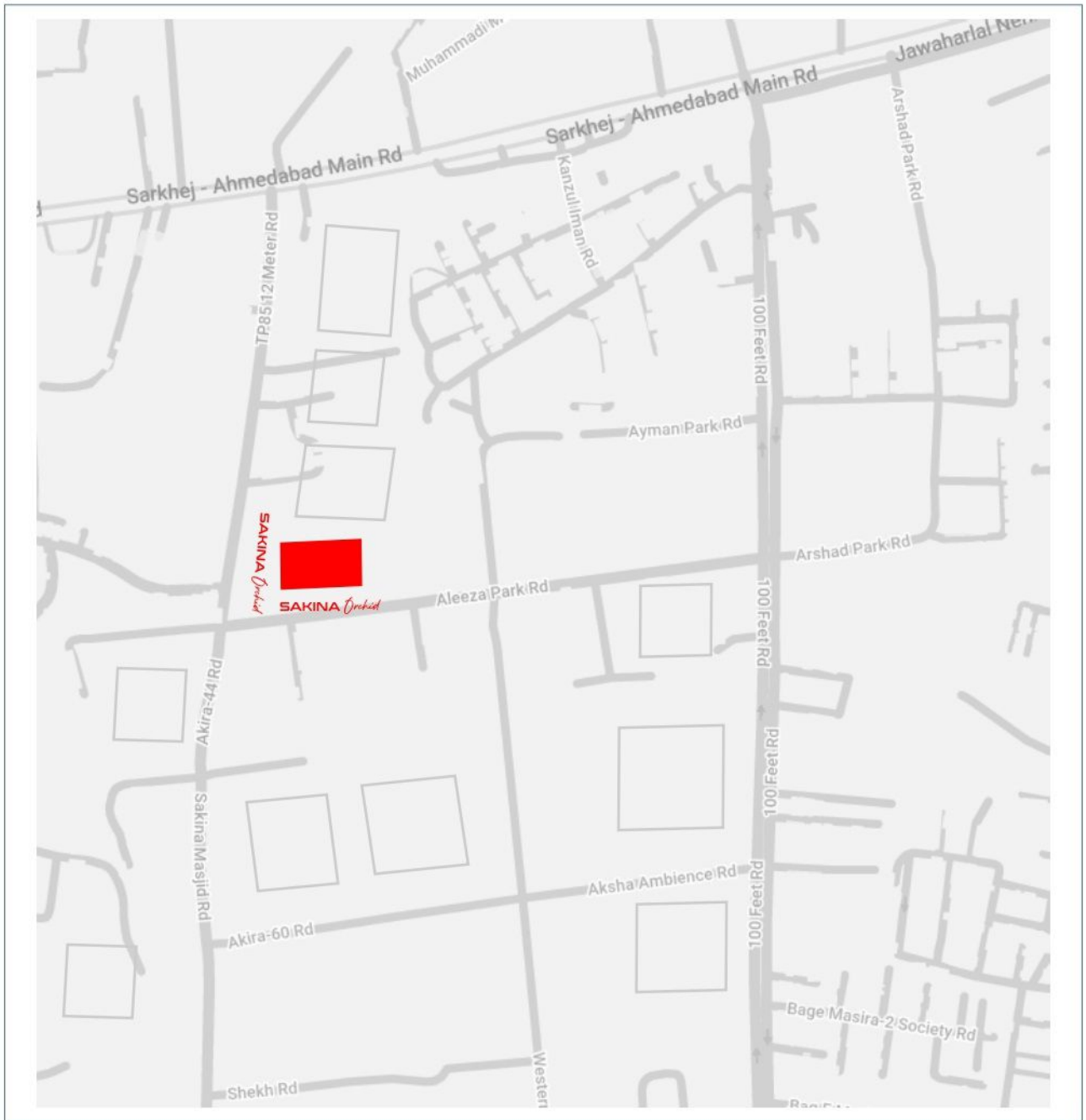


TYPICAL (1ST. TO 7TH.) FLOOR PLAN



**STAIR CABIN, L.M.R., O.H.W.T. & OPEN TERRACE PLAN**

# KEY LOCATION





## SPECIFICATIONS COVERING ALL THE NEEDS.



### STRUCTURE

EARTHQUAKE RESISTANT R.C.C. FRAME STRUCTURE.

---



### FLOORING

GOOD QUALITY VITRIFIED TILES & MARBLE IN ENTIRE APARTMENT.  
WATER PROOFING TREATMENT ON TERREACE

---



### ELECTRIFICATION

CONCEALED COPPER WIRING WITH MODULAR SWITCHES &  
SUFFICIENT NUMBER OF POINTS WITH MCB DISTRIBUTION PANEL,AC  
& GEYSER POINTS.

---



### DOORS & WINDOWS

DECORATIVE MAIN DOOR WITH GOOD QUALITY FRAME.  
ALL OTHER DOORS ARE FLUSH DOOR WITH GOOD QUALITY FITTINGS.  
ANODIZED COATED ALUMINUM SLIDING WINDOW WITH STONE SEAL.

---



### TOILET/PLUMBING

DESIGNER GLAZED TILES UP TO LINTEL LEVEL PREMIUM QUALITY BATH  
FITTINGS & SANITARY WARES.



# SAKINA *Orchid*

## CONTACT US

**ZAKI MOMIN**  
**070461 09001**

**TAIB MOMIN**  
**097121 45078**

TP85 12 Meter Road Opp.Sayyida-Sakina Mosque,  
Nr. Apex Apartments, TP 85, Ahmedabad, Gujarat 380055

RERA NO. \_\_\_\_\_

Project maintained & handled  
BY RAABEE DEVELOPERS