



3-4 BHK APARTMENT

SHALIN  
**LEGACY**

*Your Gateway To A Richer Life*

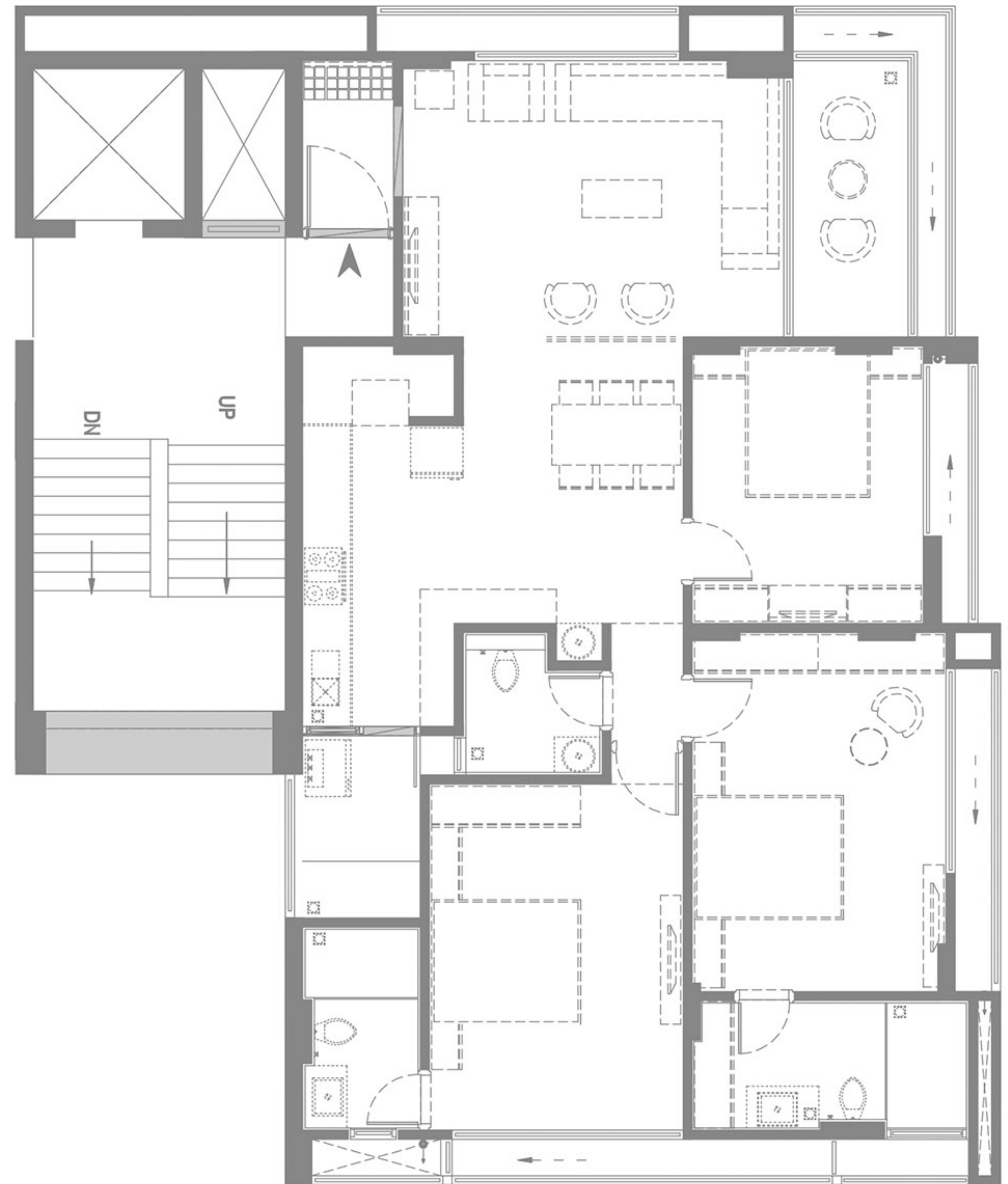
# SHALIN LEGACY

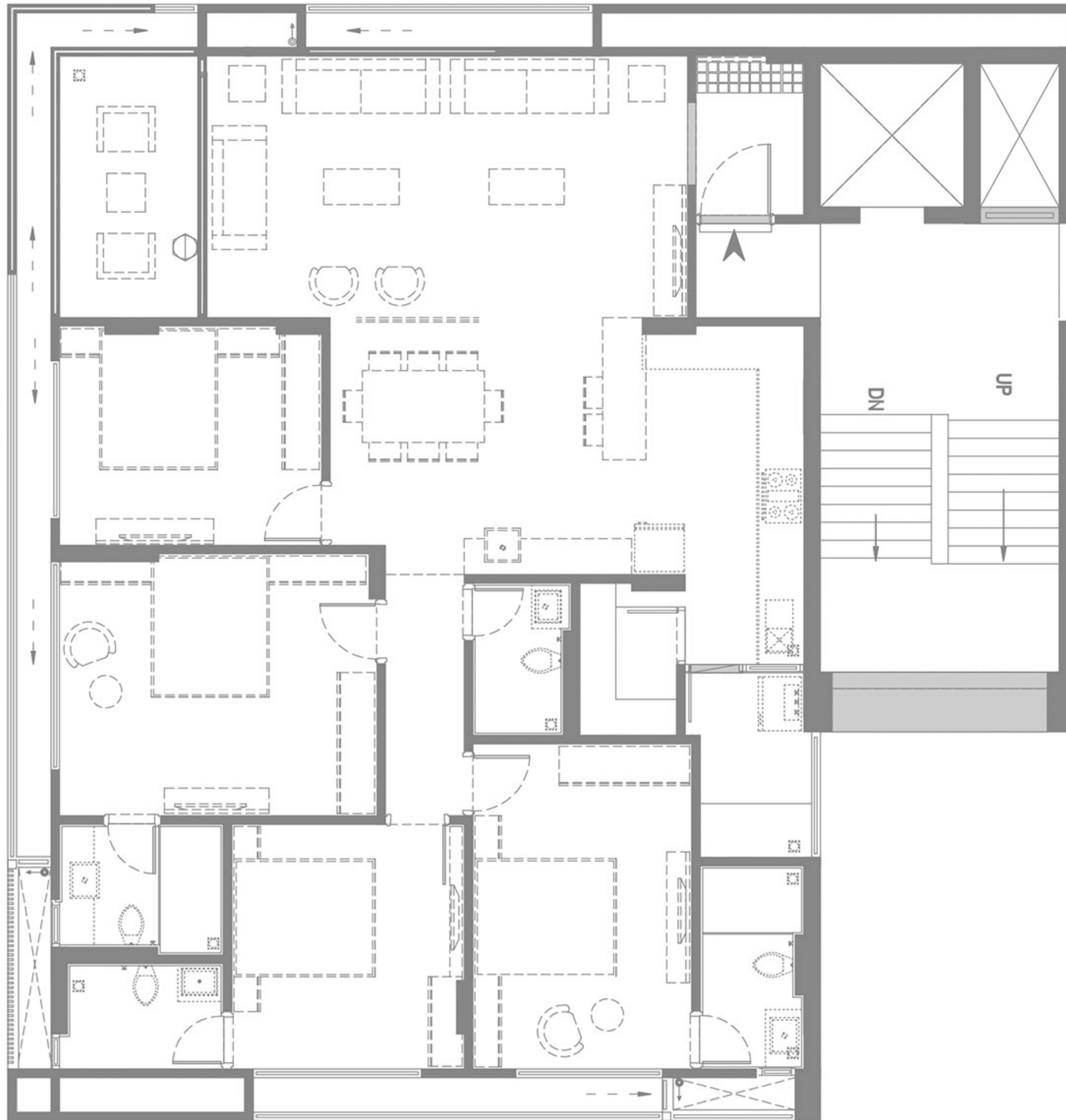
3-4 BHK APARTMENT



## 3 BHK UNIT **1** 101 TO 501

1A	Vestibule	7'3" × 4'
1	Living Room	12' × 16'6"
1B	Varandah	12' × 5'
2	Dining	12'5" × 9'6"
3	Kitchen	13' × 7'
3A	Store	3'5" × 6'7"
3B	Kitchen Yard	8' × 5'1"
4	G. Toilet	6'2" × 6'
5	M. Bedroom-1	15" × 11'
5A	Toilet	9' × 5'5"
6	M. Bedroom-2	15'8" × 11"
6A	Dress & Toilet	5'6" × 12'
7	Bedroom-3	12' × 10'





**SHALIN**  
**LEGACY**

3-4 BHK APARTMENT



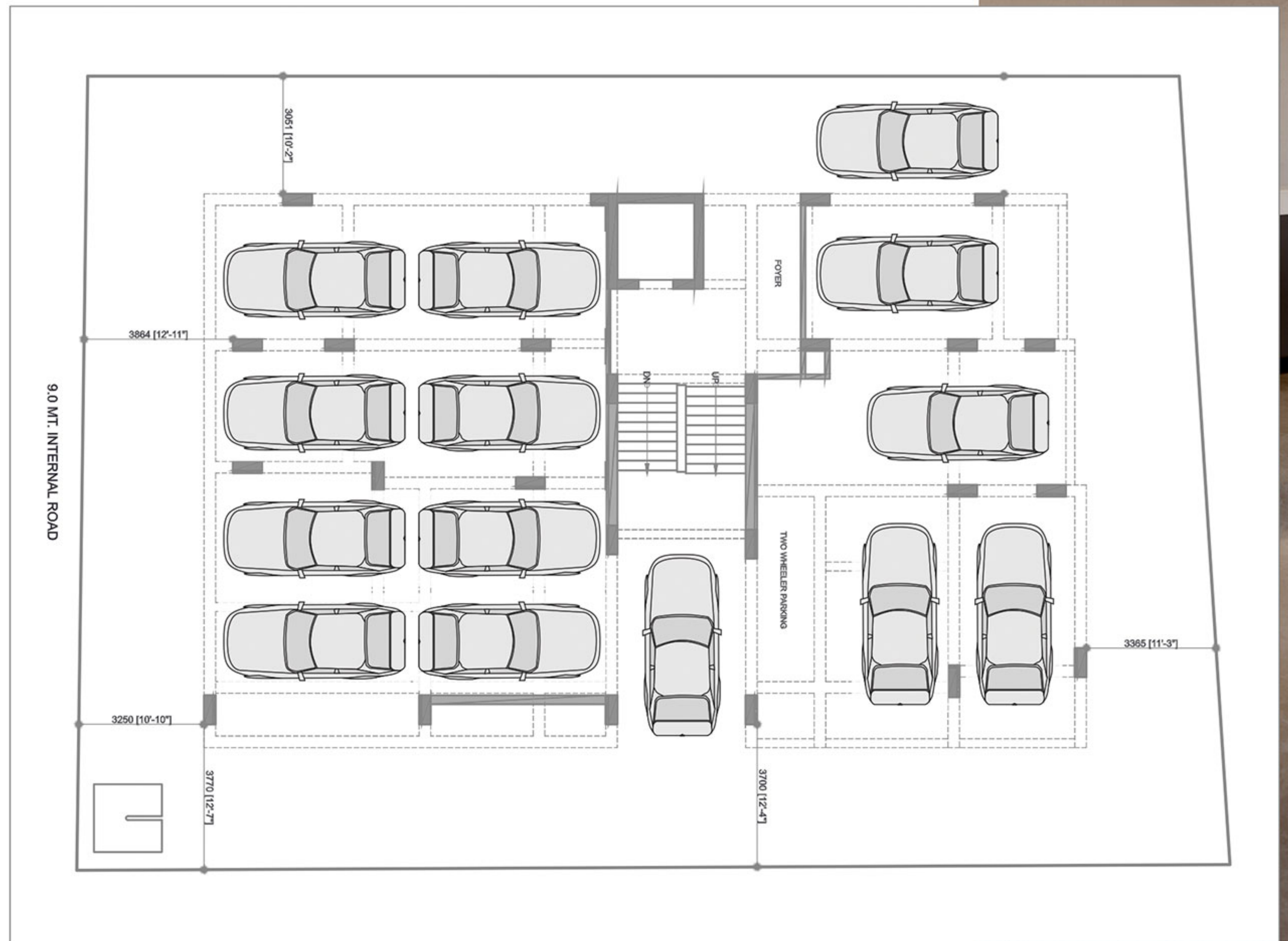
4 BHK  
**UNIT 2**  
**102 TO 502**

1A	Vestibule	7'3" × 5'
1	Living Room	12' × 22'
1B	Varandah	12' × 6'4"
2	Dining	11'9" × 12'6"
3	Kitchen	15'6" × 9'2"
3A	Store	7' × 4'6"
3B	Kitchen Yard	8'5" × 5'1"
4	G. Toilet	7' × 4'6"
5	M. Bedroom-1	15" × 10'
5A	Toilet	9'4" × 5'1"
6	M. Bedroom-2	11'2" × 10'8"
6A	Toilet	4'10" × 7'6"
7	Bedroom-3	12' × 14'6"
6A	Toilet	6' × 7'6"
8	Bedroom-3	10' × 12'

**SHALIN**  
**LEGACY**  
3-4 BHK APARTMENT



**Ground Floor**  
**PLAN**



SHALIN  
**LEGACY**  
3-4 BHK APARTMENT





**Architect:**

Apurva Amin

**Structure:**

Nelson N. Macwan

**Developer:**

Sangam Infrabuild

+91 95740 77702

[www.ssbinfraobjects.com](http://www.ssbinfraobjects.com)

---

**Site Address:**

3, Gujarat Brahmakshatriya society,  
Besides Shatpathya Flats,  
Ahead Red Cross Blood Bank,  
Paldi, Ahmedabad.

