



# SHOOLIN

BUNGLOWS

4 BHK LUXURIOUS VILLA



*Greens in Equal Measure*

**4 BHK**  
**LUXURIOUS VILLA**



વધુ **પુશીઓની** અનુભૂતિ



## AMENITIES



Elegant  
Entrance Gate



CCTV  
CAMERA



24 HRS.  
SECURITY



24 X 7  
WATER SUPPLY



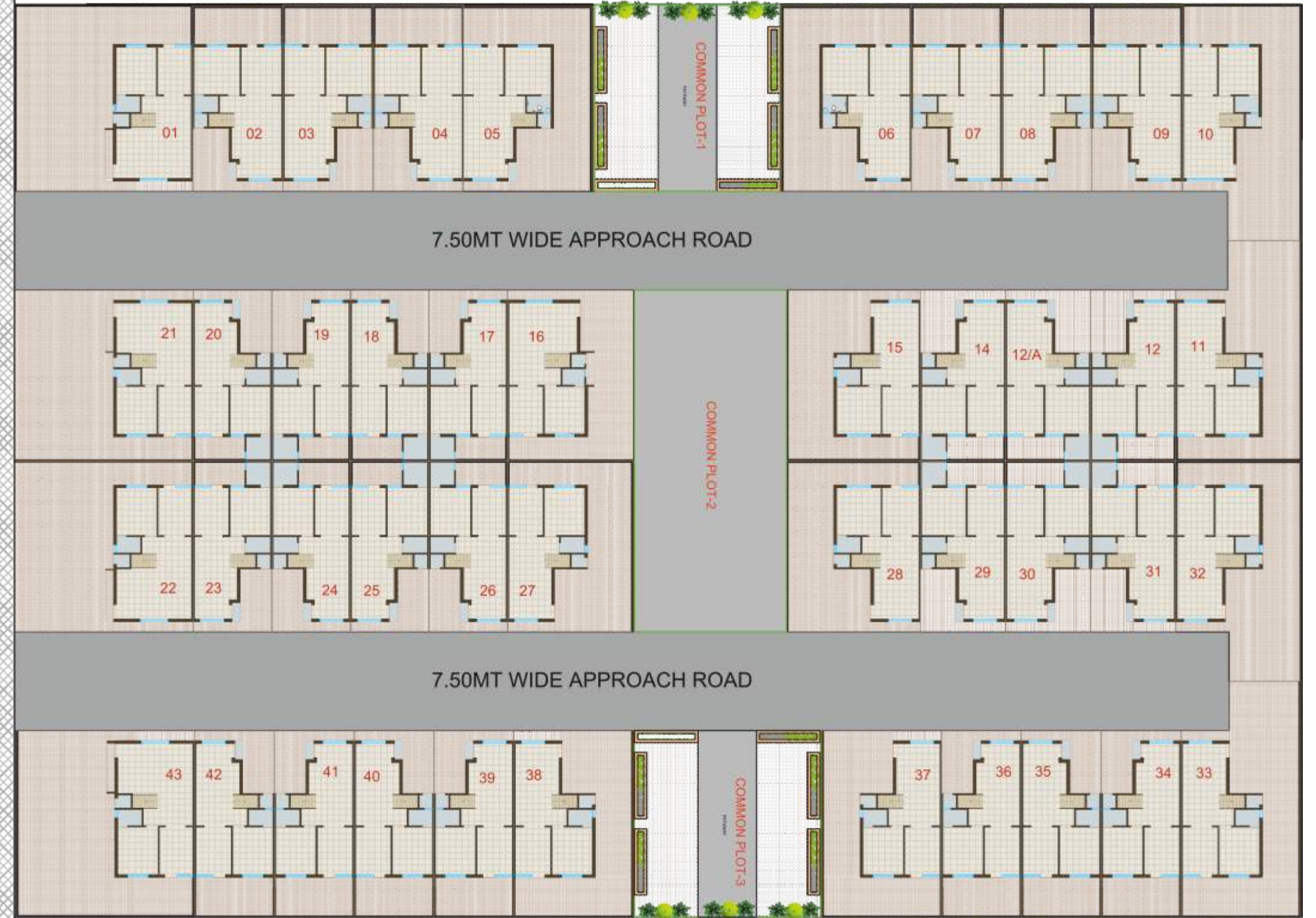
GARDEN  
SPACE





30.00MT WIDE T.P.S ROAD

LAYOUT PLAN



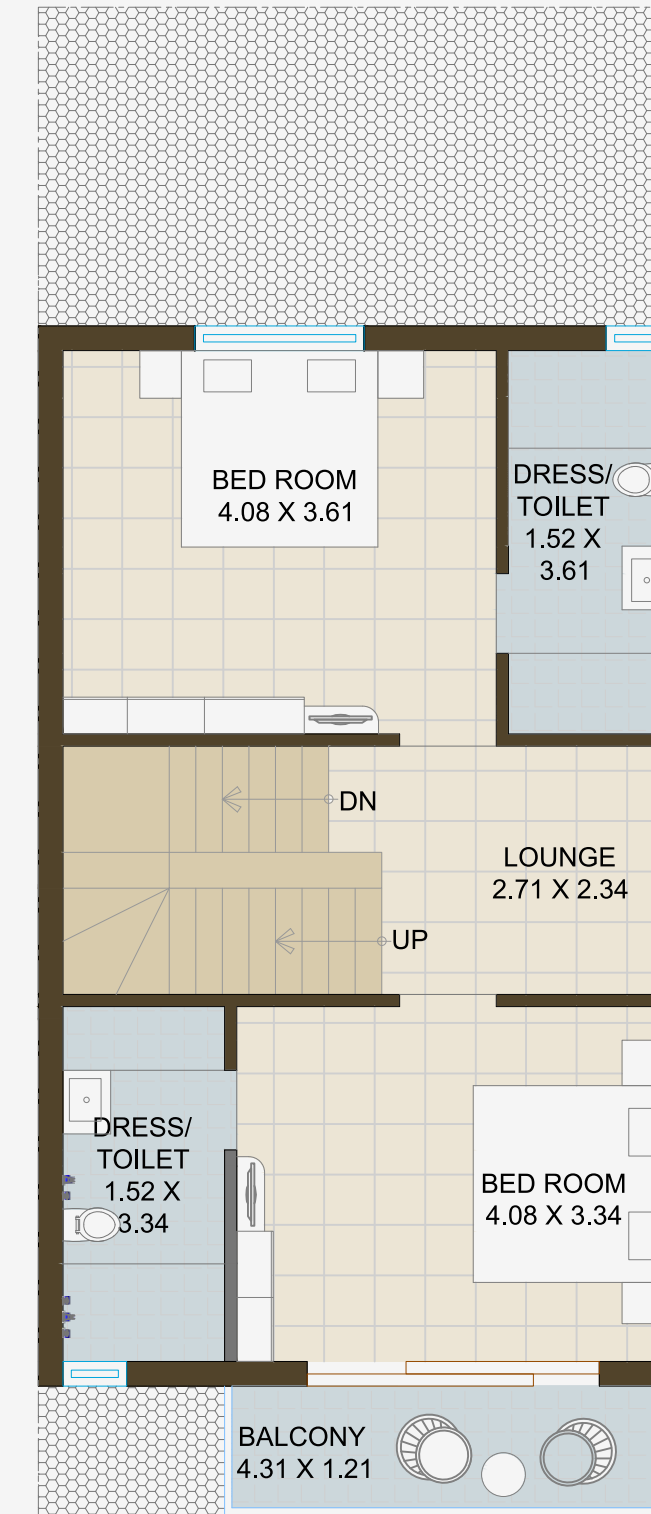


BUNGLOW NO.  
**01 & 43**

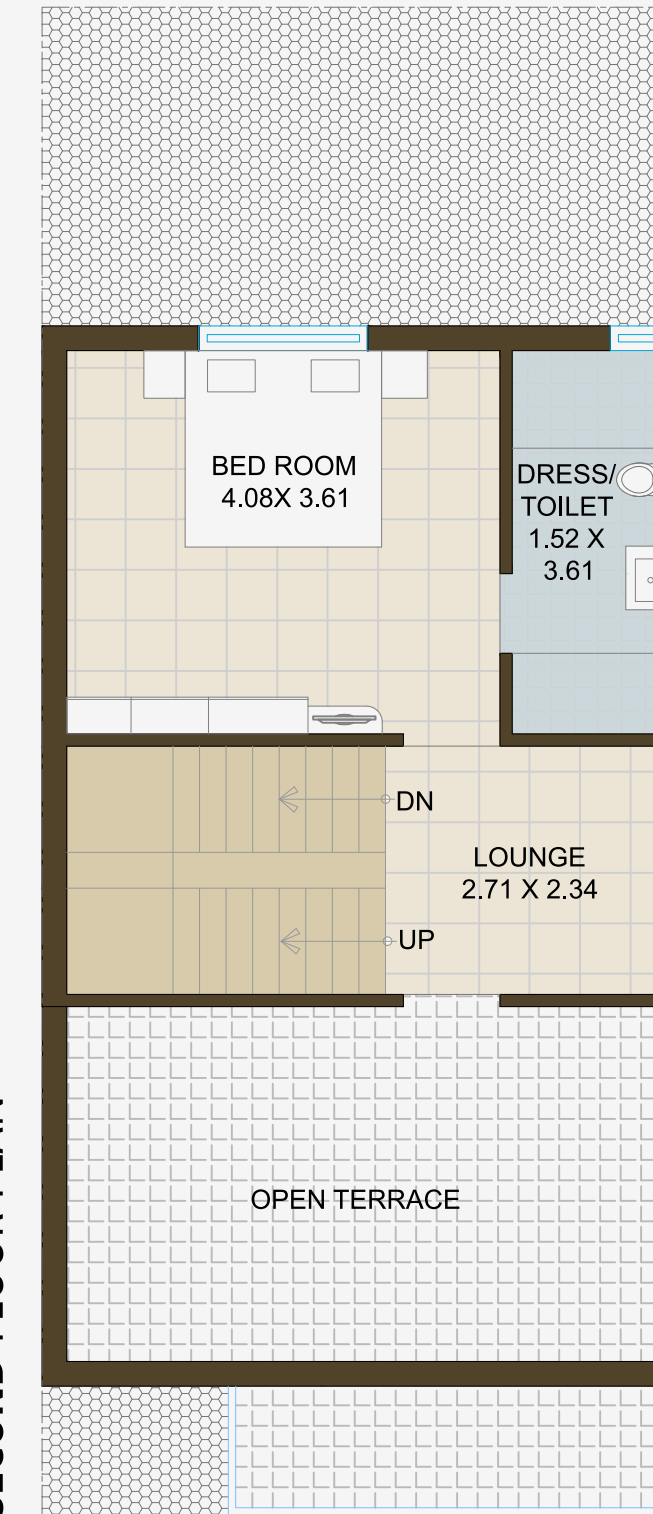
**GROUND FLOOR PLAN**



**FIRST FLOOR PLAN**

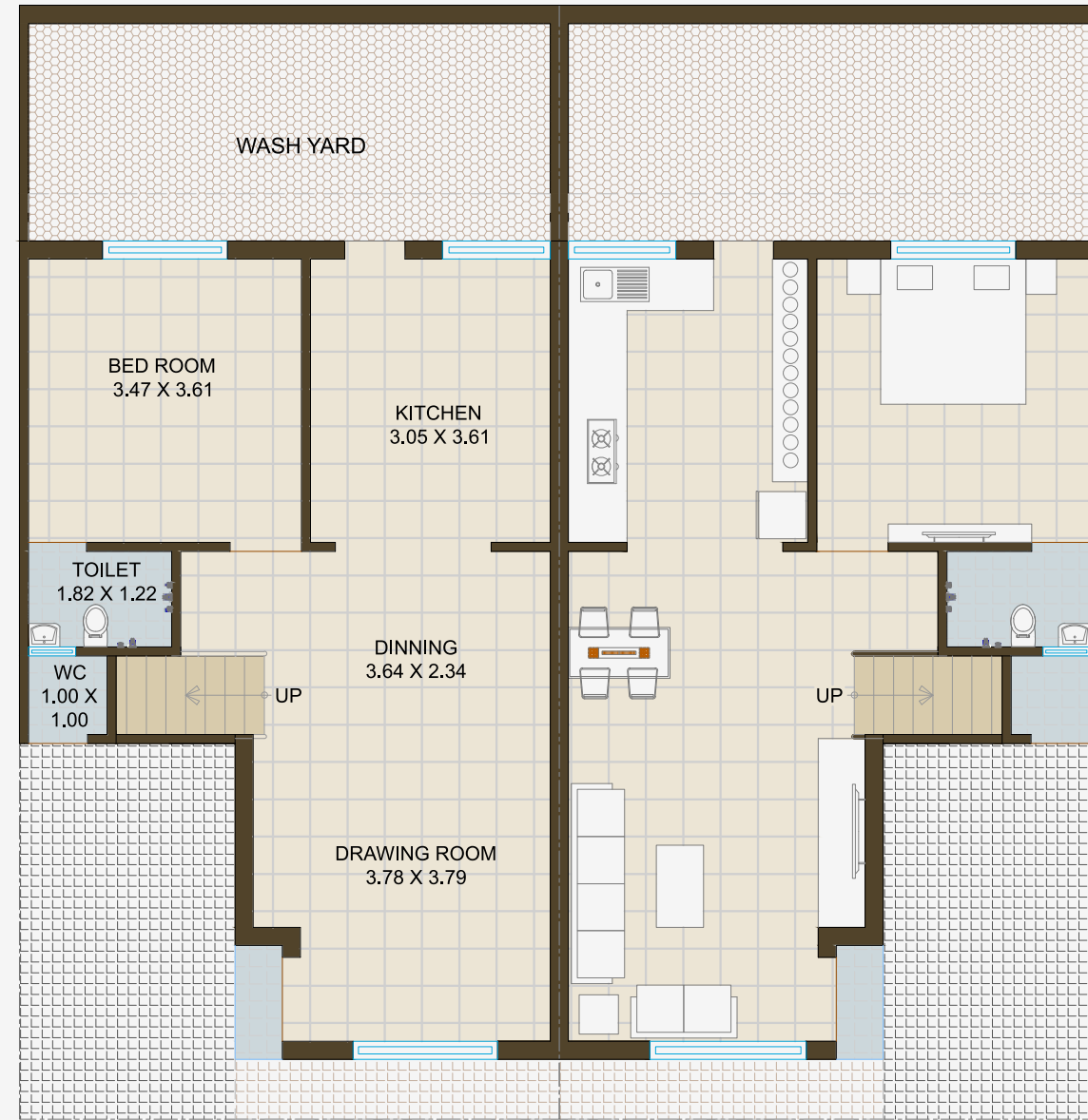


**SECOND FLOOR PLAN**

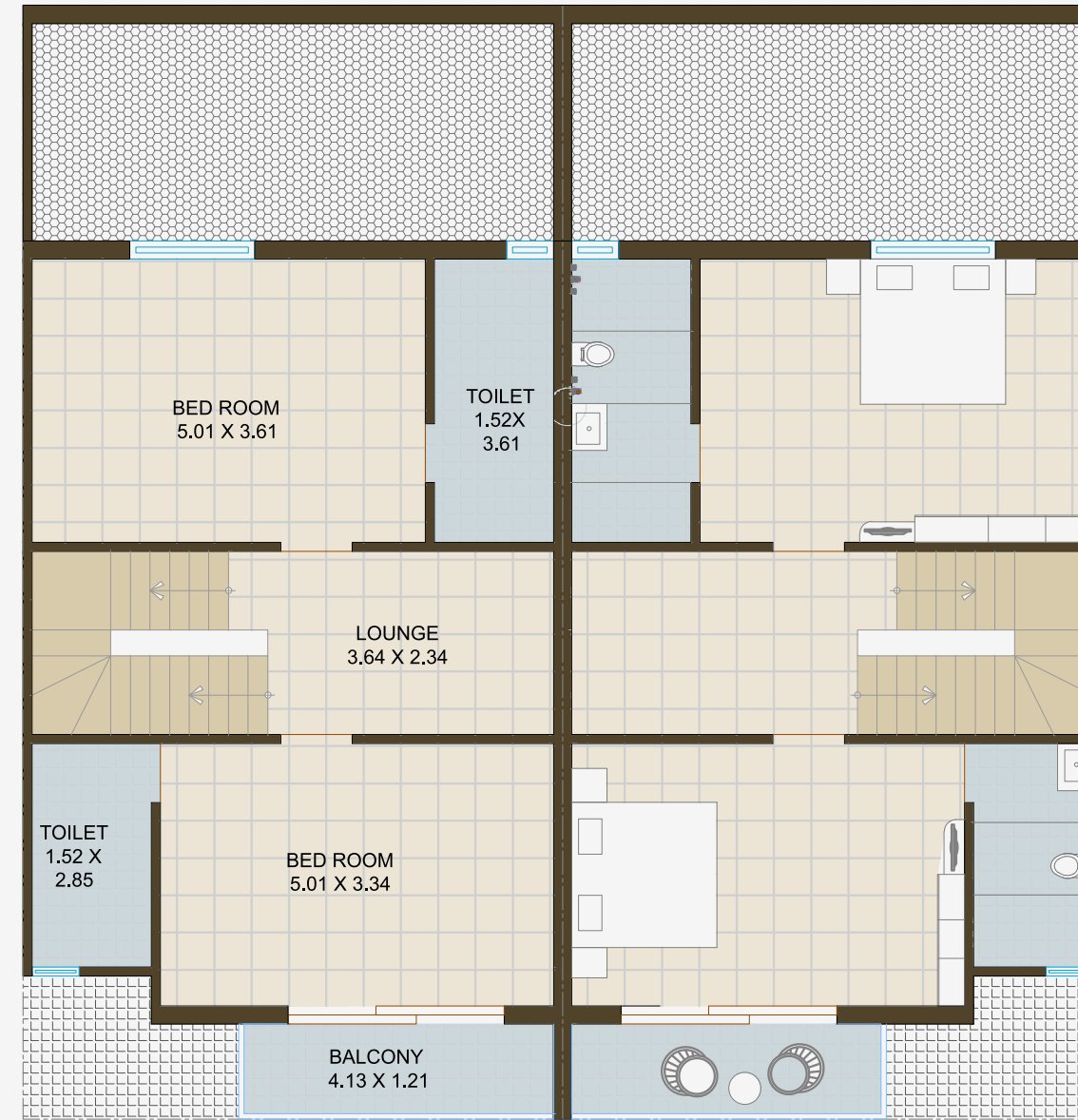




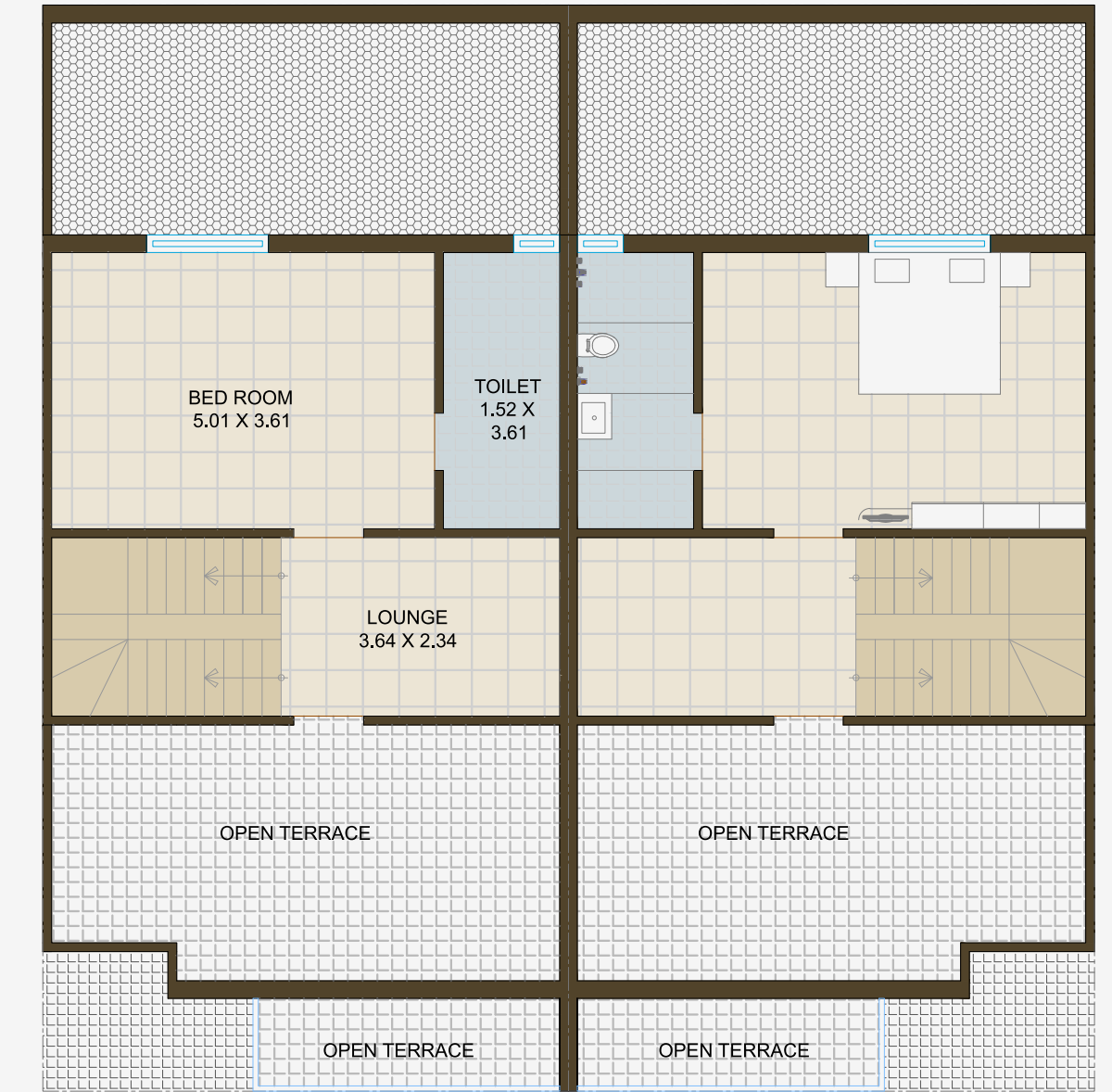
BUNGLOW NO.  
**02 TO 09**



**GROUND FLOOR PLAN**



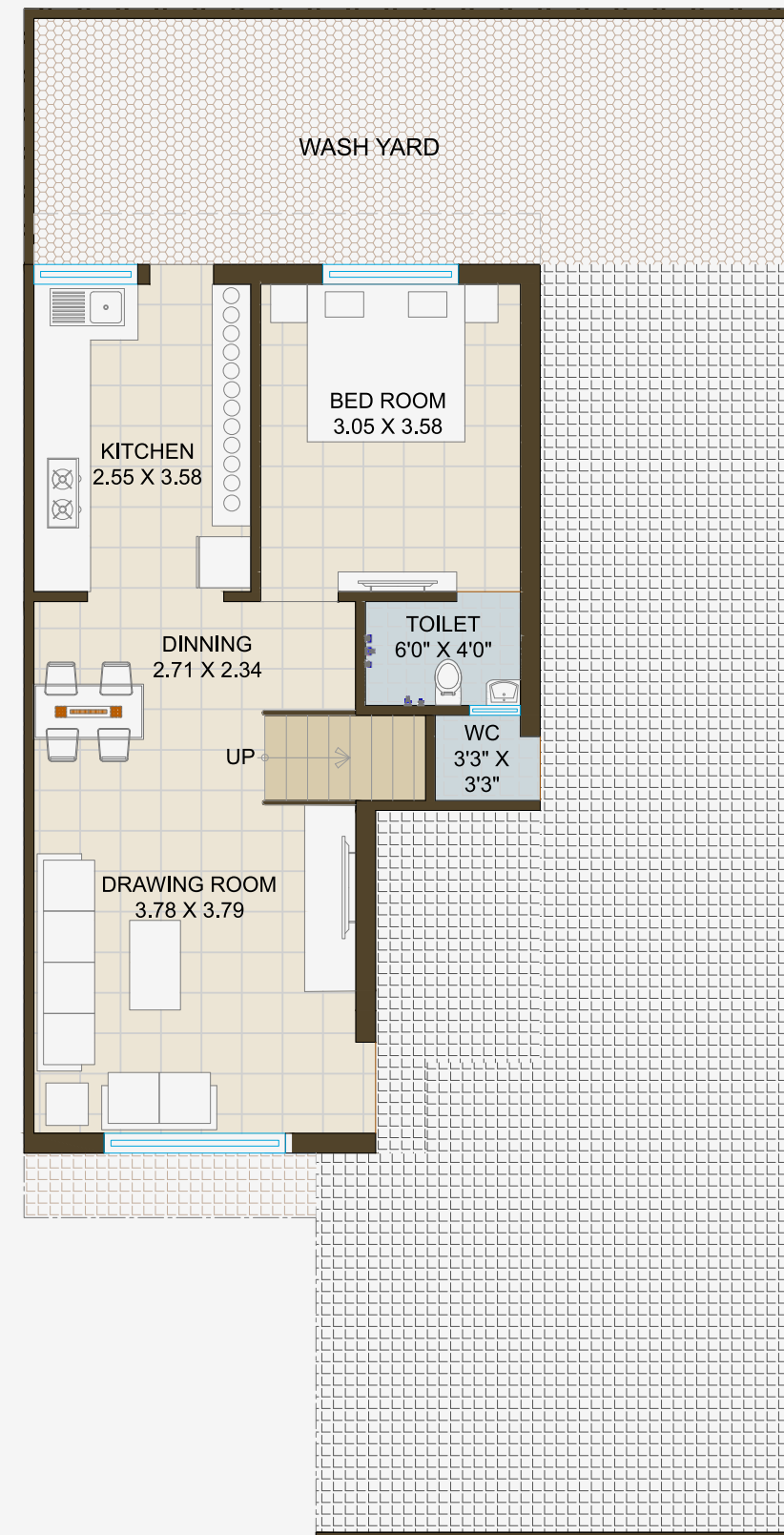
**FIRST FLOOR PLAN**



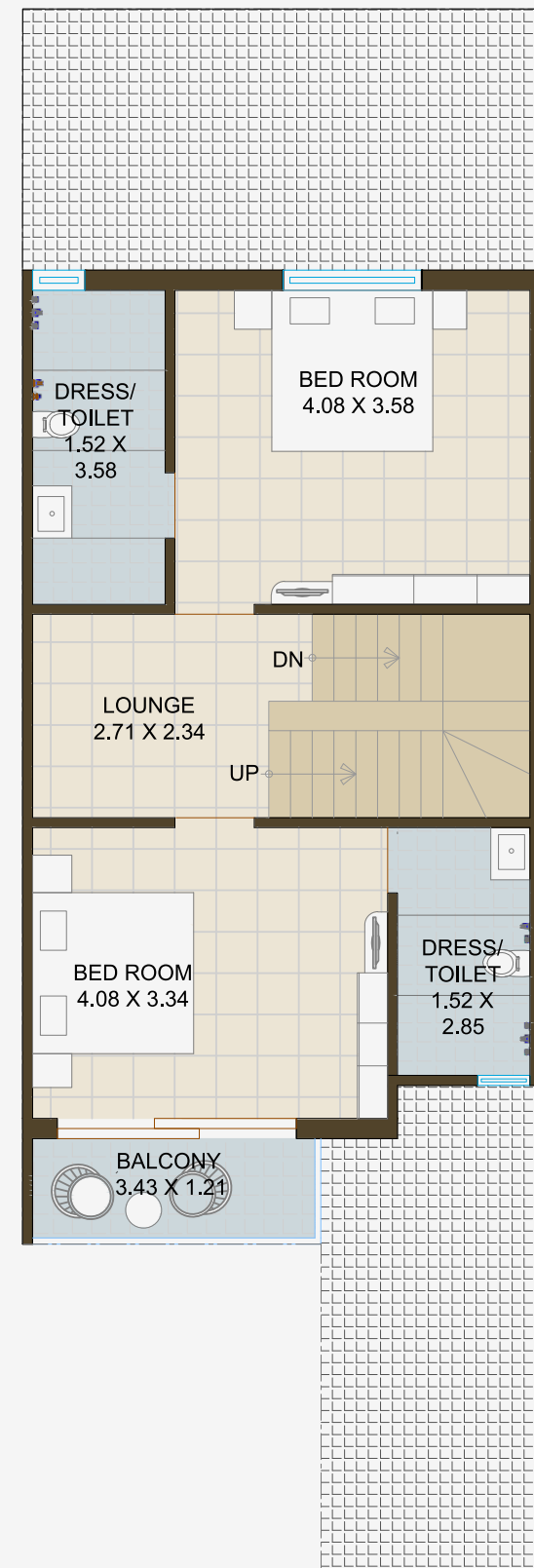
**SECOND FLOOR PLAN**



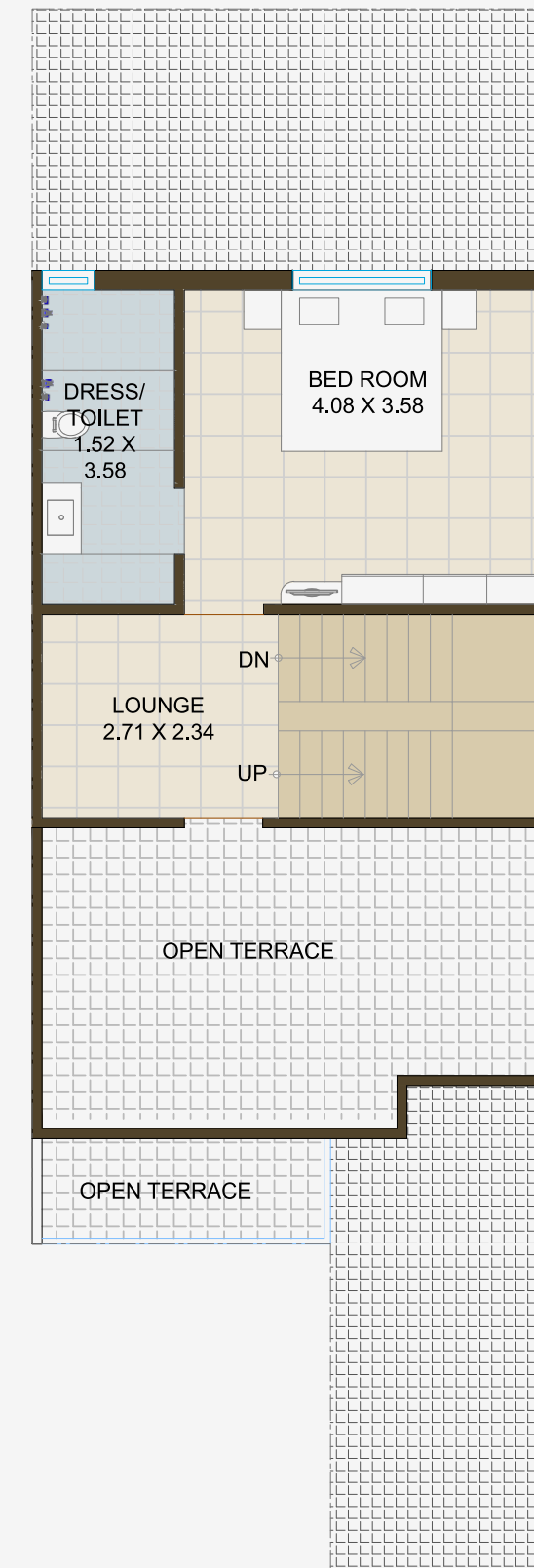
BUNGLOW NO.  
**10**



**GROUND FLOOR PLAN**



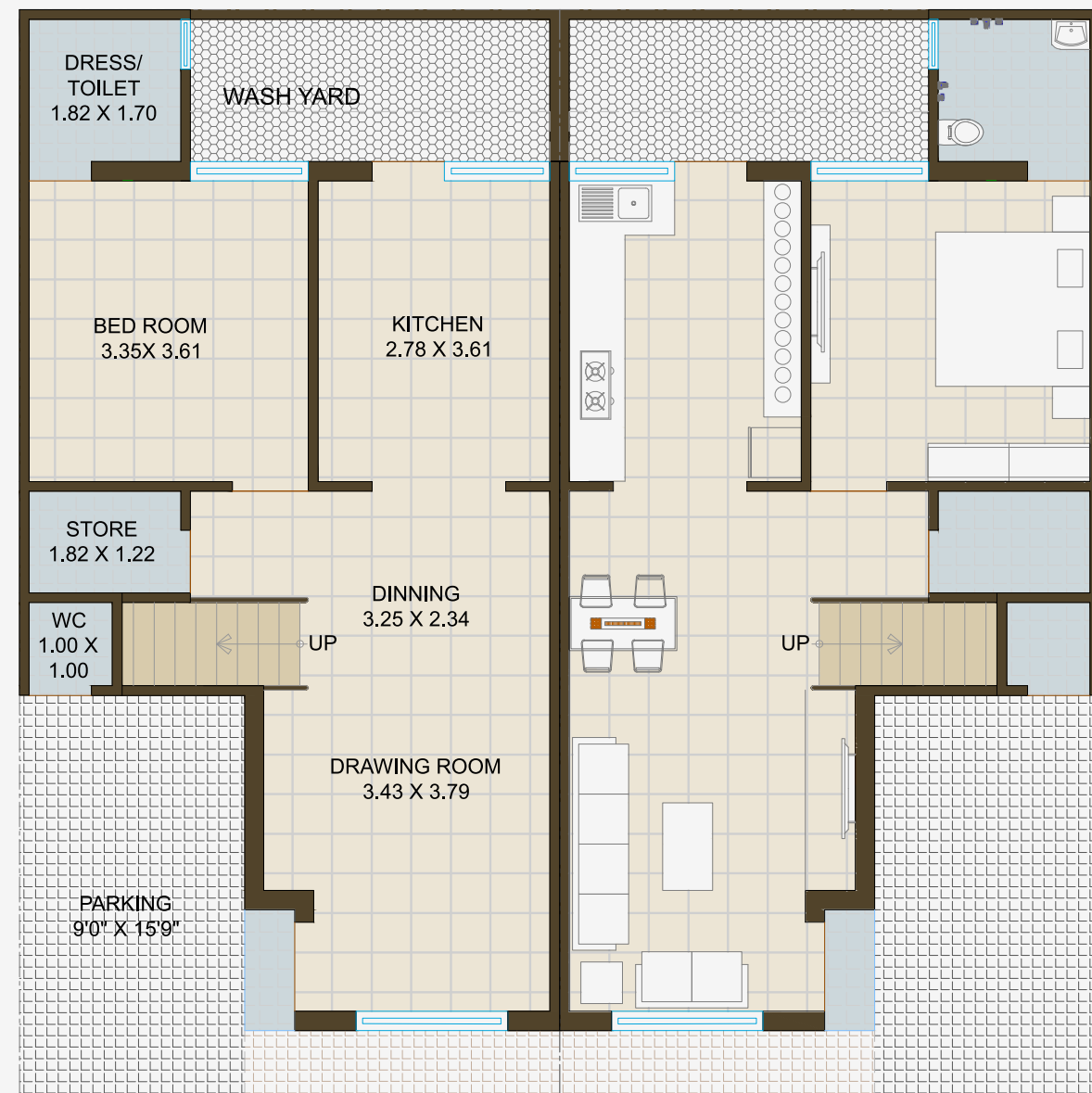
**FIRST FLOOR PLAN**



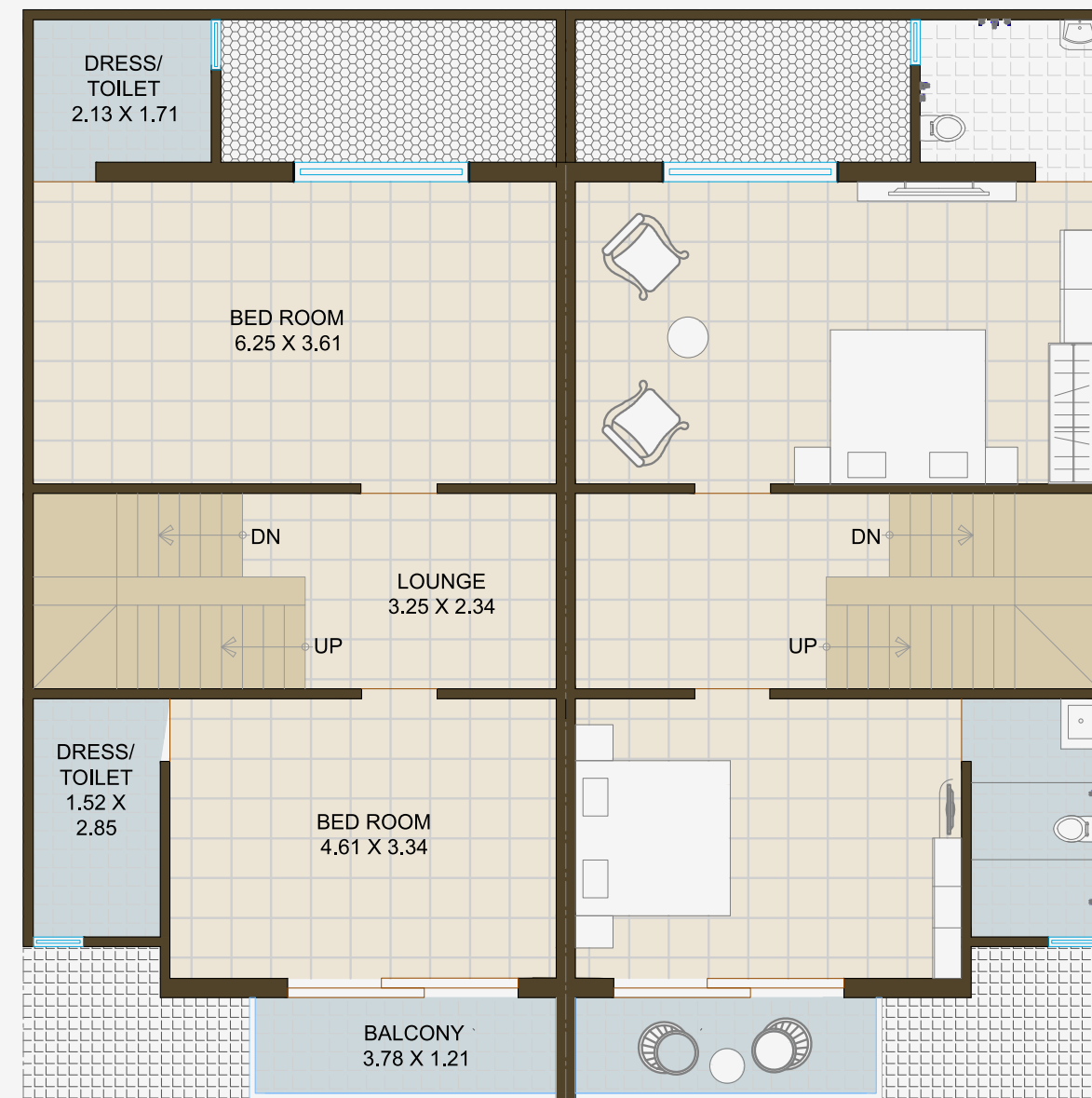
**SECOND FLOOR PLAN**



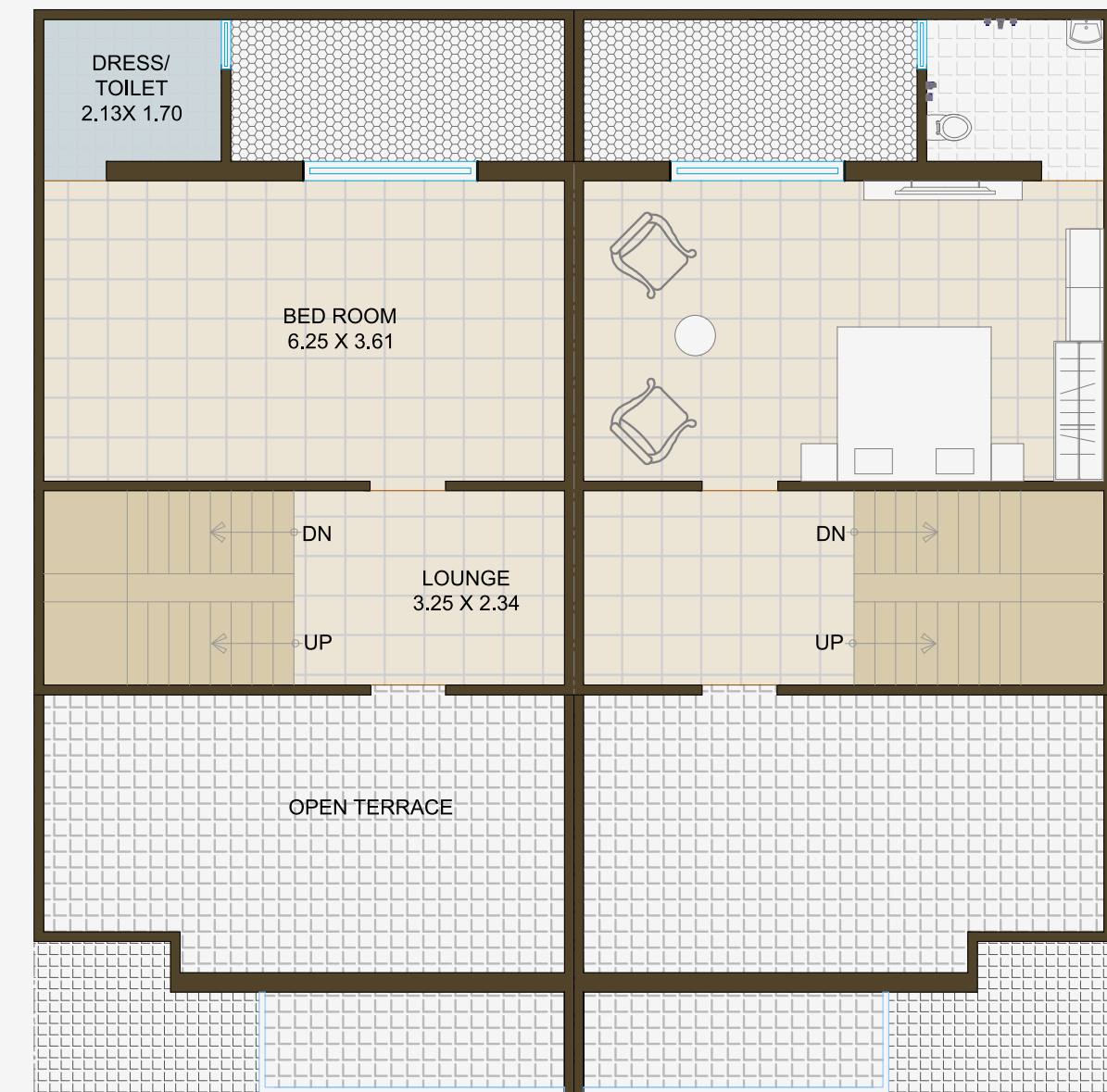
BUNGLOW NO.  
**12 TO 14 & 29 TO 31**



**GROUND FLOOR PLAN**



**FIRST FLOOR PLAN**



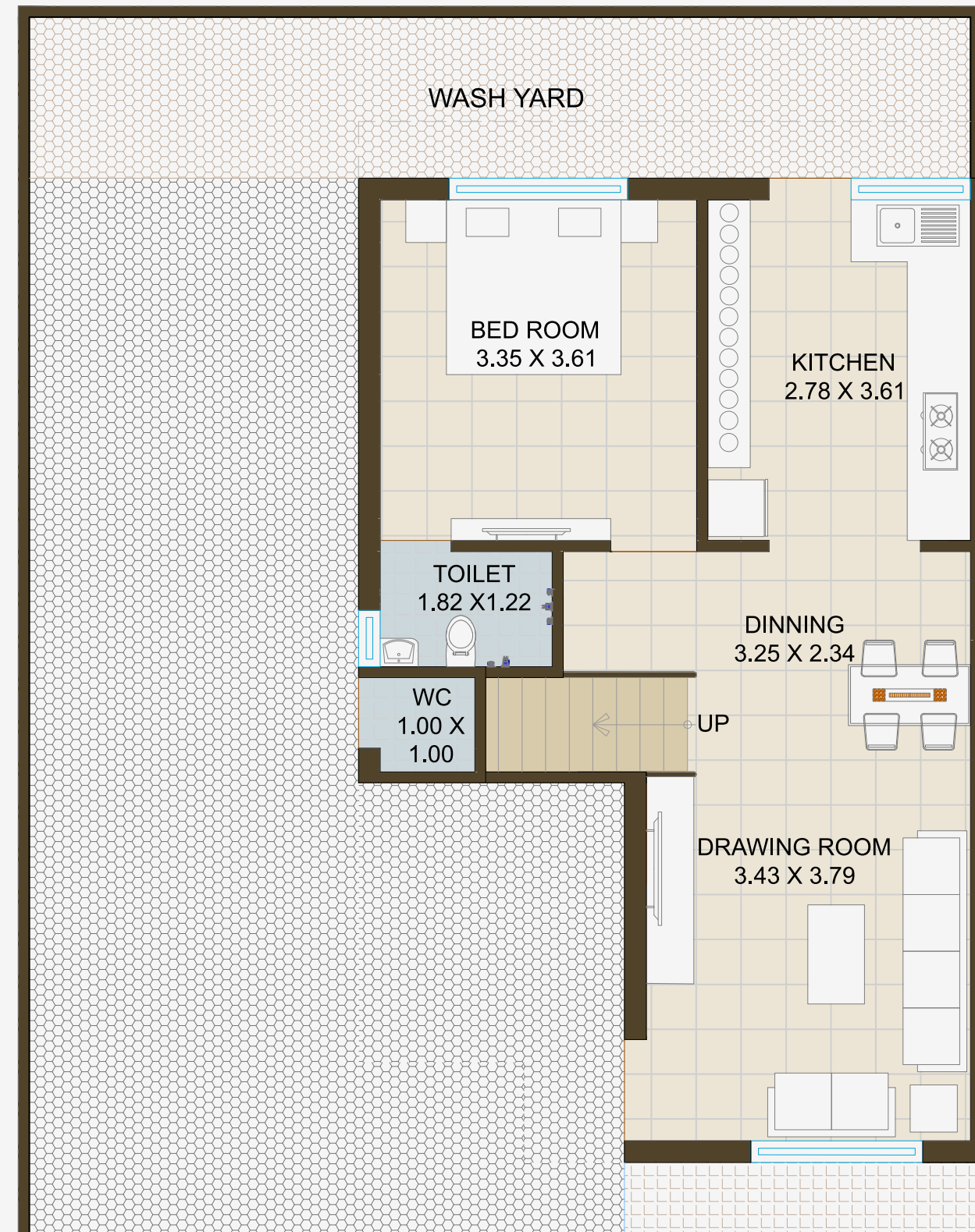
**SECOND FLOOR PLAN**



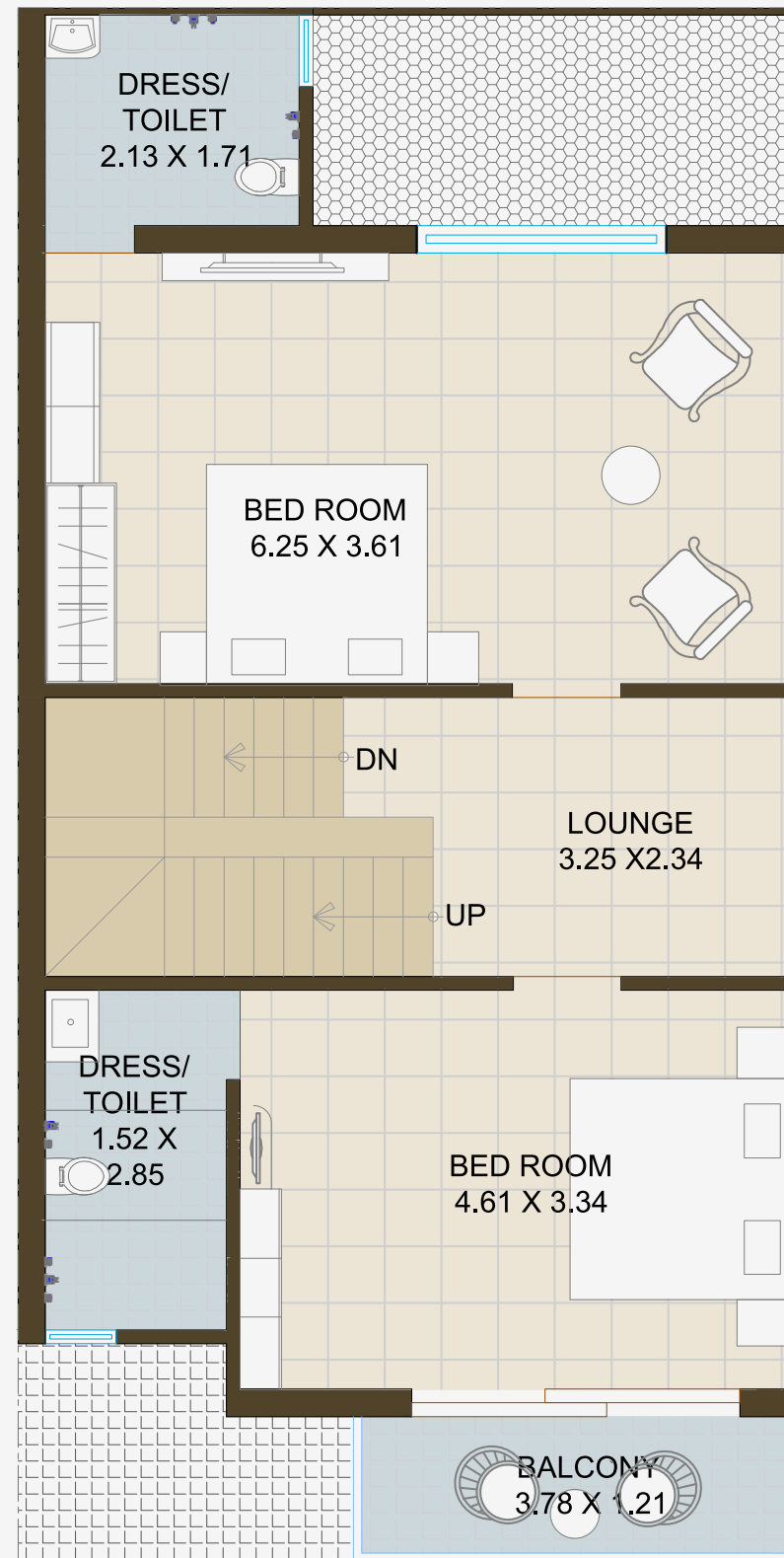


BUNGLOW NO.  
**15 & 28**

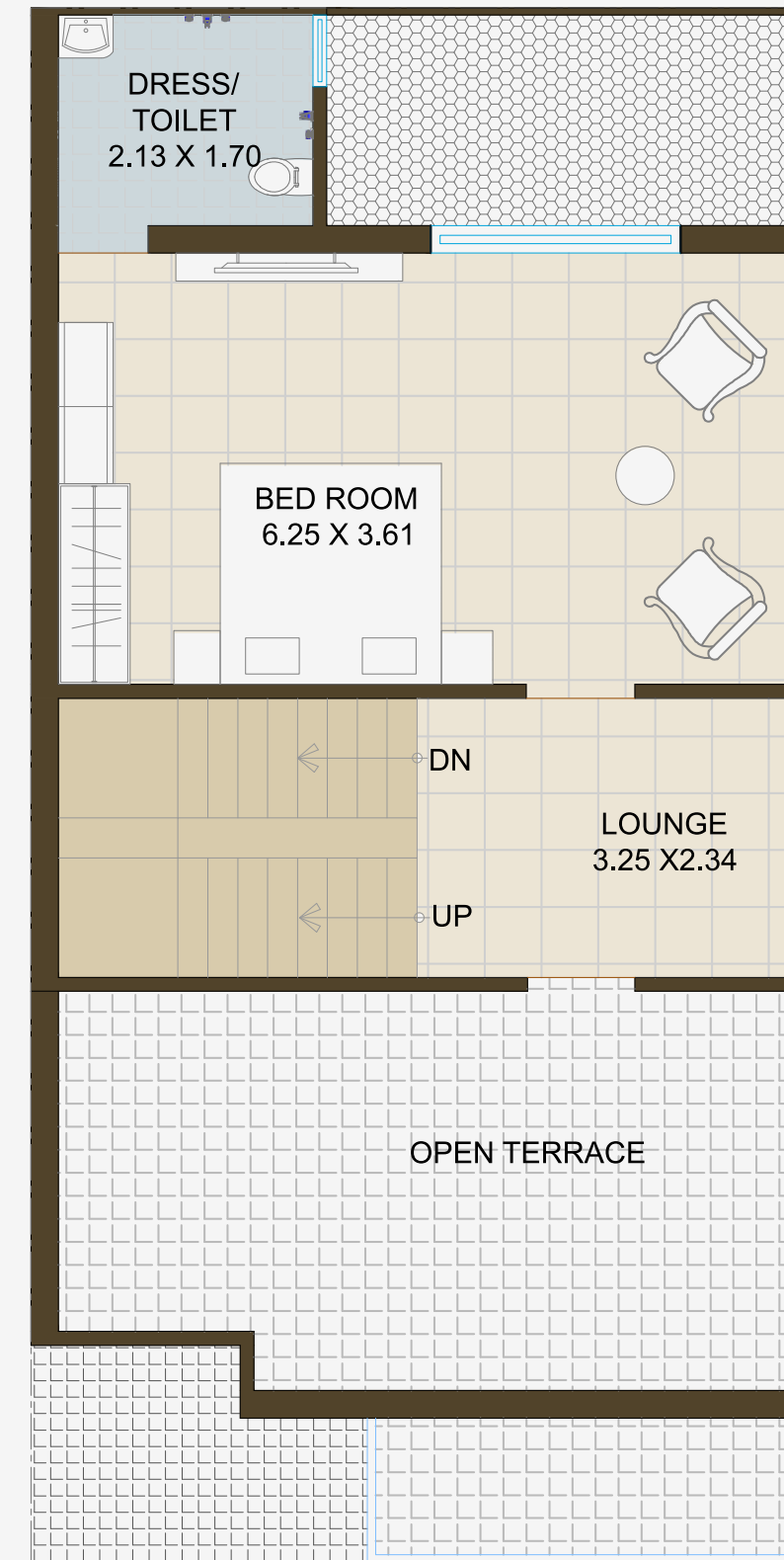
**GROUND FLOOR PLAN**



**FIRST FLOOR PLAN**



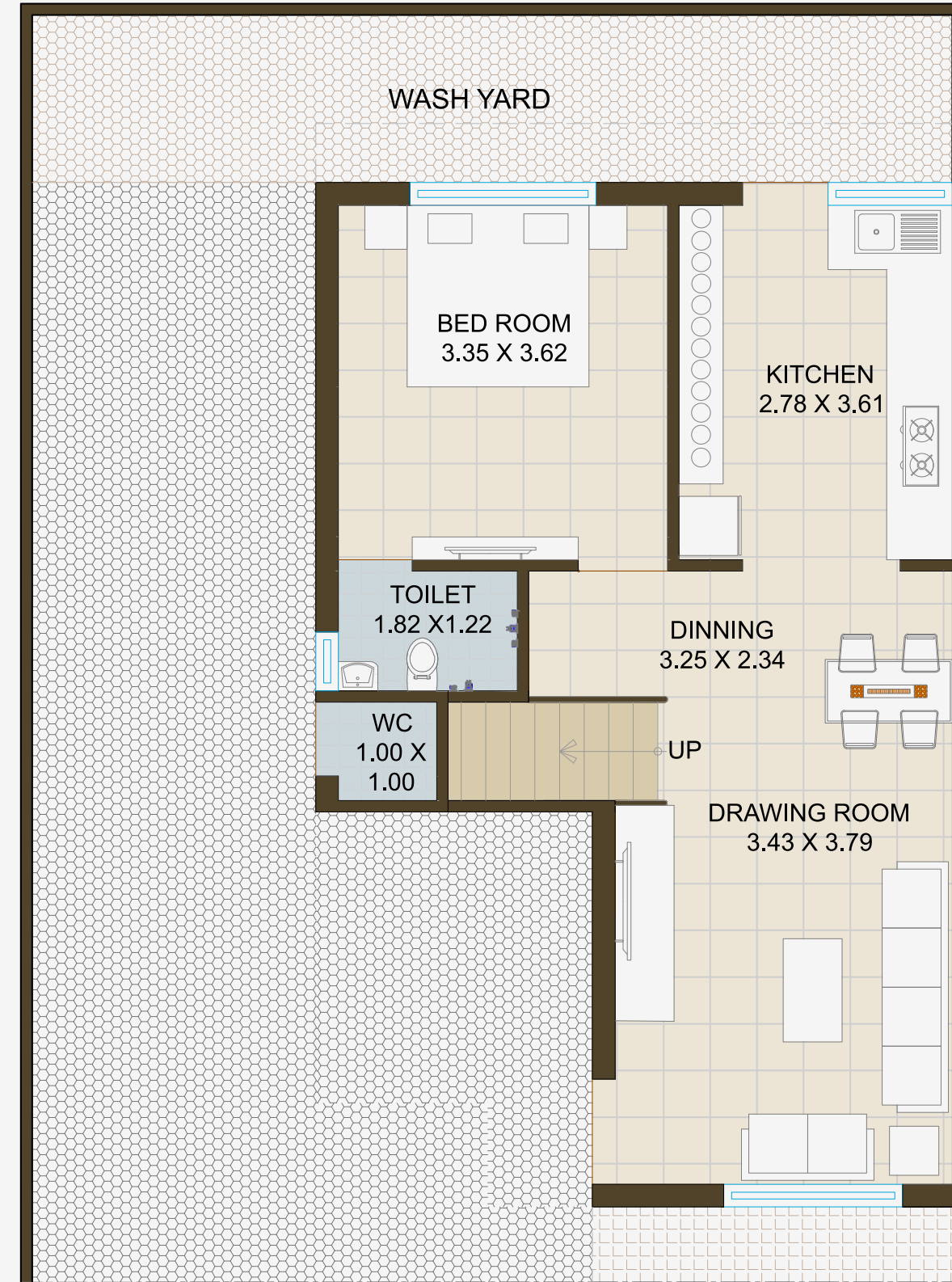
**SECOND FLOOR PLAN**



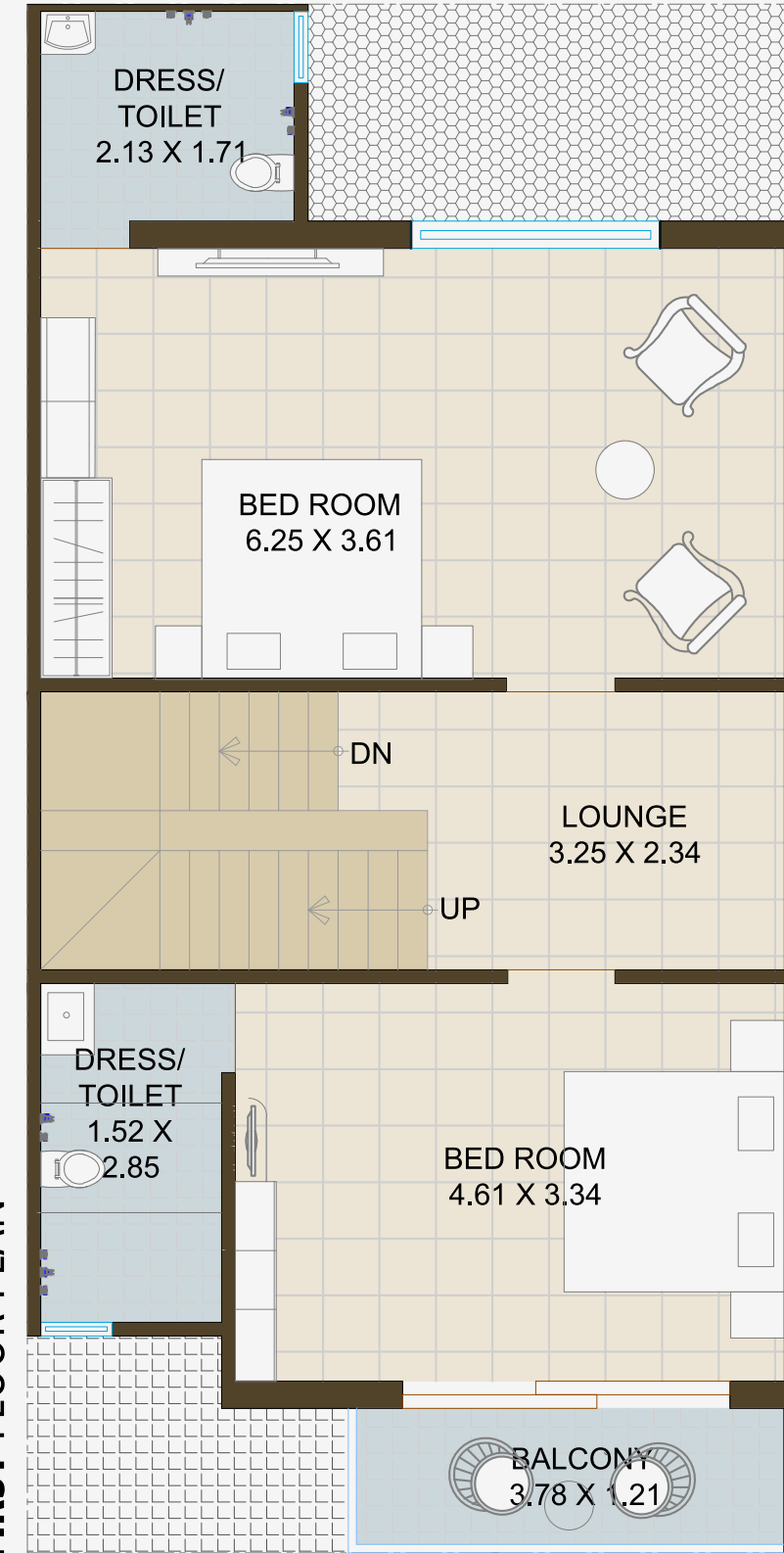


BUNGLOW NO.  
**11 & 32**

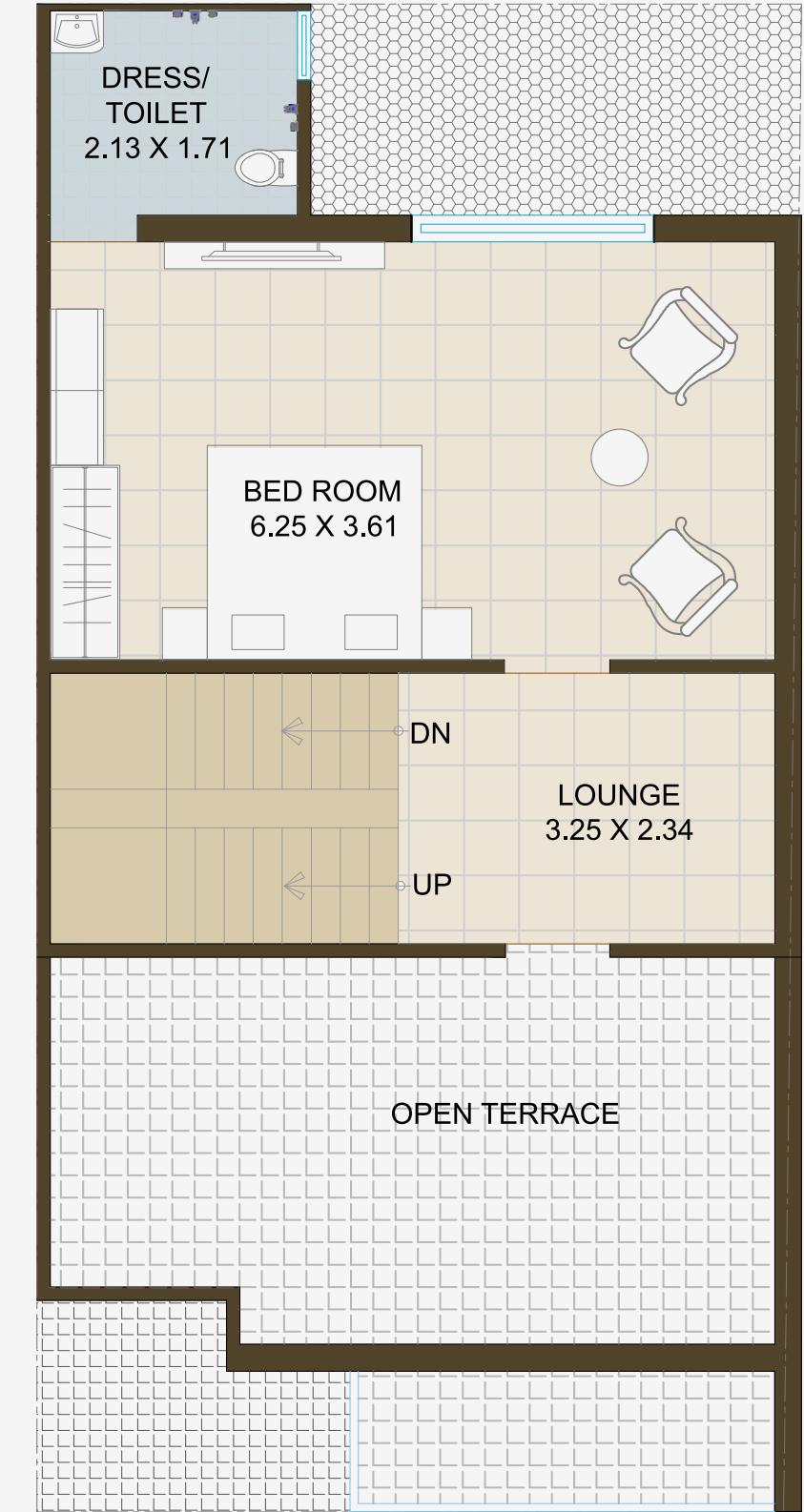
**GROUND FLOOR PLAN**



**FIRST FLOOR PLAN**

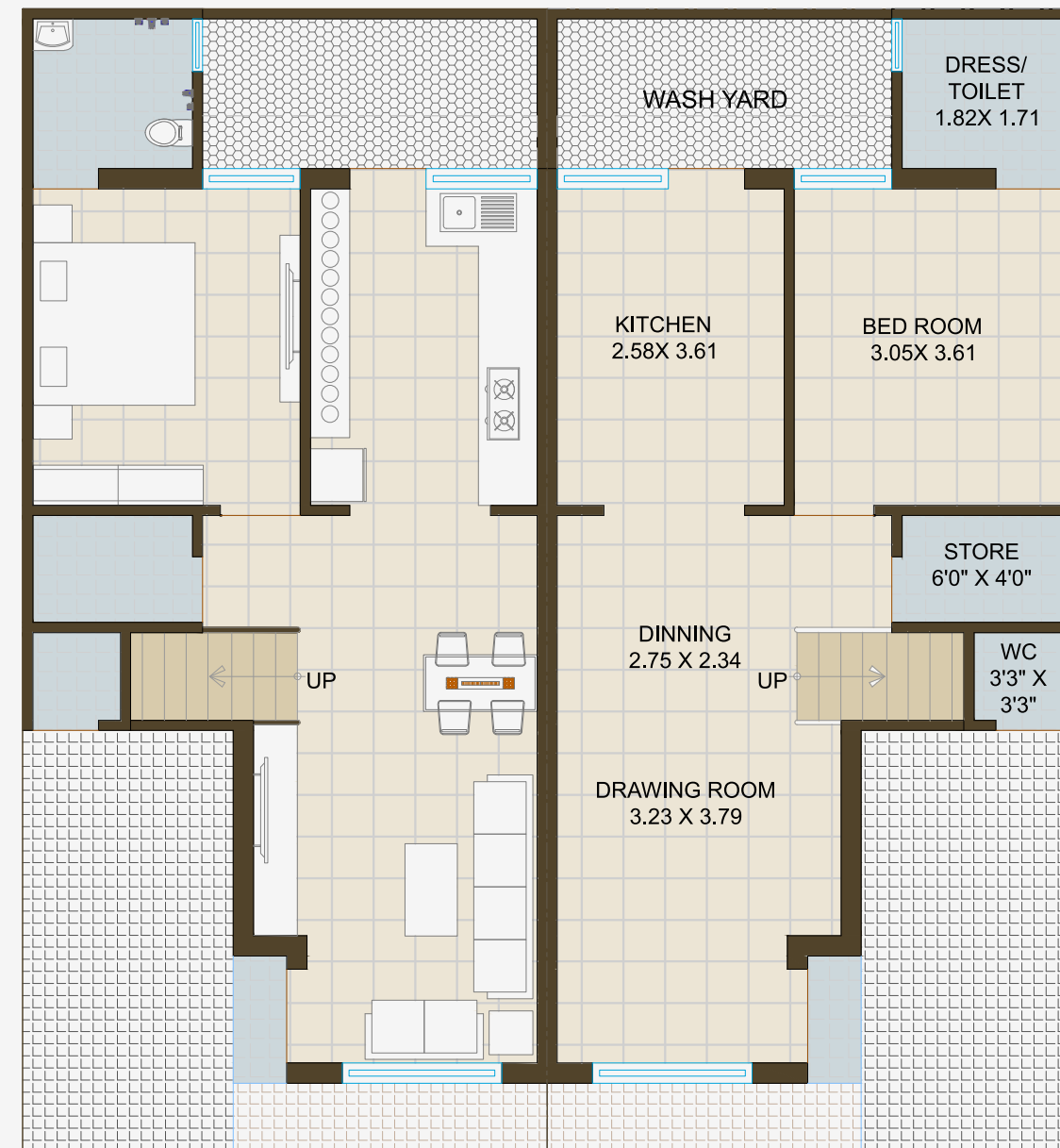


**SECOND FLOOR PLAN**

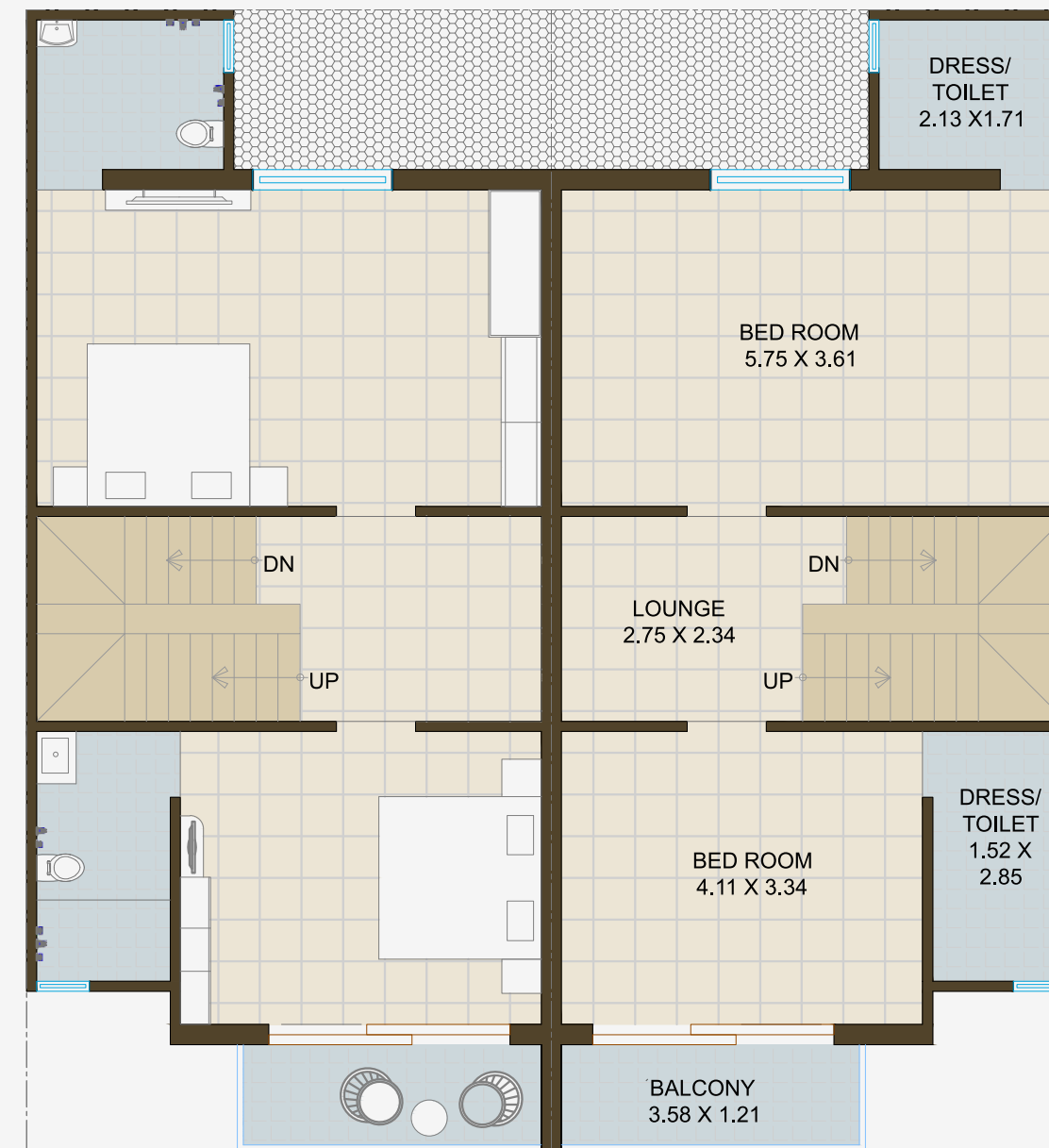




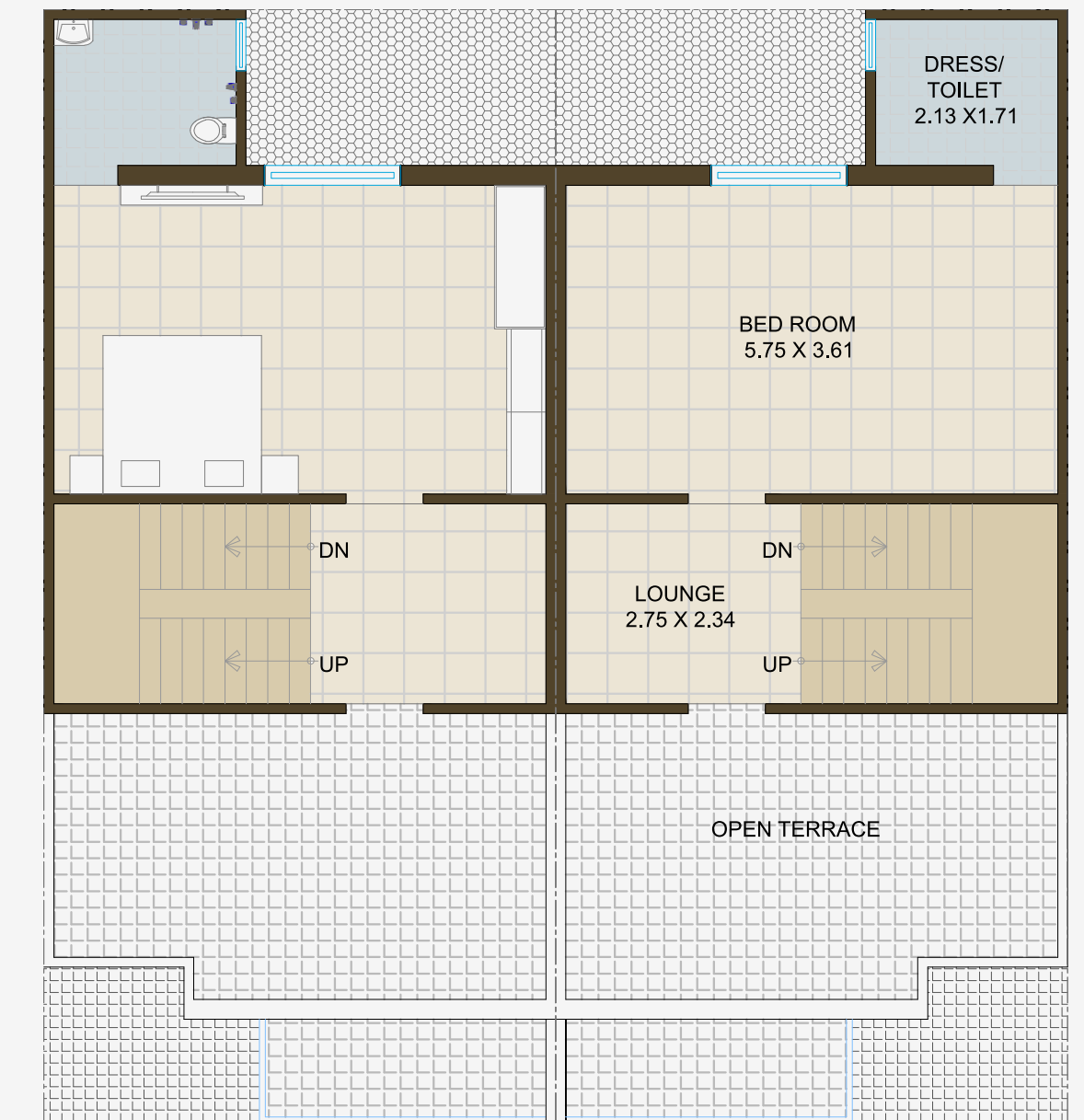
BUNGLOW NO.  
**17 TO 20 & 23 TO 26**



**GROUND FLOOR PLAN**



**FIRST FLOOR PLAN**

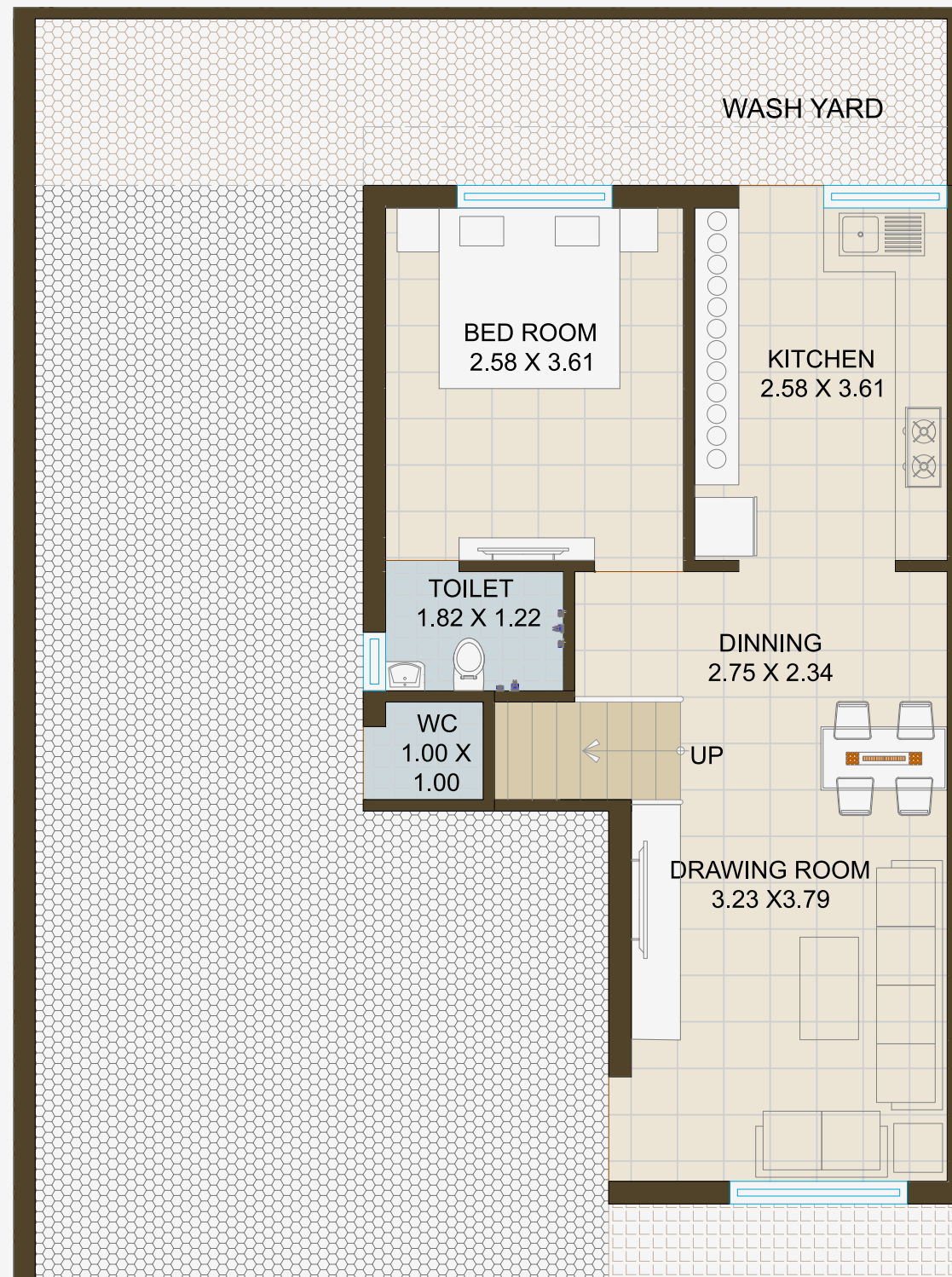


**SECOND FLOOR PLAN**

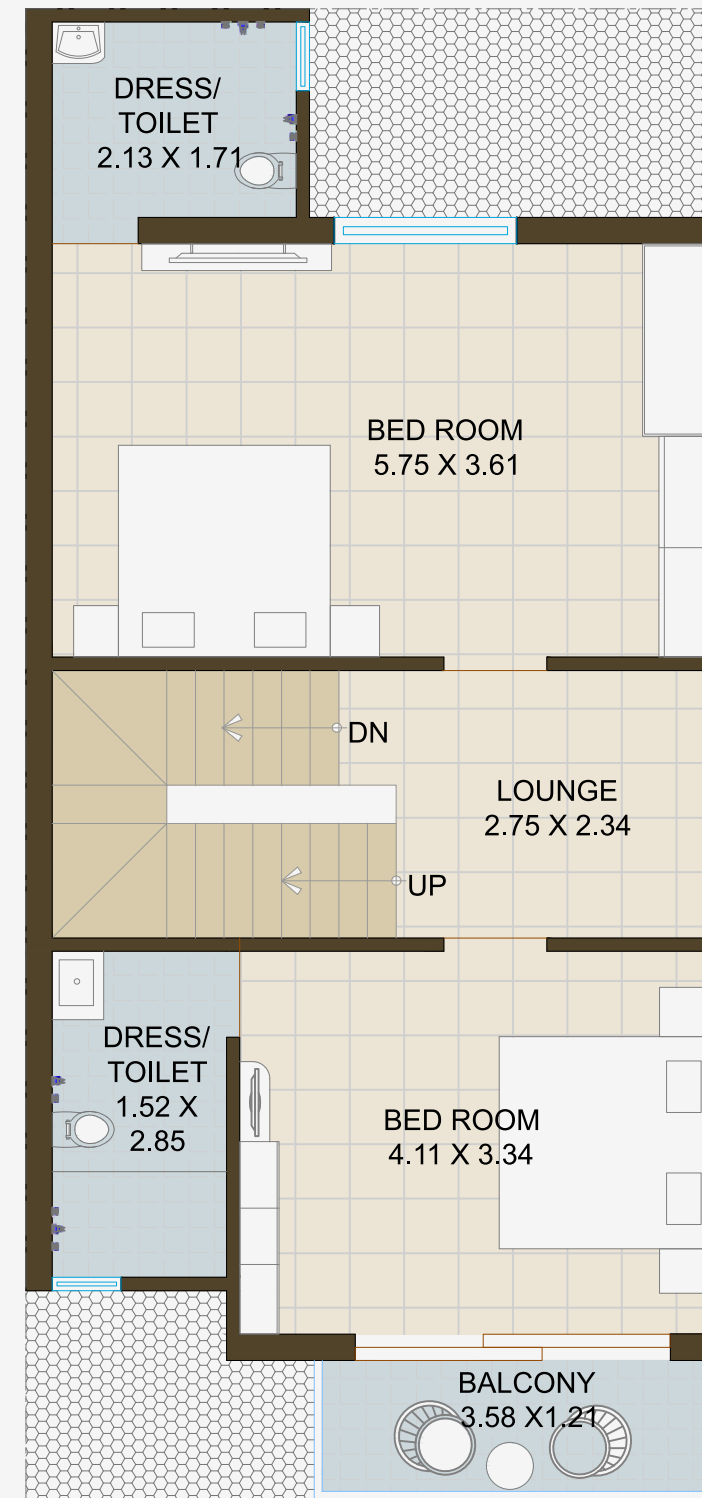


BUNGLOW NO.  
**27**

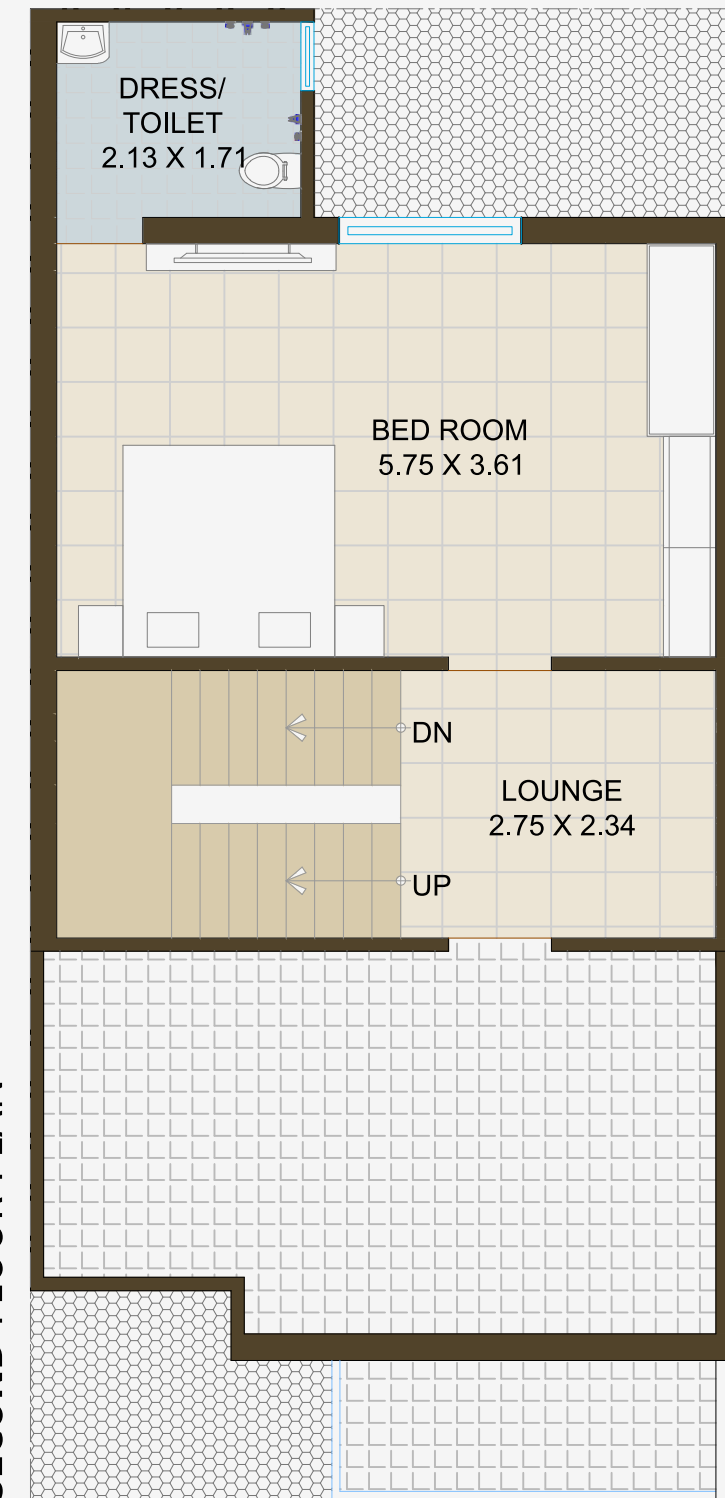
GROUND FLOOR PLAN



FIRST FLOOR PLAN



SECOND FLOOR PLAN

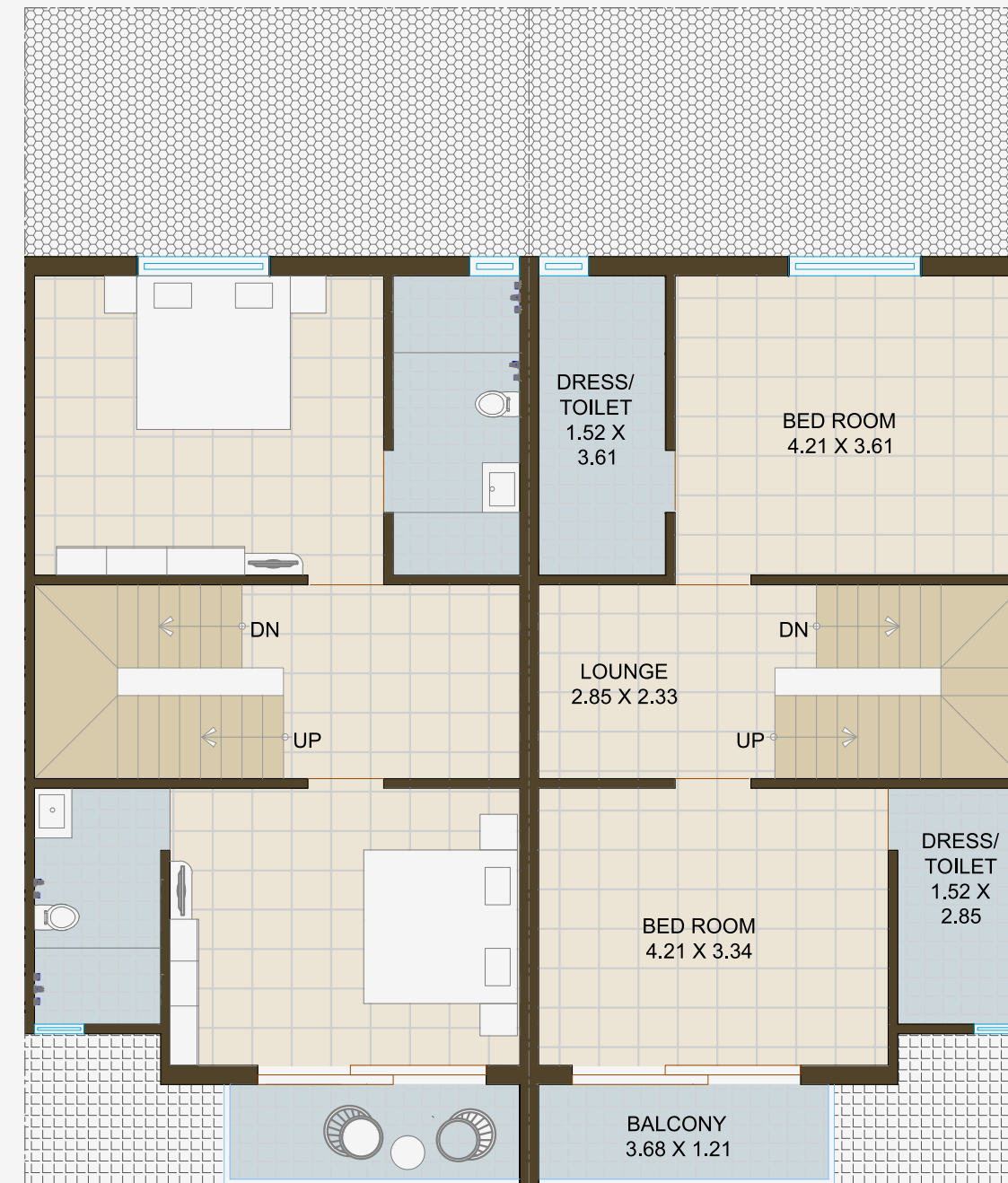




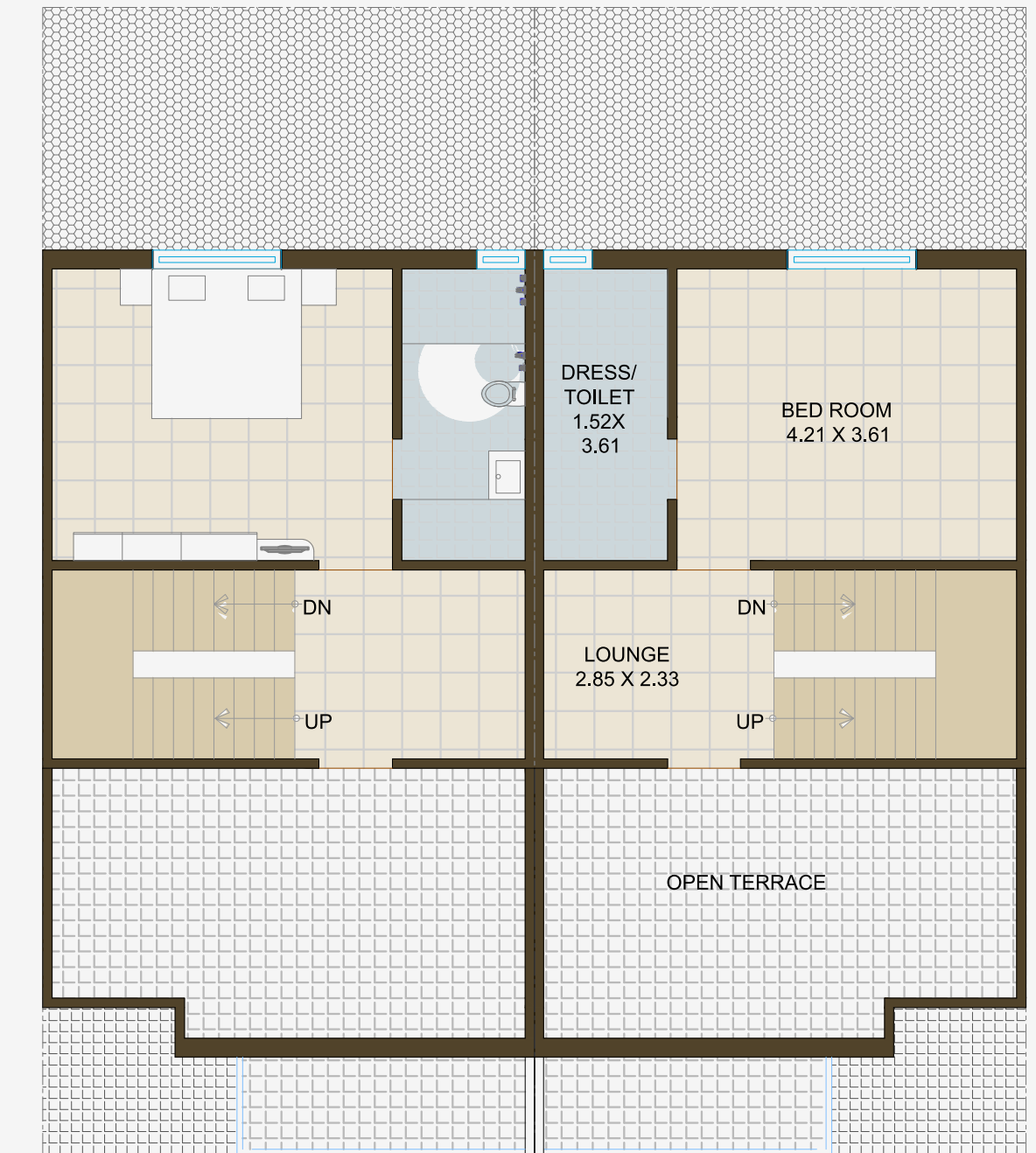
BUNGLOW NO.  
**34 TO 36 & 39 TO 42**



**GROUND FLOOR PLAN**



**FIRST FLOOR PLAN**



**SECOND FLOOR PLAN**

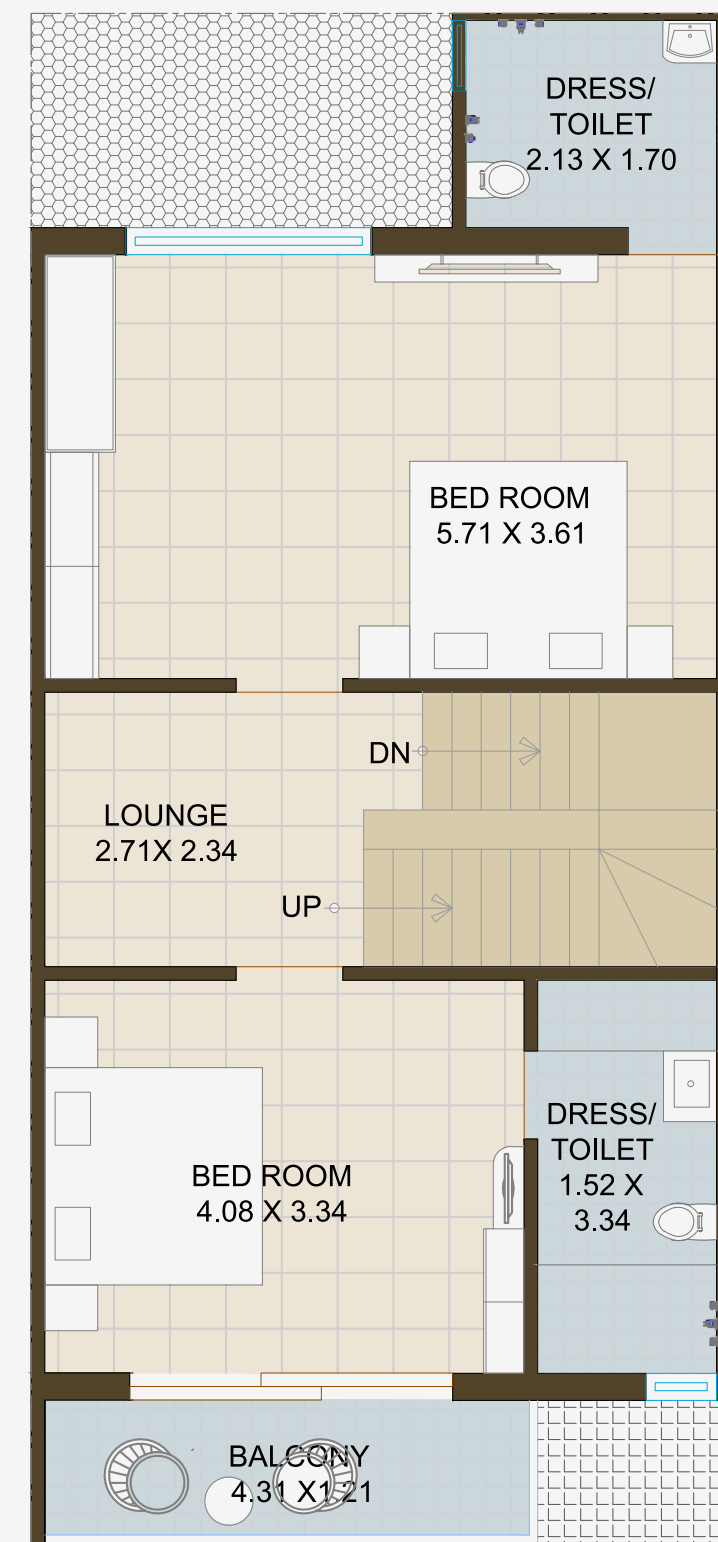


BUNGLOW NO.  
**21 & 22**

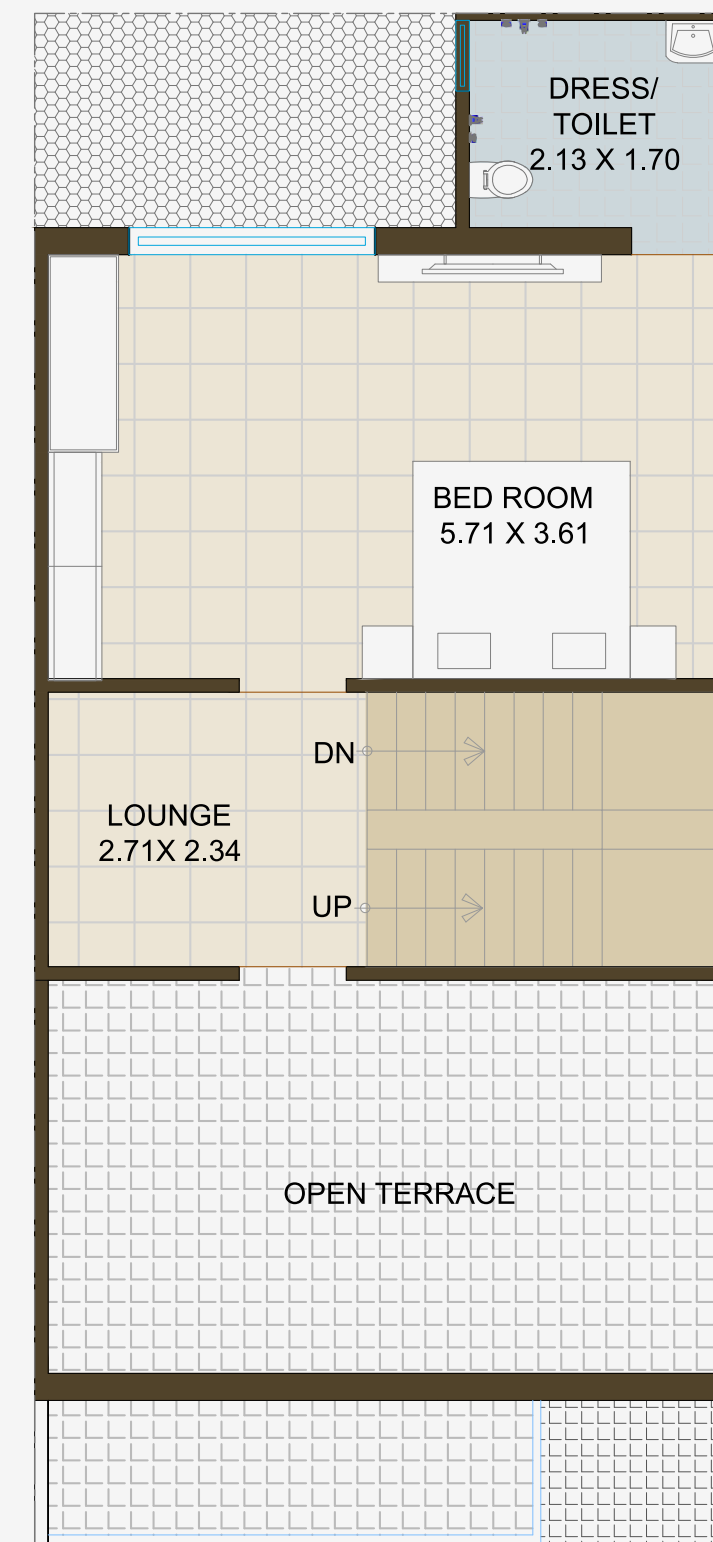
**GROUND FLOOR PLAN**



**FIRST FLOOR PLAN**

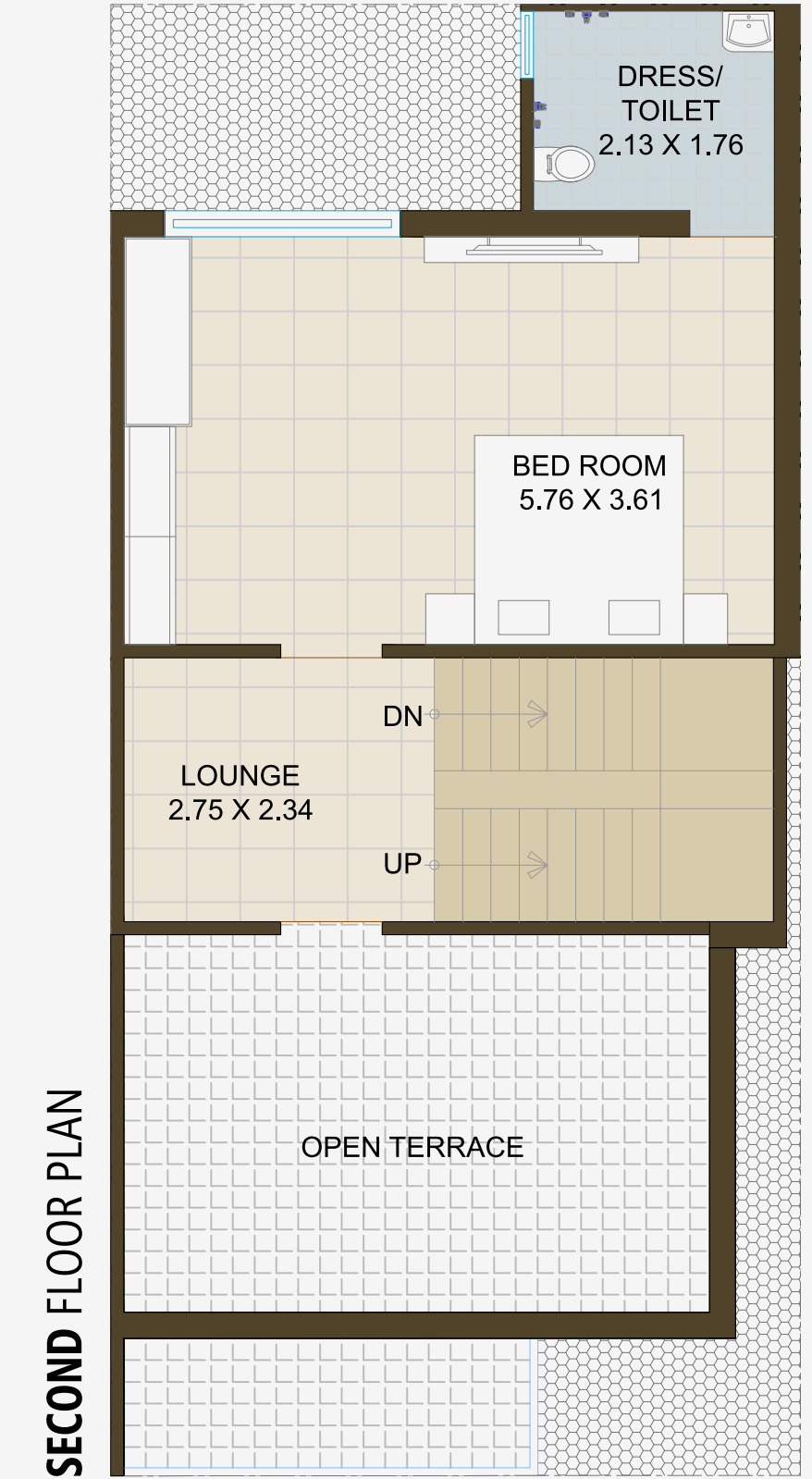
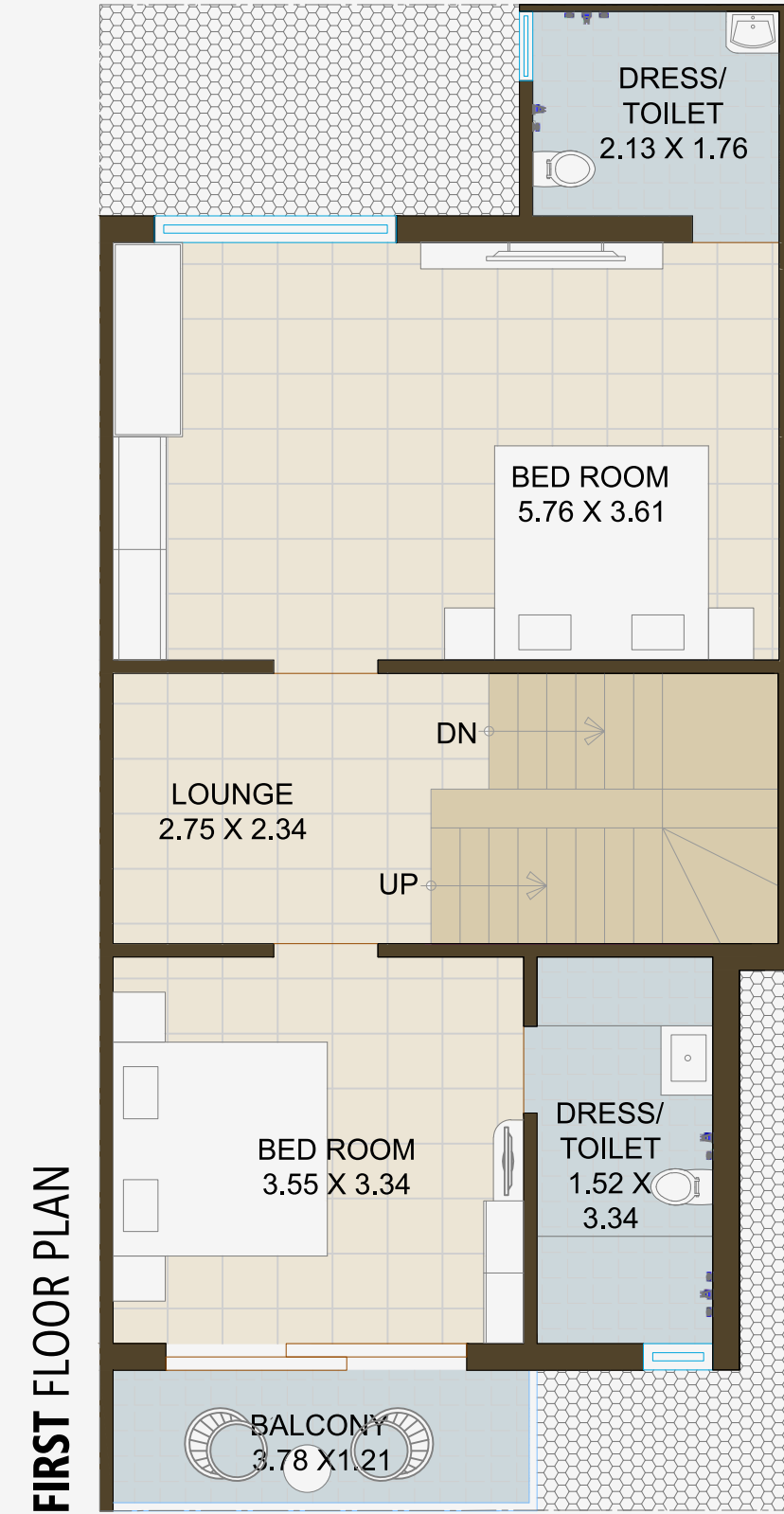
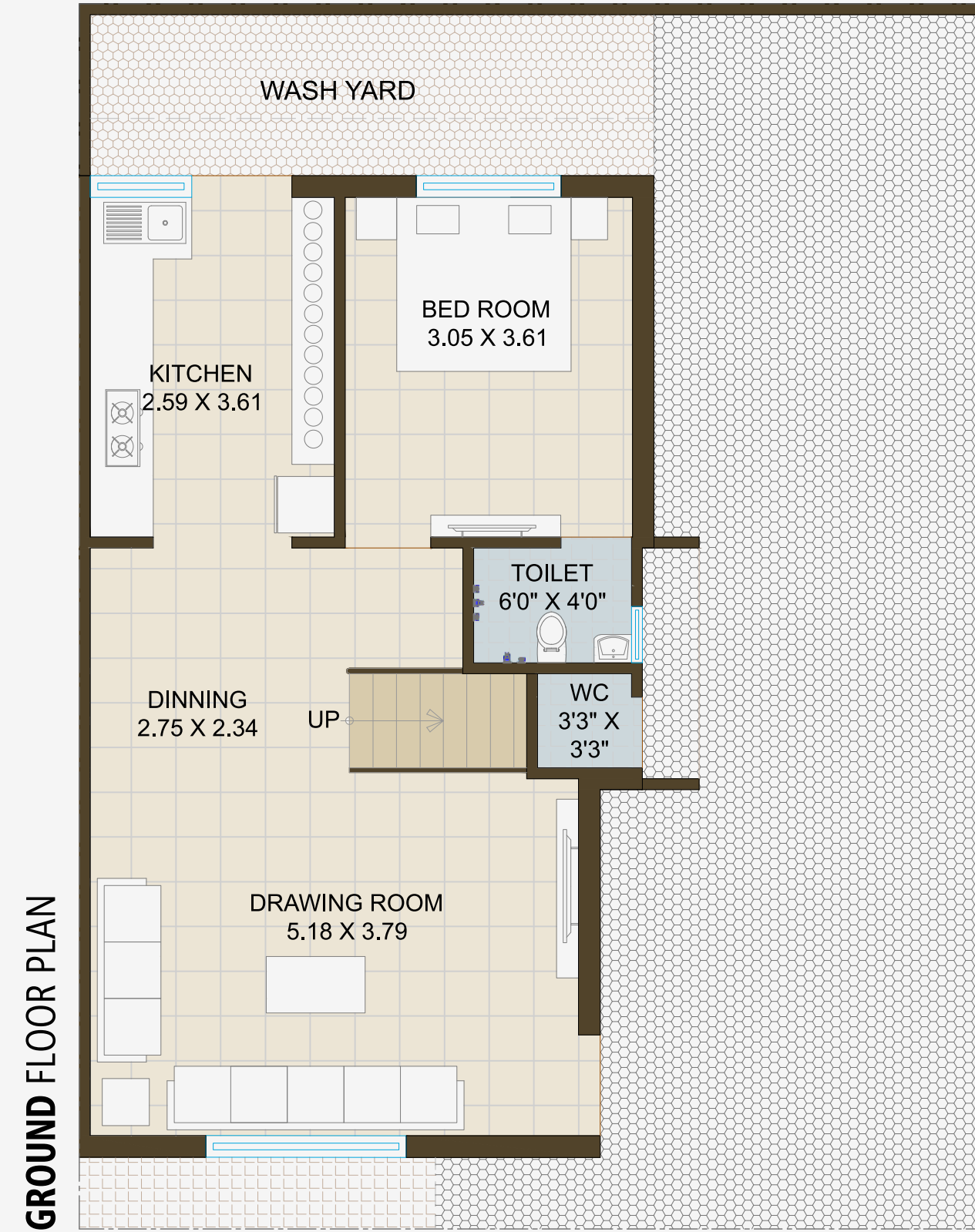


**SECOND FLOOR PLAN**



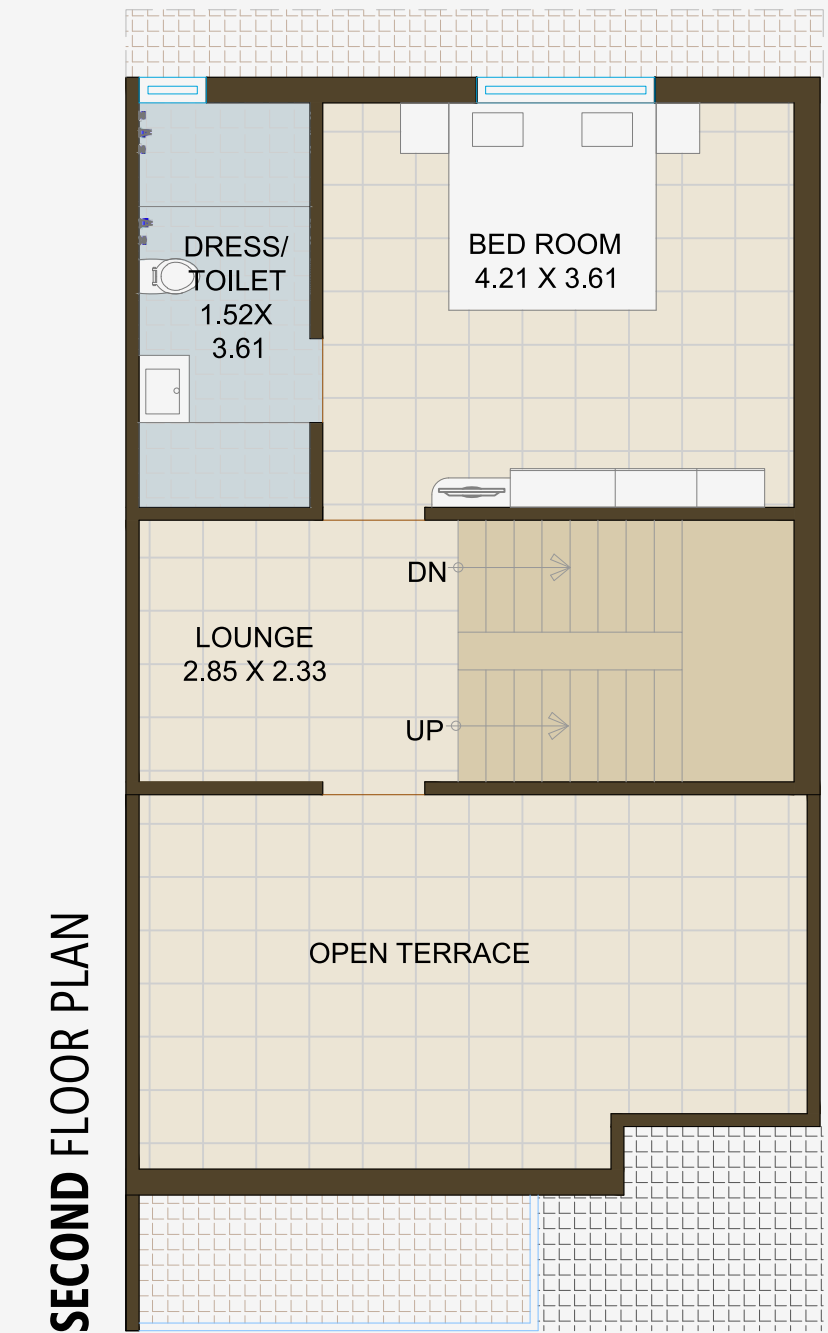
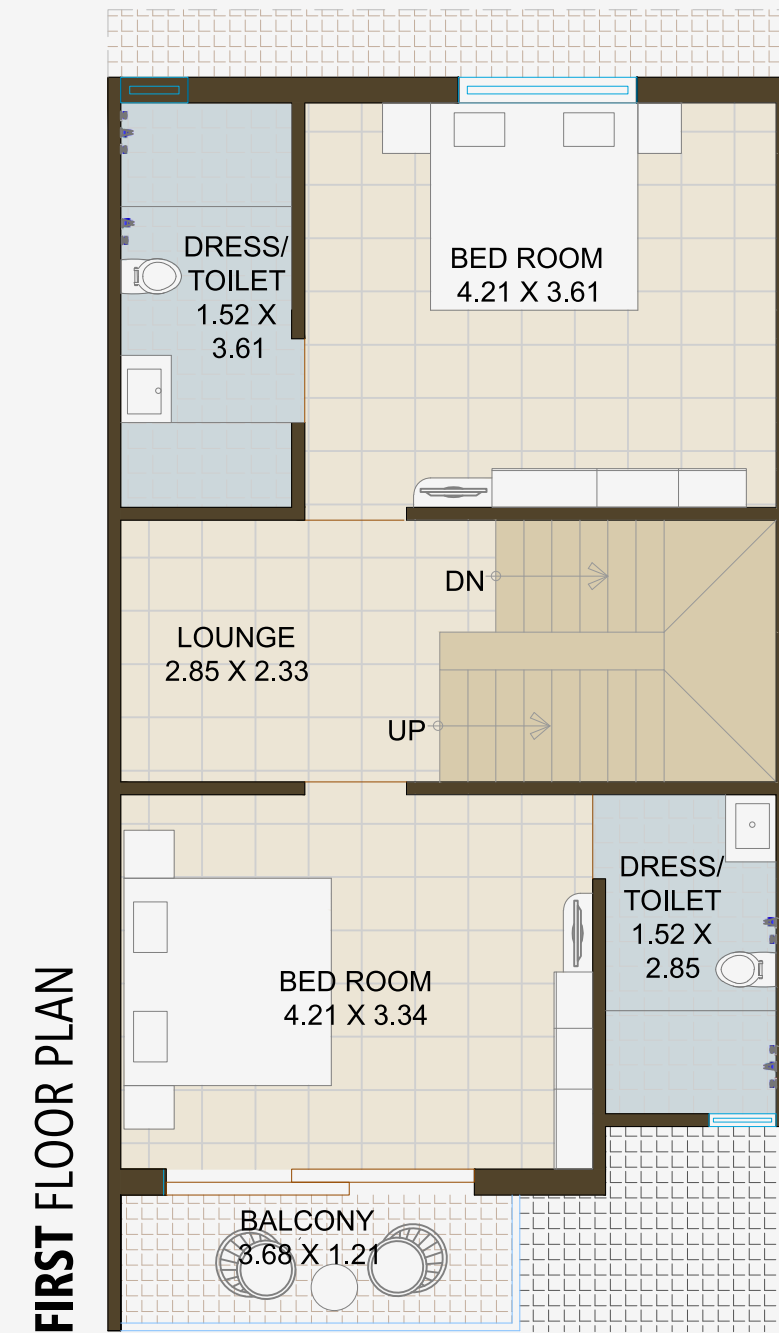


BUNGLOW NO.  
**16**





BUNGLOW NO.  
**33, 37 & 38**





## SPECIFICATION



### FLOORING

Standard Vitrified tiles for entire flooring in all bungalows.



### DOORS & WINDOWS

Decorative main door & other flush doors with wooden/granite frame. All windows in aluminum section with granite seal.



### ELECTRIFICATION

Branded ISI modular switches with concealed  
Branded ISI wiring and adequate number of points.  
MCB distribution panel.



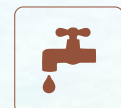
### KITCHEN

Granite platform with S.S. sink,  
Glazed tiles up to lintel level.



### WALL FINISH / ELEVATION

Internal mala plaster with white finish putty.  
Attractive external elevation with  
double coat sand faced plaster.



### PLUMBING

ISI CPVC and UPVC pipes for water supply, PVC & SWR pipes  
for solid waste and drainage systems. Percolation recharge  
wells as per the norms. Standard CP fittings.



### TOILET

Glazed tiles on floor and walls up to lintel level.  
Premium Quality Sanitary ware & bath fittings.



### TERRACE

China mosaic for heat reflection.



**NOTE :** • Commencement and timely execution of the project is subject to all necessary approvals from relevant govt. authorities, occurrence of natural calamities or any other external forces beyond developer's control. • The dimensions shown in the brochure are approximate. • The developer reserves the right to change, revise or make any modification, addition, omission or alteration in the scheme as a whole or part thereof, at their sole discretion. • The brochure is only for illustration & private circulation purpose & is not a legal document or a binding one. • Subject to Ahmedabad Jurisdiction. • Payments in favour of "SAHYOG DEVELOPERS"

DEVELOPERS  
**SAHYOG**  
DEVELOPERS

SITE ADDRESS  
SHOOLIN BUNGLOWS  
B/h. Maheshwari Bhavan, Nr. Ayush Bungalows,  
Vastral-Singarva Road, New Vastral (Singarva), Ahmedabad.

CONTACT  
99981 75917 - 94265 19875  
98257 20854 - 98250 32990

ARCHITECT :  
**SCALE**  
CONSULTANCY  
ASSOCIATES

DEVELOPERS  
**SAHYOG**  
DEVELOPERS

SCAN FOR LOCATION



SITE ADDRESS  
SHOOLIN BUNGLOWS  
B/h. Maheshwari Bhavan, Nr. Ayush Bunglows,  
Vastral-Singarva Road, New Vastral (Singarva), Ahmedabad.

CONTACT  
**99981 75917 - 94265 19875 - 98257 20854 - 98250 32990**