

SULABH EXOTICA

2BHK LUXURIOUS APARTMENTS

————— AT MANINAGAR —————



SULABH EXOTICA

2BHK LUXURIOUS APARTMENTS

AT MANINAGAR

Exotic living can mean different things to different people, but in the context of this piece, it means to live life in a true and authentic way. Humans, by nature, are exotic beings. We were meant to be. Could you imagine a world where everyone was the same? We are all shaped by our different perspectives, views and life experiences.

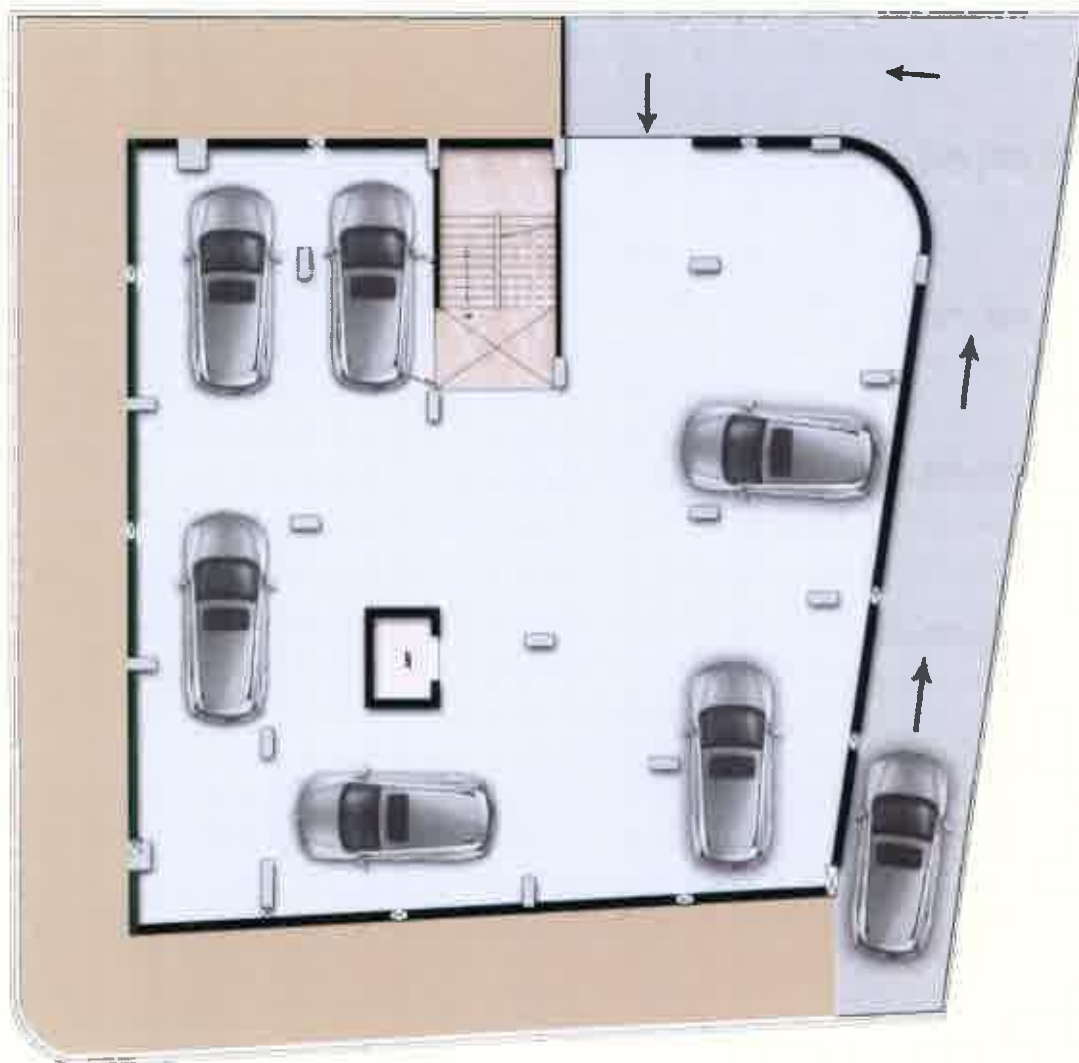


SULABH EXOTICA

2BHK LUXURIOUS APARTMENTS

AT MANINAGAR

You are known by the lifestyle you adopt. Lives encircle around the delights of a home. Those little pebbles of glee that always stay protected in the cocoon of luxury, wrapped in charm and covered with memories are the perfect interpretation of a lifestyle filled with luxury.



BASEMENT PLAN

- More available land with parking under building.
- Enhance access.
- Minimize maintenance
- Maintain traffic security



GROUND FLOOR PLAN

- CONVENIENT GROUND FLOOR PARKING.
- RESIDENTS HAVE MORE SPACE TO ENJOY
- GREEN SPACE WITH OPEN AREA AND SITTING ARRANGEMENTS.





20 ft T.P.S road



30 ft T.P.S road

TYPICAL FLOOR PLAN

FIRST TO FIFTH FLOOR

Your comfort zone is a place where you keep yourself in a self-illusion and nothing can grow there but your potentiality can grow only when you can think and grow out of that zone.



TYPE A

LIVING ROOM	- 3.53 X 3.02
KITCHEN	- 3.14 X 2.01
WASH AREA	- 2.22 X 1.24
BEDROOM	- 2.93 X 3.02
C. TOILET	- 1.13 X 1.93
M.BEDROOM	- 4.44 X 4.40
ATT. TOILET	- 1.61 X 1.50



TYPE B

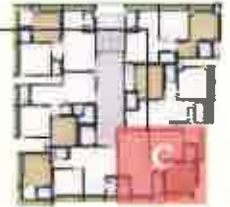
LIVING ROOM	- 3.53 X 3.02
KITCHEN	- 3.14 X 2.01
WASH AREA	- 2.22 X 1.24
BEDROOM	- 2.93 X 3.02
C. TOILET	- 1.13 X 1.93
M.BEDROOM	- 4.44 X 4.40
ATT. TOILET	- 1.61 X 1.50





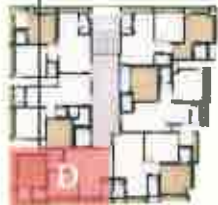
TYPE C

LIVING ROOM	- 4.60 X 3.09
KITCHEN	- 2.22 X 2.09
WASH AREA	- 1.88 X 1.20
BEDROOM	- 2.89 X 1.20
ATT. BALCONY	- 1.38 X 1.44
C. TOILET	- 2.09 X 1.19
M.BEDROOM	- 3.05 X 3.37
ATT. TOILET	- 1.54 X 1.31



TYPE D

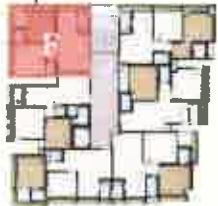
LIVING ROOM	- 2.92 X 5.00
KITCHEN	- 3.38 X 2.19
WASH AREA	- 1.88 X 1.20
BEDROOM	- 3.38 X 3.04
C. TOILET	- 1.09 X 1.84
M.BEDROOM	- 3.21 X 3.68
ATT. TOILET	- 1.17 X 1.60
ATT. BALCONY	- 1.30 X 1.35





TYPE F

LIVING ROOM	- 3.85 X 3.33
KITCHEN	- 2.55 X 2.02
WASH AREA	- 2.21 X 1.02
BEDROOM	- 3.01 X 4.14
C. TOILET	- 1.63 X 1.08
M.BEDROOM	- 3.10 X 3.04
ATT. TOILET	- 1.44 X 1.33
ATT. BALCONY	- 1.66 X 1.34



TYPE E

LIVING ROOM	- 3.15 X 3.15
KITCHEN	- 1.97 X 3.49
WASH AREA	- 2.11 X 1.16
BEDROOM	- 3.18 X 3.80
C. TOILET	- 1.03 X 1.21
M.BEDROOM	- 3.07 X 2.83
ATT. TOILET	- 1.92 X 1.80



Amenities



Entrance Gate With Adequate Security



Stretcher Friendly Automatic Elevators



Basement Parking



Power Back For Common Amenities



24 x 7 Water Supply



DTH & TV Connections



Fire Safety Systems



24 x 7 CCTV Surveillance

Specifications

Flooring

- 24"x24" vitrified tiles in all area

Walls

- Internal walls and ceiling - main plaster with wall putty.
- External walls - double coat sand-face plaster with apex paint.

Kitchen

- Kitchen platform with granite top and stainless steel sink.
- Designer ceramic tiles dado on kitchen counter up to 7ft ht

Doors and Windows

- Main entrance door solid core Flush door with both side moulded designer door skin.
- Other Flush doors with both side laminate.
- Anodized aluminum sliding windows with quality bearings and fittings and stone sills and jambs.

Water Supply

- Centralize water supply system

Toilet

- Designer tiles on Door and walls up to lintel level.
- Branded C.P fossets.
- Branded range of ceramic sanitary ware

Plumbing

- C.P.V.C. Water supply pipes durable PVC drainage pipes for solid waste and drainage systems.

Electrical Work

- Branded modular switches
- Concealed copper wiring with adequate number of points in all rooms
- Each room will have tv, AC & cable points
- MCB distribution panel for extra safety.

Roof

- Brick-bat concrete for heat reflection and thermal insulation



