

PROJECT BY :
SUNDAY LAGOON

SUNDAY 
LAGOON
PHASE-2

FINEST LIVING SPACES
CRAFTED FOR A PERFECT LIFE





LIVE A LIFE
THAT SHINES WITH
happiness

SUNDAY LAGOON here offer the luxury of park living with refreshing panoramic views.

Colours, textures, tastes, scents, sounds will be heightened by the crisp open air that will connect you with nature, nurturing the rare and real moments of life.

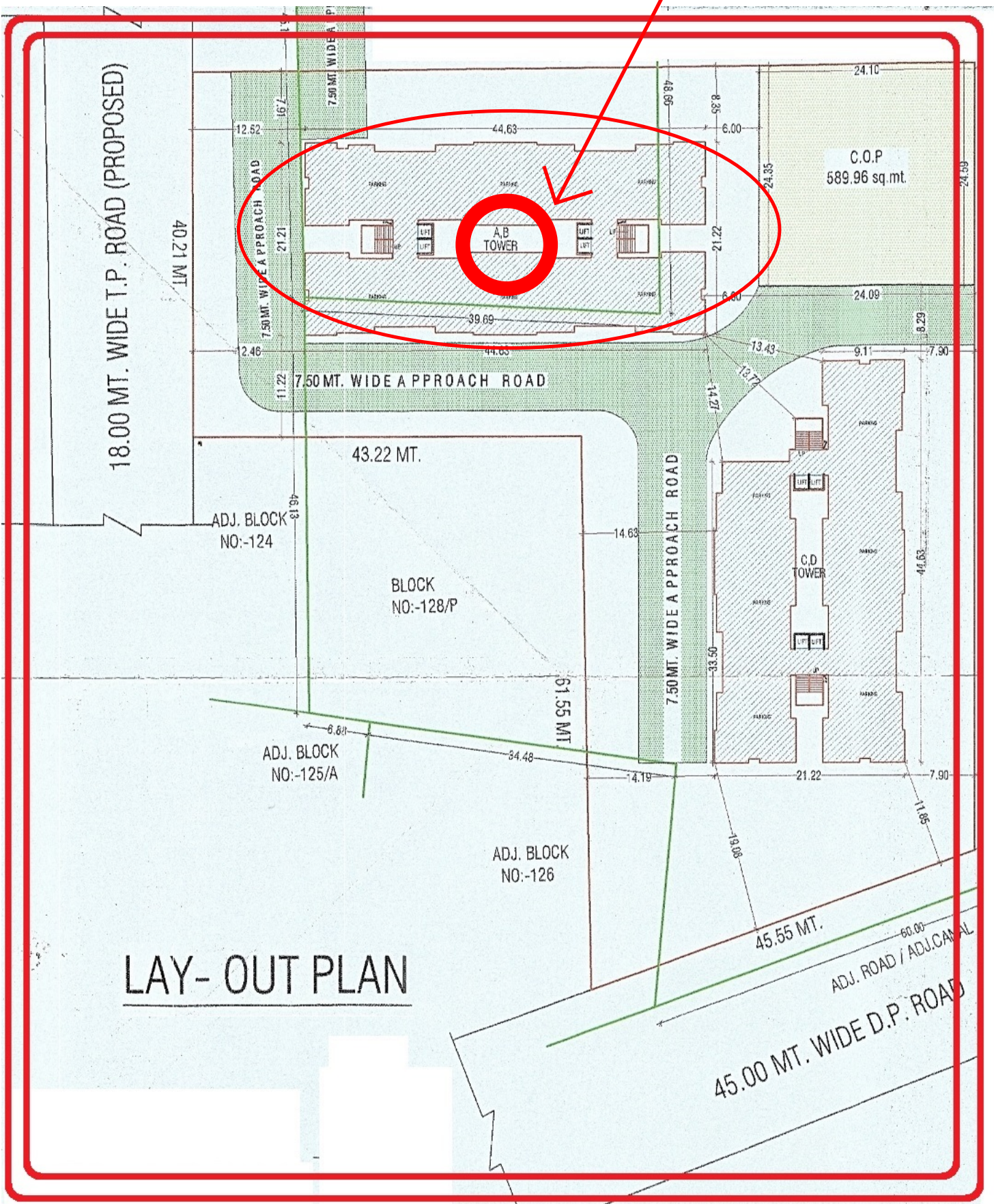
SUNDAY 
LAGOON
PHASE-2

SUNDAY
LAGOON
PHASE-2

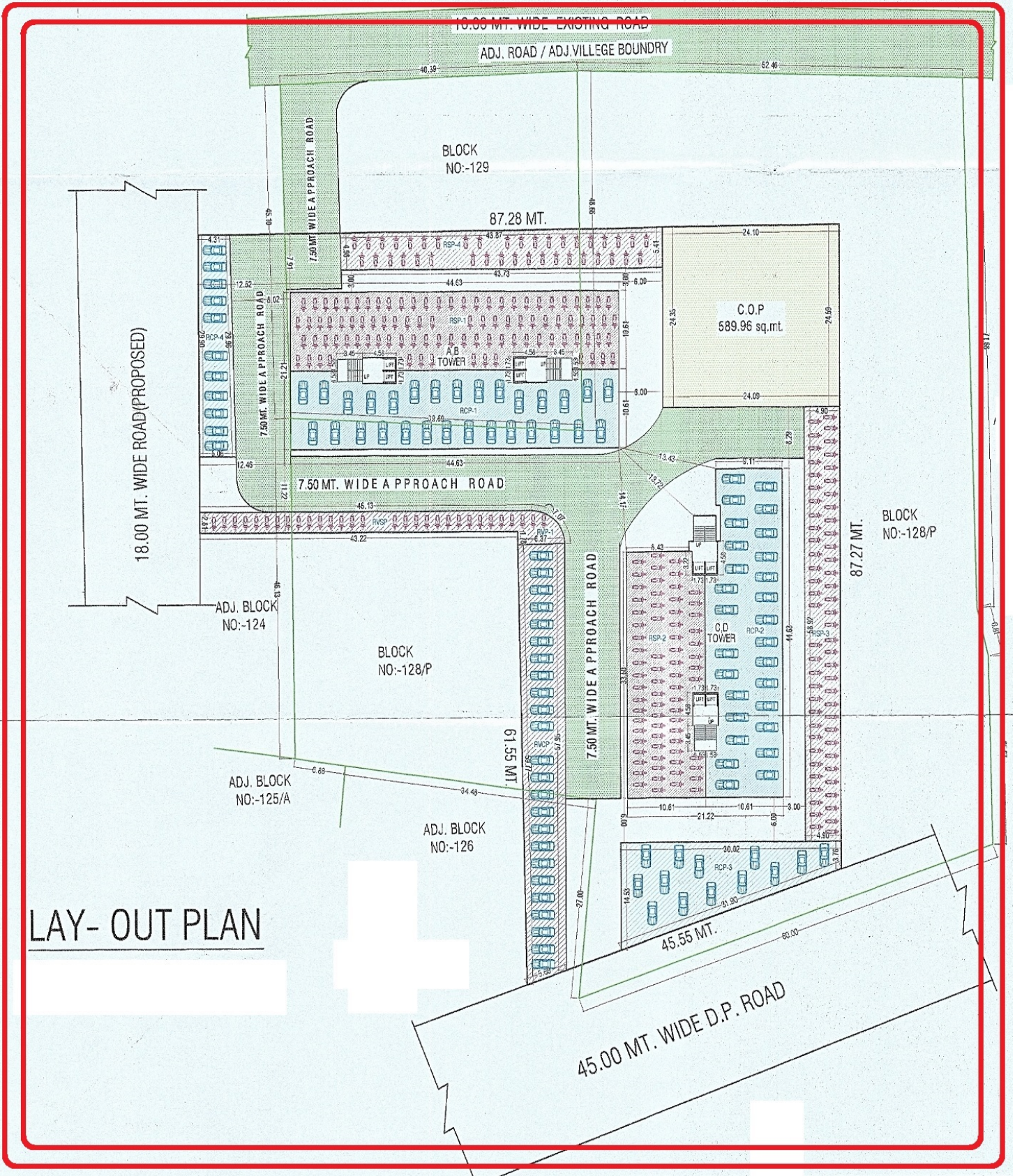
THIS IS EXACTLY HOW
A MODERN-DAY
heaven looks



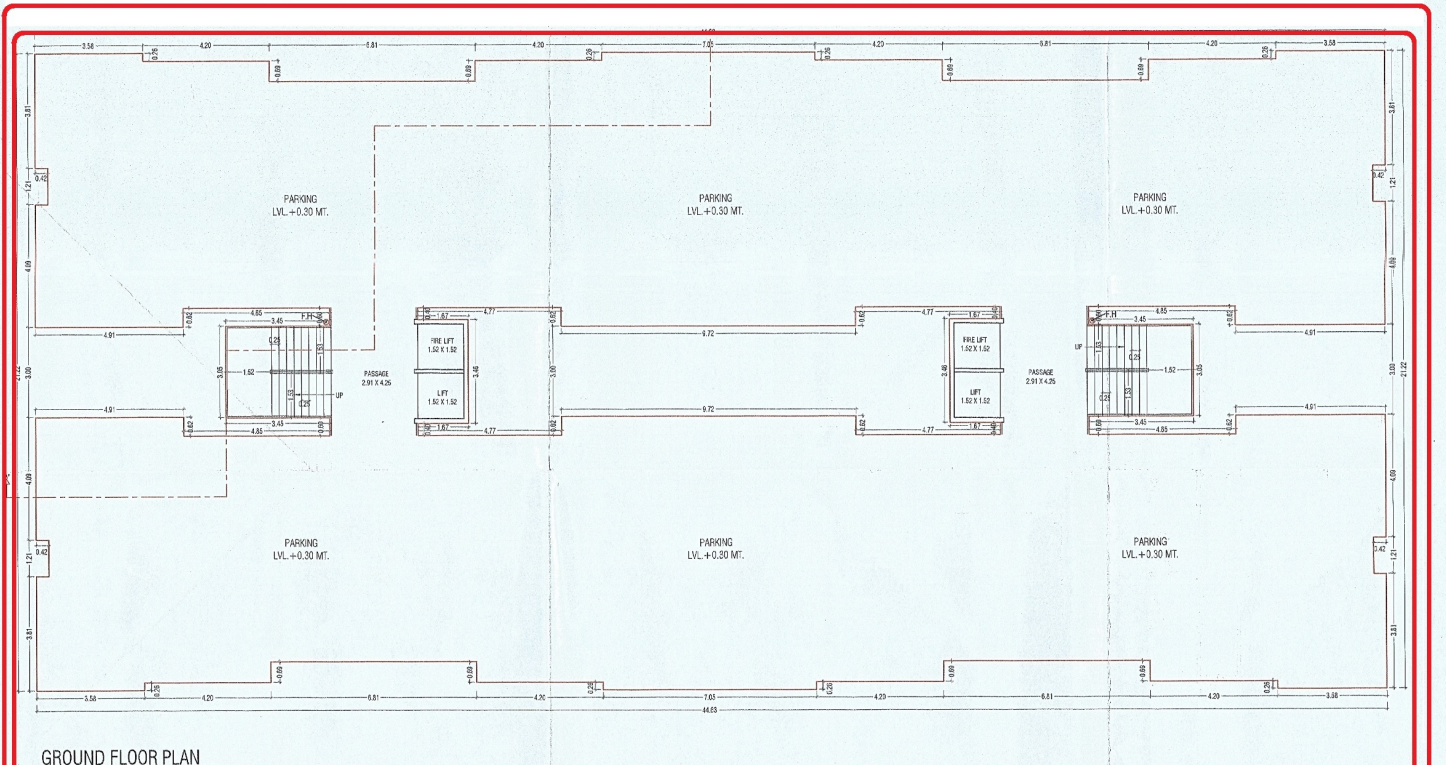
SUNDAY LAGOON PHASE 2



LAY- OUT PLAN



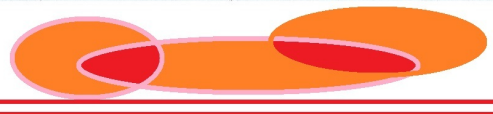
LAY- OUT PLAN



GROUND FLOOR PLAN



TYPICAL FLOOR PLAN
(1ST TO 13th FLR.)







SPECTACULAR ELEVATION
THAT IS SURE TO IMPRESS YOU.

GLORIOUS



FANTASTIC LIFESTYLE AMENITIES
FOR YOU TO INDULGE IN.

MODERN



PLANNING TO MODERN DAY
LUXURIES AND COMFORT

ELEGANT

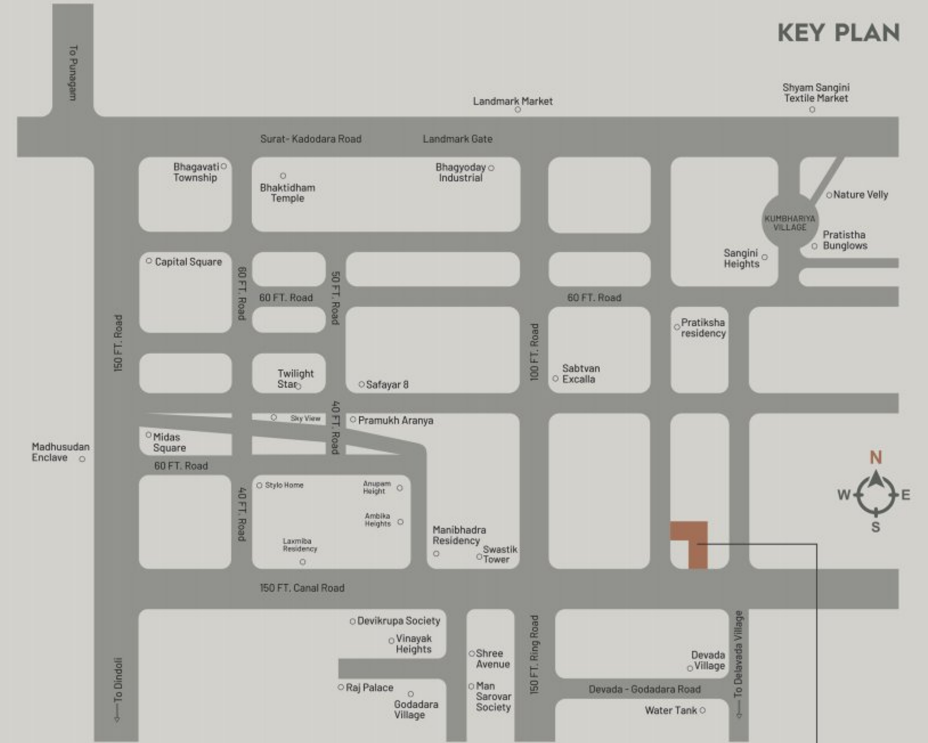
PRESTIGIOUS

AN ADDRESS THAT SHOWCASE YOUR STATUS.



AMENITIES

- Attractive main gate with compound wall.
- Club House with multipurpose hall.
- Landscape designer garden with jogging track & senior citizens area.
- Ply ground for children.
- CCTV camera system on main gate, parking area, campus and reception.
- Generator facility for lift, passage and water pump.
- 2 elevators in each building.
- Exclusive foyer with reception.
- Name plate facility in all building.
- Anti termite treatment in whole campus.
- Internal R.C.C. Road with pavers block.



SPECIFICATIONS

- FLOORING**
24" x 48" Or premium quality tiles flooring in entire flat
- WINDOWS**
Good quality anodized aluminium section window with granite sill framing
- KITCHEN**
Granite finished platform with S.S. sink, designer glazed tiles up to lintel level
- DOOR**
Decoration main door & all other doors with granite frames. Locks and fittings of Standard company make
- TOILET**
Elegantly designed toilet with designer glazed tiles up to lintel level

- WALL**
Putty finished on all internal walls, External walls will be Finished with double coat plaster with paint
- PLUMBING**
Centralized hot water points in bathrooms. Good quality concealed plumbing (Jaguar or Equivalent), Premium quality PVC fittings in each toilet
- ELECTRIFICATION**
- A/C console fitting in bedrooms
- Modular switches with adequate point in all bedrooms with concealed conducts and ISI grade copper wiring, TV point in master bedroom and hall
- RAILING**
Attractive designer glass & stainless steel railing
- WASH**
Kota flooring with tiles up to dedo level
- STORE**
Store with multiple marble steps with tiles till lintel level

SITE ADDRESS
Sunday Lagoon, Behind Kumbhariya Gam,
150 F.T. Canal Road, T.P. 35 F.P. No.4, Surat.
CONTACT : +91 99252 04571

A PROJECT BY
Sunday Lagoon

ARCHITECT
Ar. Ashvin Dobriya

STRUCTURAL DESIGNER
VRAJLALBHAI AMBALIYA

NOTE :
1. Legal document, S.M.C. tax, service tax / VAT / GST charges (if applicable) 2. External changes shall not be allowed
3. Internal changes will be done with prior permission and will be charged extra in advance 4. All rights reserved by the developer for modification in any detail mentioned in booklet with outprior notice 5. Society maintenance deposit will be taken in advance6. If changes by low of any authority its bounded to all members 7. All types of document charges are to be born by the buyer (this may include bankkhat, sale deed, title charges, stamp duty, index, registration and advocate fees, etc.)
Electrical supply and gas supply installation charges, service charges, security deposit and infrastructure charges to be born by the buyer9. This booklet is for general idea and information only and shall not form any part of any agreement 10. Grill charges to be beard by the buyer

