



[www.swaragroup.in](http://www.swaragroup.in)

[www.eyecodesign.in](http://www.eyecodesign.in)

3 BHK DIVINE APARTMENTS



SWARA  
SANIDHYA

EXPERIENCE A LIFE OF ETERNAL



# LUXURY

ELEGANT  
SPACIOUS  
THOUGHTFUL

Swara Sanidhya is a beautifully designed project promising a life brimming with elite luxury and lifestyle. It's a home that celebrates life and its residents. A home that gifts you the best of what life has to offer.

SWARA  
SANIDHYA





ELEGANT

SOPHISTICATED  
ELEVATION THAT  
SHINES GLORIOUSLY

SWARA  
SANIDHYA



SPACIOUS

ENOUGH SPACE TO ACCOMMODATE  
ALL YOUR DREAMS



AN ADDRESS YOU WOULD  
WANT TO MAKE YOUR OWN





# THOUGHTFUL

INTELLIGENTLY PLANNED  
HOME TRULY  
UNDERSTANDS YOU

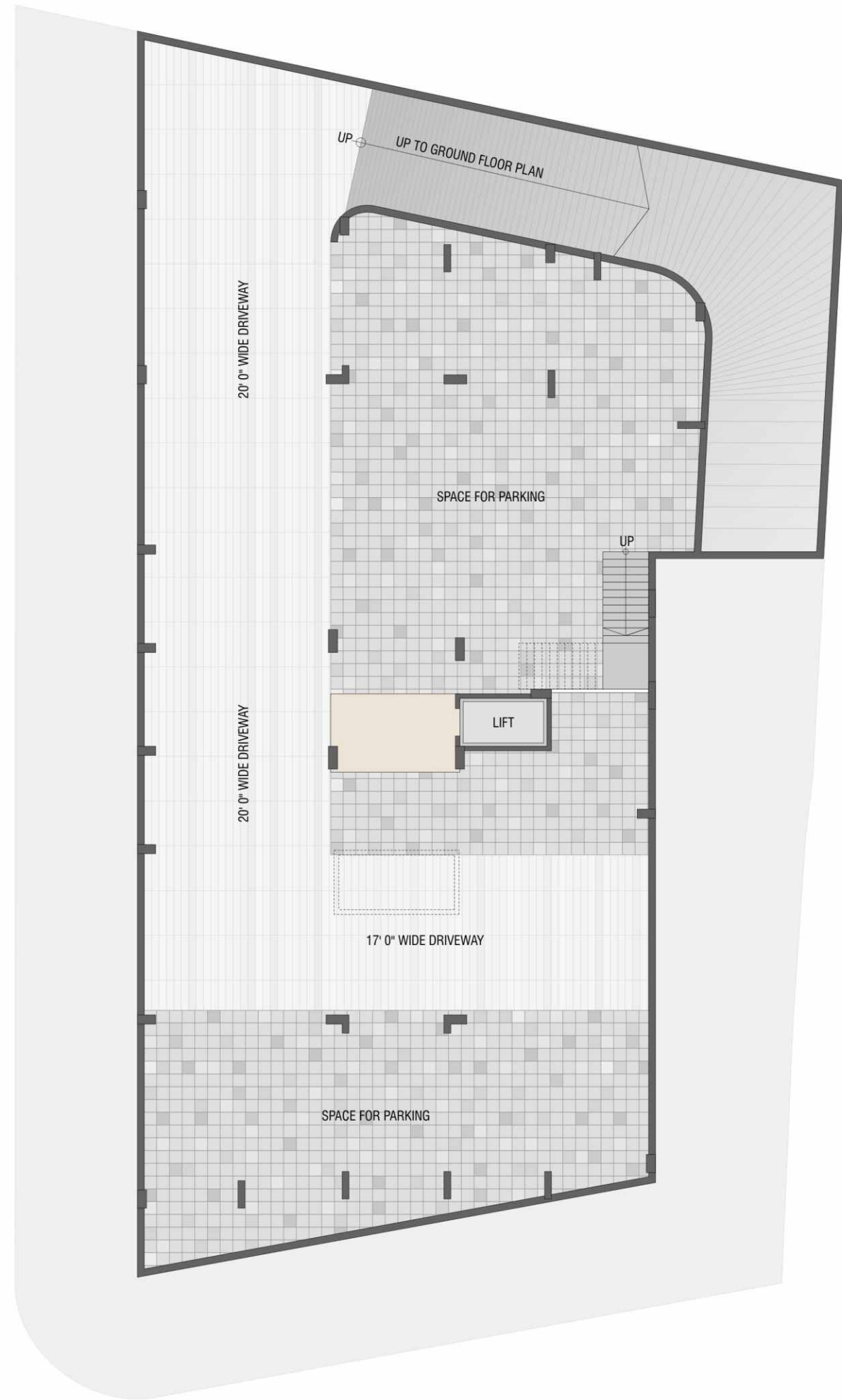
- Thermal insulated common hot water piping for all bathroom
- Standard make automatic elevator
- PNG gas connection provision
- Allotted four wheeler and two wheeler sufficient parking
- Effective anti-termite treatment
- 24 Hr. water supply
- 24 Hr. security personnel
- Solar panel at roof-top generates clean energy for common utility energy consumption
- Well-designed conditioned multi-purpose hall
- Pleasant terrace garden with gazebo and individual sit-outs



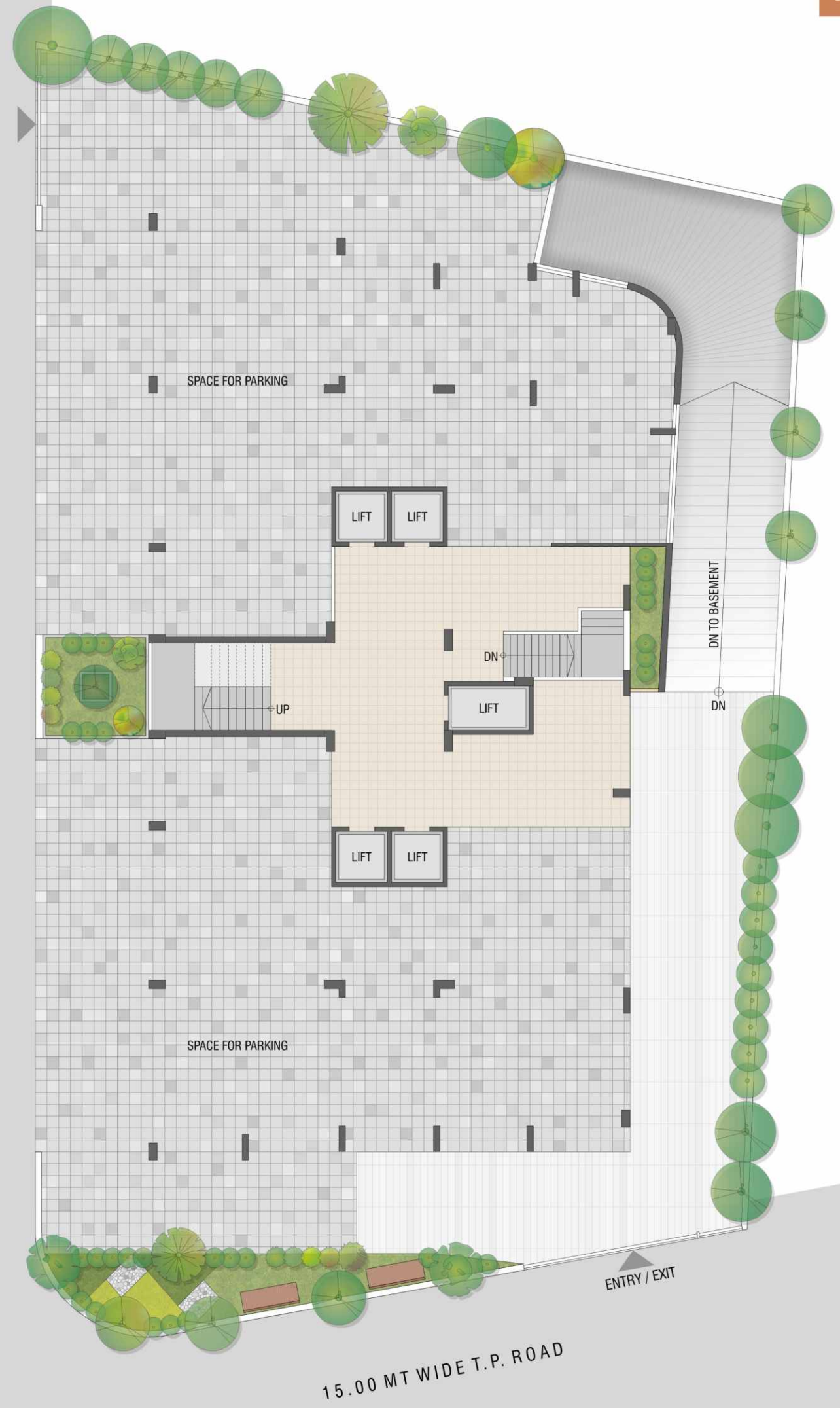
SWARA

SANIDHYA

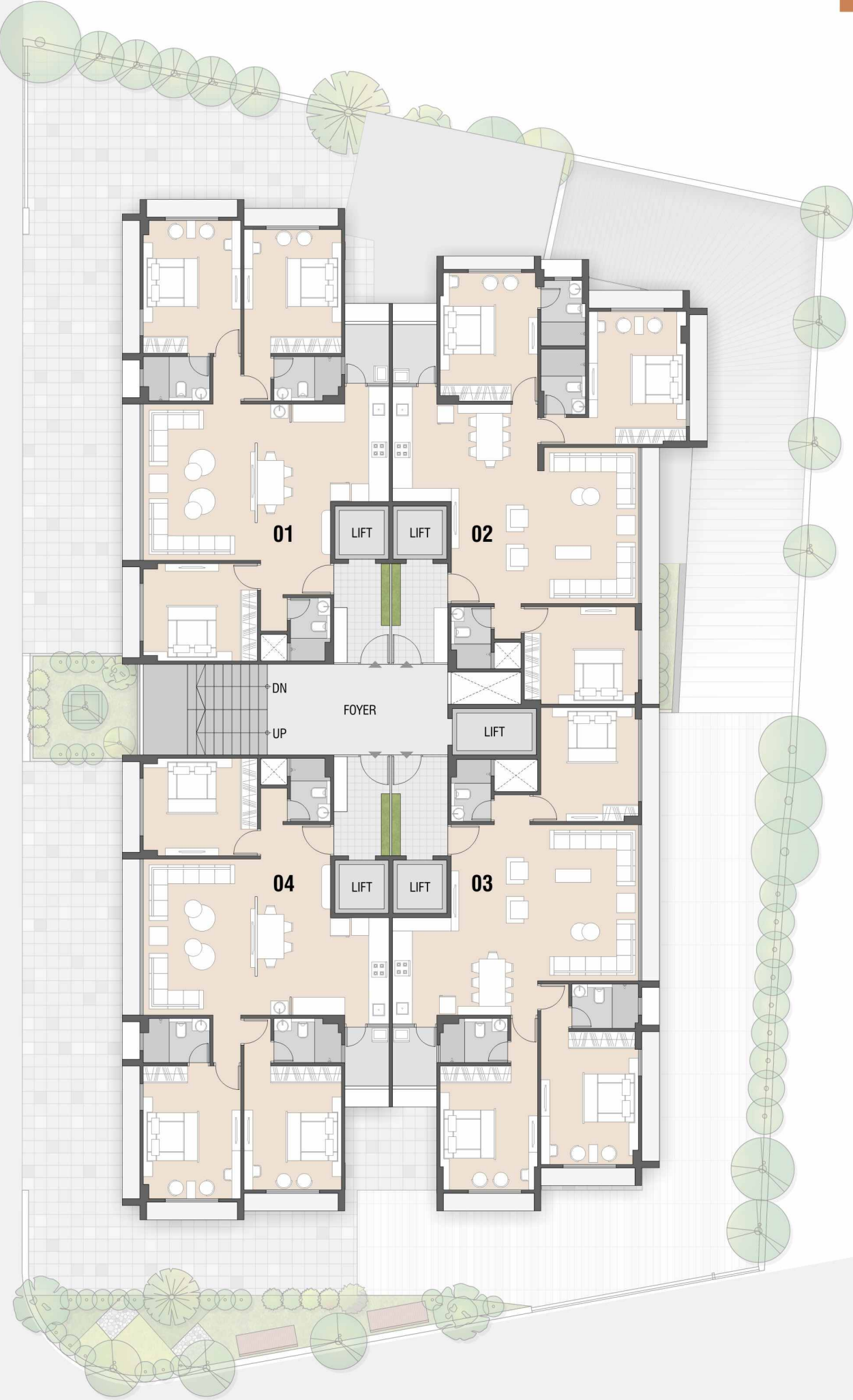
**BASEMENT PLAN**



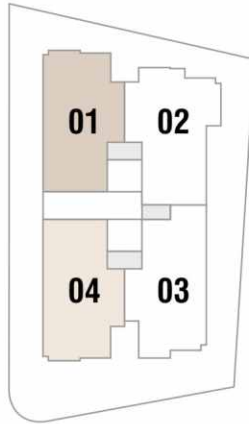
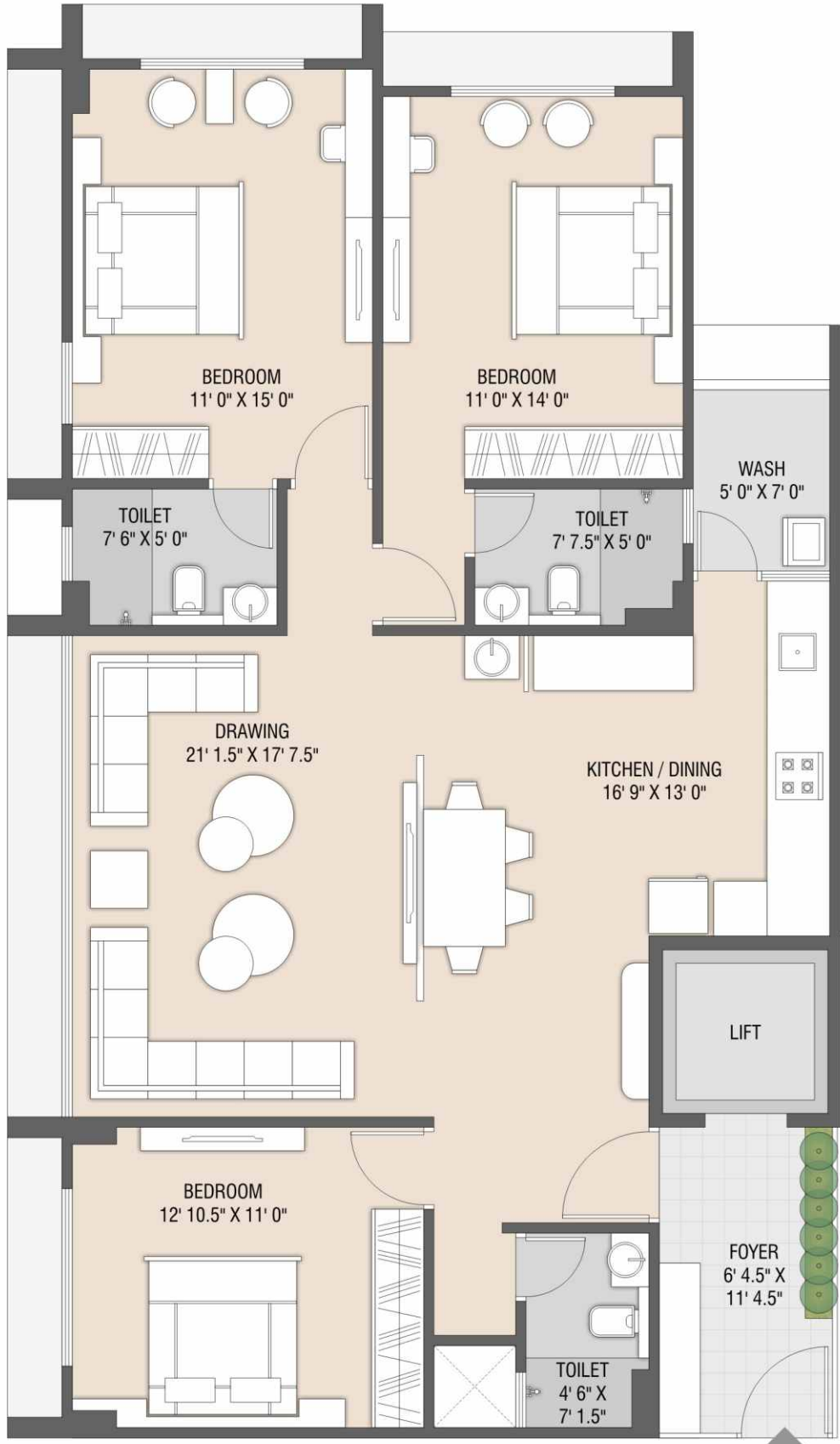
**GROUND FLOOR PLAN**



TYPICAL FLOOR PLAN



3 BHK UNIT PLAN  
TYPE - 1





**3 BHK UNIT PLAN  
TYPE - 2**



**3 BHK UNIT PLAN  
TYPE - 3**





## SPECIFICATIONS



### Flooring

- Premium vitrified tiles flooring



### Door

- Main Door  
Flush door with both side laminated sheet with wooden frame
- Internal Door  
Flush door with both side laminated sheet with granite frame



### Window

- Standard quality powder coating aluminum with 5mm glass



### Kitchen & Store

- Flooring : Vitrified tiles
- Platform : Natural granite
- Dado : Premium ceramic tiles
- Store Shelf : DP kota / Granite shelf



### Wash Area

- Floor : Kota or rustic vitrified tiles
- Dado : Premium ceramic or vitrified tiles



### Electrification

- 3 phase power connection
- Conceal ISI copper wiring with modular switches
- MCB distribution panel



### Balcony & Railing

- Rustic tiles / Granite
- M.S. Railing



### Paints

- Inside : Putty finish
- Outside : Acrylic paint / Texture



### Toilets

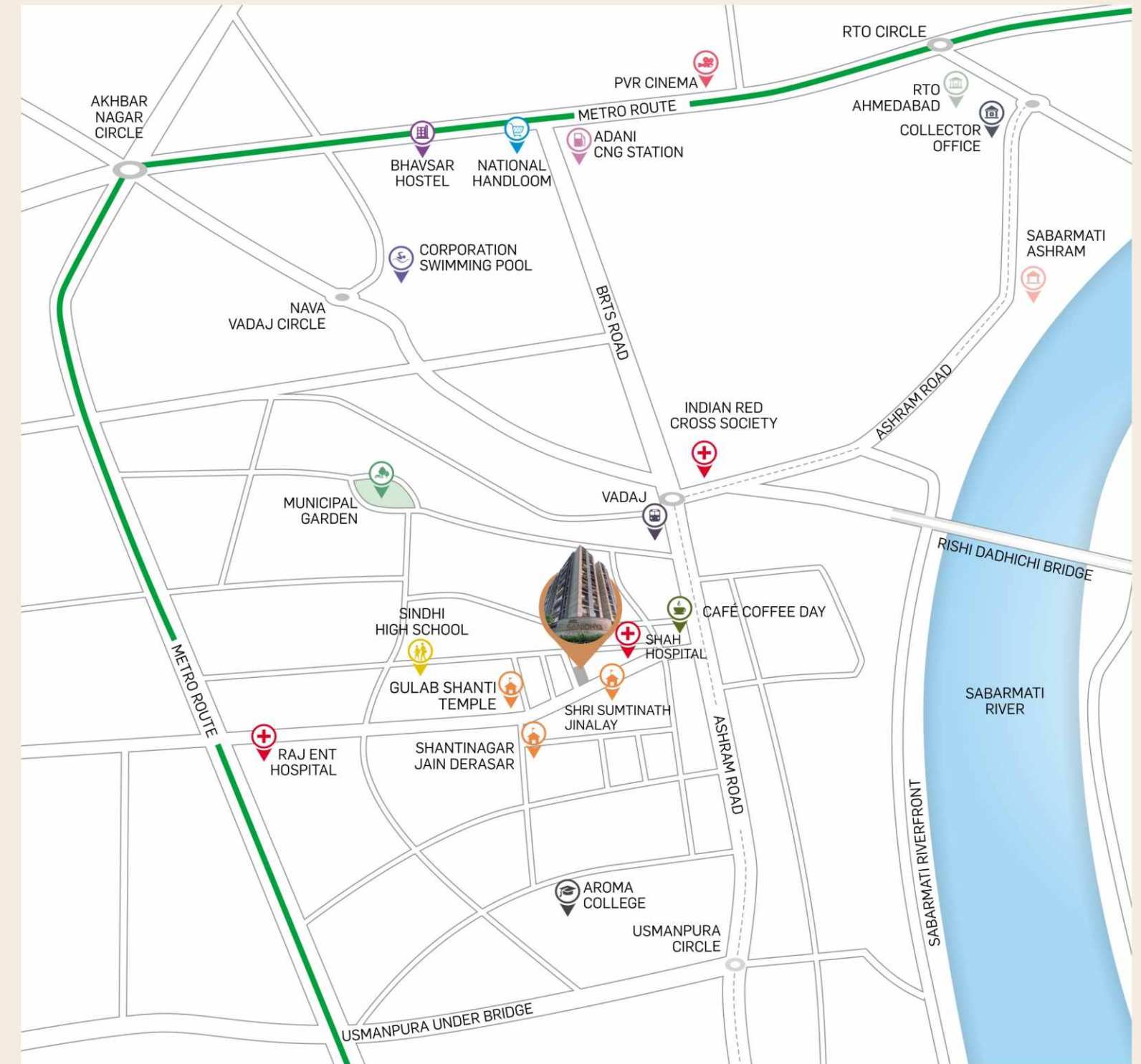
- Premium ceramic tiles upto lintel level
- Granite / Counter basin
- EWC-wall hung type - Jaquar, Kohler / equivalent
- CP Brass Fitting - Jaquar, Kohler / equivalent



### Security

- Video door phone security system to be linked with reception & access control in the lobby
- Entire campus covered under CCTV surveillance

- All rights are reserved to developer for any change in the plan, specification and any other details which will be binding to the all members.
- To maintain the aesthetics of apartment elevation, installation of AC outdoor units will be permitted at designated location only and nowhere else which will be binding to all the members.
- Changes to structural elements are strictly prohibited at all the lifetime of building. Such activity from any member at any time will be brought fourth for legal action.
- All dimension are approximate and unfinished subject to change.
- This brochure is only for advertising and visual impression only. It shall not be considered as a part of legal documents.
- Furniture and fixtures shown in brochure are for visual impression purpose only.
- Subject to Ahmedabad jurisdiction only.



SWARA

# SANIDHYA

Site: 22-23/ Shanti Nagar Society, Nr. Shah Hospital, Ashram Road,  
Naranpura, Ahemdabad - 380013

Contact: 98246 72828

sales@swaragroup.in

Architect:



Structure:



Promoter Name : SWARA INFRABUILD

follows us:



scan for location