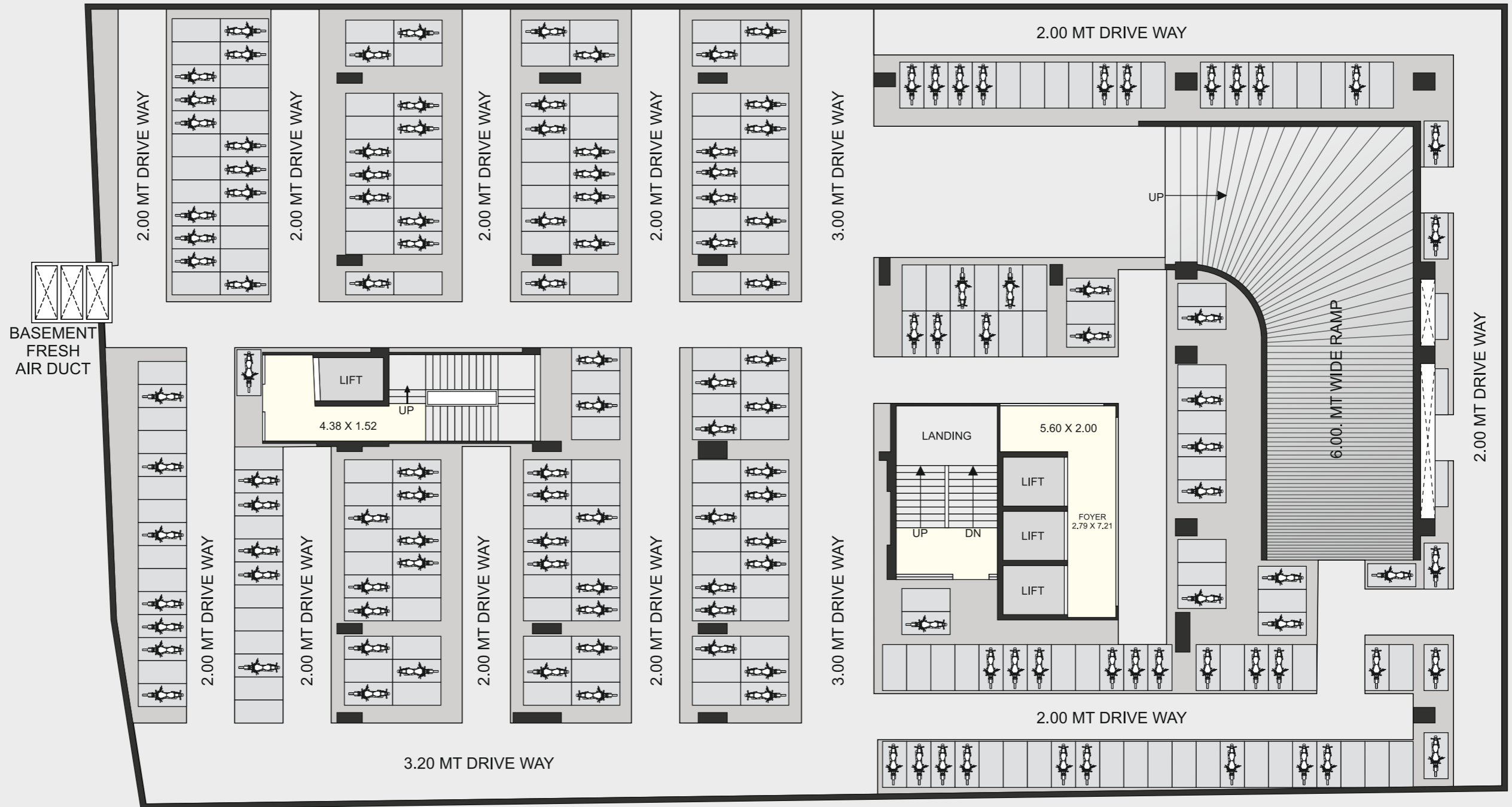


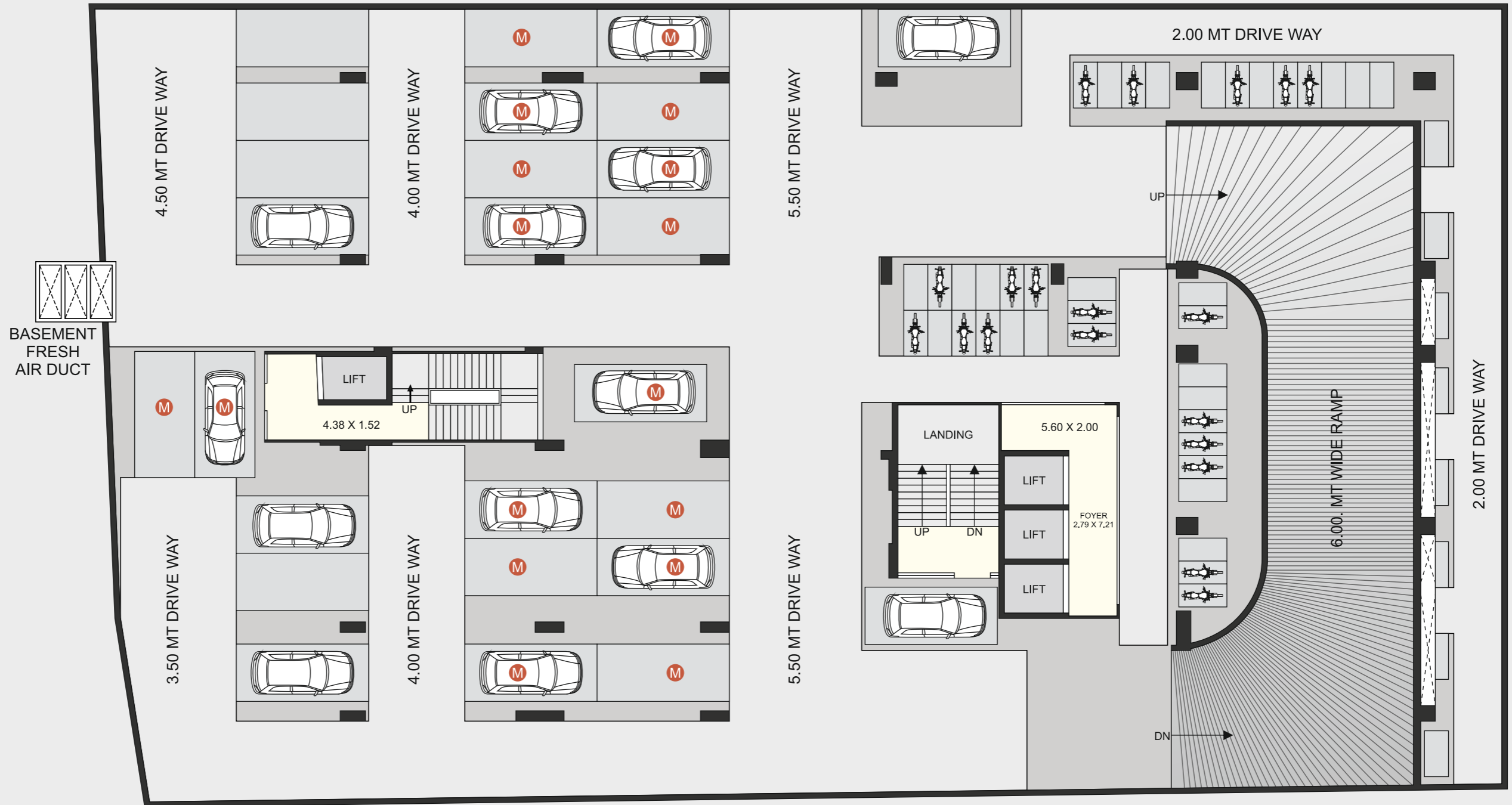
# SWASTIK CORPORATE PARK



SWASTIK  
GROUP

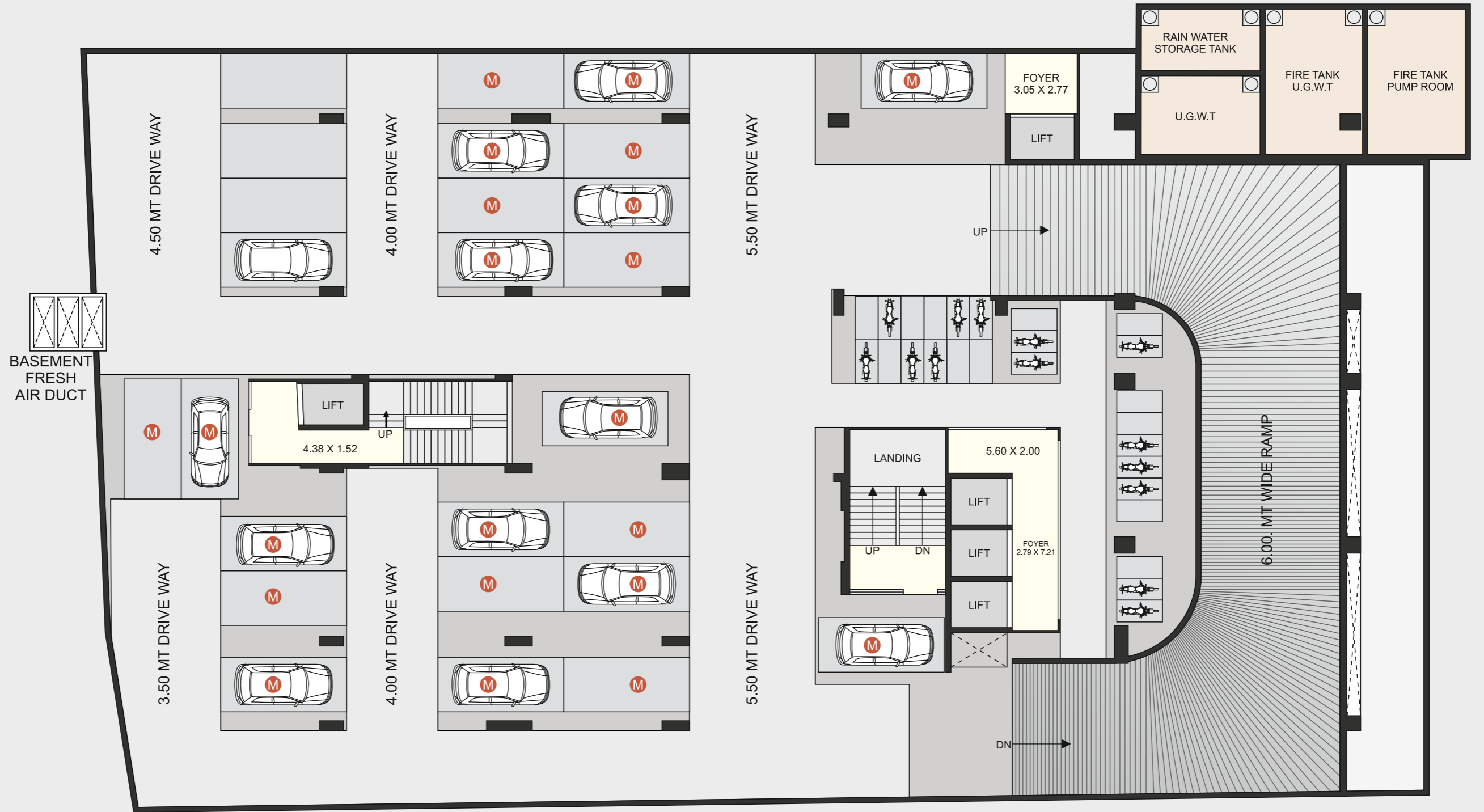
N  
BASEMENT 4





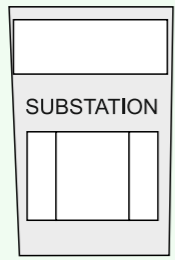
N  
BASEMENT 2





N  
GROUND FLOOR

18.00 MT WIDE SERVICE ROAD  
60.00 MT WIDE S.P. RING ROAD  
18.00 MT WIDE SERVICE ROAD



COMMON PLOT  
304.59 SQ. MT.

6.00 MT DRIVE WAY



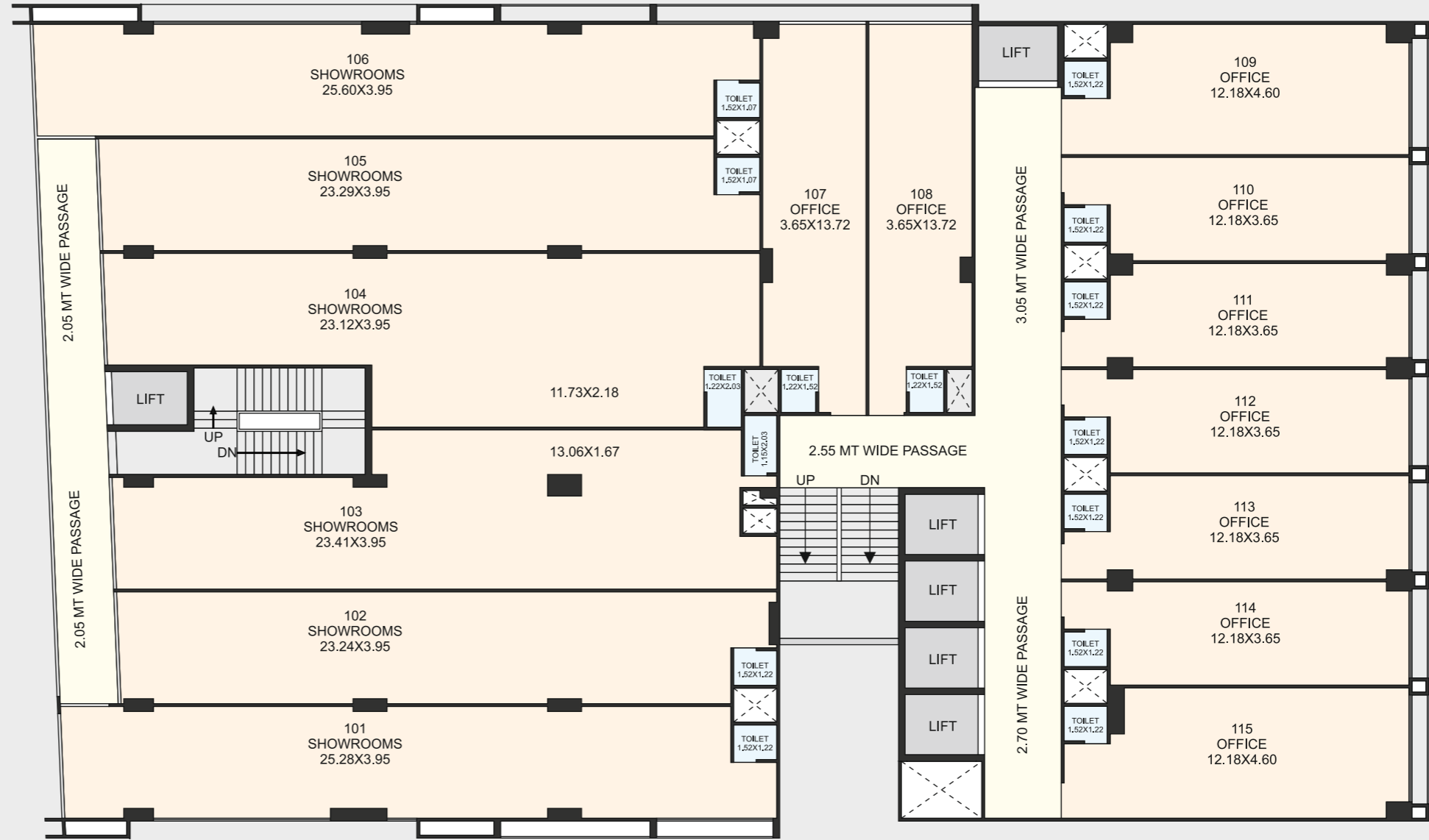
6.00 MT DRIVE WAY

6.00 MT DRIVE WAY

6.00 MT DRIVE WAY

6.00 MT DRIVE WAY

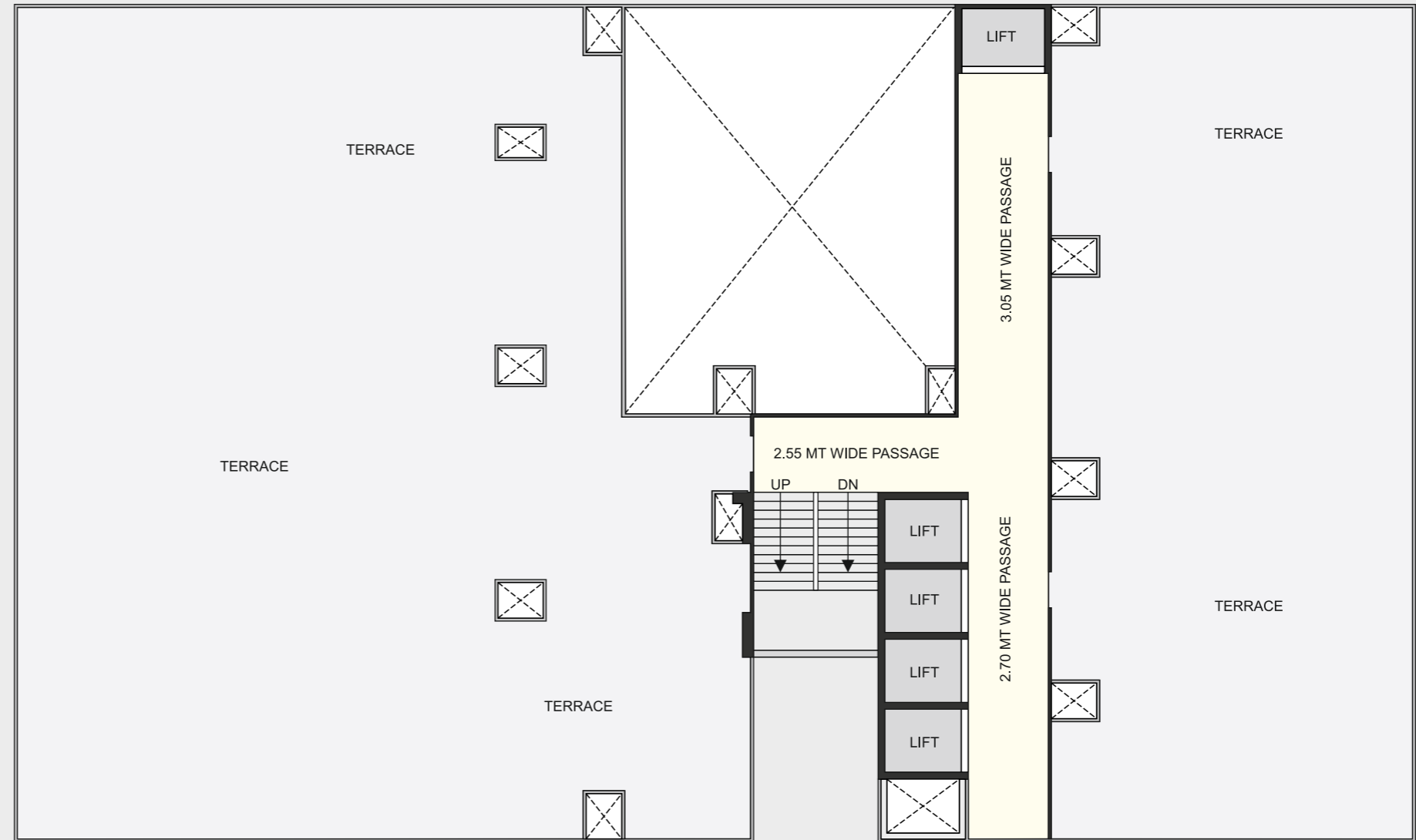
N 1st TO 3rd  
FLOOR







N TERRACE  
FLOOR





Shilaj Circle

Swastik Corporate Park

Super Speciality Hospital

Anand Niketan School

# SWASTIK CORPORATE PARK

## SPECIFICATION

### **BUILDING FACILITY:-**

- Generous parking amenities that offer Commercial and visitors convenient sheltered space.
- Gracefully crafted, the Harmonious blend of the air-conditioned foyer at ground level.
- Tower boasts an exclusive service elevator.
- Ev- charging point provision.
- With Centralized CCTV room our entire Building, ensuring safety and security.
- Four basement with allotted car parking.

### **FLOORING:-**

- Italian marble flooring in Foyer area.
- Premium Vitrified tiles in all the Showrooms & Offices & up to lintel level tile-dedo in all bathrooms.

### **WALL FINISH:-**

- Internal :- Double coat mala plaster with putty finish OR
  - Single coat mala plaster with Punning finish.
- External :- Acrylic paint of reputed brands.

### **PLUMBING:-**

- Concealed plumbing of good quality UPVC & CPVC pipes, C.P. fitting & sanitary ware of reputed brands.

### **ELECTRIFICATION:-**

- Double phase meter + MCB & ELCB tripper with concealed wiring with adequate points with modular switches.

### **DOORS AND WINDOWS:-**

- Decorative main door with wooden framing with laminate or veneer finish with having lock of reputed brands.



Swastik Corporate Park, Near Shilp The Address,  
S.p. Ring Road, Shilaj Cross Road, Shilaj,  
Ahmedabad - 380059  
CONTACT NO. - 78788 14319

