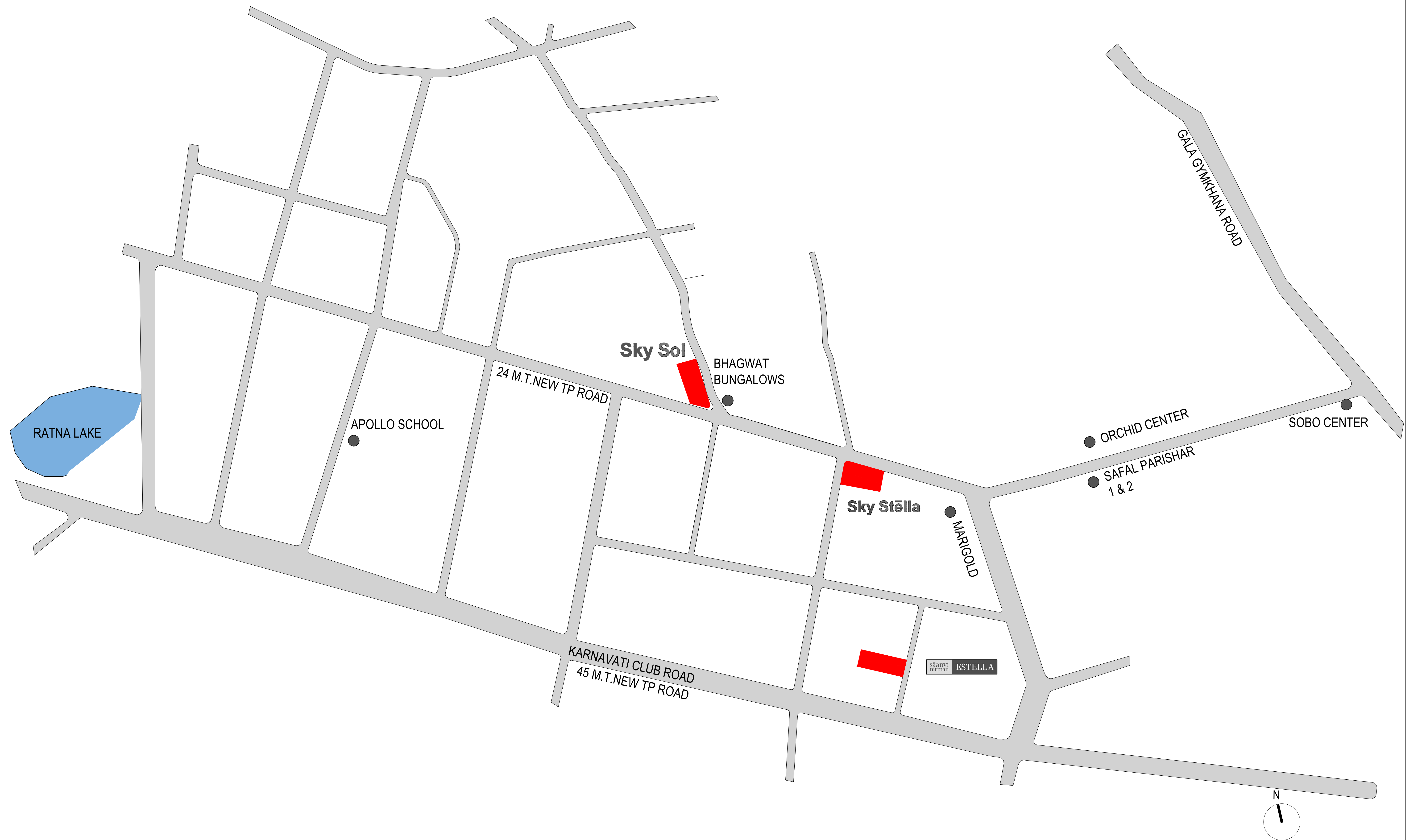


FLXII
CONCEPT BOOK

sāanvi
nirman **ESTELLA**

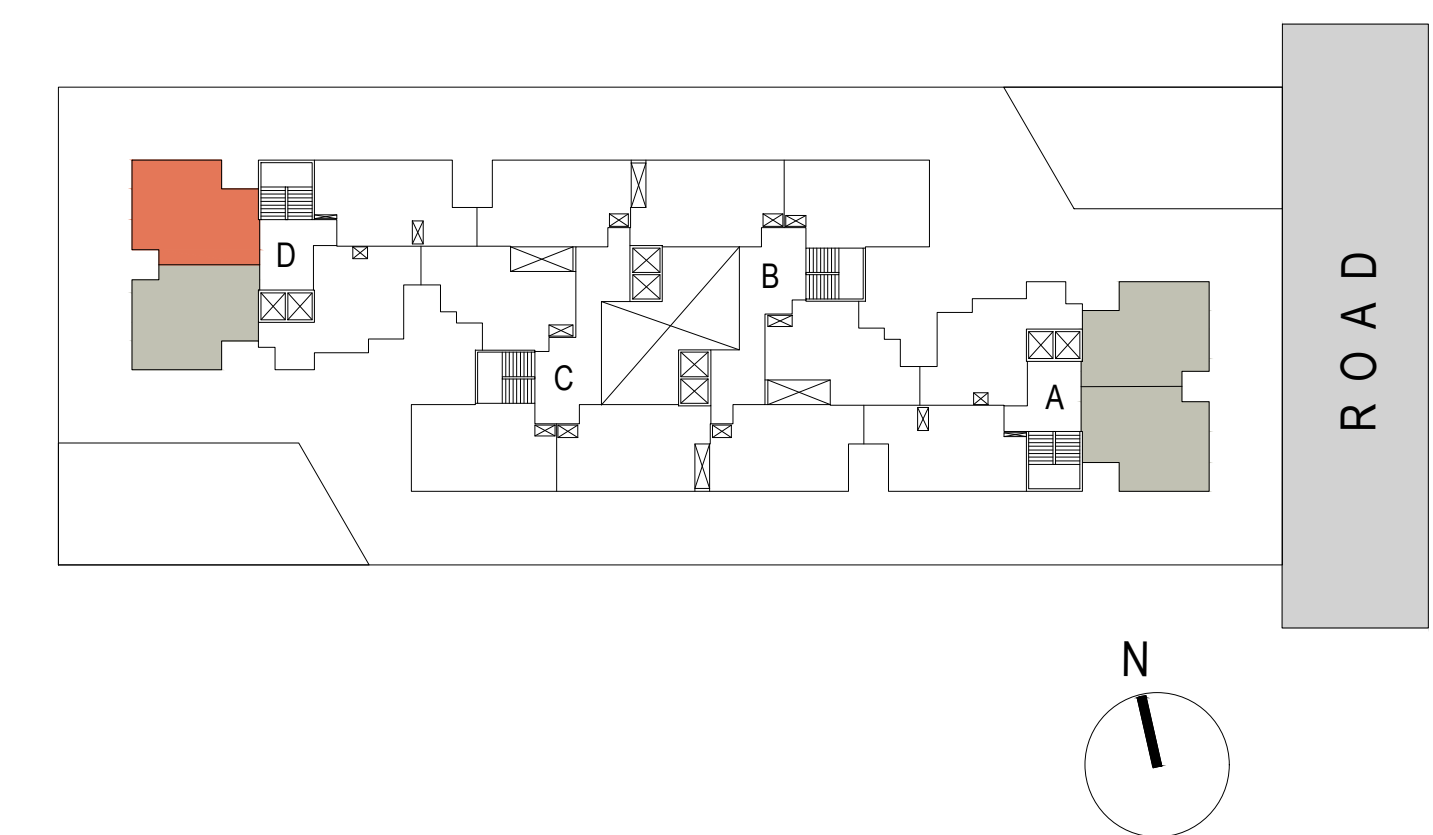
3 BHK LIVING SPACES

Note: This Document is for internal and educational purpose only. The images/ facilities / layouts / specifications / information mentioned herein are indicative and subject to changes without prior notice as may be required by the concerned authorities or as required at site.

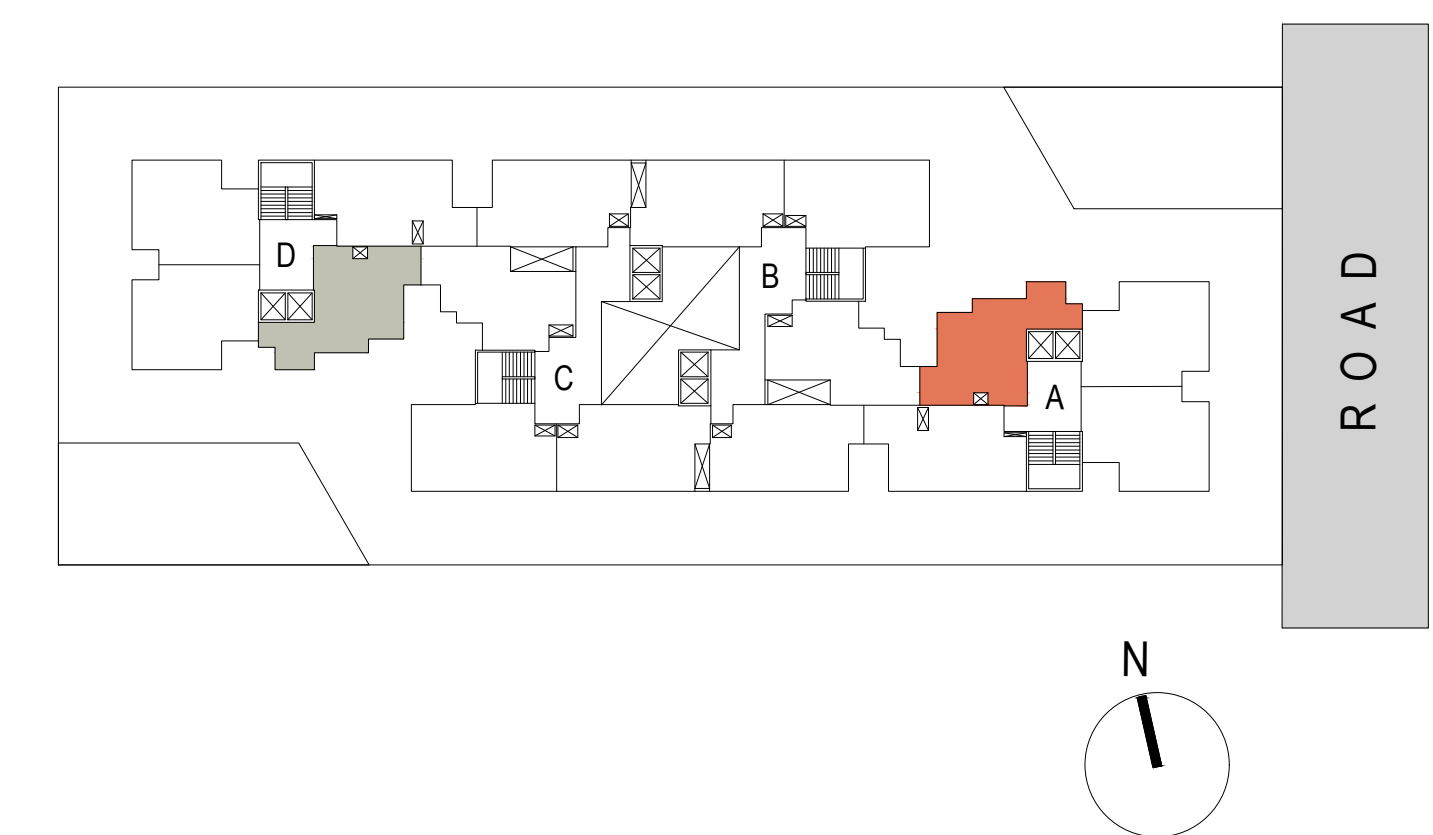


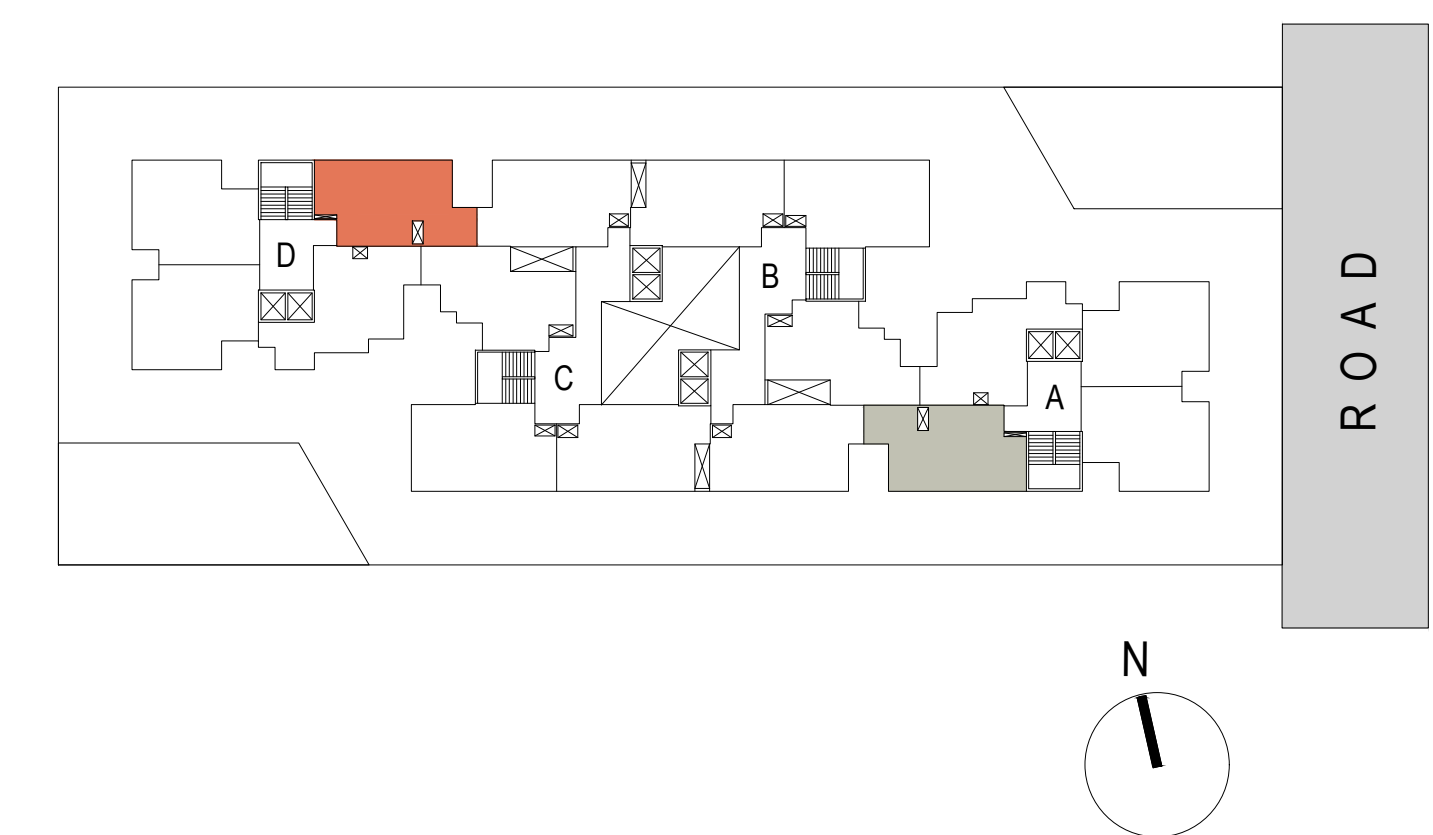
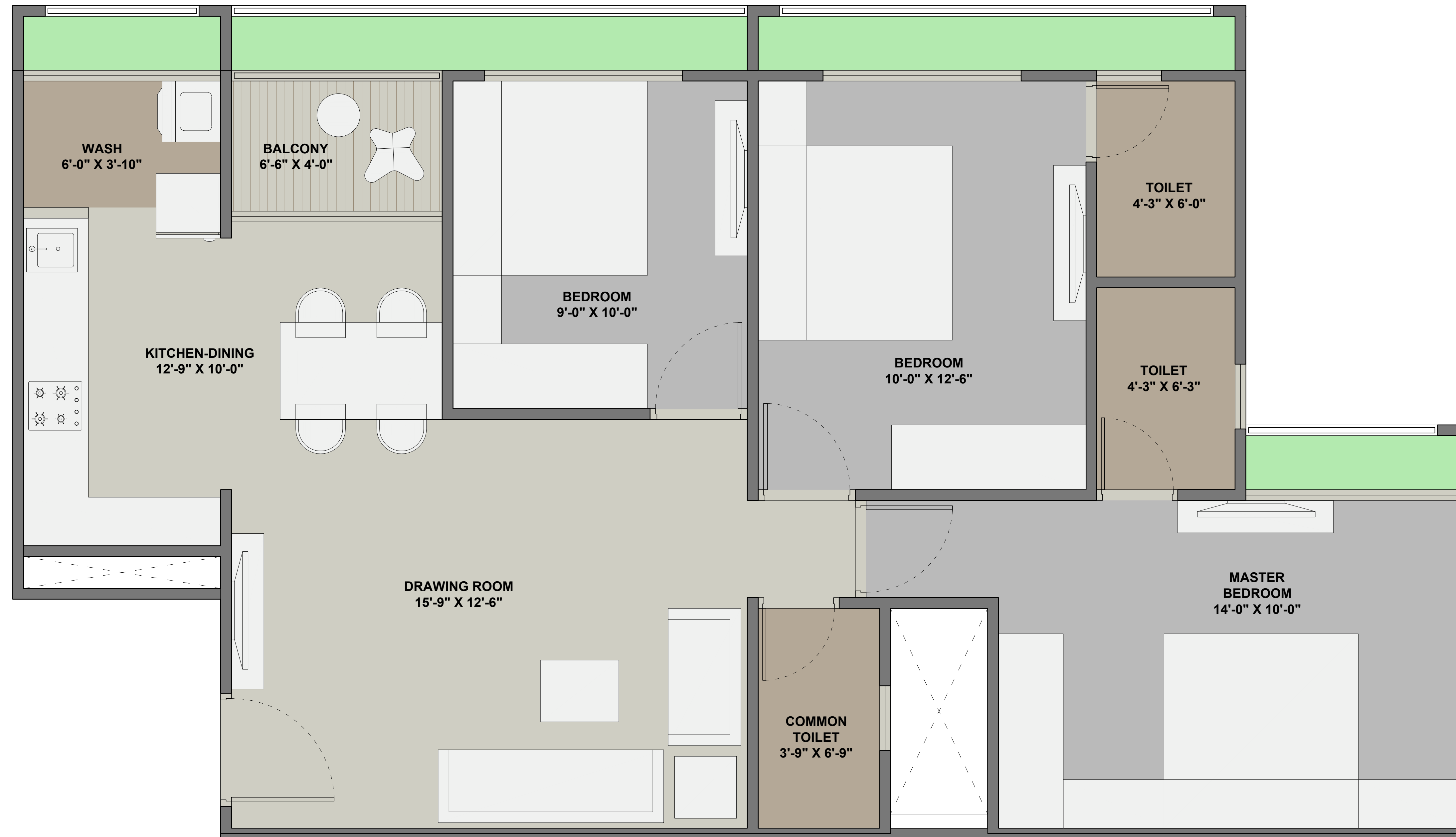
TYPICAL FLOOR PLAN

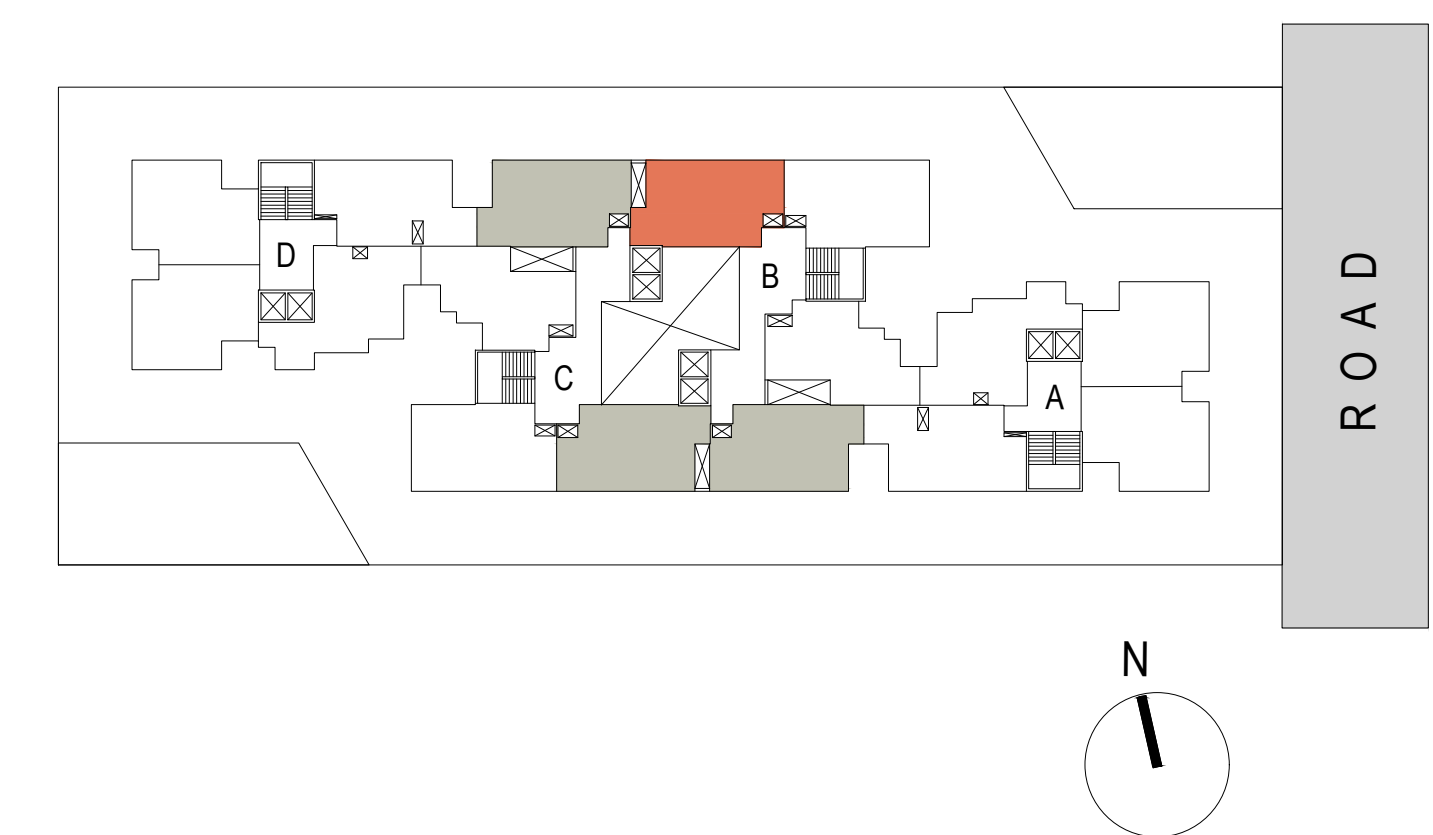
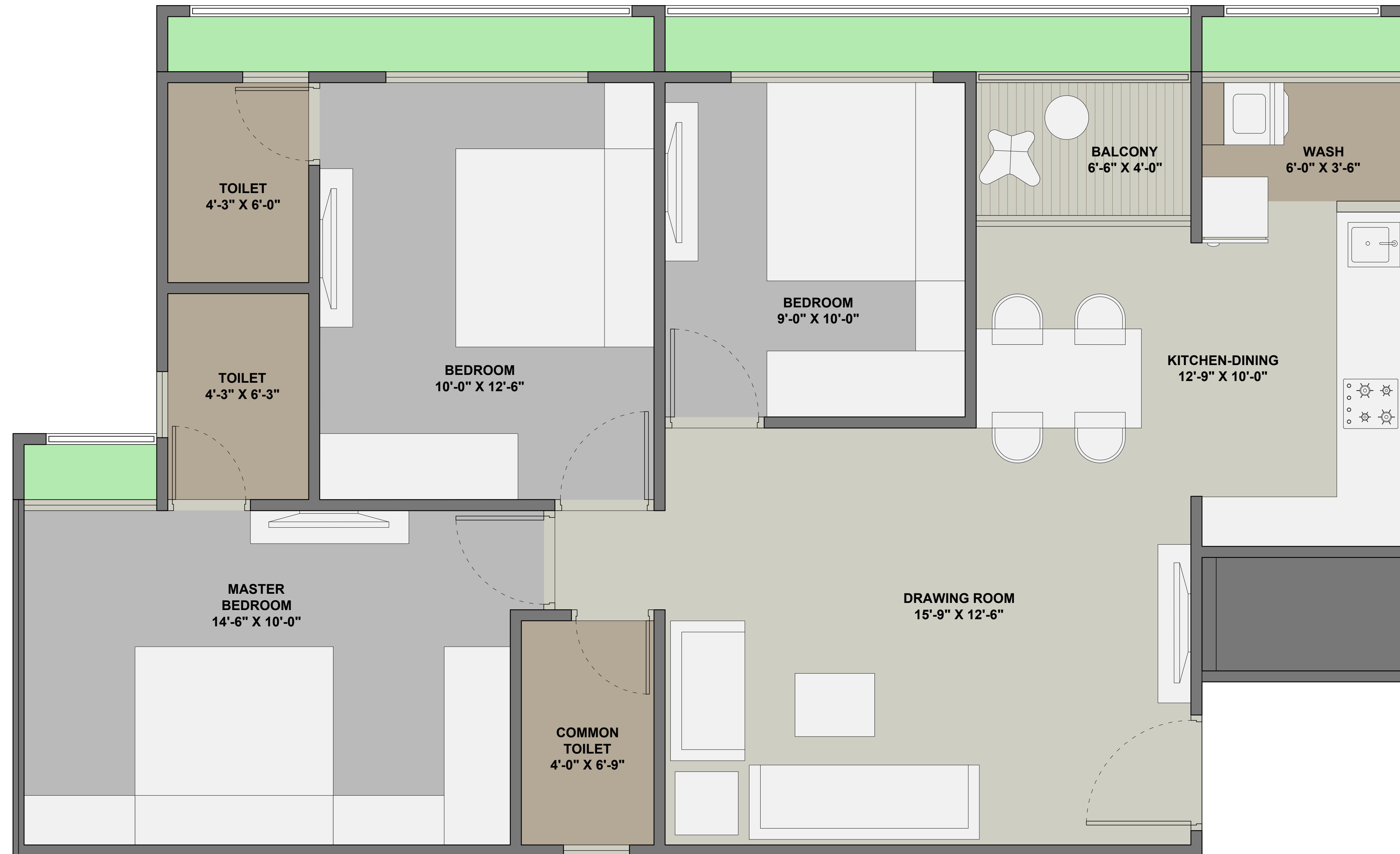
RESIDENTIAL APARTMENTS . GHUMA

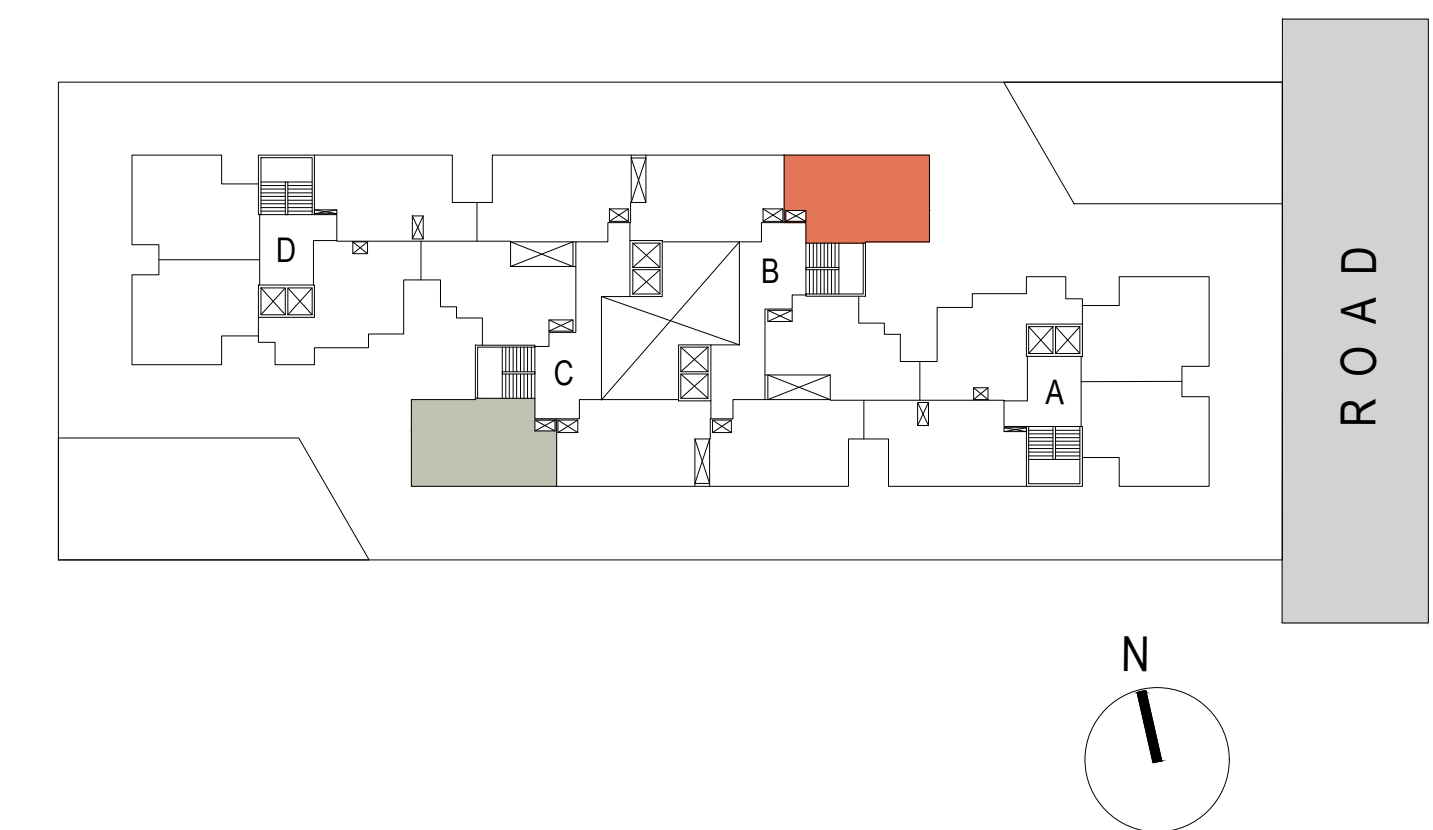
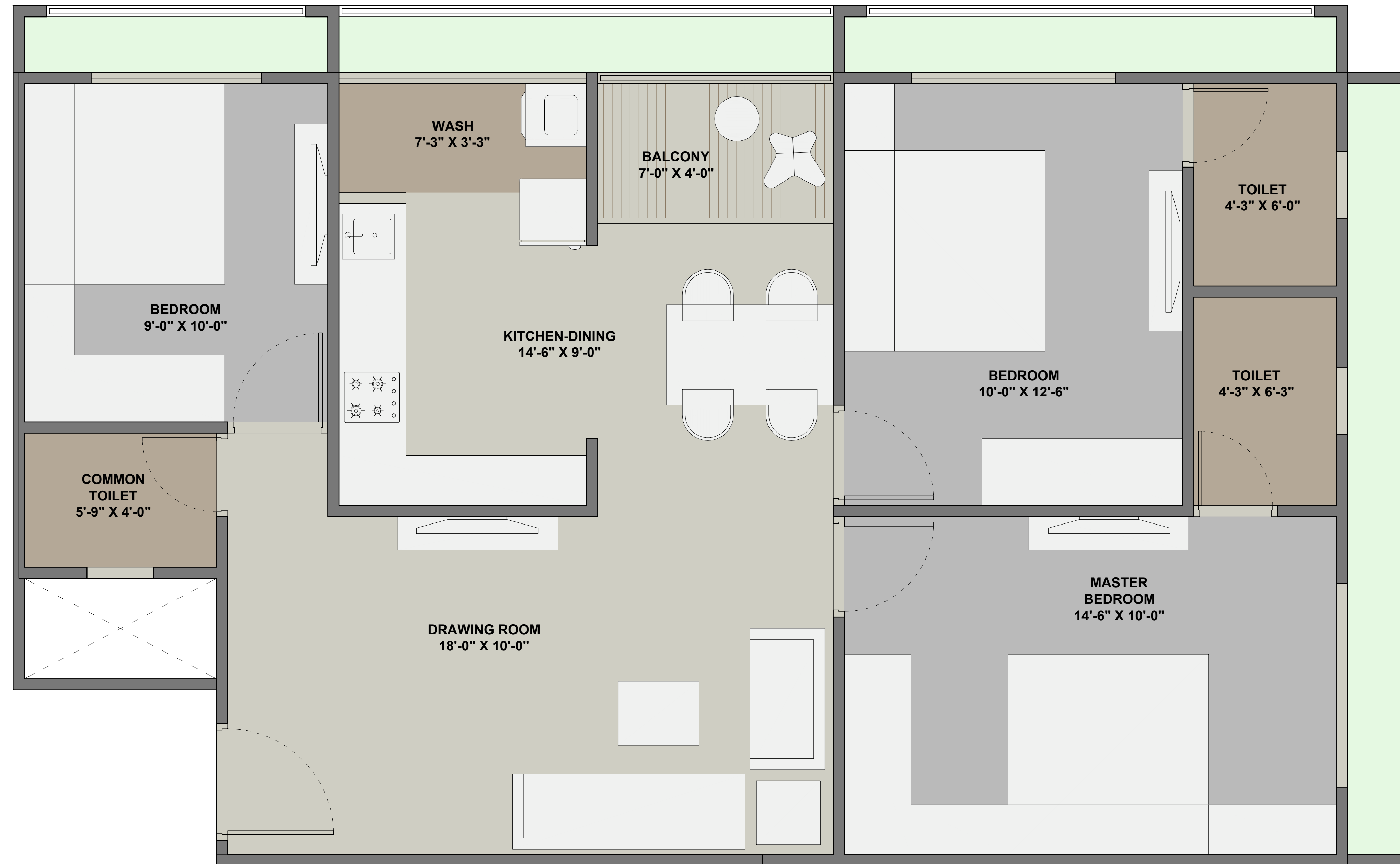


3BHK UNIT PLAN (BLOCK A & D) A 103, A 104, D 103, D 104

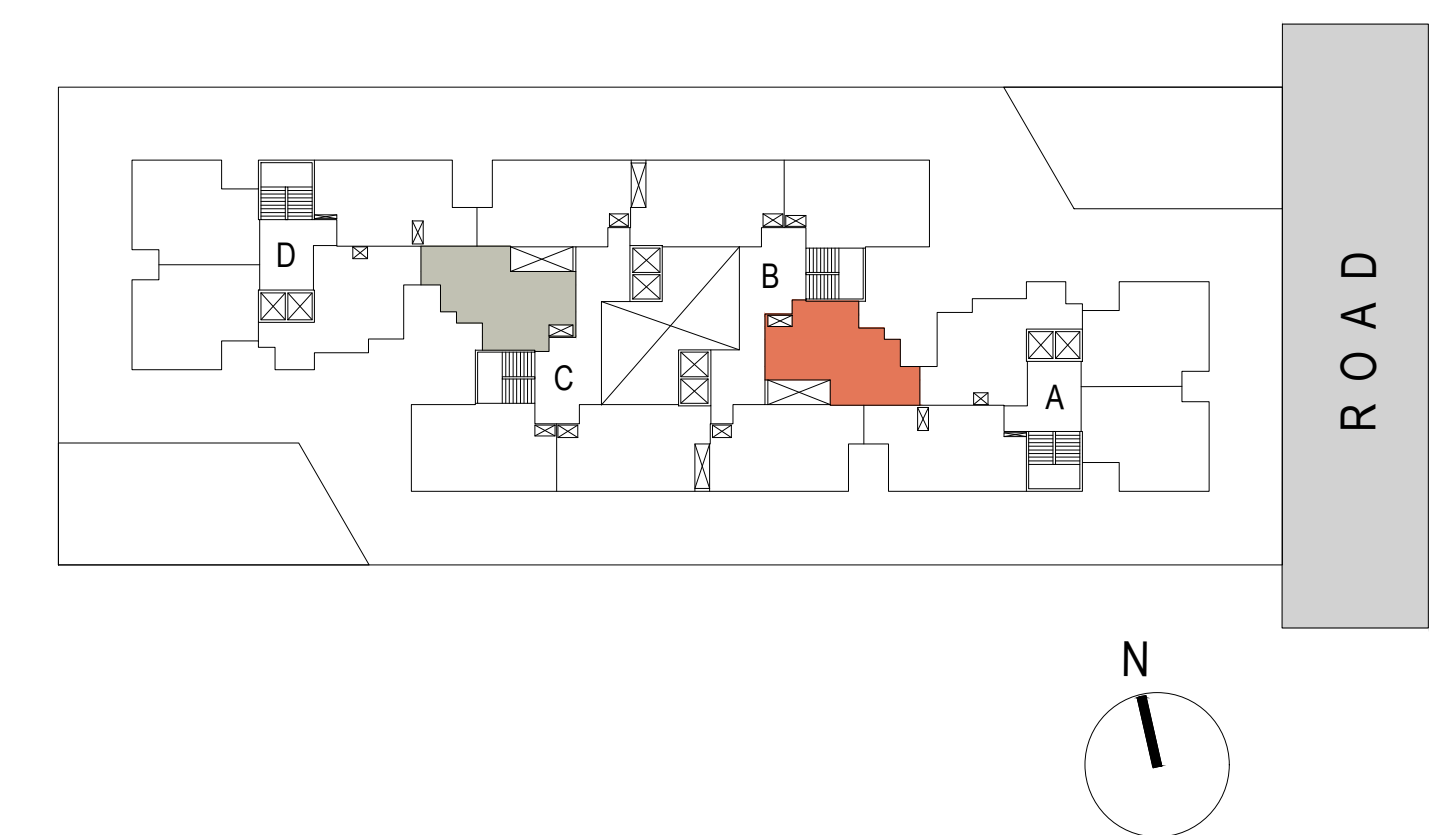
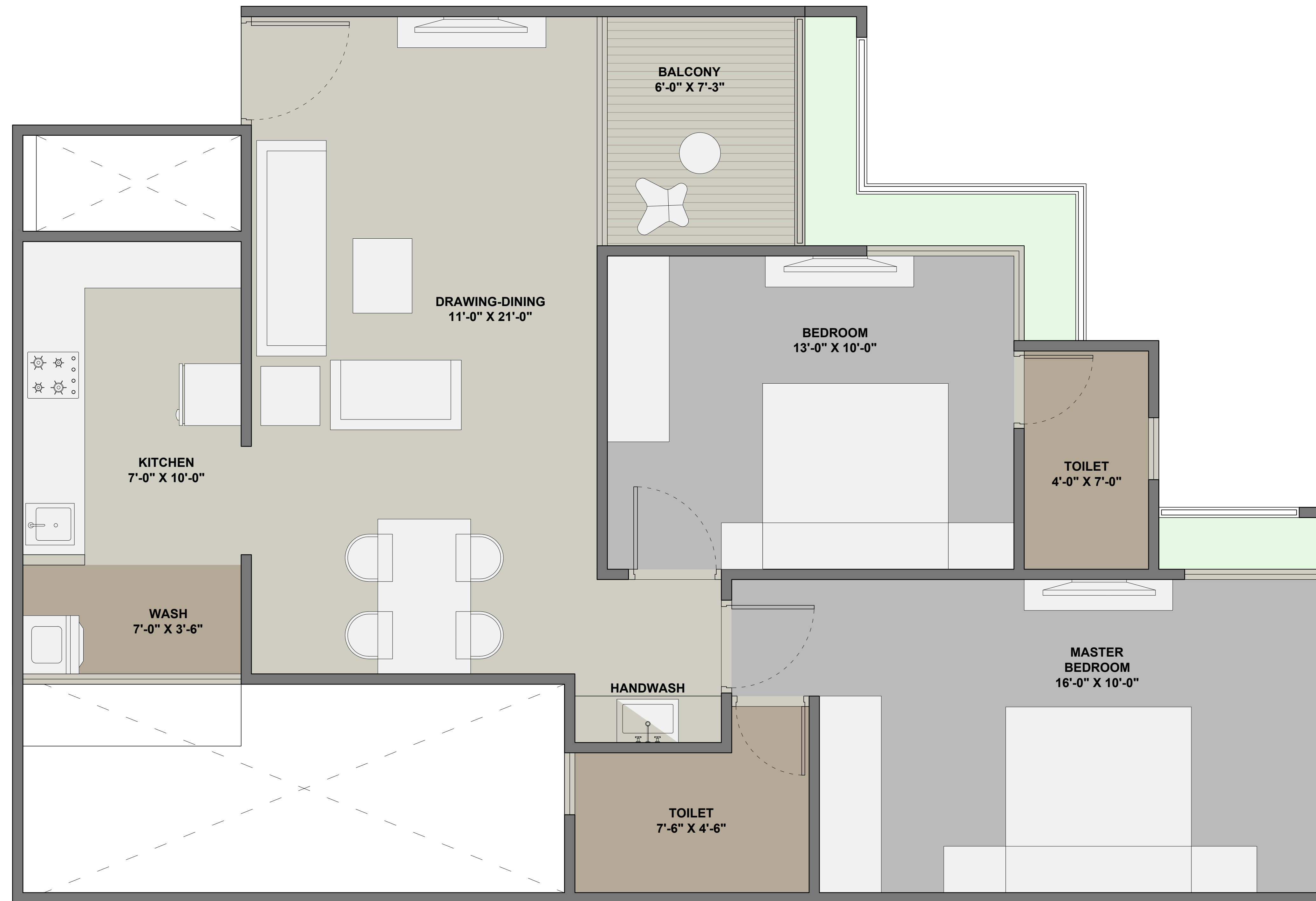








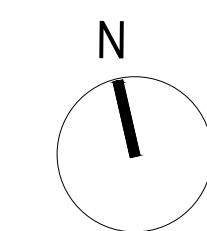
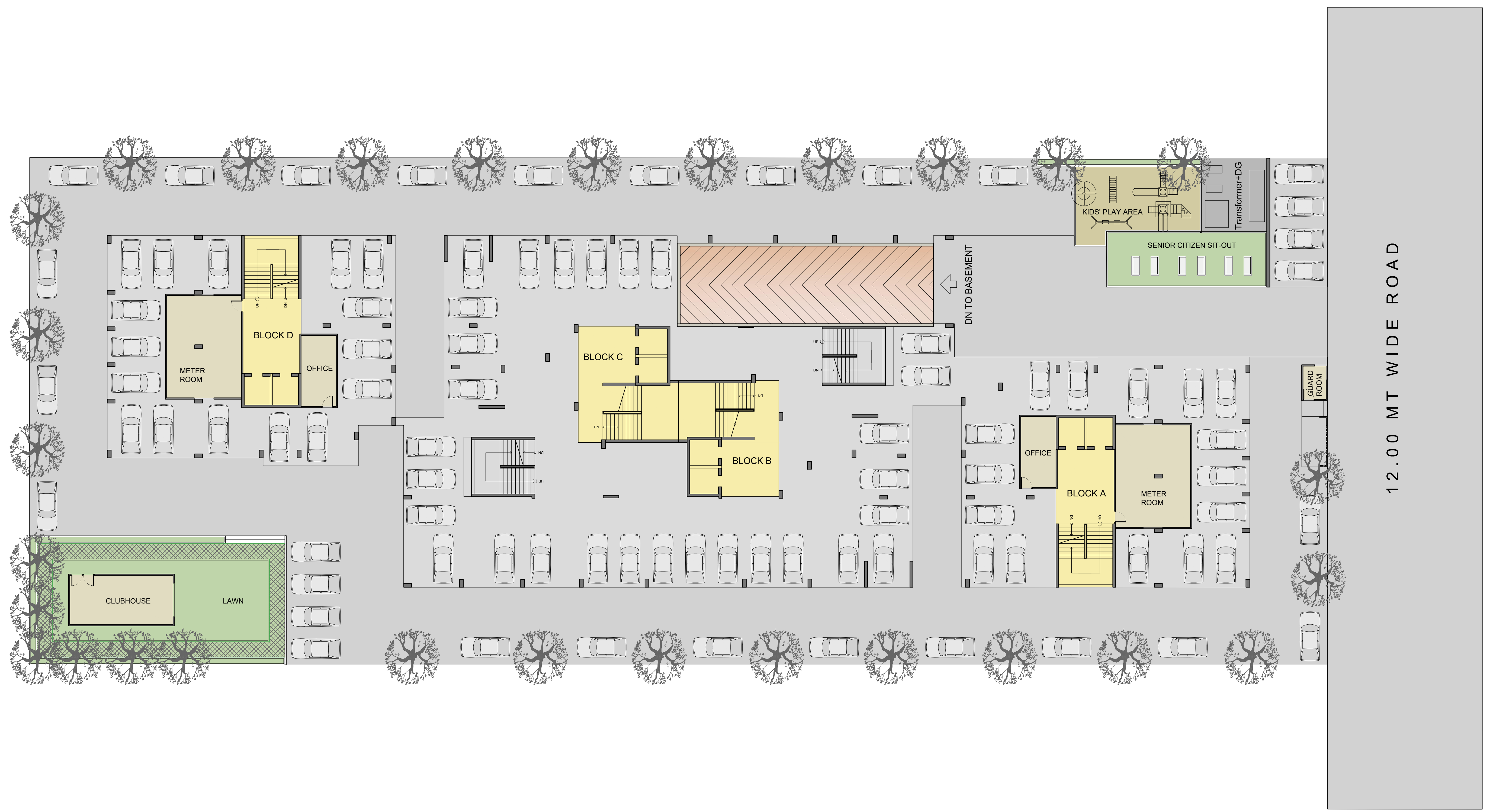
3BHK UNIT PLAN (BLOCK B & C) B 104, C 104





TYPICAL FLOOR PLAN

RESIDENTIAL APARTMENTS . GHUMA



GROUND FLOOR PLAN

RESIDENTIAL APARTMENTS . GHUMA

UNIT SPECIFICATIONS

Flooring:

- Vitrified flooring in living, dining and all bedroom
- Antiskid tiles in Balcony

Kitchen:

- Polished natural granite platform with stainless steel sink
- Glazed tiles dado up to lintel level on wall above kitchen platform
- Vitrified flooring in kitchen
- Kota stone in wash area with vitrified tile dado

Doors:

- Veneer finish main door with wooden frame and night latch lock
- Flush doors with good quality lock

Windows:

- Aluminum sliding windows with stone jambs

Bathrooms:

- Ceramic tile floor and dado up to lintel level in all bathroom
- Cera or any equivalent sanitary ware
- Conceal flush tank / flush valves
- Jaquar or any equivalent CP fittings
- Supreme or any equivalent make corrosion free & leak proof CPVC/UPVC pipe fitting

Electrification:

- Single phase concealed ISI copper wiring with modular switches
- Adequate points for AC in living & bedrooms, geyser point in bathroom and TV & Telephone point in living room

Wall Finish:

- Internal smooth finished mala plaster with putty
- Exterior double coated sand faced plaster / texture & acrylic paint over it

Elevator:

- Premium quality 2 automatic elevators

SALIENT FEATURES

- Well designed entrance foyer
- Common area under CCTV surveillance
- Fire hydrant system in every block
- Provision for satellite connection
- All internal roads of RCC / pattern designed stone paving
- Well planted complex with landscape garden
- Earmarked space for AC outdoor units
- Power backup for common utilities
- 1 level of basement parking
- One free allotted car parking

COMMON AMENITIES

- Indoor games
- Security cabin
- Gazebo/Outdoor sitting
- Gymnasium
- Children play area
- Community hall / Society Office
- Landscaped garden
- Party lawn
- Drop off zone
- Walling track
- Sitting lounge space
- Common toilet
- Developed common terrace with amenities

sāanvi
nirman

ESTELLA

3 BHK LIVING SPACES

Architect-

FLXBI

Developer Name : Buildwise Construction LLP

Address :

301, 3rd Floor, Binali Complex,
Opp. Torrent Power Limited, Naranpura,
Ahmedabad – 380 013.
+91-97277-01464