

SAIGREEN
VELLY 3



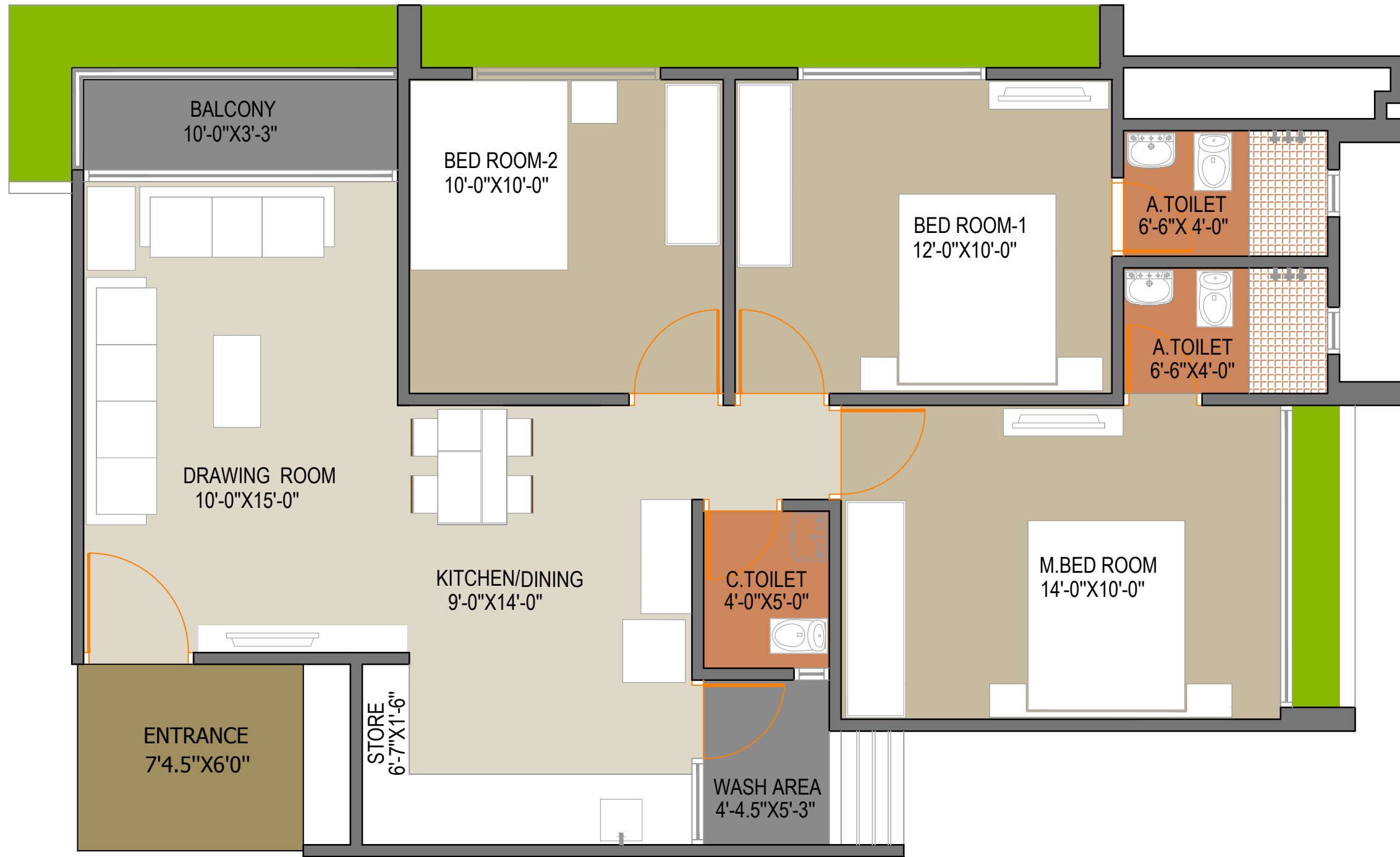
GROUND FLOOR PLAN



1 ST TO 11 TH, FLOOR PLAN



12 TH FLOOR PLAN



THREE BHK UNIT PLAN

BLOCK-A



TWO BHK UNIT PLAN

BLOCK-B,C,D

Specifications

Structure

- Earthquake resistant frame structure
- Meticulously planned & sophisticated elevation by leading architects.

Plaster

- Smooth cement finish / mala plaster all inside the house
- Double coat sand faced plaster on exterior walls

Flooring

- Vitrified tiles or rustic flooring combinations for all rooms
- Kota stone flooring in utility area
- Paver floor in parking area
- China mosaic floor in terrace to resist heat & leakage

Kitchen

- Polished granite in platform with SS Sink
- Designer tiles cladding up till Lintel Level
- Enough light points for electrical appliances

Electrical

- Ample electrical points in all areas
- ISI copper wire
- Energy efficient green lighting concept

Doors & Windows

- Main door with wooden frames & flush door with standard fittings
- Fully glazed powder coated aluminum sliding window

Bathrooms

- Designer tiles up to Lintel Level in all toilets
- Standard quality bath fittings
- Corrosion free, Leak-proof "C" PVC pipe & fitting
- SWR drainage systems

Paints

- All inner walls immaculately finished with putty
- All exterior walls with long-lasting acrylic paint of standard make

SAIGREEN VELLY 3

Developer
Rudransha Green LLP

Structure Consultant
Pokar Girishbhai Vitthalbhai

Site Address:
Sai Green Valley 3,
Near Sai Green Valley 2, behind Vibhusha Bungalows
Behind Kabir Enclave, Ghuma,
Ahmedabad-380058

Gujarat RERA Website: <https://gujrera.gujarat.gov.in>
RERA Registration No. _____