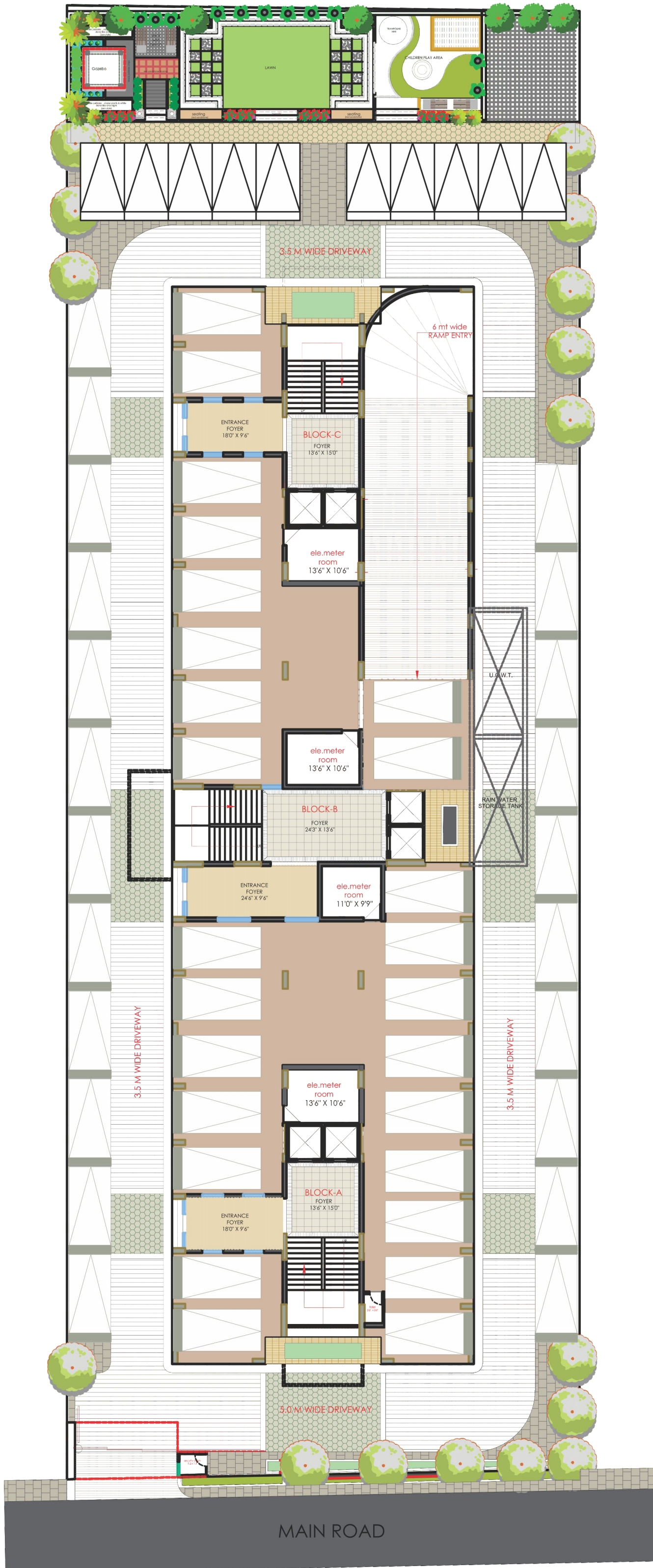




SEVENTH
YASH



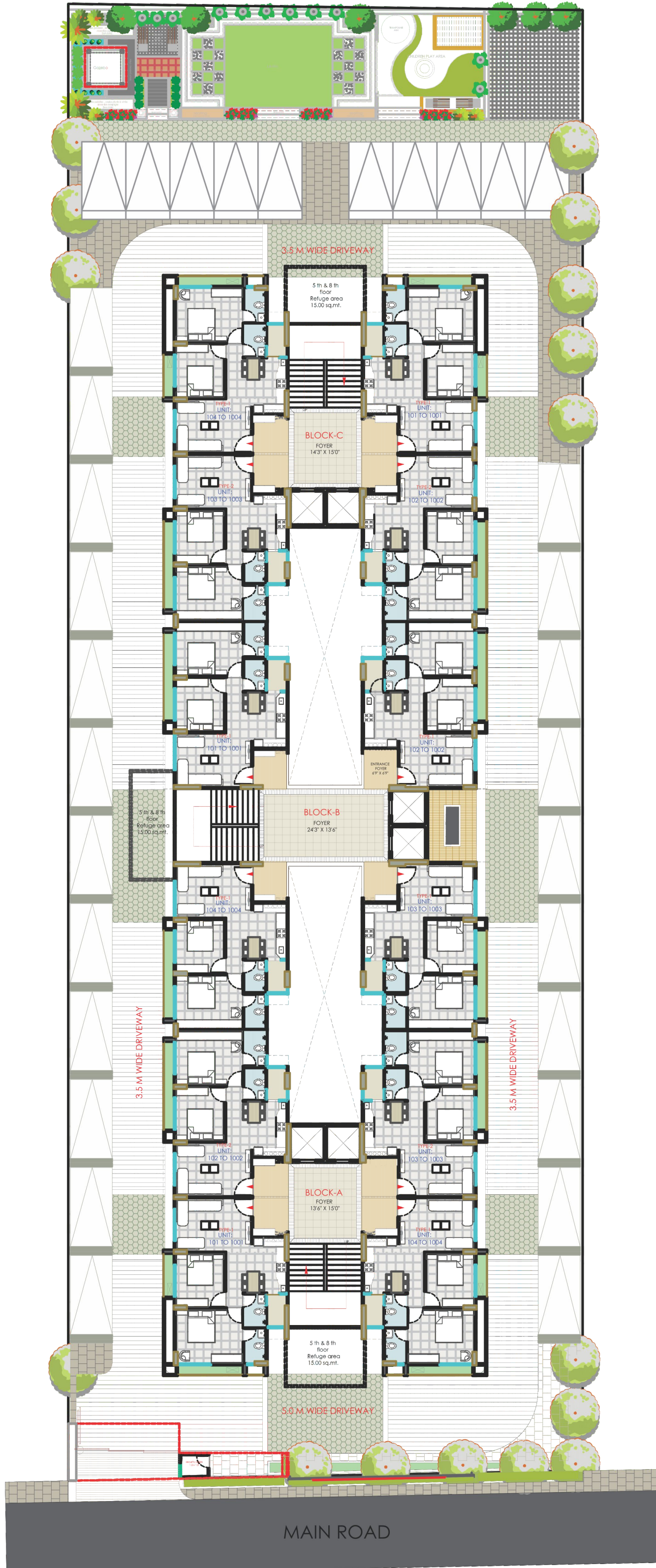
GOTA



GROUND FLOOR



MAIN ROAD



TYPICAL FLOOR

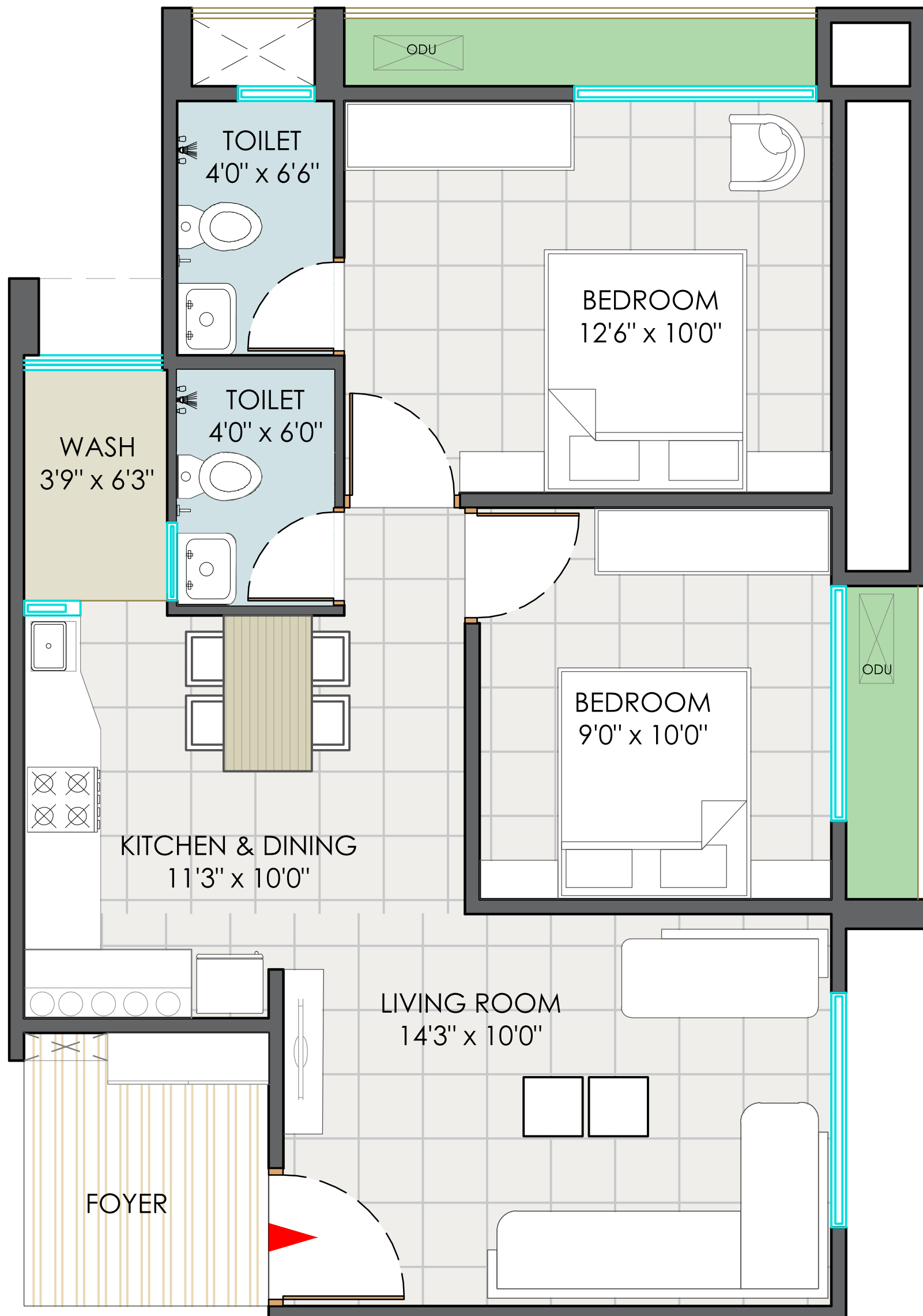


MAIN ROAD

UNIT PLAN
TYPE 1



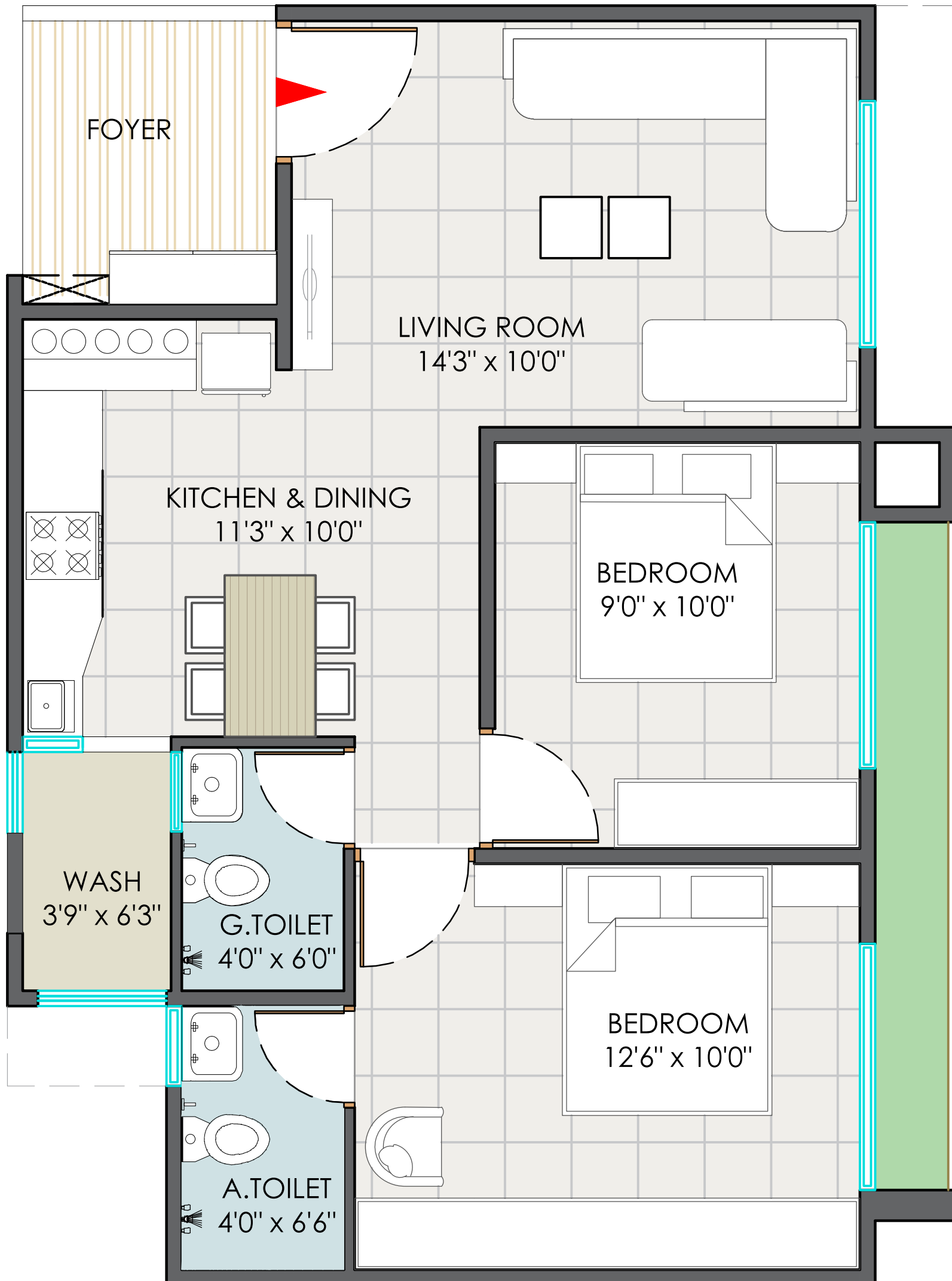
CARPET AREA : 49.64 SQ. MTR
WASH AREA : 02.00 SQ. MTR



UNIT PLAN
TYPE 2



CARPET AREA : 49.84 SQ. MTR
WASH AREA : 02.00 SQ. MTR



S P E C I F I C A T I O N

STRUCTURE

- RCC Structure designed with Earthquake resistant frame

FLOORING

- Vitrified flooring in complete apartment
- Designer tiles in Bathrooms and Utility area
 - Lobby with Vitrified tiles and Granite
 - Lift wall cladding in Stone / Tiles
- Lift Standard Company Omega , Express Equivalent

ELECTRIFICATION

- Modular switches
- ISI wires, MCB and ELCB

KITCHEN

- Stainless steel sink (S.S. Sink)
 - Dado tiles
 - Granite Platform

DOORS

- Main Door - Modular/Flush Doors with both side laminated and wooden frame
- Other Doors -Modular/Flush Doors with both side paint with wooden frame

WINDOWS

- Sliding Aluminum windows with powder coating
- Natural Stone frames on window jambs

TOILETS/BATHROOMS

- Concealed Plumbing
 - Health Faucet
- Wall design Glazed / Ceramic Tiles up to Lintel Level
 - Stone frames for Bathrooms
- CP Fittings: Jaguar, Cera or equivalent

FIRE PREVENTIVE MEASURES

- Entire design comprises of the Internal Building Code (IBC)
 - Automatic fire sprinklers installed in the Hollow Plinth
- Manual panic alarm provided on each floor for fire safety



SEVENTH YASH

SEVENTH YESH , NR. KAUSHALAM RESIDENCY
OPP. POPULAR PARADISE, GOTA, A'BAD, GUJARAT 382481

☎ 82383 92750 ✉ seventhyash2021@gmail.com

🌐 www.seventhgroup.co.in

PROJECT BY



ARCHITECT


EARTH
CREATION
ASHISH PANCHAL
+91 816-0279863

STRUCTURE


CONSULTING ENGINEERS
NIKITA PARIKH
+91 99744 53555

RERA REGISTER NO.

RERA WEBSITE : WWW.GUJRERA.GUJARAT.GOV.IN