

A PROJECT BY



THE SPARKLING LIFE

EMERALD

5 BHK ABODE CRAFTED BY SHALIGRAM



DEVELOPER
PRASHANTI CORPORATION

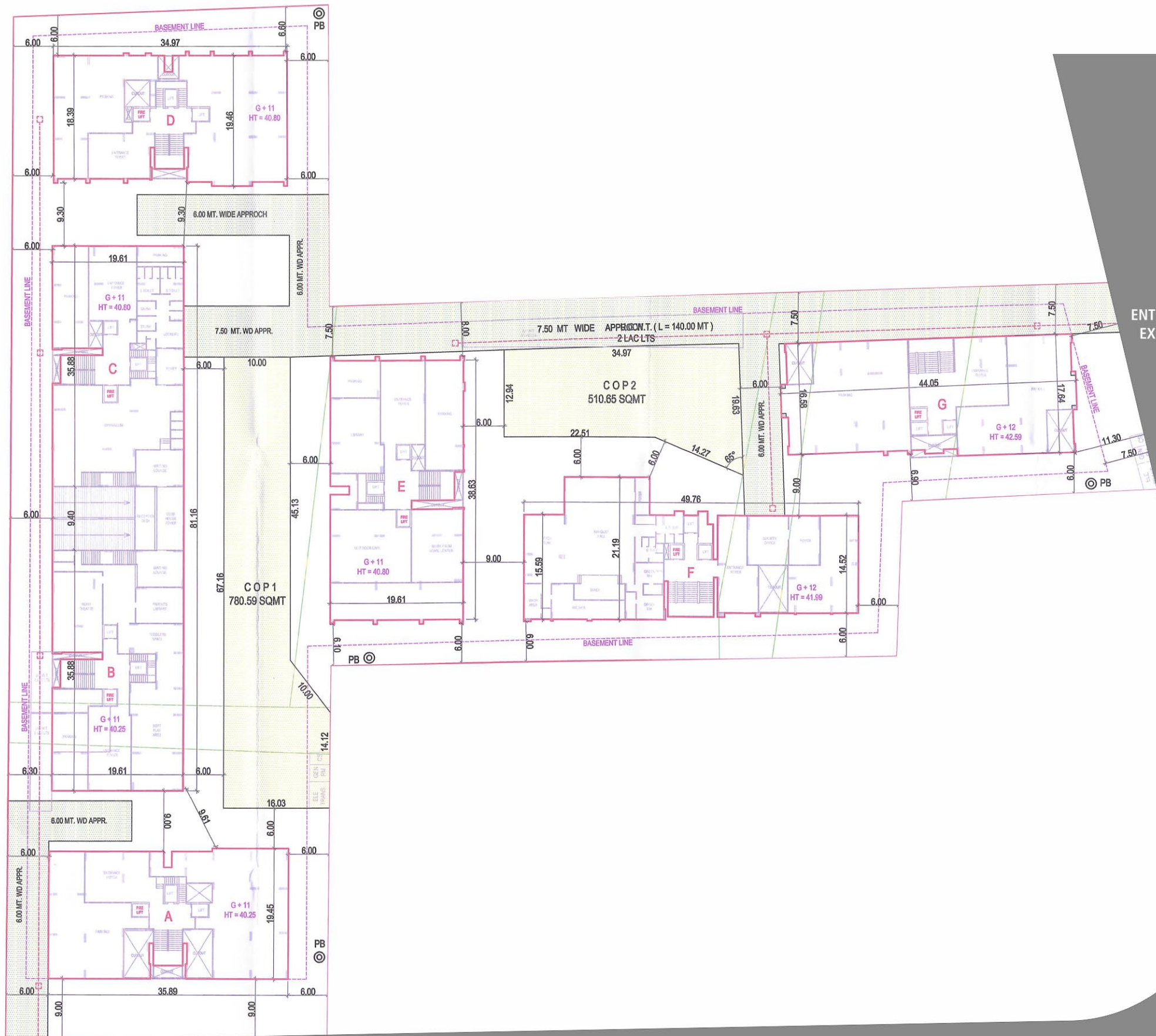
ENTRANCE GATE





THE SPARKLING LIFE
EMERALD
5 BHK ABODE CRAFTED BY SHALIGRAM





ENTRY/
EXIT

SHAHEED SMARAK RD. 24 M. WIDE DRIVEWAY

ENTRY/
EXIT

TOWARDS AIRPORT

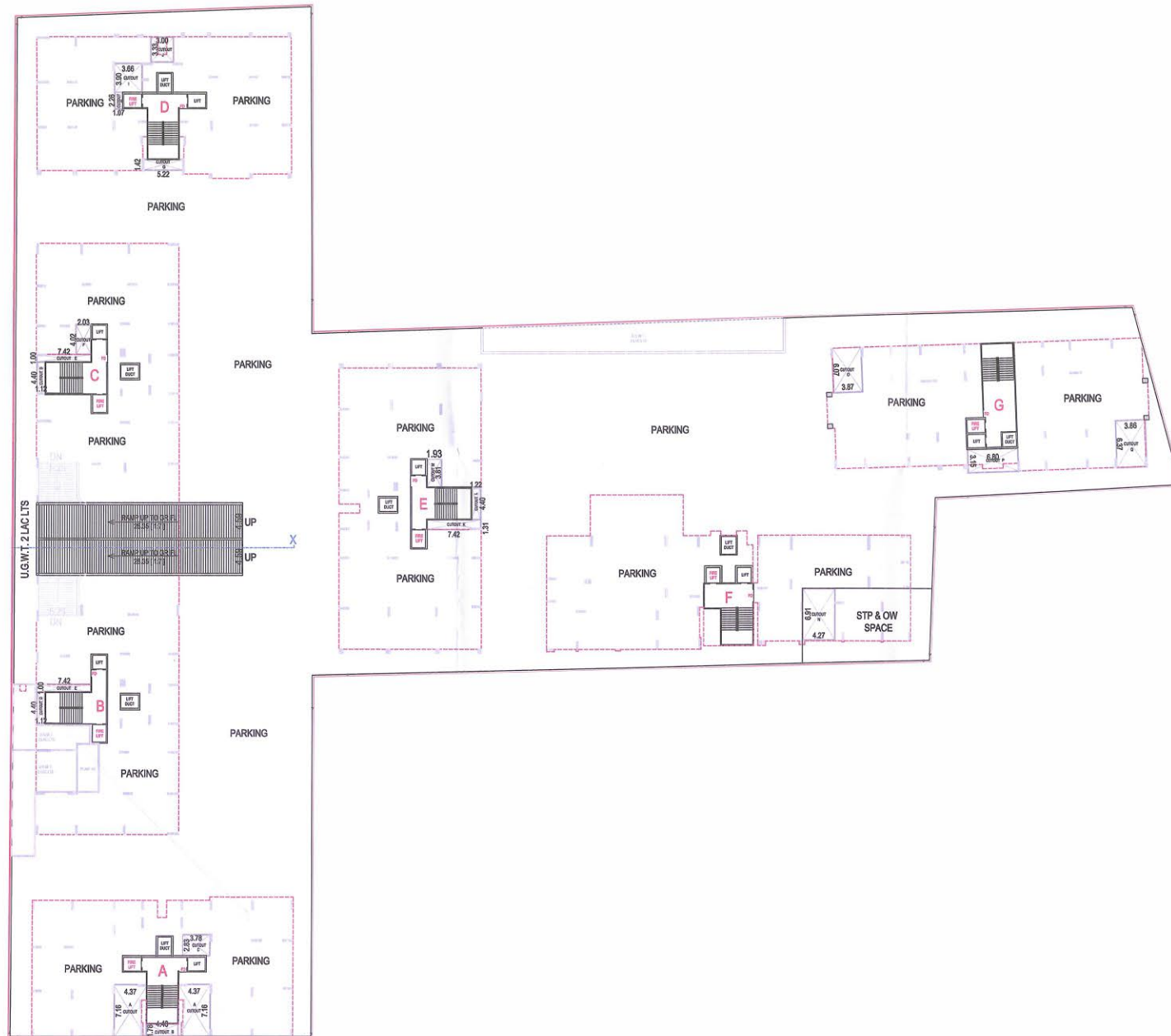
45 M. WIDE DRIVEWAY

VIP ROAD



GROUND FLOOR PLAN

**Draft under review



UPPER BASEMENT

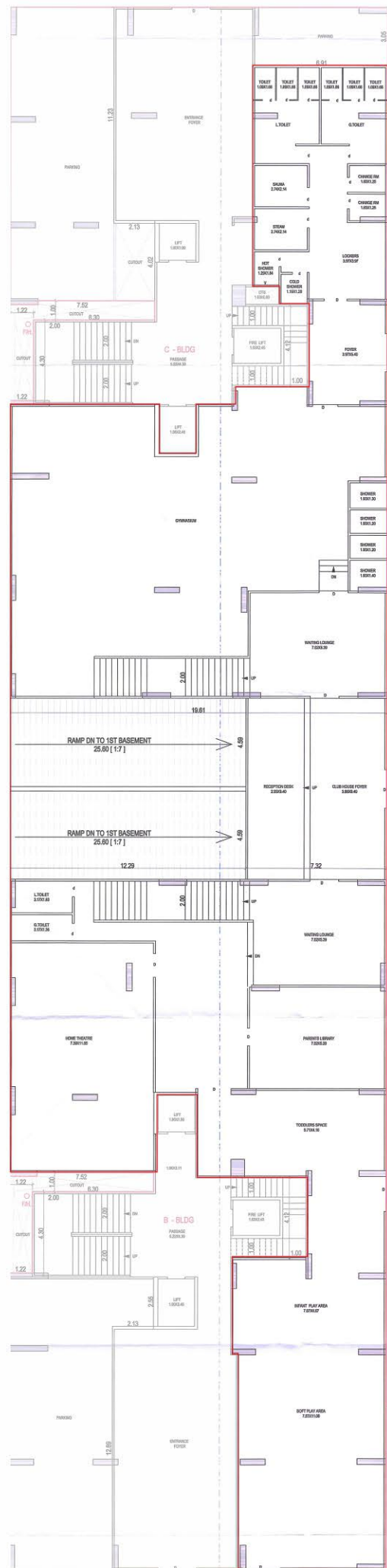


LOWER BASEMENT



BASEMENT PLAN

*# Draft under review



GROUND FLOOR PLAN

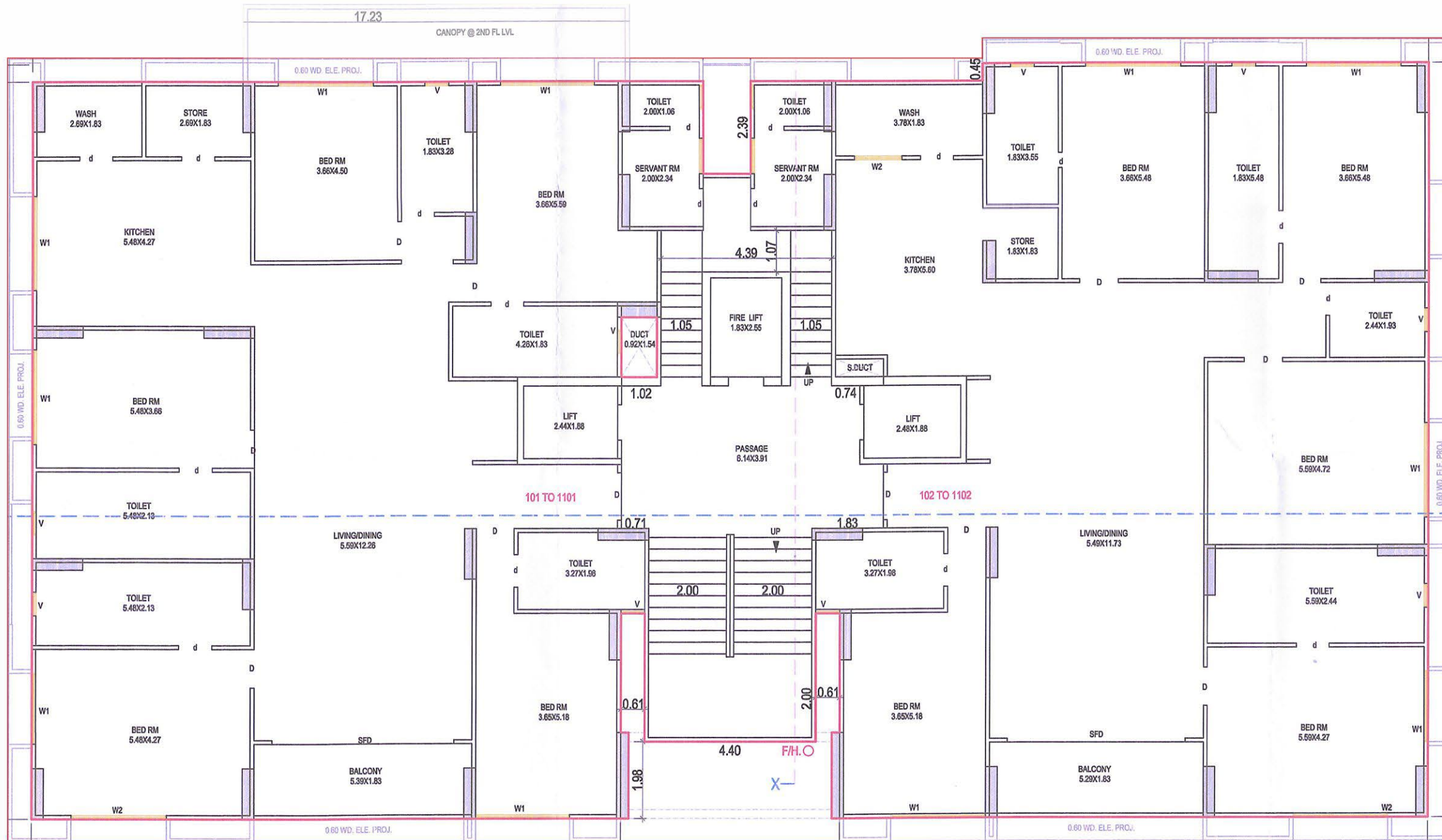


FIRST FLOOR PLAN



CLUB AMENITIES

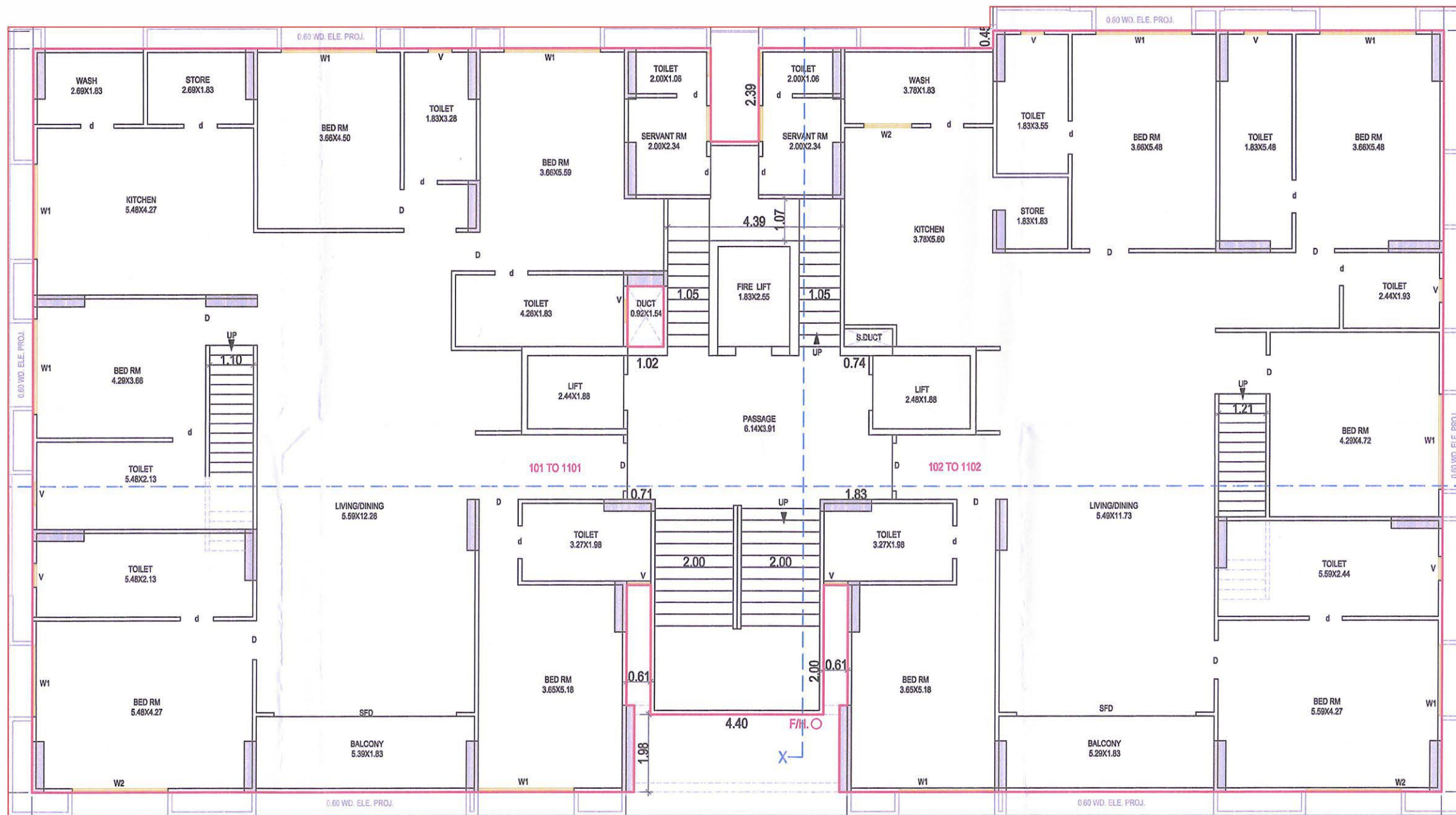
*# Draft under review



1st to 10th FLOORS

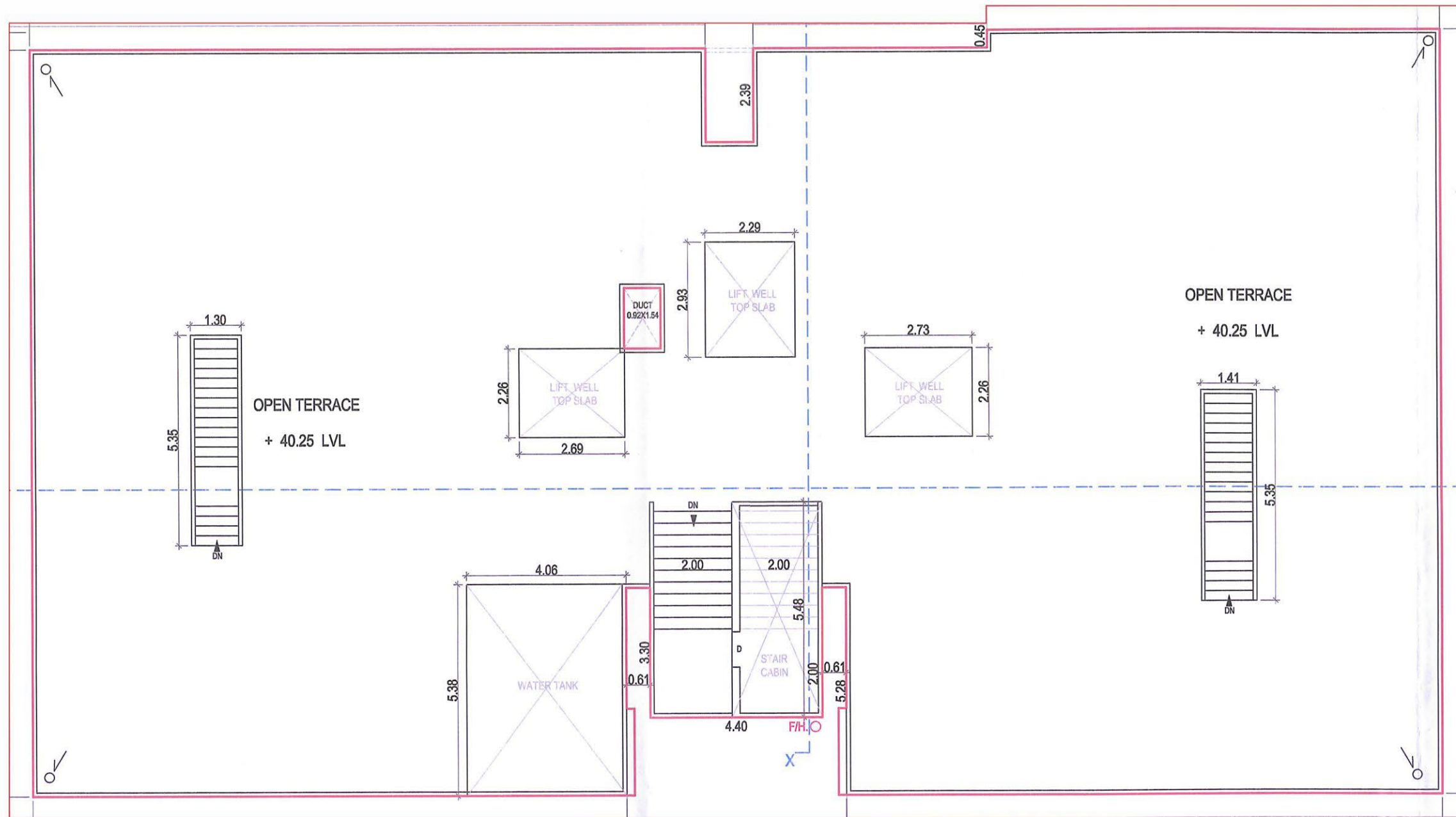
TYPICAL FLOOR PLAN
BUILDING A

*# Draft under review



11th FLOOR

TYPICAL FLOOR PLAN
BUILDING A
 *# Draft under review



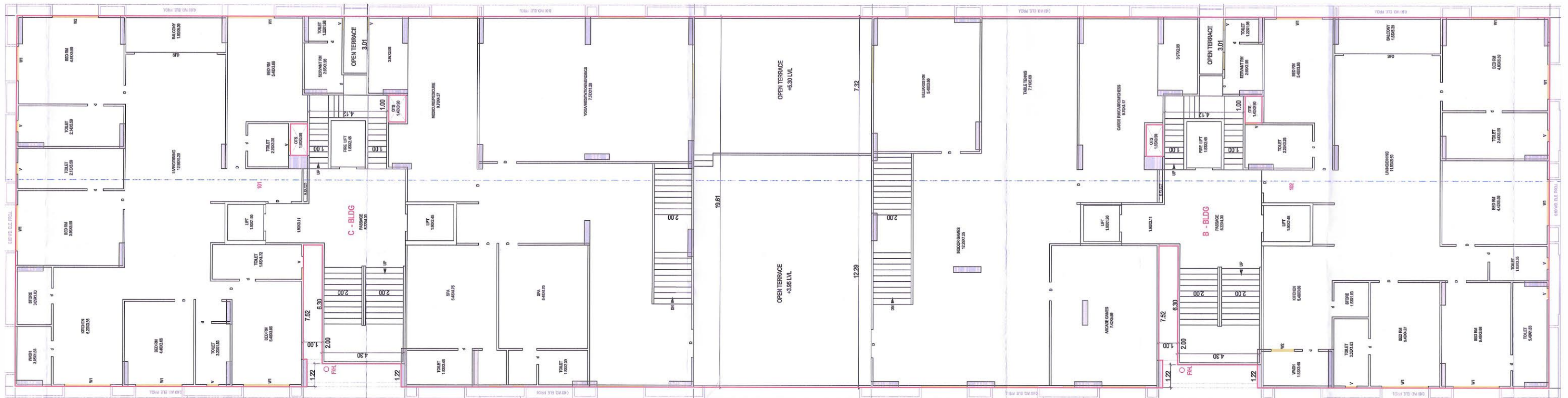
TERRACE PLAN



TYPICAL FLOOR PLAN

BUILDING A

*# Draft under review

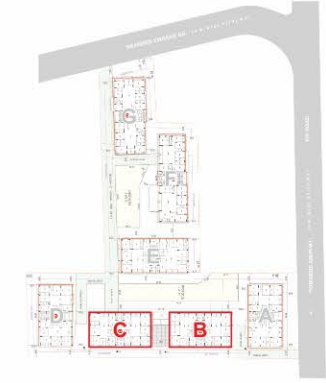


1st FLOOR



TYPICAL FLOOR PLAN
BUILDING B & C

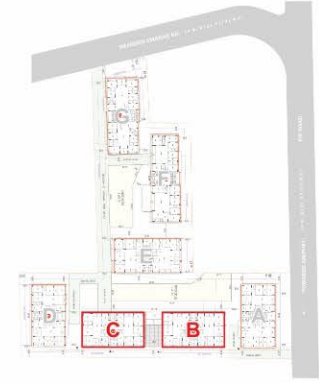
*# Draft under review



2nd to 10th FLOORS

TYPICAL FLOOR PLAN
BUILDING B & C

** Draft under review

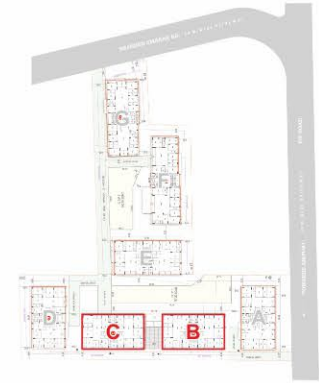
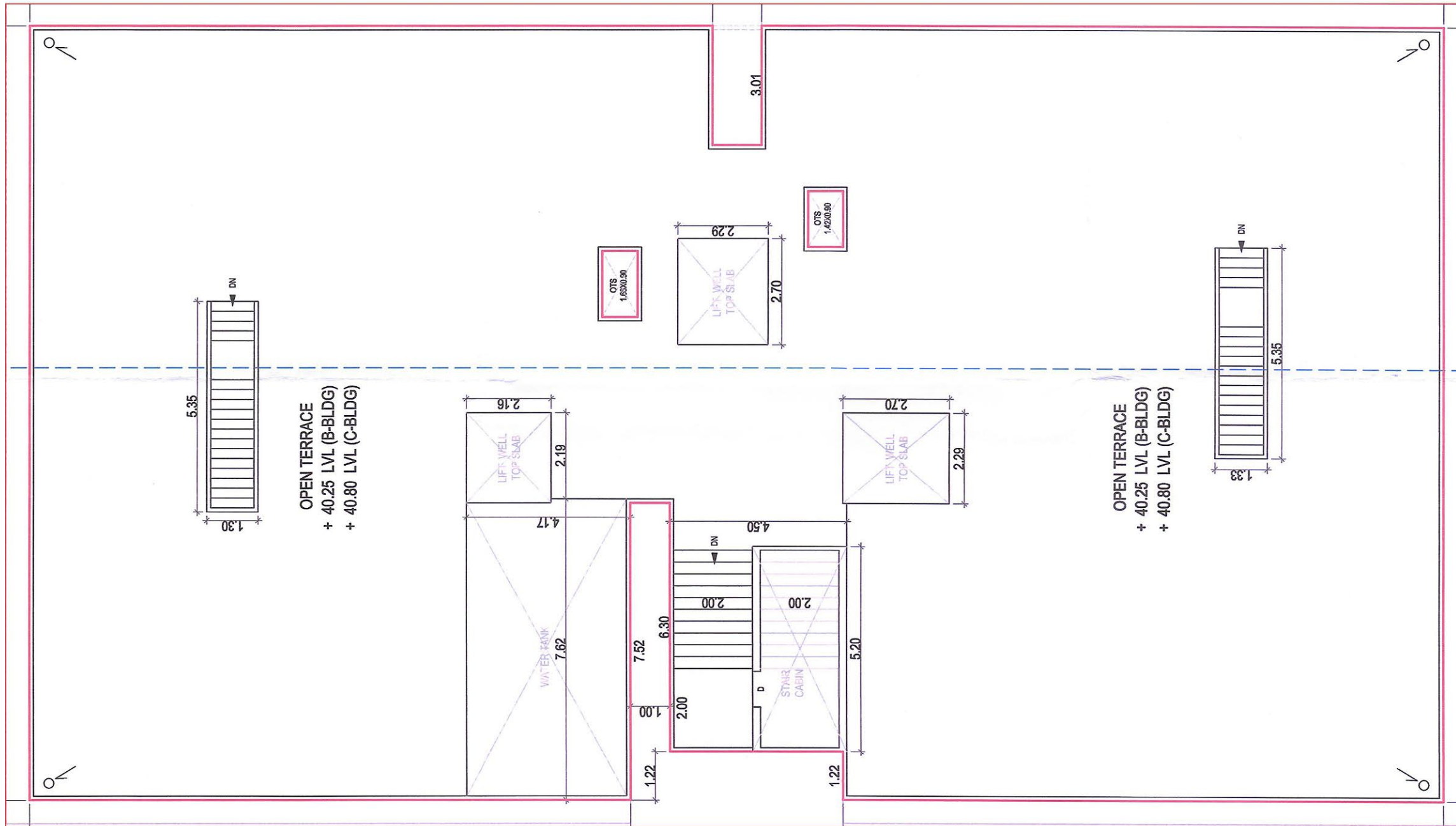


11th FLOOR

TYPICAL FLOOR PLAN

BUILDING B & C

** Draft under review

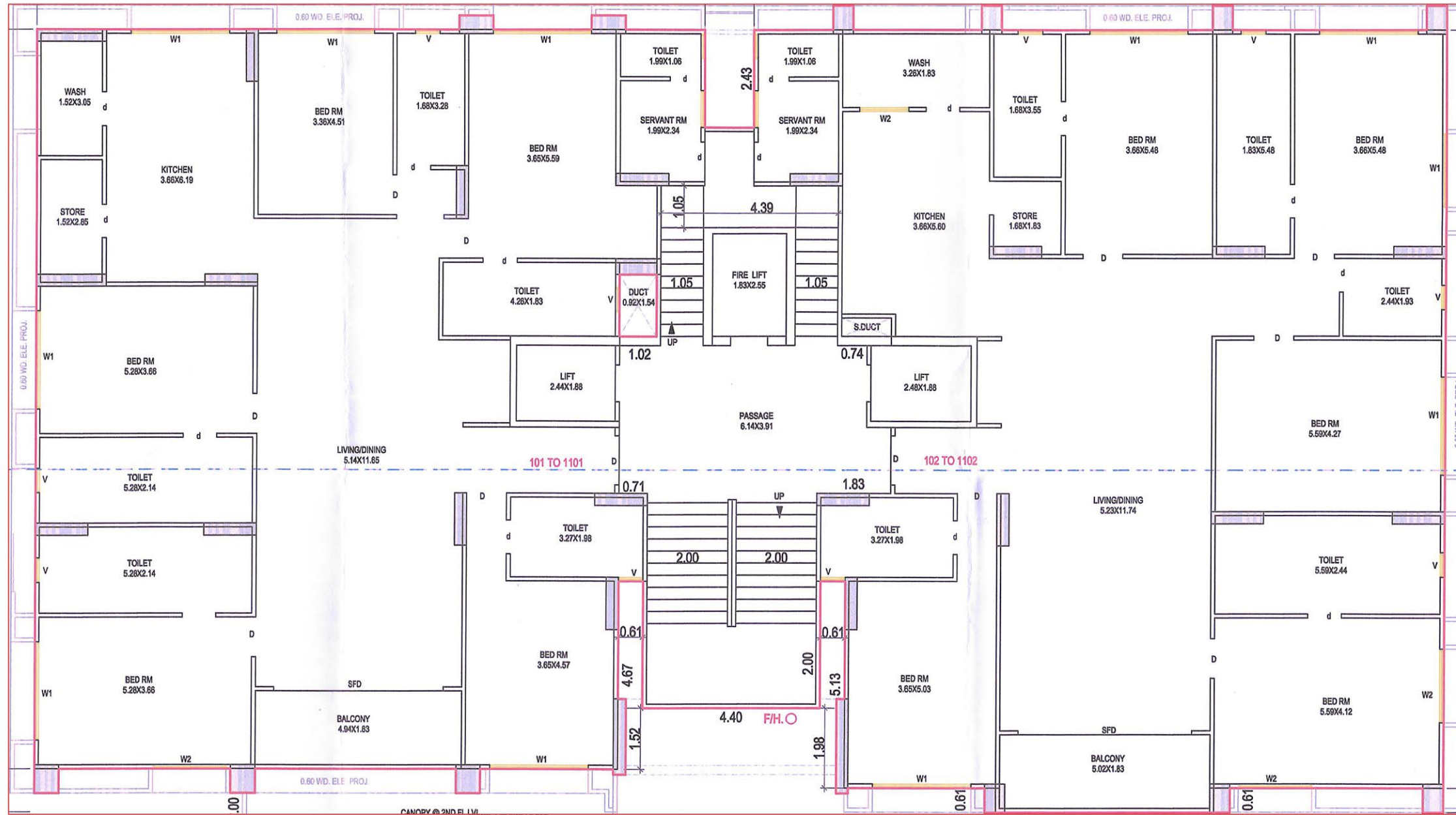


TERRACE PLAN

TYPICAL FLOOR PLAN

BUILDING B & C

** Draft under review

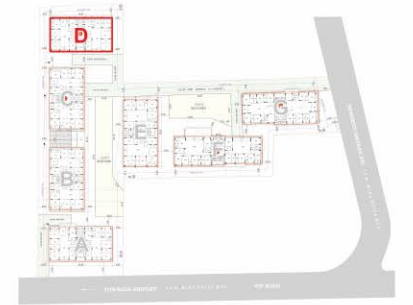
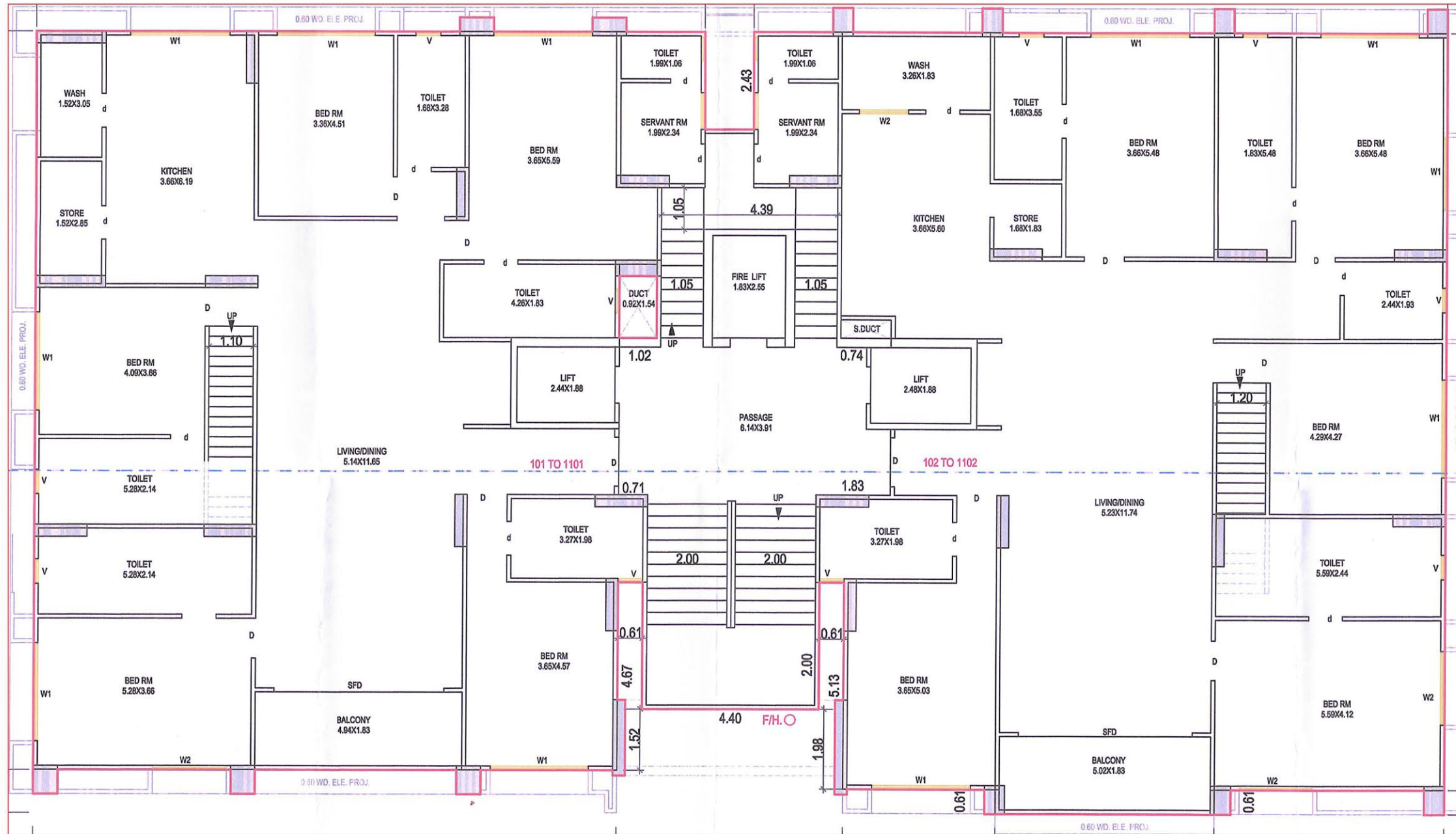


1st to 10th FLOORS



TYPICAL FLOOR PLAN
BUILDING D

*# Draft under review



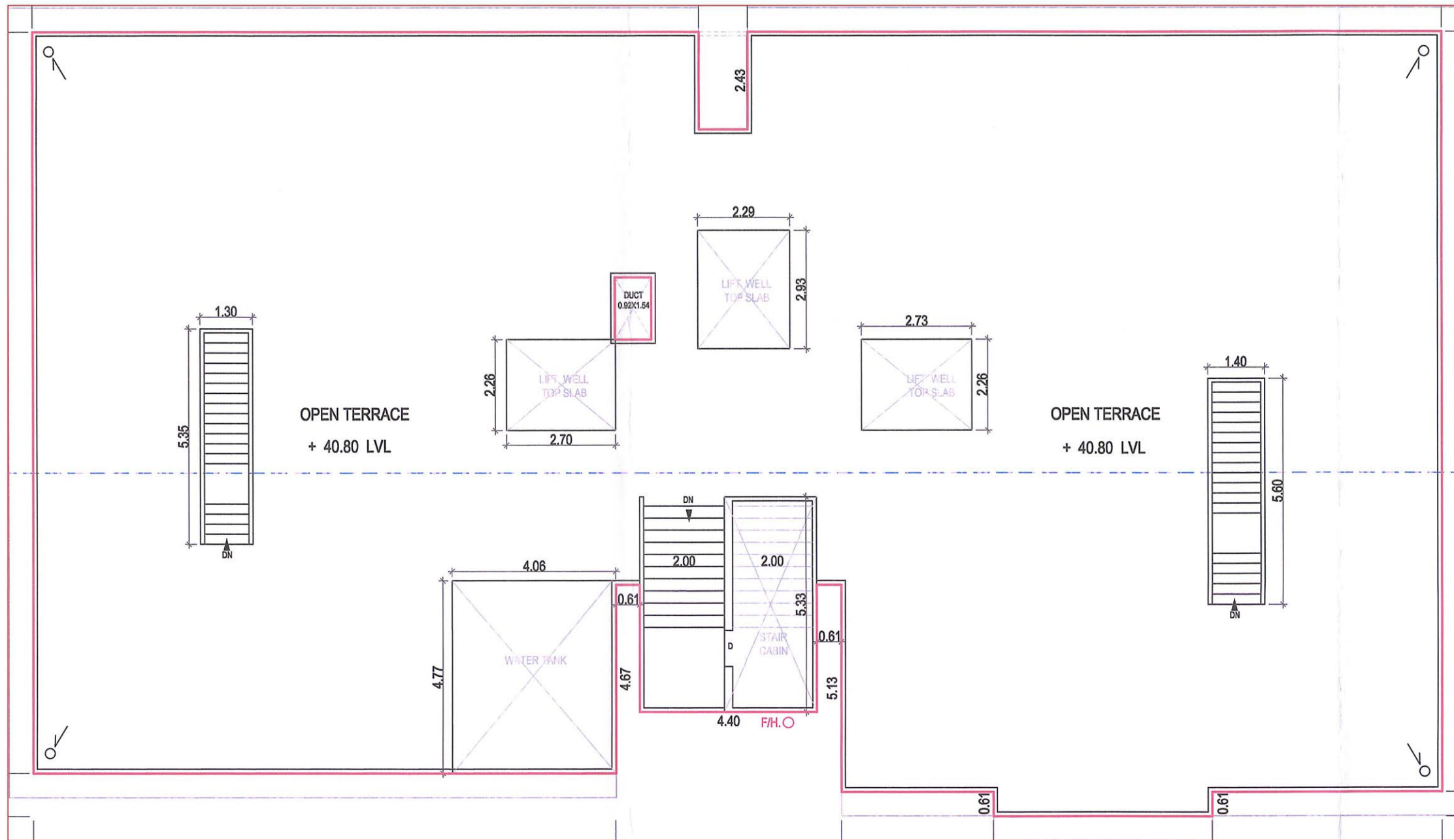
11th FLOOR



TYPICAL FLOOR PLAN

BUILDING D

*# Draft under review

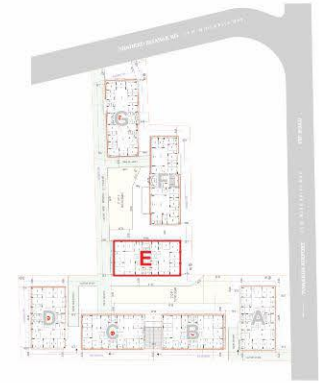


TERRACE PLAN



TYPICAL FLOOR PLAN
BUILDING D

*# Draft under review

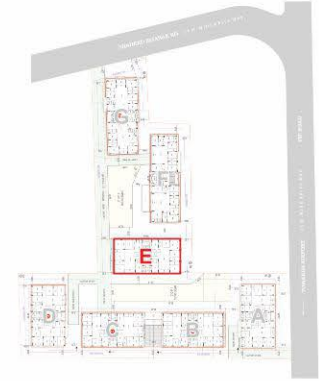


1st to 10th FLOORS

TYPICAL FLOOR PLAN

BUILDING E

*# Draft under review

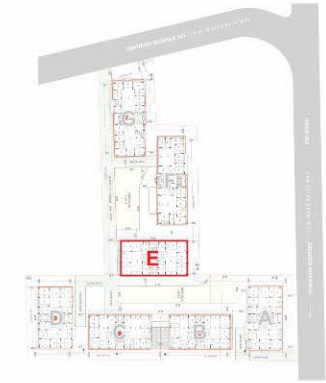
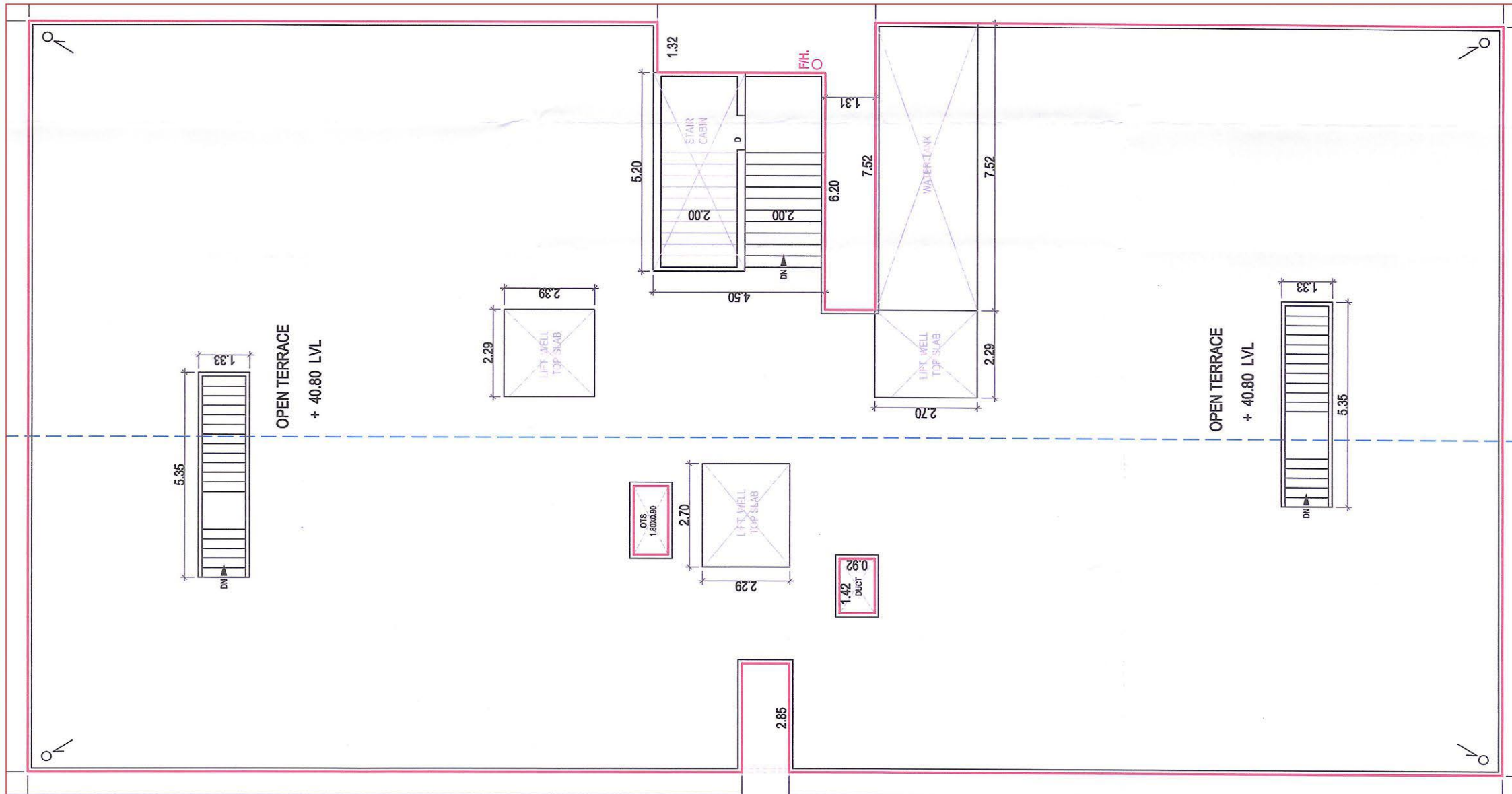


11th FLOOR

TYPICAL FLOOR PLAN

BUILDING E

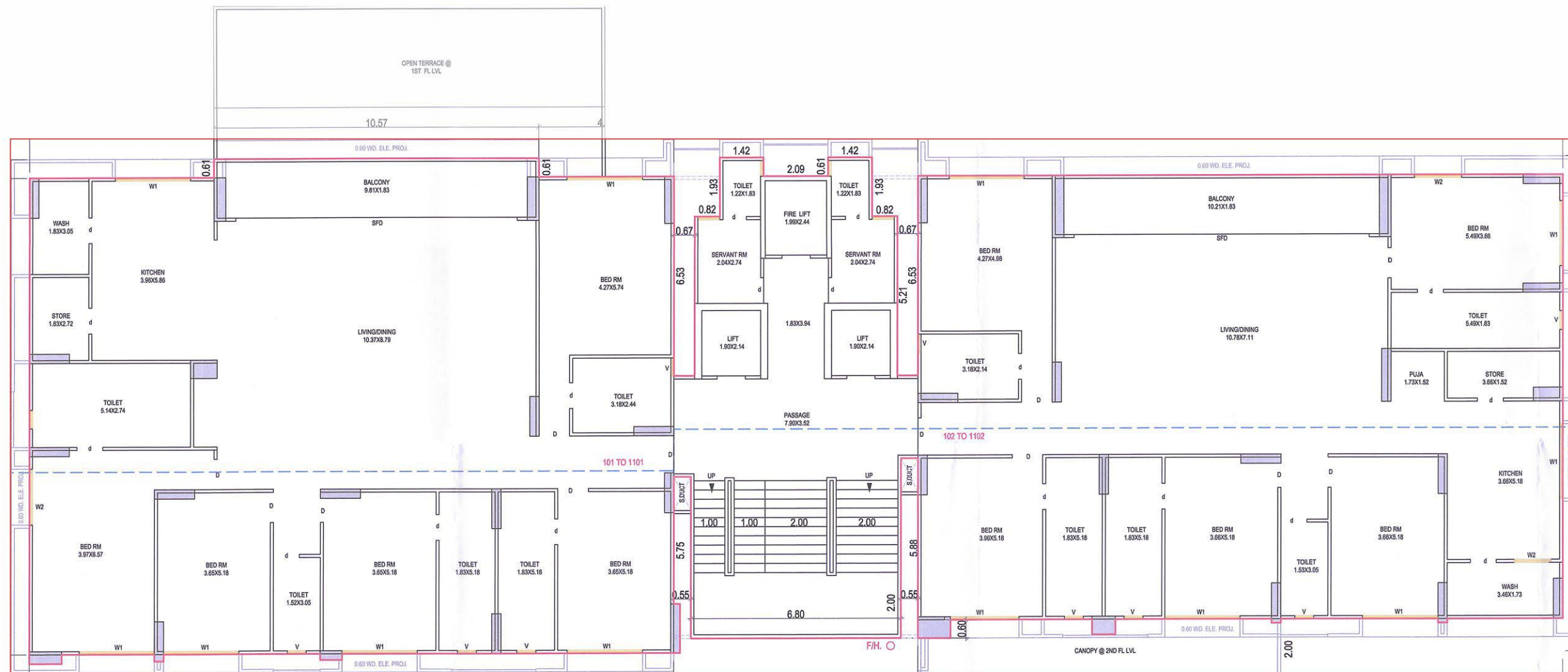
*# Draft under review



TERRACE PLAN

BUILDING E

*# Draft under review



1st to 11th FLOORS



TYPICAL FLOOR PLAN
BUILDING F

*# Draft under review



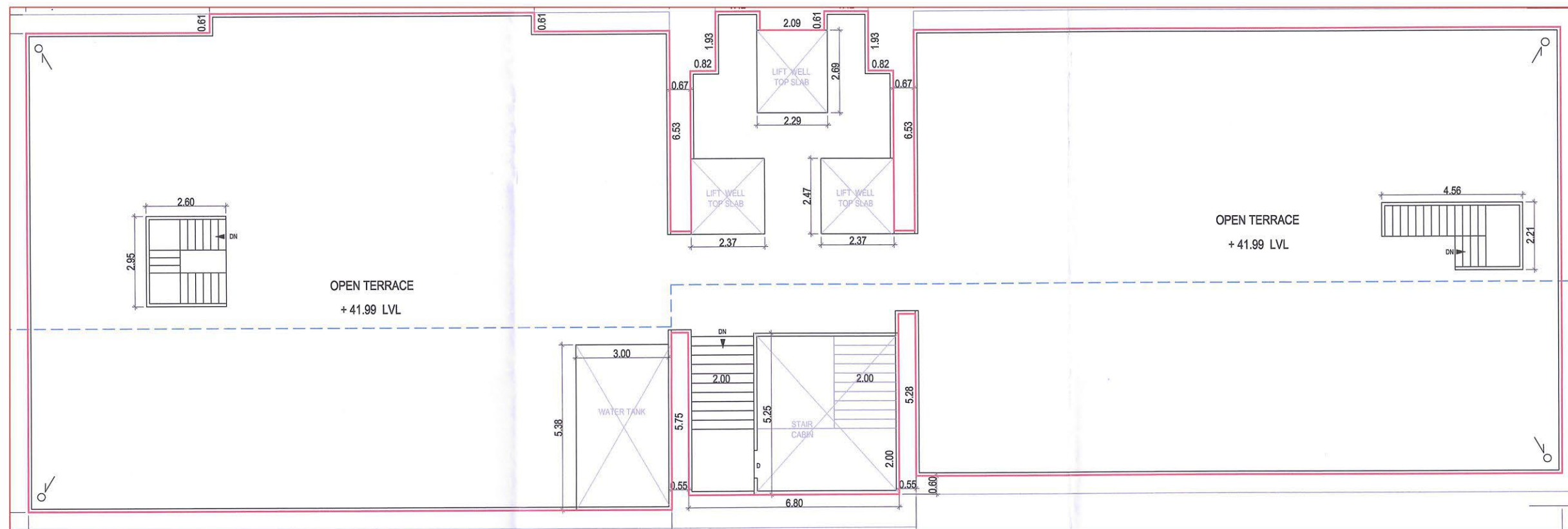
12th FLOOR



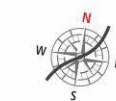
TYPICAL FLOOR PLAN

BUILDING F

*# Draft under review



TERRACE PLAN



TYPICAL FLOOR PLAN

BUILDING F

*# Draft under review



1st to 11th FLOORS



TYPICAL FLOOR PLAN

BUILDING G

**# Draft under review



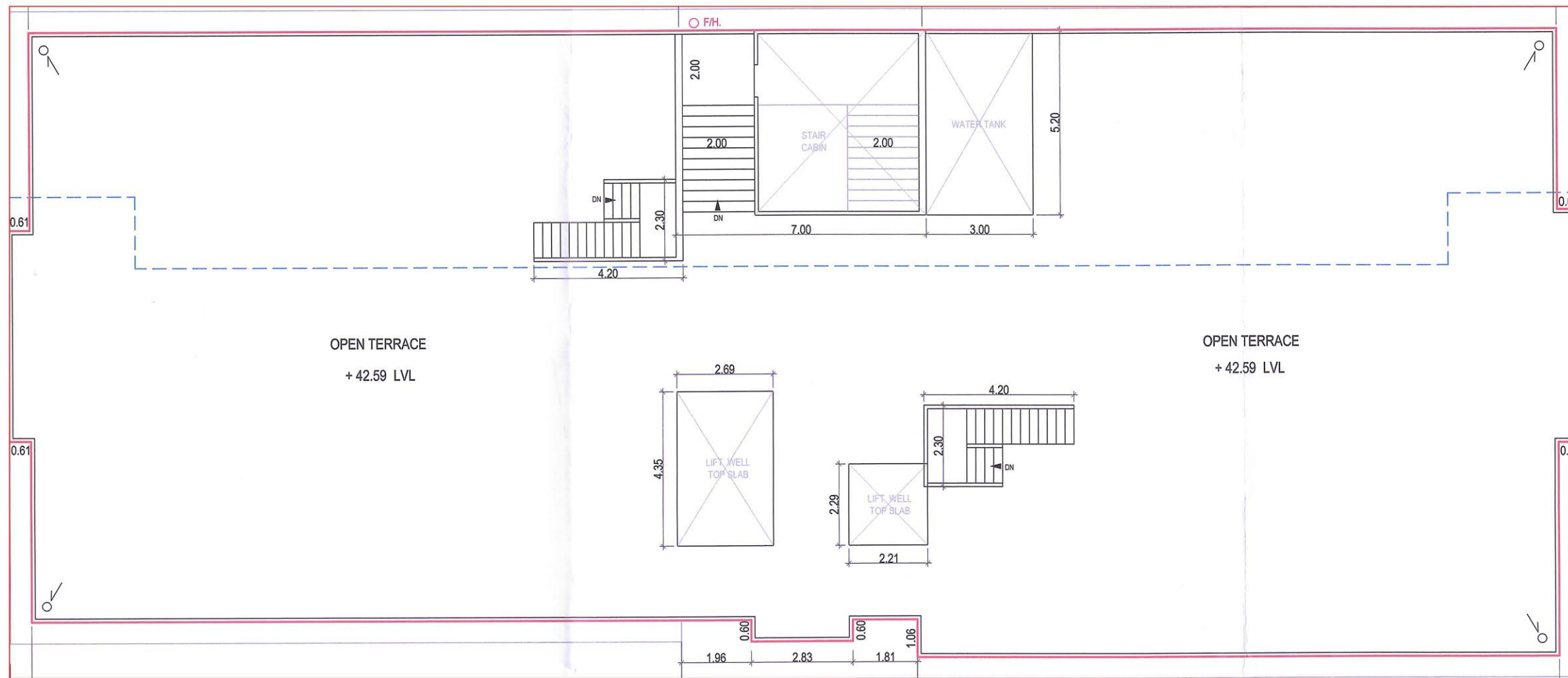
12th FLOOR



TYPICAL FLOOR PLAN

BUILDING G

*# Draft under review



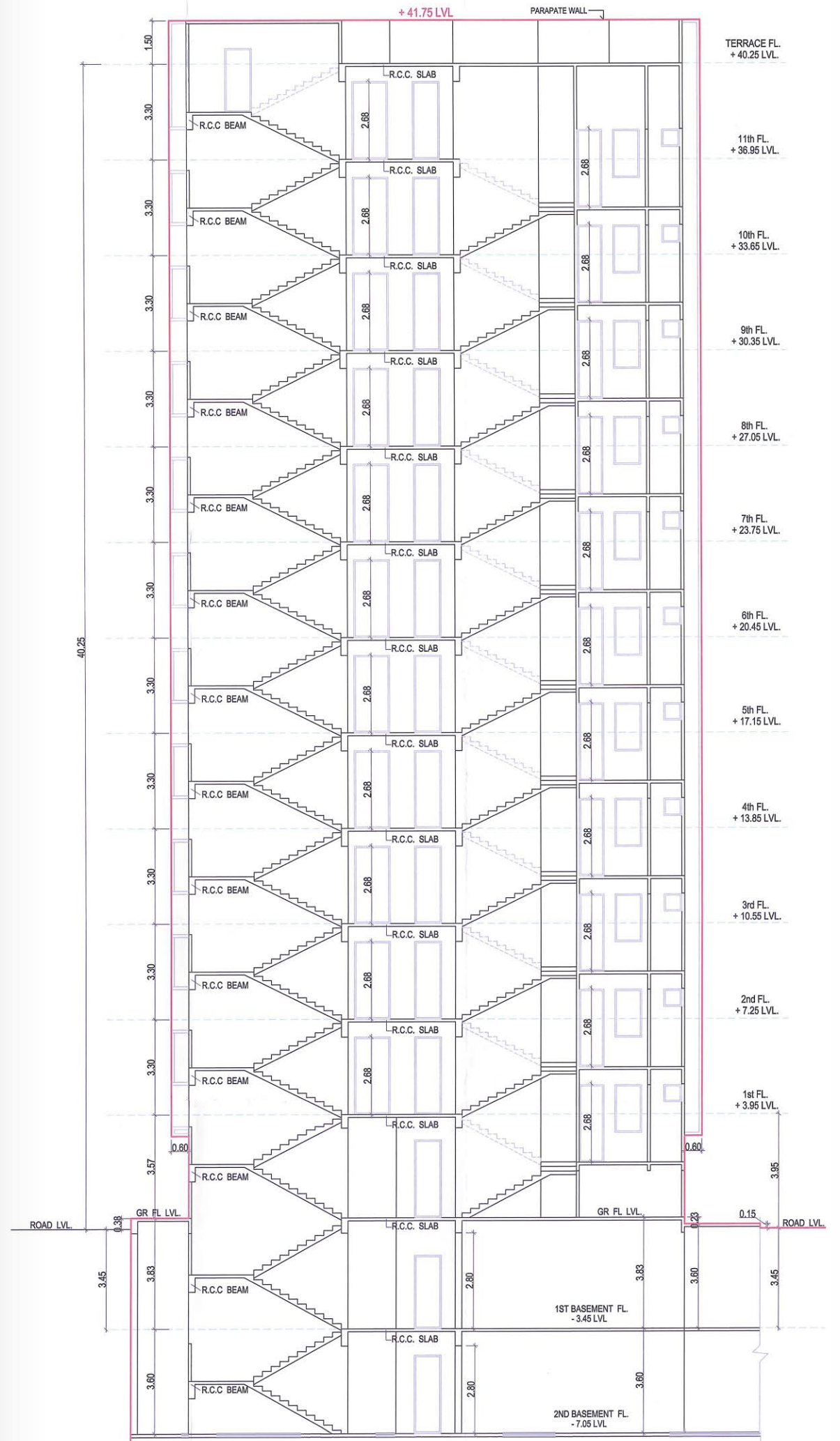
TERRACE PLAN



TYPICAL FLOOR PLAN

BUILDING G

*# Draft under review



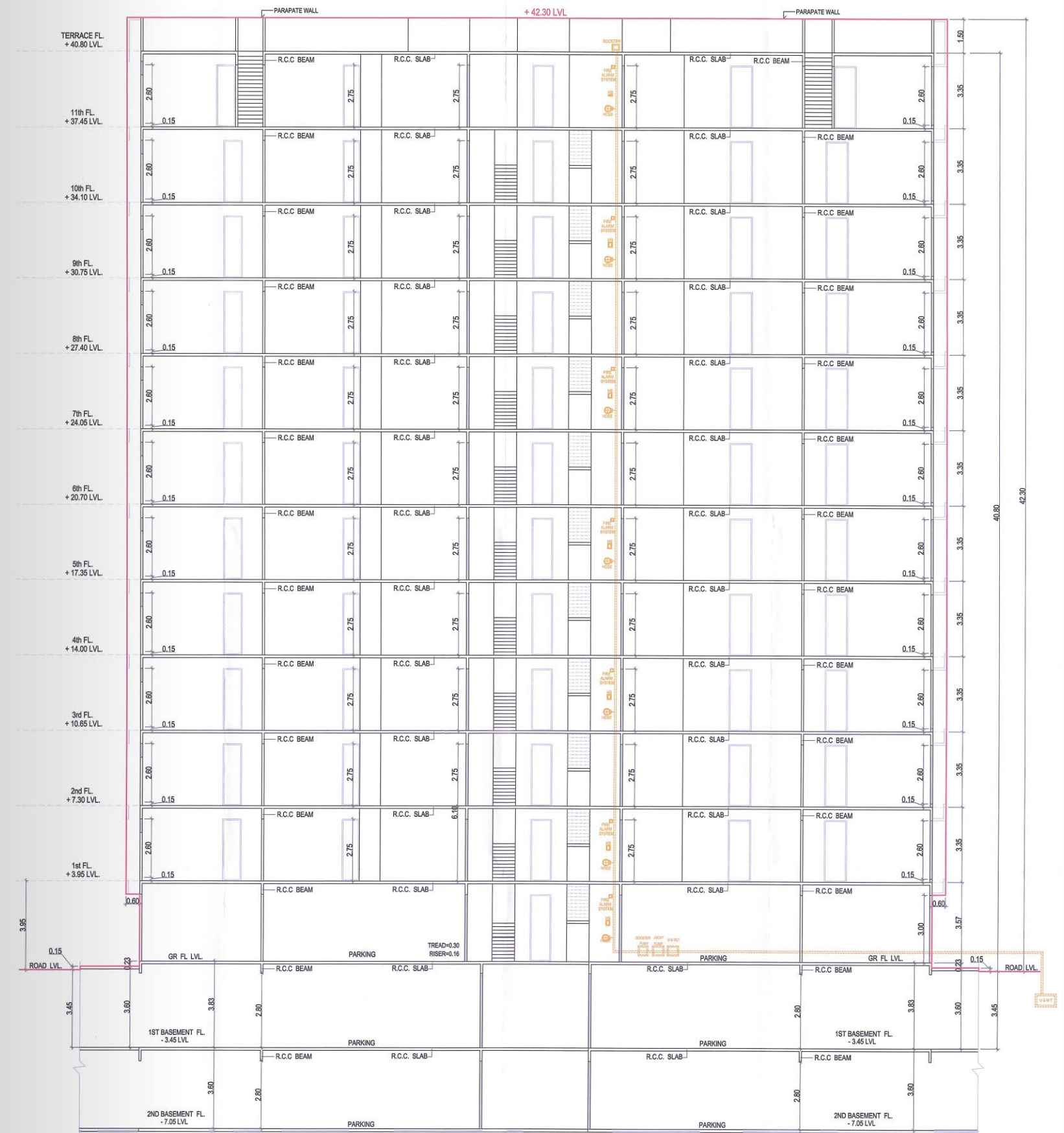
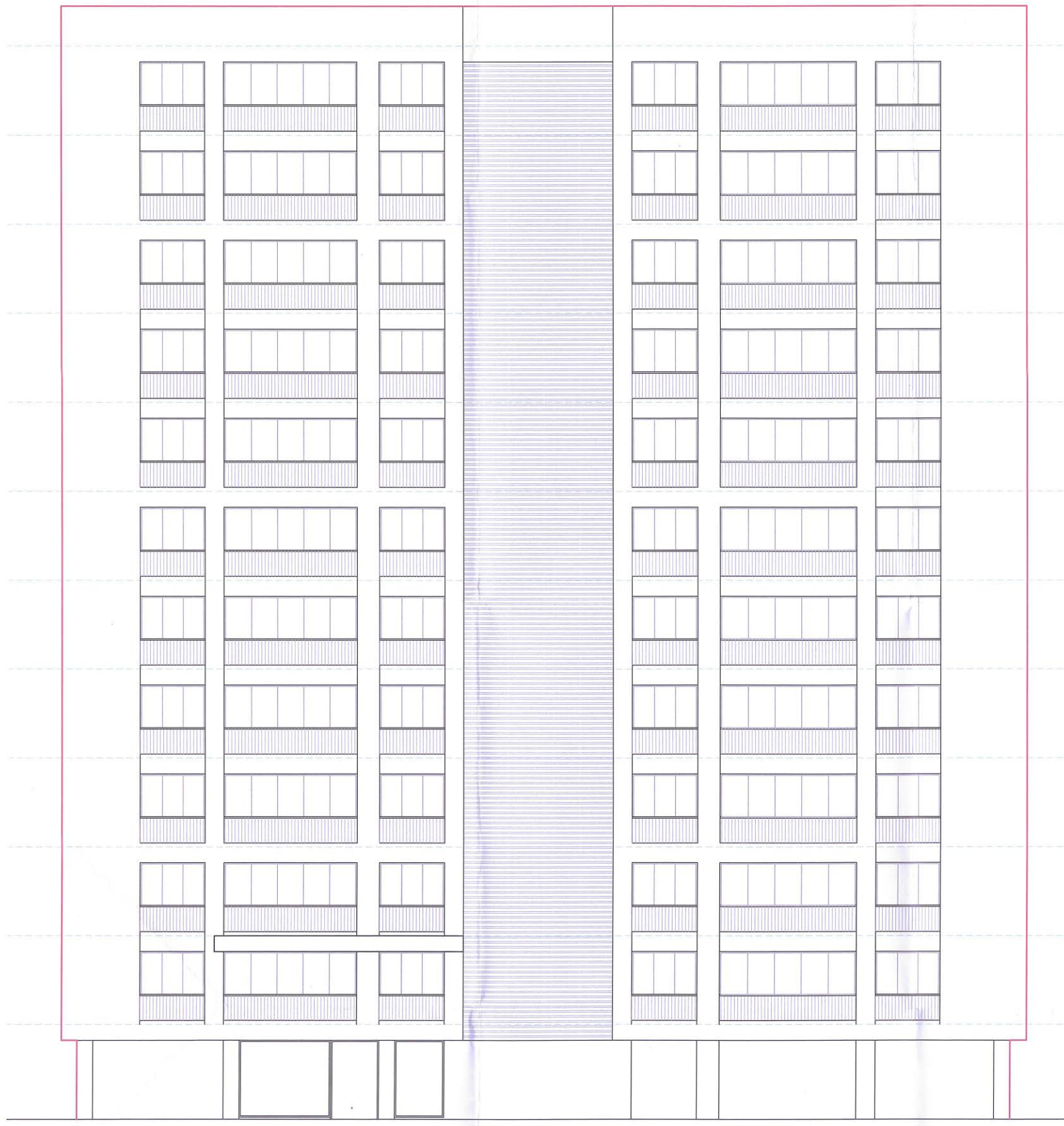
BUILDING A

*# Draft under review



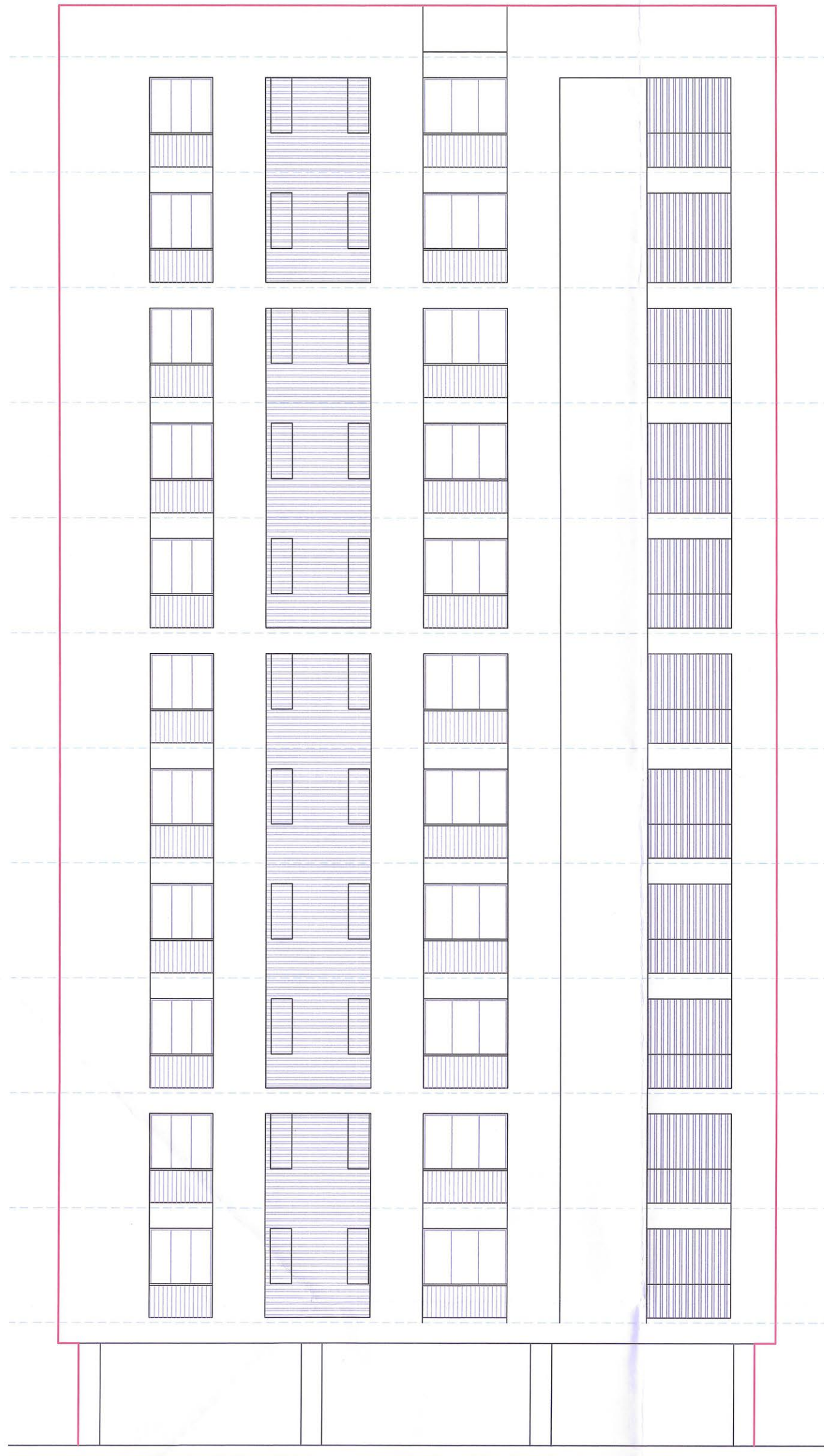
BUILDING B & C

*# Draft under review



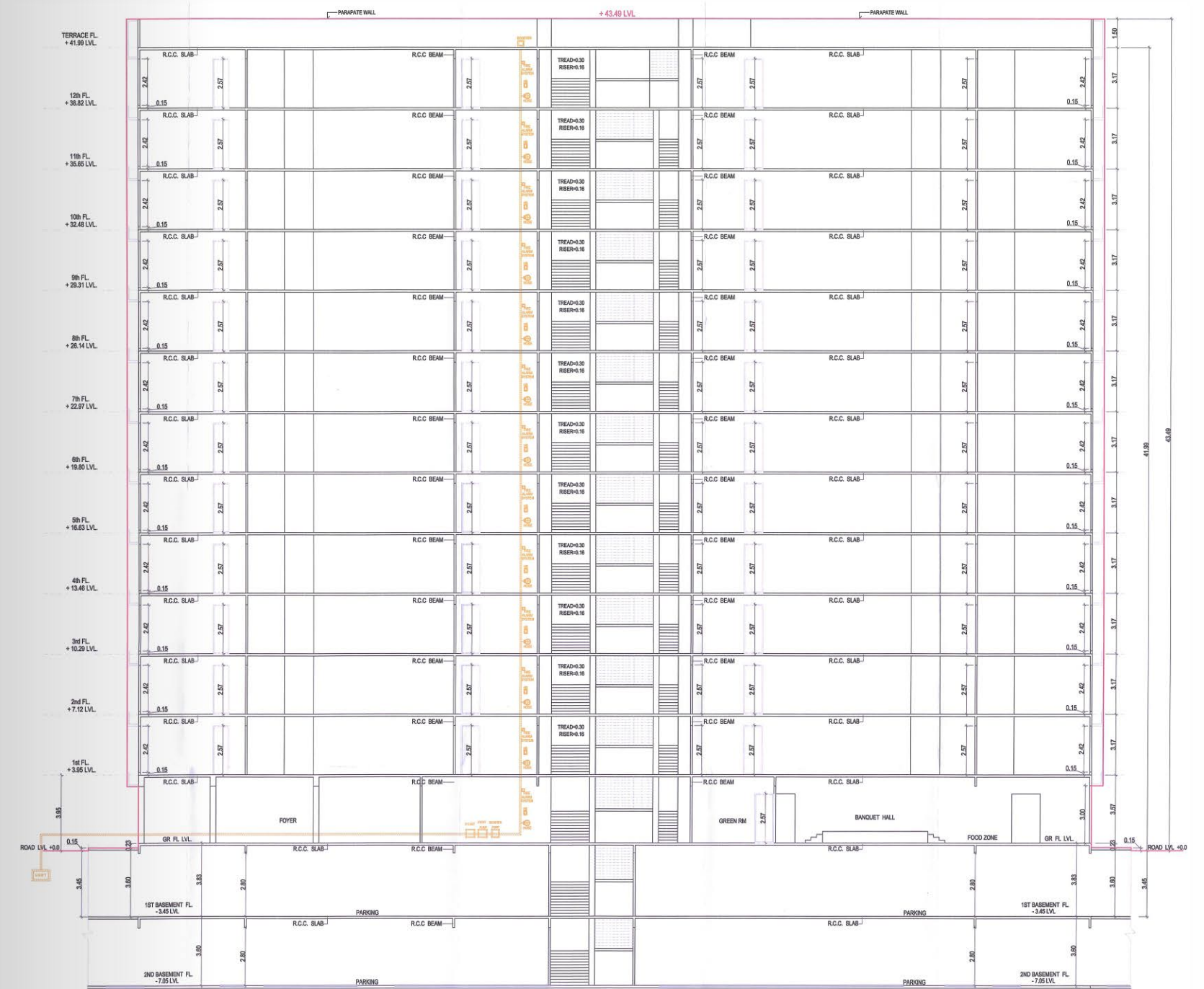
BUILDING D

*# Draft under review



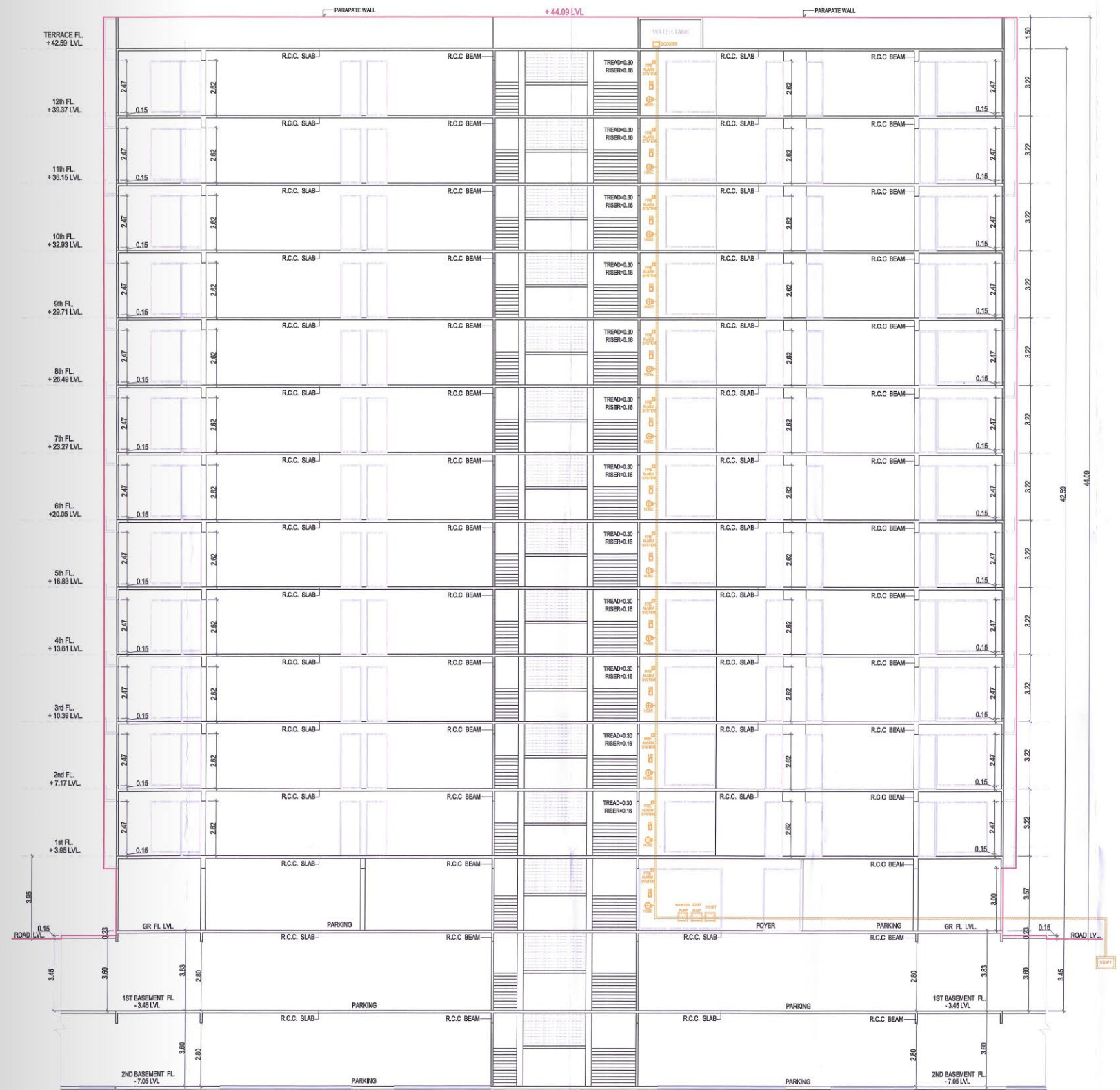
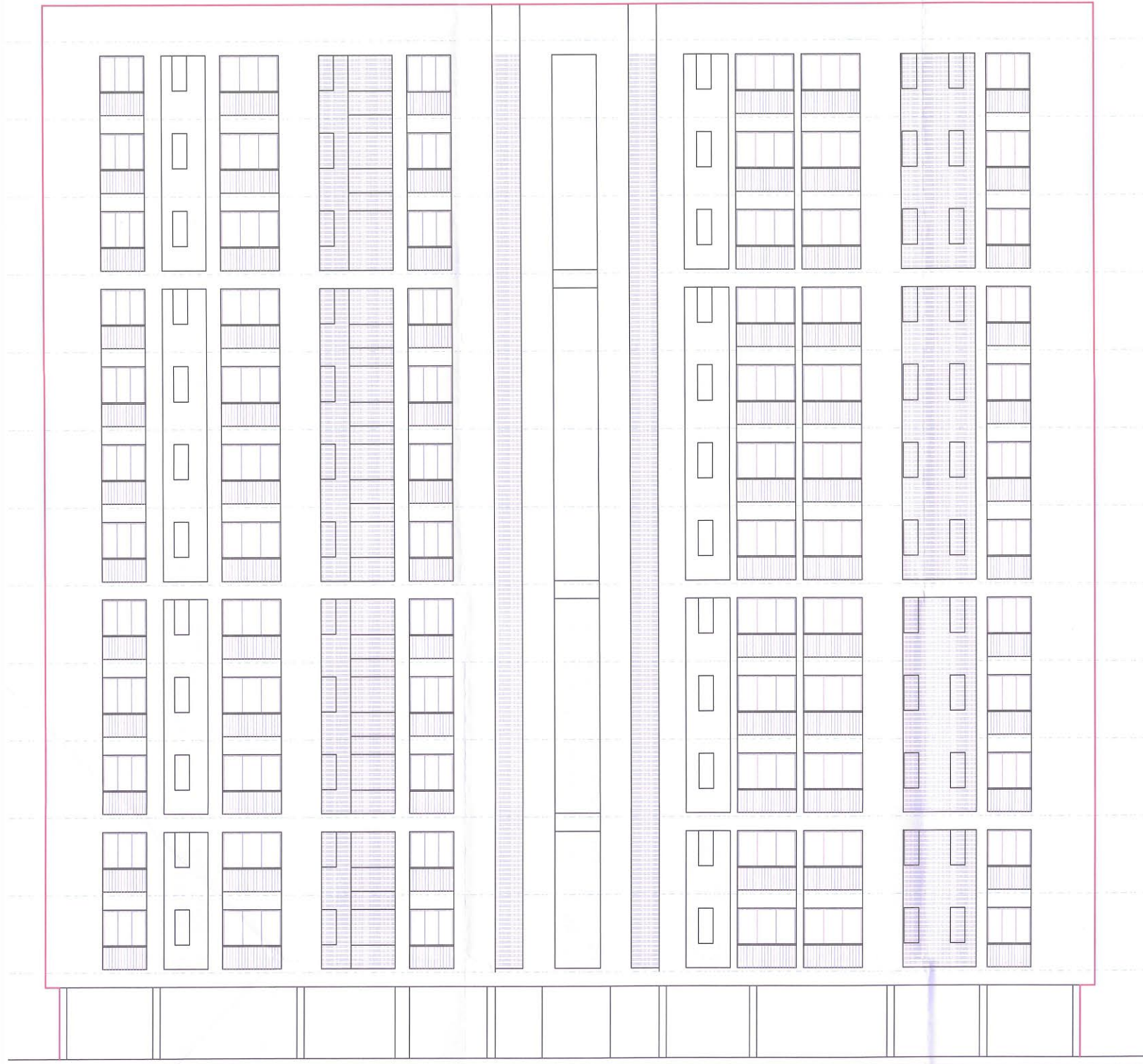
BUILDING E

*# Draft under review



BUILDING F

*# Draft under review



BUILDING G

*# Draft under review

SPECIFICATION

APARTMENT SPECIFICATIONS



FLOOR FINISH

- Imported marble flooring in the living room, kitchen & dining space.
- Composite vitrified tile in all bedrooms.



BALCONY

- Balcony with designer rustic tiles on the floor.
- S.S. / M.S. / Aluminium & Glass railing.



KITCHEN

- Kitchen platform with composite marble / granite.
- Vitrified tile dado up to lintel level.



WASH & UTILITY

- Rustic tiles flooring & vitrified tile on dado with adequate electrical & plumbing points.



TOILETS

- Vitrified tile up to lintel level with standard quality sanitary-ware & C.P. fittings in all toilets.



DOORS & WINDOWS

- Main door with wooden frame & all other doors only with frame.
- All window openings are provided with good quality anodized aluminum / UPVC section & glass.



ELECTRICAL

- Sufficient points in concealed copper wiring with switches.



BLOCK MASONRY

- Wall construction with standard AAC block masonry.



PLASTER

- Internal wall plaster with white wash.

BUILDING SPECIFICATIONS



ELEVATORS

- Three elevators per building.



ELECTRIC & POWER BACK-UP

- Silent generator of adequate capacity for lifts, water pumps & common facilities.



FIRE FIGHTING

- Fire fighting system provided as per specification / norms.



UGWT & OHWT

- UGWT & OHWT facility for sufficient water supply.



CCTV

- CCTV camera coverage in campus & building areas.



PARKING

- Basement parking facility.

WE REQUEST

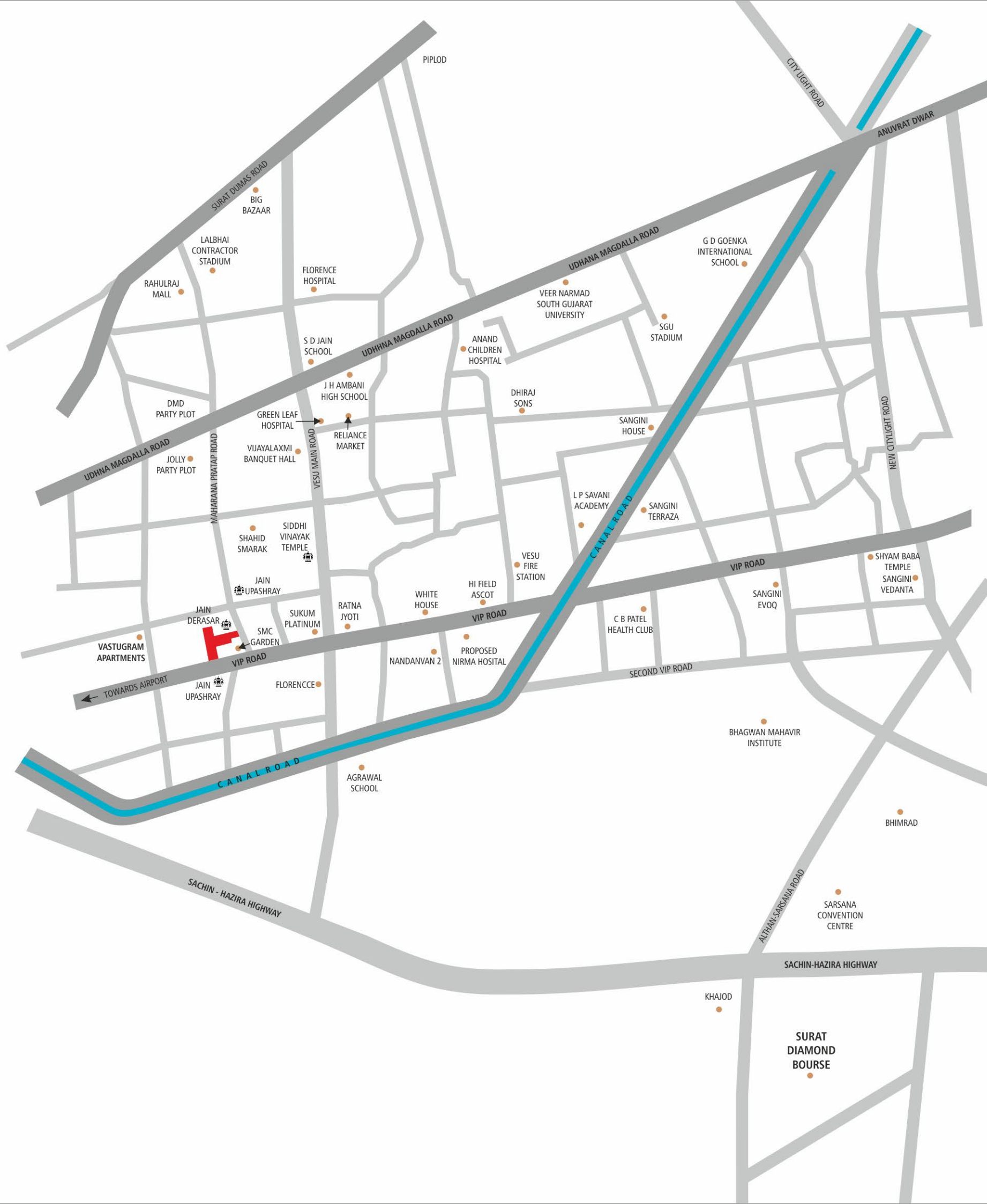
- Stamp duty, registration charges, legal charges, society maintenance charges (from the date of BUC) etc. shall be borne by the purchaser.
- GST, TDS & all other taxes prevailing or that may be levied in future will be borne by purchaser.
- Any Additional charges or Duties levied by the government / local authorities during or after the completion of the scheme like SMC Tax, will be borne by the purchaser.
- In the interest of continual developments & quality of construction, the developer reserves all rights to make any changes in the scheme including technical specification, designs, planning, layout & all purchaser shall abide by such changes.
- Changes / Alteration of any Nature including elevation, exterior color scheme, balcony Grill or any other changes affecting the overall design concept & lookout of the scheme shall strictly not be permitted during or after the completion of the scheme.
- Any RCC member (beam, column & slab etc.) must not be damaged during the interior work or utilizing the unit.
- Low-voltage cables such as telephone, TV and Internet cables shall be strictly laid as per consultant's service drawings with prior consent of developer / builder office.
- No wire / cables / conduits shall be laid or installed in a way such that they from hanging formation on the building exterior face.
- Common passage / landscaped area not allowed to be used for personal purpose.
- This brochure is intended only for easy display & information of the scheme and does not form part of legal documents.

NOTES

- All rights for Alteration / Modification in design or specifications suggested by architects and / or developer shall be binding to all the members.
- BUC (Building Use Certificate) as per SMC rules, clear title for loan purpose.
- This brochure is for private circulation only. By no means, it will form part of any legal contract.

LEGAL DISCLAIMER

- *All furniture / objects shown in the plan are for presentation & understanding purpose only. By no means, it will form a part of final deliverable product.
- #All the elements, objects, treatments, materials, equipment & color scheme shown are artisan's impression and purely for presentation purpose. By no means, it will form a part of the amenities, features or specification of our final products.



LOCATION MAP

DEVELOPER

PRASHANTI CORPORATION

Address: E.P.-16 + 29, T.P.S.-7, Nr. Sarjan Palace, Vesu, Magdalla, Surat 395007

E-mail: rera.emerald@shaligramgroup.in

Contact: +91 90168 74404

*# Draft under review