



THE MAJESTIC

Developer Name
Sidharth Homes

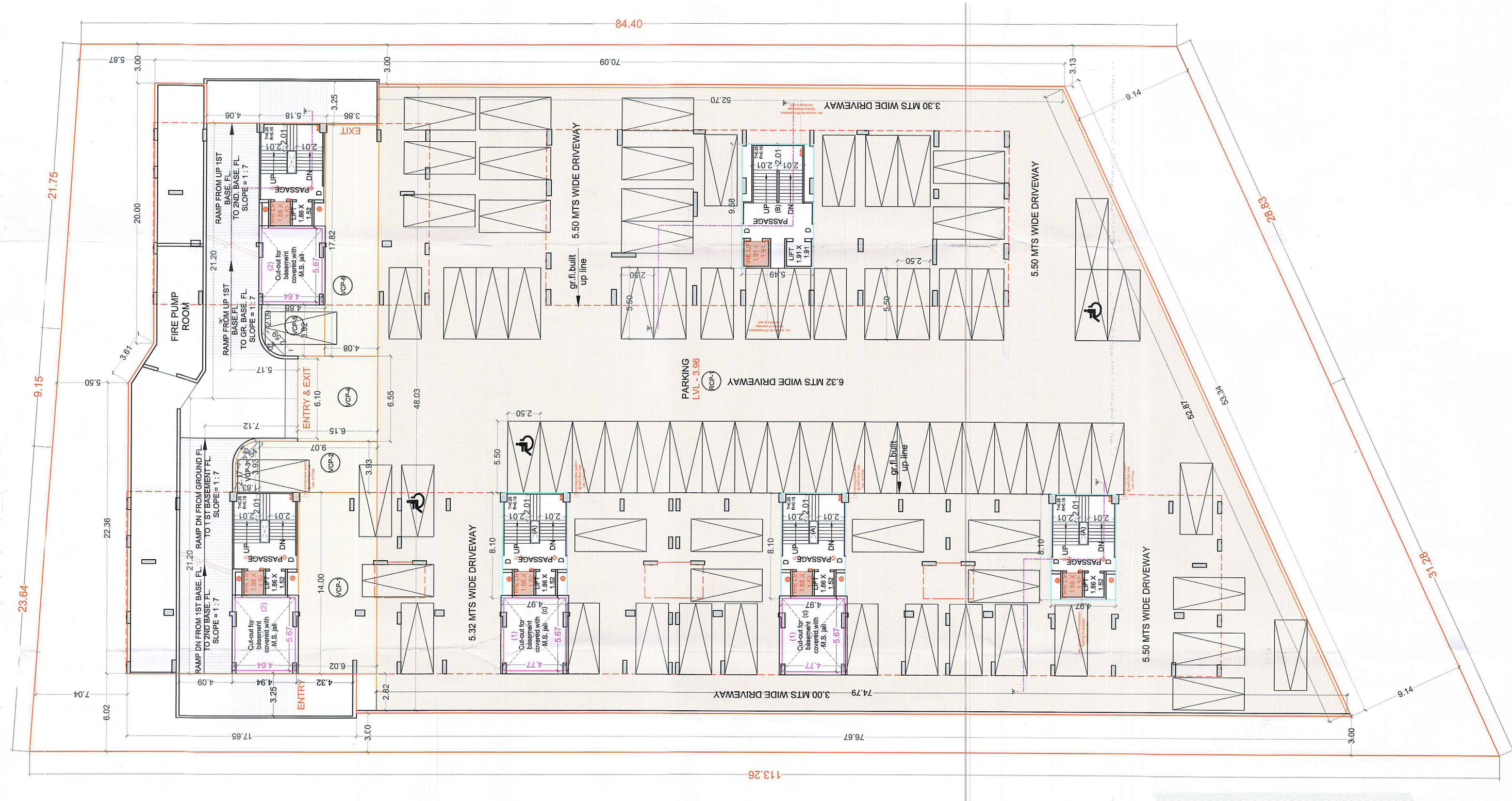
Site Address:
FP 24-25. "THE MAJESTIC"
Near Soham Circle,
New CityLight - Althan Bridge Roads,
Althan, Surat-395017

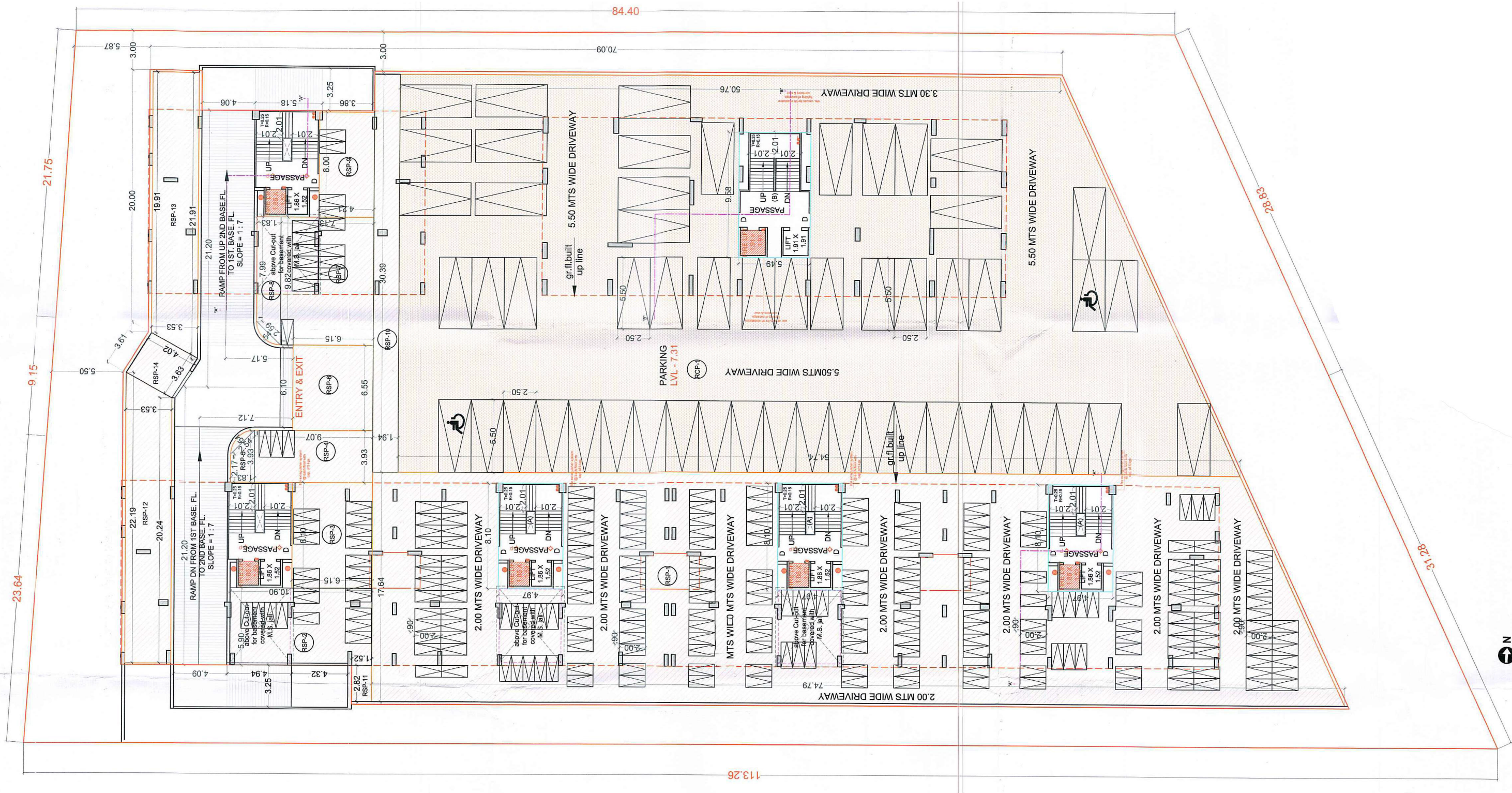
Contact No.
73939 77777, 73830 70700

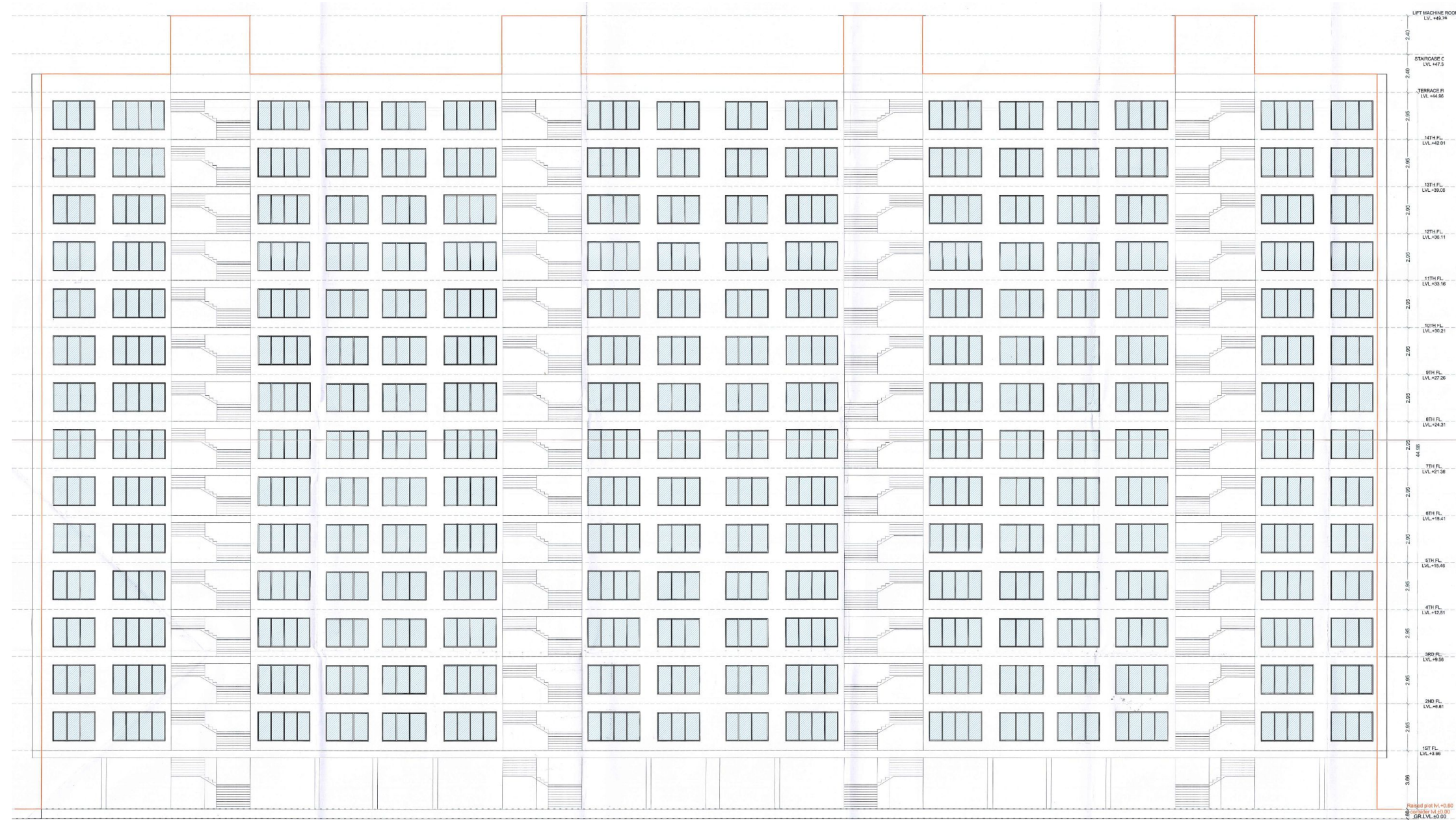
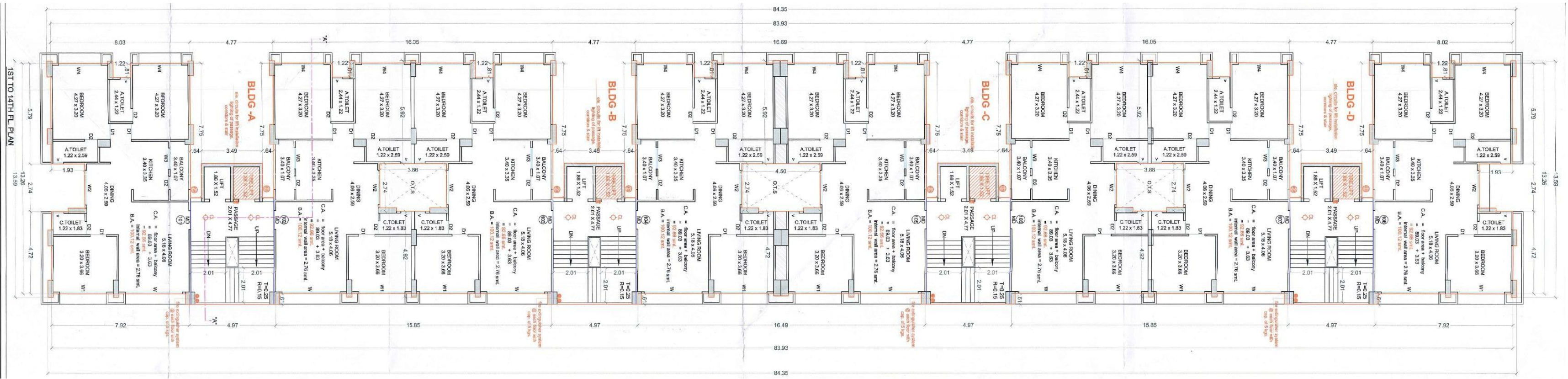
RERA No:
Ref PR/GJ/SURAT/SURAT CITY/SUDA/RAA04319/121218

Rera Website Add:
gujrera.gujarat.gov.in





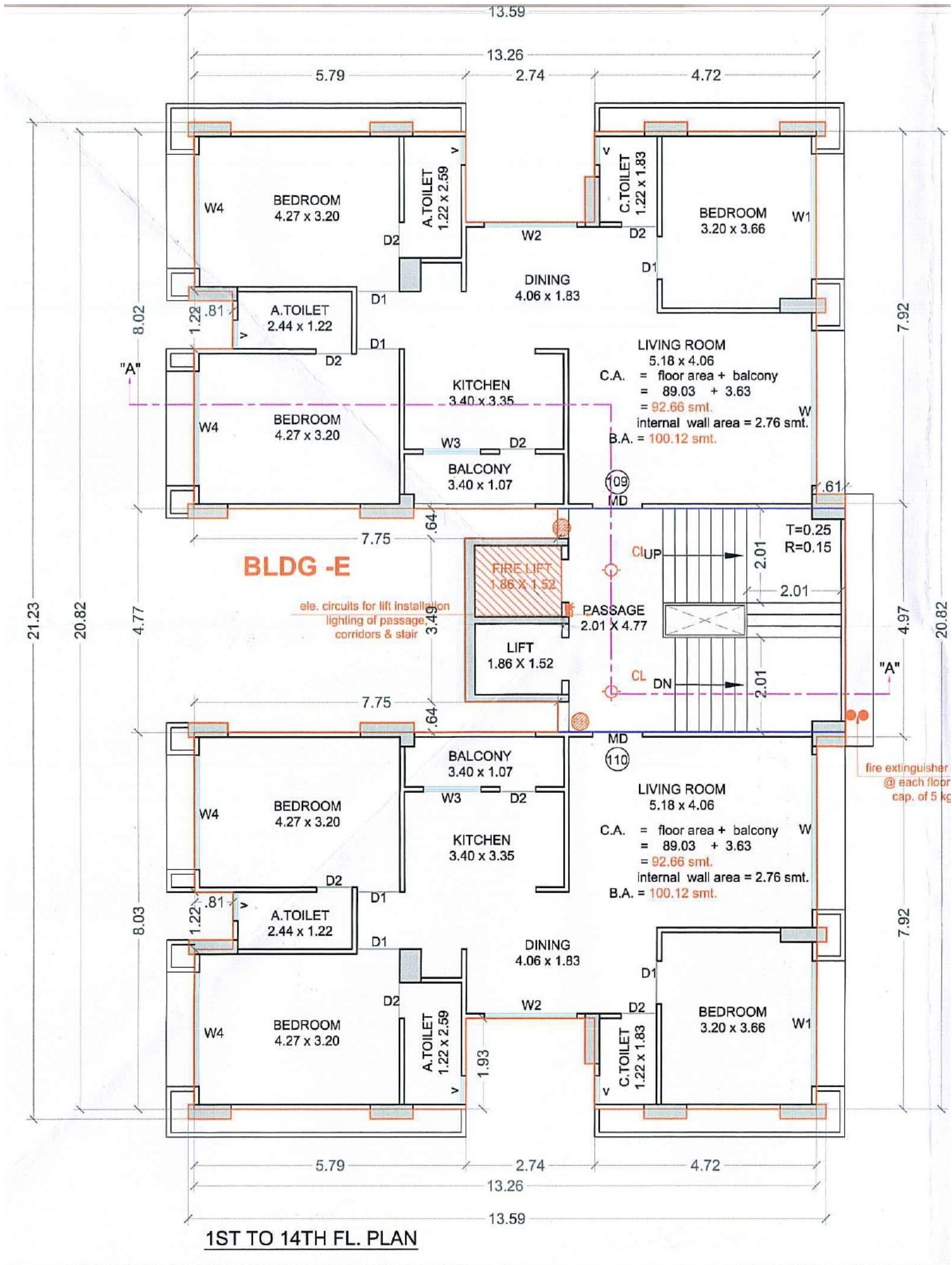




ABCD TOWER FLOOR PLAN AND ABCD TOWER ELEVATION PLAN

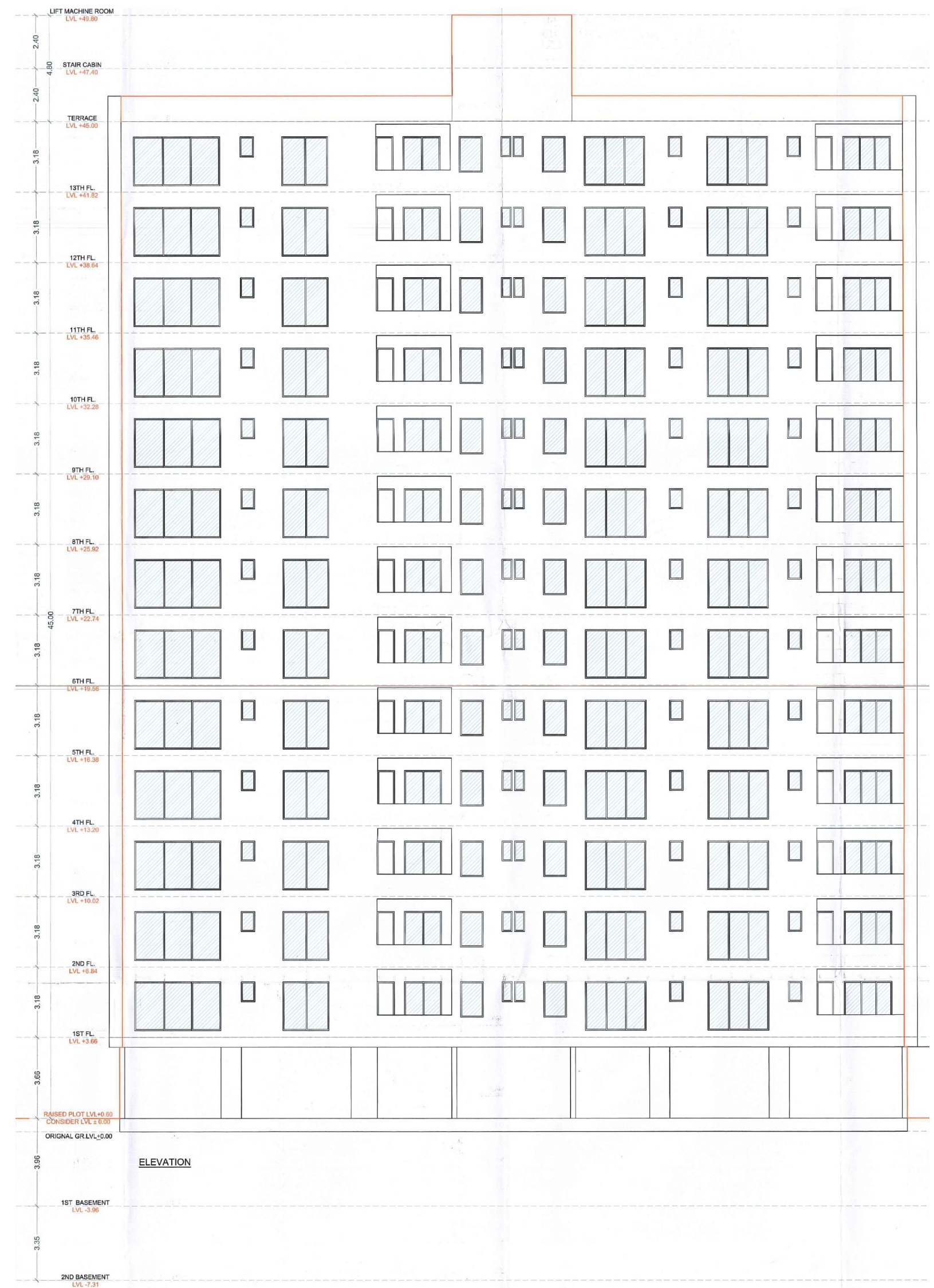
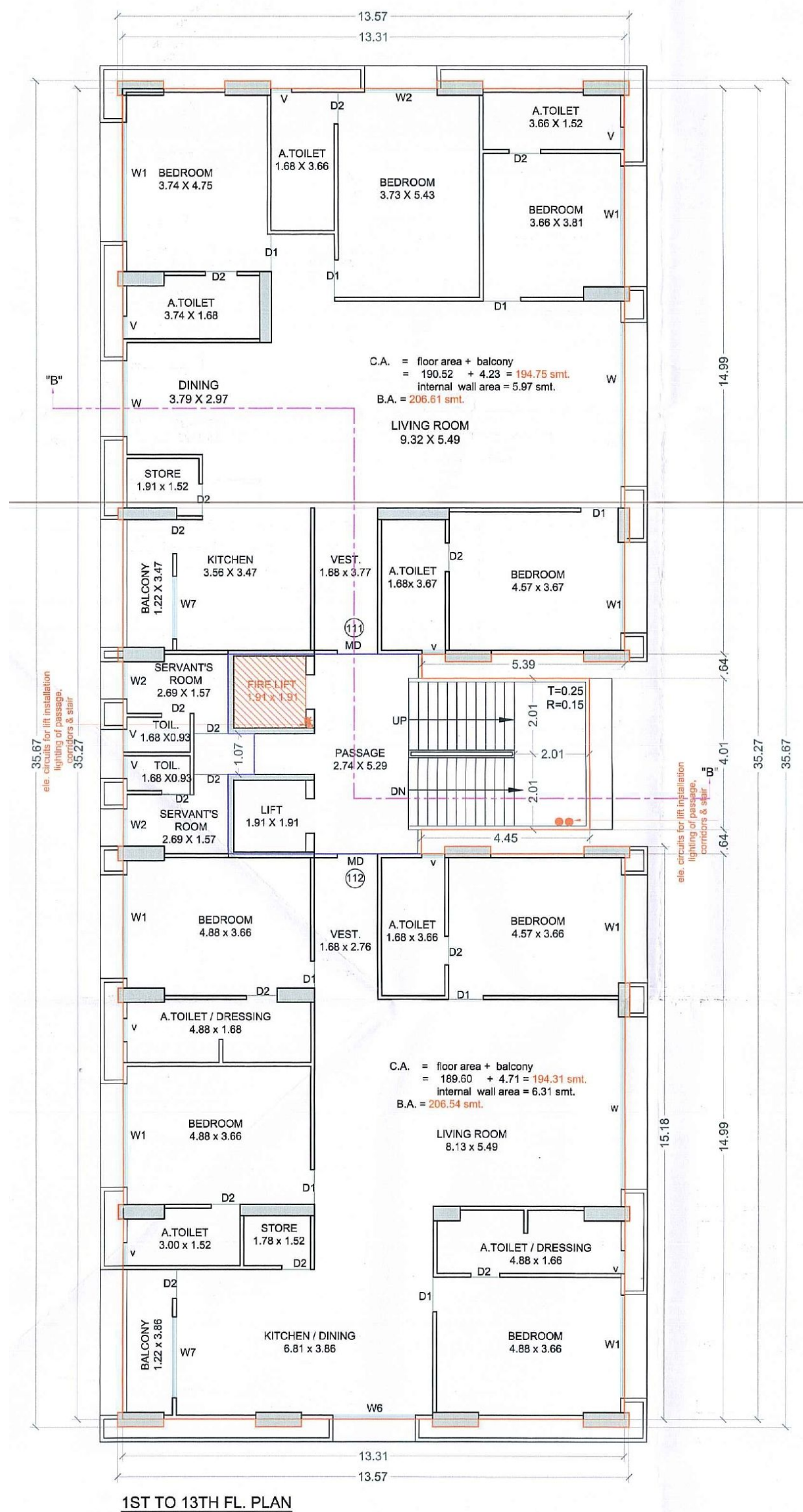
FRONT ELEVATION

E TOWER FLOOR PLAN



















E TOWER ELEVATION PLAN





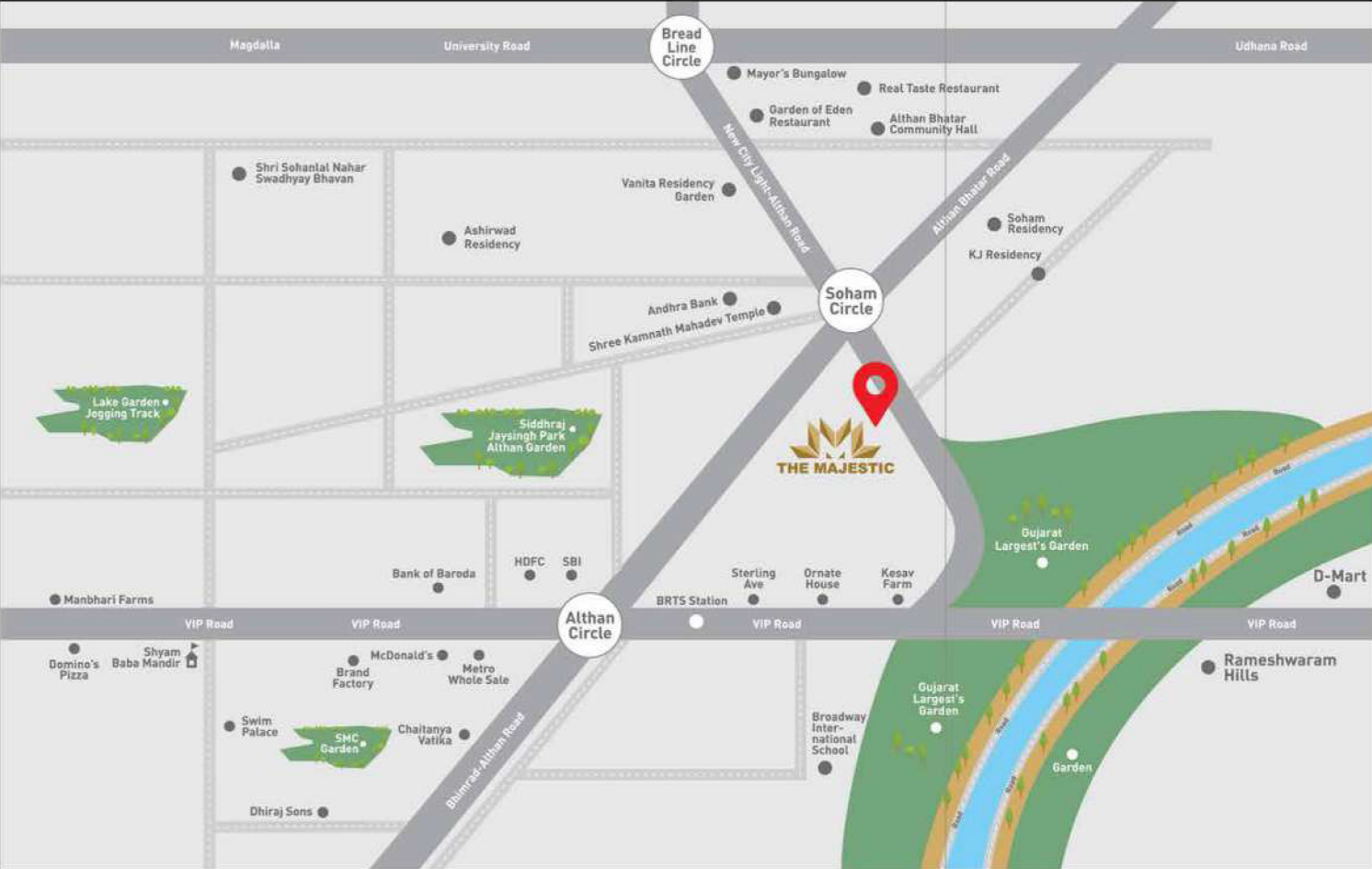
AMENITIES

	Children Play Area		3 & 4 BHK Lavish High Rise Apartment
	Garden		Fire System
	Grand Entrance		Located in Posh area & on 50' and 40' feet corner road off nana mauva main road
	CCTV Surveillance in common Area with Intercom Facilities		Attractive Elegant Elevation
	Comfortable Planning.		Silent Generator for Elevator, & Common Lightings
	Two Auto Door S.S. Elevator with ARD System.		Security Cabin 24 x 7
	Game Zone		Banquet Hall
	Allocated Car Parking Per Flat.		Elegant entrance foyer and spacious lift lobby

SPECIFICATION

	WALLS Sand faced plaster on external walls.		FLOORING Premium Quality Vitrified Tiles in all bed rooms, kitchen, living area, balconies & wash area.
	Rain Water Harvesting System in Box		ELECTRIFICATION Branded cable wiring with modular switches. Distribution panel with sufficient electric points with ELCB, MCB.
	PLUMBING Reverse plumbing system. CPVC & UPVC for hot & cold water supply & PVC pipe for drainage system.		BATHROOM Premium quality wall tiles. Branded quality sanitary wares & C.P. Fittings. Provision for hot water supply.
	KITCHEN Sandwich Granite platform with Stainless Steel sink. Premium quality wall tiles with PNG Gas Connection		SAFETY Railing in Stair & Balcony. With fire Safety System in Common Building Area
	Washing Area		DOORS Decorative main door & other Flush Door with Lock fittings.
	WINDOWS Coloured Coated Aluminium Section Window with granite sill. Provision of mosquito net		PAINTS Standard paint on all external walls. Oil paint on all fabrication work.

Key Plan



DEVELOPER ADDRESS :

FP 24-25, "THE MAJESTIC"
NEAR SOHAM CIRCLE,
NEW CITY LIGHT - ALTHAN BRIDGE ROADS,
ALTHAN, SURAT 395017



Developers Sidharth Homes	Architect Black Ink Sanjay Josshi & Associates	Structure Engineer Sai Consultant Hiren Desai
------------------------------	--	---

Booking Contact - 83000 00000

legal disclaimer : - All Furniture / object shown in the plan are for presentation & understanding purpose only. By no means, it will form a part of final deliverable product.

All the elements objects, treatments, equipment & color scheme are artisan's impression & purely for presentation purpose. By no means it will form a part of the amenities, features or specification of our final product.

NOTE: All rights for alteration / modification & development in design or specifications by architects &/ or developer shall be binding to all the members. • B.U.C. (Building use certificate) as per RUDA rules.clear title for loan purpose, this brochure is for private circulation only. By no means it will form part of any legal contract.

Stamp duty, Registration charges, Legal charges, PGVCL / RUDA charges, society maintenance deposit etc. shall be borne by the purchaser. • VAT service tax, TDS, GST & or any other taxes levied in future will be borne by the purchaser as applicable. • Any additional charges or duties levied by the Government/ Local Authorities during or after completion of the scheme shall be borne by the purchaser. • in the interest of continual developments in design & quality of construction, the developer reserves all rights to make any changes in the scheme including and not limited to technical specifications, design, planning, Layout & all purchasers shall abide by such changes. • Changes/alteration of any nature including elevation, exterior color scheme, balcony grill or any other changes affecting the overall design concept & outlook of the scheme are strictly NOT PERMITTED during or after the completion of the scheme. • Any RCC member (Beam,Column, Slab) must not be damaged during your interior work. • Low-voltage cables such as telephone, TV and internet cable shall be strictly laid as per consultant's service drawing with prior consent of Developer/ Builder's office. No wire/cables/conduits units shall be laid or installed such that they form hanging formation on the building exterior faces. • Common passages / landscaped areas are not allowed to be used for personal purpose.