

# V ONE

V One, Opp. Isro Colony, Iscon-Ambli Road,  
Nr. S.G.Highway, Ahmedabad, Gujarat - 380058.

## Vivan Oriental Ashiyana Infra

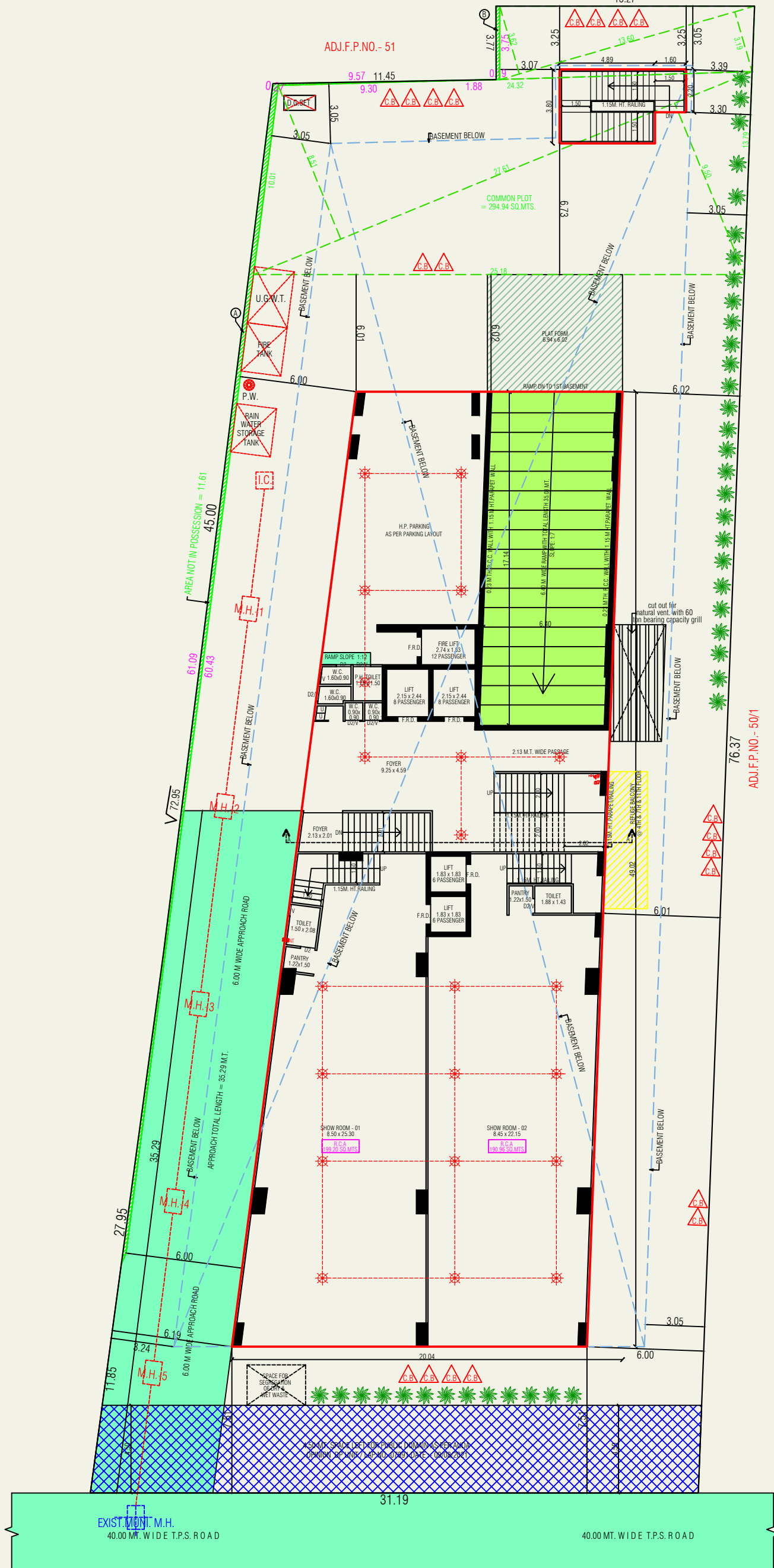
11th Floor 1101, Vivan Square, Jodhpur Cross Road,  
Satellite, Ahmedabad, Gujarat - 380015.

Contact No. :- +91 97277 54350

RERA Registration No. \_\_\_\_\_ [https://  
gujrera.gujarat.gov.in](https://gujrera.gujarat.gov.in)

Image is only for Representative Purpose

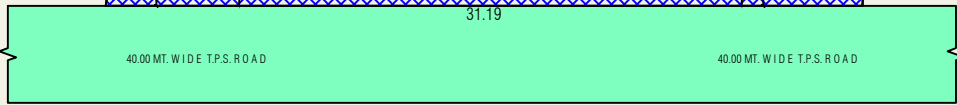
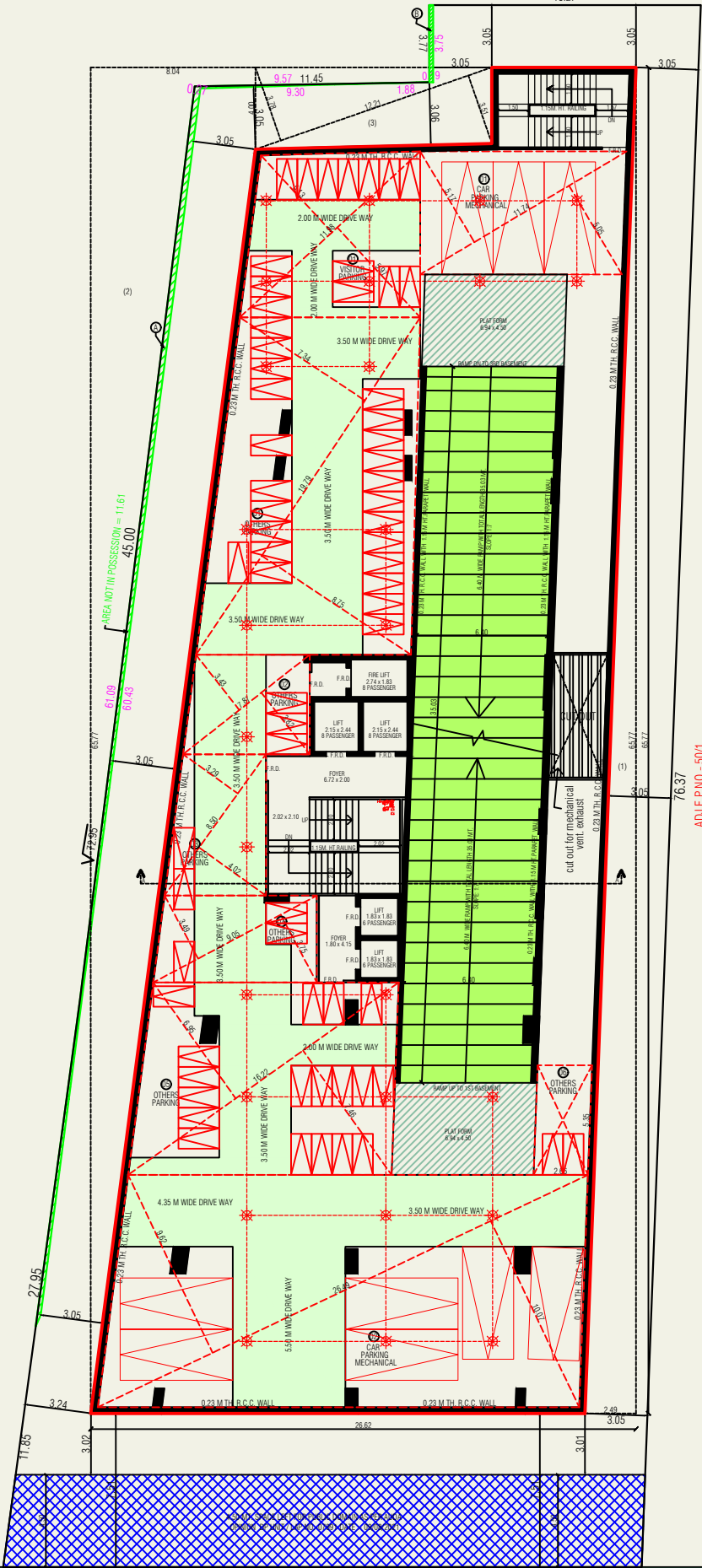




# LAYOUT PLAN

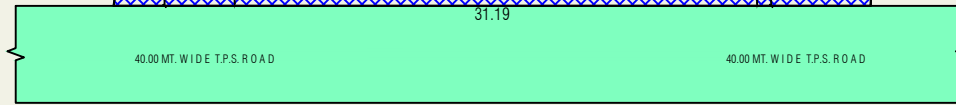
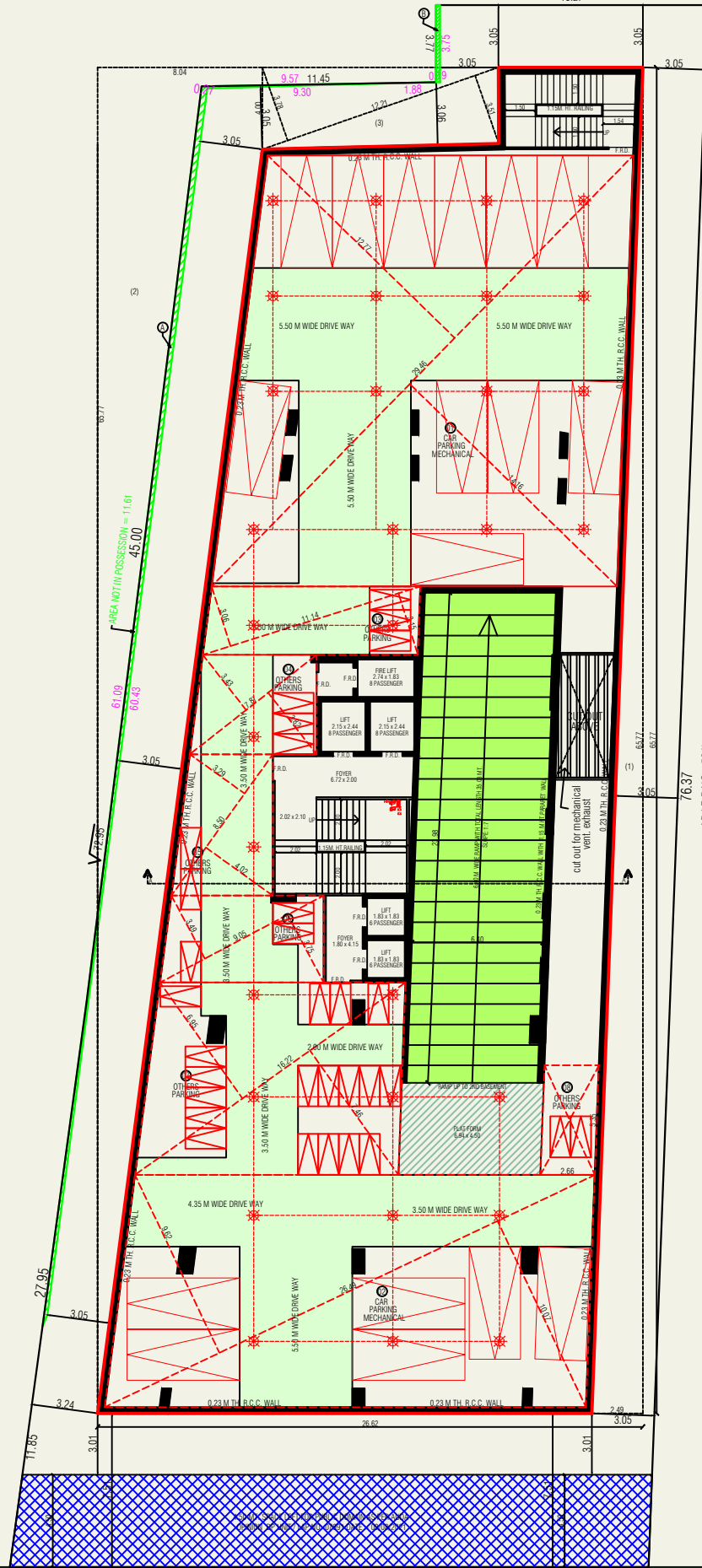
**Note:** Show Room 1 + Office 101 (Combined) = 199.20 sq mtrs + 333.47 sq mtrs = Total Carpet Area = 532.67 sq mtrs  
 Show Room 2 + Office 102 (Combined) = 190.96 sq mtrs + 190.15 sq mtrs = Total Carpet Area = 381.11 sq mtrs

ADJ.F.P.NO. - 49/2/1  
13.27

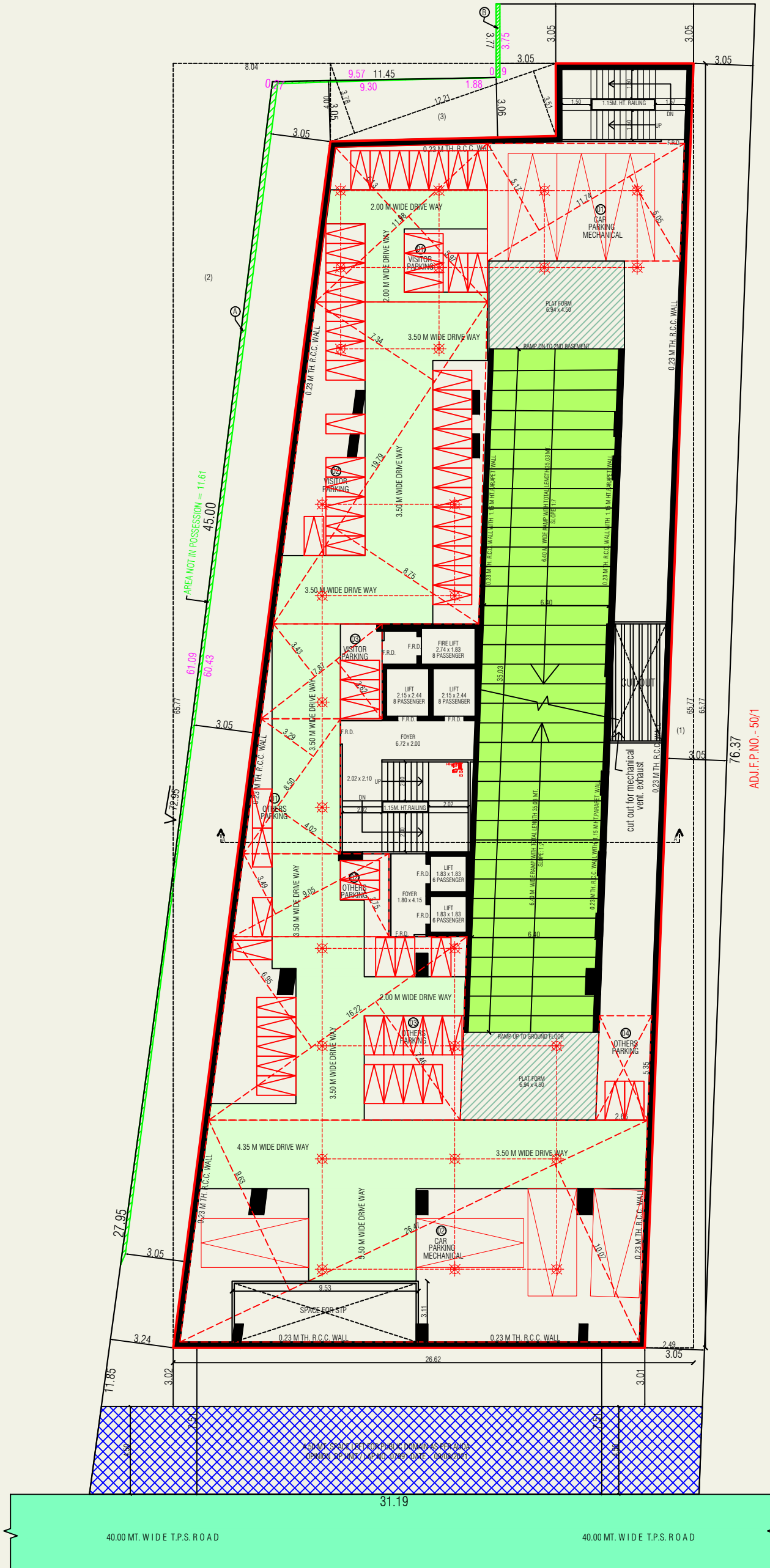


2ND BASEMENT PLAN

ADJ.F.P.NO. - 49/2/1  
13.27

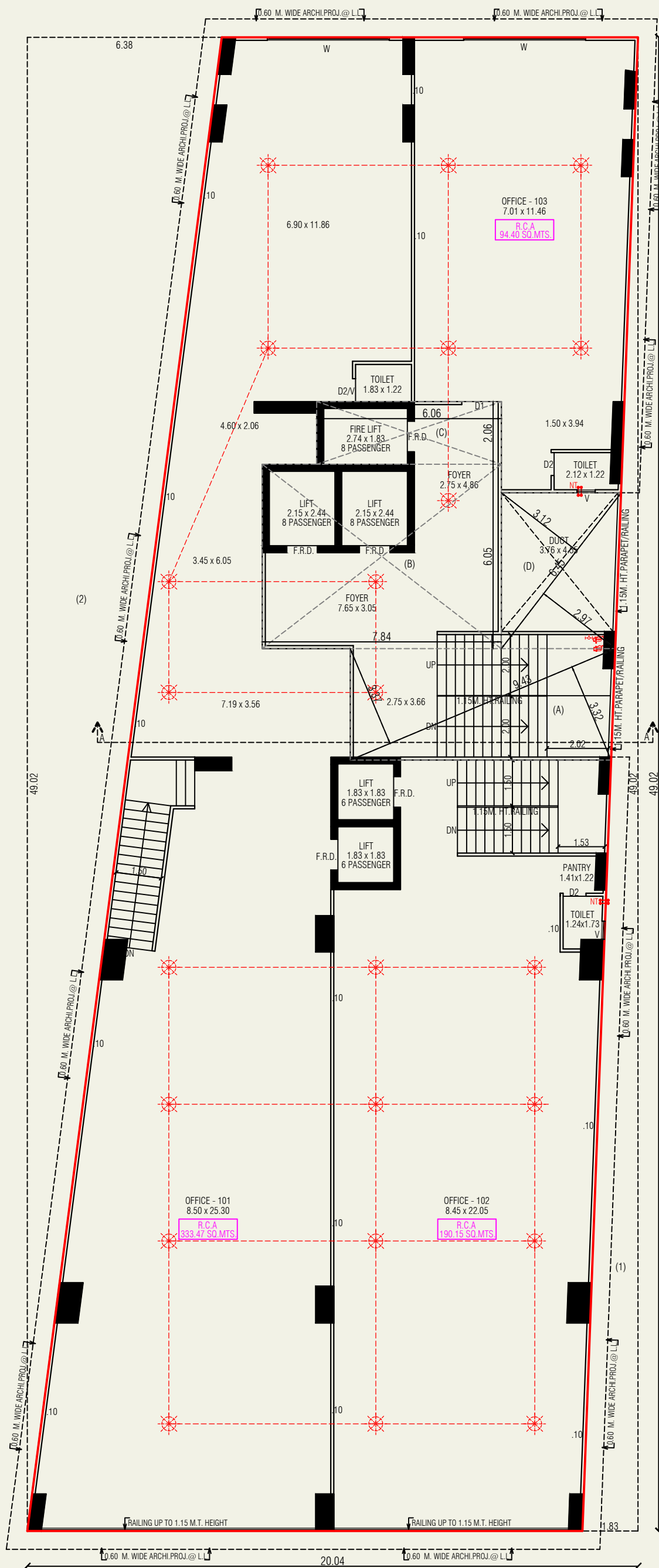


3RD BASEMENT PLAN



ADJ.F.P.NO.- 50/1





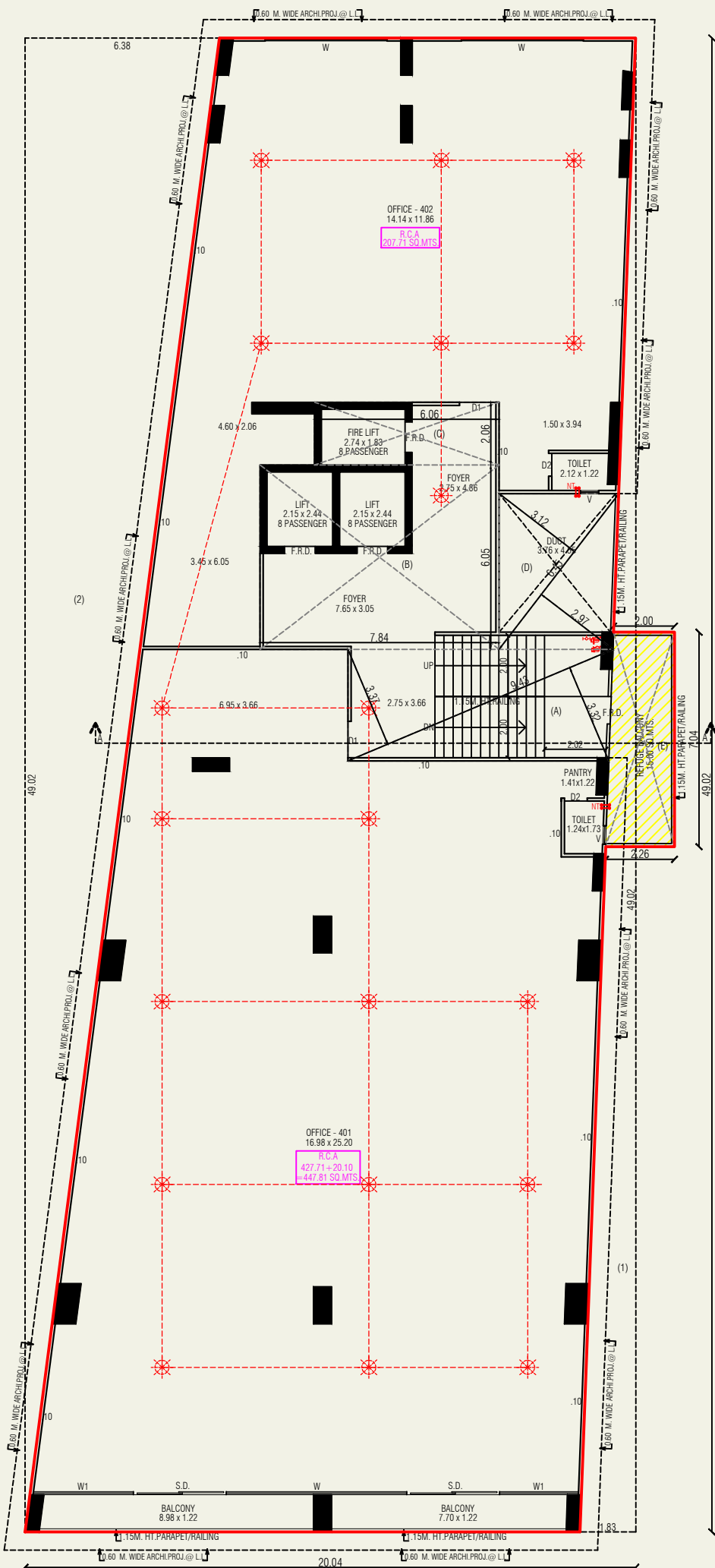
1ST FLOOR PLAN

07/15

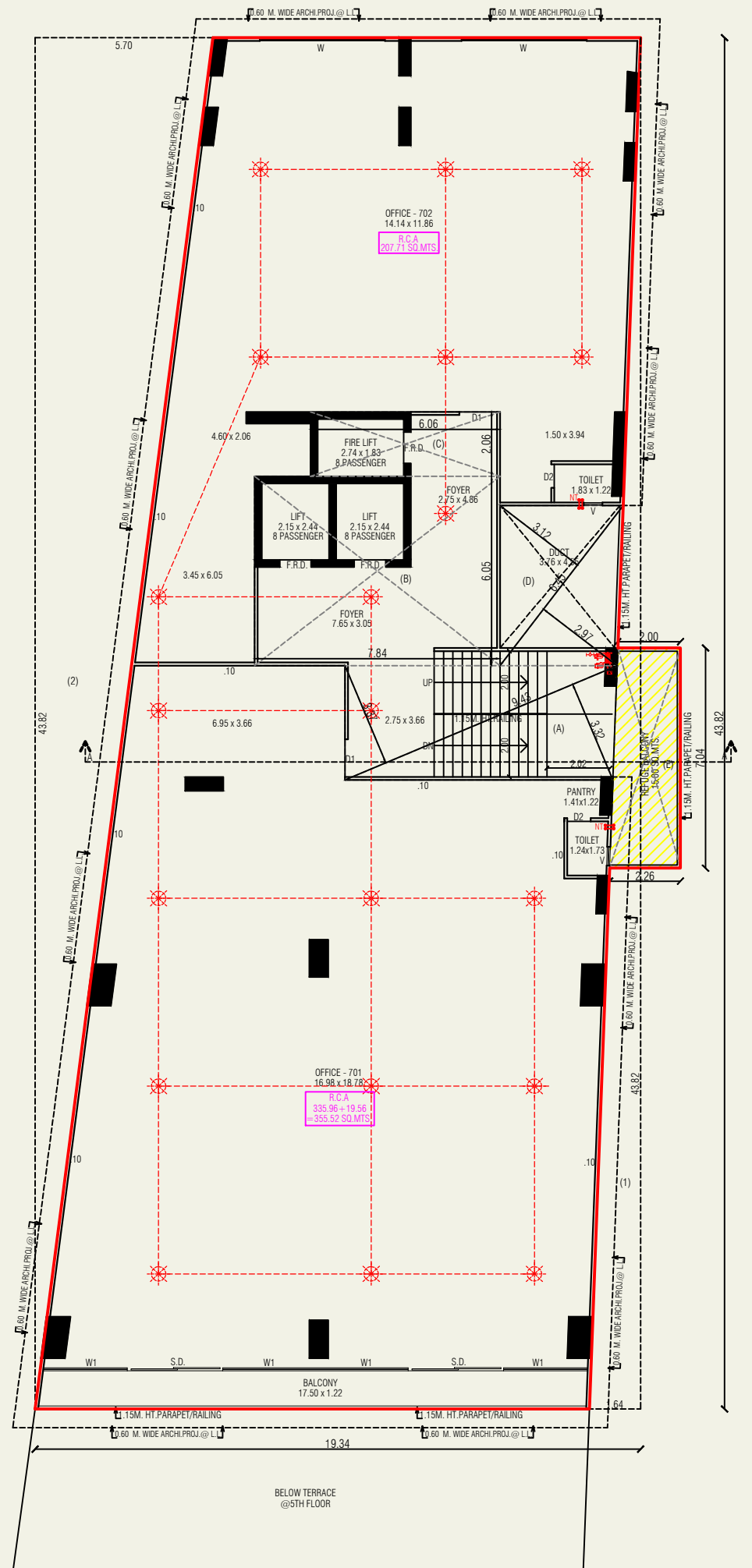
**Note:** Show Room 1 + Office 101 (Combined) = 199.20 sq mtrs + 333.47 sq mtrs = Total Carpet Area = 532.67 sq mtrs  
 Show Room 2 + Office 102 (Combined) = 190.96 sq mtrs + 190.15 sq mtrs = Total Carpet Area = 381.11 sq mtrs



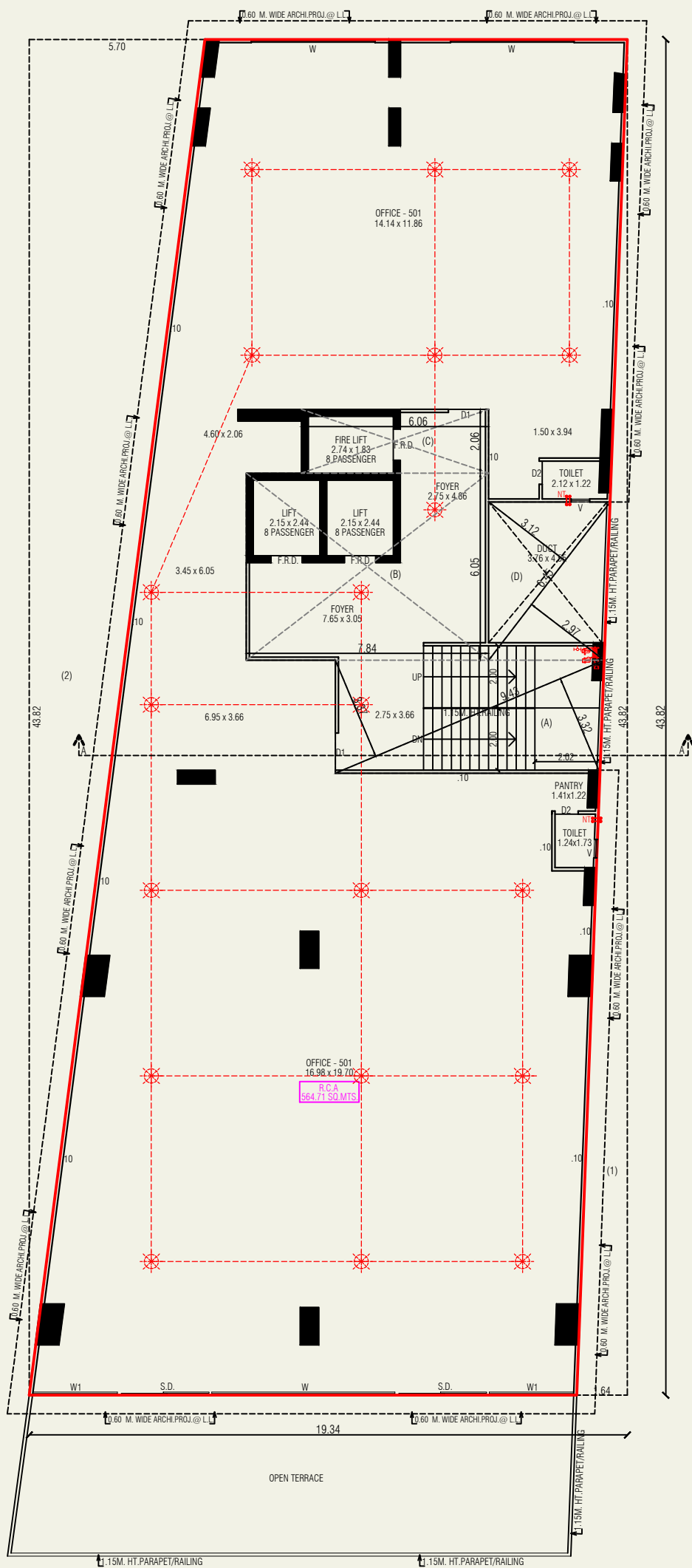




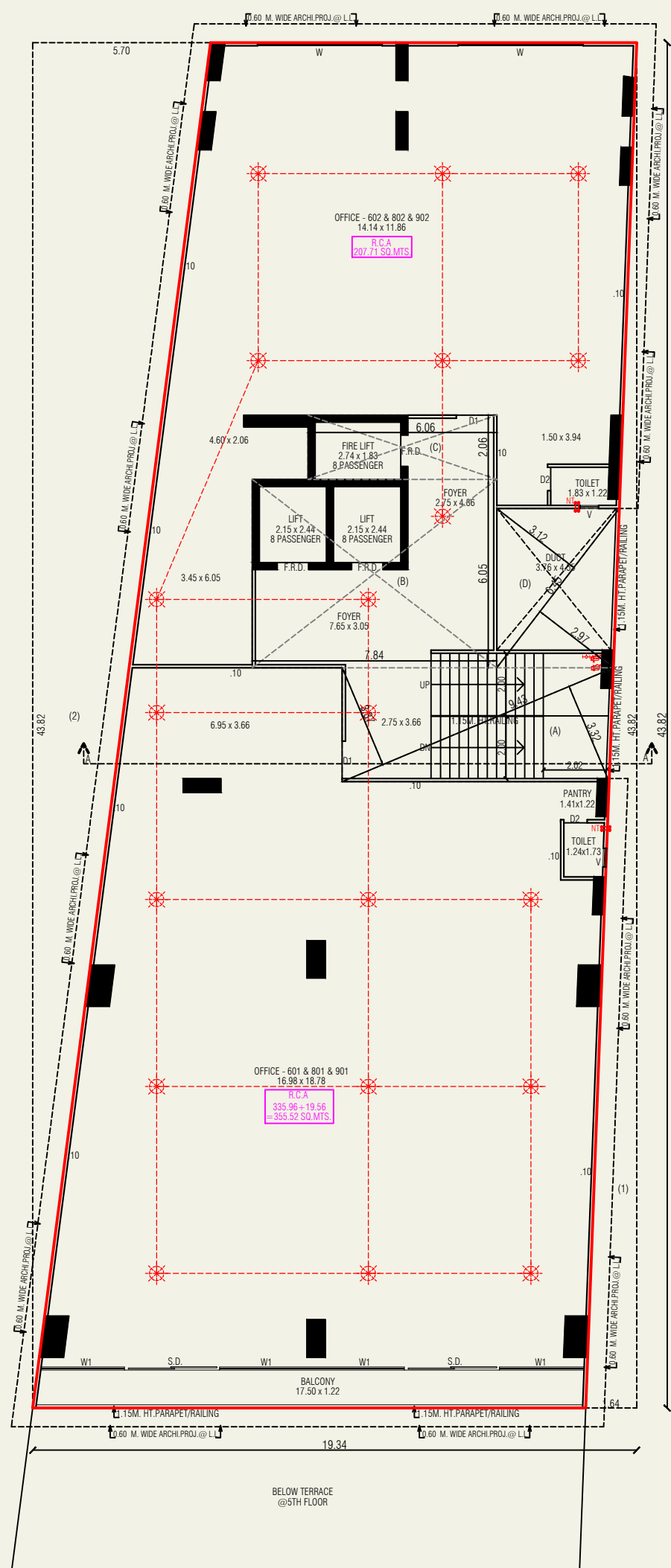
4TH FLOOR PLAN WITH REFUGE AREA



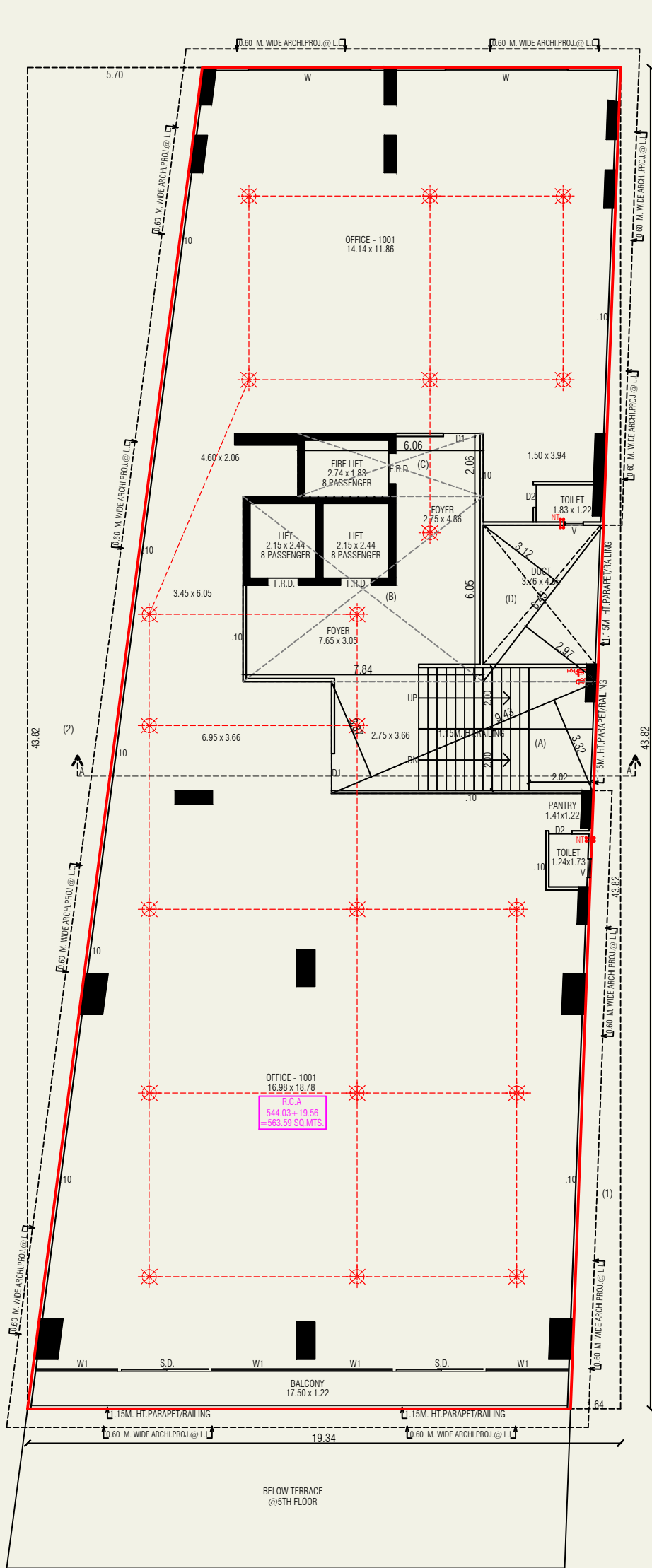
7TH FLOOR PLAN WITH ( REFUGE AREA )



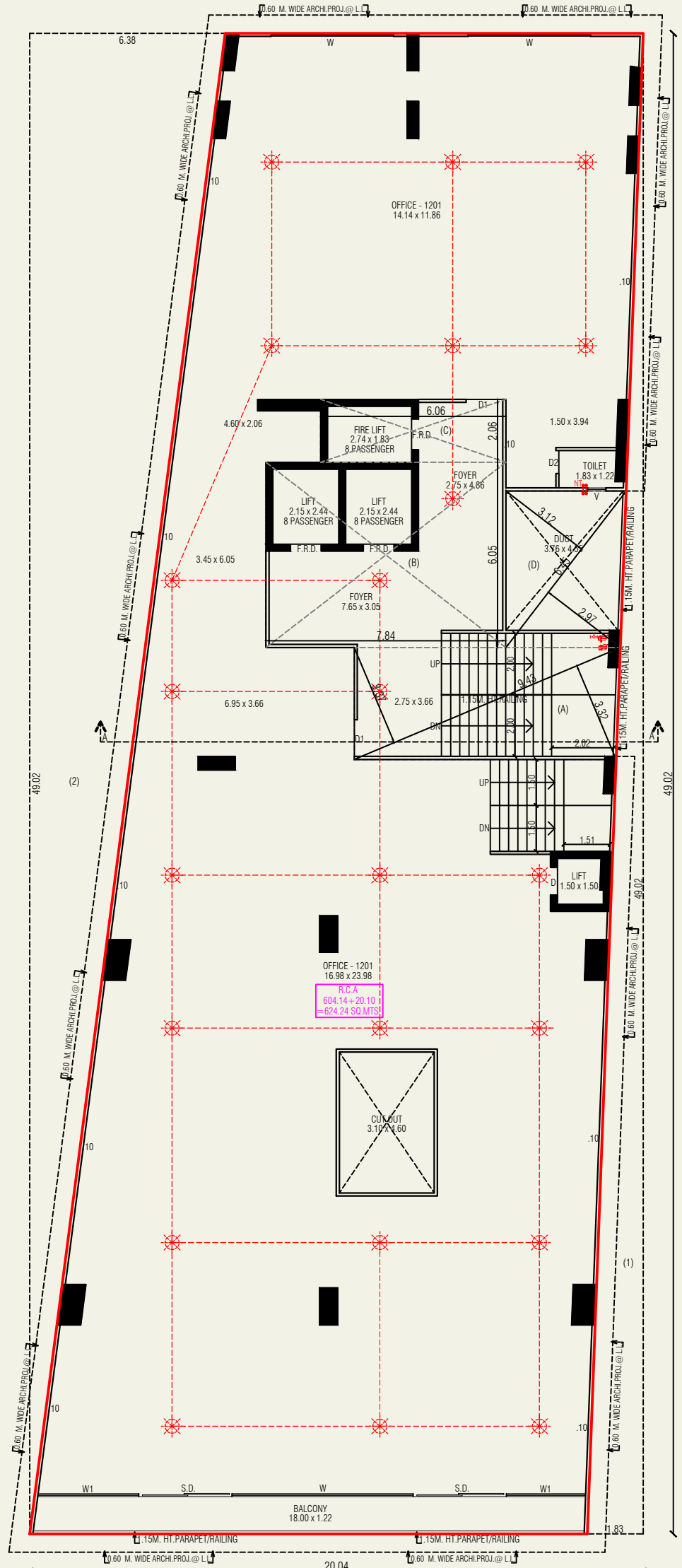
5TH FLOOR PLAN



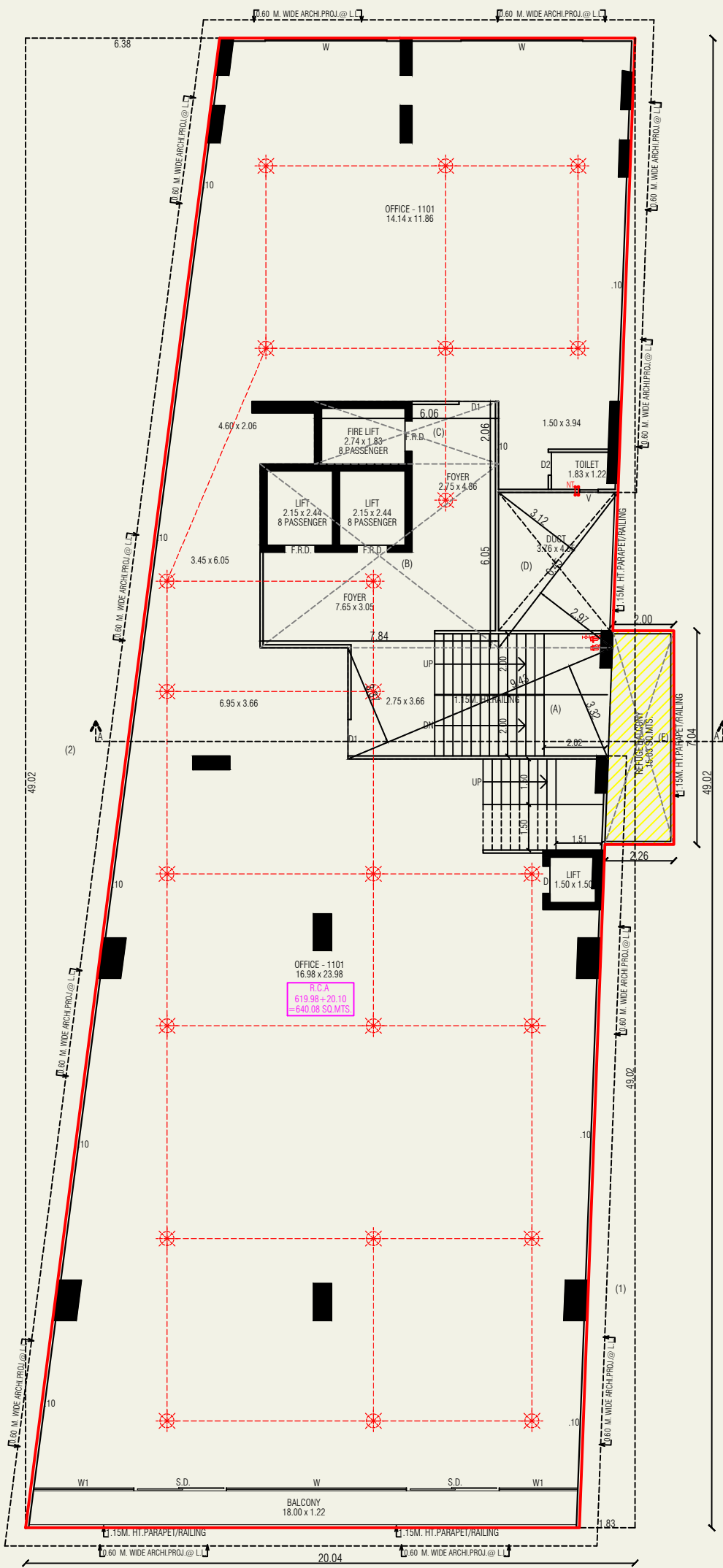
6TH & 8TH & 9TH FLOOR PLAN



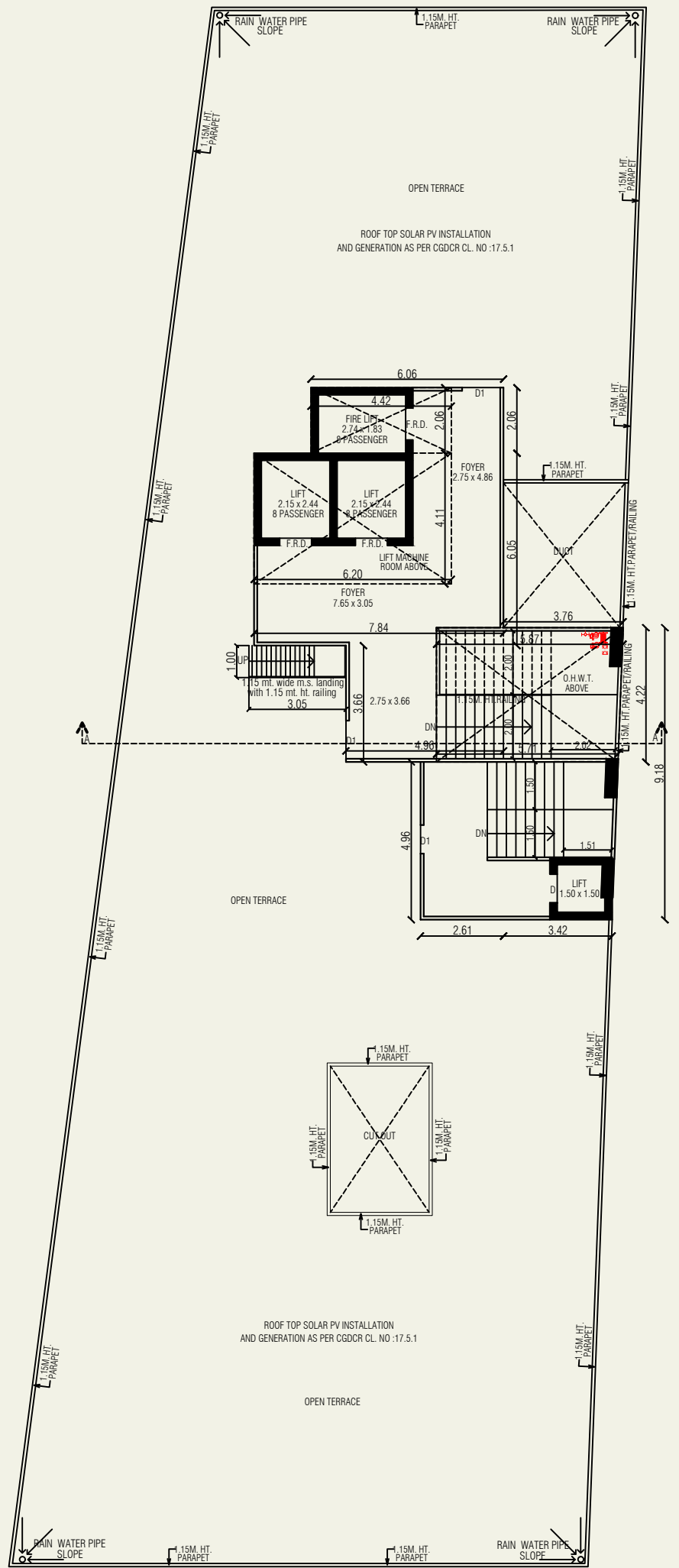
10TH FLOOR PLAN



12TH FLOOR PLAN

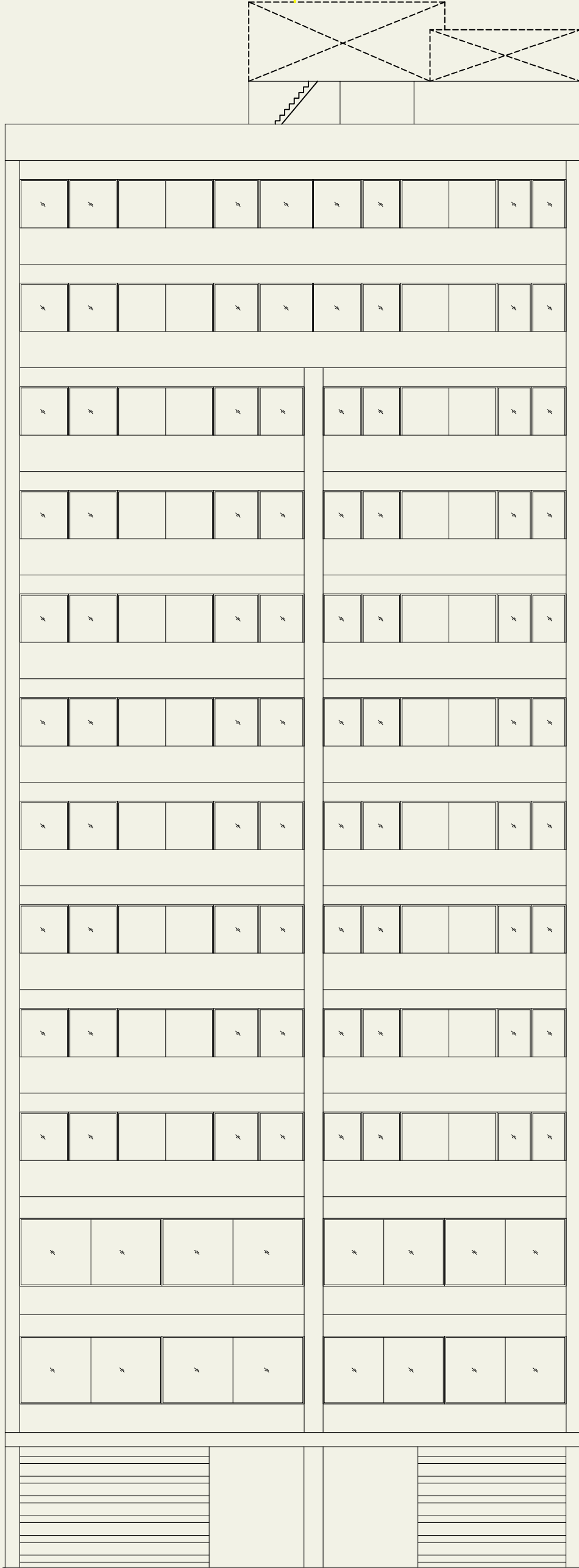


11TH FLOOR PLAN WITH ( REFUGE AREA )



OPEN TERRACE PLAN (O.H.W.T. & LIFT MACHINE RM PLAN)

ELECTRICAL CONDUCTOR/  
LIGHTING ARRESTER



GR. LVL.

ELEVATION

GR. LVL.

# SPECIFICATIONS

## Structure :-

RCC Frame Structure

## Doors & Windows :-

Wooden Frame with Flushed doors with Aluminium Fittings  
Sliding Windows with Aluminium Powder Coating with 8mm Glass

## Flooring :-

2\*2 Feet Full body Vitrified Tiles

## Electrical Work :-

As per Architect Design

## Railing :-

S.S. Railing with Glass Fitting

## Inside Wall :-

Single Coat Mala Plaster With putty Finished

## Outside Wall :-

Double Coat Sand Face Plaster with Exterior Paint or Structure

## Flooring :-

Full body Vitrified tiles

## Bathrooms :-

Tiles dado up to Lintel Level

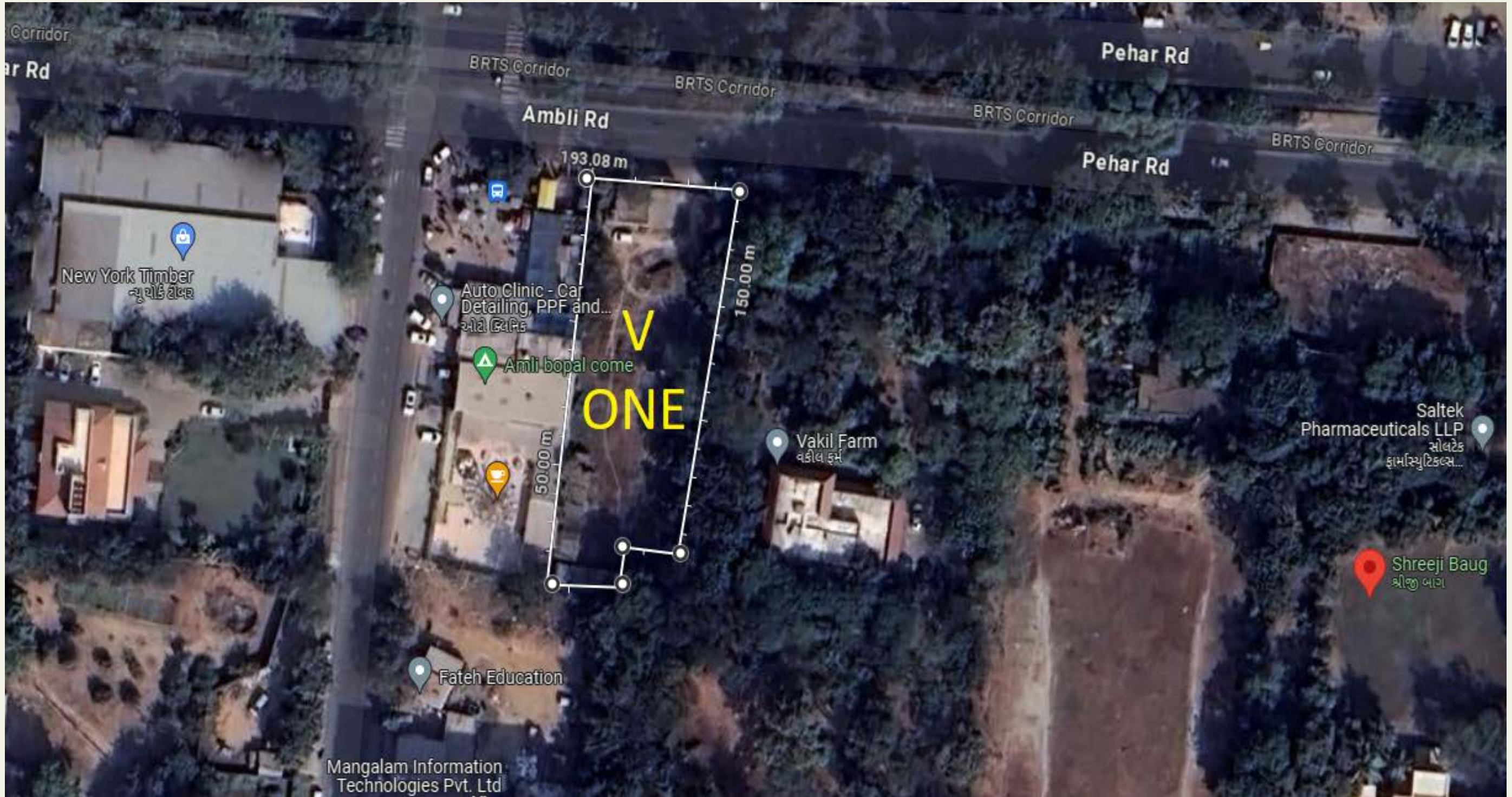
## Plumbing :-

As per Architect Details

## Terrace :-

Water Proofing  
China Mosaic to reduce Heat

# LOCATION



**Structure Engineer**  
Jigarkumar Shah

**Architect**  
Caleb Ferro

**Engineer**  
Vinay Trivedi