



**DEVELOPER**

**Dushyantsinh  
Solanki**

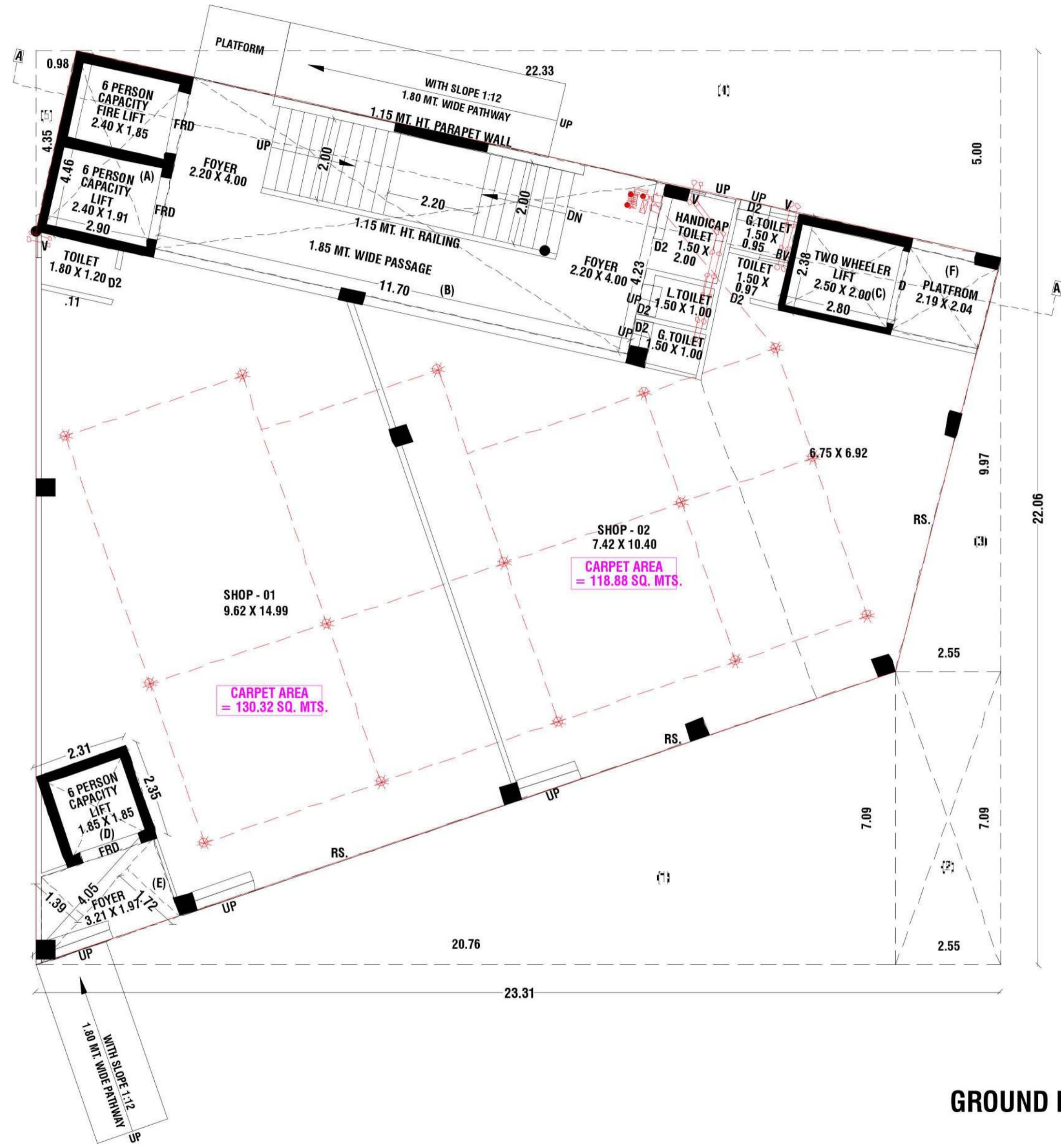
Site Address: Ud15, Shree Shakti Infra.,  
Prop. Dushyantsinh Solanki 228/4 ,  
Beside Topaz Restaurant, front Of Medico House,  
Visat- Koba Road, Visat , Ahmedabad 380005  
Contact No.: **9327426044 / 9925166887**



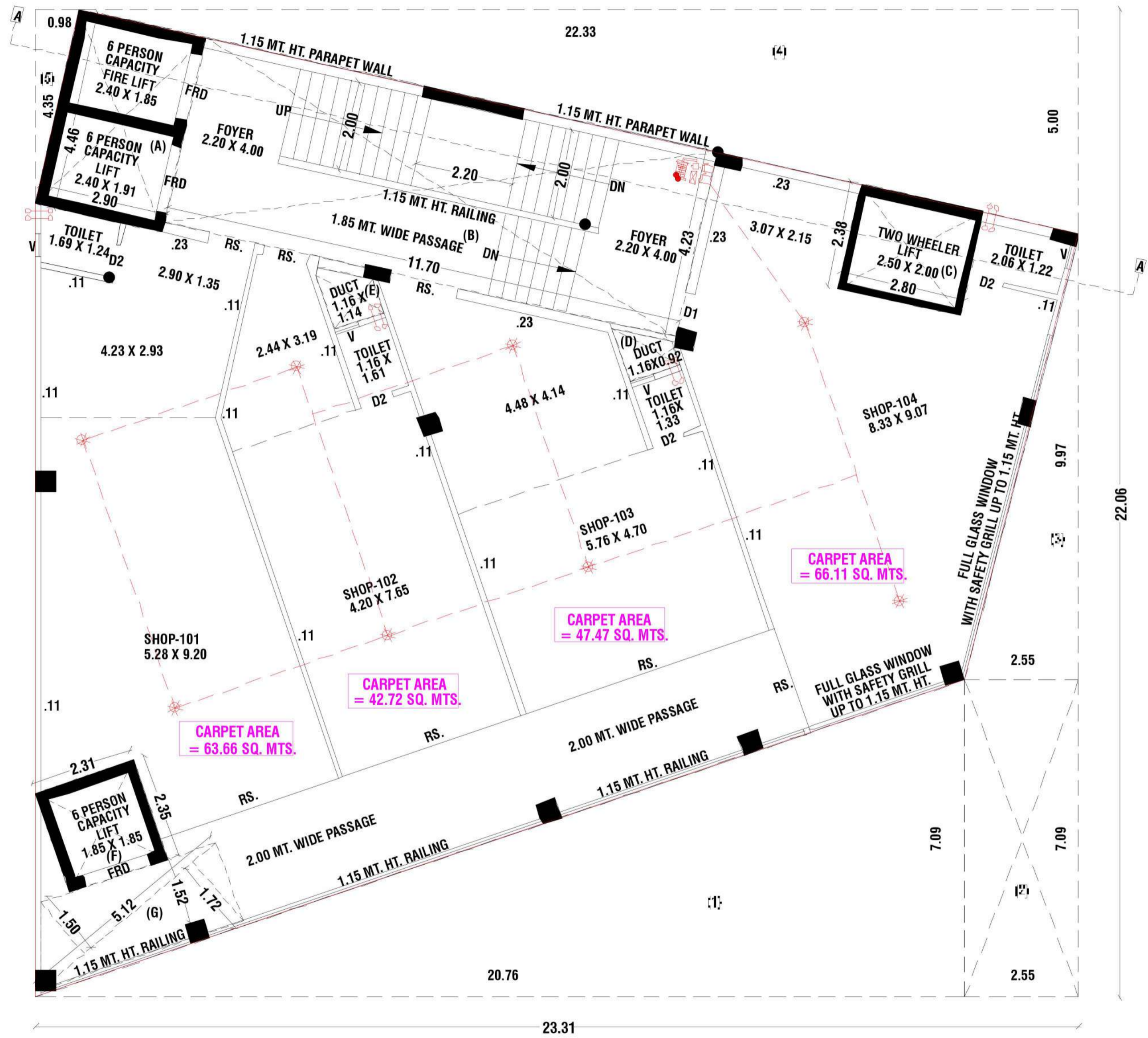
**PARKING LAYOUT PLAN**  
**SCALE :- 1CM = 1.00 MTS.**



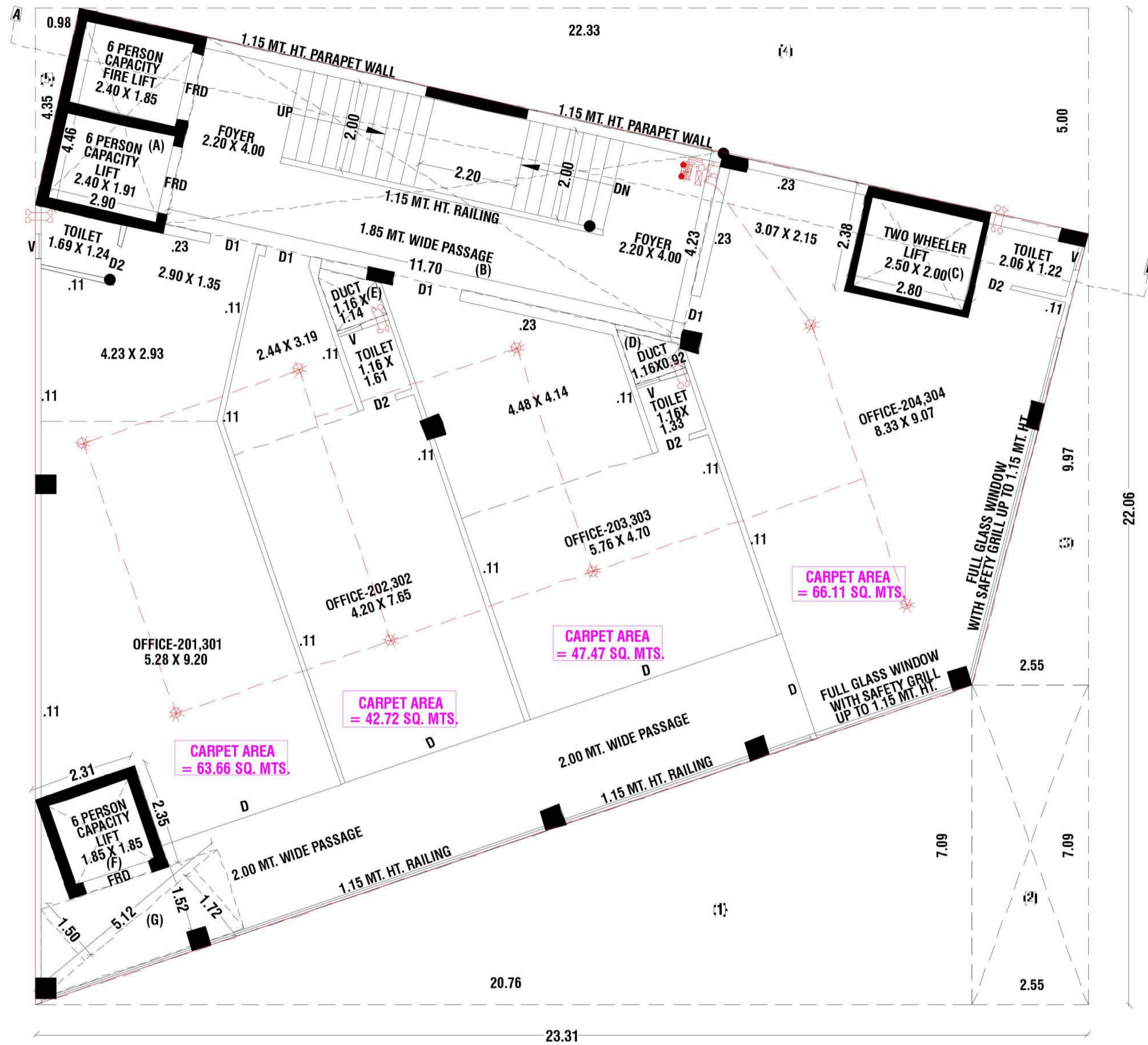




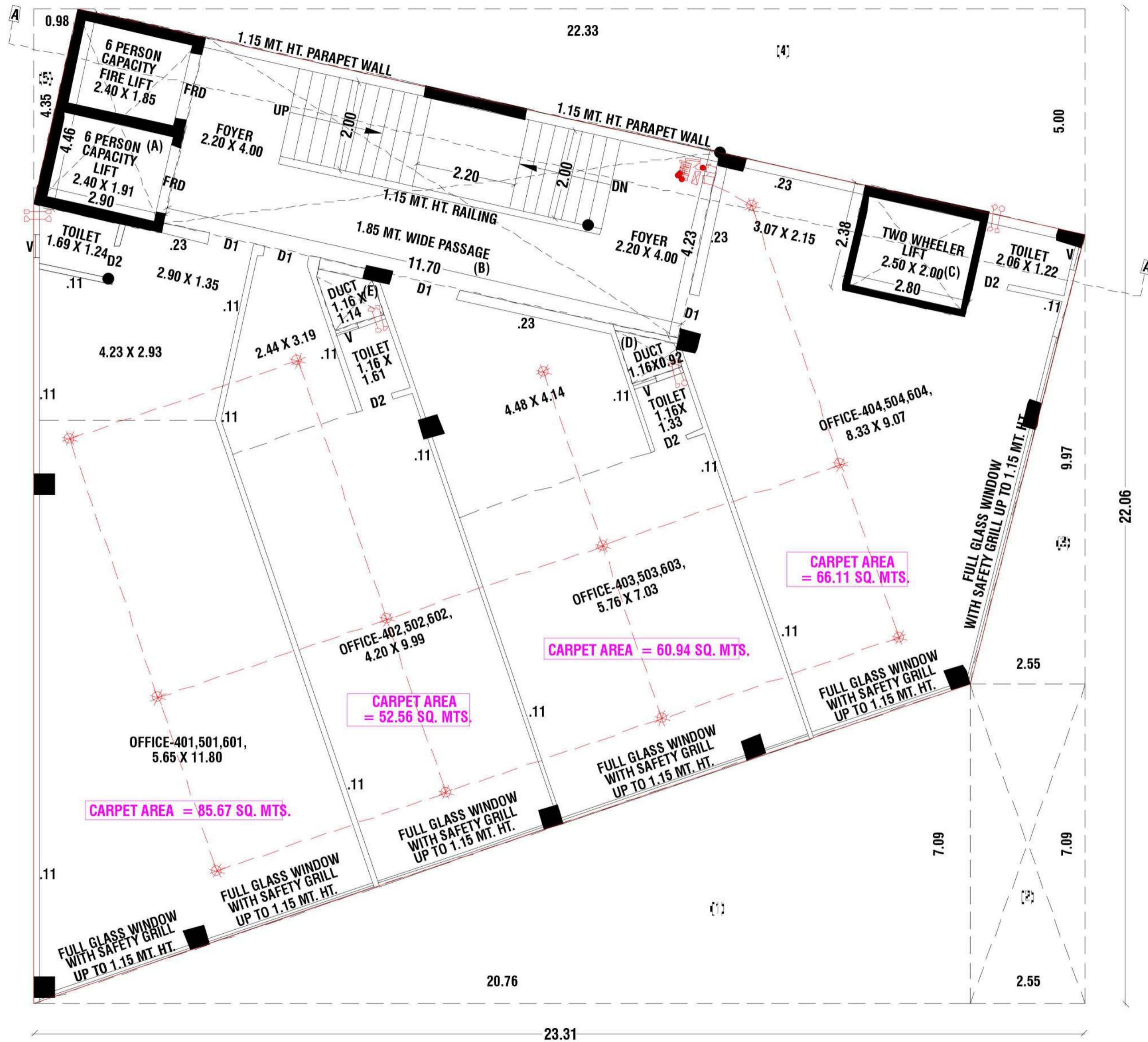
**GROUND FLOOR PLAN**



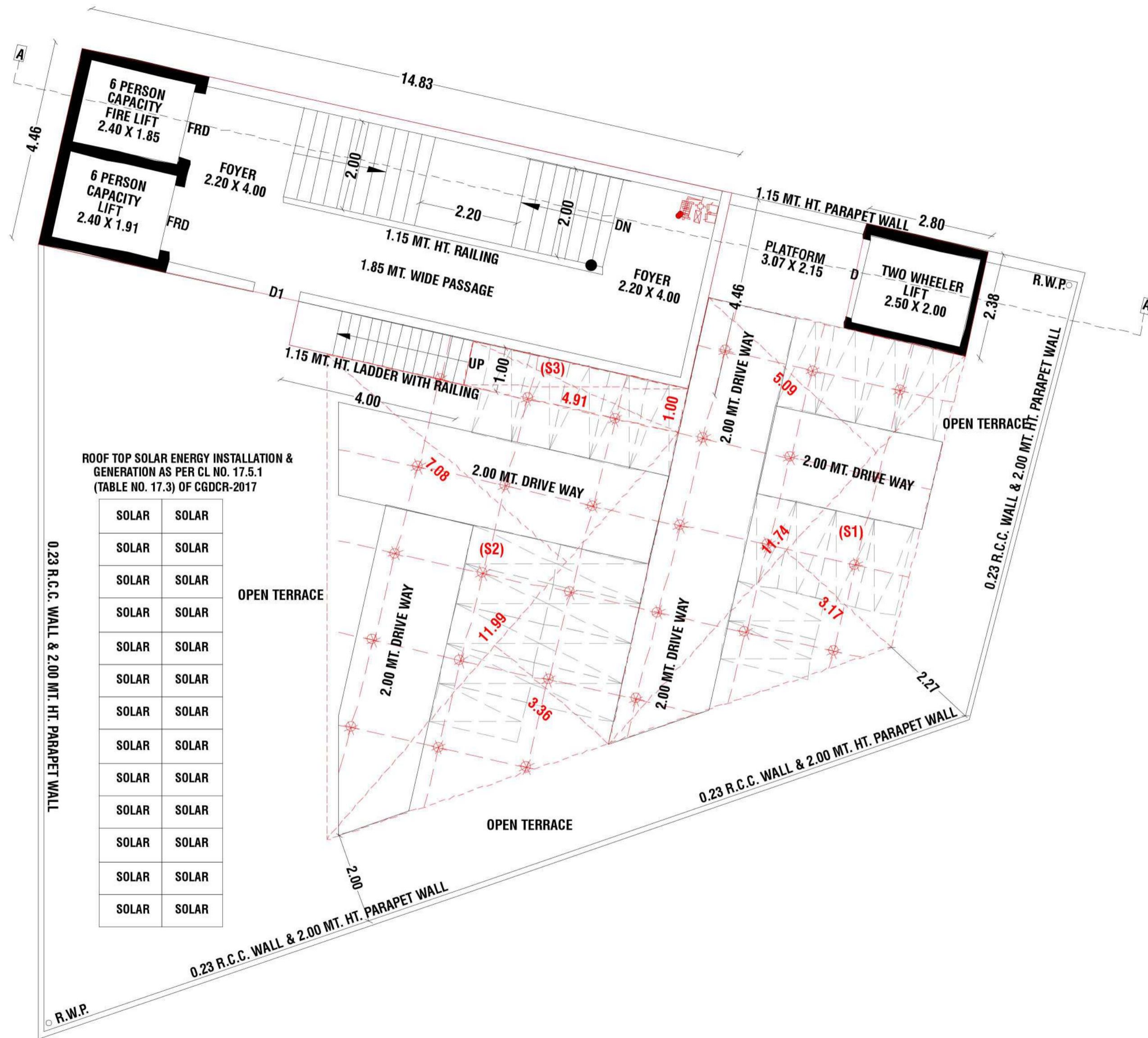
1ST FLOOR PLAN



2ND & 3RD FLOOR PLAN



TYPICAL FLOOR PLAN ( 4TH TO 6TH FLOOR )

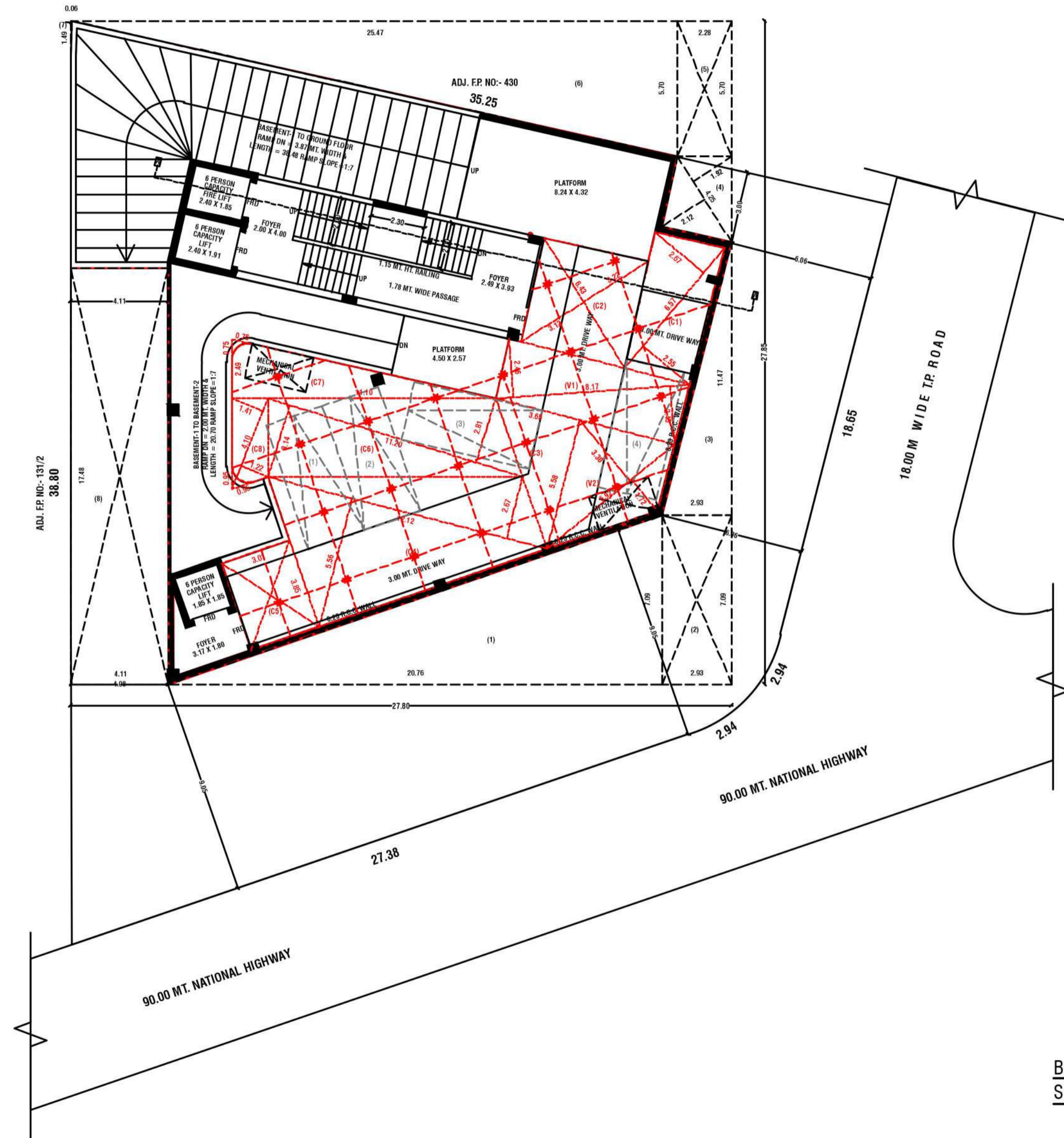


ROOF TOP SOLAR ENERGY INSTALLATION & GENERATION AS PER CL NO. 17.5.1 (TABLE NO. 17.3) OF CGDCR-2017

SOLAR	SOLAR
SOLAR	SOLAR
SOLAR	SOLAR
SOLAR	SOLAR
SOLAR	SOLAR
SOLAR	SOLAR
SOLAR	SOLAR
SOLAR	SOLAR
SOLAR	SOLAR
SOLAR	SOLAR
SOLAR	SOLAR
SOLAR	SOLAR
SOLAR	SOLAR
SOLAR	SOLAR
SOLAR	SOLAR

**OPEN TERRACE WITH STAIR CABIN PLAN**





**BASEMENT - 1**  
 SCALE :- 1CM = 1.00 MTS.





ADJ. F.P. NO:- 430  
35.25

ADJ. F.P. NO:- 131/2  
36.80

90.00 MT. NATIONAL HIGHWAY

90.00 MT. NATIONAL HIGHWAY

18.00 M WIDE T.P. ROAD

**BASEMENT - 2**  
**SCALE :- 1CM = 1.00 MTS.**





# UDi5

METRO MARK VENTURES

## SPECIFICATIONS

### ■ STRUCTURE

Earthquake resistant RCC frame structure as per is code.

### ■ ELECTRICAL

Single phase concealed ISI branded wiring and modular switches with adequate points.

### ■ PLASTER & PAINTS

Internal mala plaster with white putty finish and external elegant double coat plaster with acrylic paint or any other finish recommended by architect.

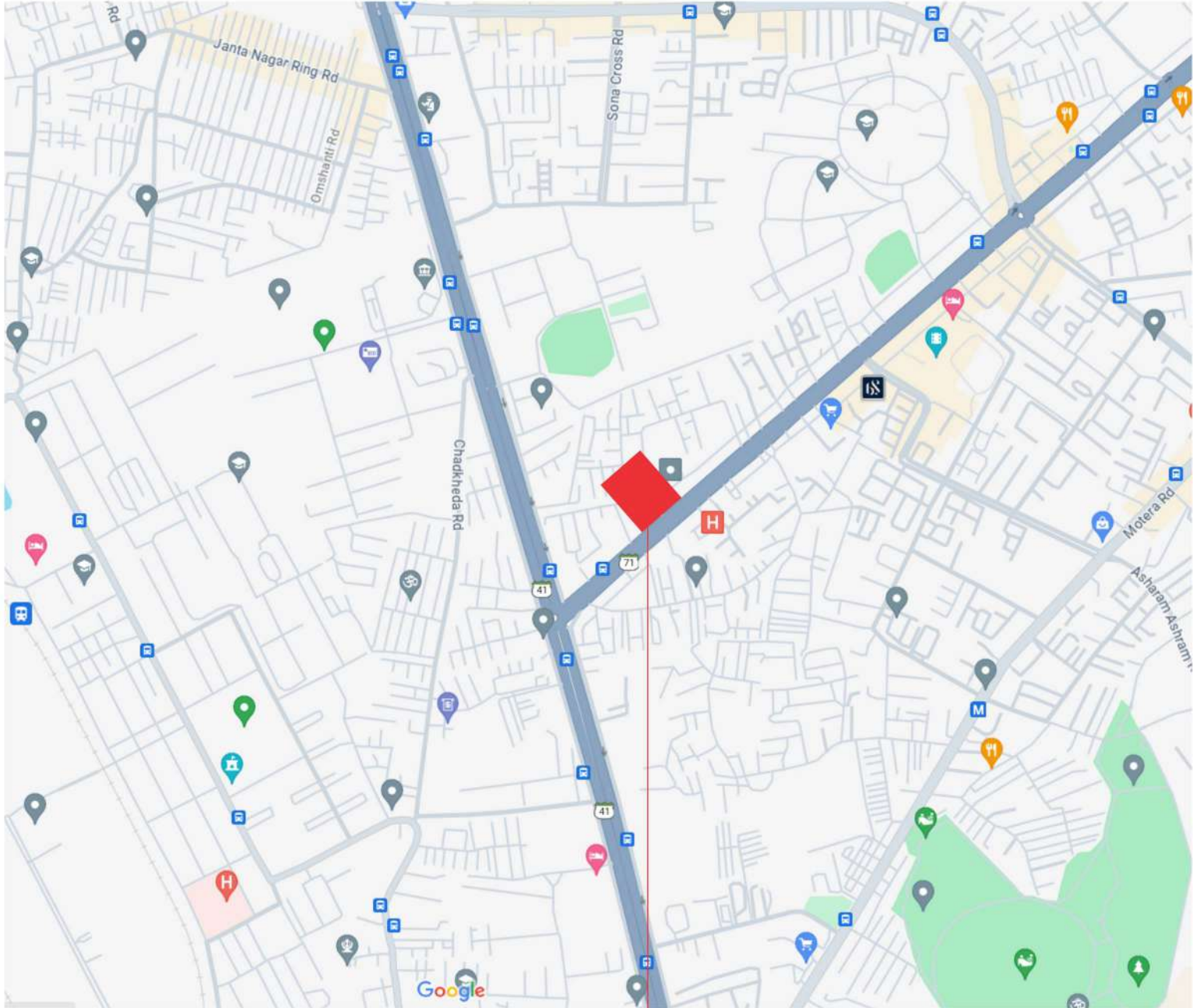
### ■ WINDOWS

Fully glazed aluminum section windows. Good quality Vitrified tiles in all common areas.

### ■ DOORS

Rolling shutters in shops and flush doors with wooden frame in offices.

## Location Map



Site Address: Ud15, Shree Shakti Infra.,  
Prop. Dushyantsinh Solanki 228/4,  
Beside Topaz Restaurant, front Of Medico House,  
Visat- Koba Road, Visat , Ahmedabad 380005  
Contact No.: **9327426044 / 9925166887**

**UDi15**  
METRO MARK VENTURES

COMPANY



DEVELOPER

Dushyantsinh  
Solanki

ARCHITECT

RERA REG. NO. :

Website : [www.gujrera.gujarat.gov.in](http://www.gujrera.gujarat.gov.in)